

May 13, 2025

# Palm Beach County Department of Airports

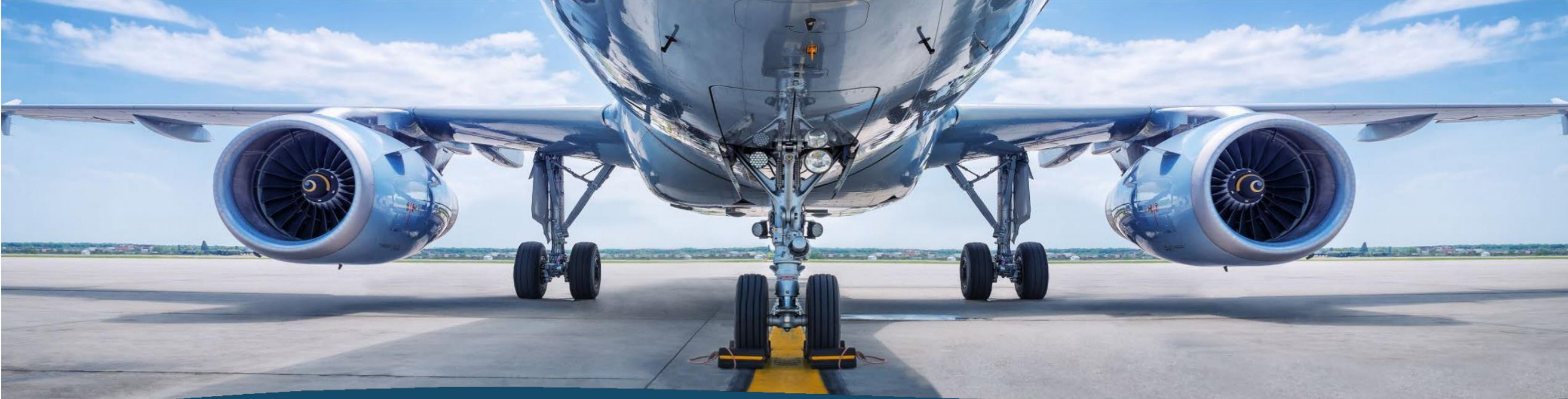
Council Meeting

Town of Palm Beach

PRESENTED BY:

**Laura Beebe**  
**Director of Airports**  
**Palm Beach County Department of Airports**





# Overview of the Airport System



# Palm Beach County's Airport System

## Palm Beach International Airport

Commercial Service and General Aviation

PBI

## North Palm Beach County General Aviation Airport

Reliever, General Aviation

F45



## Palm Beach County Park Airport (Lantana)

Reliever, General Aviation

LNA

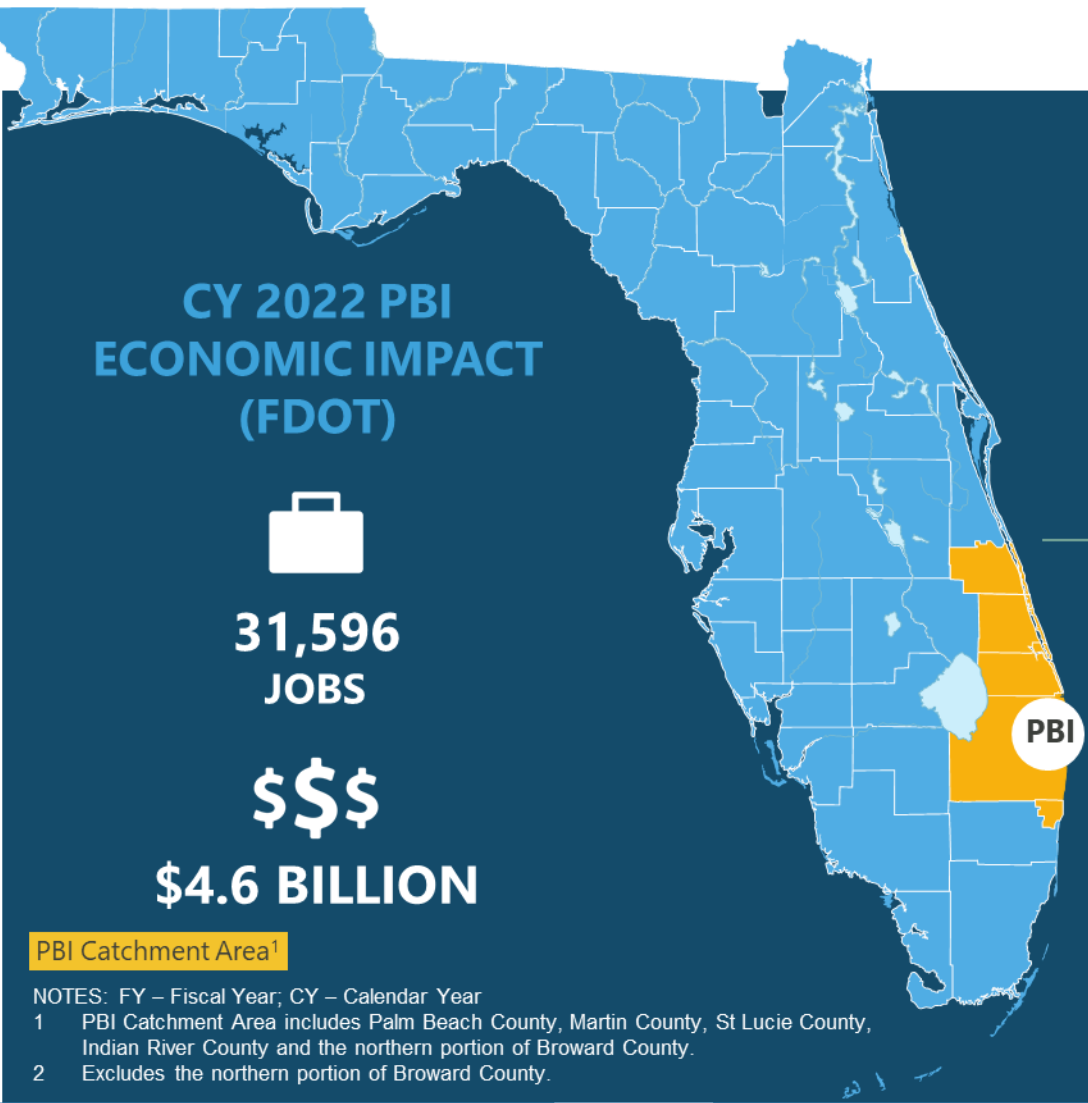
## Palm Beach County Glades Airport (Pahokee)

General Aviation

PHK



# Palm Beach County Airport System By the Numbers




## KEY ACTIVITY METRICS

  
**PASSENGERS**  
**8.5 M**  
As of March 2025

  
**14**  
**PASSENGER SERVICE AIRLINES**  
As of April 2025

  
**NONSTOP SERVICE TO 40 DESTINATIONS**  
As of April 2025

## SOCIOECONOMIC CHARACTERISTICS<sup>2</sup> (PBI CATCHMENT AREA)

  
**TOTAL POPULATION**  
**2.2M → 2.4M**  
FY 2023      FY 2030

  
**TOTAL EARNINGS**  
**\$74.3B → \$90.6B**  
FY 2023      FY 2030

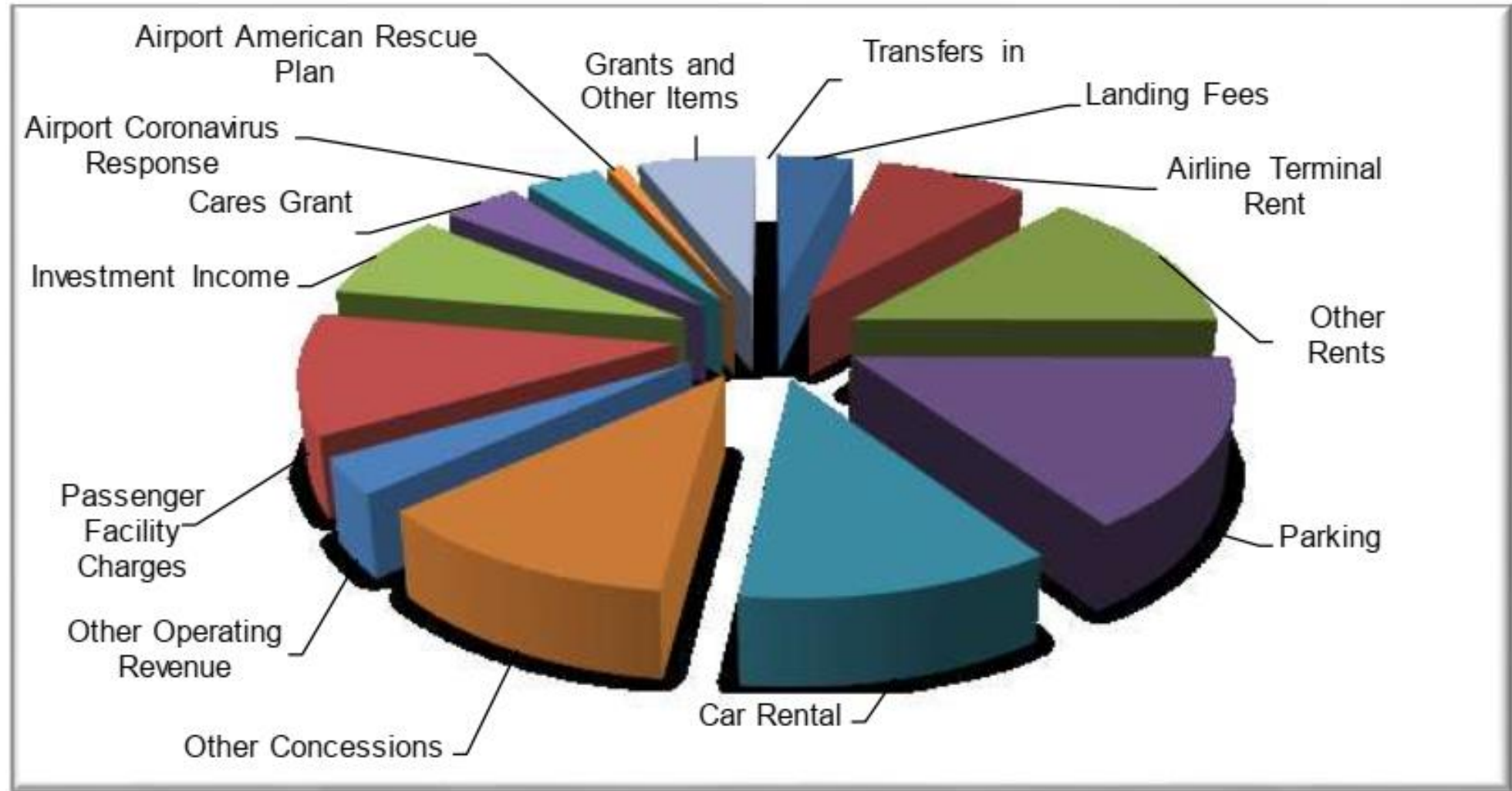
  
**TOTAL PER CAPITA PERSONAL INCOME**  
**\$81,330 → \$90,595**  
FY 2023      FY 2030

CY 2022 GA Airports Economic Impact	F45	 <b>467 Jobs</b> <b>\$\$\$ \$77.3 Million</b>	LNA	 <b>772 Jobs</b> <b>\$\$\$ \$144 Million</b>	PHK	 <b>33 Jobs</b> <b>\$\$\$ \$5.7 Million</b>
-------------------------------------	-----	---	-----	--	-----	---

# Airport System Governance & Funding

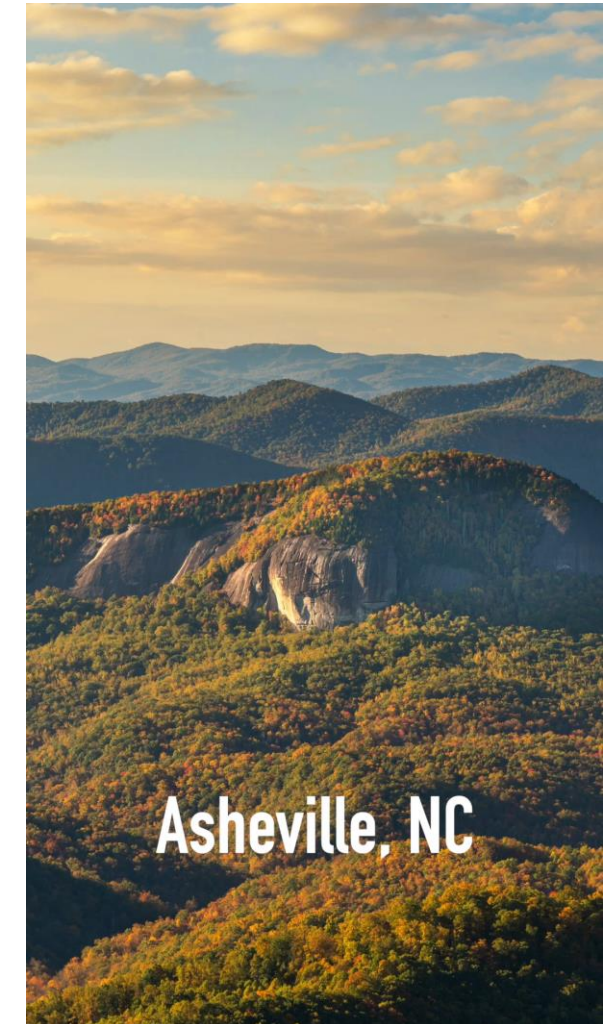
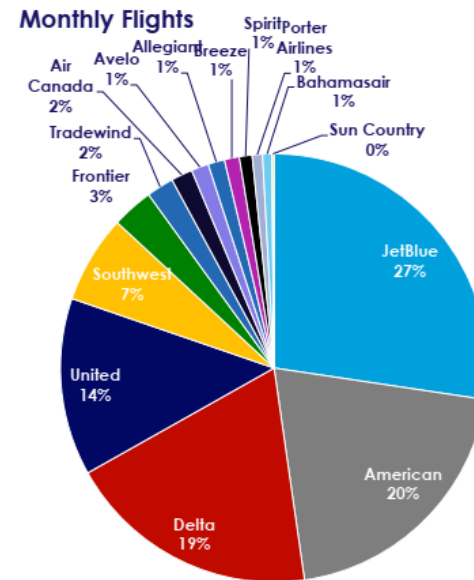
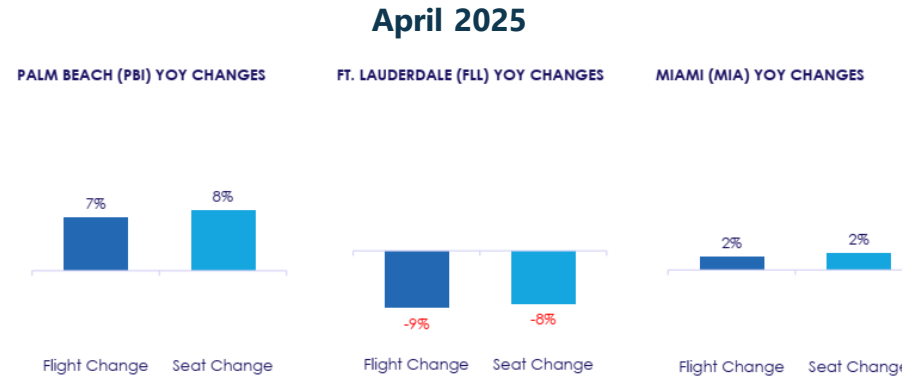
- The County's Airports System is operated and managed by the Palm Beach County Department of Airports
- Policy is established by the Board of County Commissioners
- Operates as an enterprise fund, **no ad valorem tax support**
  - Operations and maintenance are funded by user fees to airlines, businesses and passengers
  - Construction is funded by Federal and State grants, Passenger Facility Charges (PFC), revenue bonds and airport revenues
  - Airport revenues may only be used for the operation, maintenance and improvement of the County's Airport System

# Airport Funding by Category



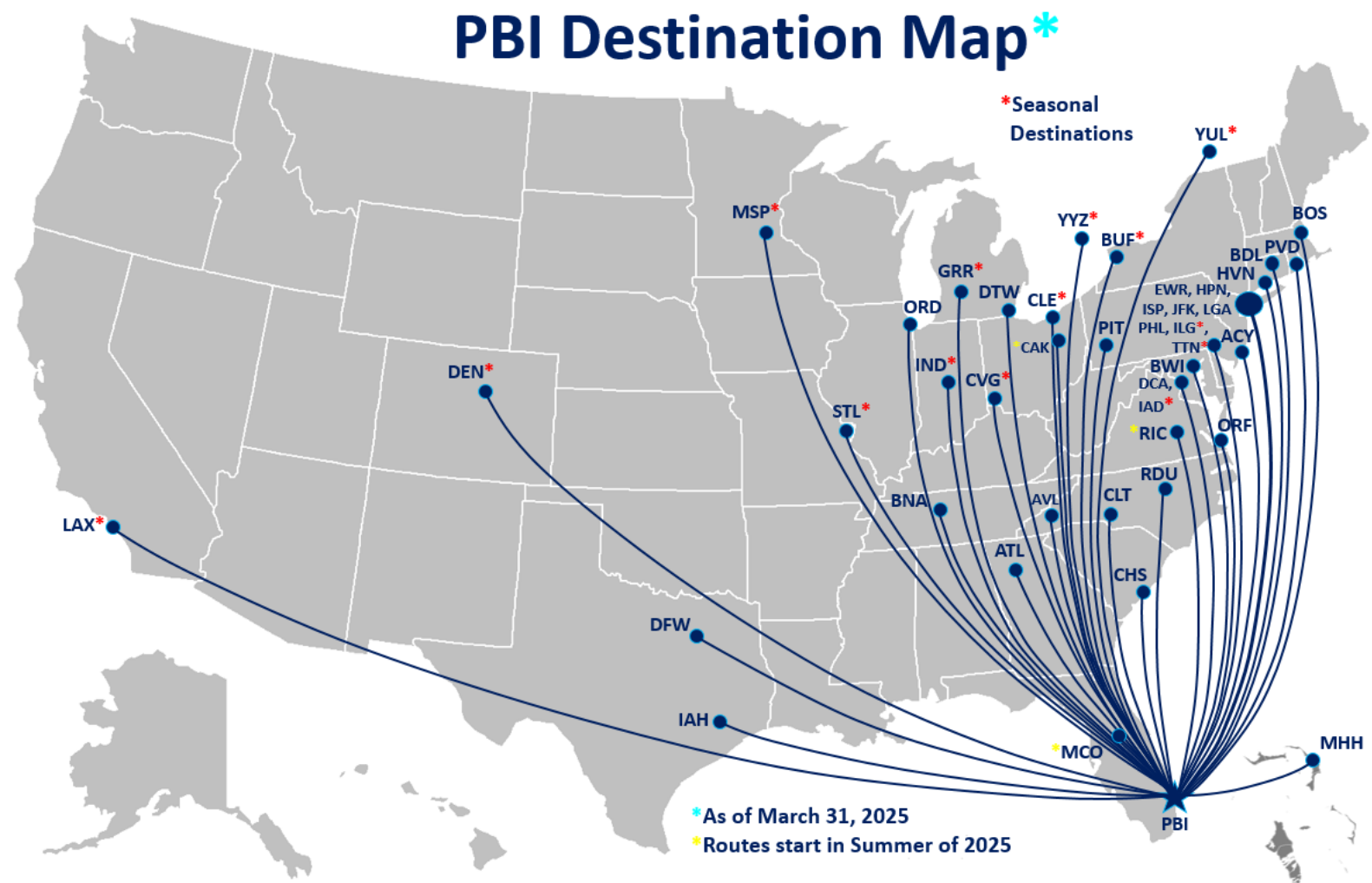
# Palm Beach International Airport

- Continued Growth YOY
- New Non-Stop Service
  - Nashville (Southwest)
  - Buffalo (JetBlue)
- Extended Summer Service
  - Houston (United)
  - Charleston/Raleigh Durham (Breeze)
- Nationally Recognized
  - 5<sup>th</sup> Best Airport in the US  
*Conde' Nast Traveler*
  - 7<sup>th</sup> Best Medium Airport  
*J.D. Power North America Airport Satisfaction Survey*
  - 3<sup>rd</sup> Best Domestic Airport  
*Travel & Leisure*



**Asheville, NC**

# PBI Destination Map







# Upcoming/Continuing Projects

Concourse Expansion

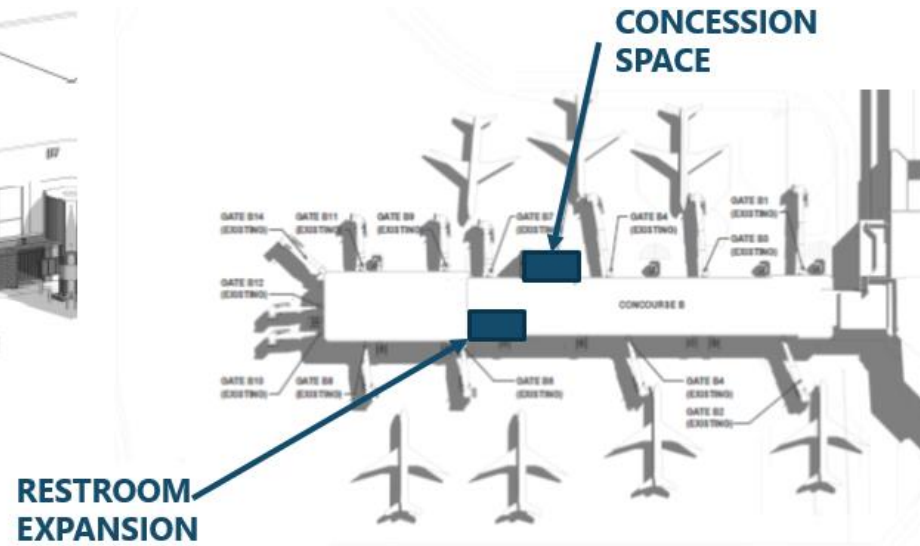
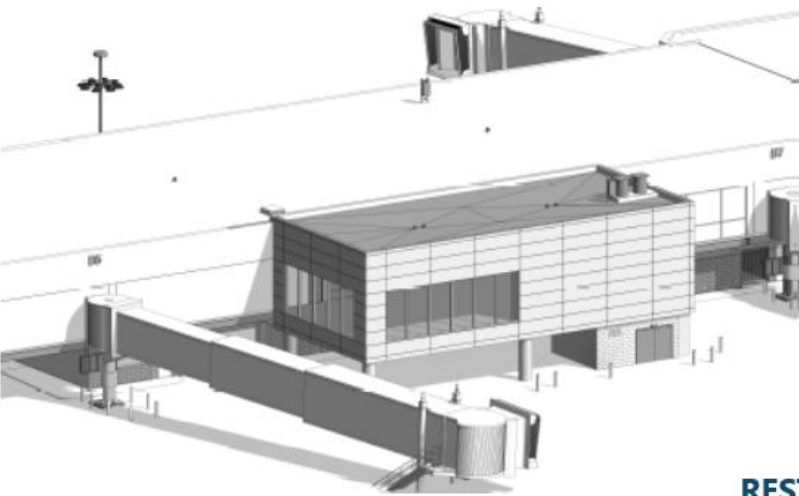
Updated Concessions Program

Consolidated Rental Car Facility Development

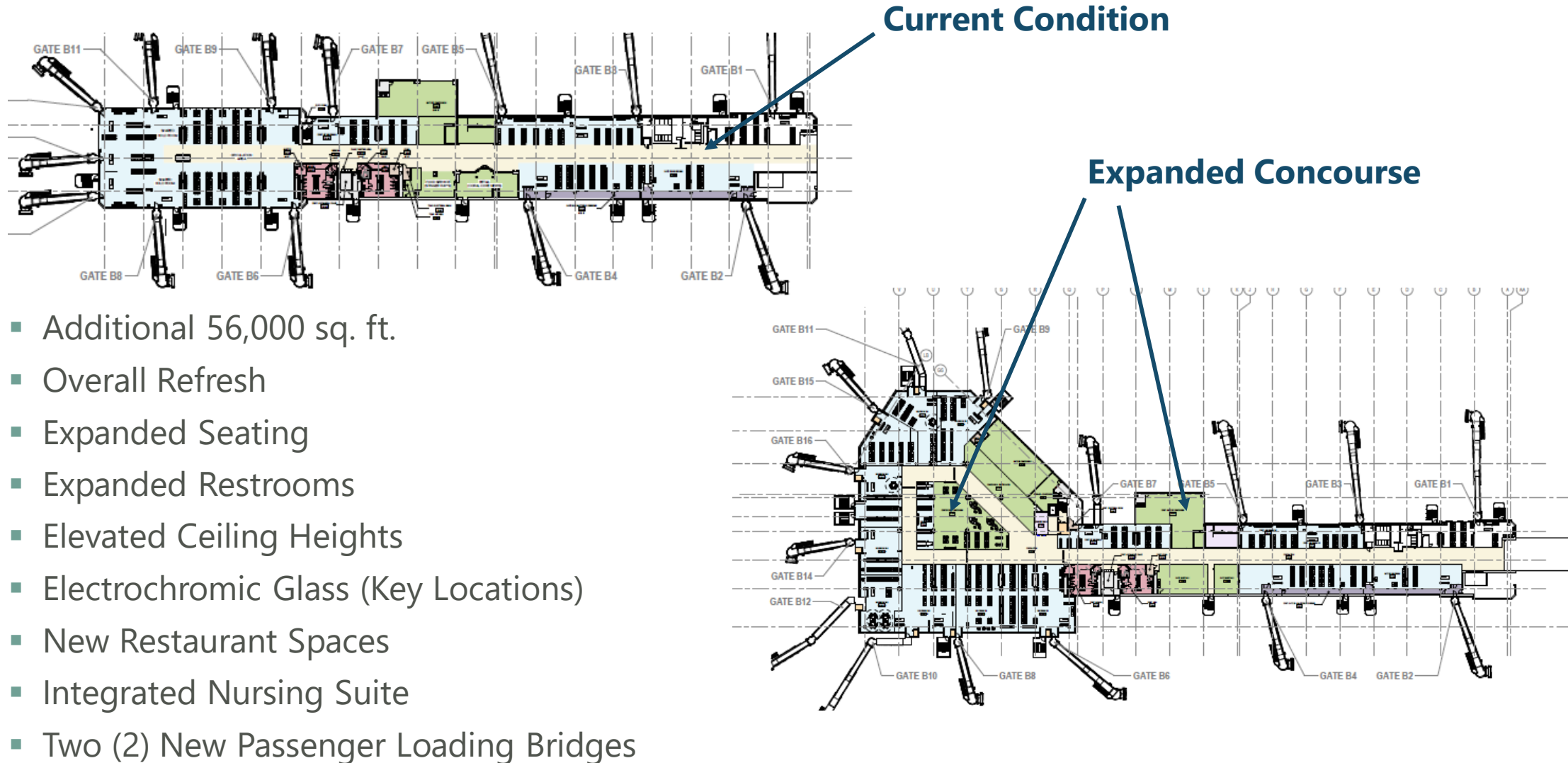
Long-term Planning for Airfield Improvements

# Concourse B Expansion

- **Phase I** - expansion of restroom facilities and construction of approximately 3,000 square feet of new shell space for a future sit down restaurant between Gates B5 and B7 (Spring 2025)
- **Phase II** – Interior renovations of existing concourse and water line relocation (Fall 2025)



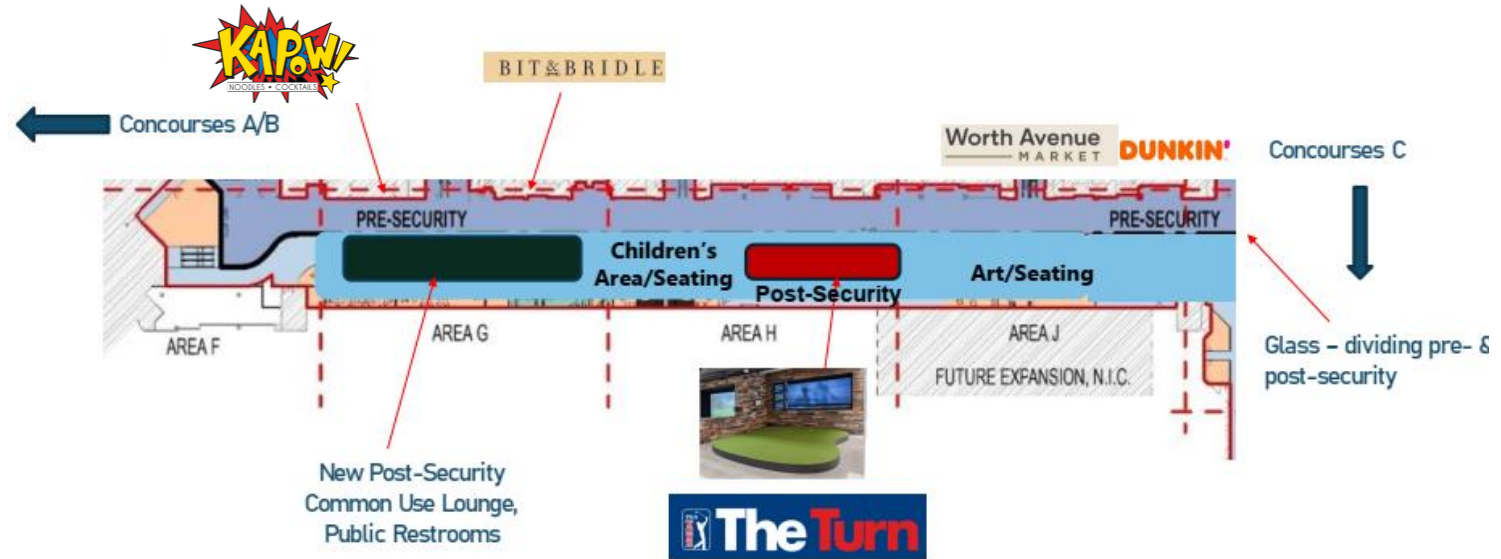
# Final Phase of Concourse B Expansion





# Main Terminal Modernization - Post-Security Connector

- Connecting Concourses A/B and C through new post-security space
- Replacing the existing skylight
- New terrazzo flooring
- Expanding security checkpoints
- New lounge space & restaurant/entertainment space
- Art Program/Children's Area





# New Restaurants & Shops





# New Restaurants & Shops



tropical CAFE  
SMOOTHIE



# PBI Consolidated Rent-A-Car Facility

## ■ Program Goals

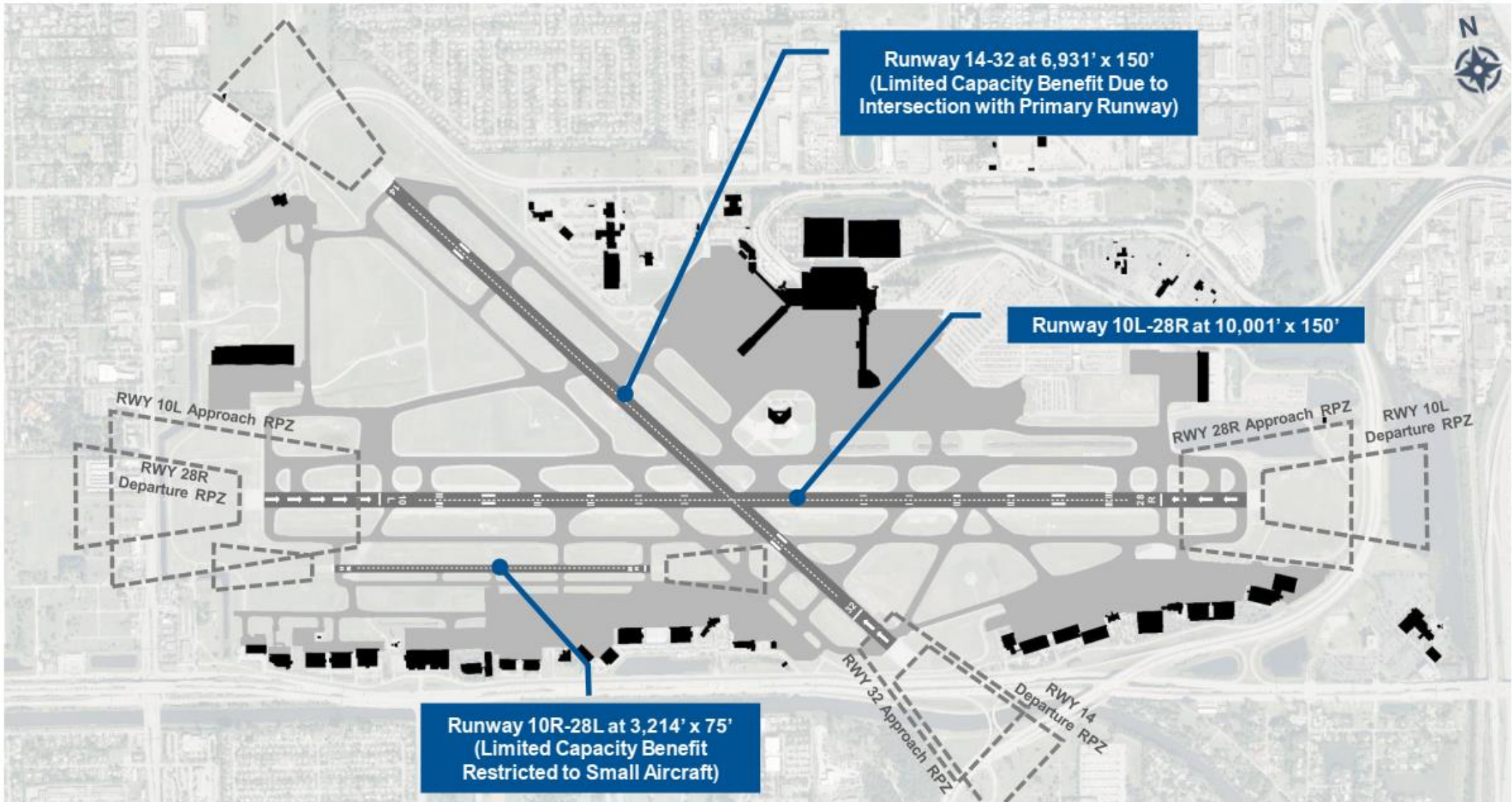
- Consolidating all rental car operations in a single location adjacent to the PBI Terminal Area
- Enabling existing sites to be redeveloped to alternative uses
- Consolidating bus operations (with eventual connection to main terminal)
- Reducing congestion at terminal curbs and emissions
- Improving the passenger experience

## ■ Next Steps

- Establishment of a Customer Facility Charge (CFC)
- Property Acquisition
- Issuance of CFC Bonds
- Design/Development

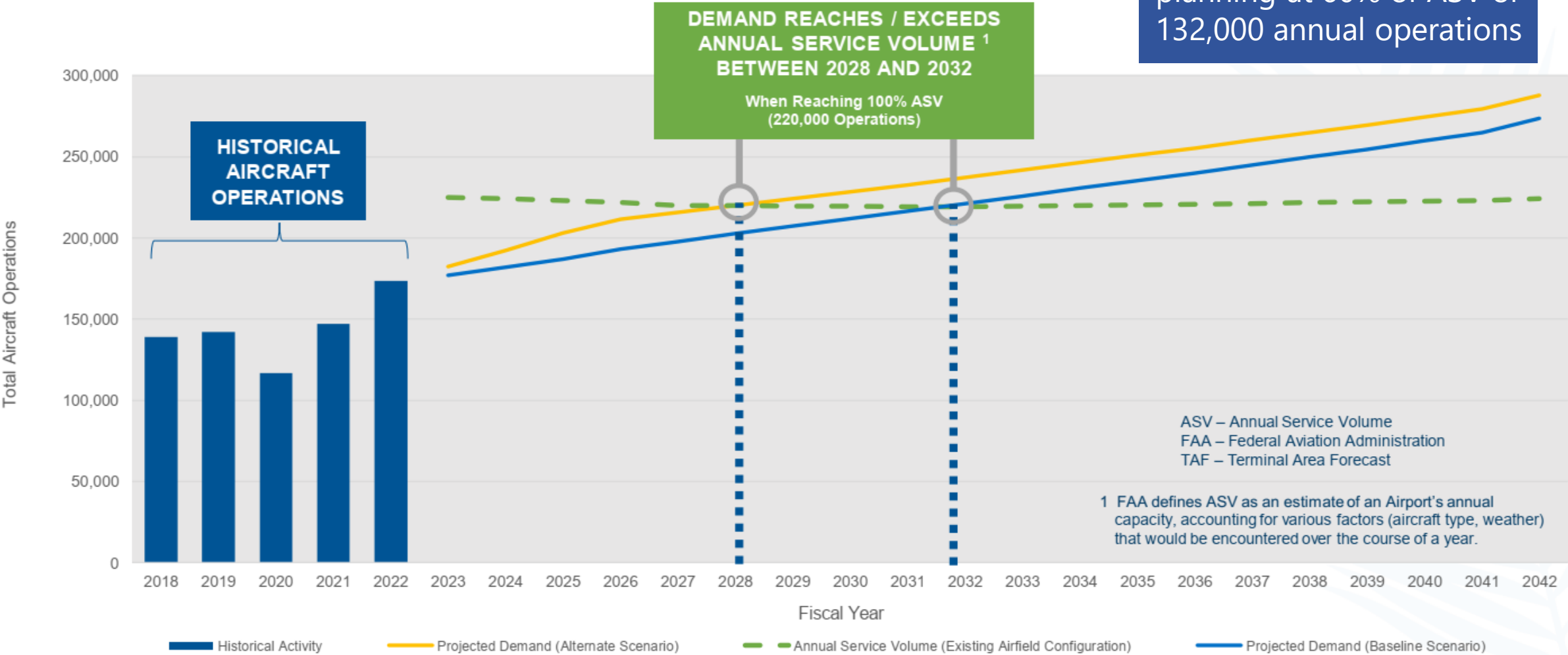


# PBI Existing Airfield Limitations and Constraints



# Current Demand Projections

FAA recommends starting planning at 60% of ASV or 132,000 annual operations





# Impact of No Action

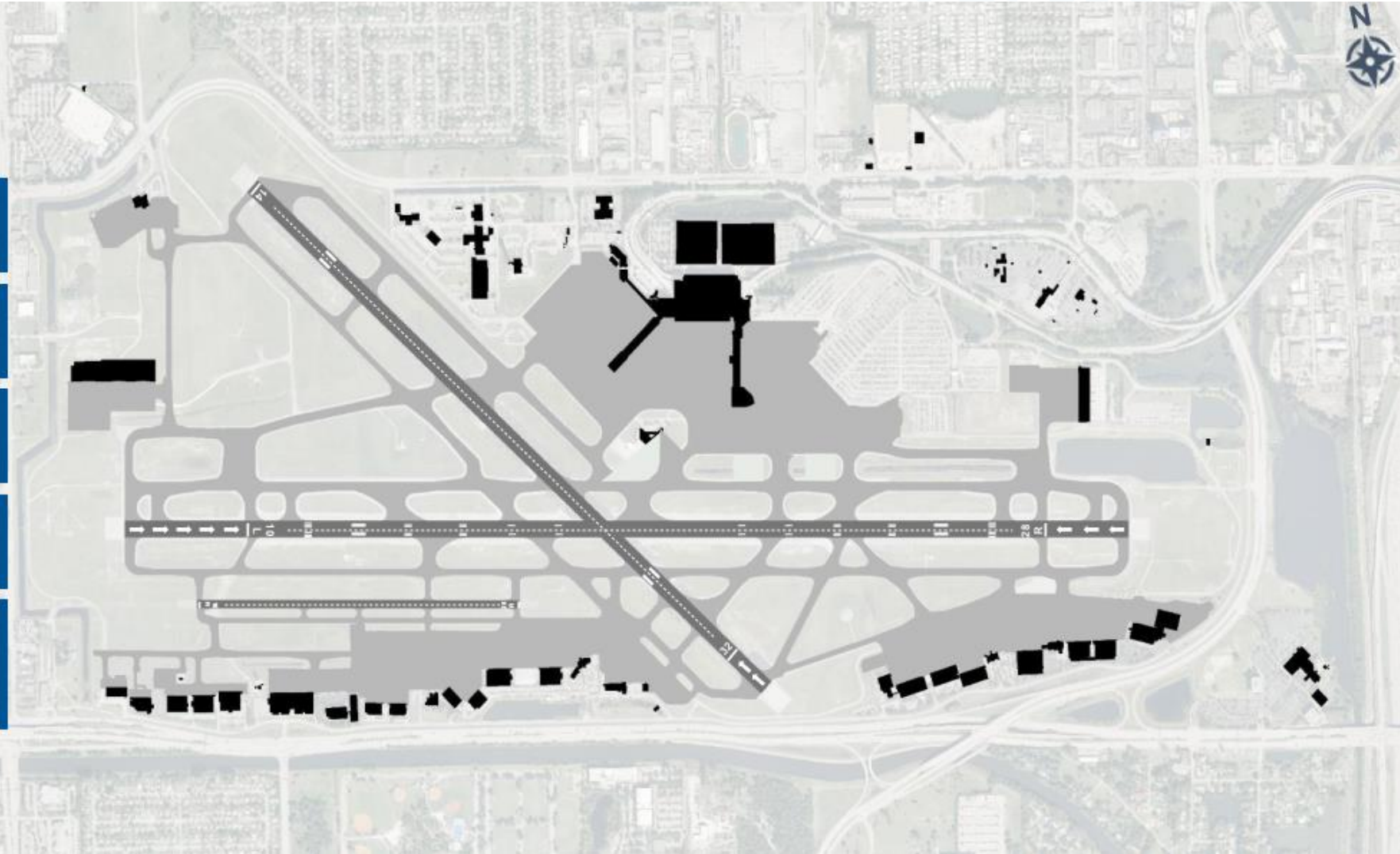
Increased delays

Reduced commercial air service

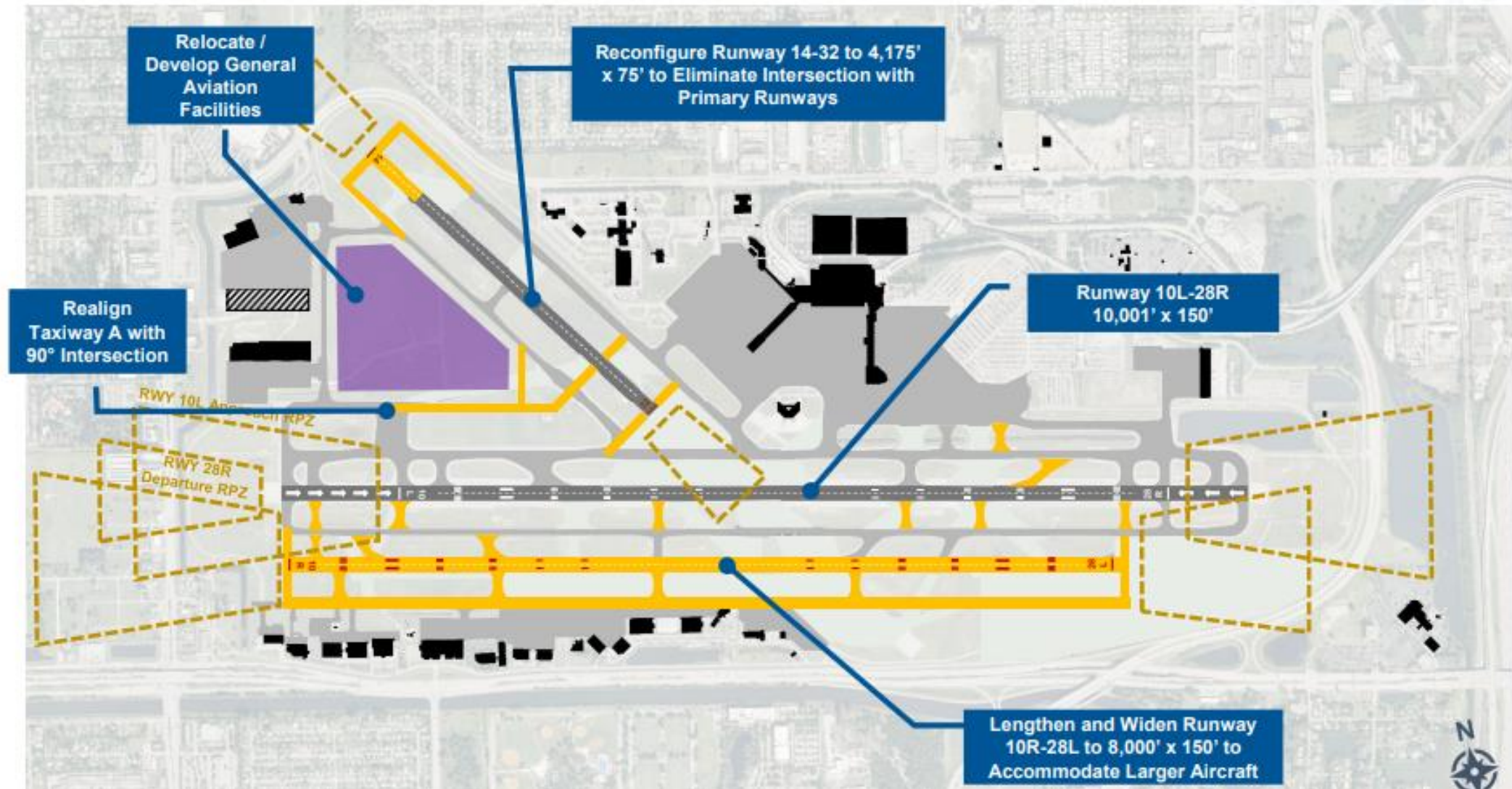
Economic impacts

Increased aircraft emissions

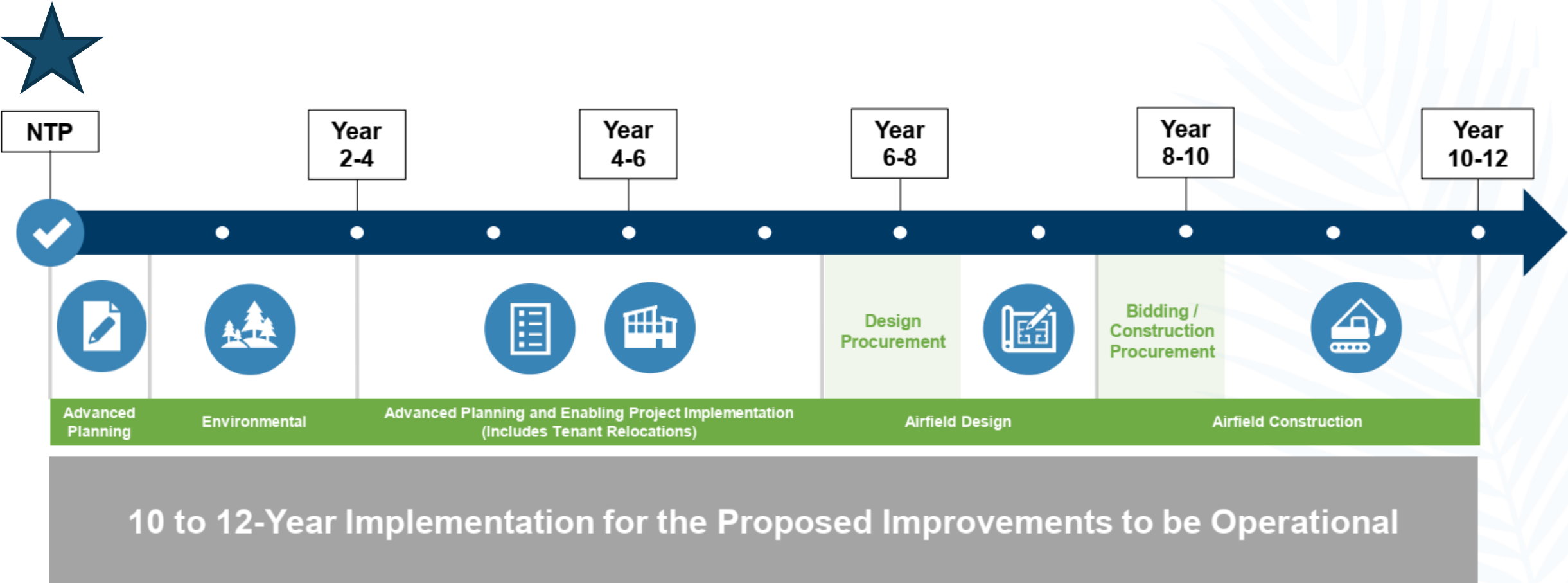
Increased frequency of  
alternative headings (fanning)



# Preliminary Airfield Improvement Project

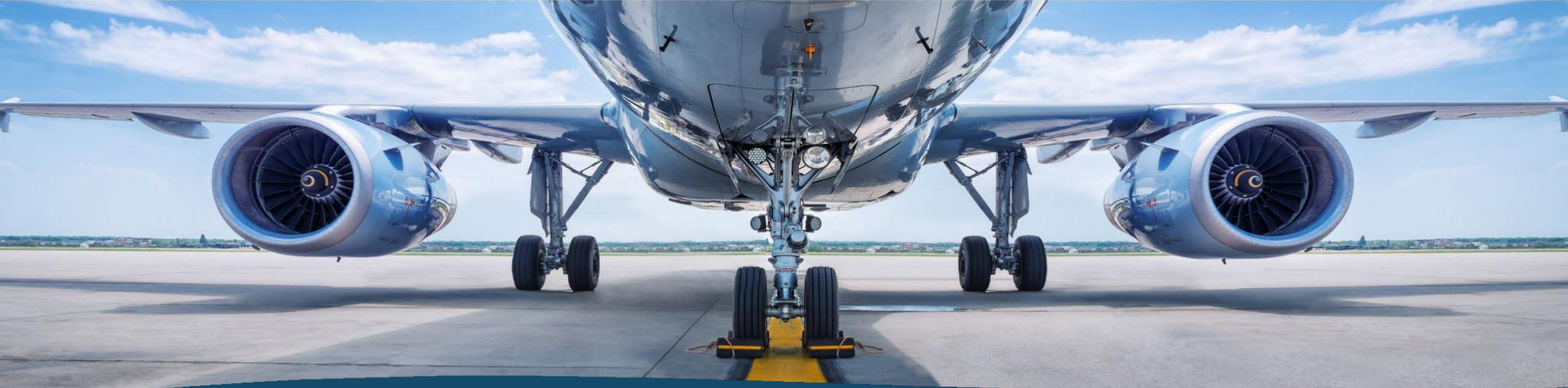


# Projected Timeline for Implementation



NTP – Notice to Proceed

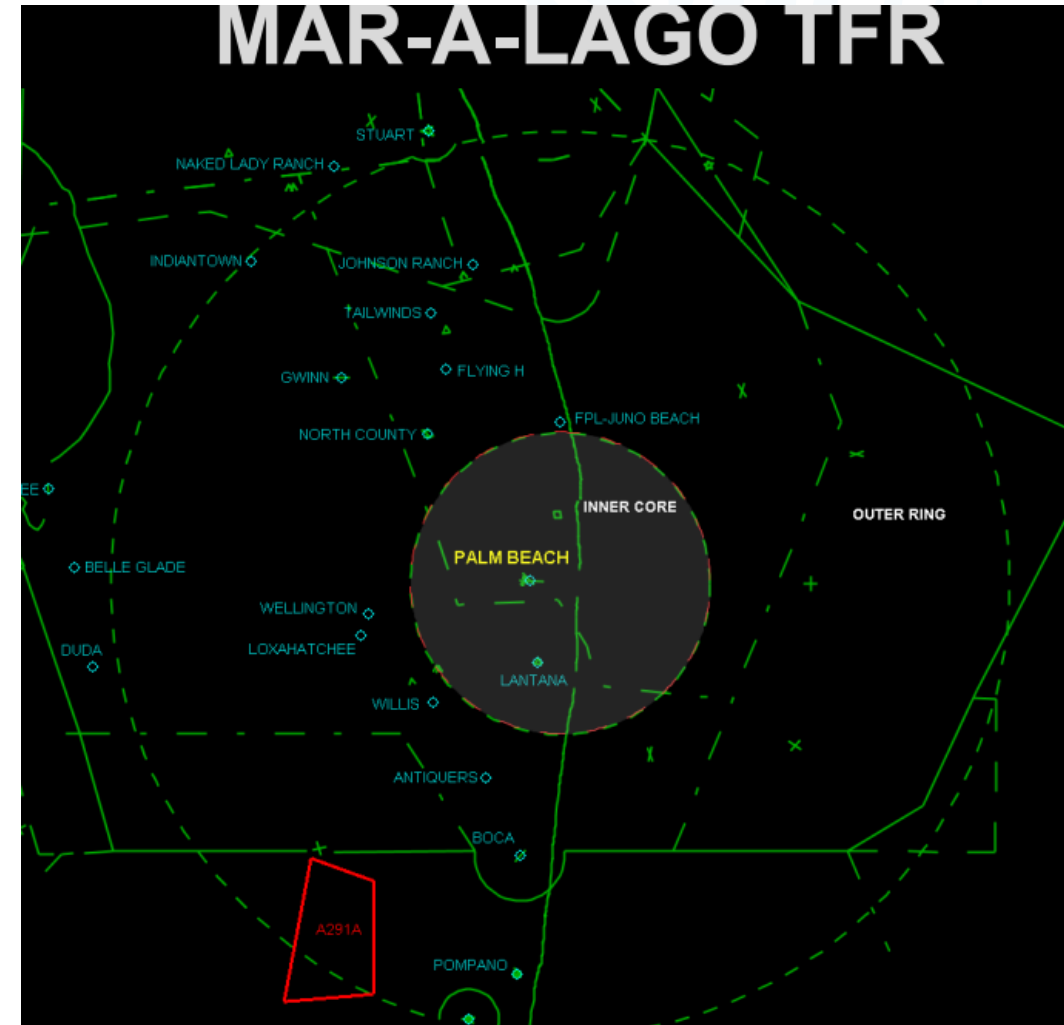




## Temporary Flight Restrictions

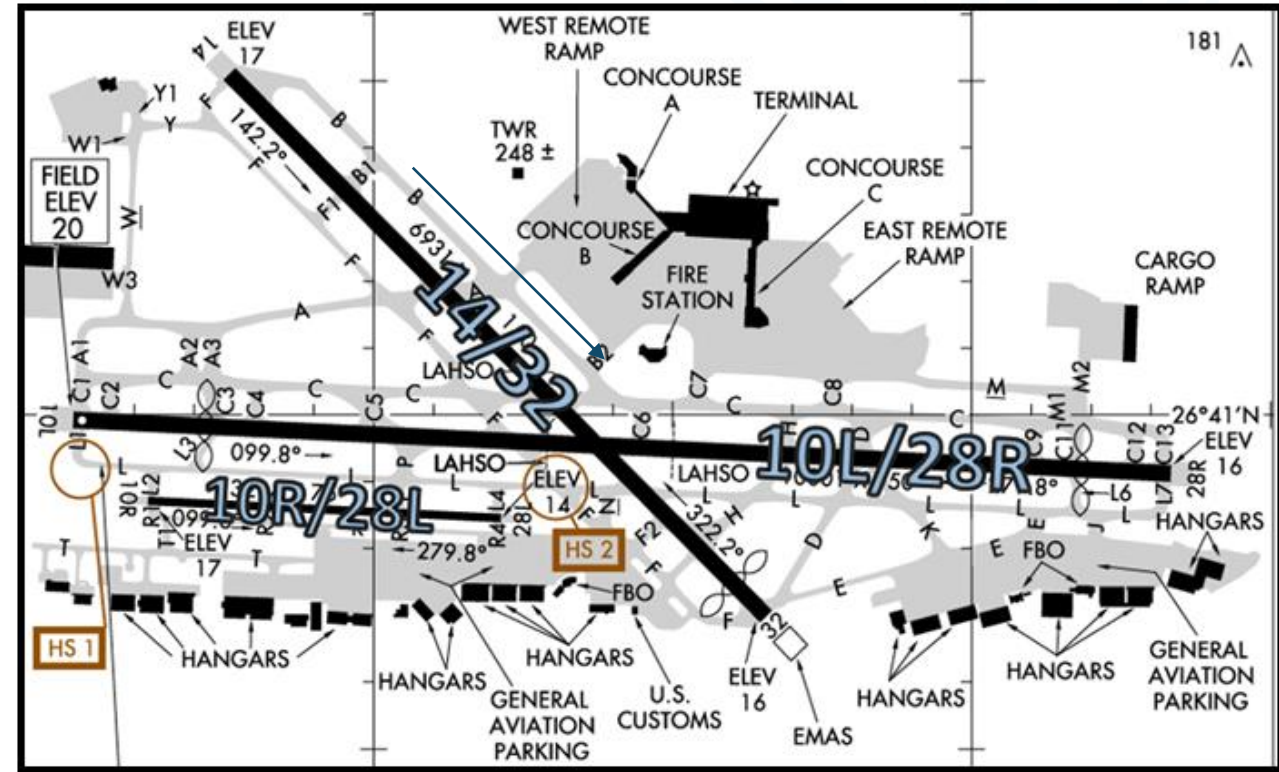
# Temporary Flight Restriction (TFR) Overview

- Implemented when President is in Palm Beach County
- Restrictions vary by location
  - 10 NM Inner Core
    - All aircraft operations are prohibited, except:
      - ➔ Certain military aircraft
      - ➔ Approved law enforcement, air ambulance & firefighting operations
      - ➔ Regularly scheduled commercial service/cargo
      - ➔ Gateway operations
  - 10 – 30 NM Outer Core
    - Aircraft can arrive/depart airfields in the outer core, subject to certain requirements
    - No loitering permitted – list of restrictions available on PBI website: <https://www.pbia.org/business/temporary-flight-restrictions/>



# What Happens at PBI during a TFR

- Temporary road closures
- Short pause in aircraft operations on arrival/departure
- No direct overflights over Mar-a-Lago
  - Increased use of Runway 14/32
  - Flight paths change for Runway 10L/28R
    - Requires deviation from traditional departure path to the east
    - Aircraft will depart to the north, or south, of Mar-a-Lago
- GA aircraft must depart through a gateway for TSA screening
- Increased GA aircraft arrivals before, and after, the TFR
  - Increased traffic may result in fanning





# Thank you!

