

**FOR OVERVIEW PURPOSE ONLY  
DRAWING NOT TO SCALE**

NOTE:  
THIS M.O.T. IS BASED ON MUTCD & THE FLORIDA DEPARTMENT OF TRANSPORTATION ROADWAY AND DESIGN STANDARDS. ALL TRAFFIC CONTROL DEVICES MUST BE SET AND PLACED BY PERSONS CERTIFIED IN TRAFFIC CONTROL DEVICE PLACEMENT AND PLANNING.

**WORK HOURS: 0700AM - 1700PM**



*Palmo Way will be used as a truck turn in for the trucks to back into the beach access corridor in order to unload pipe, fuel, mats, equipment, etc.*



**TAPER = 50' To 100'  
FLAGMEN**

**TABLE I  
CHANNELIZING DEVICE SPACING**

WORK ZONE SPEED (mph)	Max. Distance Between Devices (ft.)			
	Cones or Temporary Tubular Markers		Type I Barricades, Type II Barricades, Vertical Panels, or Drums	
	Taper	Tangent	Taper	Tangent
≤ 45	25	50	25	50

**TABLE 3  
WORK ZONE SIGN SPACING "X"**

Road Type	Min. Spacing (feet)
Arterial and collectors with Work Zone Speed ≤ 40 mph	<b>200</b>

**Legend**

- CHANNELIZING DEVICES
- FLAGLER / WORKER
- Work Area



*Theodore Howard Jr.*

Certificate: 612448  
Issued: 07/18/2023  
Expires: 07/07/2027  
Instructor: D.D.

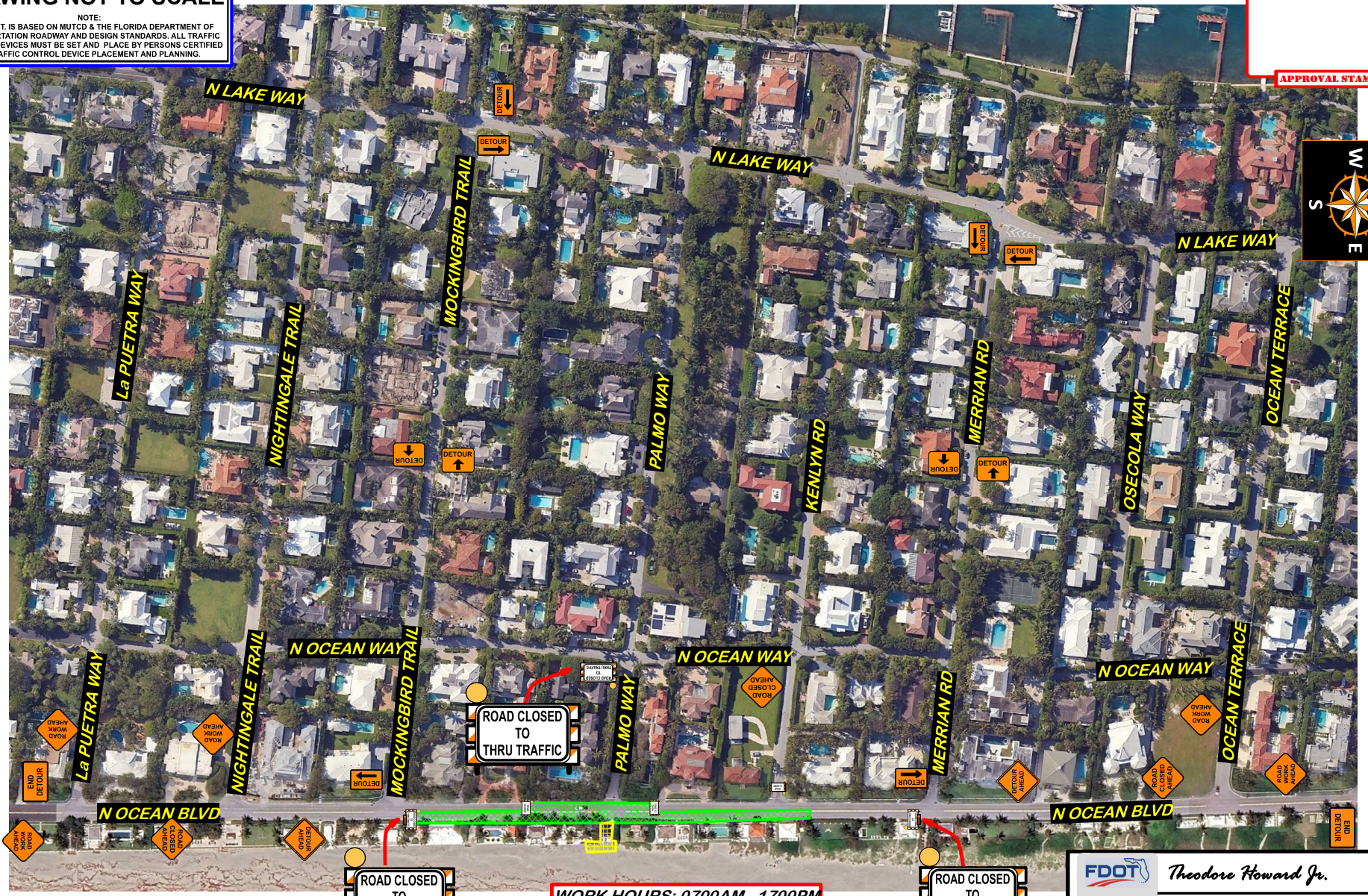
Has Completed a FDOT Approved Temporary Traffic Control: Advanced Course  
Training Provider:  
**ATSSA** American Traffic Safety Services Association (ATSSA)  
15 Riverside Parkway Ste. 100  
Frederickburg, VA 22406  
PH: 540-368-1701  
Verify this Certification at [www.motadmin.com](http://www.motadmin.com)

M.O.T. Design by: <i>Theodore Howard</i>	WEEKS MARINE CUSTOMER:	1251-1279 N Ocean Blvd PROJECT LOCATION:	TOWN OF PALM BEACH, FLORIDA PALM BEACH CO. CITY / COUNTY	Beach Re-Nourishment Project JOB / PO #	Avery A. Woodcock CONTACT PERSON:	1/9/2025 228.596.0065 DATE / PHONE #
---------------------------------------------	---------------------------	---------------------------------------------	----------------------------------------------------------------	--------------------------------------------	--------------------------------------	--------------------------------------------

**FOR OVERVIEW PURPOSE ONLY  
DRAWING NOT TO SCALE**

NOTE:  
THIS M.O.T. IS BASED ON MUTCD & THE FLORIDA DEPARTMENT OF  
TRANSPORTATION ROADWAY AND DESIGN STANDARDS. ALL TRAFFIC  
CONTROL DEVICES MUST BE SET AND PLACED BY PERSONS CERTIFIED  
IN TRAFFIC CONTROL DEVICE PLACEMENT AND PLANNING.

APPROVAL STAMP



**WORK HOURS: 0700AM - 1700PM**

Legend	
	CHANNELING DEVICES
	FLAGLER / WORKER
	Work Area

	<i>Theodore Howard Jr.</i>
Certificate: 612448	Has Completed a FDOT Approved Temporary Traffic Control: Advanced Course
Issued: 07/18/2023	Training Provider:
Expires: 07/07/2027	American Traffic Safety Services Association (ATSSA) 15 Riverside Parkway Ste. 100 Frederickburg, VA 22406 PH: 540-368-1701
Instructor: D.D.	SAFER ROADS SAVE LIVES
Verify this Certification at <a href="http://www.motadmin.com">www.motadmin.com</a>	

**M.O.T.**  
Design by: *Theodore Howard*

**WEEKS MARINE**  
CUSTOMER:

**1251-1279 N Ocean Blvd**  
PROJECT LOCATION:

**TOWN OF PALM BEACH, FLORIDA  
PALM BEACH CO.**  
CITY / COUNTY:

**Beach Re-Nourishment Project**  
JOB / PO #

**Avery A. Woodcock**  
CONTACT PERSON:

**1/9/2025**  
DATE / PHONE #

## TYPICAL STANDARD INDEX TO BE USED FOR REFERENCE ONLY

SHEET	TABLE OF CONTENTS
1	General Notes, TTC Tables
2	Definitions
	Temporary Traffic Control Devices
	Overhead Work
	Railroads
3	Sight Distance
	Above Ground Hazard
	Clear Zone Widths For Work Zones
	Superelevation
	Length Of Lane Closures
4	Overweight/Oversize Vehicles
	Lane Widths
	High-Visibility Safety Apparel
	Speed Reduction Signing
5	Flagger Control
	Survey Work Zones
6	Signs
	Work Zone Sign Supports
7	Commonly Used Warning and Regulatory Signs In Work Zones
8	Wanholes/Crosswalks/Joints
	Truck Mounted Attenuators
	Signals
	Channelizing Devices
	Channelizing Devices Consistency
9	Advanced Warning Arrow Boards
	Drop-Offs In Work Zones
10	Business Entrance
	Temporary Asphalt Separator
11	Channelizing Devices Notes
	Temporary Barrier Notes
	Pavement Markings

### GENERAL NOTES:

- This Index contains information specific to the Federal and State guidelines and standards for the preparation of traffic control plans and for the execution of traffic control in work zones, for construction and maintenance operations and utility work on highways, roads and streets on the State Highway System. Certain requirements in this Index are based on the high volume nature of State Highways. For highways, roads and streets off the State Highway System, the local agency (City/County) having jurisdiction may adopt requirements based on the minimum requirements provided in the MUTCD.
- Use this Index in accordance with the Plans and Indexes 102-601 through 102-680. Indexes 102-601 through 102-680 are Department-specific typical applications of commonly encountered situations. Adjust device location or number thereof as recommended by the Worksite Traffic Supervisor and approved by the Engineer. Devices include, but are not limited to, flaggers, portable temporary signals, signs, pavement markings, and channelizing devices. Comply with MUTCD or applicable Department criteria for any changes and document the reason for the change.
- Except for emergencies, any road closure on State Highway System must comply with Section 335.15, F.S.

**TABLE 1  
CHANNELIZING DEVICE SPACING**

Work Zone Speed (mph)	Max. Spacing (feet)			
	Cones or Temporary Tubular Markers		Type I Barricades, Type II Barricades, Vertical Panels, or Drums	
	Taper	Tangent	Taper	Tangent
≤ 45	25	50	25	50
≥ 50	25	50	50	100

**TABLE 2  
TAPER LENGTH "L"**

Work Zone Speed (mph)	Min. Length (feet)
≤ 40	$L = \frac{WS^2}{60}$
≥ 45	$L = WS$

Where: W = width of offset in feet  
S = speed in mph

**TABLE 3  
WORK ZONE SIGN SPACING "X"**

Road Type	Min. Spacing (feet)
Arterials and Collectors with Work Zone Speed ≤ 40 mph	200
Arterials and Collectors with Work Zone Speed ≥ 45 mph	500
Limited Access Roadways *	1,500

\* For Limited access roadways with work zone speed ≤ 55 mph, the minimum spacing may be reduced in accordance with the MUTCD and as approved by the Engineer.

**TABLE 4  
BUFFER LENGTH "B"**

Work Zone Speed (mph)	Min. Length (feet)
25	155
30	200
35	250
40	305
45	360
50	425
55	495
60	570
65	645
70	730

Note: When Buffer Length "B" cannot be attained due to geometric constraints, use the greatest length possible, but not less than 155 feet.

### SYMBOLS:

- Work Area
- Channelizing Device
- Work Zone Sign
- Type III Barricade
- Lane Identification and Direction of Traffic

Theodore Howard Jr.

---

**Certificate:**  
612448  
Issued: 07/18/2023  
Expires: 07/07/2027  
Instructor: D.D.

**Has Completed a FDOT Approved Temporary Traffic Control: Advanced Course**

**Training Provider:**

**American Traffic Safety Services Association (ATSSA)**  
15 Riverside Parkway Ste. 100  
Frederickburg, VA 22406  
PH: 540-368-1701

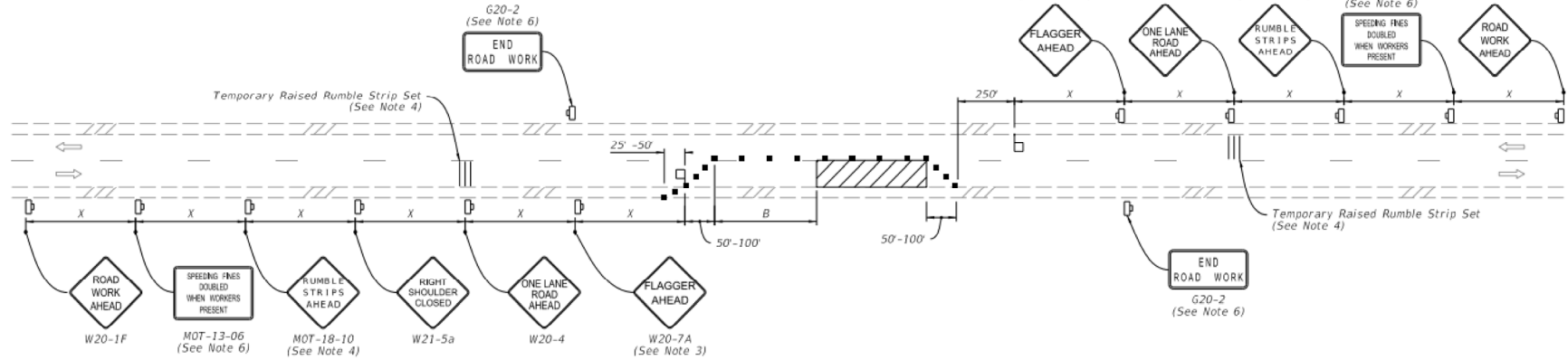
SAFER ROADS SAVE LIVES

Verify this Certification at [www.motadmin.com](http://www.motadmin.com)

10/2/2023 10:52:44 AM

LAST REVISION 11/01/23	DESCRIPTION:	FY 2024-25 STANDARD PLANS	<b>GENERAL INFORMATION FOR TRAFFIC CONTROL THROUGH WORK ZONES</b>	INDEX 102-600	SHEET 1 of 11
---------------------------	--------------	------------------------------	-------------------------------------------------------------------	------------------	------------------

# TYPICAL STANDARD INDEX TO BE USED FOR REFERENCE ONLY



### NOTES:

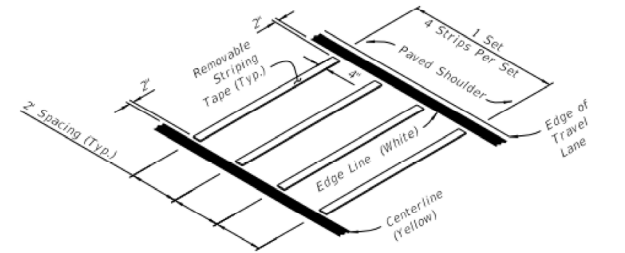
- This Index applies to Two-Lane, Two-Way Roadways with work within the traveled way.
- L = Taper Length  
B = Buffer Length  
X = Work Zone Sign Spacing  
See Index 102-600 for "L", "B", "X" and channelizing device spacing values.
- Optionally, use "Flagger Ahead" sign with symbol (W20-7) instead of "Flagger Ahead" sign with text (W20-7A).
- Use temporary raised rumble strips when the existing posted speed is 55 mph or greater and the work duration is greater than 60 minutes. If temporary raised rumble strips are not used, omit "Rumble Strips Ahead" signs (MOT-18-10) and associated work zone sign spacing.
- Additional one-way control may be provided by the following means:
  - Flag-carrying vehicle
  - Official vehicle
  - Pilot vehicles
  - Traffic signals

When flaggers are the sole means of one-way control, the flaggers must be in sight of each other or in direct communication at all times.

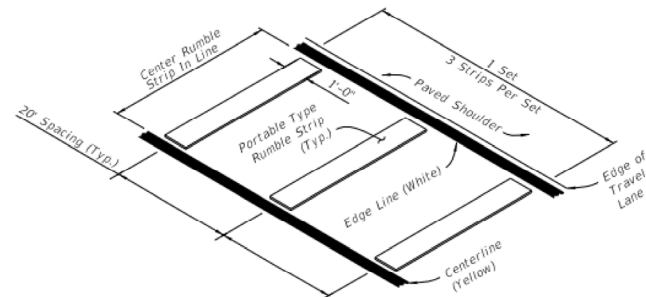
### SYMBOLS:

- Work Area
- Channelizing Device (See Index 102-600)
- Work Zone Sign
- Flagger
- Lane Identification and Direction of Traffic

- The "Speeding Fines Doubled When Workers Present" signs (MOT-13-06) and "End Road Work" signs (G20-2), along with associated work zone sign spacing, may be omitted when the work operation will be in place for 24 hours or less.
- Automated Flagger Assistance Devices (AFADS) may be used in accordance with Specification Sections 102, 990 and the APL vendor drawings.
- Railroad Crossings:
  - If an active railroad crossing is located closer to the Work Area than the queue length plus 300 feet, extend the Buffer Space as shown on Sheet 2.
  - If the queuing of vehicles across an active railroad crossing cannot be avoided, provide a uniformed traffic control officer or flagger at the highway-rail grade crossing to prevent vehicles from stopping within the highway-rail grade crossing, even if automatic train warning devices are in place.



OPTION - 1  
REMOVABLE STRIPING TYPE



OPTION - 2  
PORTABLE TYPE

RUMBLE STRIP SETS

**Theodore Howard Jr.**

**Certificate:**  
612448

**Issued:** 07/18/2023

**Expires:** 07/07/2027

**Instructor:** D.D.

**Has Completed a FDOT Approved Temporary Traffic Control: Advanced Course**

**Training Provider:**  
**ATSSA** American Traffic Safety Services Association (ATSSA)  
15 Riverside Parkway Ste. 100  
Frederickburg, VA 22406  
PH: 540-368-1701

SAFER ROADS SAVE LIVES

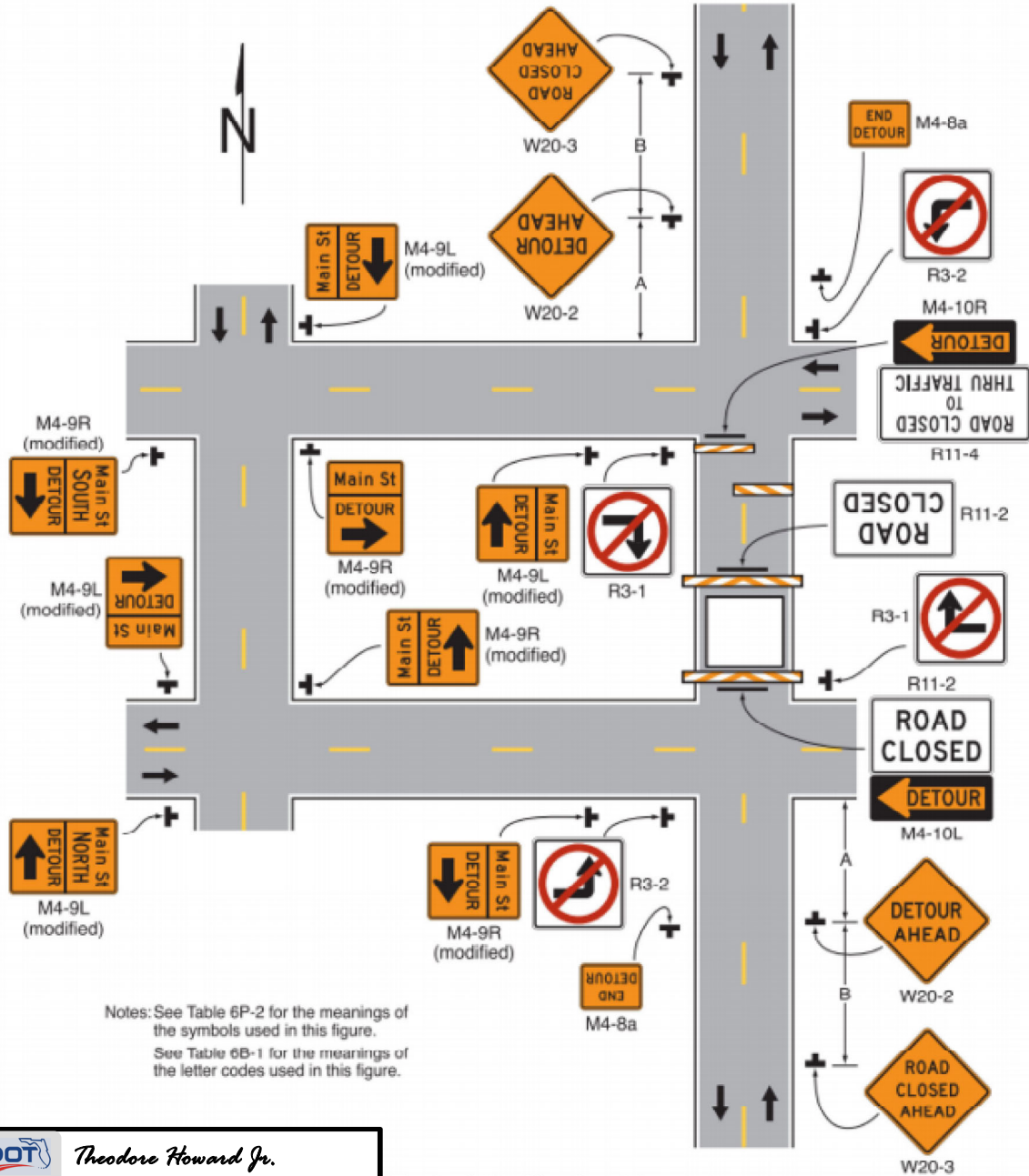
Verify this Certification at [www.motadmin.com](http://www.motadmin.com)

8/28/2023 8:23:47 AM

LAST REVISION 11/01/21	DESCRIPTION:	FY 2024-25 STANDARD PLANS	TWO-LANE, TWO-WAY WORK WITHIN THE TRAVEL WAY	INDEX 102-603	SHEET 1 of 2
---------------------------	--------------	------------------------------	-------------------------------------------------	------------------	-----------------

**BOOK STANDARD FOR REFERENCE ONLY**

**Figure 6P-20. Detour for a Closed Street (TA-20)**



Notes: See Table 6P-2 for the meanings of the symbols used in this figure.  
See Table 6B-1 for the meanings of the letter codes used in this figure.

**Typical Application 20**

	<i>Theodore Howard Jr.</i>
Certificate: 612448	Has Completed a FDOT Approved Temporary Traffic Control: Advanced Course
Issued: 07/18/2023	Training Provider:
Expires: 07/07/2027	American Traffic Safety Services Association (ATSSA) 15 Riverside Parkway Ste. 100 Frederickburg, VA 22406 PH: 540-368-1701
Instructor: D.D.	SAFER ROADS SAVE LIVES
	Verify this Certification at <a href="http://www.motadmin.com">www.motadmin.com</a>