



Land Planning
Landscape Architecture
Landscape Management

December 6, 2024

Town of Palm Beach
Planning, Zoning, & Building Department
360 S. County Road
Palm Beach, Florida 33480

ATTN: *Public Works*
Re: 284 Monterey Road - Landscape Architecture
Our Ref # 22070.00 LA

LETTER OF INTENT

Current zoning for the project is R-B LOW DENSITY RESIDENTIAL

Our current proposal, for improvements to the site, does not include any architectural changes to the approved house. We are proposing the following revisions to the originally approved ARCOM plans.

The proposed changes include:

- Existing wall, columns and fence to remain and to be restored / repaired where necessary.
 - Restoration requires relief from the Town of Palm Beach Right-of-Way manual. Manual allows items within site triangles to at most be 30" HT.
 - Existing structure is 4' HT .

The attached plan reflects the above-outlined revisions.

If there are any questions regarding this project, please feel free to reach out to our office.

Thank you for your assistance.

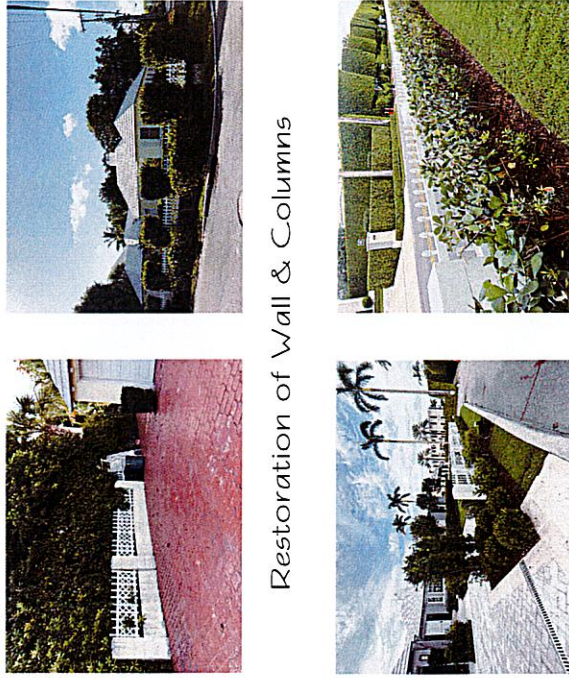
Dustin Mizell, MLA RLA #6666784

Environment Design Group

Existing Wall & Columns

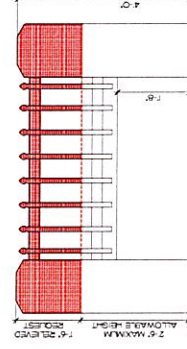
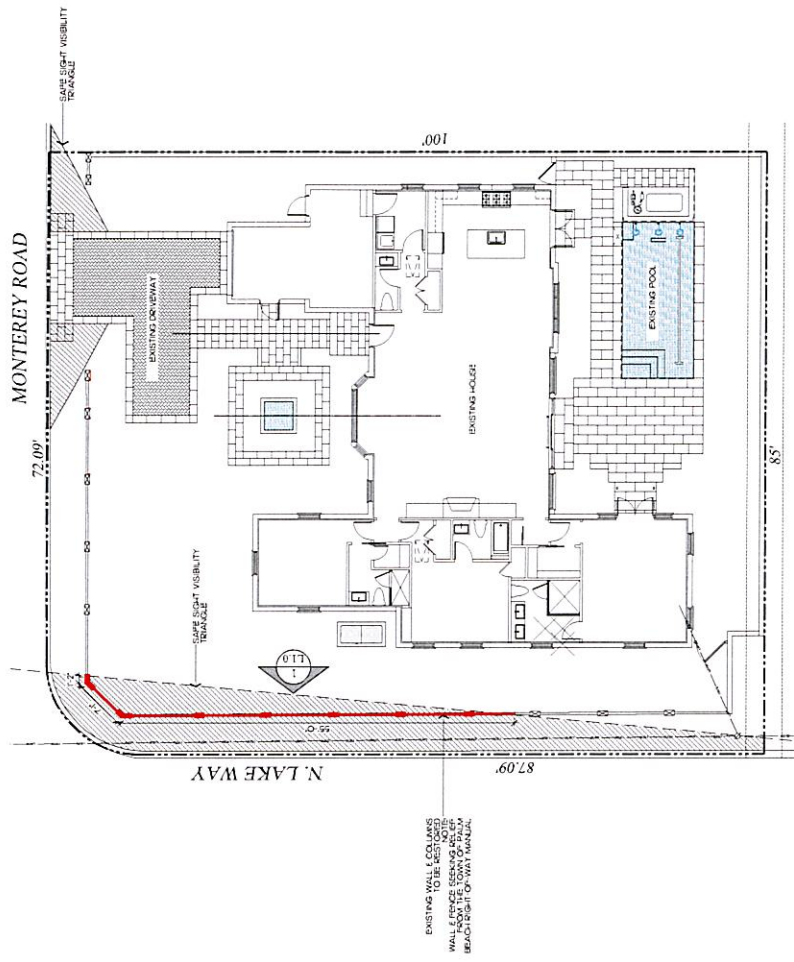


Restoration of Wall & Columns



2024
1-800-427-4770
www.landscapegroup.com

2024
Landscape Group, Inc. is a professional landscape architecture firm located in the San Francisco Bay Area. We have been in business since 1980 and have a proven track record of providing high-quality landscape architecture services to our clients. Our team of experienced professionals is dedicated to creating beautiful, functional landscapes that enhance the value of your property. We offer a wide range of services, including site analysis, master planning, design, construction, and maintenance. Our clients include residential homeowners, commercial businesses, and public agencies. We are proud to be a member of the American Society of Landscape Architects (ASLA) and the California Society of Landscape Architects (CSLA). We are committed to providing excellent customer service and ensuring that our clients are satisfied with the results of our work. We are currently seeking qualified individuals for various positions within our firm. If you are interested in joining our team, please send us your resume and portfolio to: hr@landscapegroup.com. We are an equal opportunity employer and do not discriminate on the basis of race, gender, or ethnicity.

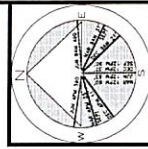


Wall & Columns Elevation
SCALE: 3/4" = 1'-0"

Public Workers Site Plan
SCALE IN FEET 0' 8' 16' 24'

LANDSCAPE GROUP, INC.
1945 Santa Monica Blvd., Suite 200
Santa Monica, CA 90404
Phone: 310.310.1111
Fax: 310.310.1112
www.landscapegroup.com

Private Residence
284 Monterey Road
Palm Beach
FL 33480



JOB NUMBER: 20240001
DATE: 12.01.2024

SHEET L1.0