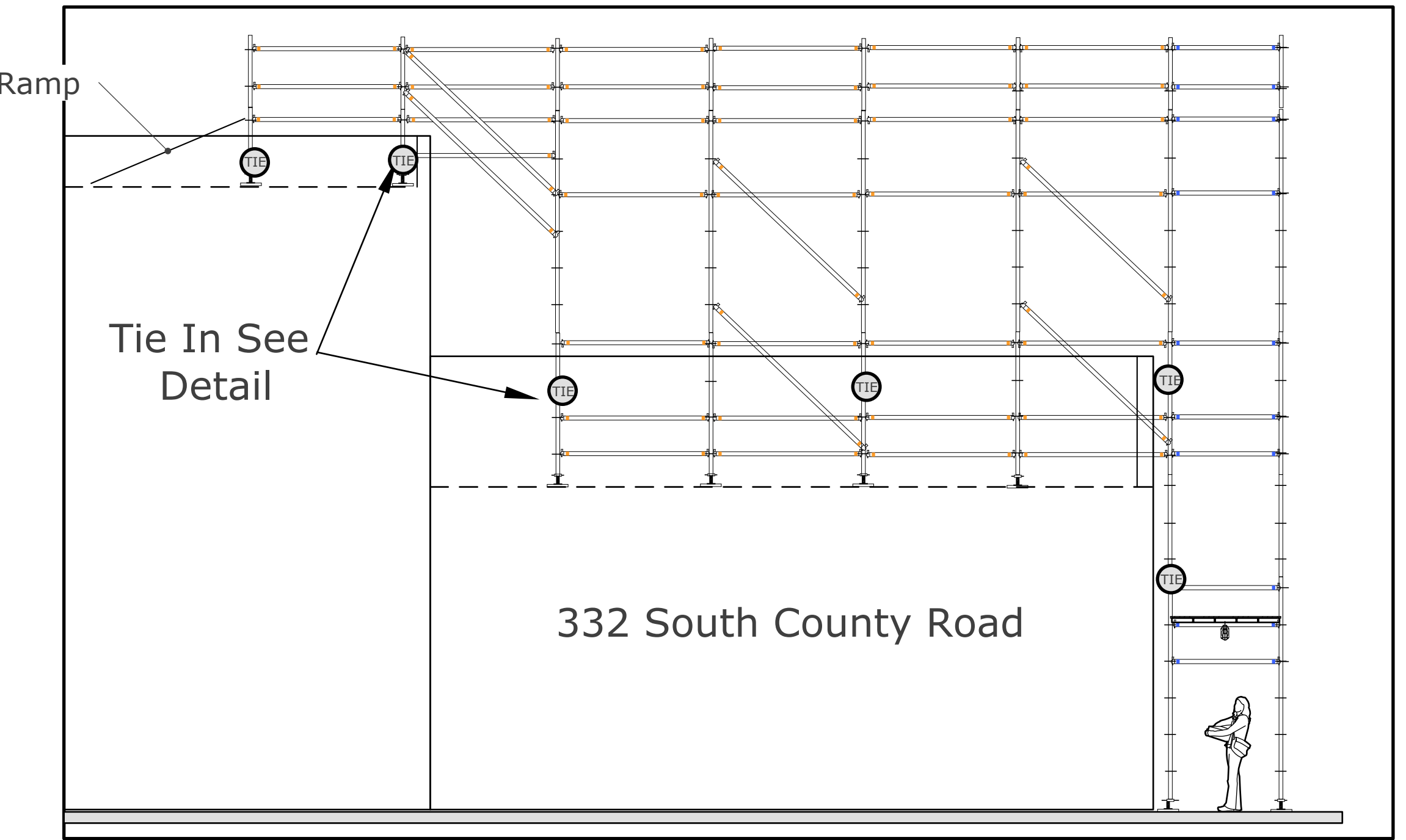


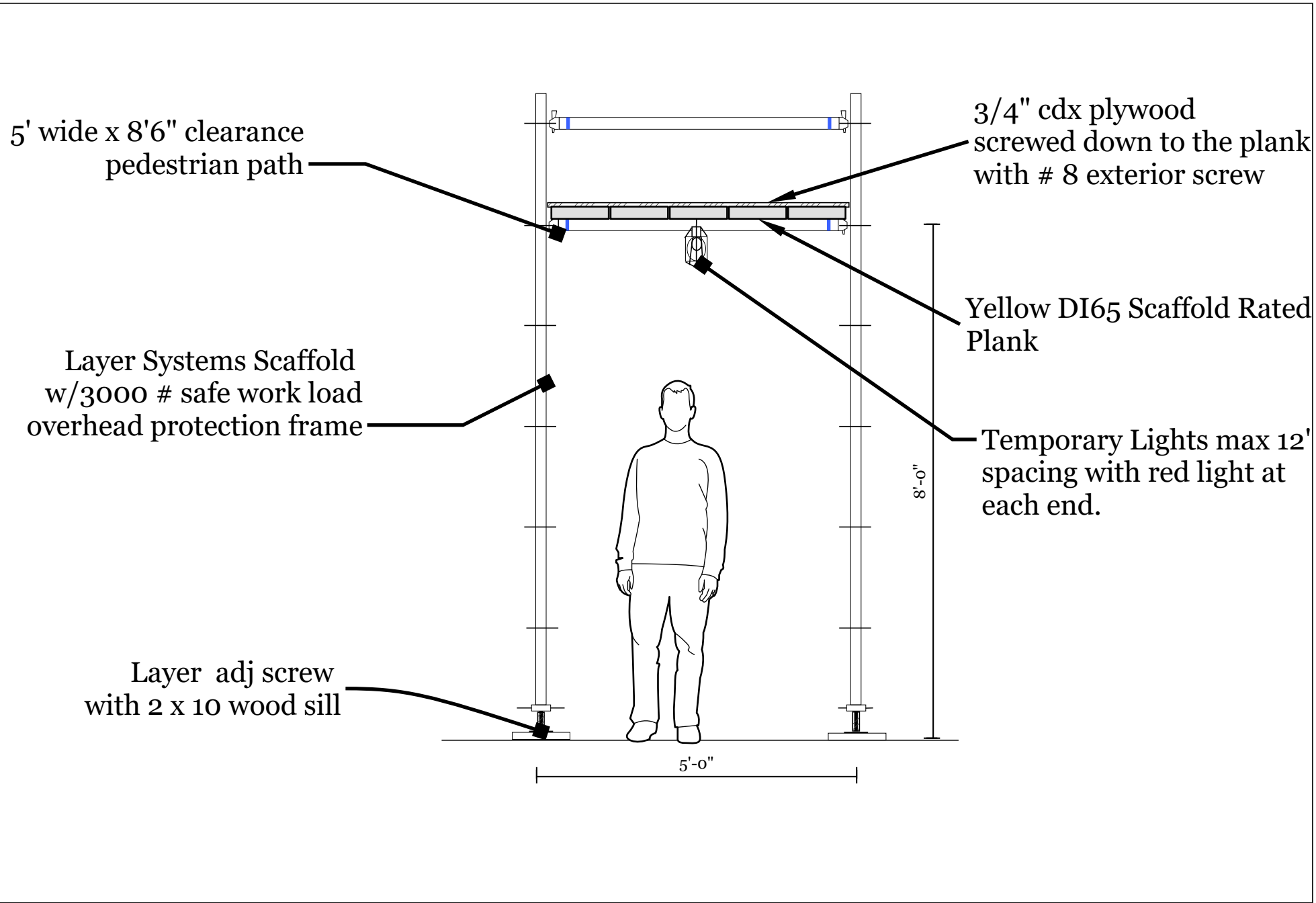
Site Plan



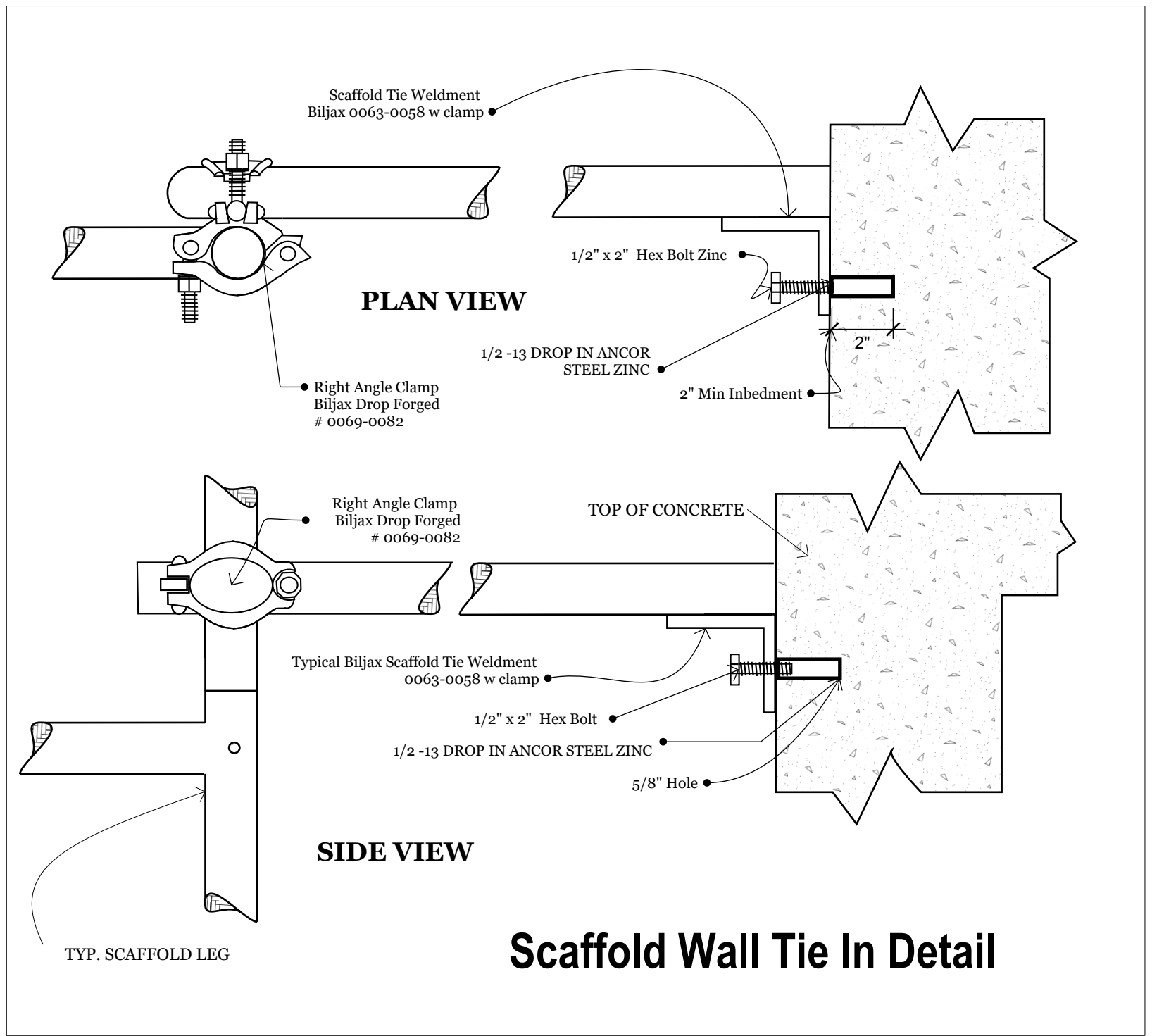
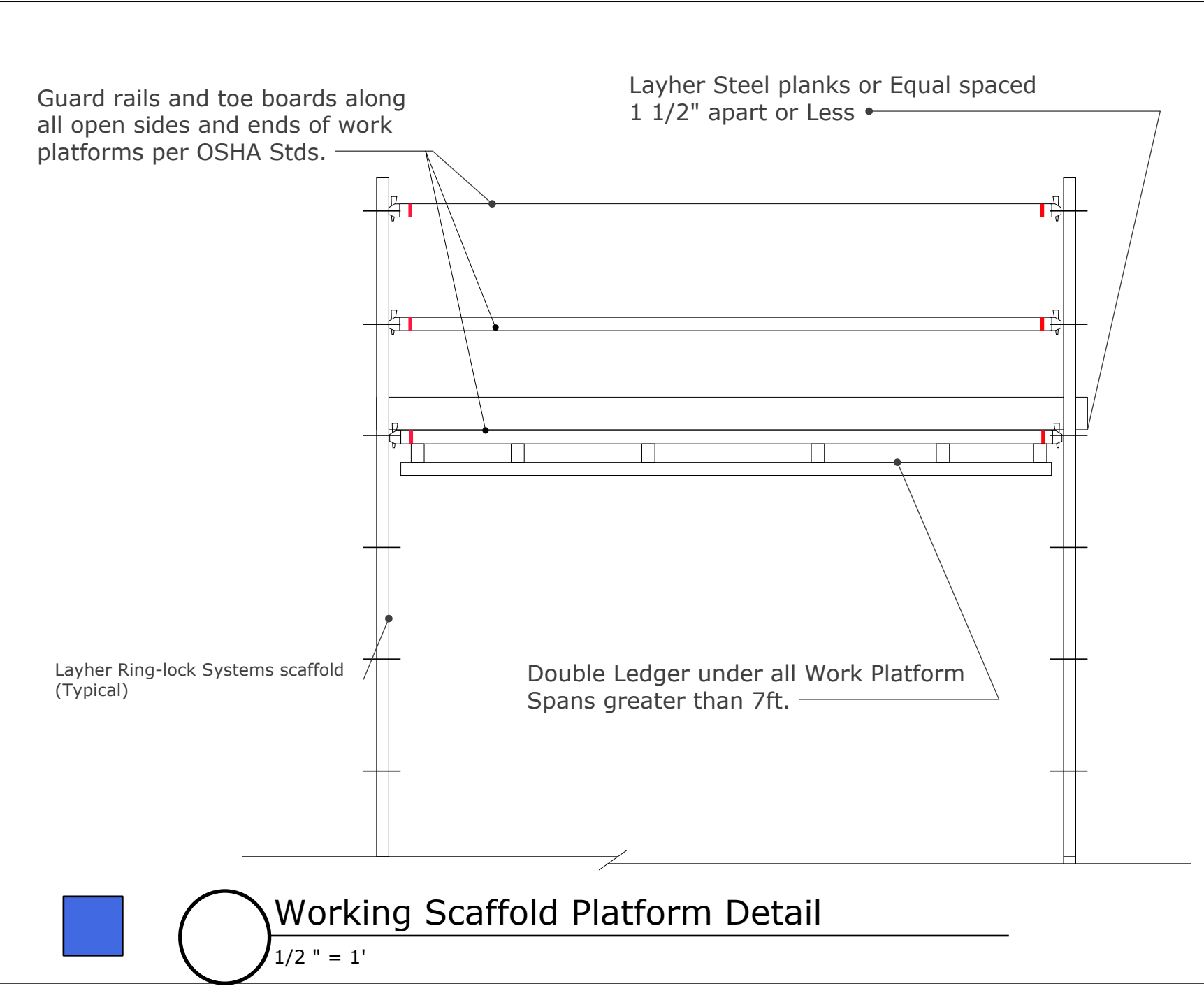
Cross Section of the Walkout Ramp 3/16" = 1'



Map

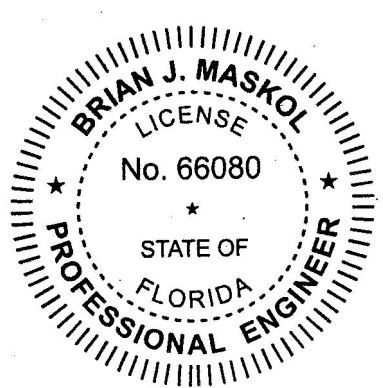


Overhead Protection Detail



**HAYNES**  
Scaffolding & Supply, Inc.

- General Notes:
1. All construction and materials shall conform to the 2023 Florida Building Code and OSHA standards.
  2. Install per Manufactures specifications and recommendations.
  3. All scaffolding shown in this drawing are for illustrative purposes only.



Carpenters Roofing  
Overhead Protection  
332 South County Road.

**SUMMIT**  
DESIGN & FORENSICS, INC.  
Summit Design & Forensic Inc.  
585 NW Mercantile Place  
Port St. Lucie, Florida 33936