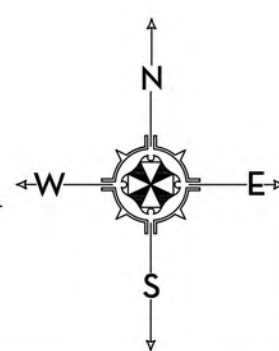




0 2 4 8 16 24 FEET
SCALE: 3/32" = 1'-0"



MARIO F. NIEVERA

State of Florida
Landscape Architect
Registration No.
6666856

HARDSCAPE PLAN
315 CHAPEL HILL RD.

PALM BEACH, FLORIDA

07 OCTOBER 2024
23 SEPTEMBER 2024 - SECOND SUBMITTAL
05 SEPTEMBER 2024-FIRST SUBMITTAL

SCALE: 3/32" = 1'-0"



NIEVERA WILLIAMS
DESIGN

625 N. Flagler Drive
Suite 502
West Palm Beach, FL 33401
P: 561-659-2820
F: 561-659-2113

NIEVERAWILLIAMS.COM



ARC-24-0085
ZON-24-0044

MARIO F. NIEVERA

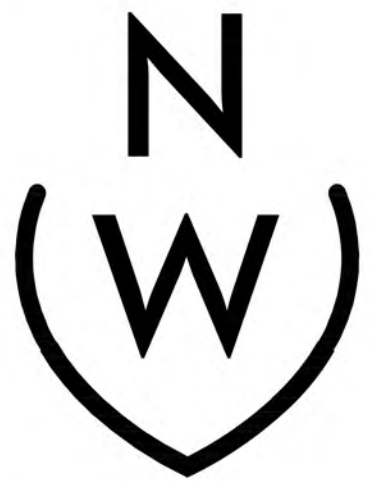
State of Florida
Landscape Architect
Registration No.
6666856

SCALE: 3/32" = 1'-0"

ELEVATION
315 CHAPEL HILL RD.

PALM BEACH, FLORIDA

23 SEPTEMBER 2024 - SECOND SUBMITTAL
05 SEPTEMBER 2024-FIRST SUBMITTAL



NIEVERA WILLIAMS
DESIGN

625 N. Flagler Drive
Suite 502
West Palm Beach, FL 33401
P: 561-659-2820
F: 561-659-2113

NIEVERAWILLIAMS.COM

EL1

ARC-24-0085
ZON-24-0044



1 EAST ELEVATION
EL1 SCALE: 3/8" = 1'-0"



2 EAST ELEVATION
EL1 SCALE: 3/8" = 1'-0"



1 WEST ELEVATION
EL2 SCALE: $\frac{1}{8}" = 1'-0"$



1 WEST ELEVATION
EL2 SCALE: $\frac{1}{8}" = 1'-0"$

MARIO F. NIEVERA

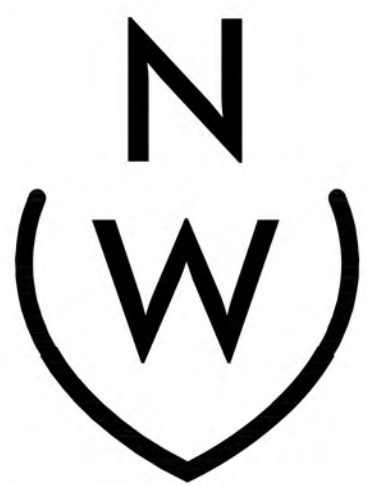
State of Florida
Landscape Architect
Registration No.
6666856

SCALE: $\frac{3}{32}" = 1'-0"$

ELEVATION
315 CHAPEL HILL RD.

PALM BEACH, FLORIDA

23 SEPTEMBER 2024 - SECOND SUBMITTAL
05 SEPTEMBER 2024 - FIRST SUBMITTAL



NIEVERA WILLIAMS
DESIGN

625 N. Flagler Drive
Suite 502
West Palm Beach, FL 33401
P: 561-659-2820
F: 561-659-2113

NIEVERAWILLIAMS.COM

EL2

ARC-24-0085
ZON-24-0044



1 NORT ELEVATION
EL3 SCALE: $\frac{3}{8}$ " = 1'-0"



2 SOUTH ELEVATION
EL3 SCALE: $\frac{3}{8}$ " = 1'-0"

MARIO F. NIEVERA

State of Florida
Landscape Architect
Registration No.
6666856

ELEVATION
315 CHAPEL HILL RD.

PALM BEACH, FLORIDA

23 SEPTEMBER 2024 - SECOND SUBMITTAL
05 SEPTEMBER 2024 - FIRST SUBMITTAL

SCALE: $\frac{3}{32}$ " = 1'-0"



NIEVERA WILLIAMS
DESIGN

625 N. Flagler Drive
Suite 502
West Palm Beach, FL 33401
P: 561-659-2820
F: 561-659-2113

NIEVERAWILLIAMS.COM

EL3

ARC-24-0085
ZON-24-0044



1 FRONT ENTRY GATE ELEVATION
SK1 SCALE: 1" = 1'-0"

MARIO F. NIEVERA

State of Florida
Landscape Architect
Registration No.
6666856

SITE DETAILS

315 CHAPEL HILL RD.

PALM BEACH, FLORIDA

07 OCTOBER 2024 - SECOND SUBMITTAL

23 SEPTEMBER 2024 - FIRST SUBMITTAL

SCALE: AS NOTED



NIEVERA WILLIAMS
DESIGN

625 N. Flagler Drive
Suite 502
West Palm Beach, FL 33401
P: 561-659-2820
F: 561-659-2113

NIEVERAWILLIAMS.COM

SK1

ARC-24-0085
ZON-24-0044



1 VEHICULAR GATE ELEVATION
SK2 SCALE: 1" = 1'-0"

MARIO F. NIEVERA

State of Florida
Landscape Architect
Registration No.
6666856

SITE DETAILS
315 CHAPEL HILL RD.

PALM BEACH, FLORIDA

07 OCTOBER 2024 - SECOND SUBMITTAL

23 SEPTEMBER 2024 - FIRST SUBMITTAL

SCALE: AS NOTED



NIEVERA WILLIAMS
DESIGN

625 N. Flagler Drive
Suite 502
West Palm Beach, FL 33401
P: 561-659-2820
F: 561-659-2113

NIEVERAWILLIAMS.COM

SK2

ARC-24-0085
ZON-24-0044



1
SK3 VEHICULAR GATE ELEVATION AT STAFF PARKING
SCALE: 1" = 1'-0"

MARIO F. NIEVERA

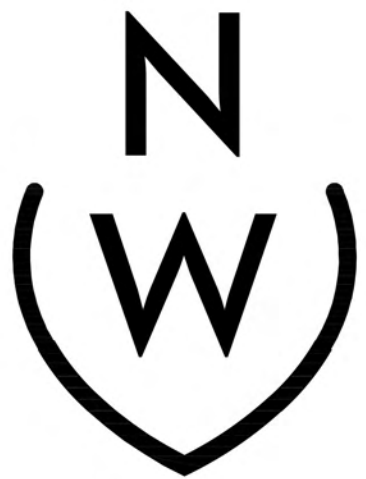
State of Florida
Landscape Architect
Registration No.
6666856

SITE DETAILS
315 CHAPEL HILL RD.

PALM BEACH, FLORIDA

07 OCTOBER 2024
23 SEPTEMBER 2024 - SECOND SUBMITTAL
05 SEPTEMBER 2024-FIRST SUBMITTAL

SCALE: AS NOTED



NIEVERA WILLIAMS
DESIGN

625 N. Flagler Drive
Suite 502
West Palm Beach, FL 33401
P: 561-659-2820
F: 561-659-2113

NIEVERAWILLIAMS.COM

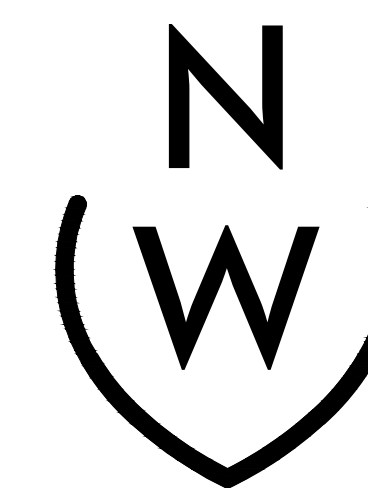
SK3

ARC-24-0085
ZON-24-0044

State of Florida
Landscape Architect
Registration No.
6666856

PALM BEACH, FLORIDA

07 OCTOBER 2024
23 SEPTEMBER 2024 - SECOND SUBMITTAL
05 SEPTEMBER 2024 - FIRST SUBMITTAL



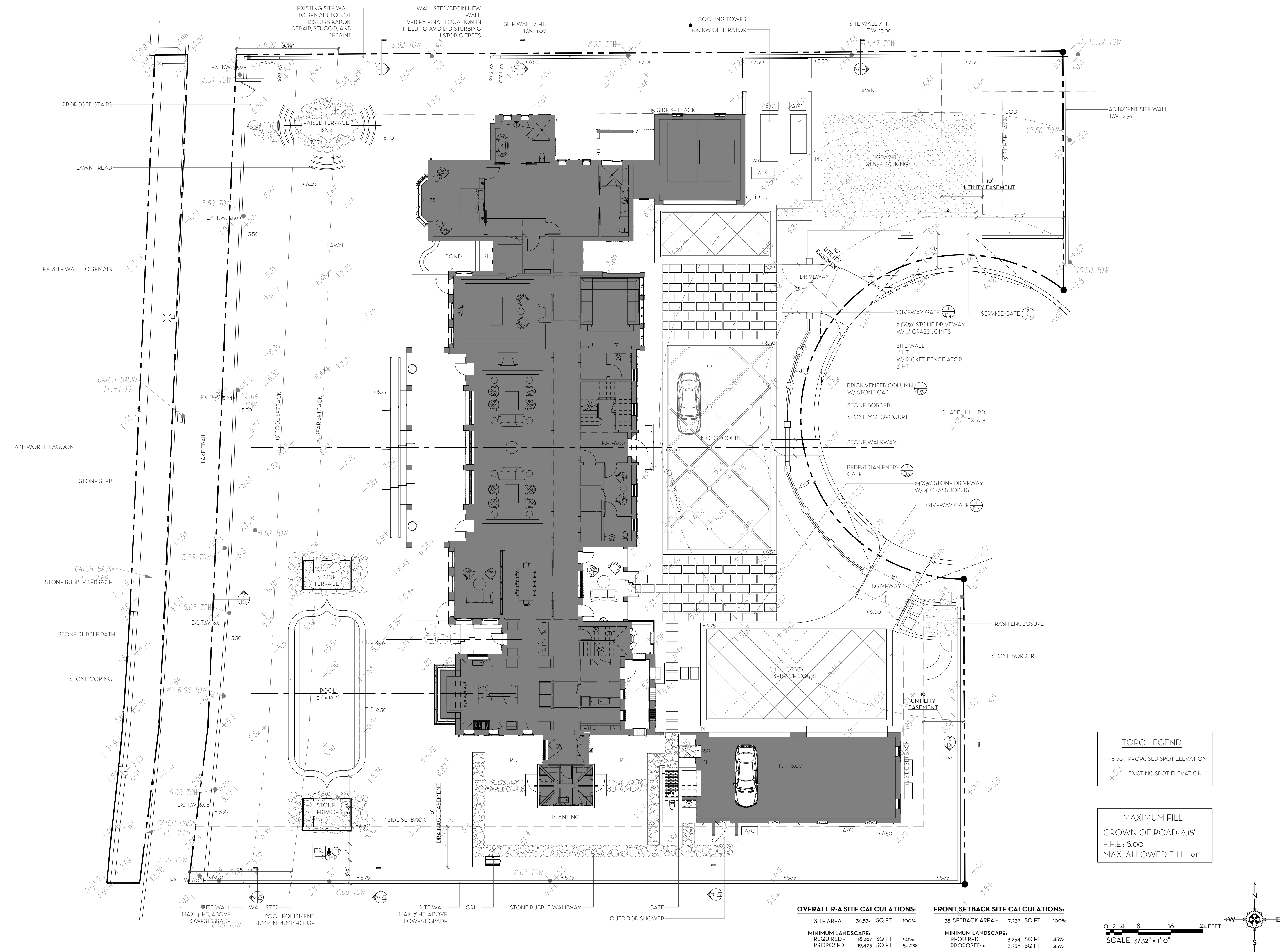
NIEVERA WILLIAMS
DESIGN

625 N. Flagler Drive
Suite 502
West Palm Beach, FL 33401
P: 561-659-2820
F: 561-659-2113

NIEVERAWILLIAMS.COM



ARC-24-0085
ZON-24-0044





TABBY CONCRETE

CAST STONE

MARIO F. NIEVERA

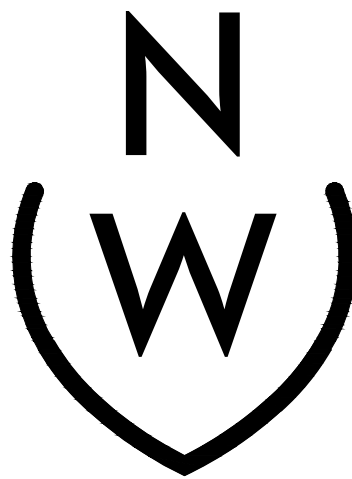
State of Florida
Landscape Architect
Registration No.
6666856

EXTERIOR MATERIALS AND FINISHES
315 CHAPEL HILL RD.

PALM BEACH, FLORIDA

07 OCTOBER 2024 - SECOND SUBMITTAL

23 SEPTEMBER 2024 - FIRST SUBMITTAL



NIEVERA WILLIAMS
DESIGN

625 N. Flagler Drive
Suite 502
West Palm Beach, FL 33401
P: 561-659-2820
F: 561-659-2113

NIEVERAWILLIAMS.COM

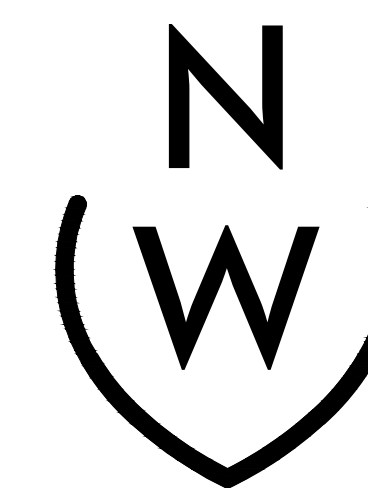
L2

ARC-24-0085
ZON-24-0044

State of Florida
Landscape Architect
Registration No.
6666856

PALM BEACH, FLORIDA

07 OCTOBER 2024
23 SEPTEMBER 2024 - SECOND SUBMITTAL
05 SEPTEMBER 2024-FIRST SUBMITTAL



NIEVERA WILLIAMS
DESIGN

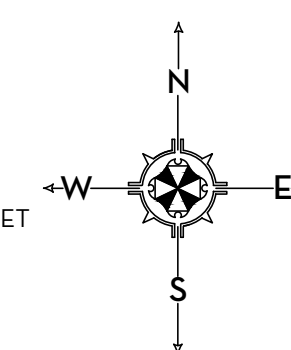
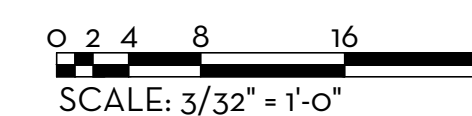
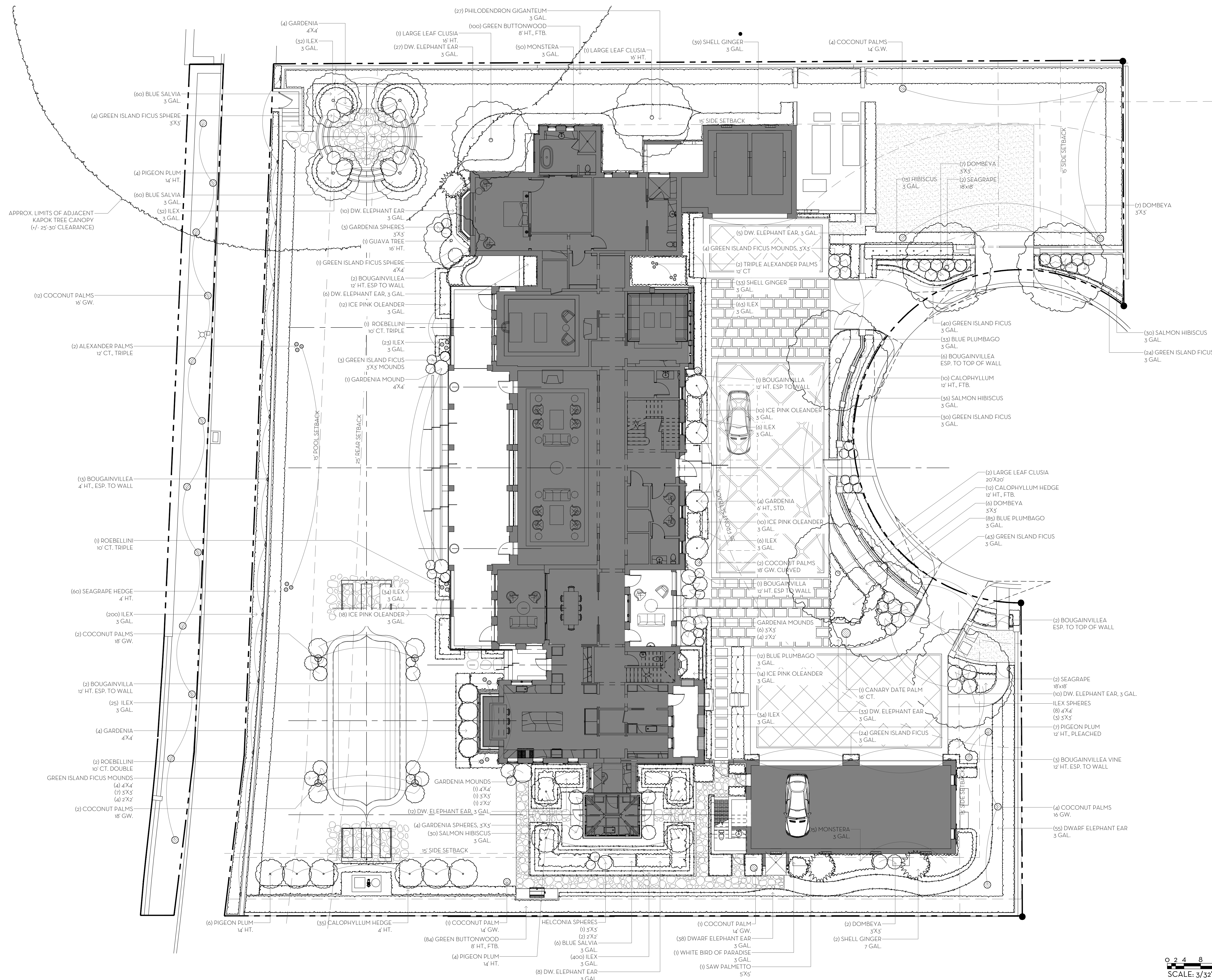
625 N. Flagler Drive
Suite 502
West Palm Beach, FL 33401
P: 561-659-2820
F: 561-659-2113

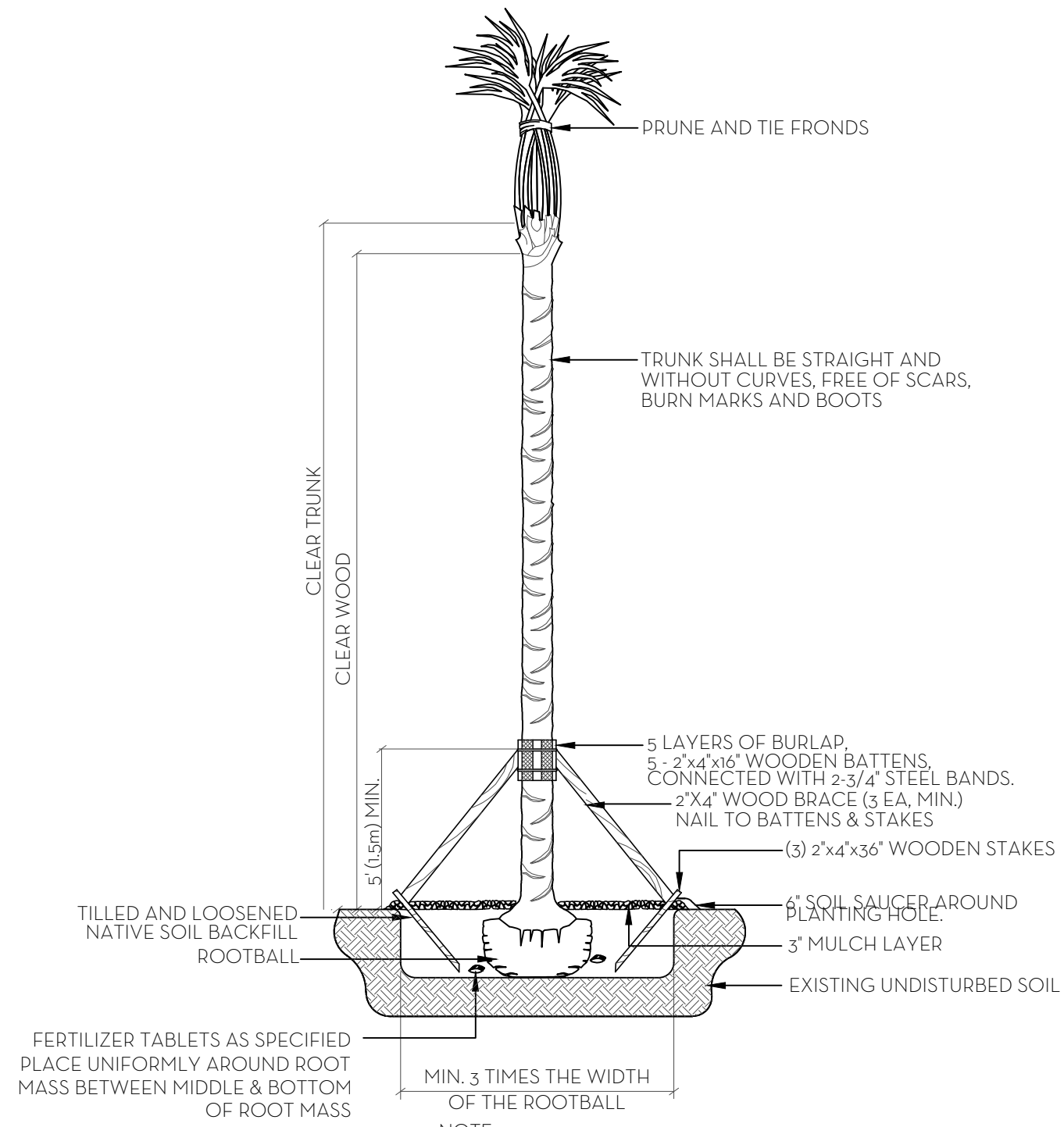
NIEVERAWILLIAMS.COM

LP1

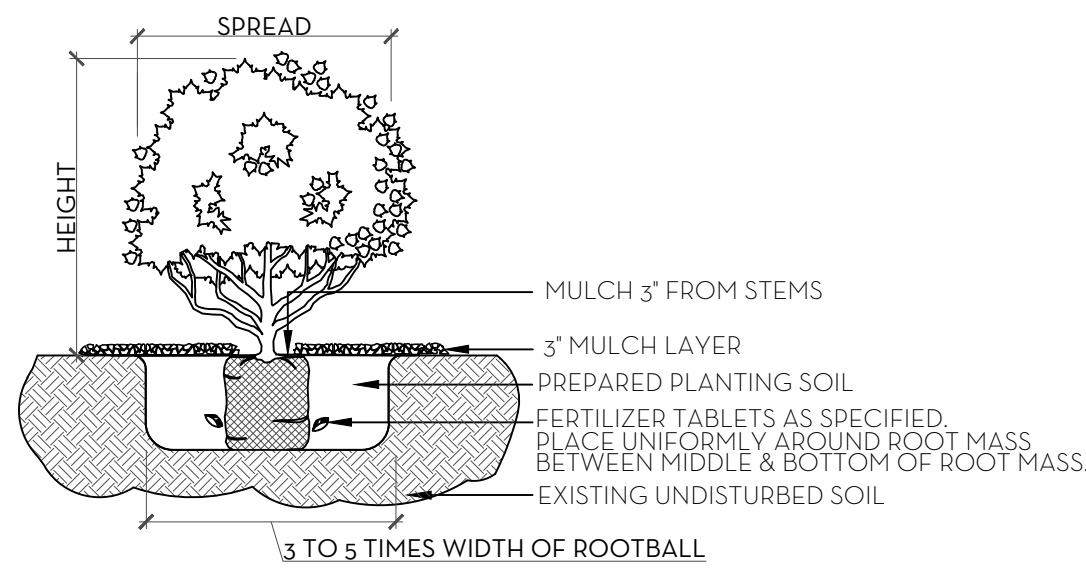
ARC-24-0085
ZON-24-0044

SCALE: 3/32" = 1'-0"



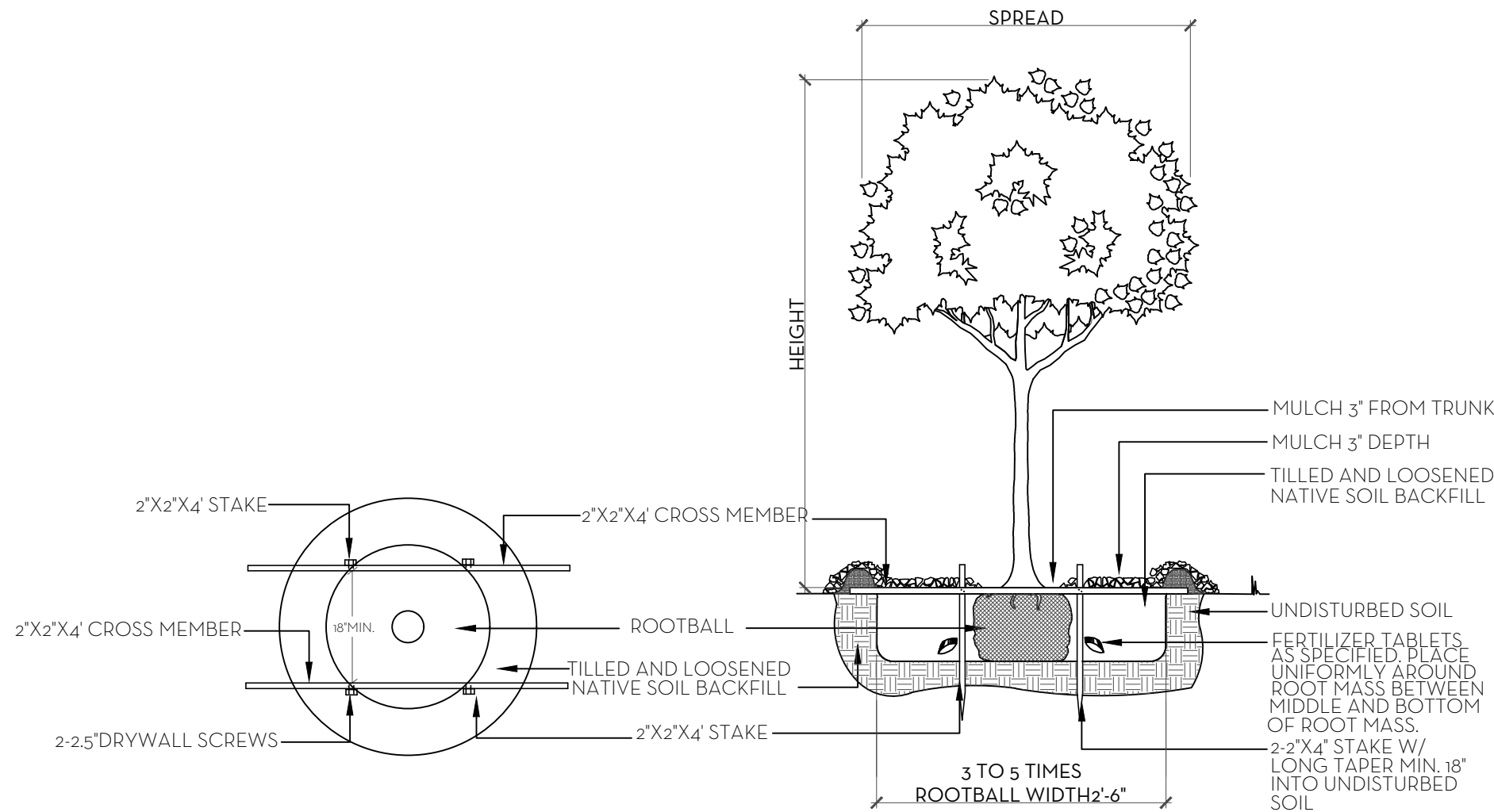


PALM PLANTING DETAIL
N.T.S.



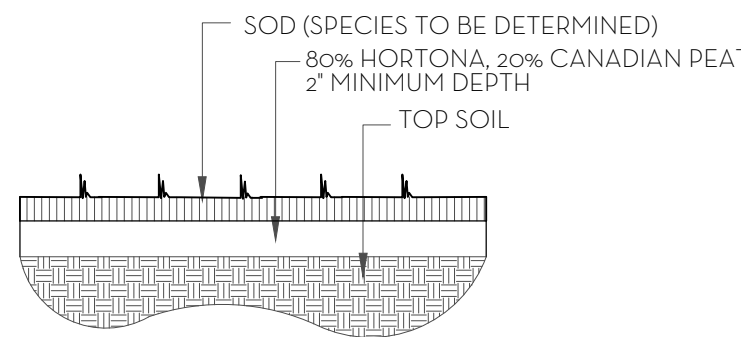
SHRUB & GROUNDCOVER PLANTING DETAIL
N.T.S.

- NOTES:
1. ALL WOOD SHALL BE SPRUCE OR PINE-NOT PRESSURE TREATED.
 2. CROSS TIES SHALL NOT CROSS OVER WOODY ROOTS.
 3. REMOVE ALL STRING &/OR WIRE WRAPPED AROUND TRUNK.
 4. REMOVE ALL STRAPS, ROPES, WIRE, &/OR STRINGS USED TO LIFT THE ROOTBALL.
 5. REMOVE ALL BURLAP &/OR WIRE FROM THE TOP OF THE ROOT BALL.
 6. TOP OF ROOTBALL TO BE SET 2" BELOW FINISH SURROUNDING FINISH GRADE.

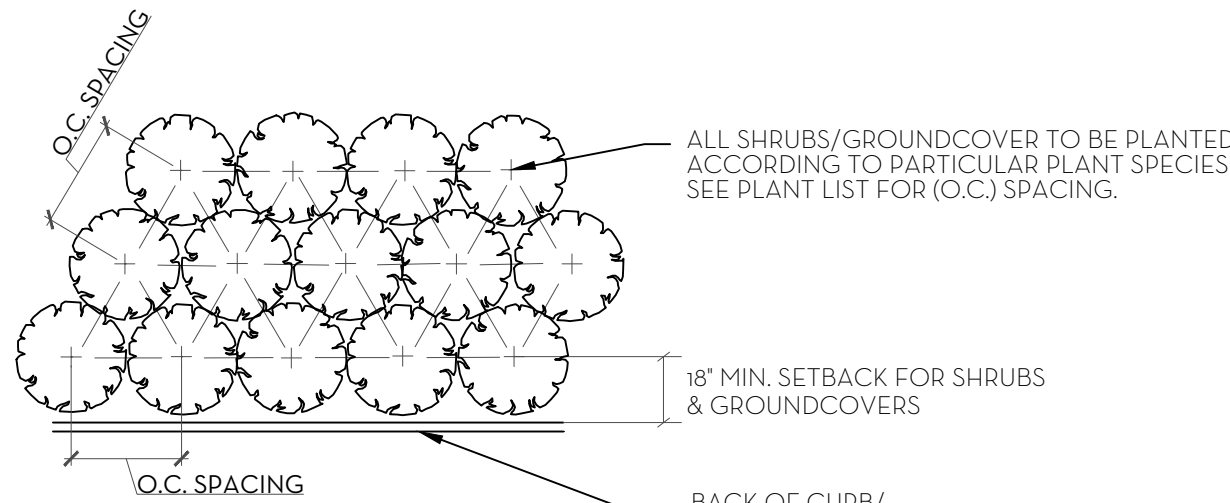


TREE PLANTING DETAIL
N.T.S.

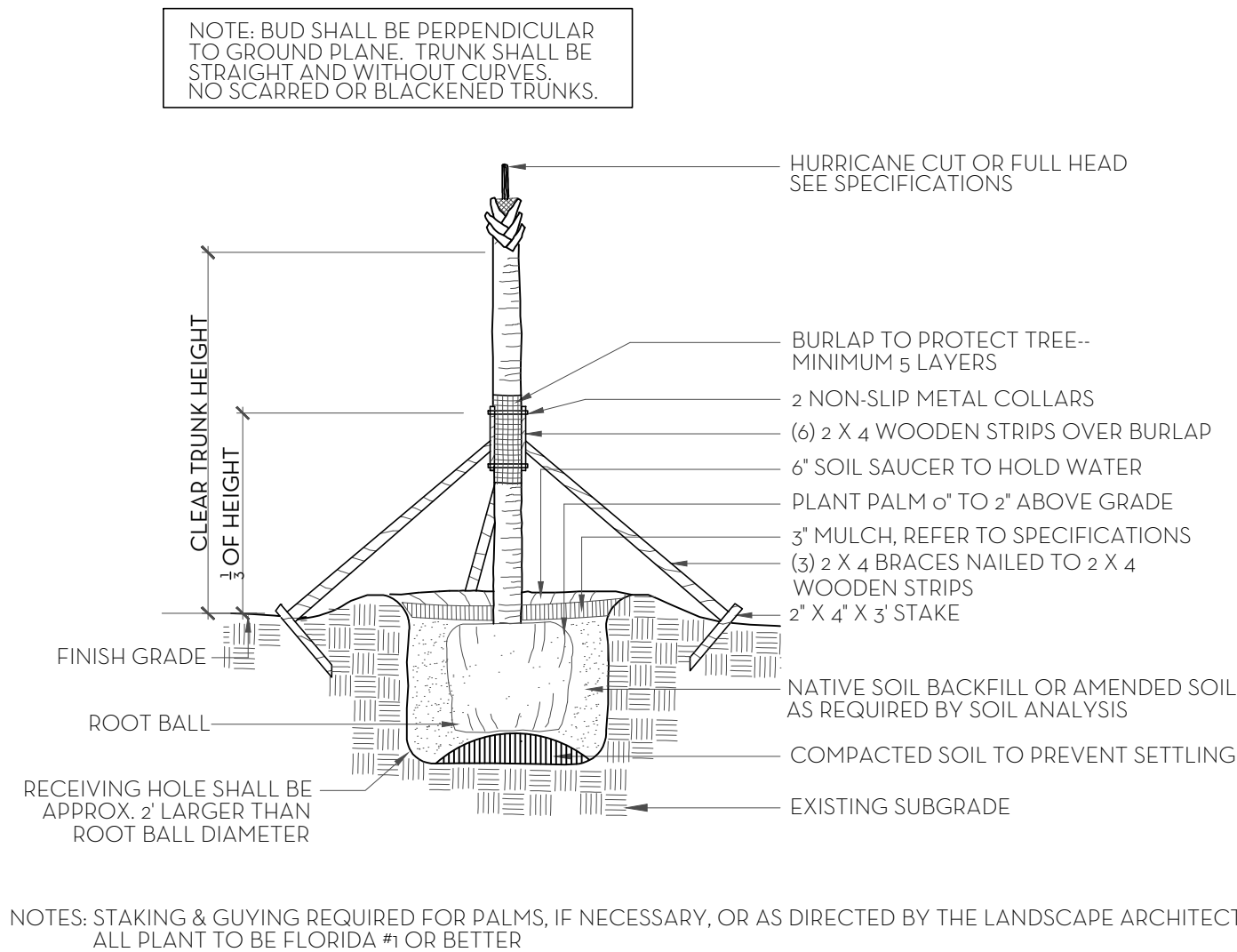
- SOD NOTES:
1. ROUGH GRADE PROVIDED BY CONTRACTOR 4'-5" BELOW GRADE
 2. RAKE AND REMOVE ALL CONSTRUCTION DEBRIS
 3. PRIOR TO LAYING SOD ADD 80% HORTANA AND 20% CANADIAN PEAT, 2" MIN.
 4. AFTER LAYING SOD APPLY NECESSARY PESTICIDES AND FUNGICIDES.
 5. IRRIGATE REGULARLY, REFER TO IRRIGATION DRAWINGS



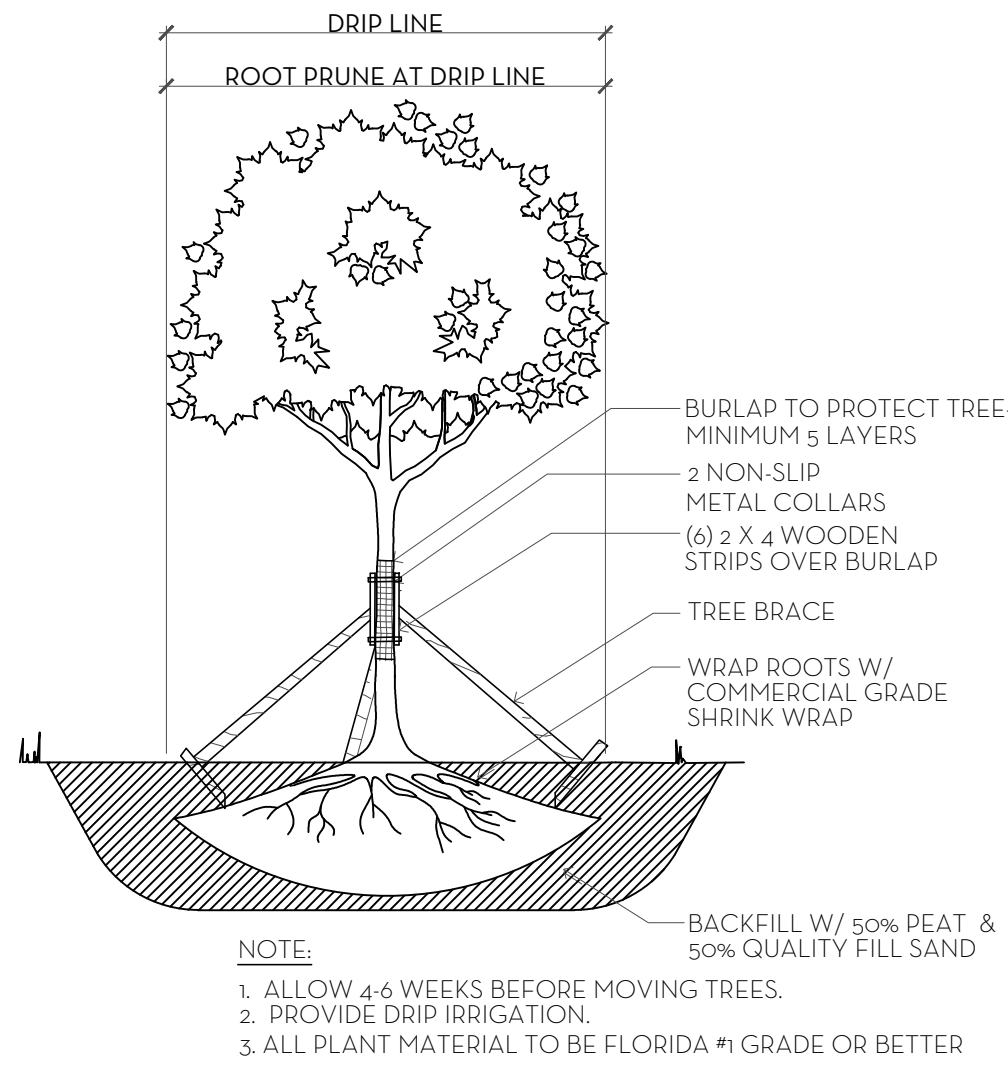
SOD PLANTING DETAIL
N.T.S.



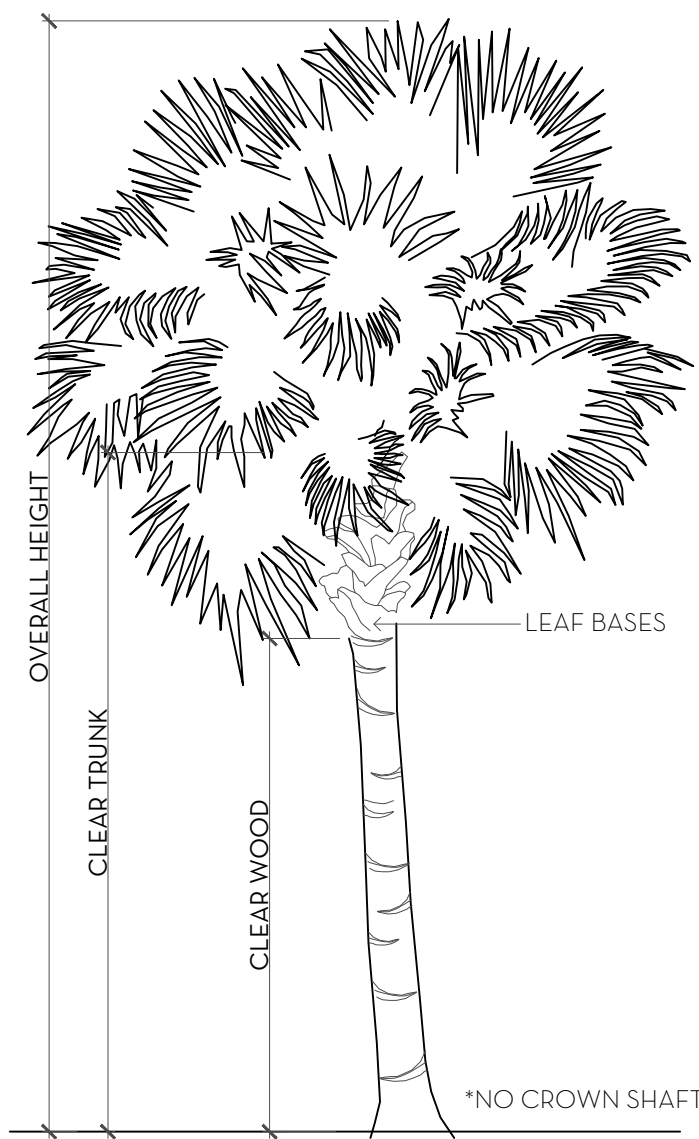
PLANT SPACING DETAIL
N.T.S.



PALM TREE PLANTING AND STAKING DETAIL
N.T.S.



TREE ROOT PRUNING DETAIL
N.T.S.



PALM SPECIFICATION DETAIL
N.T.S.

FERTILIZATION

SHRUBS AND TREES
ALL TREES AND SHRUBS SHALL BE FERTILIZED WITH "AGRIFORM" 20-15-15 PLANTING TABLETS AT TIME OF INSTALLATION AND PRIOR TO COMPLETION OF PIT BACKFILLING. TABLETS SHALL BE PLACED UNIFORMLY AROUND THE ROOT MASS OF A DEPTH THAT IS BETWEEN THE MIDDLE AND BOTTOM OF THE ROOT MASS.

APPLICATION RATE:

| | |
|---------------|---------------------|
| 1 GALLON CAN: | 1 - 21 GRAM TABLET |
| 3 GALLON CAN: | 2 - 21 GRAM TABLETS |
| 5 GALLON CAN: | 3 - 21 GRAM TABLETS |
| 7 GALLON CAN: | 4 - 21 GRAM TABLETS |

TREES: 3 - 21 GRAM TABLETS EACH 1/2" OF CALIPER
PALMS: 7 - 21 GRAM TABLETS

GROUNDCOVER AREAS
ALL GROUNDCOVER AREAS SHALL RECEIVE FERTILIZATION WITH "OZMOCOTE" TIME RELEASE FERTILIZER AS PER MANUFACTURER'S SPECIFICATIONS.



315 Chapel Hill

October 02, 2024

| Landscape Material Schedule | | | | | |
|-----------------------------|-------------------------|--------------------------------------|----------|----------------------|------|
| Item No. | Common Name | Botanical Name | Quantity | Specification | |
| TREES | | | | | |
| 1 | Seagrape | Coccoloba uvifera | 4 | 18'X18' | * |
| | Large Leaf Clusia | Clusia rosea | 2 | 20'X20' | * |
| | Large Leaf Clusia | Clusia rosea | 2 | 16' HT. | * |
| | Pigeon Plum | Coccoloba diversifolia | 14 | 14' HT. | * |
| | Pigeon Plum | Coccoloba diversifolia | 7 | 12' HT. Pleached | * |
| | Guava tree | Psidium littorale | 1 | 16' HT. | |
| | Gardenia | Gardenia jasminoides 'Miami Supreme' | 4 | 6' ht. STD | |
| | | | 34 | | 85% |
| PALMS | | | | | |
| | Coconut Palm | Cocos nucifera | 4 | 14' GW. | |
| | Coconut Palm | Cocos nucifera | 16 | 16' GW. | |
| | Coconut Palm | Cocos nucifera | 4 | 18' GW. | |
| | Coconut Palm | Cocos nucifera | 2 | 18' GW. Curved | |
| | Canary Island Date Palm | Phoenix canariensis | 1 | 16' CT. | |
| | Roebelin Date Palms | Phoenix roebelenii | 2 | 10' CT. Double | |
| | Roebelin Date Palms | Phoenix roebelenii | 2 | 10' CT. Triple | |
| | Alexander Palm | Ptychosperma elegans | 4 | 12' CT. Triple | |
| | | | 29 | | |
| SHRUB/VINE | | | | | |
| | Green Buttonwood | Conocarpus erectus | 184 | 8' HT. FTB | * |
| | Calophyllum Hedge | Calophyllum brasiliense | 29 | 12' HT., FTB | |
| | Calophyllum Hedge | Calophyllum brasiliense | 35 | 4' HT., FTB | |
| | Seagrape Hedge | Coccoloba uvifera | 60 | 4' HT., FTB | * |
| | Gardenia | Gardenia jasminoides 'Miami Supreme' | 10 | 4'x4' Mounds | |
| | Gardenia | Gardenia jasminoides 'Miami Supreme' | 14 | 3'x3' Mounds | |
| | Gardenia | Gardenia jasminoides 'Miami Supreme' | 5 | 2'x2' Mounds | |
| | Dombeya | Dombeya x 'Seminole' | 22 | 3'x3' | |
| | Bougainvillea | Bougainvillea ssp | 8 | ESP to top of wall | |
| | Bougainvillea | Bougainvillea ssp | 9 | 12' HT. Esp. to wall | |
| | Bougainvillea | Bougainvillea ssp | 13 | 4' HT. Esp. to wall | |
| | Ilex | Ilex cassine | 8 | 4'x4' Spheres | * |
| | Ilex | Ilex cassine | 3 | 3'x3' Spheres | * |
| | Shell Ginger | Alpinia zerumbet | 2 | 7 Gal. | |
| | Saw Palmetto | Serenoa repens | 1 | 5'x5' | * |
| | White Bird of Paradise | Strelitzia nicolai | 1 | 3 Gal. | |
| | Heliconia | Heliconia rostrata | 1 | 3'x3' | |
| | Heliconia | Heliconia rostrata | 2 | 3'x3' | |
| | Green Island Ficus | Ficus microcarpa 'Green Island' | 5 | 4'x4' Mounds | |
| | Green Island Ficus | Ficus microcarpa 'Green Island' | 18 | 3'x3' Mounds | |
| | Green Island Ficus | Ficus microcarpa 'Green Island' | 4 | 2'x2' Mounds | |
| | | | 434 | | 59% |
| GROUND COVER | | | | | |
| | Ilex | Ilex vomitoria | 855 | 3 GAL. | * |
| | Dwarf Elephant Ear | Alocasia - Dwarf | 204 | 3 GAL. | |
| | Philodendron Giganteum | Philodendron giganteum | 27 | 3 GAL. | |
| | Monstera | Monstera deliciosa | 65 | 3 GAL. | |
| | Shell Ginger | Alpinia zerumbet | 72 | 3 GAL. | |
| | Hibiscus | Hibiscus ssp | 15 | 3 GAL. | |
| | Salmon Hibiscus | Hibiscus ssp | 96 | 3 GAL. | |
| | Green Island Ficus | Ficus microcarpa 'Green Island' | 191 | 3 GAL. | |
| | Blue Plumbago | Plumbago Auriculata 'Imperial Blue' | 130 | 3 GAL. | |
| | Ice Pink Oleander | Nerium oleander 'Ice Pink' | 64 | 3 GAL. | |
| | Blue Salvia | Salvia 'Mystic Spires Blue' | 126 | 3 GAL. | |
| | | | 1845 | | 36% |
| | | | | | 3599 |

| Landscape Legend | | |
|------------------|---|------------------------------------|
| Line # | Property Address: | 315 Chapel Hill |
| 2 | Lot Area (sq. ft.): | 36,534 sq ft |
| 3 | | REQUIRED PROPOSED |
| 4 | andscape Open Space (LOS) (Sq Ft and %) | 18,267 (50%) 19,425 (54.2%) |
| 5 | LOS to be altered (Sq Ft and %) | N/A N/A |
| 6 | Perimeter LOS (Sq Ft and %) | N/A N/A |
| 7 | Front Yard LOS (Sq Ft and %) | 3,254 (45%) 3,256 (45%) |
| 8 | Native Trees % | 30% (number of trees) 85% |
| 9 | Native Shrubs & Vines % | 30% (number of shrubs & vines) 59% |
| 10 | Native Groundcover % | 30% (groundcover area) 36% |

To determine qualifying native vegetation use either:

the Institute for Regional Conservation Natives for Your Neighborhood FL Statewide Plant List

OR

the Florida Native Plant Society Native Plants for Your Area List

Note: Modification of >50% of existing landscape/greenscape are subject to minimum native plant requirements and must submit a landscape and irrigation plan for review.

This table shall be included on the landscape species index sheet as prepared by a licensed landscape architect and landscape openspace data shall be incorporated on to corresponding zoning legend.

See Ord. 003-2023

REV BF 20230727

MARIO F. NIEVERA

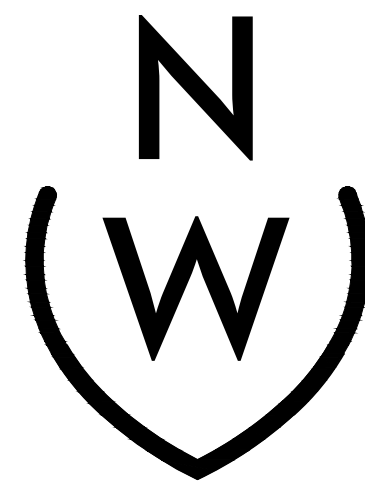
State of Florida
Landscape Architect
Registration No.
6666856

PLANT LIST AND DETAILS

315 CHAPEL HILL RD.

PALM BEACH, FLORIDA

07 OCTOBER 2024
23 SEPTEMBER 2024 - SECOND SUBMITTAL
05 SEPTEMBER 2024-FIRST SUBMITTAL



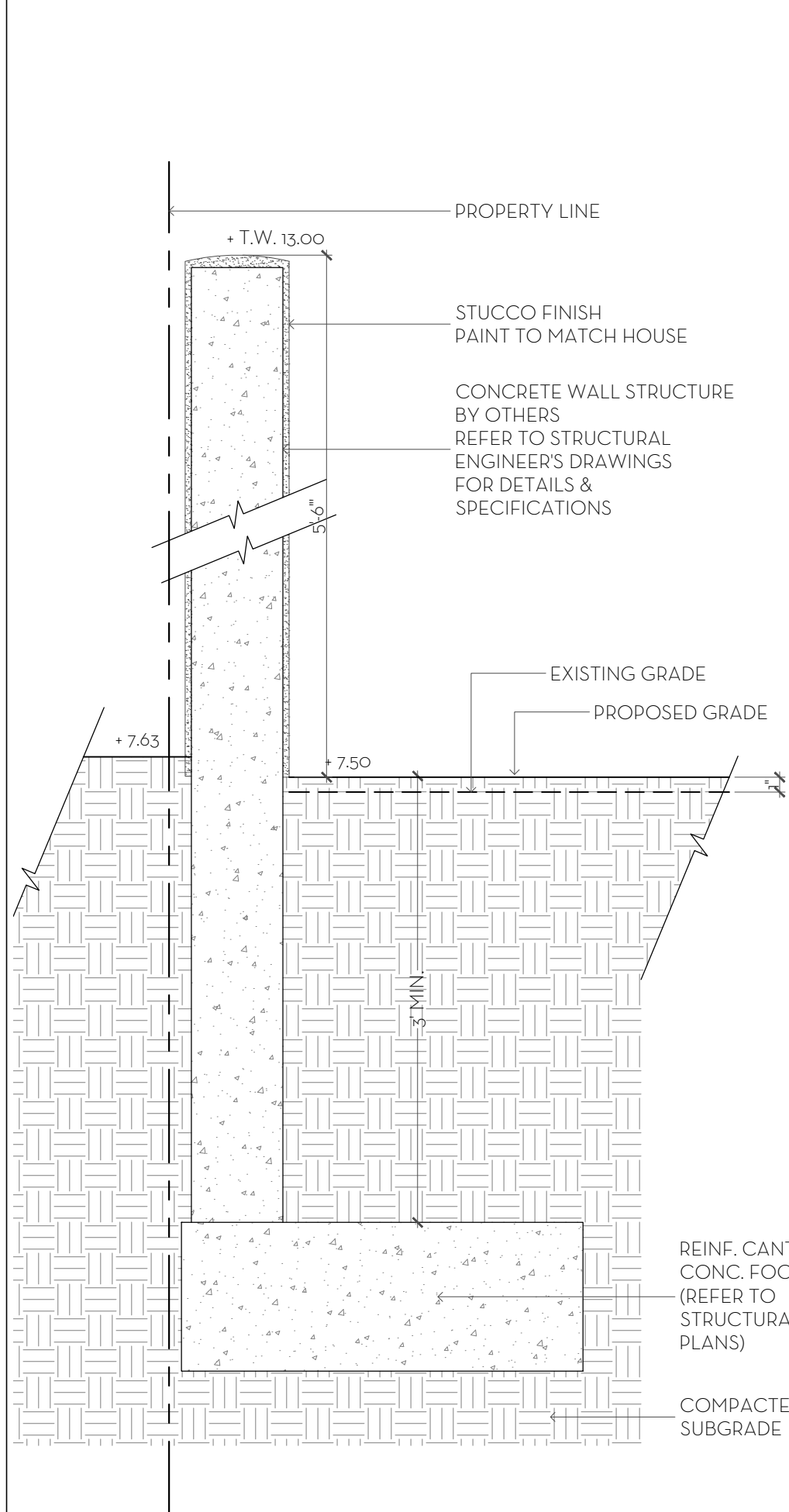
NIEVERA WILLIAMS
DESIGN

625 N. Flagler Drive
Suite 502
West Palm Beach, FL 33401
P: 561-659-2820
F: 561-659-2113

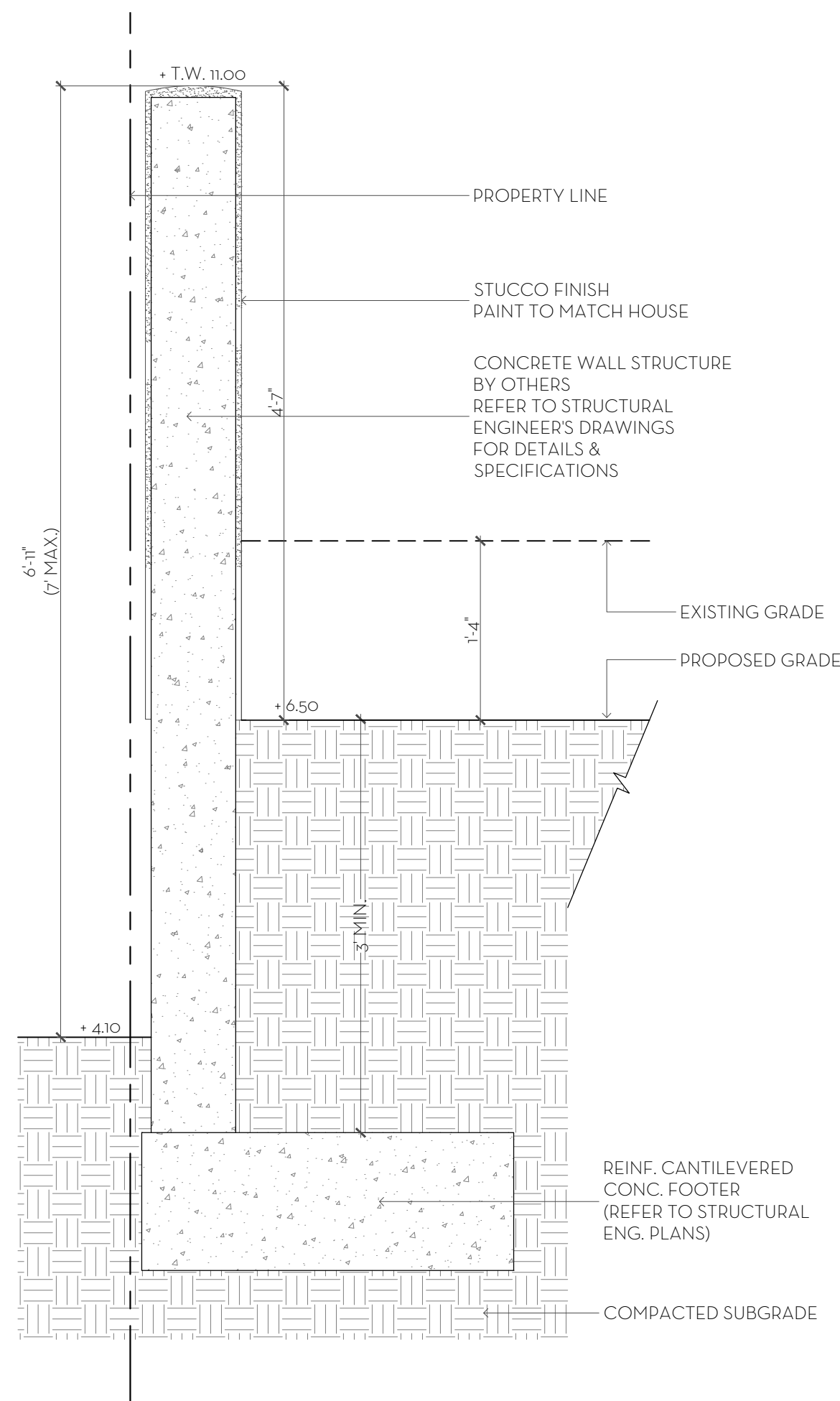
NIEVERAWILLIAMS.COM

LP2

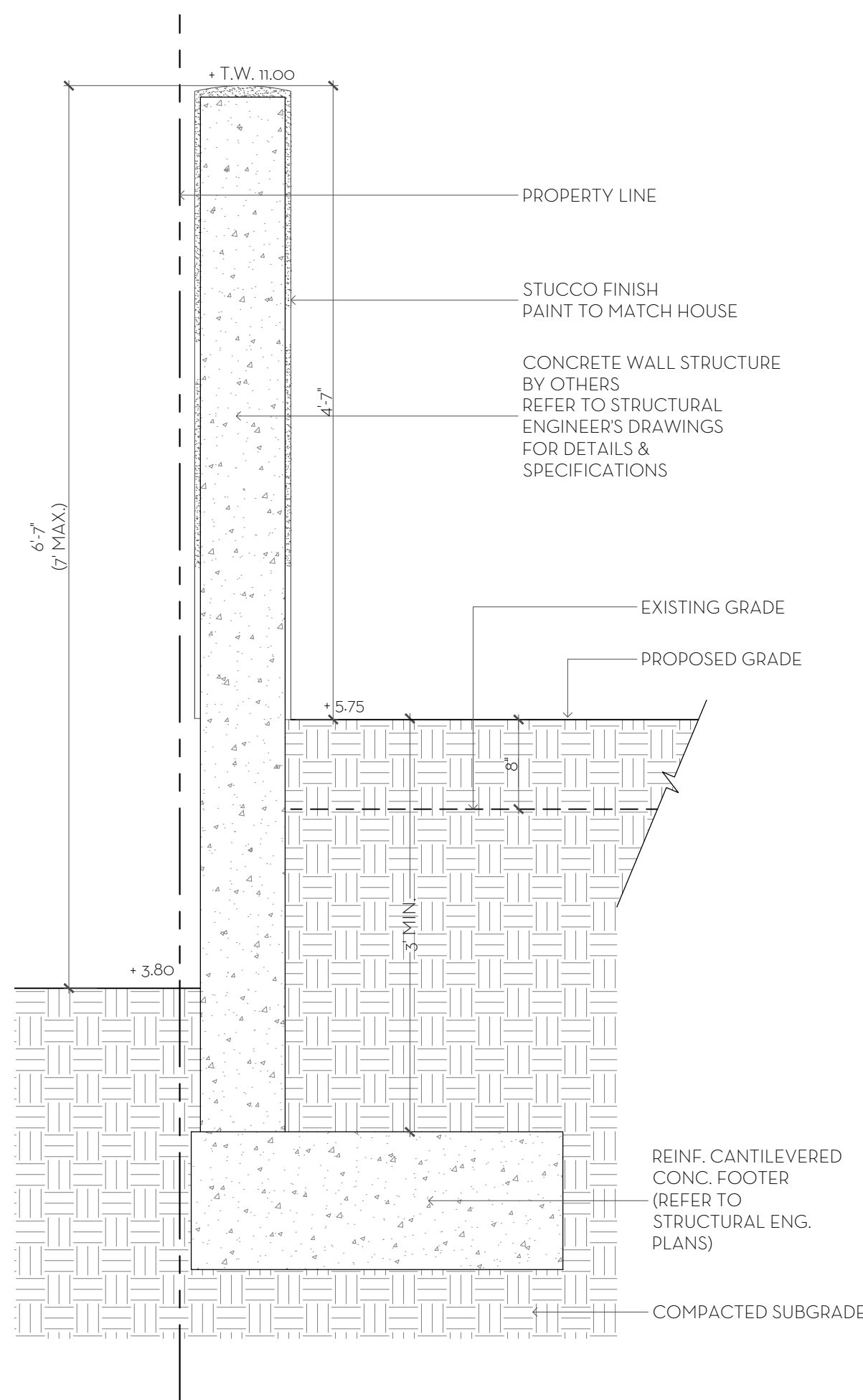
ARC-24-0085
ZON-24-0044



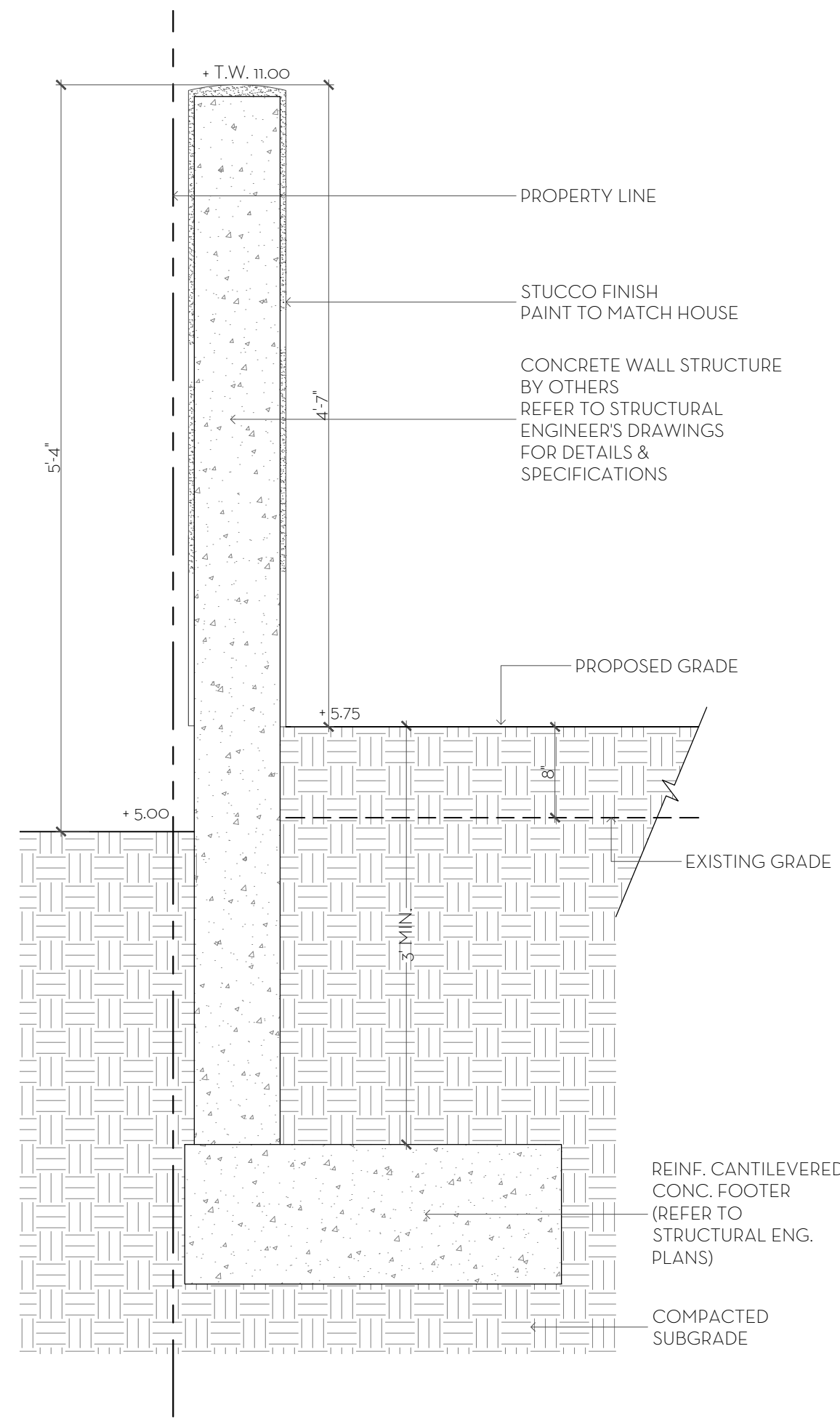
1 TYPICAL SITE WALL DETAIL
D1 SCALE: 1" = 1'-0"



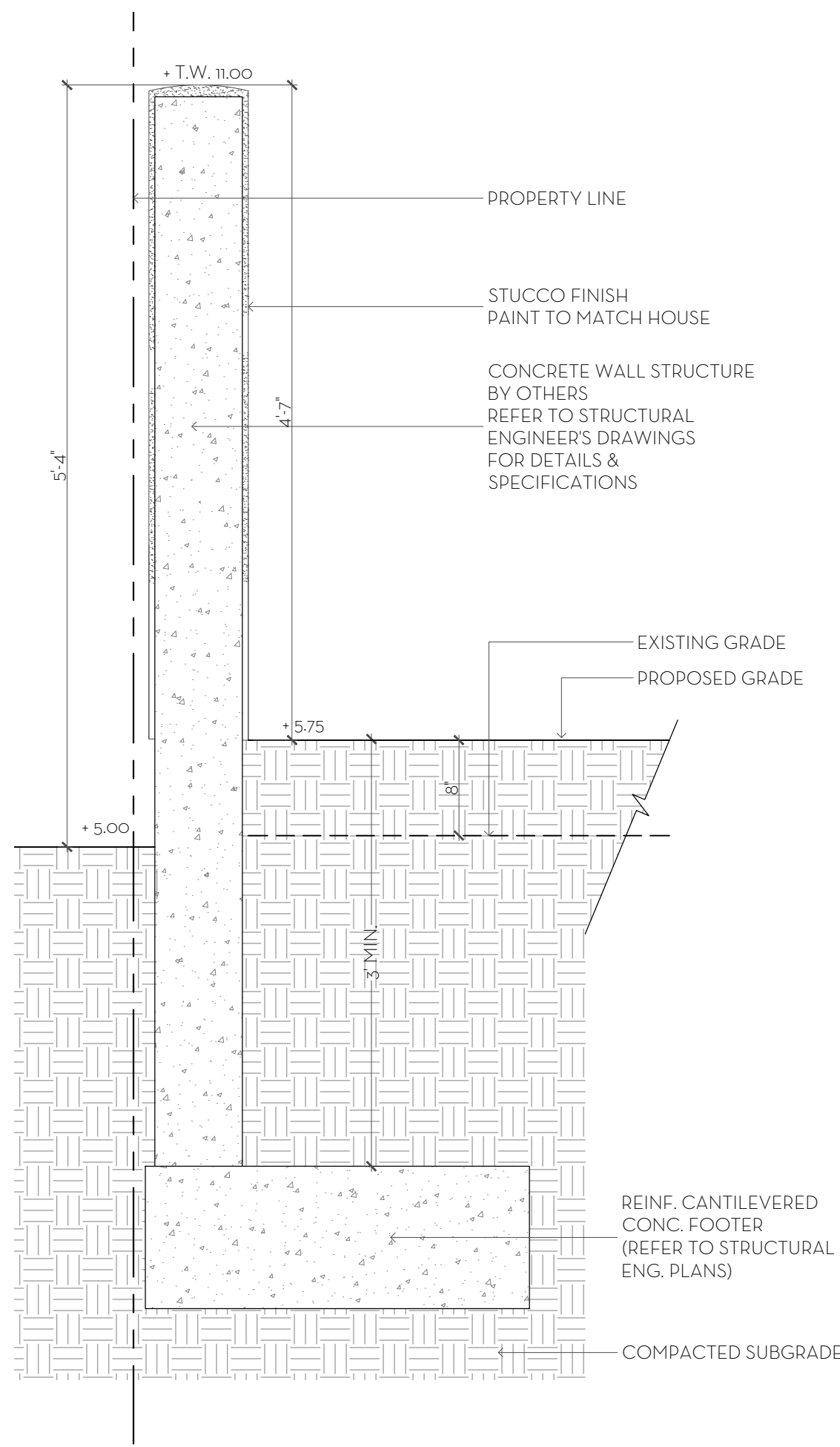
2 TYPICAL SITE WALL DETAIL
D1 SCALE: 1" = 1'-0"



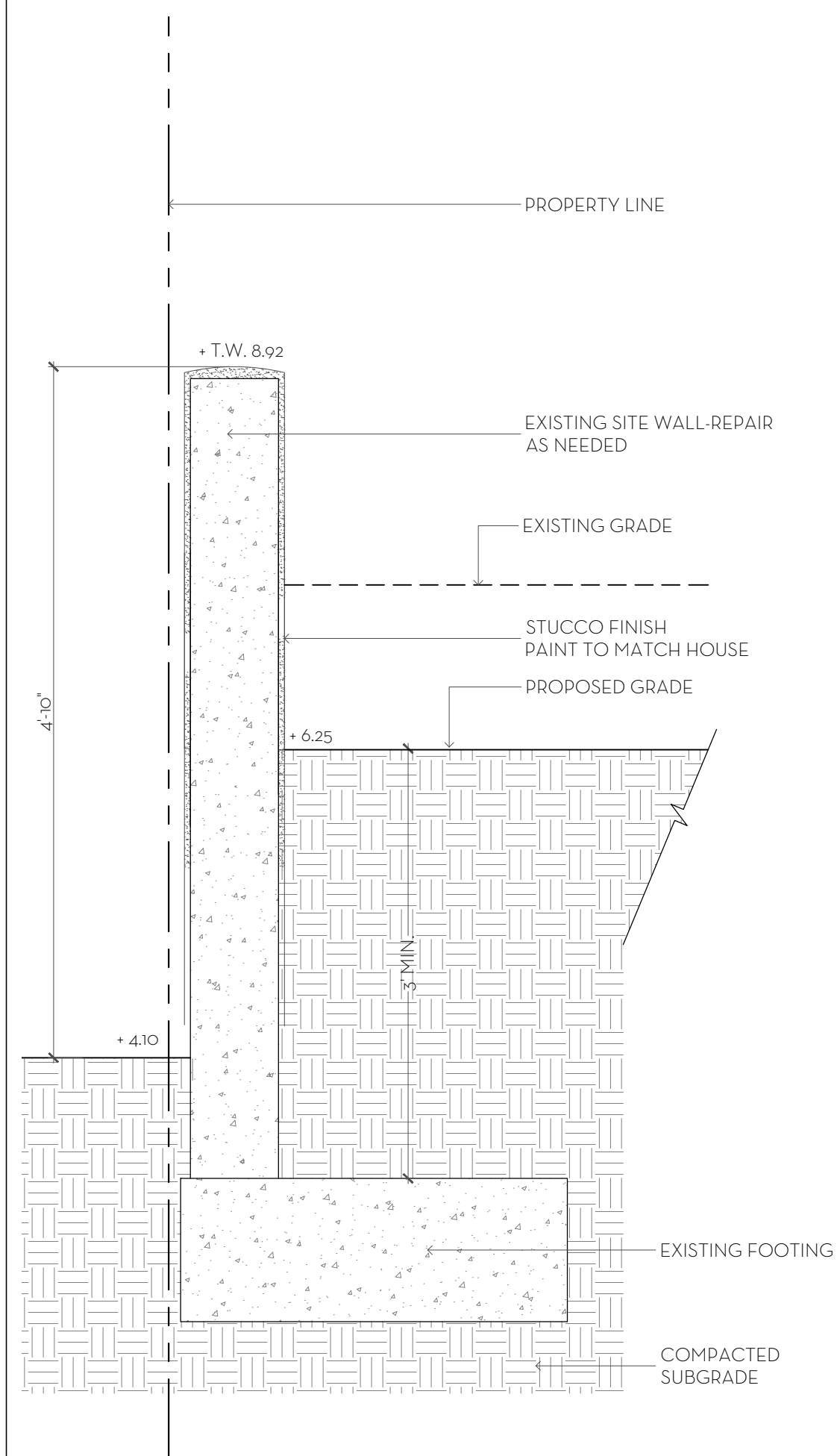
3 TYPICAL SITE WALL DETAIL
D1 SCALE: 1" = 1'-0"



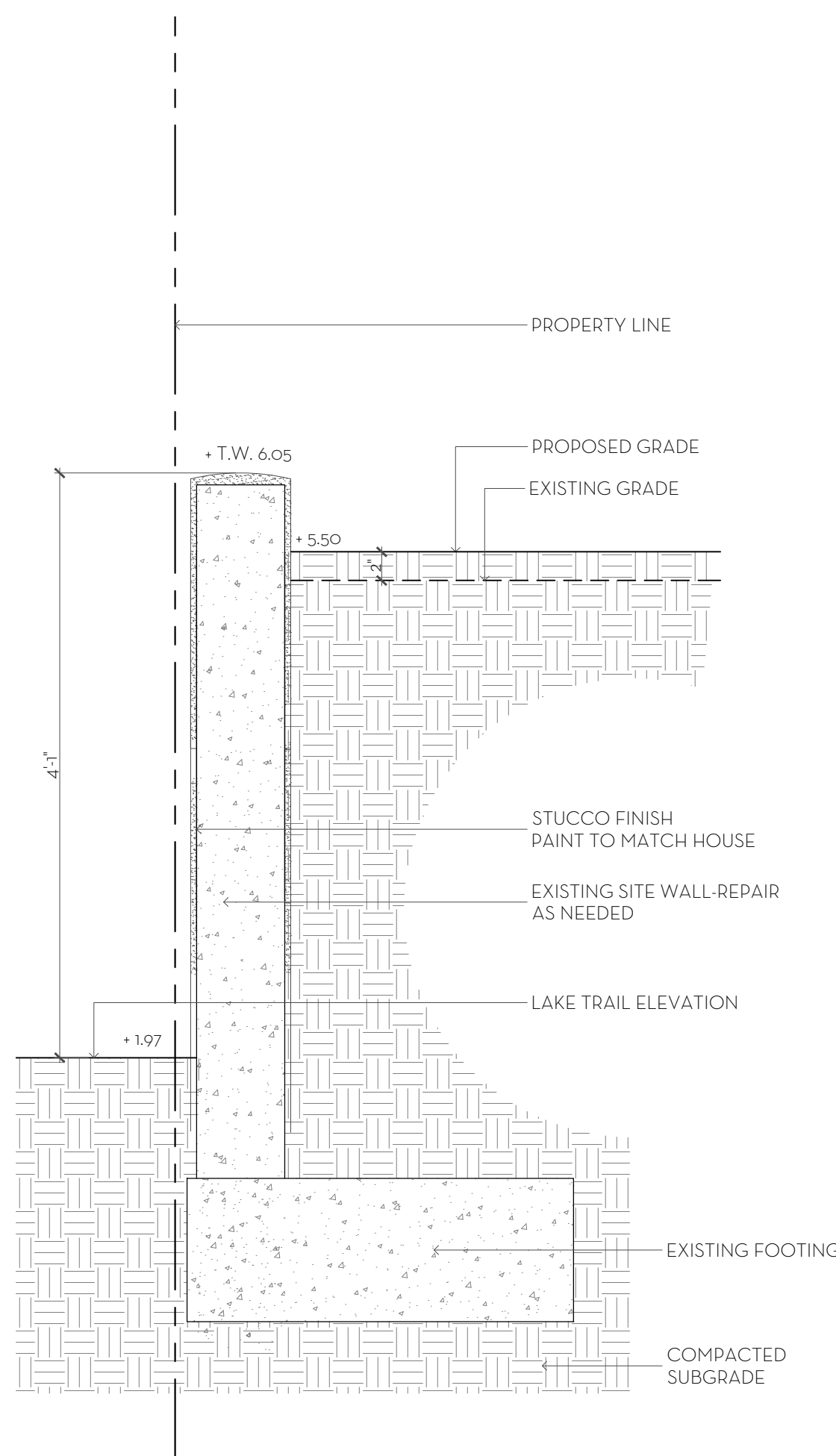
4 TYPICAL SITE WALL DETAIL
D1 SCALE: 1" = 1'-0"



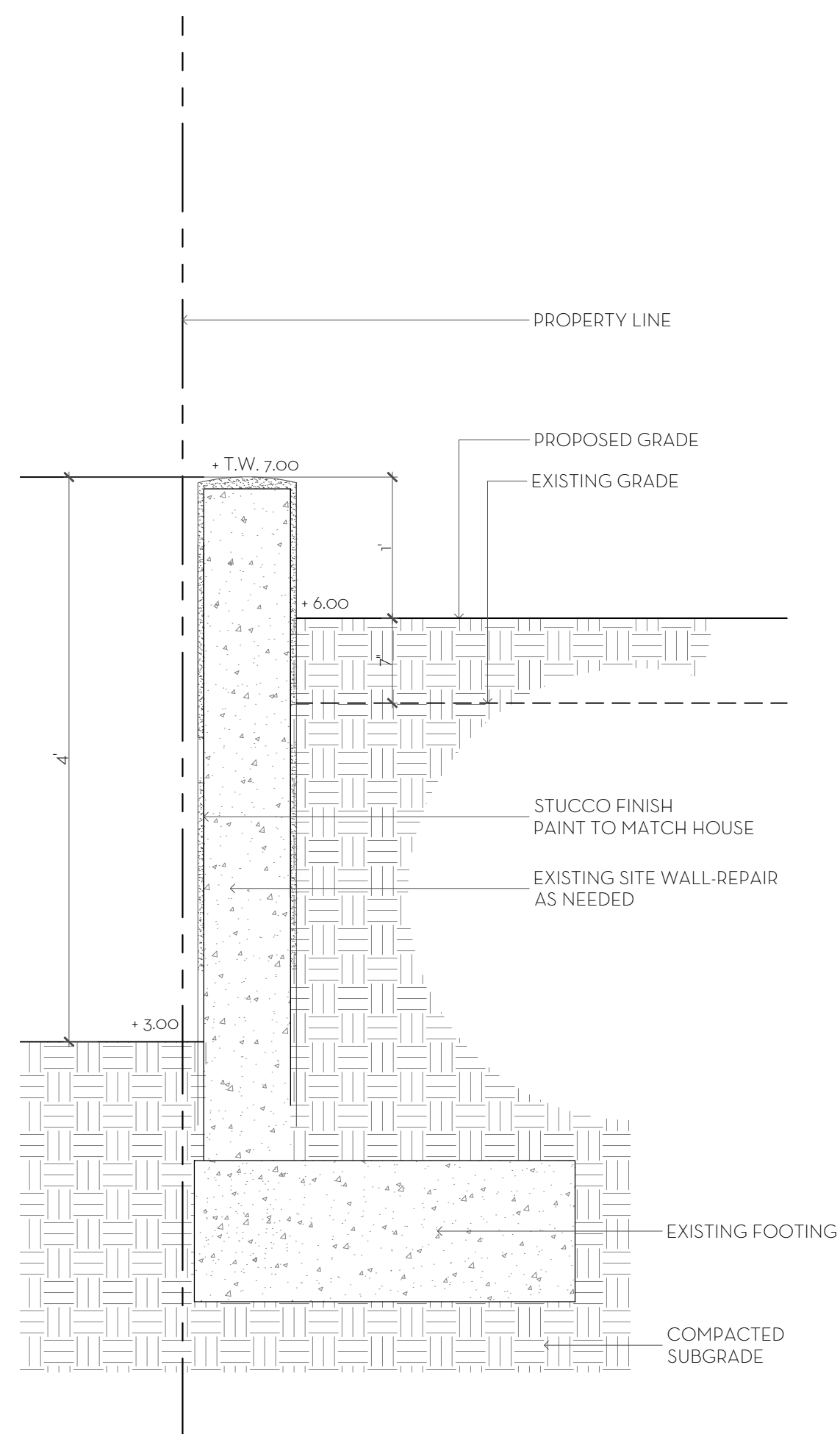
5 TYPICAL SITE WALL DETAIL
D1 SCALE: 1" = 1'-0"



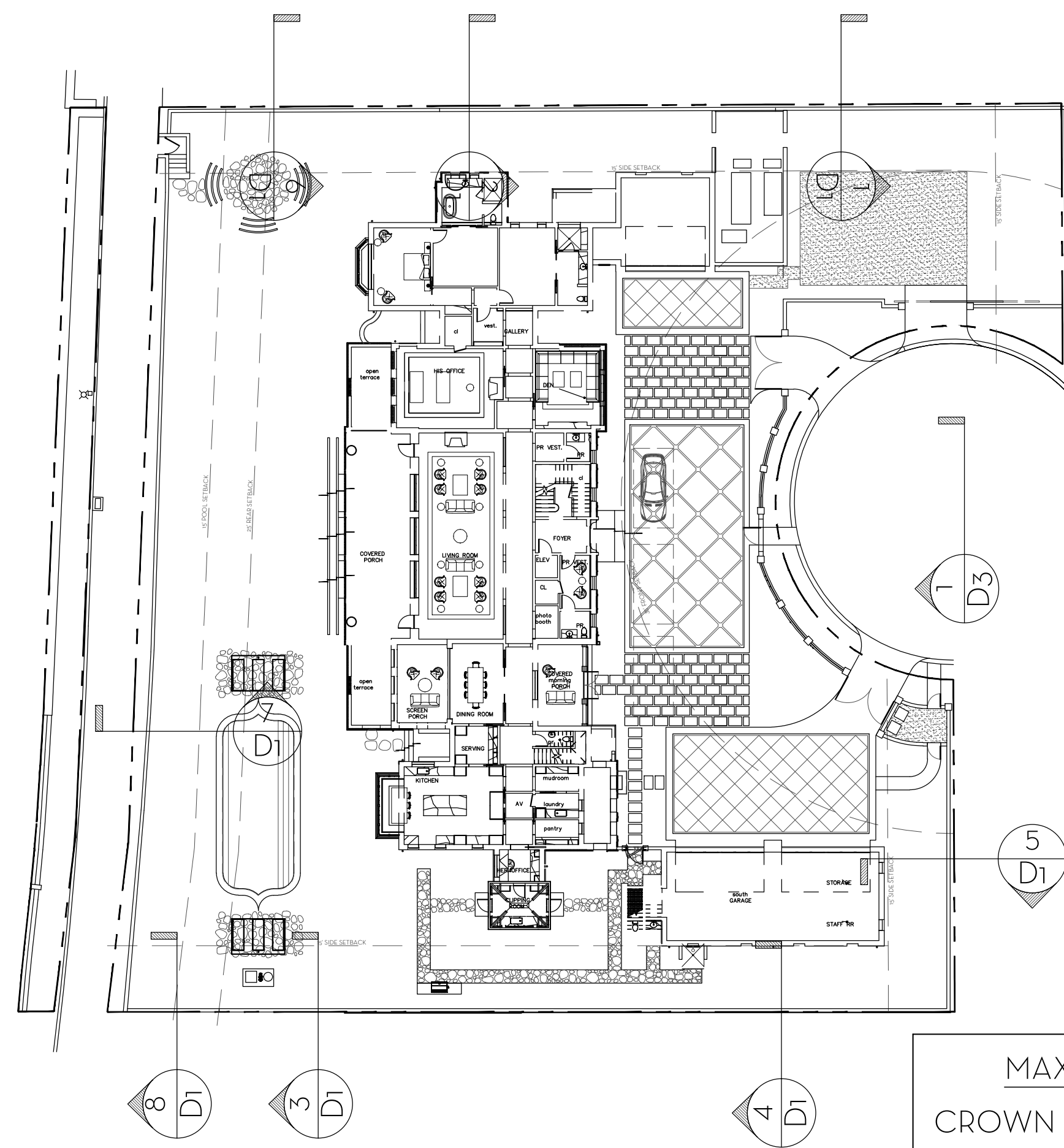
6 EXISTING SITE WALL
D1 SCALE: 1" = 1'-0"



7 EXISTING SITE WALL
D1 SCALE: 1" = 1'-0"



8 TYPICAL SITE WALL DETAIL
D1 SCALE: 1" = 1'-0"



9 SECTION KEY PLAN
D1 SCALE: N.T.S.

MAXIMUM FILL
CROWN OF ROAD: 6.18'
F.F.E.: 8.00'
MAX. ALLOWED FILL: .91' (11")

MARIO F. NIEVERA

State of Florida
Landscape Architect
Registration No.
6666856

WALL DETAILS
315 CHAPEL HILL RD.

PALM BEACH, FLORIDA

07 OCTOBER 2024
23 SEPTEMBER 2024 - SECOND SUBMITTAL
05 SEPTEMBER 2024-FIRST SUBMITTAL

SCALE: 3/32" = 1'-0"



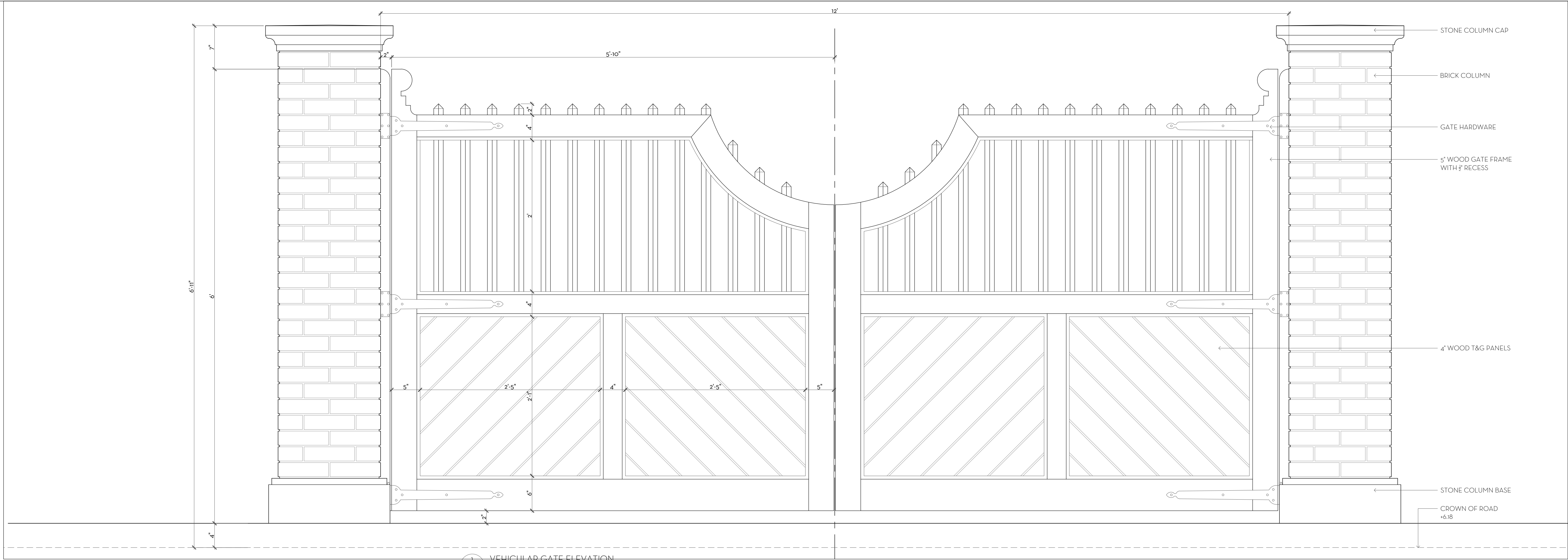
NIEVERA WILLIAMS
DESIGN

625 N. Flagler Drive
Suite 502
West Palm Beach, FL 33401
P: 561-659-2820
F: 561-659-2113

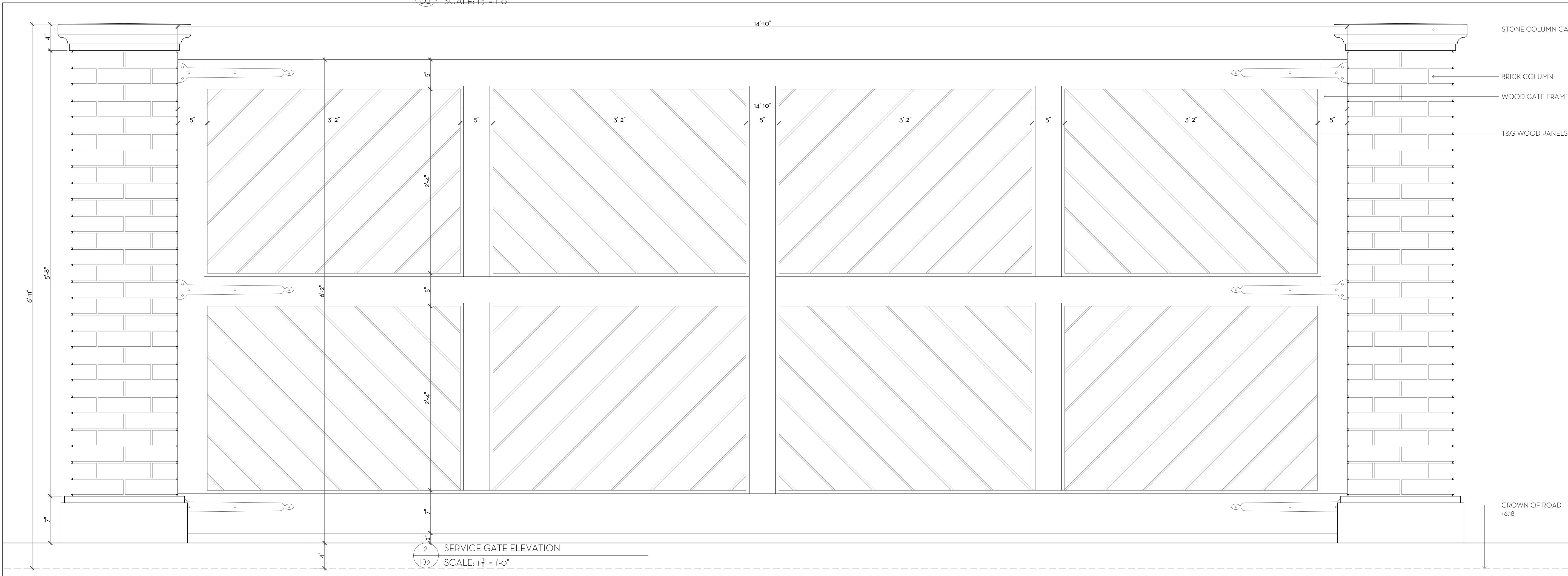
NIEVERAWILLIAMS.COM

D1

ARC-24-0085
ZON-24-0044



1 VEHICULAR GATE ELEVATION
D2 SCALE: 1 1/2" = 1'-0"



2 SERVICE GATE ELEVATION
D2 SCALE: 1 1/2" = 1'-0"

MARIO F. NIEVERA

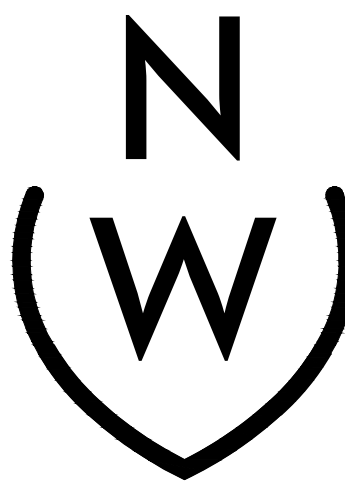
State of Florida
Landscape Architect
Registration No.
6666856

GATE ELEVATIONS
315 CHAPEL HILL RD.

PALM BEACH, FLORIDA

07 OCTOBER 2024
23 SEPTEMBER 2024 - SECOND SUBMITTAL
05 SEPTEMBER 2024-FIRST SUBMITTAL

SCALE: 3/32" = 1'-0"



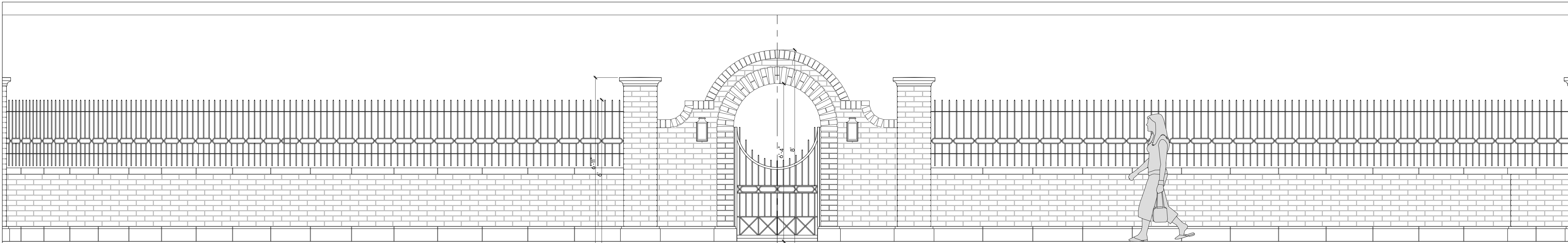
NIEVERA WILLIAMS
DESIGN

625 N. Flagler Drive
Suite 502
West Palm Beach, FL 33401
P: 561-659-2820
F: 561-659-2113

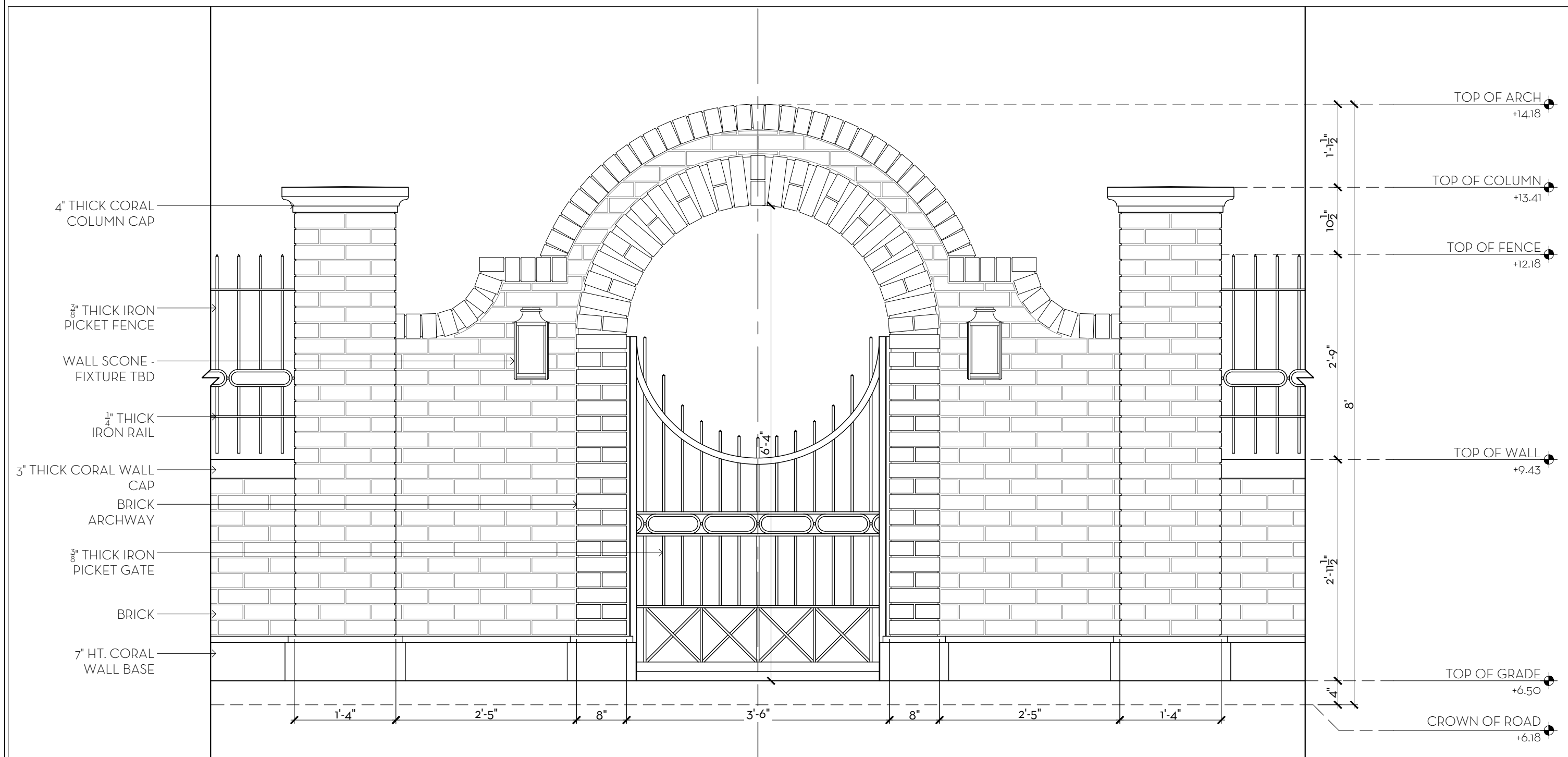
NIEVERAWILLIAMS.COM

D2

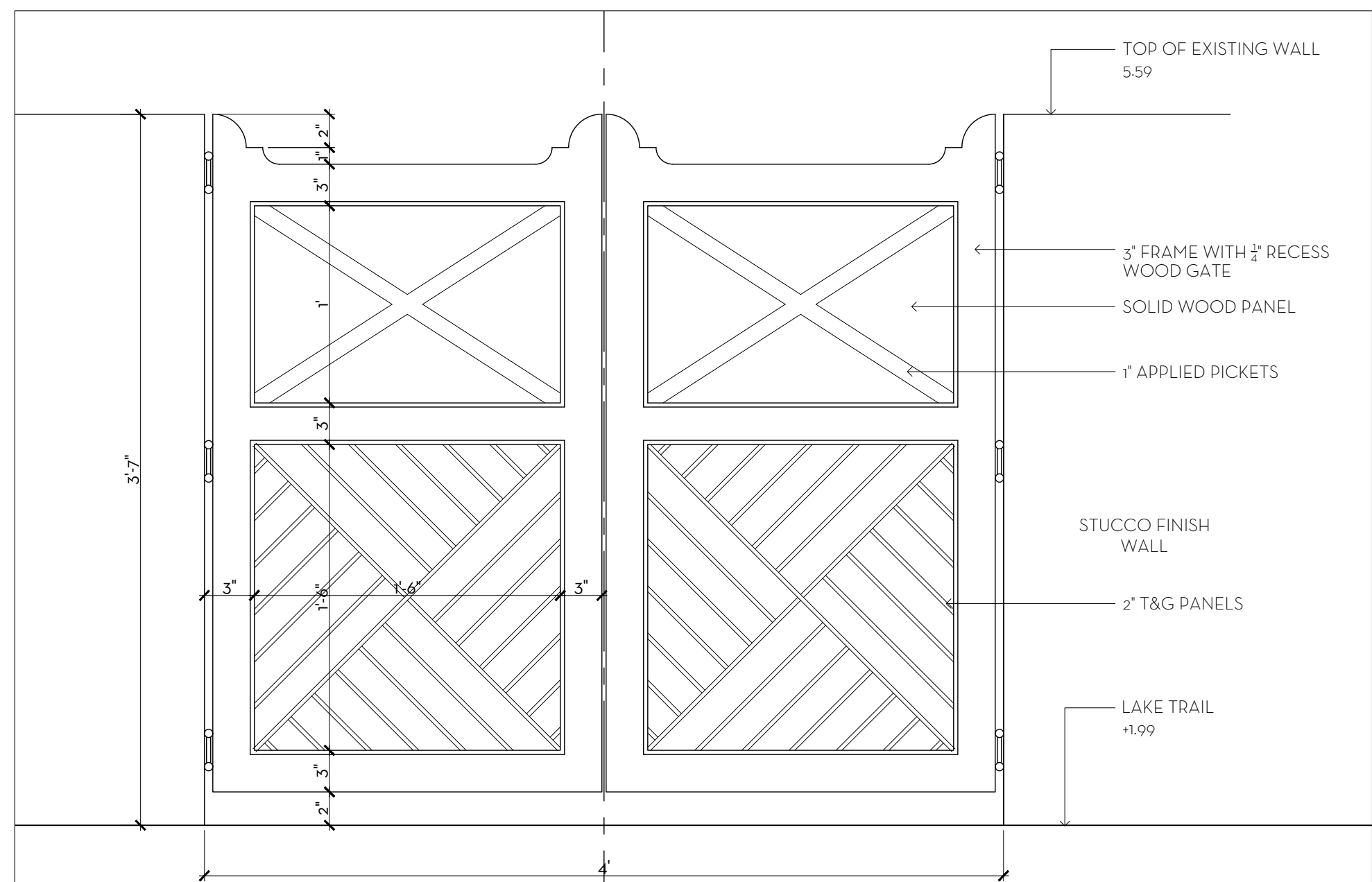
ARC-24-0085
ZON-24-0044



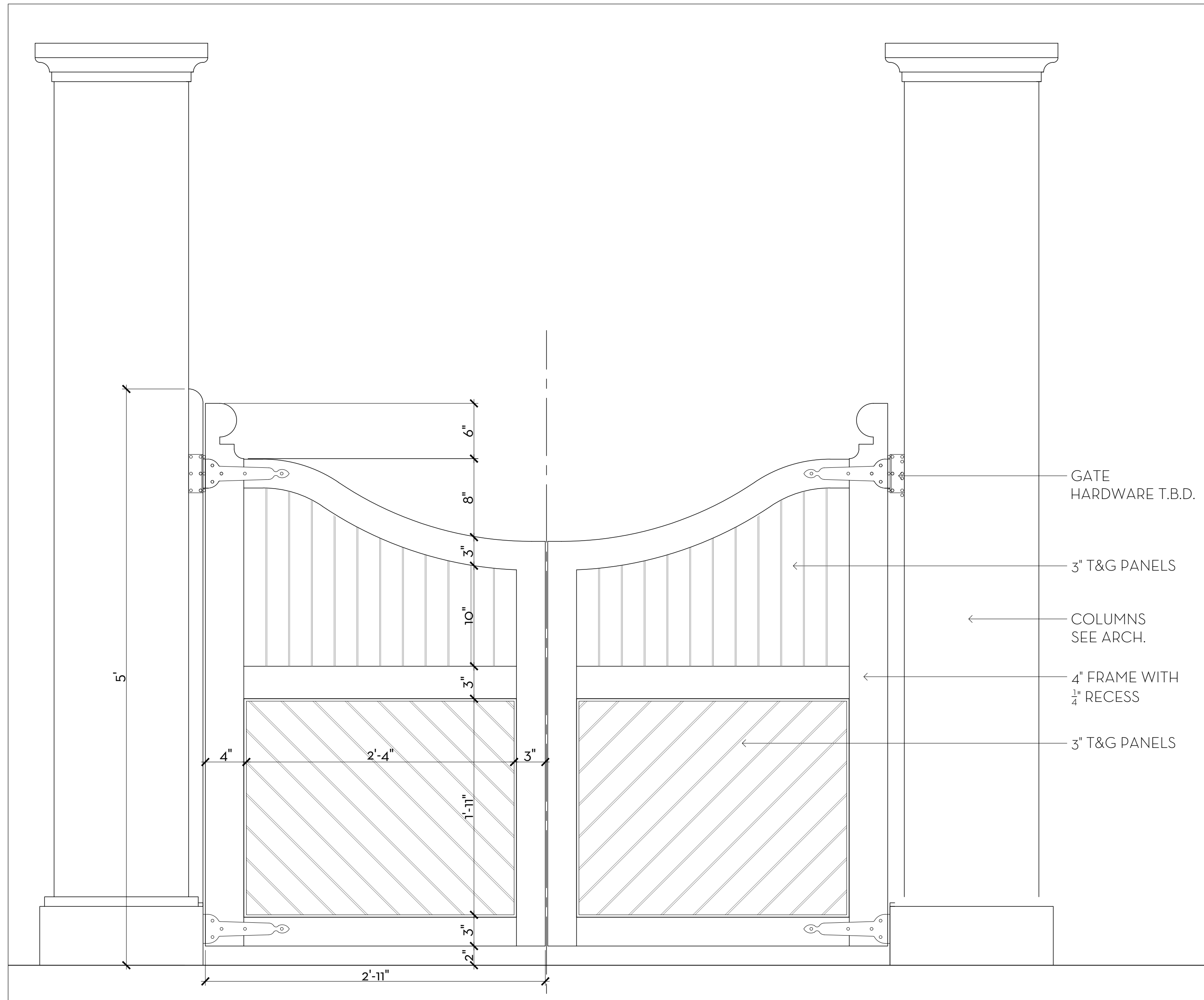
1 FRONT ENTRY SITE WALL DETAIL
SCALE: $\frac{3}{4}" = 1'-0"$



2 FRONT PEDESTRIAN GATE DETAIL
SCALE: $\frac{3}{4}" = 1'-0"$



3 LAKE TRAIL PEDESTRIAN GATE DETAIL
SCALE: $1\frac{1}{2}" = 1'-0"$



4 PORCH PEDESTRIAN GATE DETAIL
SCALE: $1\frac{1}{2}" = 1'-0"$

MARIO F. NIEVERA

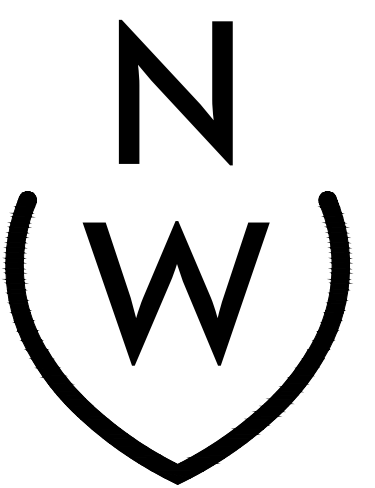
State of Florida
Landscape Architect
Registration No.
6666856

GATE ELEVATIONS
315 CHAPEL HILL RD.

PALM BEACH, FLORIDA

07 OCTOBER 2024
23 SEPTEMBER 2024 - SECOND SUBMITTAL
05 SEPTEMBER 2024-FIRST SUBMITTAL

SCALE: AS NOTED



NIEVERA WILLIAMS
DESIGN

625 N. Flagler Drive
Suite 502
West Palm Beach, FL 33401
P: 561-659-2820
F: 561-659-2113

NIEVERAWILLIAMS.COM

D3

ARC-24-0085
ZON-24-0044

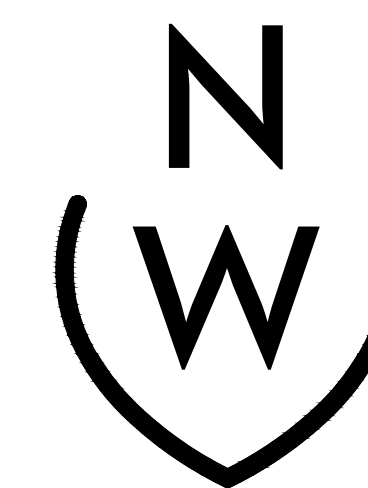
State of Florida
Landscape Architect
Registration No.
6666856

SCALE: 3/32" = 1'-0"

CONSTRUCTION SCREENING PLAN
315 CHAPEL HILL RD.

DAIM BEACH EI

08 AUGUST 2024



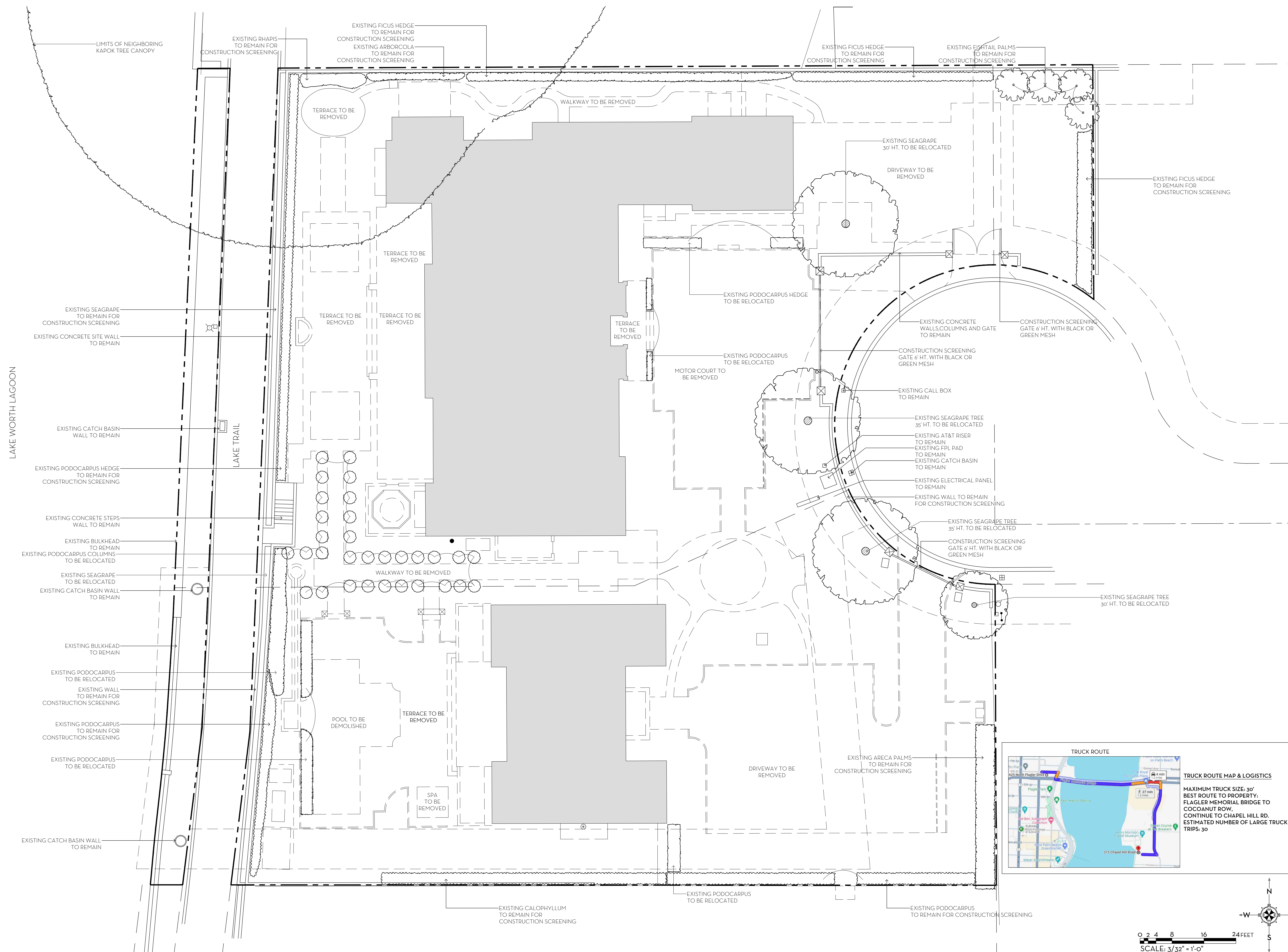
NIEVERA WILLIAMS
DESIGN

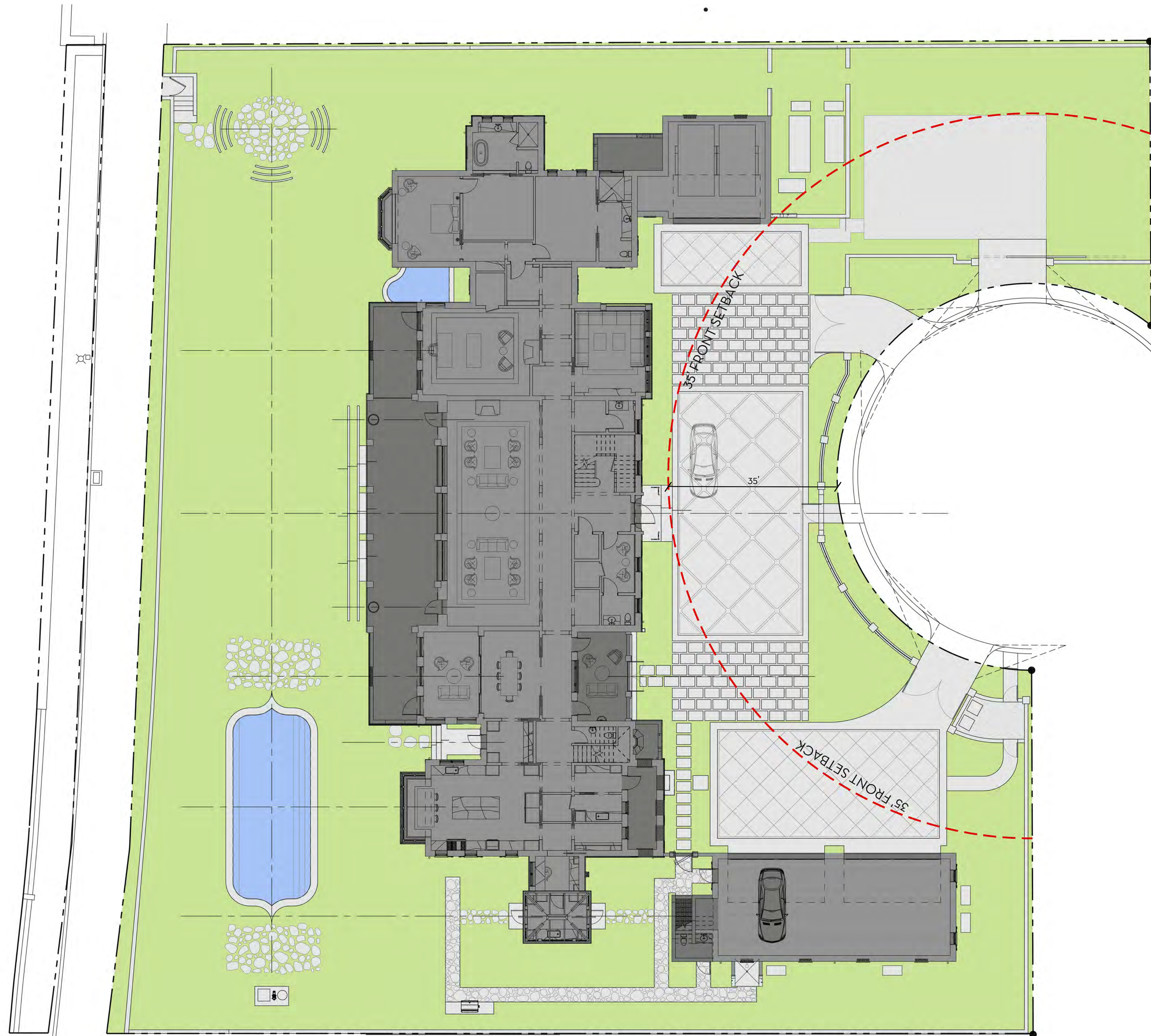
625 N. Flagler Drive
Suite 502
West Palm Beach, FL 33401
P: 561-659-2820
F: 561-659-2113

NIEVERAWILLIAMS.COM

CSP

ARC-24-0085
ZON-24-0044





OVERALL R-A SITE CALCULATIONS:

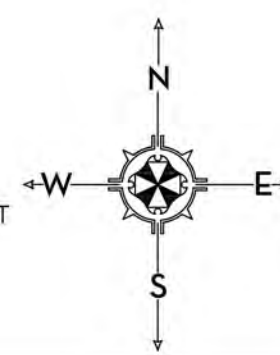
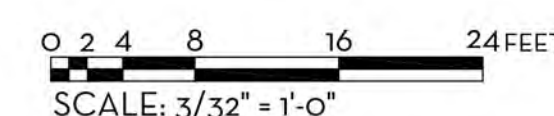
| | | | |
|--------------------|--------|-------|-------|
| SITE AREA = | 36,534 | SQ FT | 100% |
| MINIMUM LANDSCAPE: | | | |
| REQUIRED = | 18,267 | SQ FT | 50% |
| PROPOSED = | 19,425 | SQ FT | 54.2% |

FRONT SETBACK SITE CALCULATIONS:

| | | | |
|--------------------|-------|-------|------|
| 35' SETBACK AREA = | 7,232 | SQ FT | 100% |
| MINIMUM LANDSCAPE: | | | |
| REQUIRED = | 3,254 | SQ FT | 45% |
| PROPOSED = | 3,256 | SQ FT | 45% |

OPEN SPACE LEGEND

- LANDSCAPE
- HARDSCAPE
- WATER FEATURE
- BUILDING



MARIO F. NIEVERA
State of Florida
Landscape Architect
Registration No.
6666856

OPEN SPACE DIAGRAM
315 CHAPEL HILL RD.

PALM BEACH, FLORIDA
07 OCTOBER 2024
23 SEPTEMBER 2024 - SECOND SUBMITTAL
05 SEPTEMBER 2024 - FIRST SUBMITTAL
SCALE: 3/32" = 1'-0"



NIEVERA WILLIAMS
DESIGN

625 N. Flagler Drive
Suite 502
West Palm Beach, FL 33401
P: 561-659-2820
F: 561-659-2113

NIEVERAWILLIAMS.COM

OS1
ARC-24-0085
ZON-24-0044