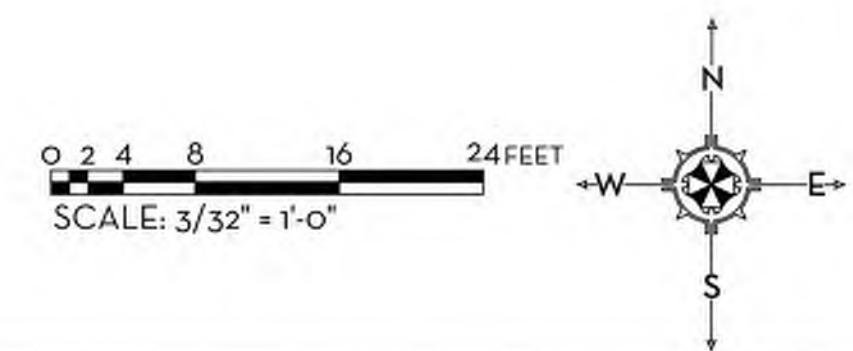


RECEIVED
By yfigueroa at 3:18 pm, Jun 10, 2024



MARIO F. NIEVERA
State of Florida
Landscape Architect
Registration No.
6666856

OVERALL SITE PLAN
1330 N. OCEAN BLVD.
PALM BEACH, FLORIDA

SCALE: 3/32" = 1'-0"



625 N. Flagler Drive
Suite 502
West Palm Beach, FL 33401
P: 561-659-2820
F: 561-659-2113

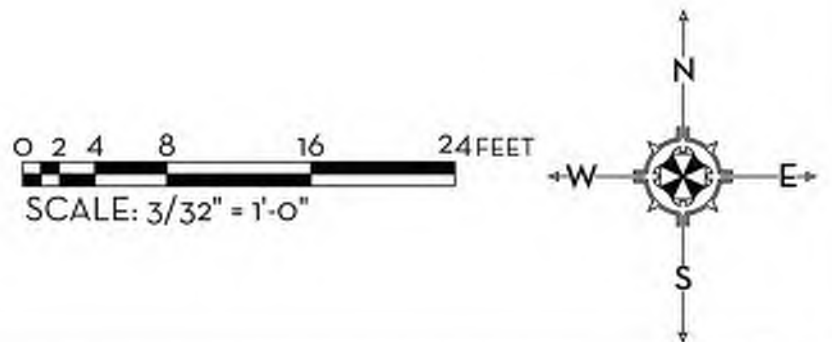
NIEVERAWILLIAMS.COM

Lo
ARC-24-051

07 JUNE 2024
22 MAY 2024



LEGEND	
	EXISTING SPOT ELEVATION (NAVD)
	PROPOSED SPOT ELEVATION (NAVD)



PREVIOUSLY PRESENTED SITE PLAN RENDERING

MARIO F. NIEVERA

State of Florida
Landscape Architect
Registration No.
6666856

OVERALL SITE PLAN
1330 N. OCEAN BLVD.

PALM BEACH, FLORIDA

14 MARCH 2024

SCALE: 3/32" = 1'-0"



NIEVERA WILLIAMS
DESIGN

625 N. Flagler Drive
Suite 502
West Palm Beach, FL 33401
P: 561-659-2820
F: 561-659-2113

NIEVERAWILLIAMS.COM

Lo

ARC-24-051



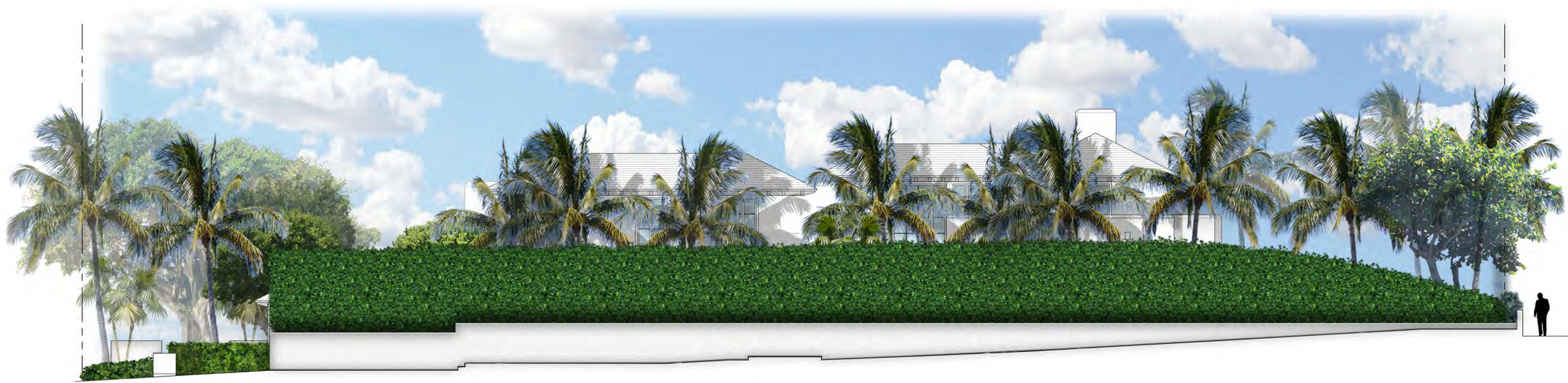












1 SOUTH EXTERIOR PROPERTY LINE ELEVATION - PREVIOUSLY PROPOSED
SCALE: 1/8" = 1'-0"



2 SOUTH EXTERIOR PROPERTY LINE ELEVATION - PROPOSED
SCALE: 1/8" = 1'-0"

MARIO F. NIEVERA

State of Florida
Landscape Architect
Registration No.
6666856

SOUTH ELEVATION
1330 N. OCEAN BLVD.
PALM BEACH, FLORIDA

SCALE: 1/8" = 1'-0"

07 JUNE 2024
22 MAY 2024



NIEVERA WILLIAMS
DESIGN

625 N. Flagler Drive
Suite 502
West Palm Beach, FL 33401
P: 561-659-2820
F: 561-659-2113

NIEVERAWILLIAMS.COM

EL1

ARC-24-051

6/6/2024 10:30:30 AM



1 NORTH EXTERIOR PROPERTY LINE ELEVATION - PREVIOUSLY PROPOSED
EL2 SCALE: 1/8" = 1'-0"



2 NORTH EXTERIOR PROPERTY LINE ELEVATION - PROPOSED
EL2 SCALE: 1/8" = 1'-0"

MARIO F. NIEVERA
State of Florida
Landscape Architect
Registration No.
6666856

NORTH ELEVATION
1330 N. OCEAN BLVD.
PALM BEACH, FLORIDA

SCALE: 1/8" = 1'-0"

07 JUNE 2024
22 MAY 2024



NIEVERA WILLIAMS
DESIGN

625 N. Flagler Drive
Suite 502
West Palm Beach, FL 33401
P: 561-659-2820
F: 561-659-2113

NIEVERAWILLIAMS.COM

EL2

ARC-24-051



1 EAST EXTERIOR PROPERTY LINE ELEVATION - PREVIOUSLY PROPOSED
EL3 SCALE: 1/8" = 1'-0"



2 EAST EXTERIOR PROPERTY LINE ELEVATION - PROPOSED
EL3 SCALE: 1/8" = 1'-0"

MARIO F. NIEVERA

State of Florida
Landscape Architect
Registration No.
6666856

EAST ELEVATION
1330 N. OCEAN BLVD.
PALM BEACH, FLORIDA

SCALE: 1/8" = 1'-0"

07 JUNE 2024
22 MAY 2024



NIEVERA WILLIAMS
DESIGN

625 N. Flagler Drive
Suite 502
West Palm Beach, FL 33401
P: 561-659-2820
F: 561-659-2113

NIEVERAWILLIAMS.COM

EL3

ARC-24-051



1 WEST EXTERIOR PROPERTY LINE ELEVATION - PREVIOUSLY PROPOSED
EL4 SCALE: 1/8" = 1'-0"



2 WEST EXTERIOR PROPERTY LINE ELEVATION - PROPOSED
EL4 SCALE: 1/8" = 1'-0"

MARIO F. NIEVERA

State of Florida
Landscape Architect
Registration No.
6666856

WEST ELEVATION
1330 N. OCEAN BLVD.
PALM BEACH, FLORIDA

SCALE: 1/8" = 1'-0"

07 JUNE 2024
22 MAY 2024



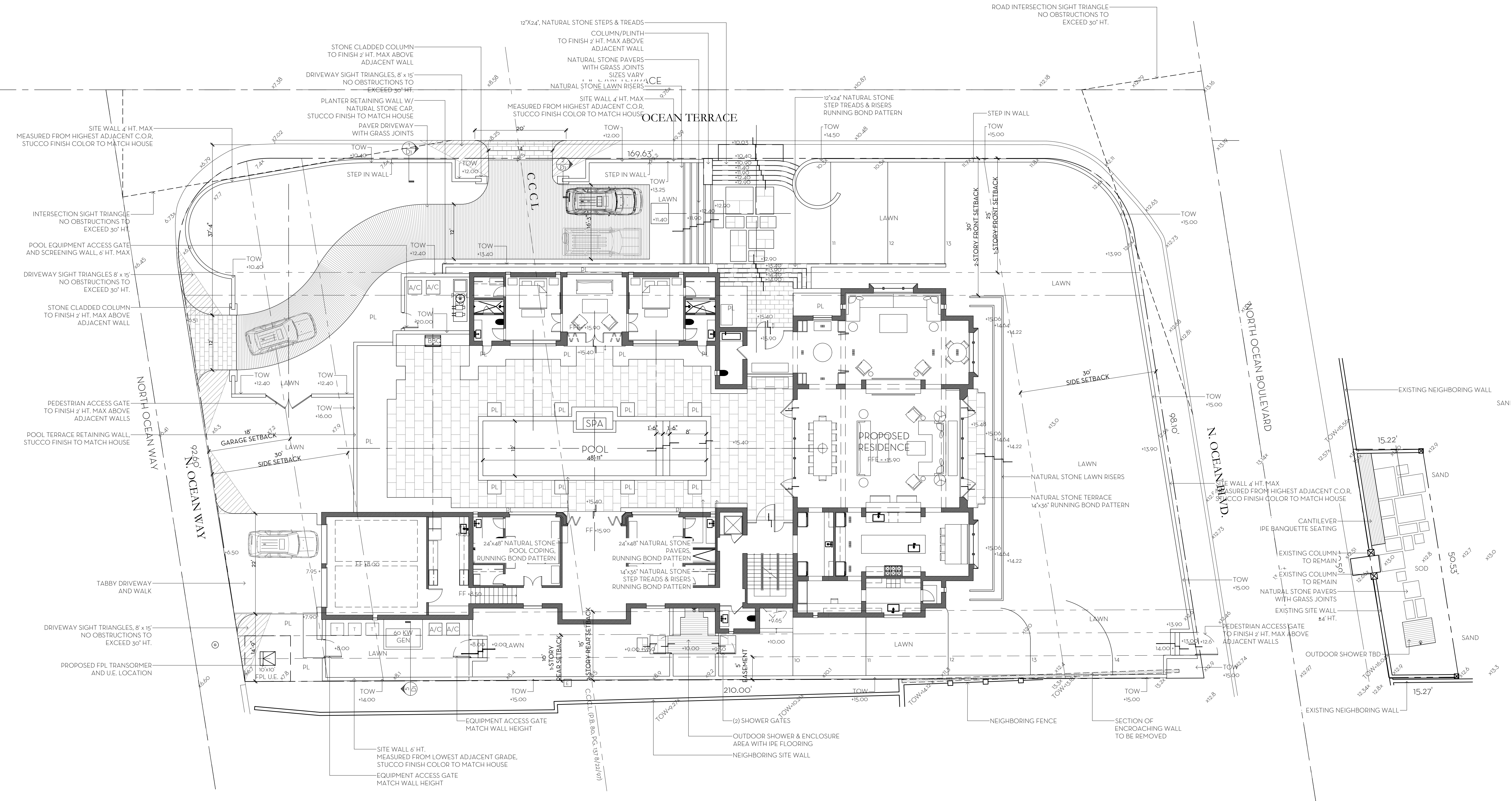
NIEVERA WILLIAMS
DESIGN

625 N. Flagler Drive
Suite 502
West Palm Beach, FL 33401
P: 561-659-2820
F: 561-659-2113

NIEVERAWILLIAMS.COM

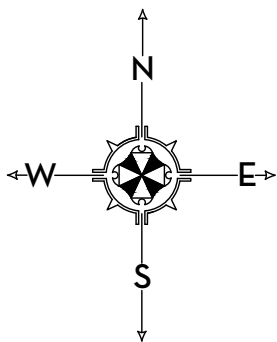
EL4

ARC-24-051



LEGEND	
+5.00	EXISTING SPOT ELEVATION (NAVD)
+5.00	PROPOSED SPOT ELEVATION (NAVD)

0 2 4 8 16 24 FEET
SCALE: 3/32" = 1'-0"



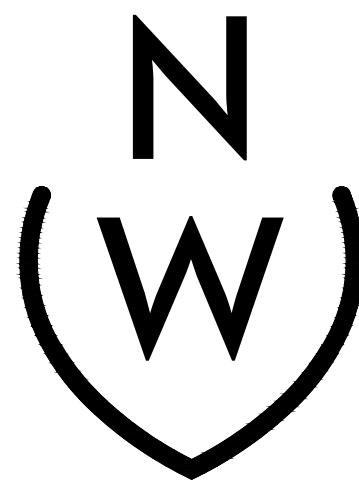
MARIO F. NIEVERA

State of Florida
Landscape Architect
Registration No.
6666856

HARDSCAPE PLAN
1330 N. OCEAN BLVD.
PALM BEACH, FLORIDA

SCALE: 3/32" = 1'-0"

07 JUNE 2024
22 MAY 2024



NIEVERA WILLIAMS
DESIGN

625 N. Flagler Drive
Suite 502
West Palm Beach, FL 33401
P: 561-659-2820
F: 561-659-2113

NIEVERAWILLIAMS.COM



ARC-24-051



NATURAL STONE MATERIAL



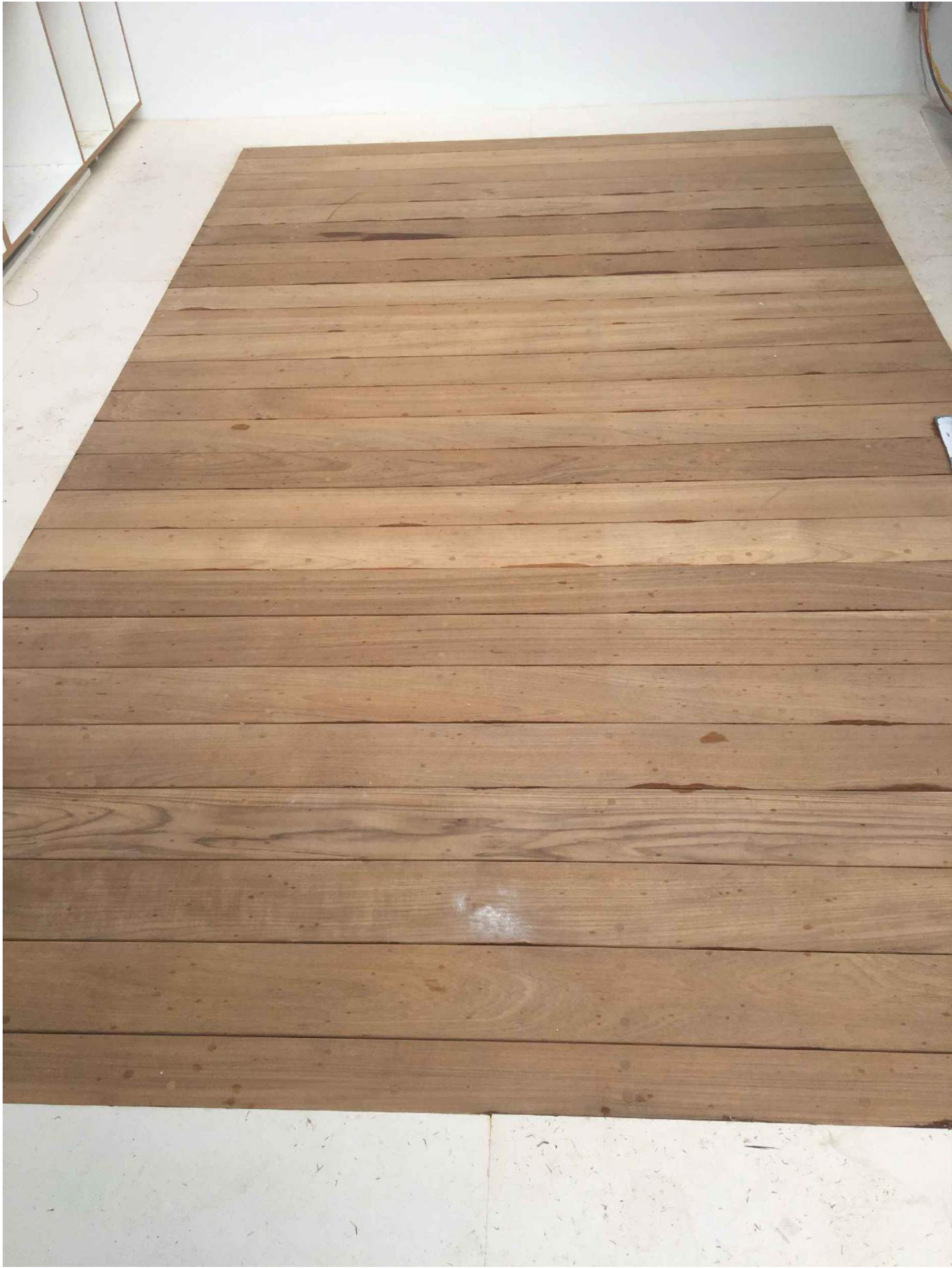
LAWN STEP CONCEPT



DRIVEWAY CONCEPT



TABBY CONCRETE



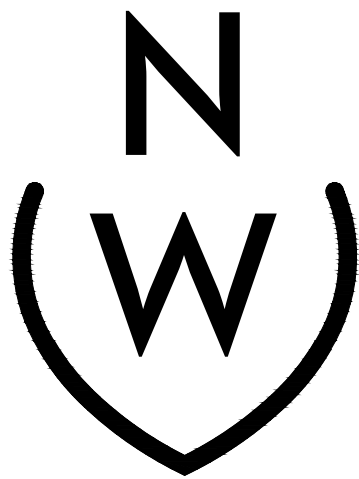
IPE DECK IN SHOWER

MARIO F. NIEVERA

State of Florida
Landscape Architect
Registration No.
6666856

LANDSCAPE MATERIALS
1330 N. OCEAN BLVD.
PALM BEACH, FLORIDA

07 JUNE 2024
22 MAY 2024



NIEVERA WILLIAMS
DESIGN

625 N. Flagler Drive
Suite 502
West Palm Beach, FL 33401
P: 561-659-2820
F: 561-659-2113

NIEVERAWILLIAMS.COM

L2

ARC-24-051

State of Florida
Landscape Architect
Registration No.
6666856

DAIM BEACH EL QUIDA

SCALE: $3/32'' = 1'-0''$

07 JUNE 2024



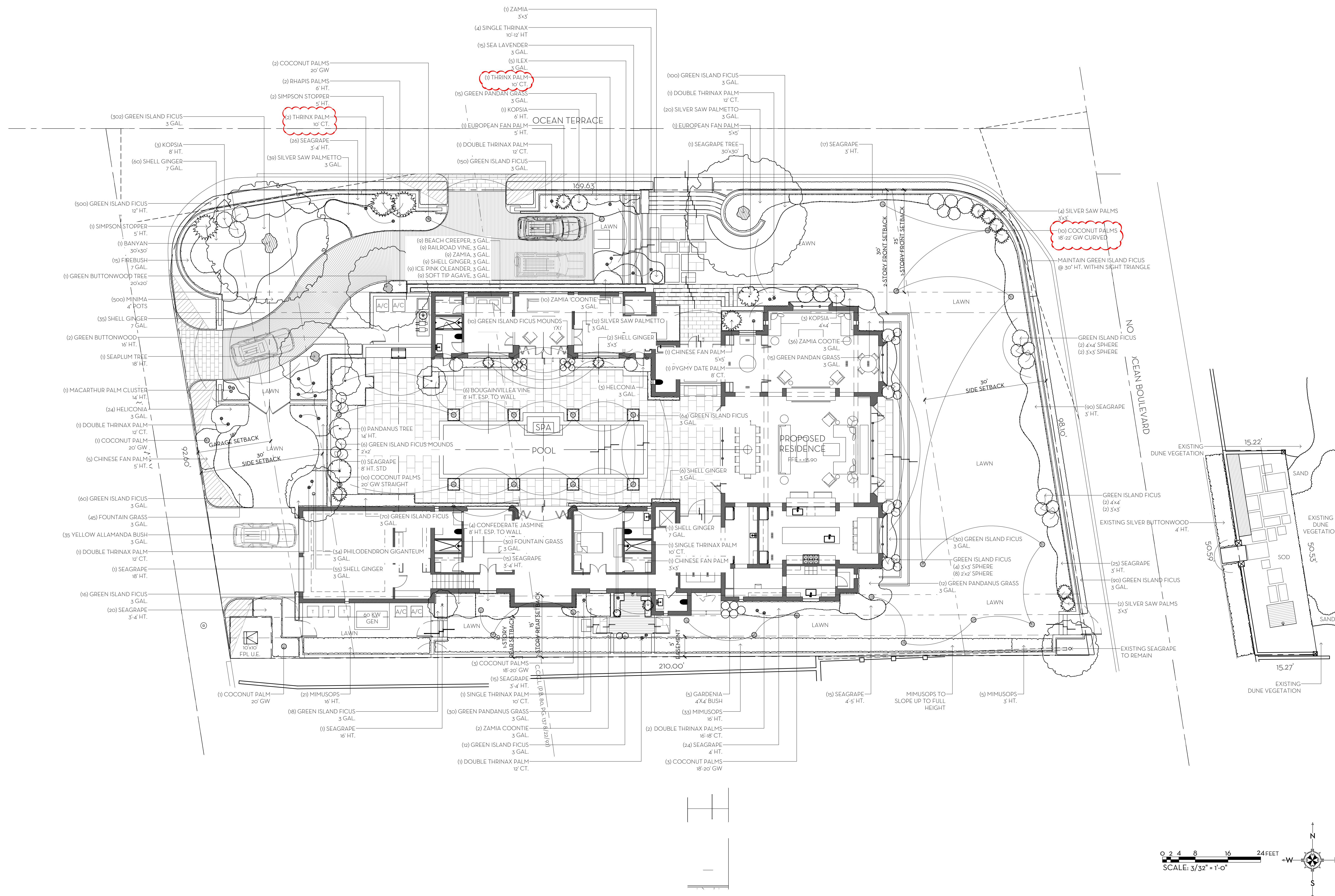
NIEVERA WILLIAMS
DESIGN

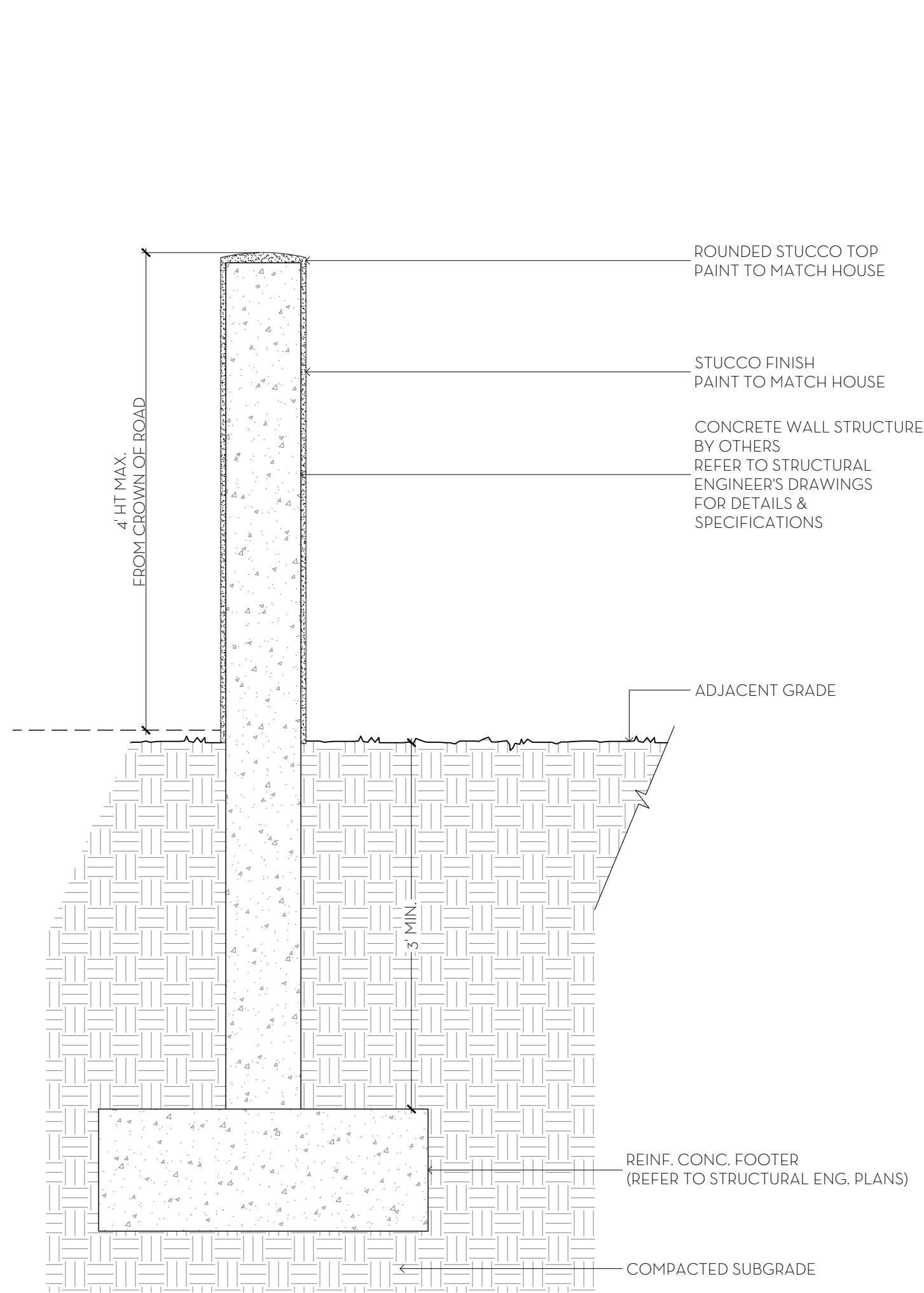
625 N. Flagler Drive
Suite 502
West Palm Beach, FL 33401
P: 561-659-2820
F: 561-659-2113

NIEVERAWILLIAMS.COM

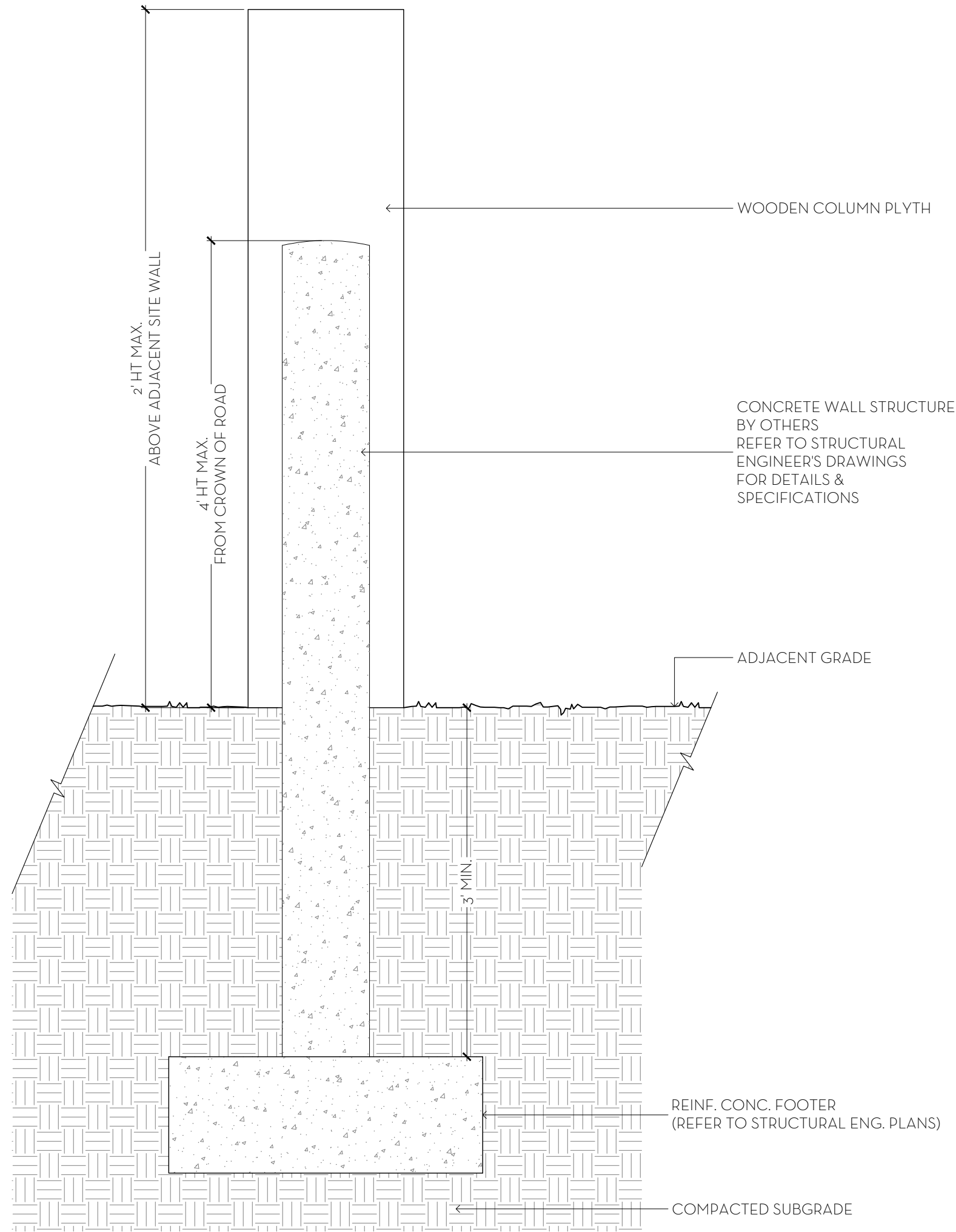
LP1

ARC-24-051

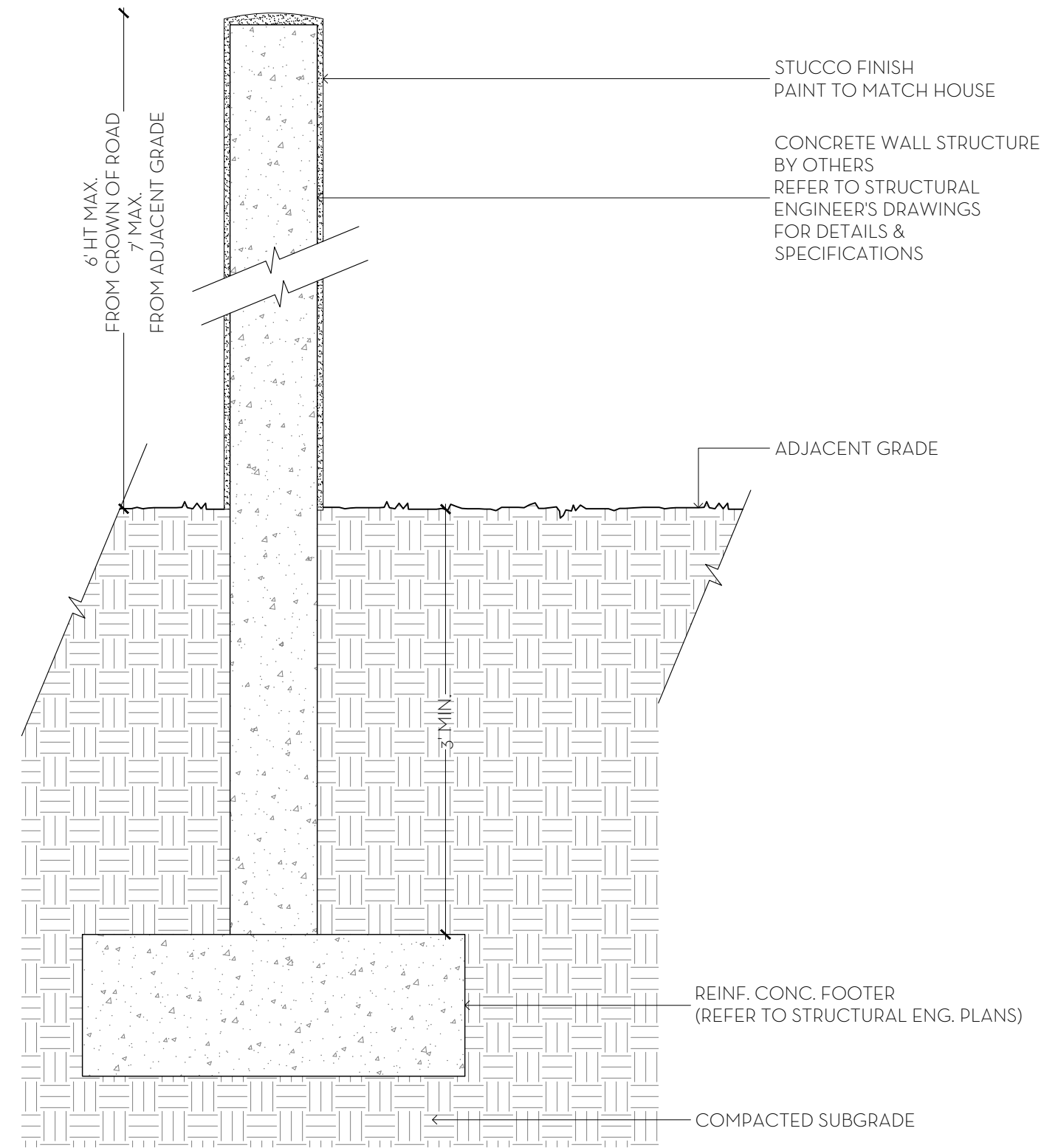




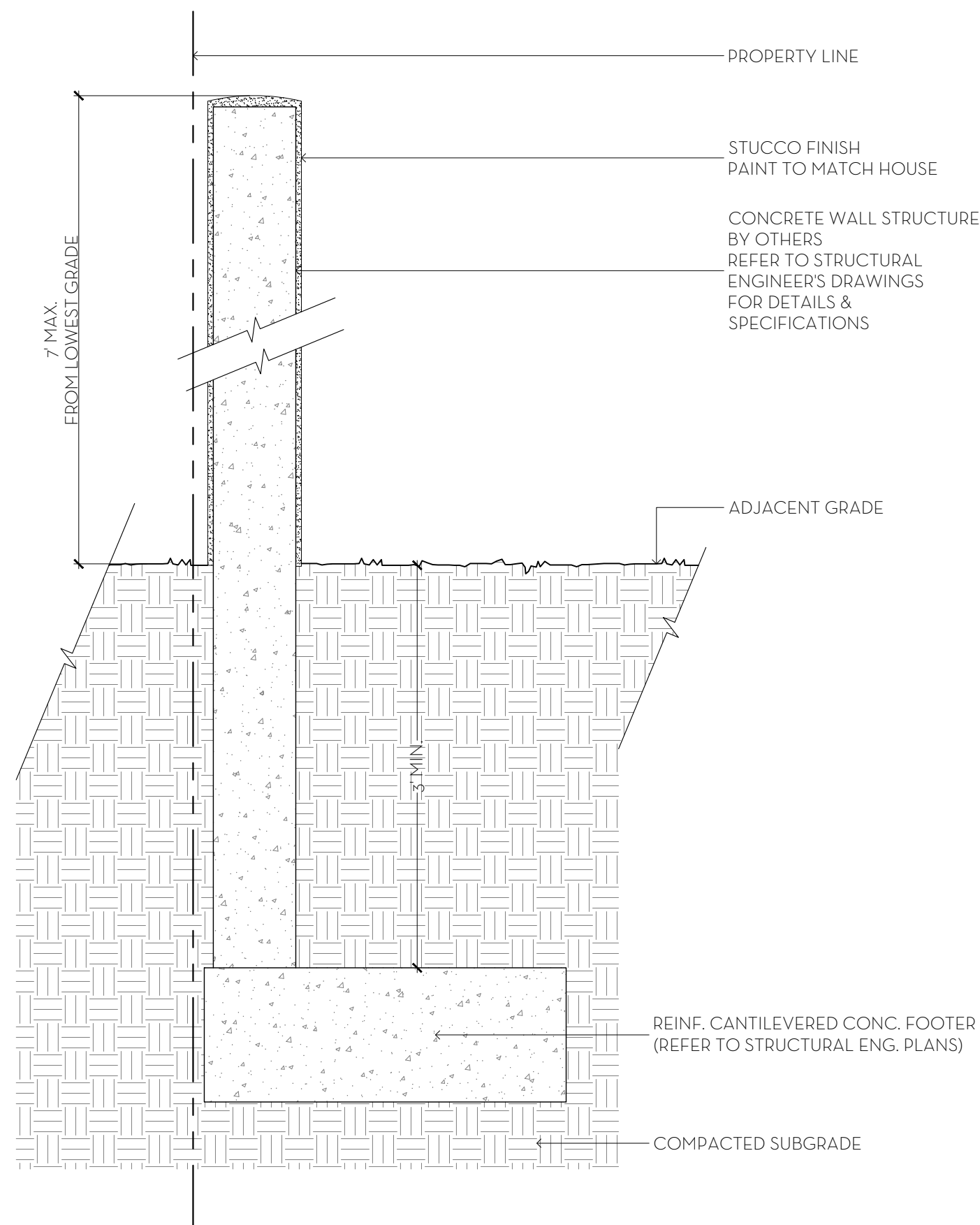
1 STREET FACING SITE WALL DETAIL (TYP.)
D1 SCALE: 1" = 1'-0"



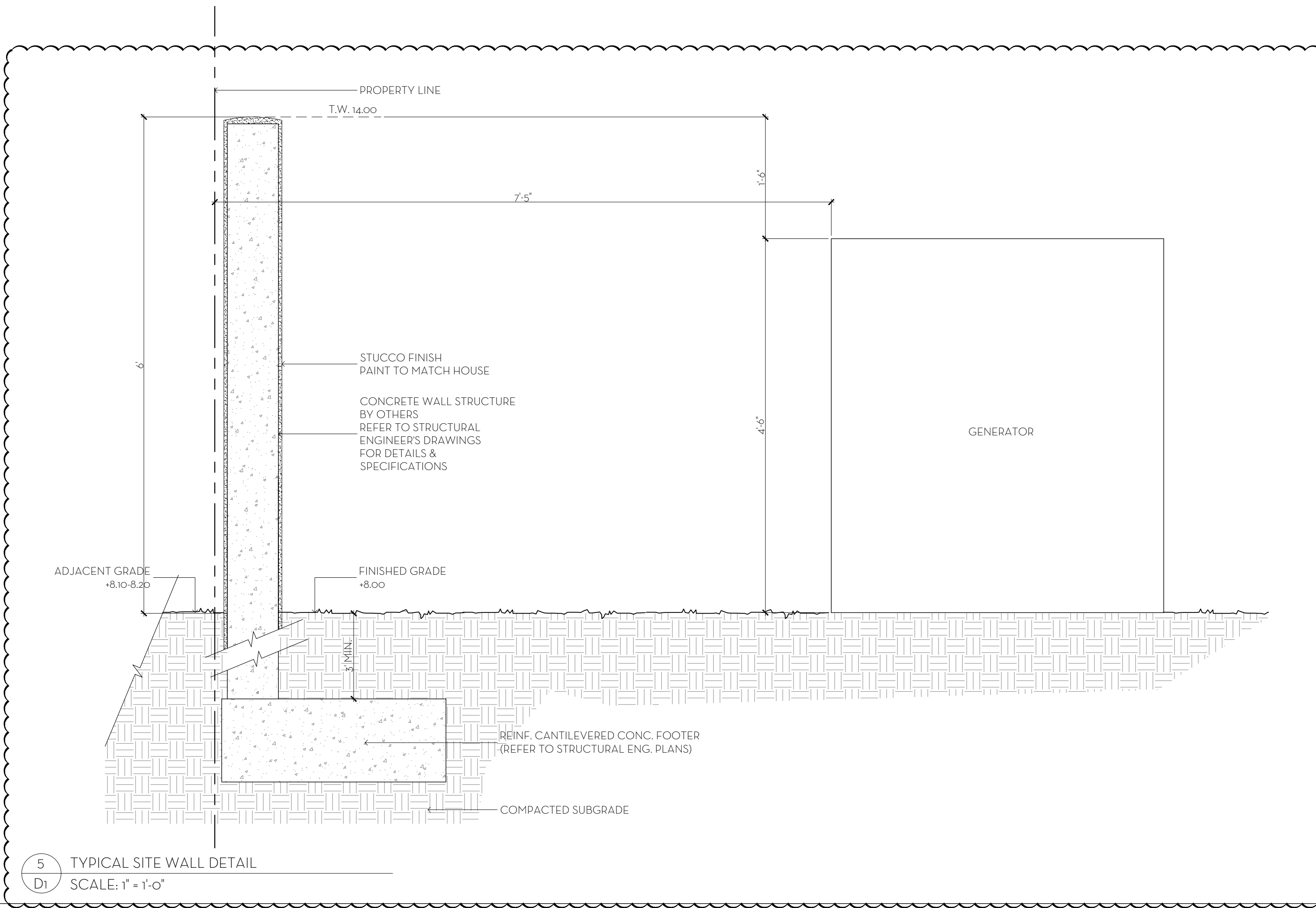
2 COLUMN PLINTH DETAIL
D1 SCALE: 1" = 1'-0"



3 TYPICAL SITE WALL DETAIL
D1 SCALE: 1" = 1'-0"



4 TYPICAL SITE WALL DETAIL
D1 SCALE: 1" = 1'-0"



5 TYPICAL SITE WALL DETAIL
D1 SCALE: 1" = 1'-0"

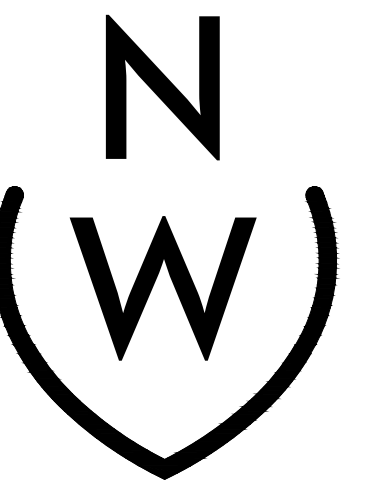
MARIO F. NIEVERA

State of Florida
Landscape Architect
Registration No.
6666856

DETAILS
1330 N. OCEAN BLVD.
PALM BEACH, FLORIDA

SCALE: 1/8" = 1'-0"

07 JUNE 2024
22 MAY 2024



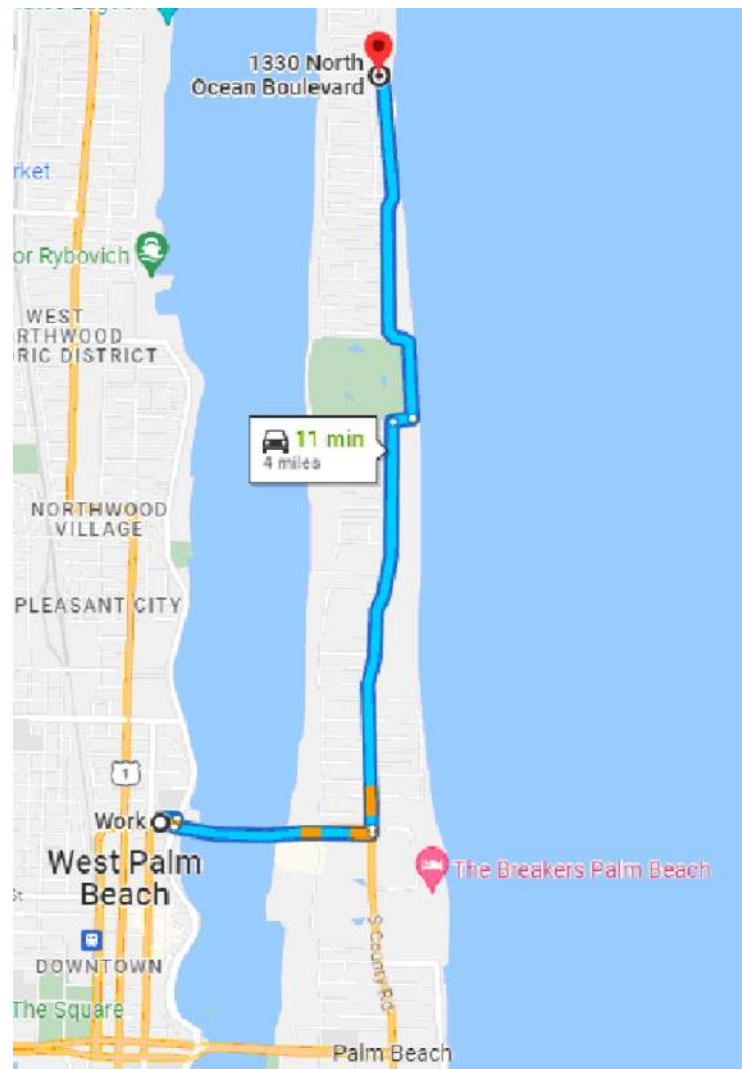
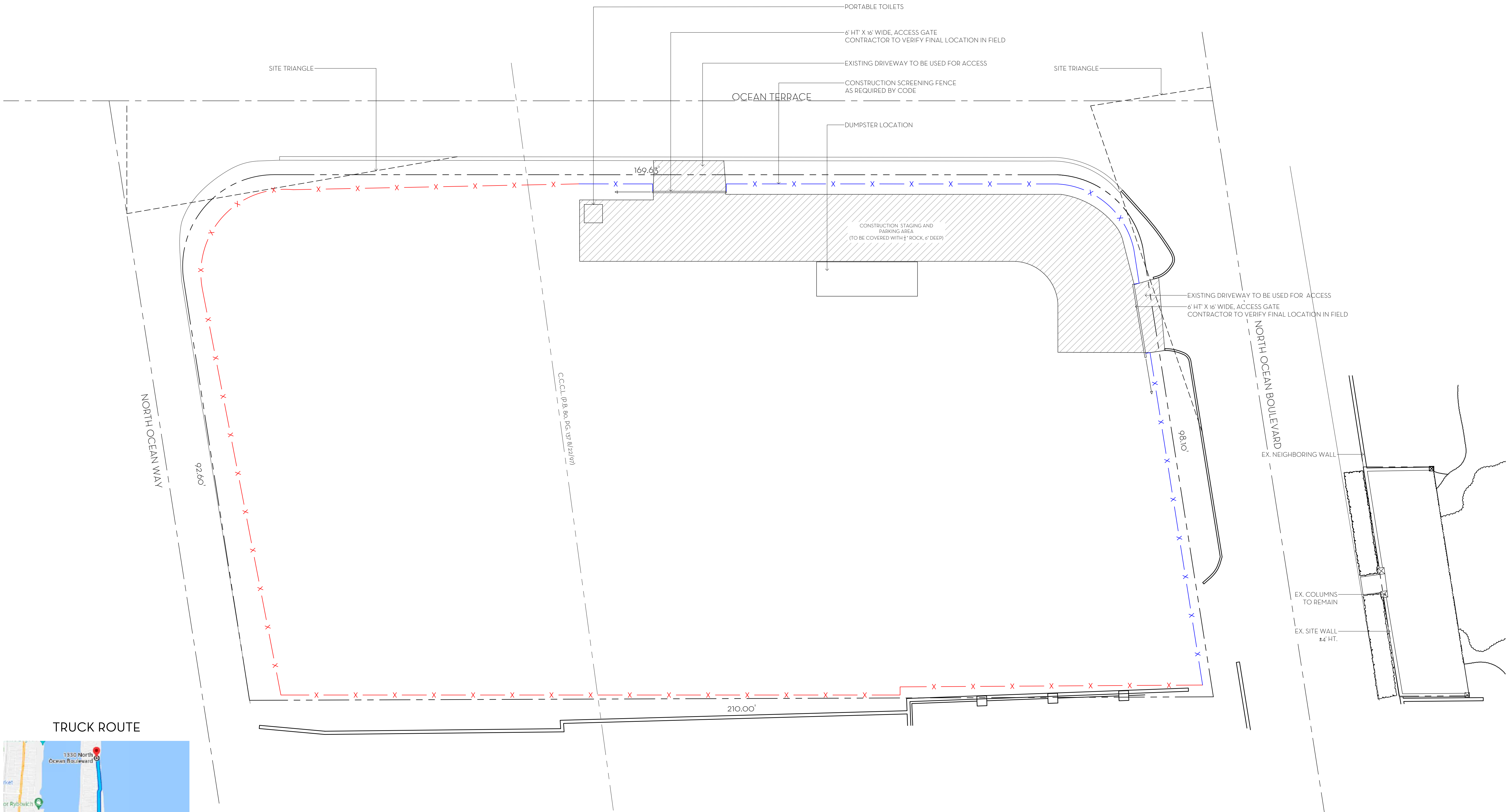
NIEVERA WILLIAMS
DESIGN

625 N. Flagler Drive
Suite 502
West Palm Beach, FL 33401
P: 561-659-2820
F: 561-659-2113

NIEVERAWILLIAMS.COM

D1

ARC-24-051



TRUCK ROUTE MAP & LOGISTICS

MAXIMUM TRUCK SIZE: 30'
BEST ROUTE TO PROPERTY:
FLAGLER MEMORIAL BRIDGE TO NORTH COUNTY RD.,
CONTINUE TO 1330 NORTH OCEAN BLVD..

ESTIMATED NUMBER OF LARGE TRUCK TRIPS: 60

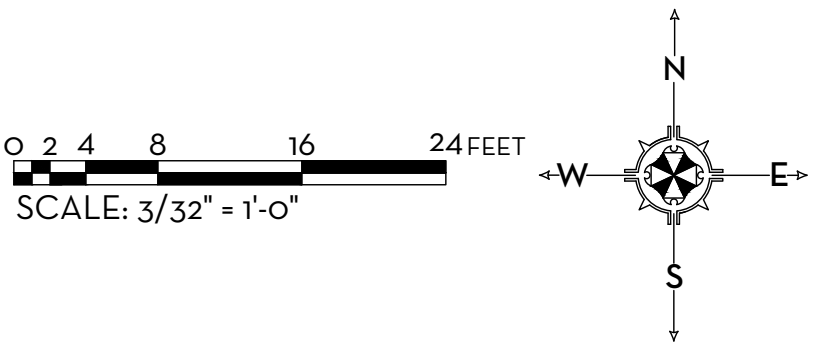
NOTE:

LOT TO BE SODDED & IRRIGATED
WITHIN 30 DAYS POST DEMOLITION

FENCE KEY:

TYPE 1: 8 FT. TALL POST AND SCREEN FENCING

TYPE 2: 8 FT. TALL POST AND SCREEN FENCING
WITH ADDITIONAL POSTS TO ALLOW FOR
CURTAIN SCREENING TO BE LIFTED TO
REQUIRED 16 FT. HEIGHT DURING
CONSTRUCTION



MARIO F. NIEVERA

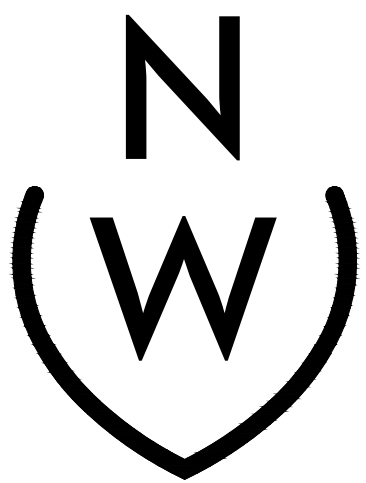
State of Florida
Landscape Architect
Registration No.
6666856

CONSTRUCTION SCREENING / STAGING PLAN
1330 N. OCEAN BLVD.

PALM BEACH, FLORIDA

07 JUNE 2024
22 MAY 2024

SCALE: 3/32" = 1'-0"



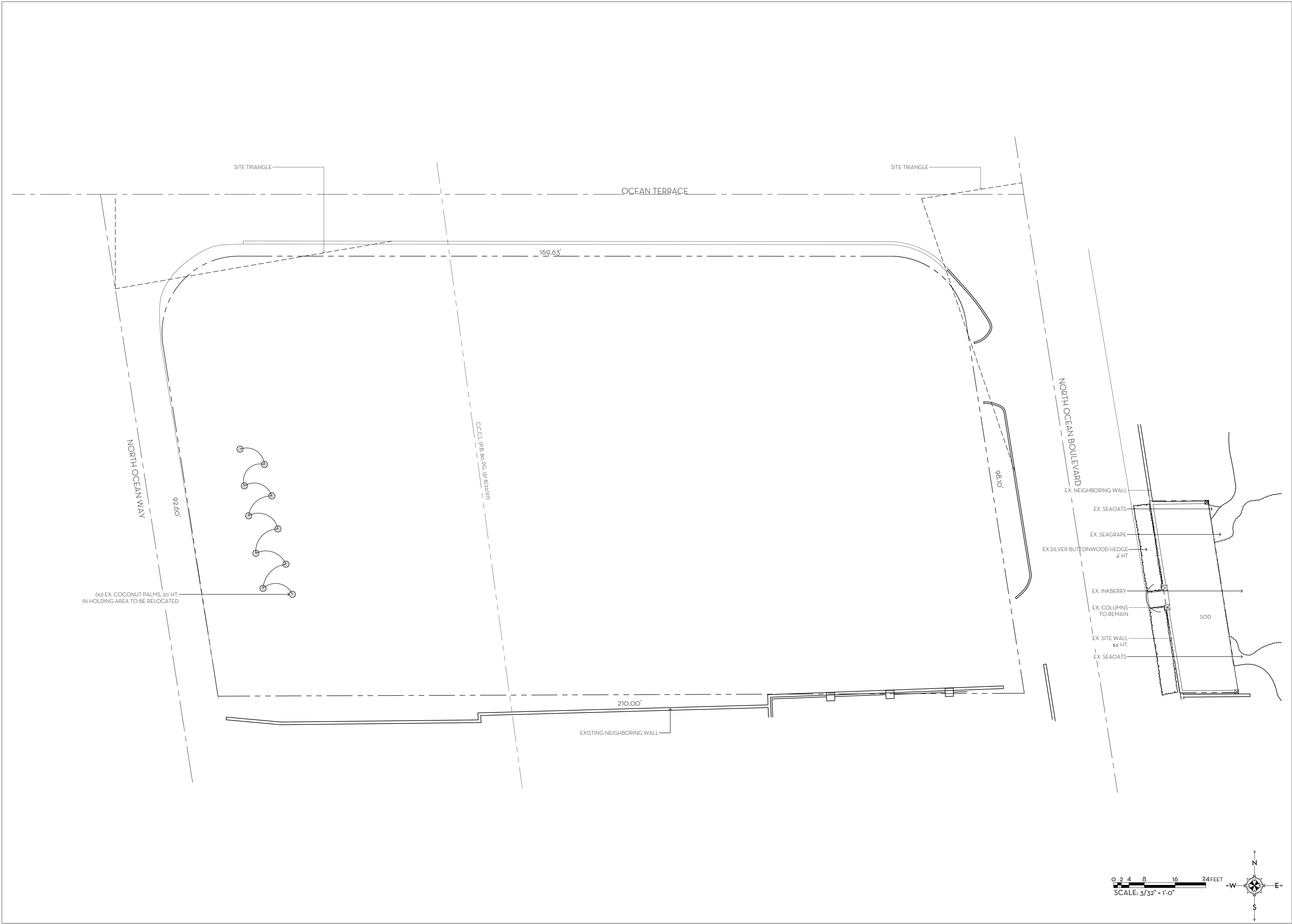
NIEVERA WILLIAMS
DESIGN

625 N. Flagler Drive
Suite 502
West Palm Beach, FL 33401
P: 561-659-2820
F: 561-659-2113

NIEVERAWILLIAMS.COM

CSP

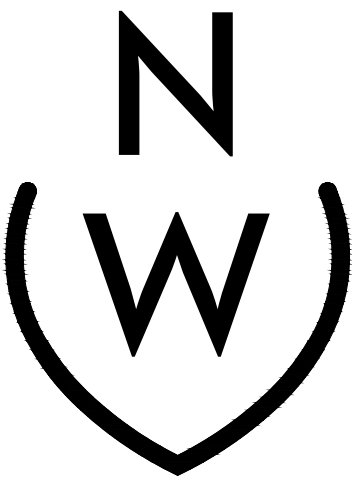
ARC-24-051



MARIO F. NIEVERA

State of Florida
Landscape Architect
Registration No.
6666856

EXISTING CONDITIONS PLAN
1330 N. OCEAN BLVD.
PALM BEACH, FLORIDA



NIEVERA WILLIAMS
DESIGN

625 N. Flagler Drive
Suite 502
West Palm Beach, FL 33401
P: 561-659-2820
F: 561-659-2113

NIEVERAWILLIAMS.COM

EX1

ARC-24-051

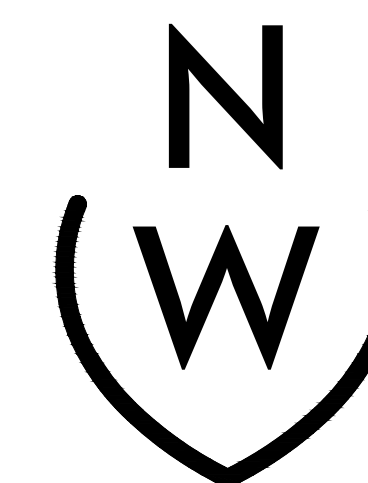
State of Florida
Landscape Architect
Registration No.
6666856

OVERALL OPEN SPACE DIAGRAM

1330 N. OCEAN BLVD.

DAIM BEACH EL QUIDA

07 JUNE 2024
22 MAY 2024

SCALE: $3/32'' = 1'-0''$ 

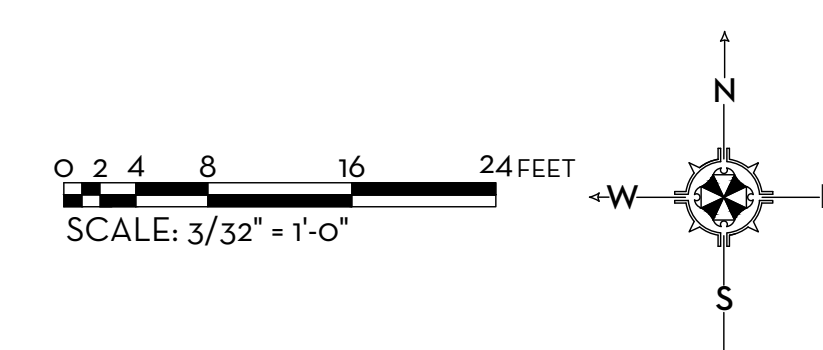
NIEVERA WILLIAMS
DESIGN

625 N. Flagler Drive
Suite 502
West Palm Beach, FL 33401
P: 561-659-2820
F: 561-659-2113

NIEVERAWILLIAMS.COM

OST

ARC-24-051



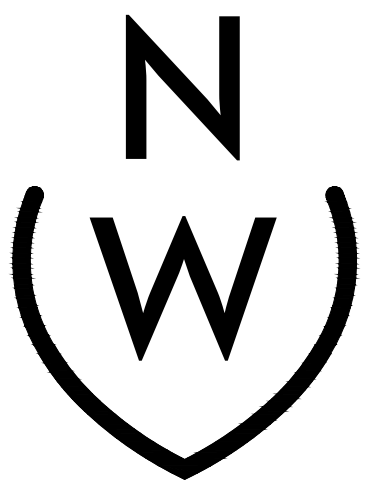
MARIO F. NIEVERA

State of Florida
Landscape Architect
Registration No.
6666856

FRONT YARD OPEN SPACE DIAGRAM
1330 N. OCEAN BLVD.

PALM BEACH, FLORIDA

07 JUNE 2024
22 MAY 2024



NIEVERA WILLIAMS
DESIGN

625 N. Flagler Drive
Suite 502
West Palm Beach, FL 33401
P: 561-659-2820
F: 561-659-2113

NIEVERAWILLIAMS.COM

OS2

ARC-24-051

SCALE: 3/32" = 1'-0"

