

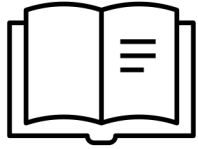
Landmarking Ideas

Listed Geographically from North to South

Preservation Goals

1. Preserving Distinct Examples of the Town's Housing Inventory/Types
2. Creating Nodes of Landmarked Properties that Preserve Historic Streetscapes
3. Prioritizing Structures that Showcase Currently Underrepresented Architectural Styles
4. Increasing the Collection of Resources Designed by Notable Architects/Builders
5. Ensuring a Balanced Geographical Distribution of Landmarks Across Town

Symbol Legend



Properties that were included in Barbara Hoffstot's Landmark Architecture of Palm Beach that have not been landmarked



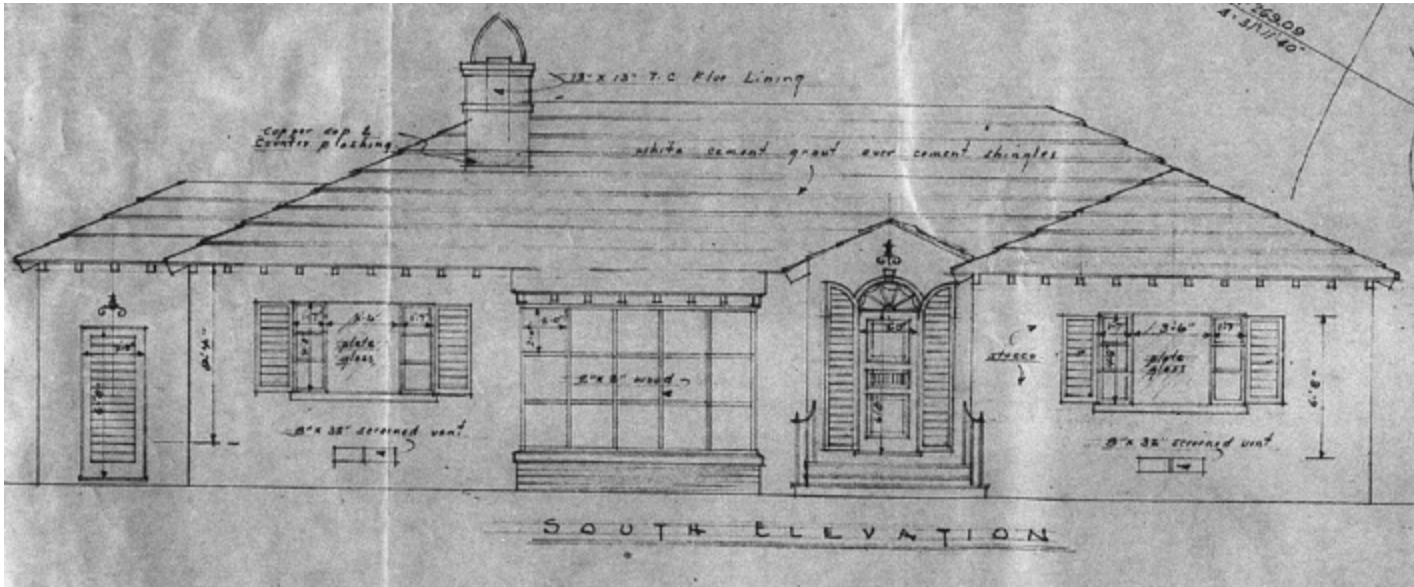
Properties that were included in Anne Fairfax's list



229 Onondaga Avenue

1952

Minimal Traditional
Howard Chilton



Goal #s - 3, 4 & 5

- 3 – Underrepresented Style
- 4 - Notable Architect/Builder
- 5 – Geographical Distribution



216 Monterey Road

1938
Monterey
Maurice Fatio

Goal #s - 3, 4 & 5

3 – Underrepresented Style
4 - Notable Architect/Builder
5 – Geographical Distribution

220 Eden Road

1943

Monterey
Maurice Fatio

Goal #s - 3, 4, & 5

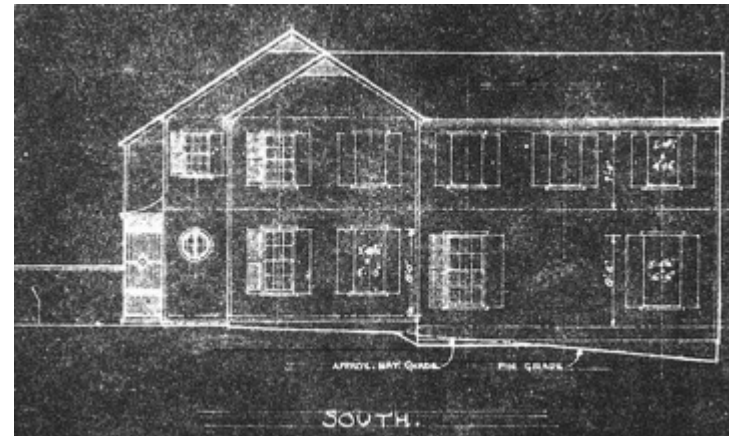
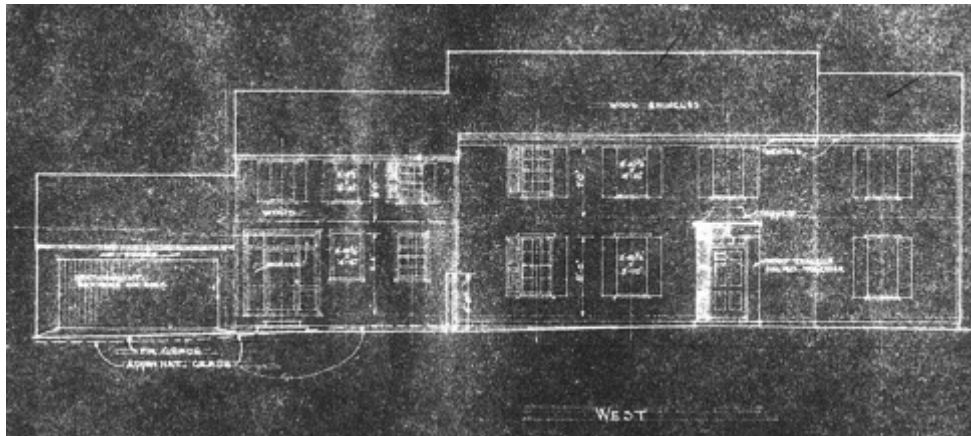
3 – Underrepresented Style
4 - Notable Architect/Builder
5 – Geographical Distribution





301 Ridgeview Drive

1936
Colonial Revival
Wyeth & King



Goal #s –3, 4 & 5

- 3 – Underrepresented Style
- 4 - Notable Architect/Builder
- 5 – Geographical Distribution



246 Tangier Avenue

1935

Monterey
Howard Major

Goal #s - 3, 4, & 5

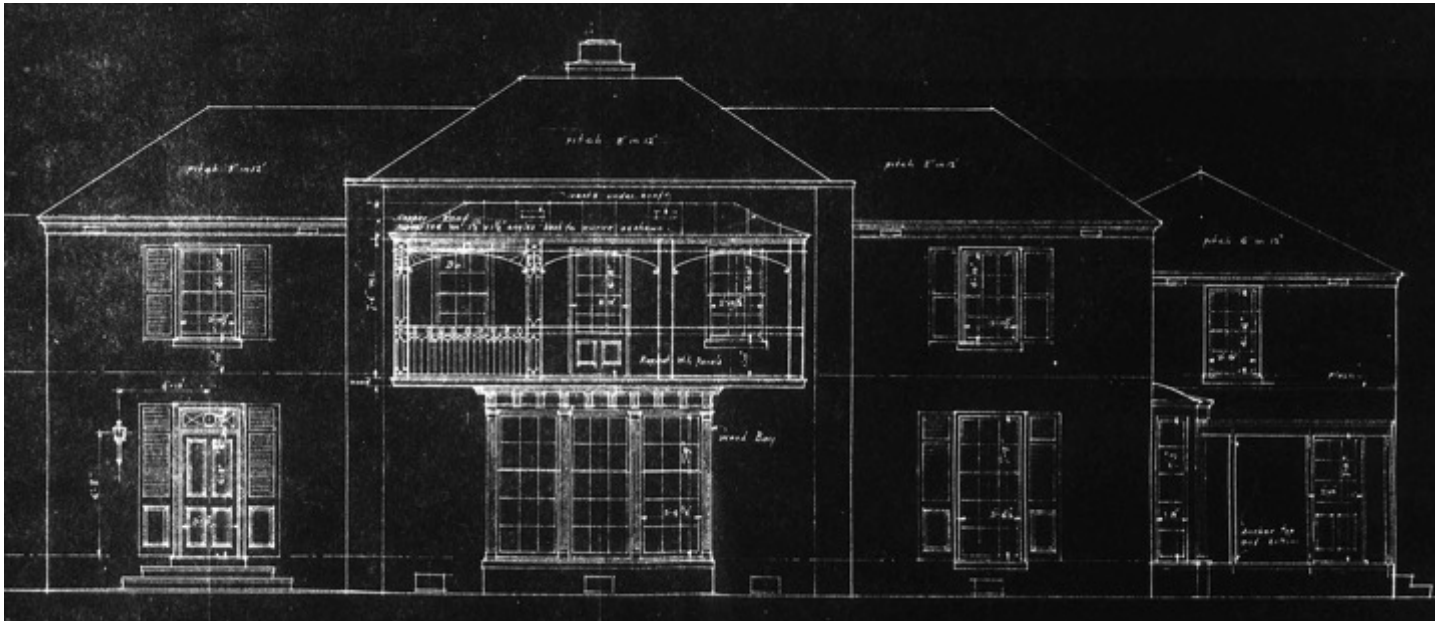
3 – Underrepresented Style
4 - Notable Architect/Builder
5 – Geographical Distribution





159 Dunbar Road

1938
British Colonial
John Volk



Goal #s – 3 & 4

3 – Underrepresented Style
4 - Notable Architect/Builder



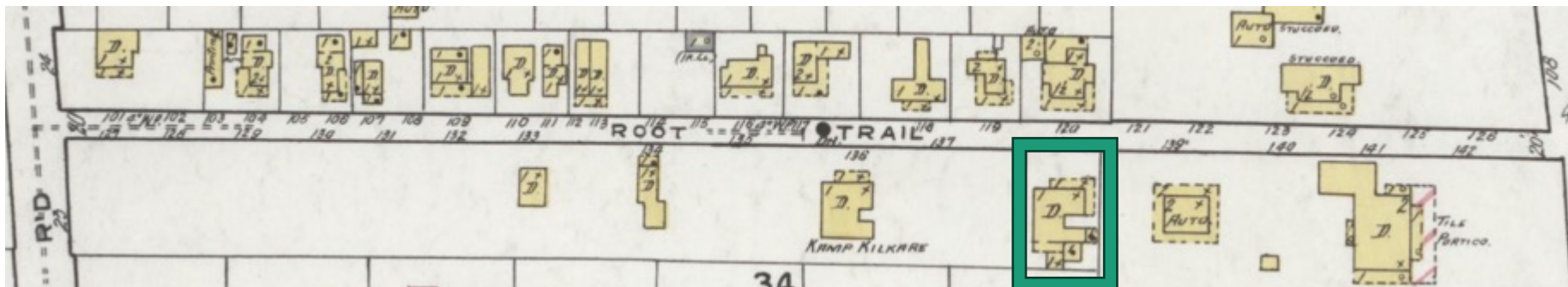
126 Root Trail

c. 1900-1919
Frame Vernacular

Goal #s – 2 & 3

2 – Nodes/Historic
Streetscapes

3 – Underrepresented Style



1919 Sanborn Fire Insurance Map



147 Root Trail

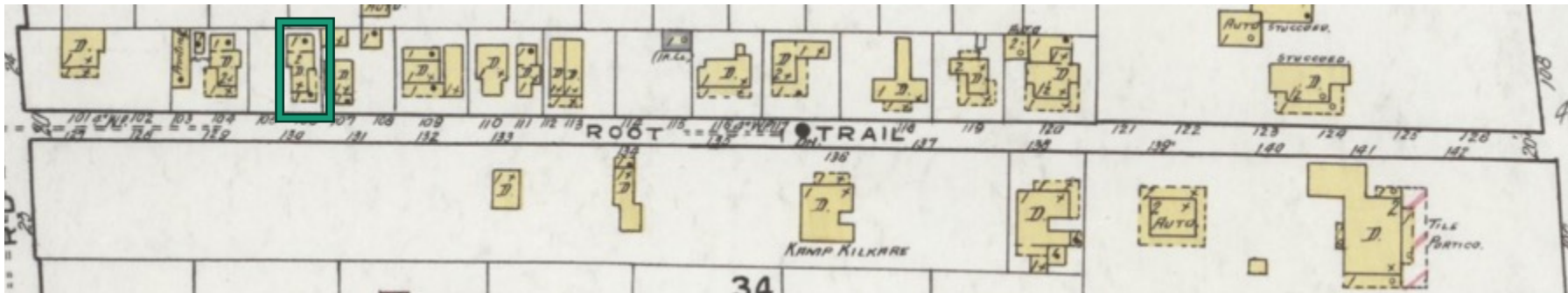
1920
Frame Vernacular

Goal #s – 2 & 3

2 – Nodes/Historic
Streetscapes
3 – Underrepresented Style

167 Root Trail

c. 1900-1919
Frame Vernacular



1919 Sanborn Fire Insurance Map

Goal #s – 2 & 3

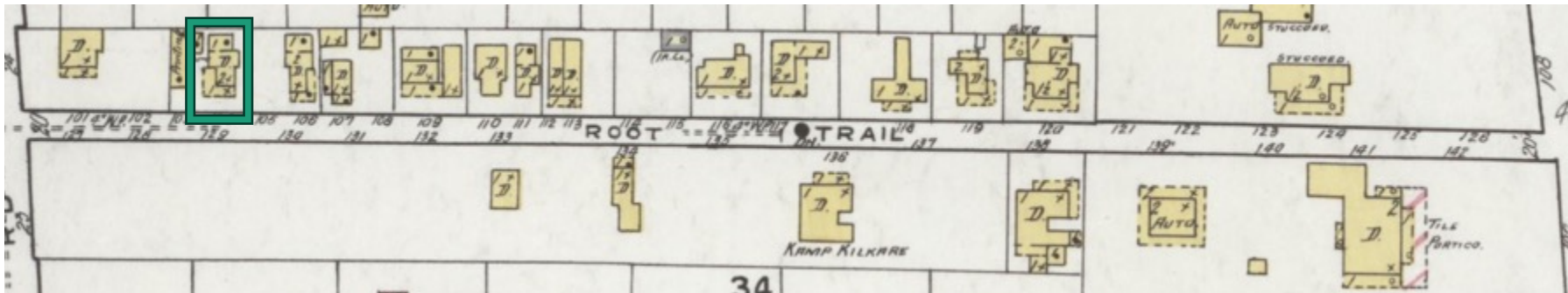
2 – Nodes/Historic
Streetscapes

3 – Underrepresented Style



171 Root Trail

c. 1900-1919
Frame Vernacular



1919 Sanborn Fire Insurance Map

Goal #s – 2 & 3

2 – Nodes/Historic
Streetscapes

3 – Underrepresented Style



303 Pendleton Lane

1937
Monterey
John Volk

Goal #s – 2, 3 & 4

- 2 – Nodes/Historic Streetscapes
- 3 – Underrepresented Style
- 4 - Notable Architect/Builder



306 Pendleton Lane

1939
Monterey
John Volk

Goal #s – 2, 3 & 4

- 2 – Nodes/Historic Streetscapes
- 3 – Underrepresented Style
- 4 - Notable Architect/Builder



311 Pendleton Lane

1938
Monterey
John Volk

Currently - HSB

Goal #s – 2, 3 & 4

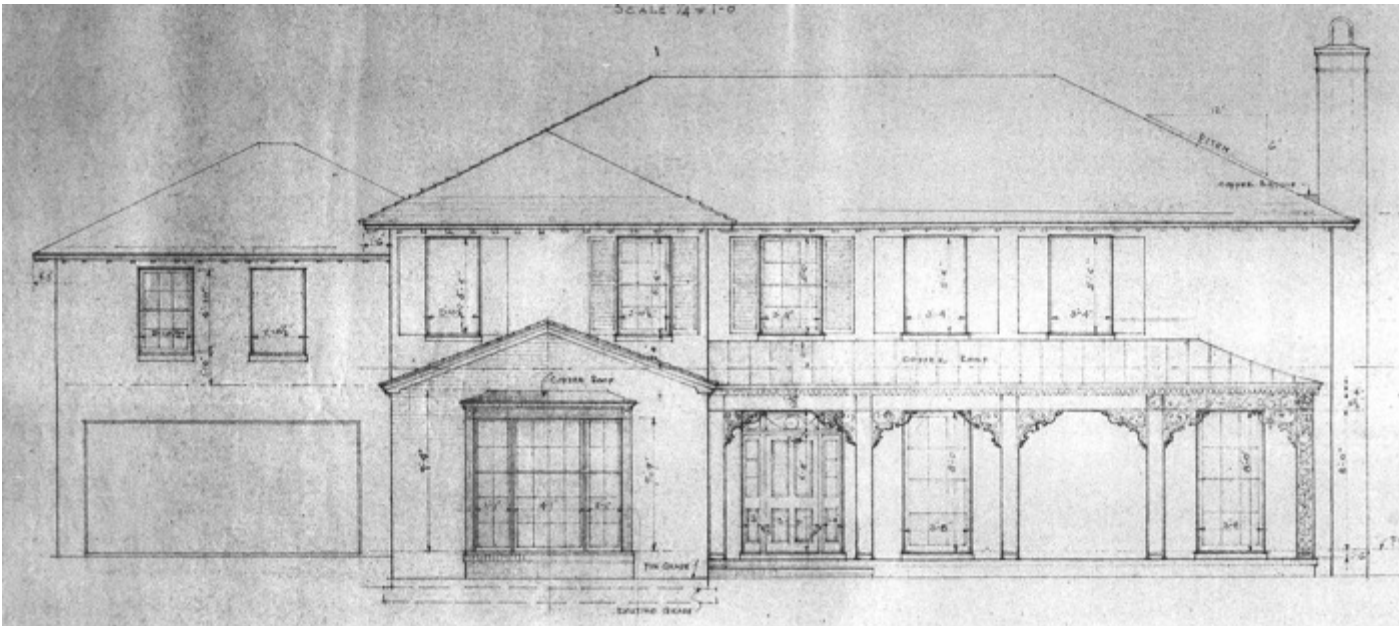
- 2 – Nodes/Historic Streetscapes
- 3 – Underrepresented Style
- 4 - Notable Architect/Builder



315 Pendleton Lane

1939

Georgian Revival
John Volk



Goal #s – 2, 3 & 4

- 2 – Nodes/Historic Streetscapes
- 3 – Underrepresented Style
- 4 - Notable Architect/Builder



322 Pendleton Lane

1937
Monterey
John Volk

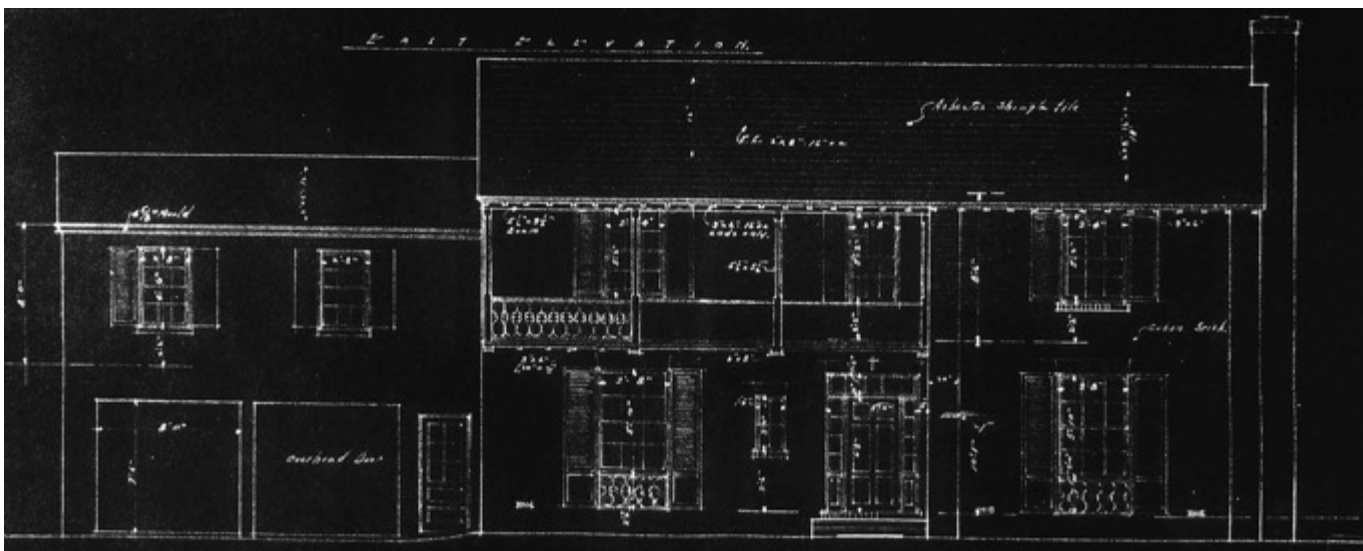
Goal #s – 2, 3 & 4

- 2 – Nodes/Historic Streetscapes
- 3 – Underrepresented Style
- 4 - Notable Architect/Builder



333 Pendleton Lane

1940
Monterey
John Volk



Goal #s – 2, 3 & 4

- 2 – Nodes/Historic Streetscapes
- 3 – Underrepresented Style
- 4 - Notable Architect/Builder



151 Barton Avenue

1929

Georgian Revival
Marion Sims Wyeth

Goal #s – 3 & 4

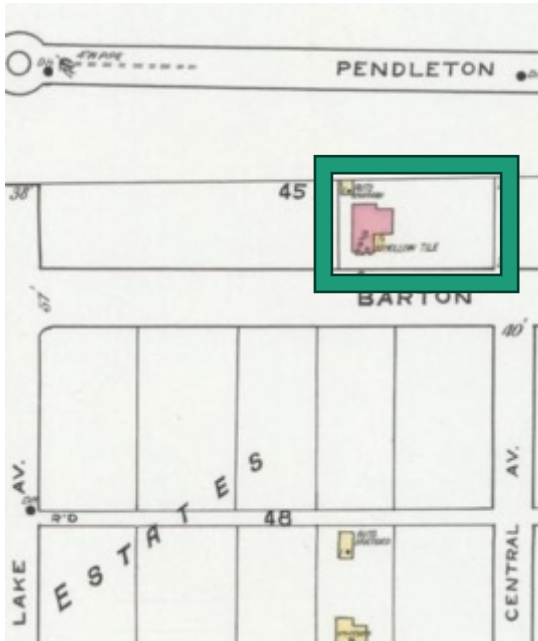
3 – Underrepresented Style
4 - Notable Architect/Builder



309 Barton Avenue

1919 Residence with
1933 Alterations & Additions
by Wyeth & King

Monterey



Goal #s – 3 & 4

- 3 – Underrepresented Style
- 4 - Notable Architect/Builder

1919 Sanborn Fire Insurance Map

Photo from Preservation Foundation, date unknown

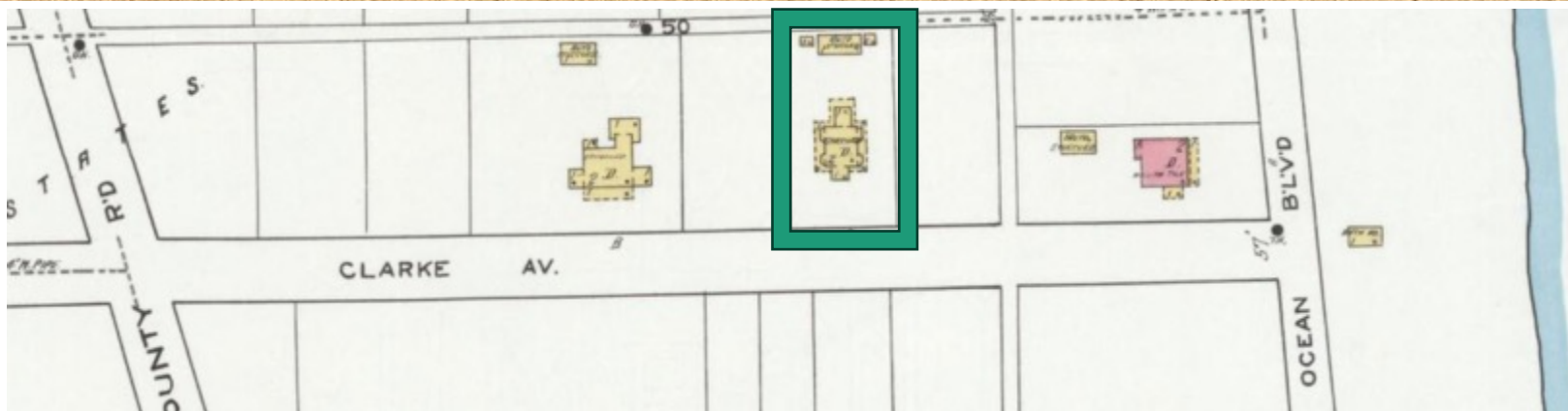


113 Clarke Avenue

c. 1915-1919
Bungalow/Prairie

Goal # – 3

3 – Underrepresented Style

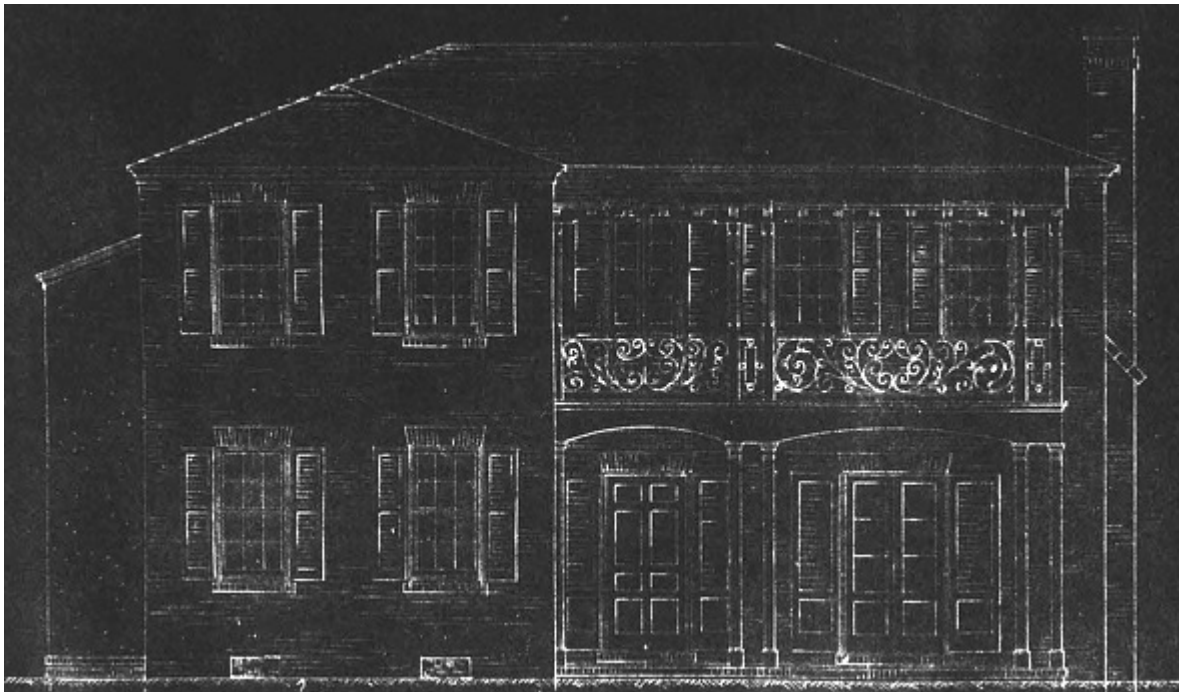


1919 Sanborn Fire Insurance Map



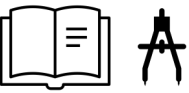
345 Seabreeze Avenue

1935
Monterey
Bruce Kitchell



Goal #s – 3 & 4

3 – Underrepresented Style
4 - Notable Architect/Builder



225 South County Road

1924

Dutch Colonial
City Builders



Goal #s – 3 & 4

3 – Underrepresented Style
4 - Notable Architect/Builder





400 Seaspray Avenue

1920

Vernacular/Dutch Colonial
City Builders



Goal #s – 3 & 4

3 – Underrepresented Style
4 - Notable Architect/Builder



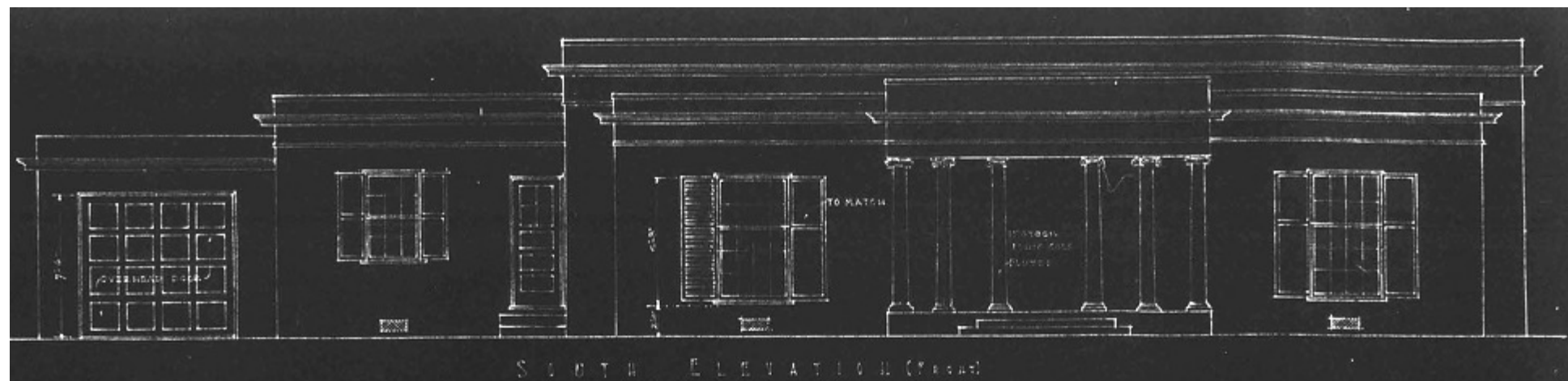
425 Seaspray Avenue

1940

Neo-Classical Revival
Edgar Wortman

Goal #s – 3 & 4

3 – Underrepresented Style
4 - Notable Architect/Builder



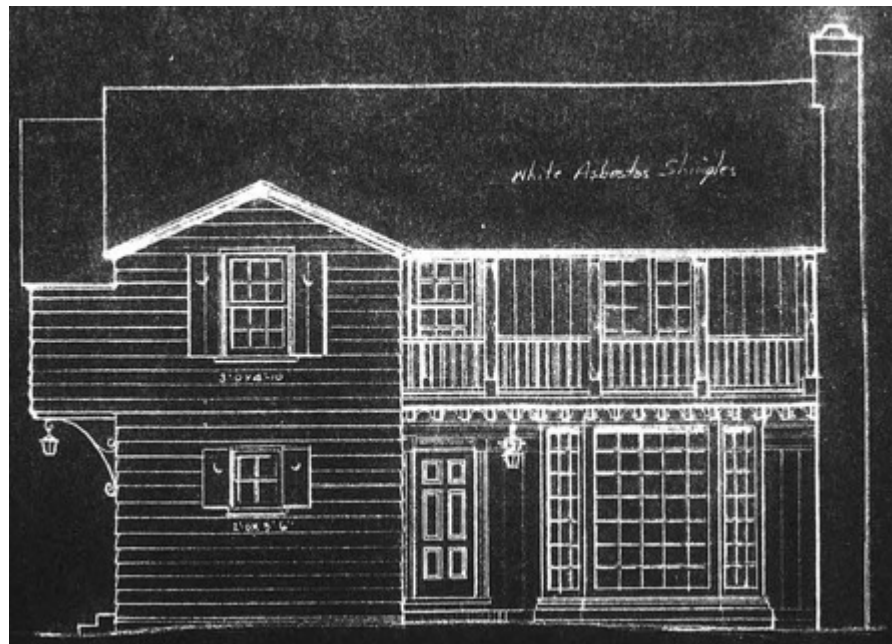


413 Seaview Avenue

1936

Monterey

DaCamera & Chase-Builders



Goal # – 3

3 – Underrepresented Style



325 South Lake Drive

1946 & 1951
British Colonial
Belford Shoumate

10 Unit Condominium



Goal #s – 1, 3 & 4

- 1- Underrepresented Housing Types
- 3 – Underrepresented Style
- 4 - Notable Architect/Builder



401 Australian Avenue

1924

Mediterranean Revival
Vincent S. Hall - Builder

2 Units

Originally Built as 2 Apartments

Goal # – 1

1- Underrepresented Housing Types



Photo from Real Estate Brochure, c. 1995



411 Australian Avenue
(Includes 403-411)

1924
Mediterranean Revival
Vincent S. Hall - Builder



3 Residential Units
Condominium

Goal # – 1

1- Underrepresented Housing Types



415 Australian Avenue

1940
Minimal Traditional
Julius Jacobs

Goal #s – 3 & 4

3 – Underrepresented Style
4 - Notable Architect/Builder



141 Chilean Avenue

c. 1910-1919
Bungalow/Prairie



Goal # – 3



3 - Underrepresented Style

1919 Sanborn Fire Insurance Map



214 Chilean Avenue



1929

Mediterranean Revival

George B. Davidson – Builder

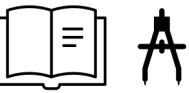
Lillian Piper – Original Owner

11 Unit Condominium

Goal # – 1

1- Underrepresented Housing Types





230 Chilean Avenue

c. 1910s – 20s

Prairie/Am. Four Square



Goal # – 3

3 - Underrepresented Style



234 Chilean Avenue

c. 1910s – 20s

Prairie/Am. Four Square



Goal # – 3

3 - Underrepresented Style



301 Chilean Avenue

1922

Vernacular

H.C. Daniels - Builder

6 Unit Condominium

Goal #s – 1 & 3

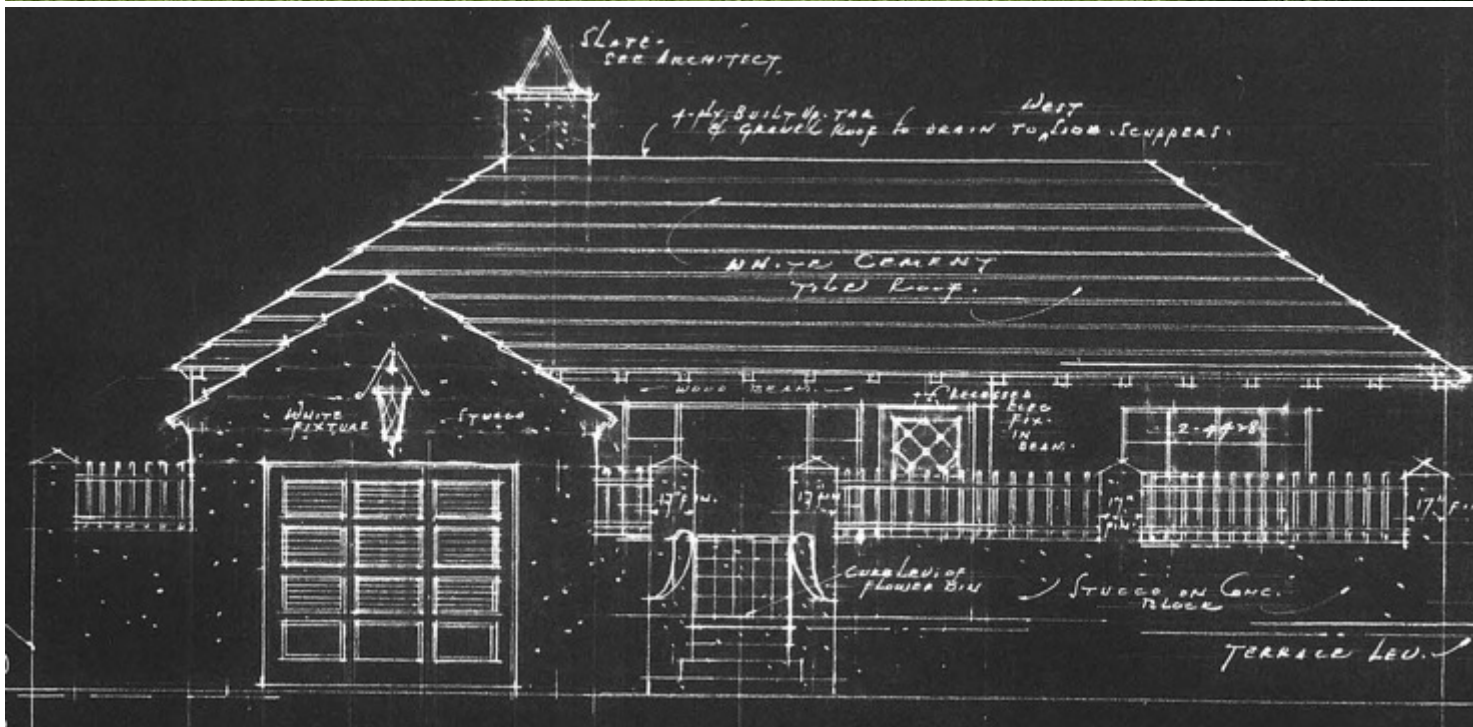
- 1- Underrepresented Housing Types
- 3 - Underrepresented Style



315 Chilean Avenue

1940

British Colonial
Belford Shoumate



Goal #s— 3 & 4

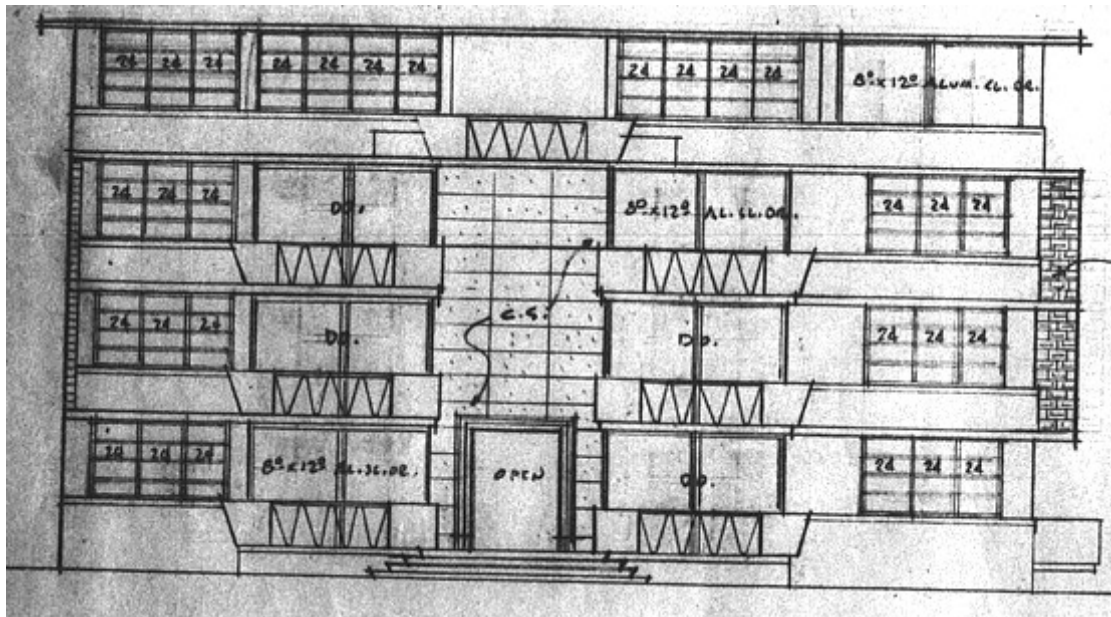
3 – Underrepresented Style
4 - Notable Architect/Builder



401 Peruvian Avenue

1959-60
Mid-Century Modern
John Stetson

17 Unit Condominium



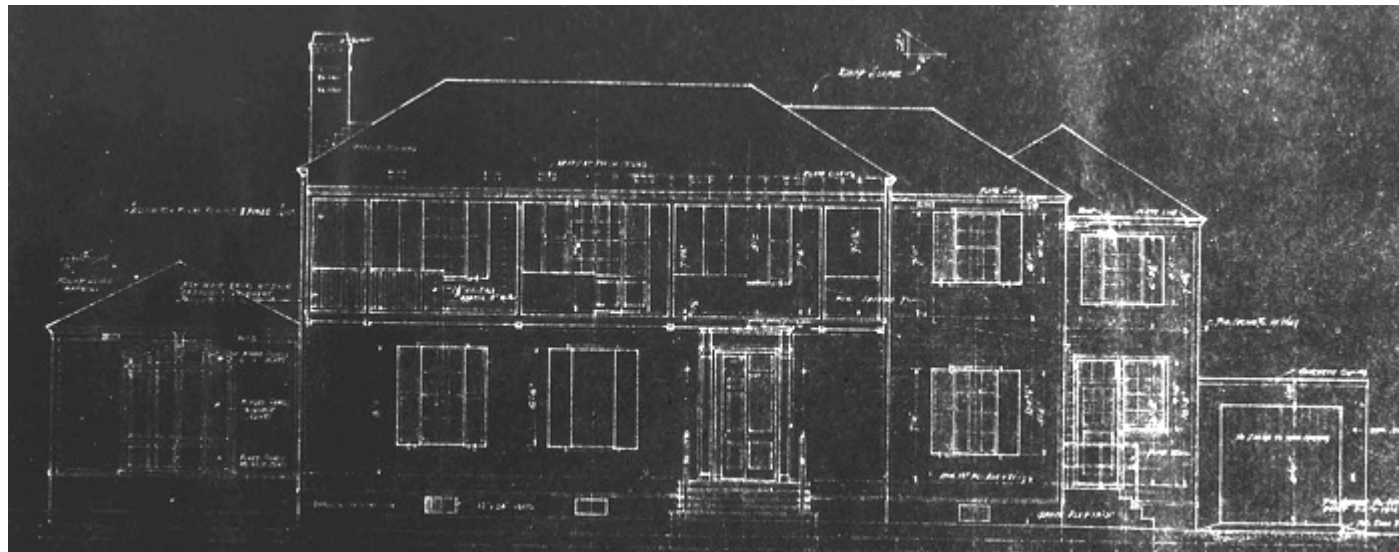
Goal #s – 1 & 4

- 1- Underrepresented Housing Types
- 4 – Notable Architect/Builder



480 South Ocean Blvd

1935
Monterey
Wyeth & King



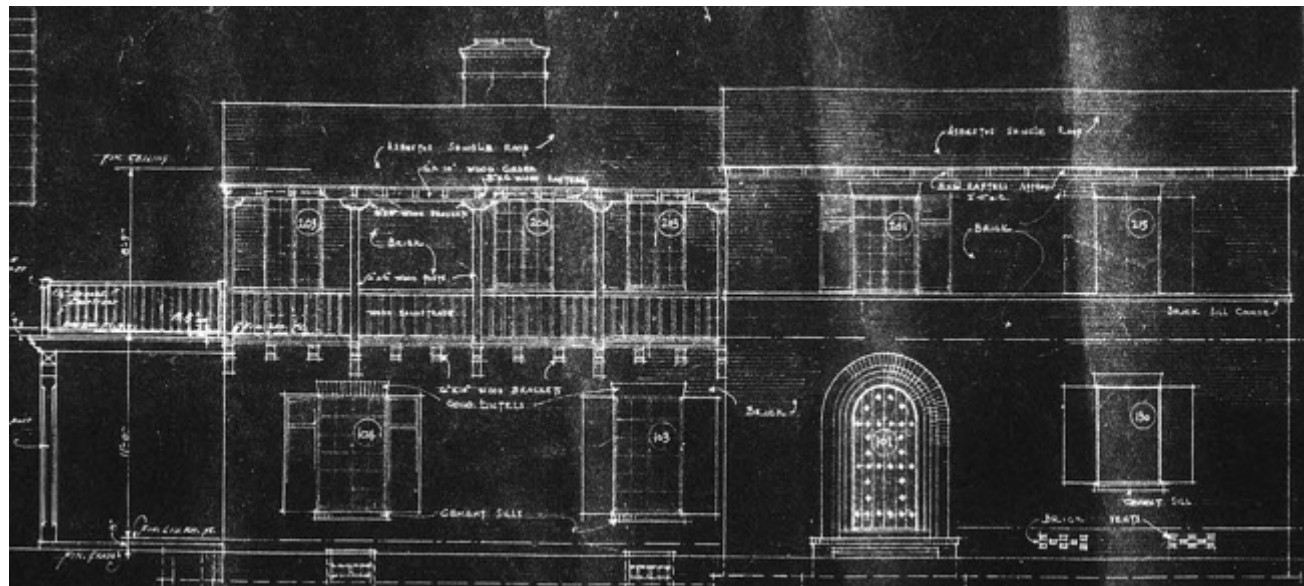
Goal #s – 3 & 4

3 – Underrepresented Style
4 - Notable Architect/Builder



1934
Monterey
Maurice Fatio

3 – Underrepresented Style
4 - Notable Architect/Builder





750 South County Road

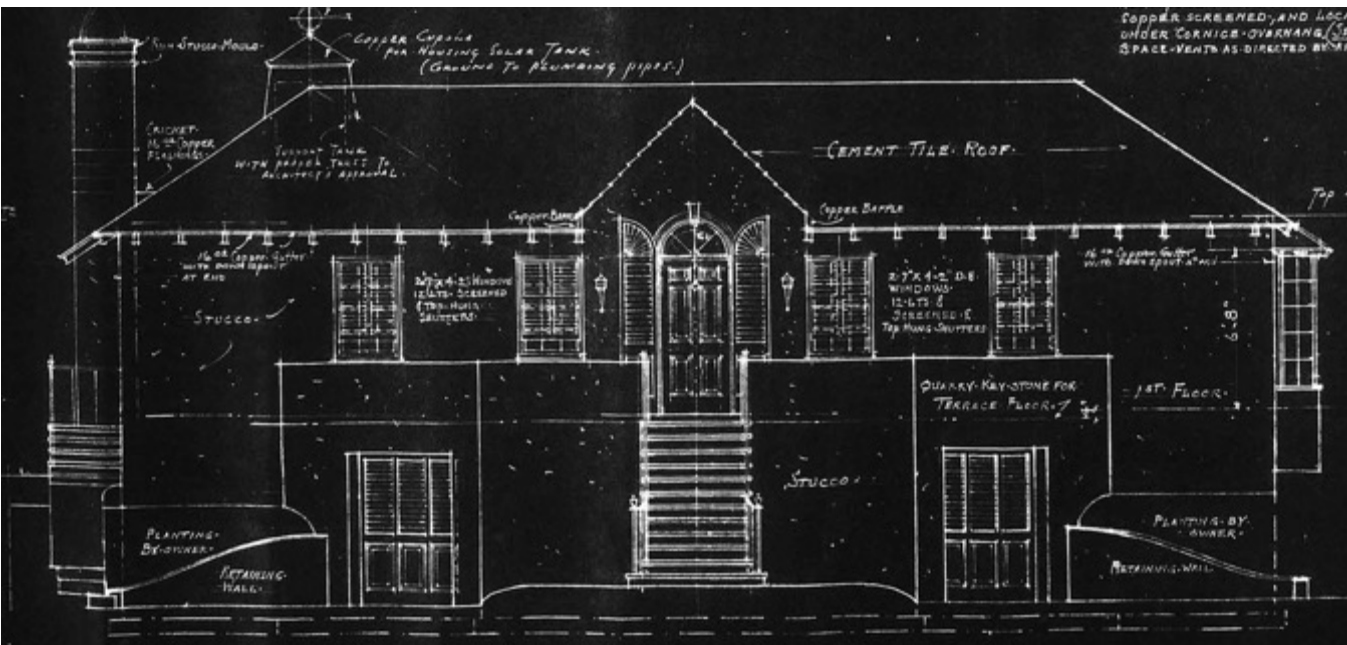
1941

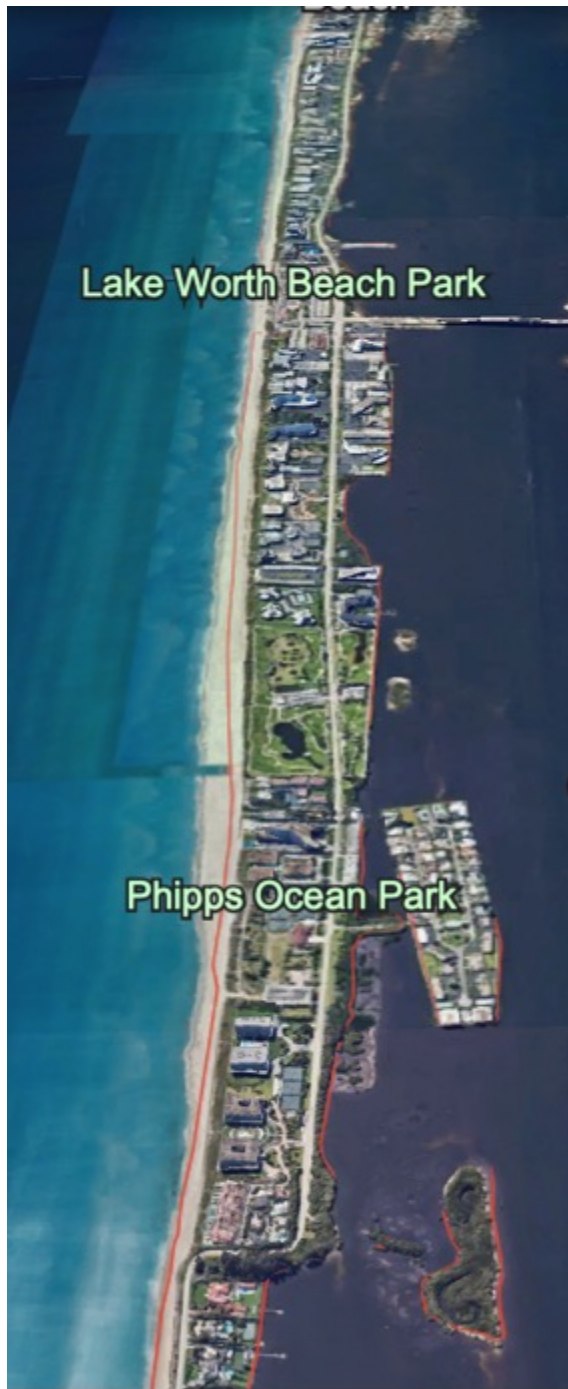
Georgian Revival
Belford Shoumate



Goal #s – 3 & 4

3 – Underrepresented Style
4 - Notable Architect/Builder





South Ocean Boulevard

Scenic Vista

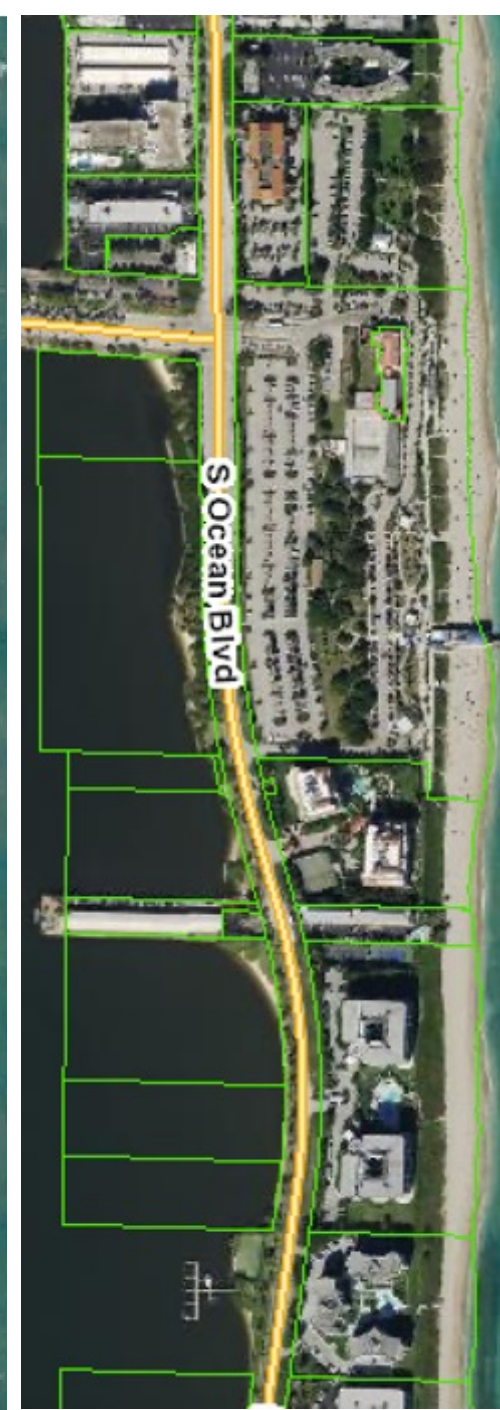
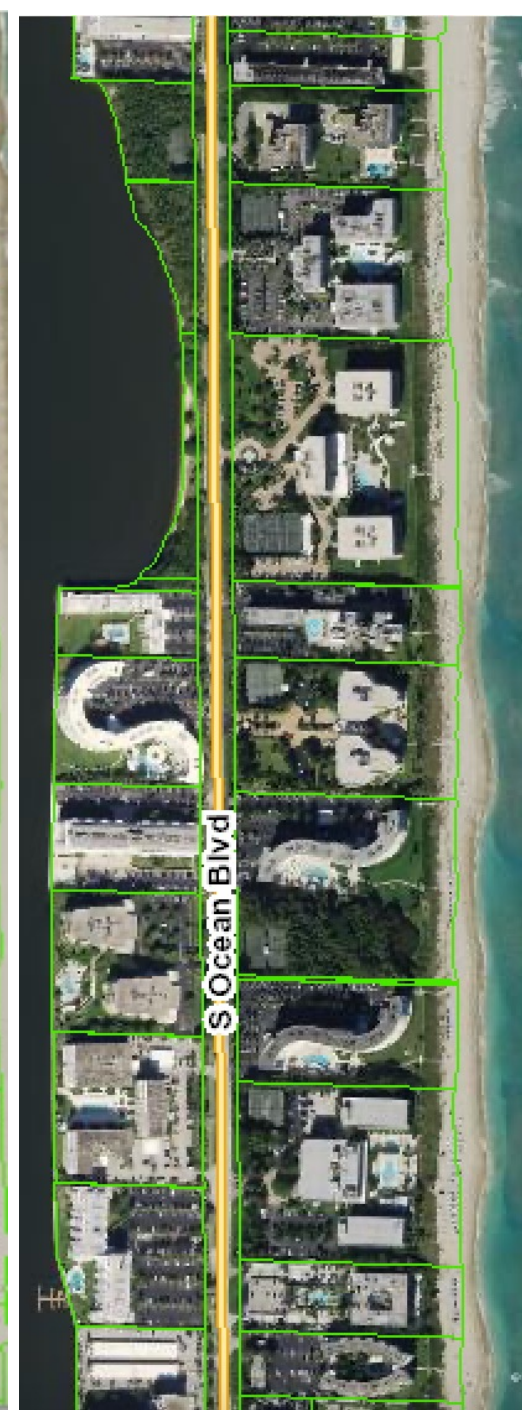
100 Foot Wide
Road Right-of-Way

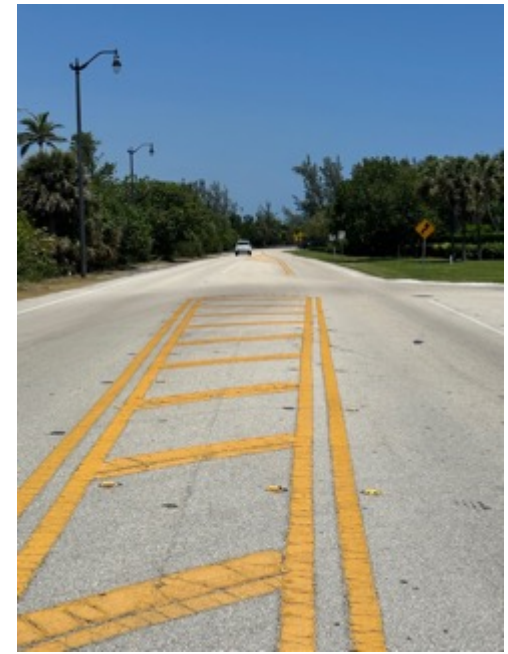
From Sloan's Curve
To
Southern Town Limit

Goal # - 5

5 – Geographical Distribution







Landmarking Ideas

Listed Geographically from North to South