

RECEIVED  
By yfigueroa at 11:29 am, Apr 12, 2024

MARIO F. NIEVERA  
State of Florida  
Landscape Architect  
Registration No.  
6666856

OVERALL SITE PLAN  
1330 N. OCEAN BLVD.  
PALM BEACH, FLORIDA

SCALE: 3/32" = 1'-0"

14 MARCH 2024



NIEVERA WILLIAMS  
DESIGN

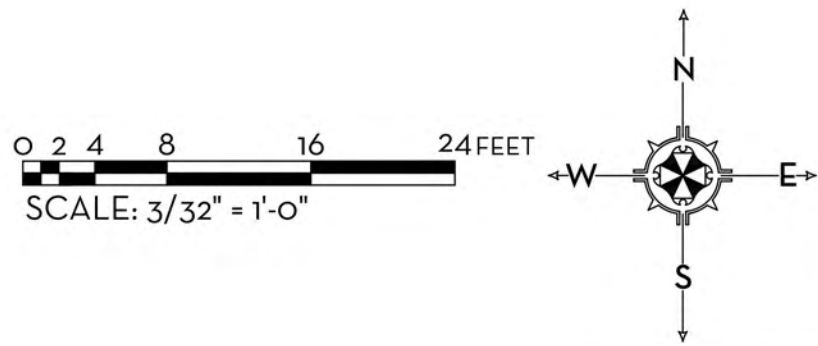
625 N. Flagler Drive  
Suite 502  
West Palm Beach, FL 33401  
P: 561-659-2820  
F: 561-659-2113

NIEVERAWILLIAMS.COM

Lo  
ARC-24-051



LEGEND  
+5.00 EXISTING SPOT ELEVATION (NAVD)  
+5.00 PROPOSED SPOT ELEVATION (NAVD)







1 SOUTH EXTERIOR PROPERTY LINE ELEVATION  
EL1 SCALE: 1/8" = 1'-0"

MARIO F. NIEVERA

State of Florida  
Landscape Architect  
Registration No.  
6666856

SOUTH ELEVATION  
1330 N. OCEAN BLVD.  
PALM BEACH, FLORIDA

SCALE: 1/8" = 1'-0"

1 APRIL 2024



NIEVERA WILLIAMS  
DESIGN

625 N. Flagler Drive  
Suite 502  
West Palm Beach, FL 33401  
P: 561-659-2820  
F: 561-659-2113

NIEVERAWILLIAMS.COM

EL1

ARC-24-051





1 NORTH EXTERIOR PROPERTY LINE ELEVATION  
EL2 SCALE: 1/8" = 1'-0"

MARIO F. NIEVERA

State of Florida  
Landscape Architect  
Registration No.  
6666856

NORTH ELEVATION  
1330 N. OCEAN BLVD.  
PALM BEACH, FLORIDA

SCALE: 1/8" = 1'-0"

1 APRIL 2024



NIEVERA WILLIAMS  
DESIGN

625 N. Flagler Drive  
Suite 502  
West Palm Beach, FL 33401  
P: 561-659-2820  
F: 561-659-2113

NIEVERAWILLIAMS.COM

EL2

ARC-24-051





1 EAST EXTERIOR PROPERTY LINE ELEVATION  
EL3 SCALE: 1/8" = 1'-0"

MARIO F. NIEVERA

State of Florida  
Landscape Architect  
Registration No.  
6666856

EAST ELEVATION  
1330 N. OCEAN BLVD.  
PALM BEACH, FLORIDA

SCALE: 1/8" = 1'-0"

1 APRIL 2024



NIEVERA WILLIAMS  
DESIGN

625 N. Flagler Drive  
Suite 502  
West Palm Beach, FL 33401  
P: 561-659-2820  
F: 561-659-2113

NIEVERAWILLIAMS.COM

EL3

ARC-24-051





1 WEST EXTERIOR PROPERTY LINE ELEVATION  
EL4 SCALE: 1/8" = 1'-0"

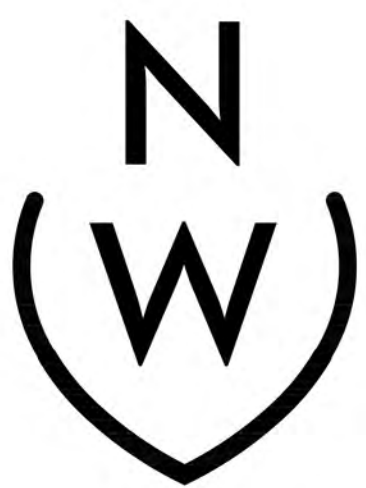
MARIO F. NIEVERA

State of Florida  
Landscape Architect  
Registration No.  
6666856

WEST ELEVATION  
1330 N. OCEAN BLVD.  
PALM BEACH, FLORIDA

SCALE: 1/8" = 1'-0"

1 APRIL 2024



NIEVERA WILLIAMS  
DESIGN

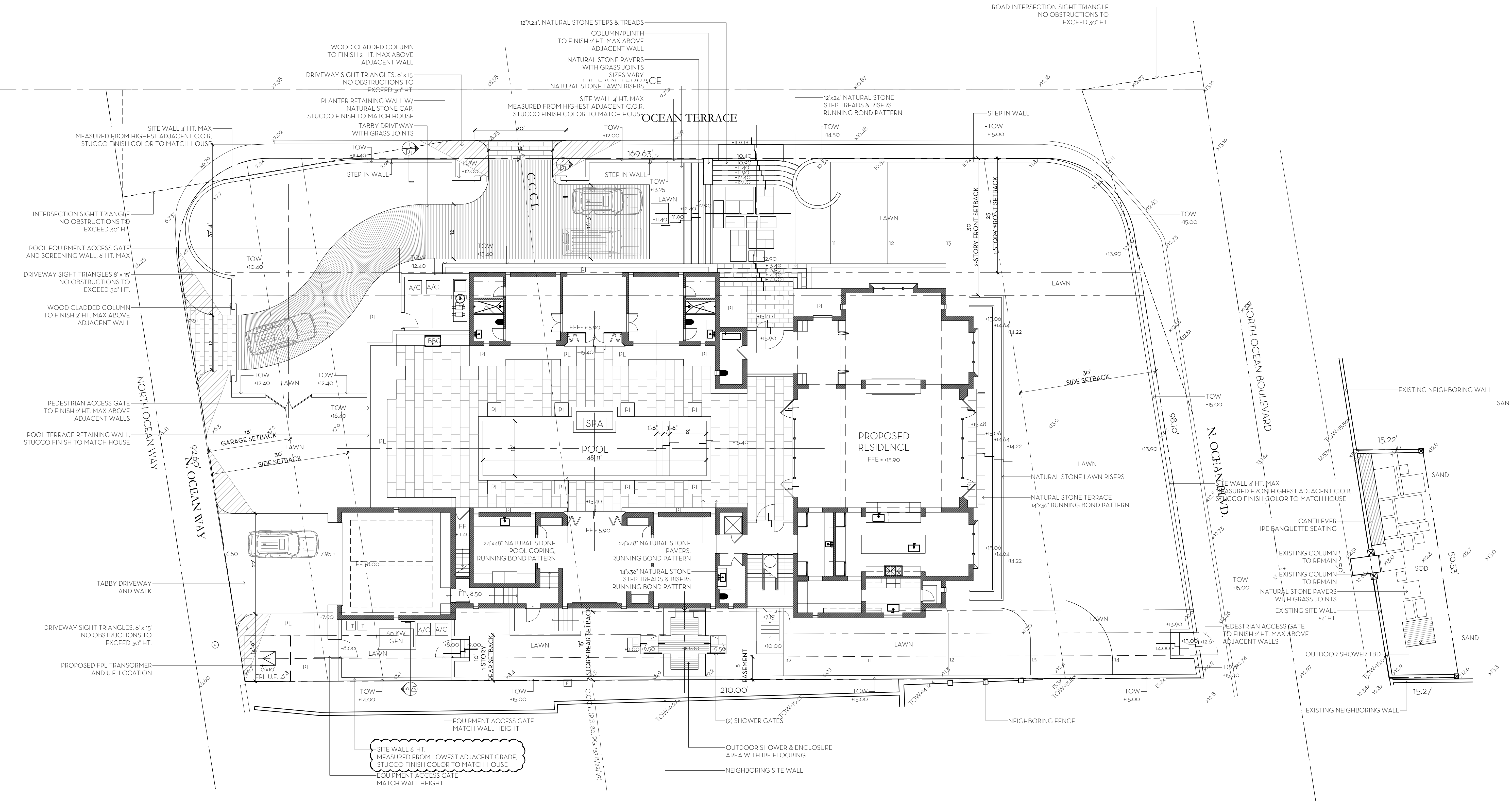
625 N. Flagler Drive  
Suite 502  
West Palm Beach, FL 33401  
P: 561-659-2820  
F: 561-659-2113

NIEVERAWILLIAMS.COM

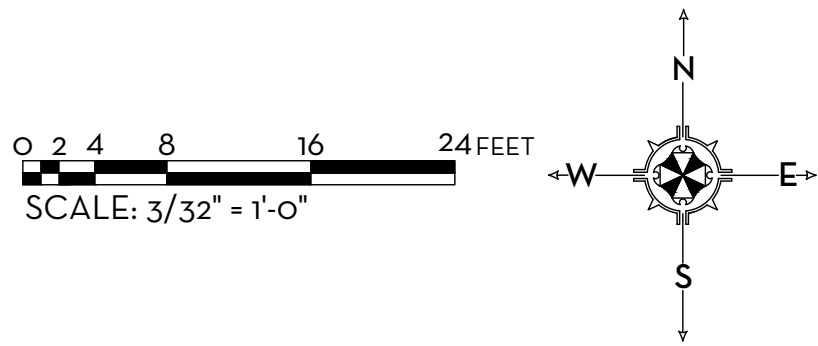
EL4

ARC-24-051





LEGEND	
<span style="color: brown;">●</span> +5.00	EXISTING SPOT ELEVATION (NAVD)
<span style="color: blue;">●</span> +5.00	PROPOSED SPOT ELEVATION (NAVD)



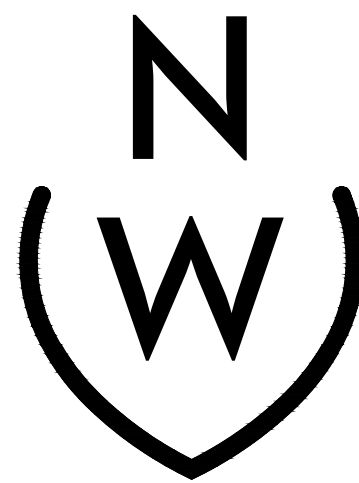
MARIO F. NIEVERA

State of Florida  
Landscape Architect  
Registration No.  
6666856

HARDSCAPE PLAN  
1330 N. OCEAN BLVD.

PALM BEACH, FLORIDA

1 APRIL 2024



NIEVERA WILLIAMS  
DESIGN

625 N. Flagler Drive  
Suite 502  
West Palm Beach, FL 33401  
P: 561-659-2820  
F: 561-659-2113

NIEVERAWILLIAMS.COM



ARC-24-051

SCALE: 3/32" = 1'-0"





NATURAL STONE MATERIAL



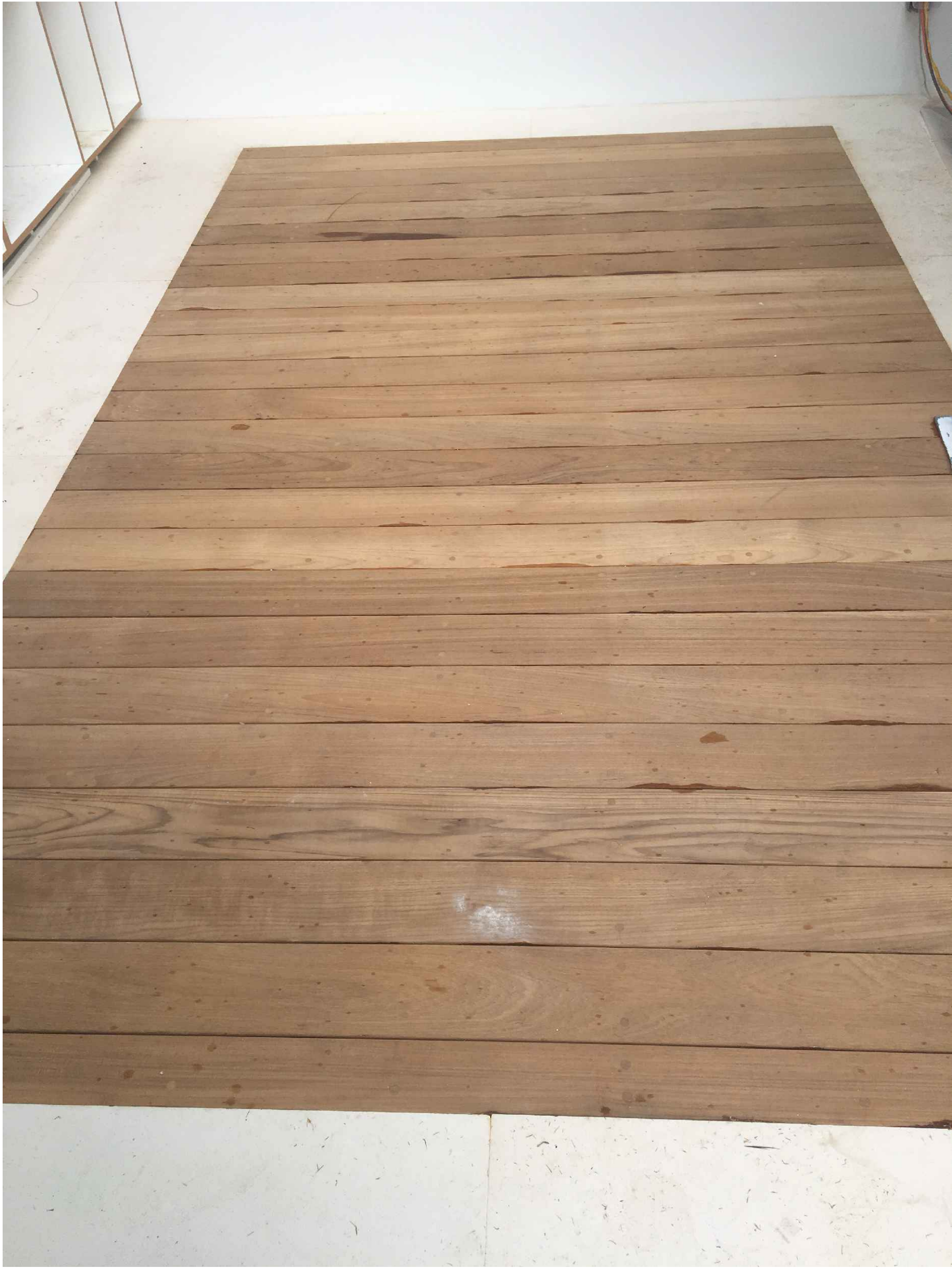
LAWN STEP CONCEPT



DRIVEWAY CONCEPT



TABBY CONCRETE



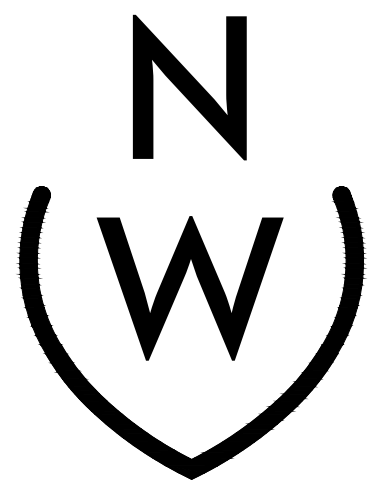
IPE DECK IN SHOWER

MARIO F. NIEVERA

State of Florida  
Landscape Architect  
Registration No.  
6666856

LANDSCAPE MATERIALS  
**1330 N. OCEAN BLVD.**  
PALM BEACH, FLORIDA

1 APRIL 2024



NIEVERA WILLIAMS  
DESIGN

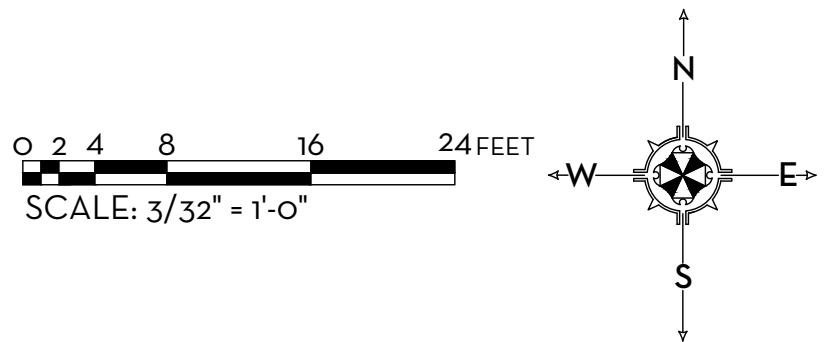
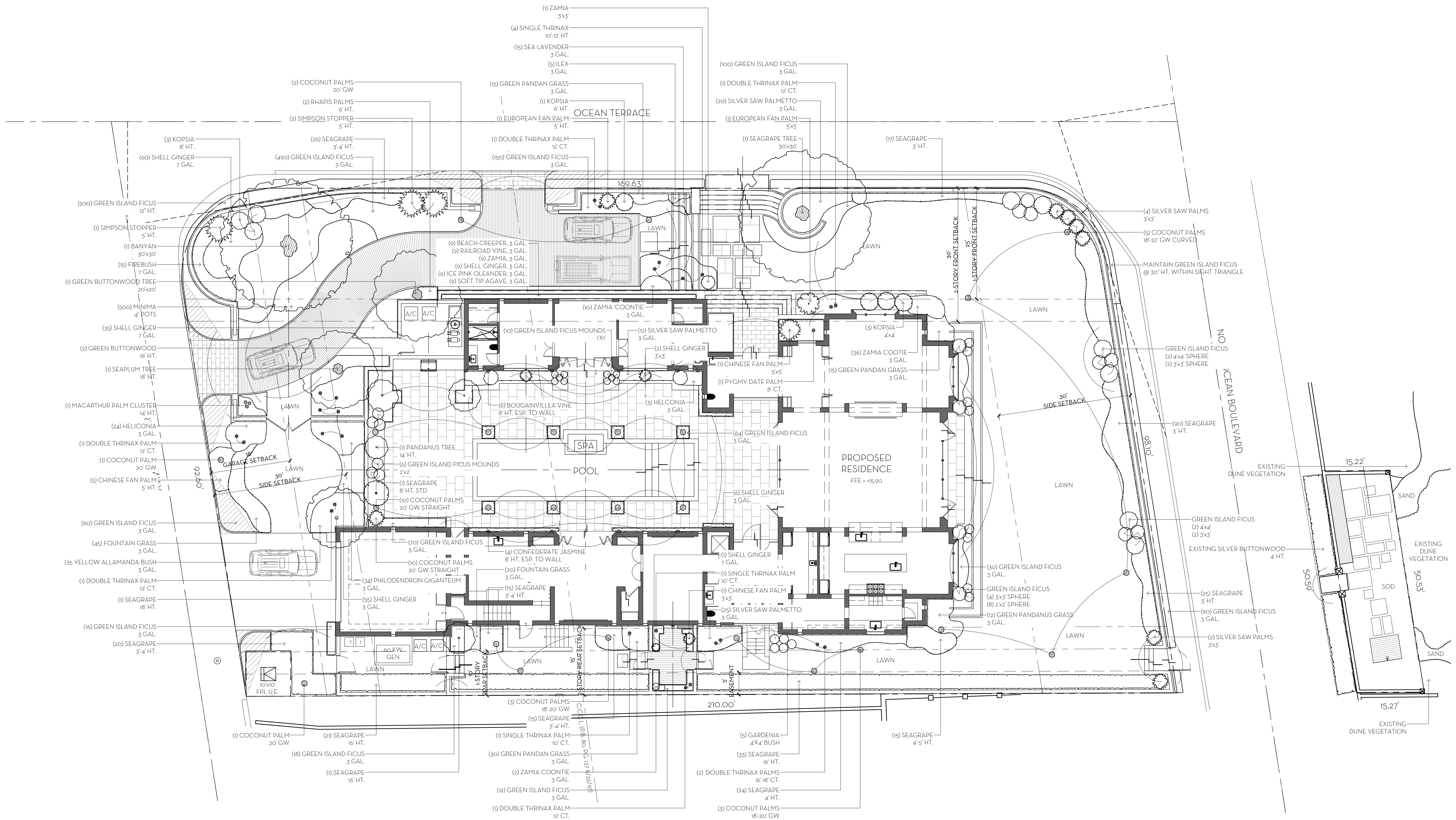
625 N. Flagler Drive  
Suite 502  
West Palm Beach, FL 33401  
P: 561-659-2820  
F: 561-659-2113

NIEVERAWILLIAMS.COM

**L2**

ARC-24-051





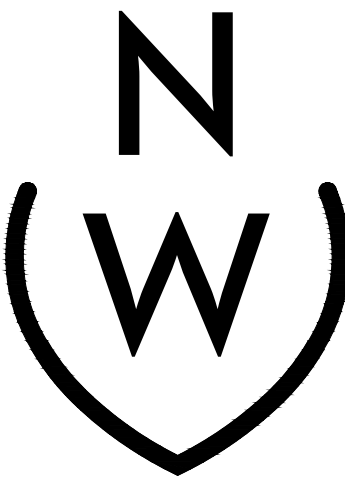
MARIO F. NIEVERA

State of Florida  
Landscape Architect  
Registration No.  
6666856

INTERIM LANDSCAPE PLAN  
**1330 N. OCEAN BLVD.**  
PALM BEACH, FLORIDA

SCALE: 3/32" = 1'-0"

1 APRIL 2024



NIEVERA WILLIAMS  
DESIGN

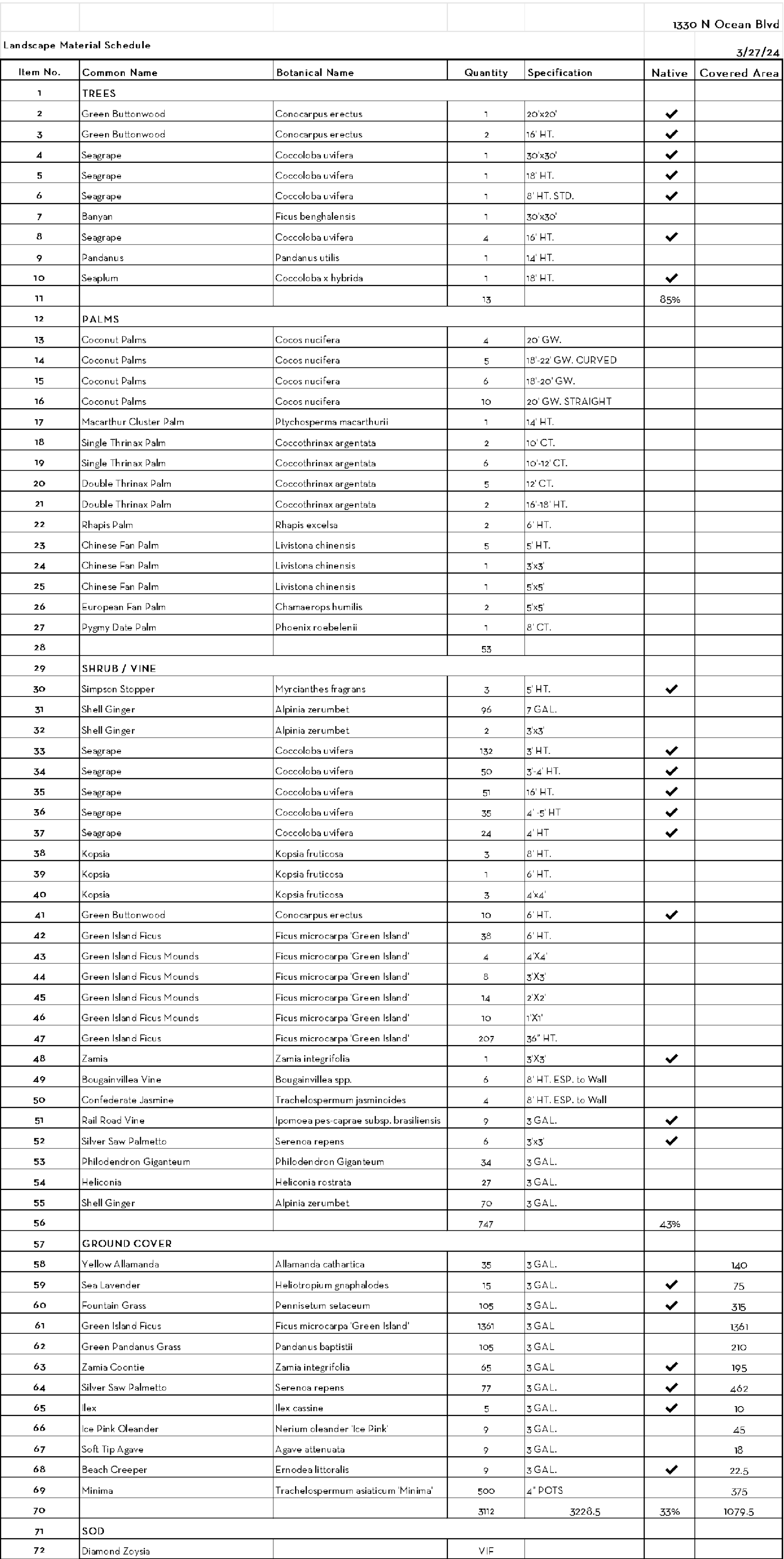
625 N. Flagler Drive  
Suite 502  
West Palm Beach, FL 33401  
P: 561-659-2820  
F: 561-659-2113

NIEVERAWILLIAMS.COM

**LP1**

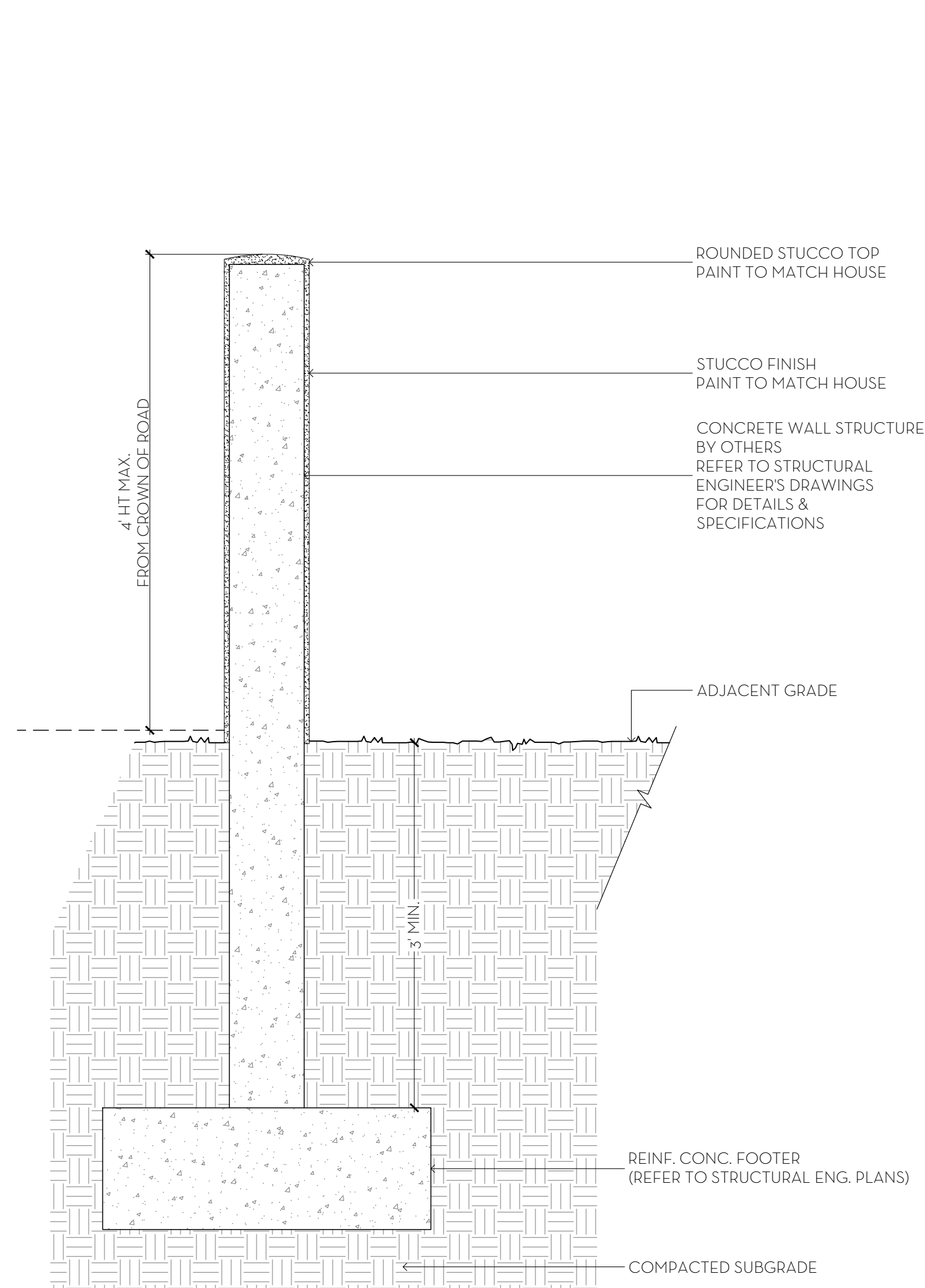
ARC-24-051



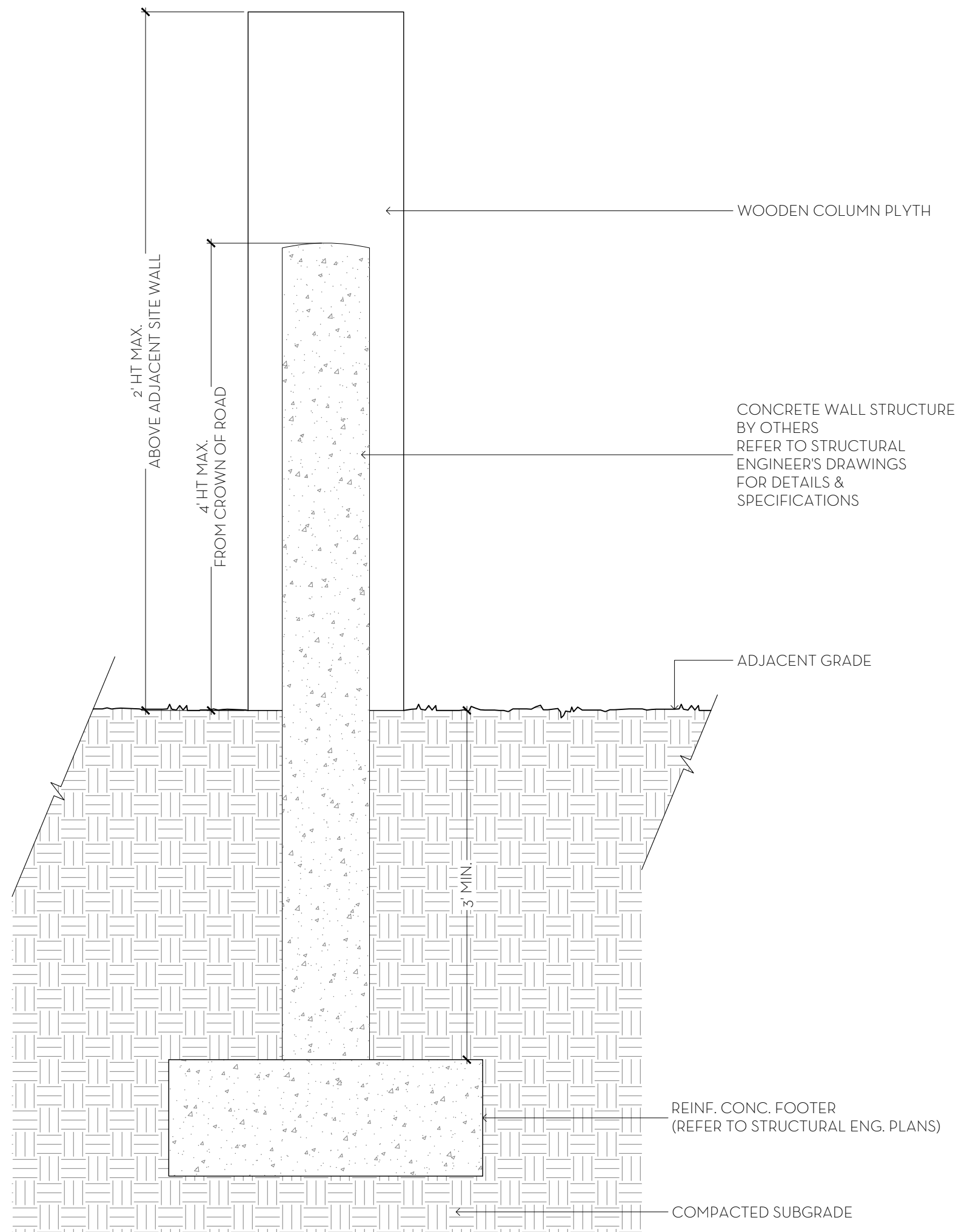


ARC-24-051

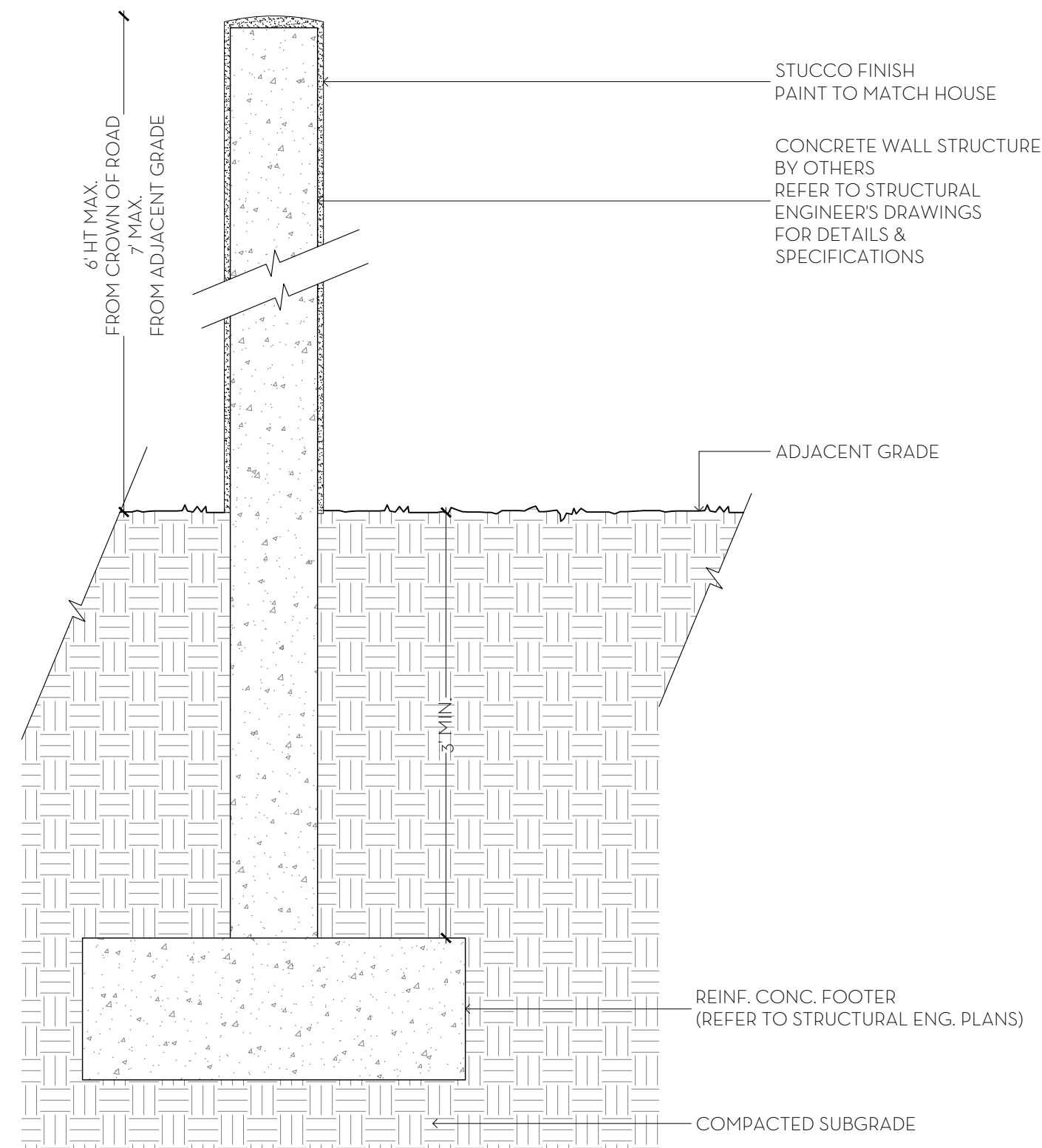




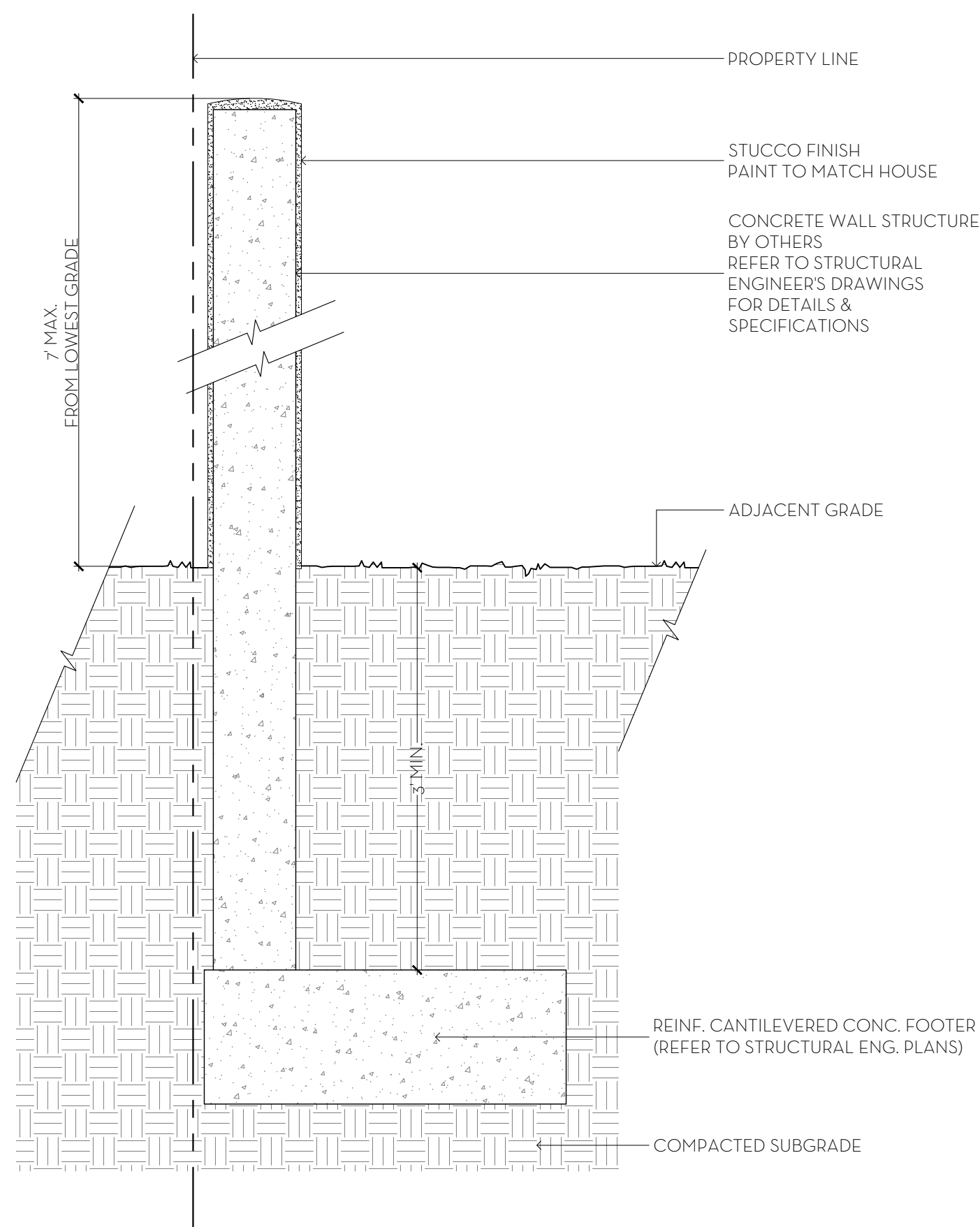
1  
D1 SCALE: 1" = 1'-0"



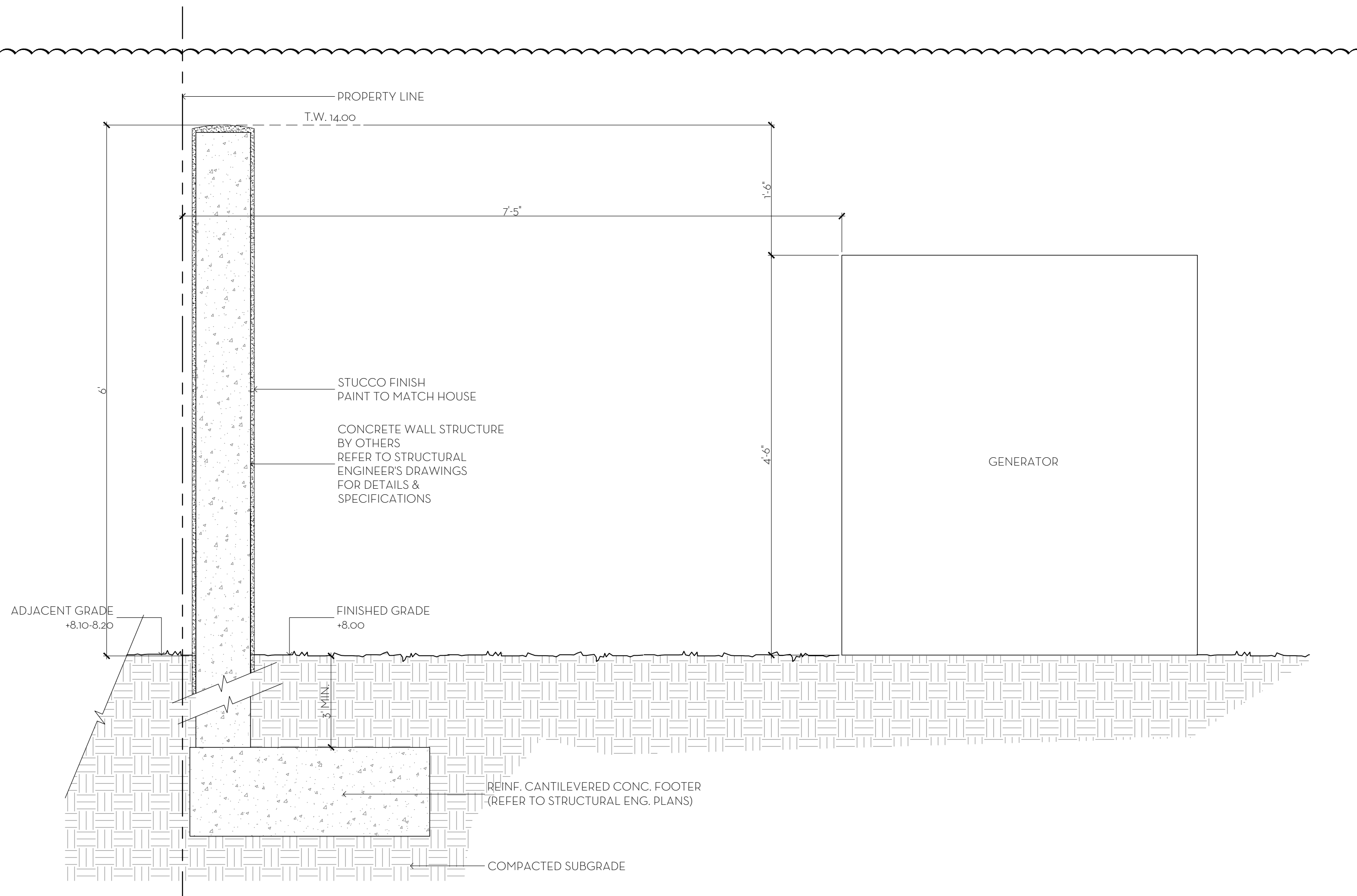
2  
D1 SCALE: 1" = 1'-0"



3  
D1 SCALE: 1" = 1'-0"



4  
D1 SCALE: 1" = 1'-0"



5  
D1 SCALE: 1" = 1'-0"

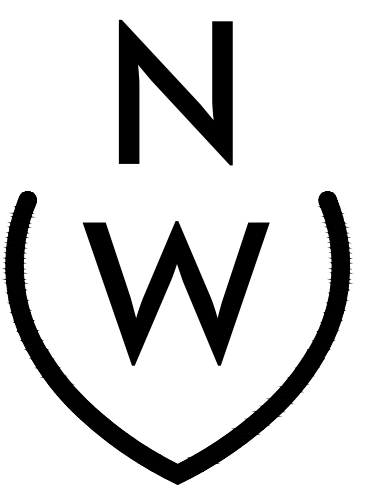
MARIO F. NIEVERA

State of Florida  
Landscape Architect  
Registration No.  
6666856

DETAILS  
1330 N. OCEAN BLVD.  
PALM BEACH, FLORIDA

SCALE: 1/8" = 1'-0"

1 APRIL 2024



NIEVERA WILLIAMS  
DESIGN

625 N. Flagler Drive  
Suite 502  
West Palm Beach, FL 33401  
P: 561-659-2820  
F: 561-659-2113

NIEVERAWILLIAMS.COM

D1

ARC-24-051



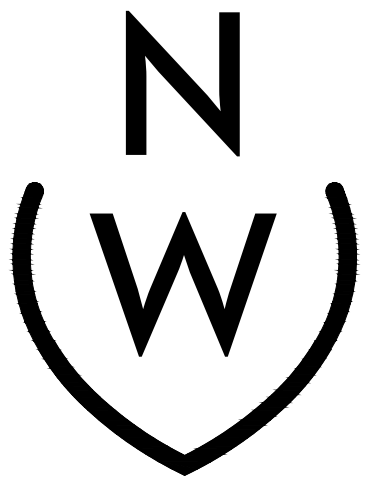
MARIO F. NIEVERA

State of Florida  
Landscape Architect  
Registration No.  
6666856

OVERALL OPEN SPACE DIAGRAM  
1330 N. OCEAN BLVD.  
PALM BEACH, FLORIDA

SCALE: 3/32" = 1'-0"

1 APRIL 2024



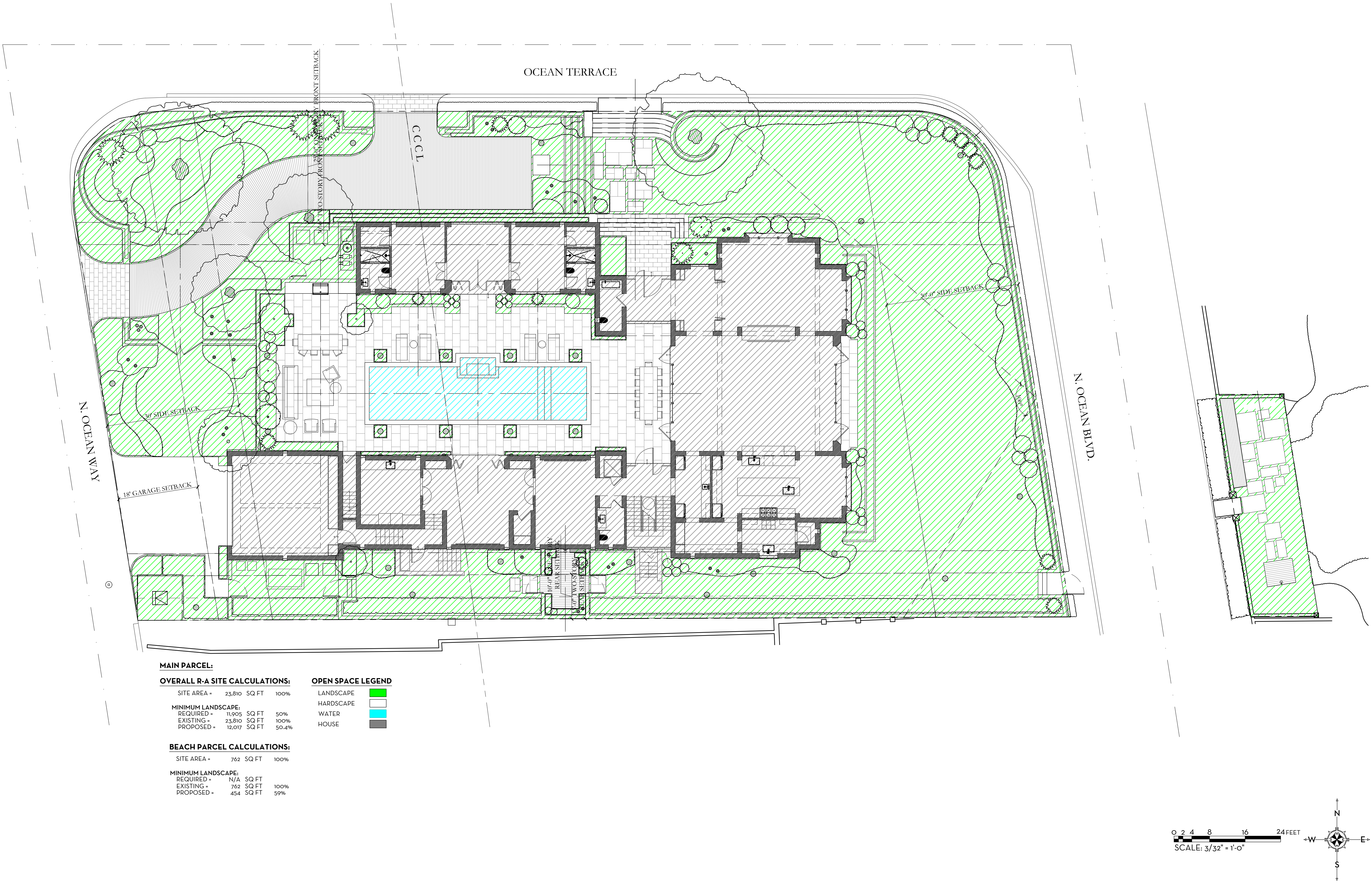
NIEVERA WILLIAMS  
DESIGN

625 N. Flagler Drive  
Suite 502  
West Palm Beach, FL 33401  
P: 561-659-2820  
F: 561-659-2113

NIEVERAWILLIAMS.COM

OS1

ARC-24-051



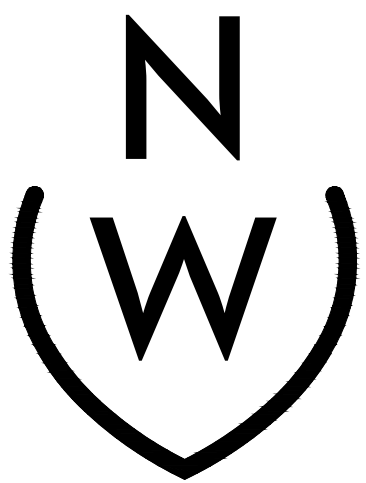


MARIO F. NIEVERA

State of Florida  
Landscape Architect  
Registration No.  
6666856

FRONT YARD OPEN SPACE DIAGRAM  
1330 N. OCEAN BLVD.  
PALM BEACH, FLORIDA

1 APRIL 2024



NIEVERA WILLIAMS  
DESIGN

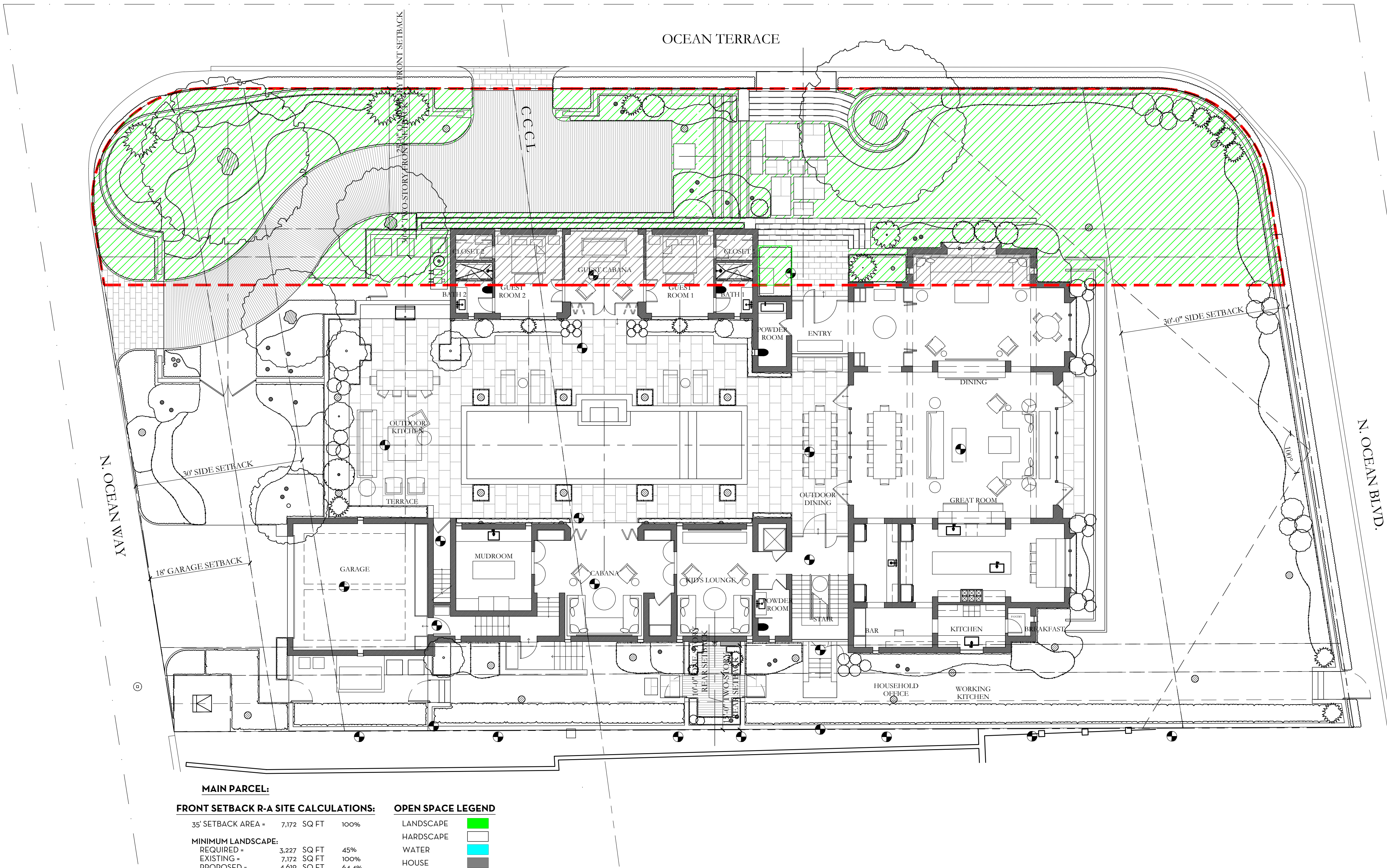
625 N. Flagler Drive  
Suite 502  
West Palm Beach, FL 33401  
P: 561-659-2820  
F: 561-659-2113

NIEVERAWILLIAMS.COM

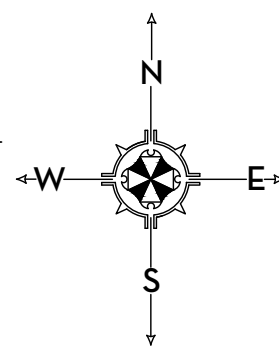
OS2

ARC-24-051

SCALE: 3/32" = 1'-0"



0 2 4 8 16 24 FEET  
SCALE: 3/32" = 1'-0"



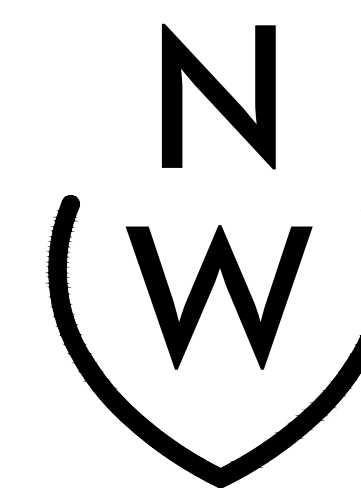


State of Florida  
Landscape Architect  
Registration No.  
6666856

DAI M BEACH EL OPIDA

SCALE:  $z/z_0 = 1.0$ 

APRIL 2024



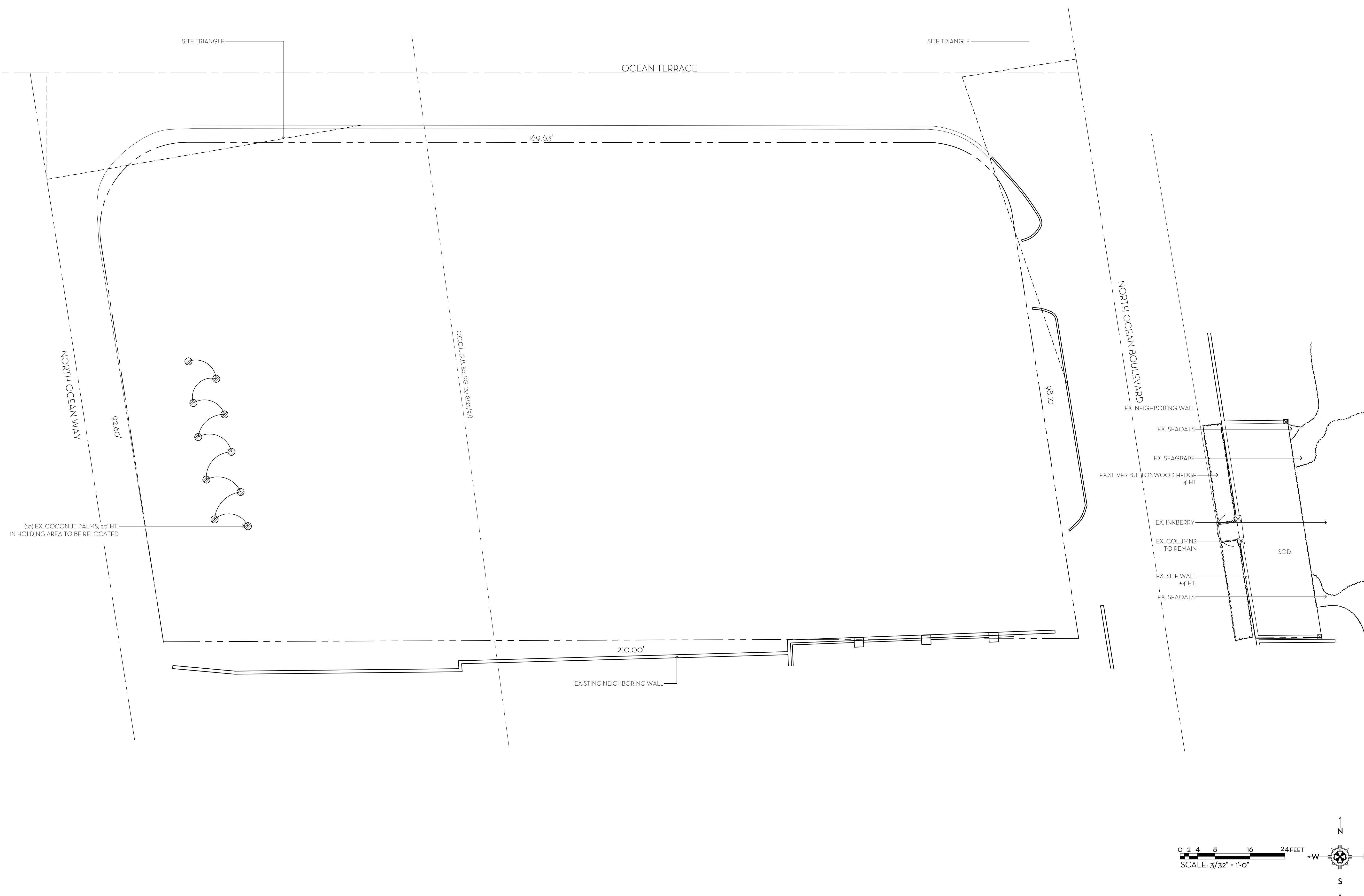
NIEVERA WILLIAMS  
DESIGN

625 N. Flagler Drive  
Suite 502  
West Palm Beach, FL 33401  
P: 561-659-2820  
F: 561-659-2113

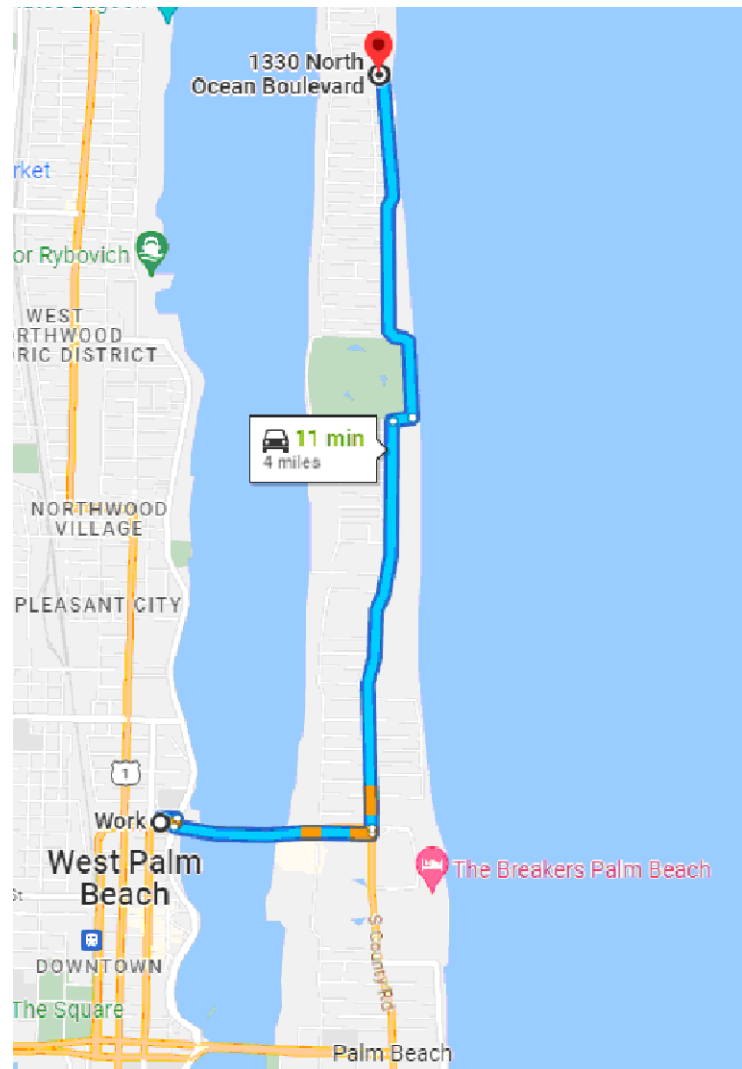
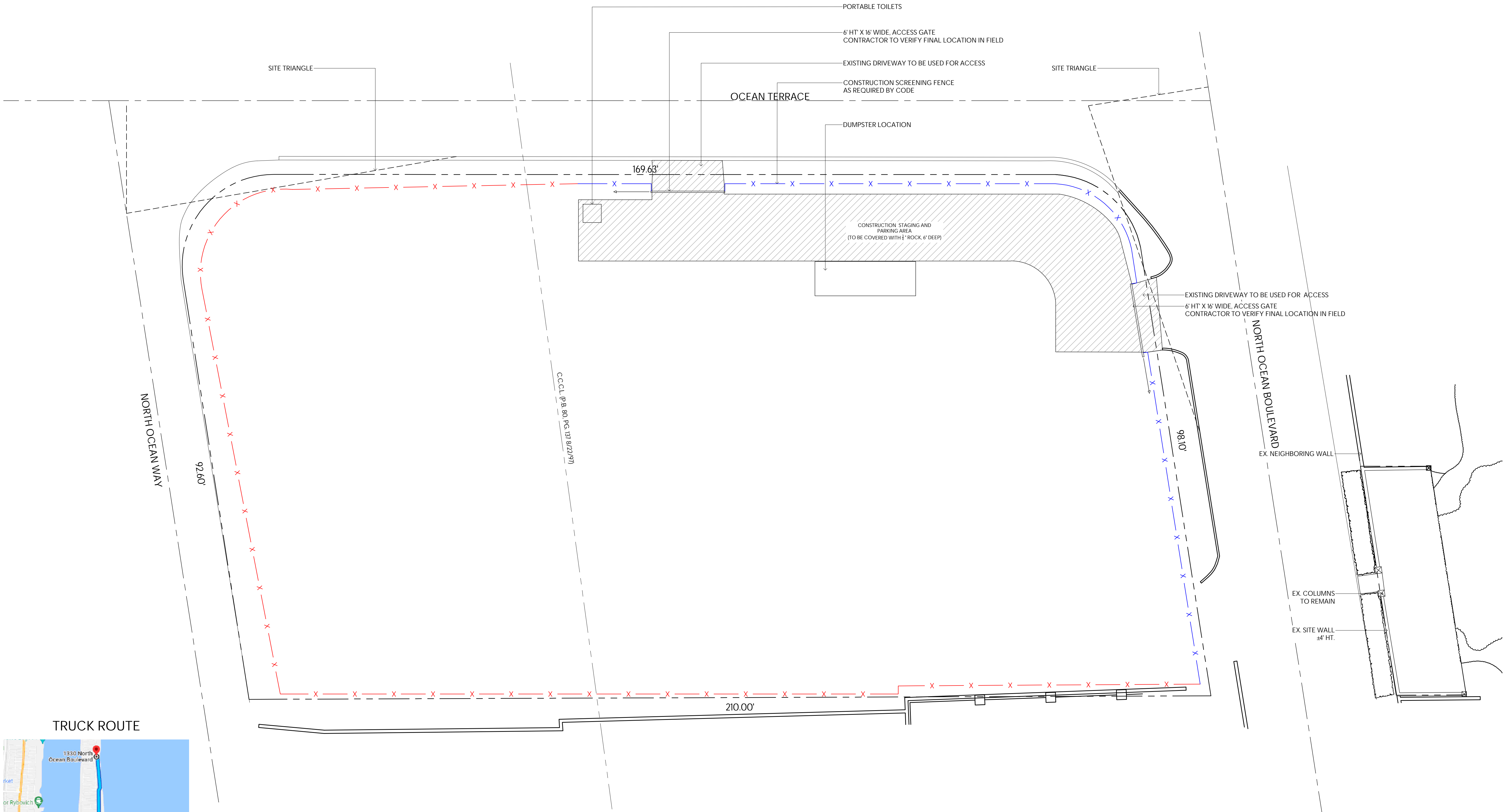
NIEVERAWILLIAMS.COM

# EX1

ARC-24-051







TRUCK ROUTE MAP & LOGISTICS

MAXIMUM TRUCK SIZE: 30'  
BEST ROUTE TO PROPERTY:  
FLAGLER MEMORIAL BRIDGE TO NORTH COUNTY RD.,  
CONTINUE TO 1330 NORTH OCEAN BLVD..

ESTIMATED NUMBER OF LARGE TRUCK TRIPS: 60

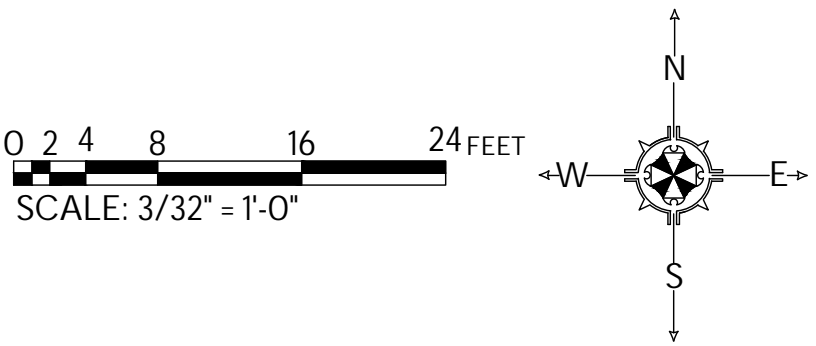
NOTE:

LOT TO BE SODDED & IRRIGATED  
WITHIN 30 DAYS POST DEMOLITION

FENCE KEY:

TYPE 1: 8 FT. TALL POST AND SCREEN FENCING

TYPE 2: 8 FT. TALL POST AND SCREEN FENCING  
WITH ADDITIONAL POSTS TO ALLOW FOR  
CURTAIN SCREENING TO BE LIFTED TO  
REQUIRED 16 FT. HEIGHT DURING  
CONSTRUCTION



MARIO F. NIEVERA

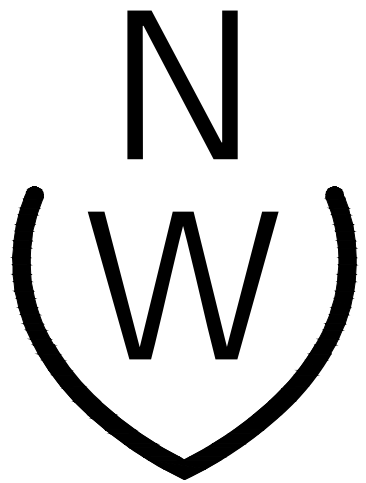
State of Florida  
Landscape Architect  
Registration No.  
6666856

CONSTRUCTION SCREENING / STAGING PLAN  
1330 N. OCEAN BLVD.

PALM BEACH, FLORIDA

1 APRIL 2024

SCALE: 3/32" = 1'-0"



NIEVERA WILLIAMS  
DESIGN

625 N. Flagler Drive  
Suite 502  
West Palm Beach, FL 33401  
P: 561-659-2820  
F: 561-659-2113

NIEVERAWILLIAMS.COM

CSP

ARC-24-051