

① MATERIAL REMOVAL - EAST FACADE ANALYSIS  
3/32" = 1'-0"

### MATERIAL REMOVAL KEYNOTE

- EXISTING BUILDING FACADE - CALCULATED
- PORTION OF EXISTING BUILDING TO BE FILLED
- PORTION OF EXISTING BUILDING WHERE MATERIAL WILL BE REMOVED
- EXTENT OF BUILDING LINK TO RESIDENTIAL COMPONENT

### EAST FACADE CALCULATION

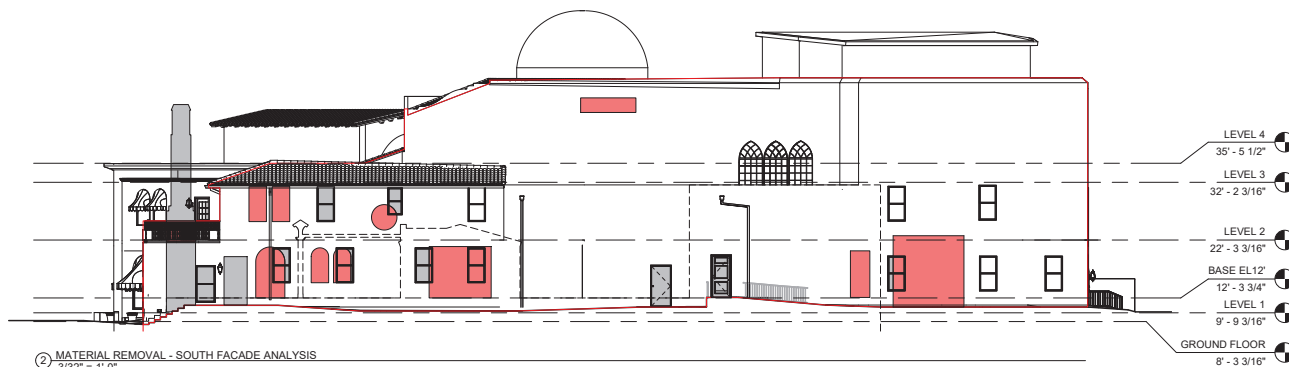
TOTAL FACADE SQUARE FOOTAGE:	5,516 SQFT
@ 50%	2,758 SQFT
ESTIMATED SQUARE FOOTAGE OF MATERIAL BEING REMOVED:	533 SQFT
ESTIMATED SQUARE FOOTAGE BEING FILLED:	200 SQFT
TOTAL PERCENTAGE OF MATERIAL REVISION	733 SQFT / 5,516 SQFT - 13.2%

### SOUTH FACADE CALCULATION

TOTAL FACADE SQUARE FOOTAGE:	5,540 SQFT
@ 50%	2,770 SQFT
ESTIMATED SQUARE FOOTAGE OF MATERIAL BEING REMOVED:	438 SQFT
ESTIMATED SQUARE FOOTAGE BEING FILLED:	290 SQFT
TOTAL PERCENTAGE OF MATERIAL REVISION	728 SQFT / 5,540 SQFT - 13.1%

### NORTH FACADE (THEATER ENTRY) CALCULATION

TOTAL FACADE SQUARE FOOTAGE:	6,632 SQFT
@ 50%	3,316 SQFT
ESTIMATED SQUARE FOOTAGE OF MATERIAL BEING REMOVED:	288 SQFT
ESTIMATED SQUARE FOOTAGE BEING FILLED:	000 SQFT
TOTAL PERCENTAGE OF MATERIAL REVISION	288 SQFT / 6,632 SQFT - 4.3 %



② MATERIAL REMOVAL - SOUTH FACADE ANALYSIS  
3/32" = 1'-0"



③ MATERIAL REMOVAL - NORTH-WEST FACADE ANALYSIS (THEATER ENTRY)  
3/32" = 1'-0"

Scale: 3/32" = 1'-0"  
Note: When printed on 11 x 17 paper scale is half