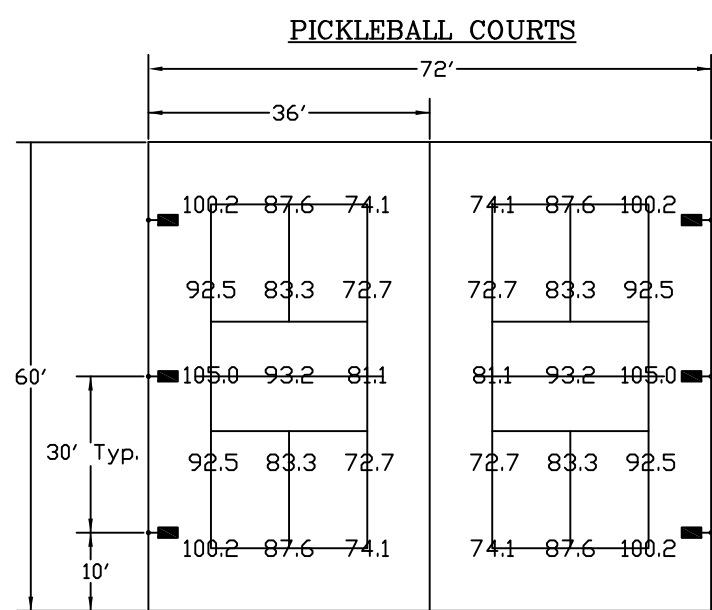
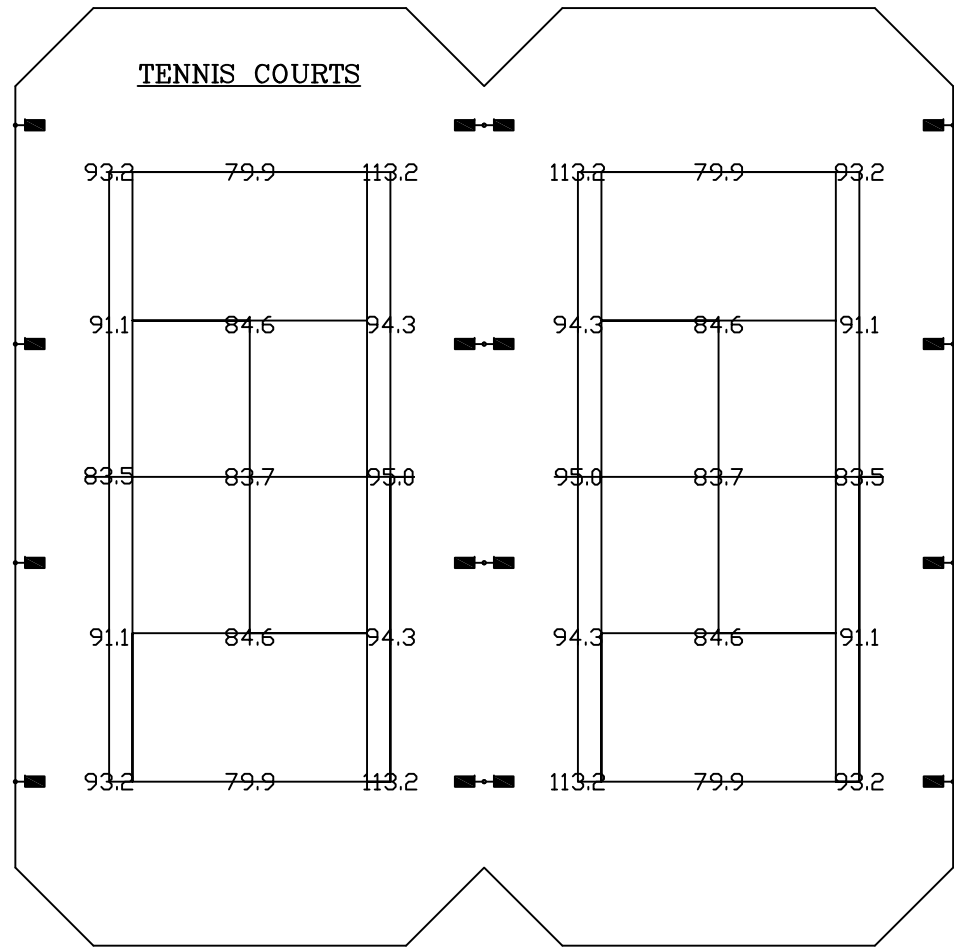


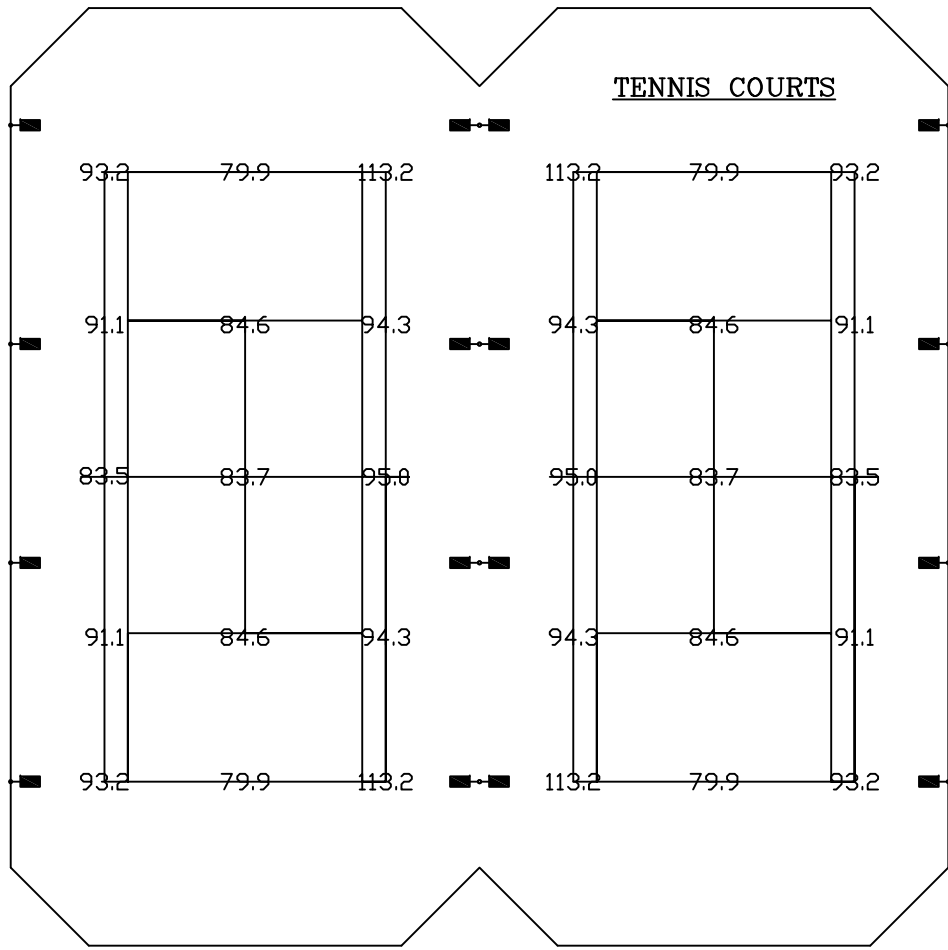
0.8 0.1
0.9 0.1
1.0 0.1
1.1 0.1
1.3 0.1
1.1 0.1
1.0 0.1
0.9 0.1
0.8 0.0
0.8 0.0
0.7 0.0
0.7 0.0
0.6 0.0
0.6 0.0



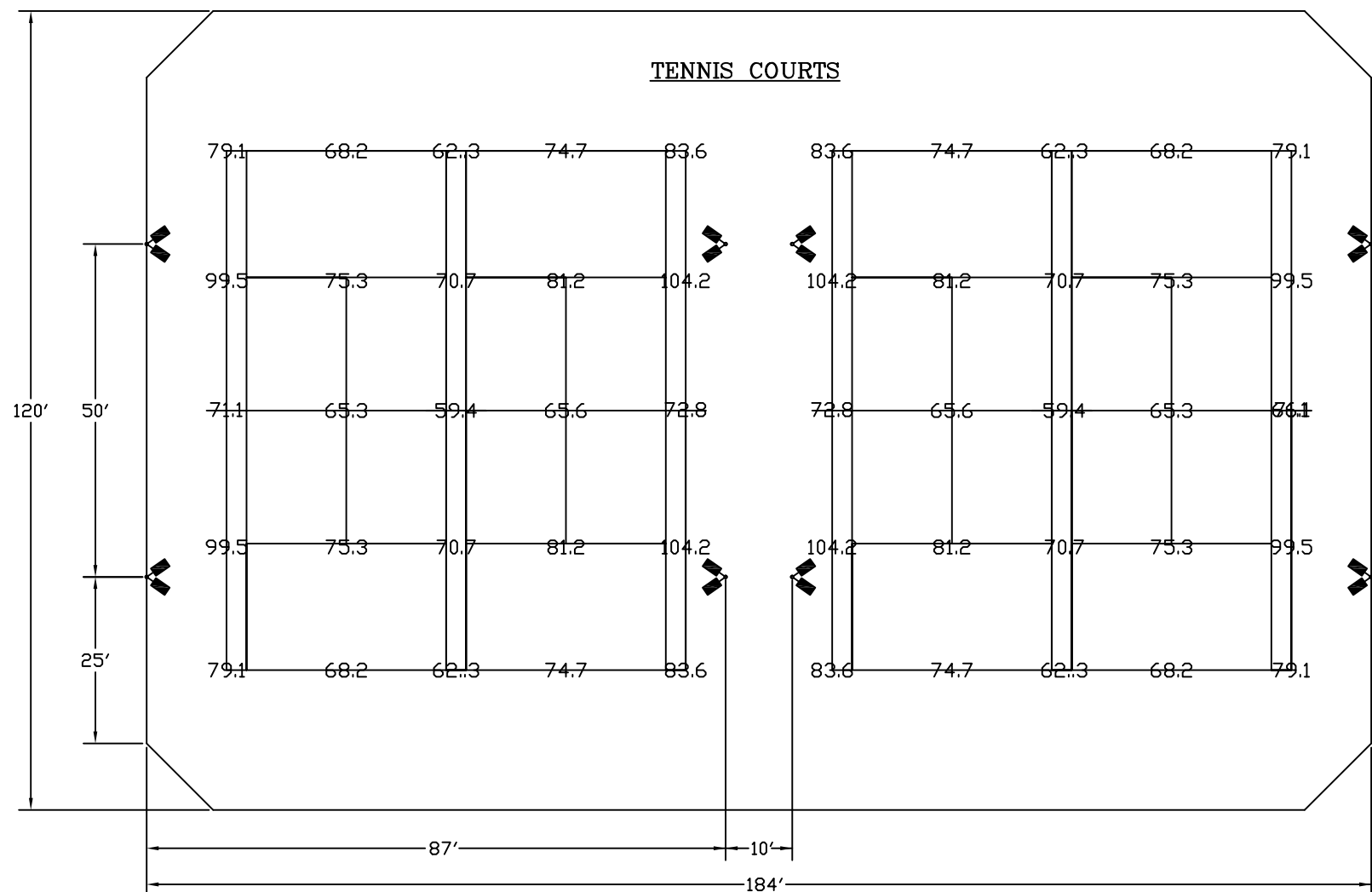
0.8 0.1
0.9 0.1
1.0 0.1
1.1 0.1
1.3 0.1
1.1 0.1
1.0 0.1
0.9 0.1
0.8 0.0
0.8 0.0
0.7 0.0
0.7 0.0
0.6 0.0
0.6 0.0



0.8 0.1
0.9 0.1
1.0 0.1
1.1 0.1
1.3 0.1
1.1 0.1
1.0 0.1
0.9 0.1
0.8 0.0
0.8 0.0
0.7 0.0
0.7 0.0
0.6 0.0
0.6 0.0

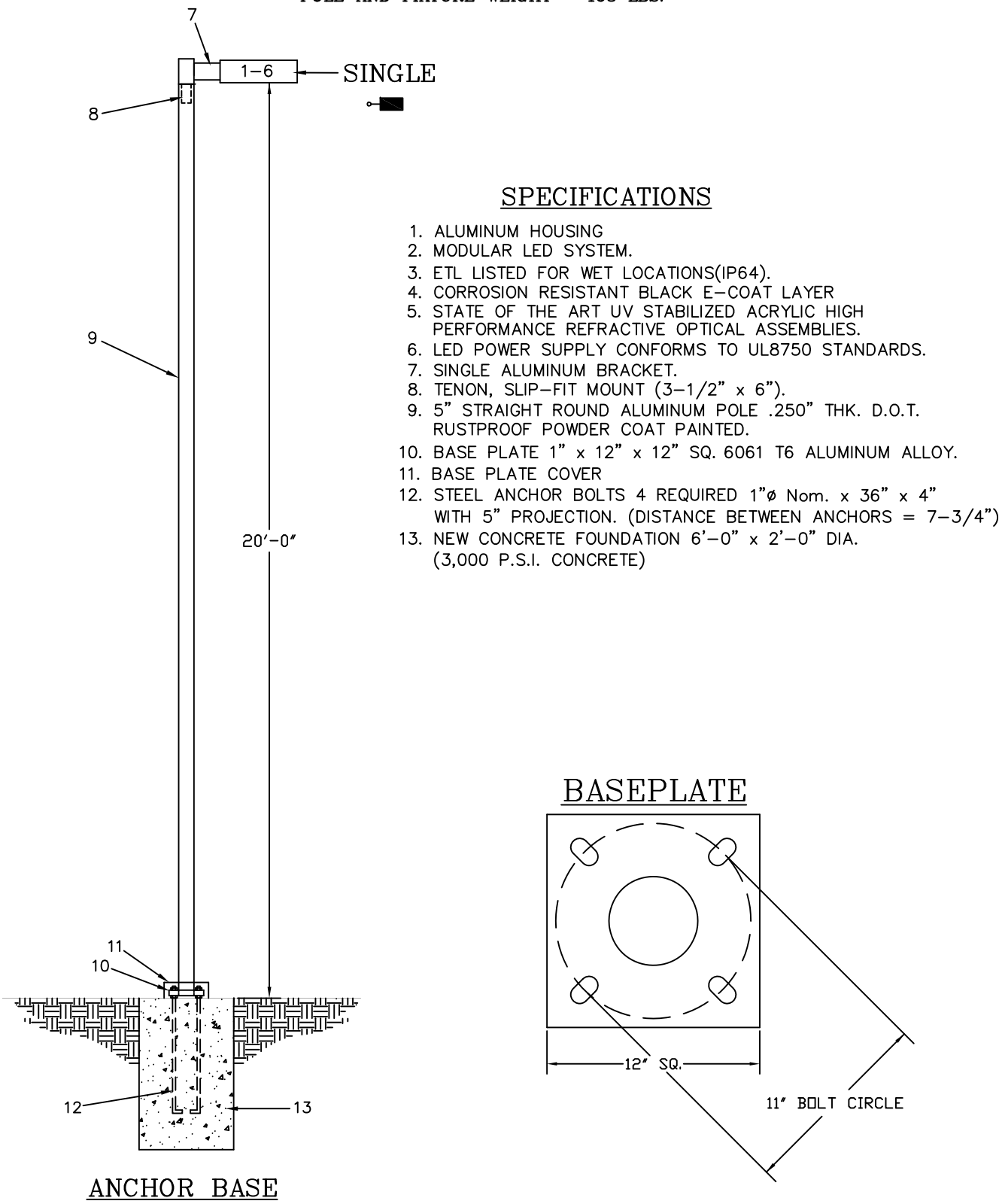


0.8 0.1
0.9 0.1
1.0 0.1
1.1 0.1
1.3 0.1
1.1 0.1
1.0 0.1
0.9 0.1
0.8 0.0
0.8 0.0
0.7 0.0
0.7 0.0
0.6 0.0
0.6 0.0



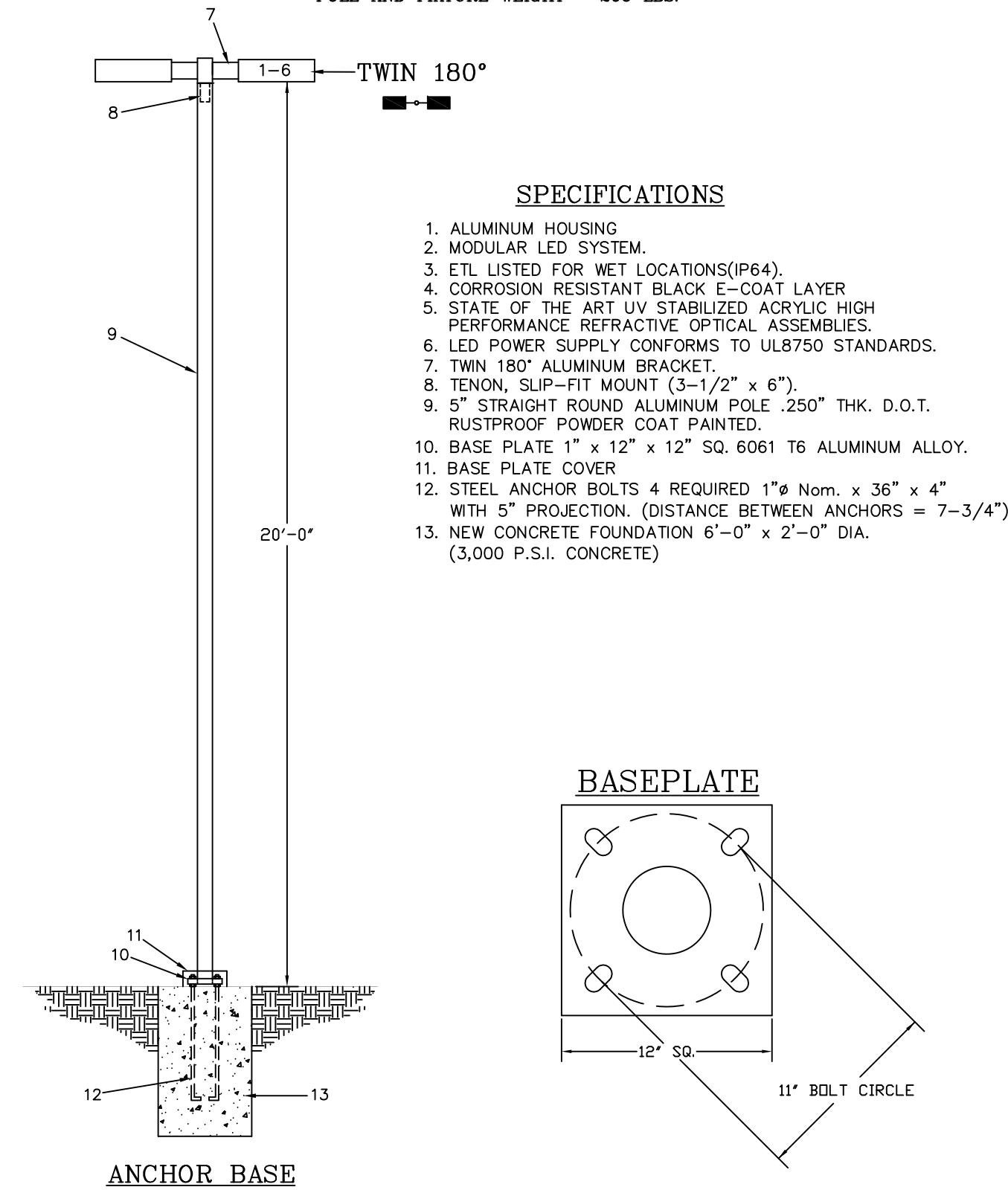
STRUCTURAL SUPPORT FOR SINGLE LMI-TLL SERIES LED LUMINAIRE

DESIGN WIND LOAD = 170 M.P.H. Exp. "C"
RISK CAT. II F.B.C. 2020
SINGLE HSG FIXTURE EPA (SQ. FT.) = 0.9
POLE WEIGHT = 120 LBS.
(6061 T6 ALUMINUM ALLOY)
FIXTURE WEIGHT = 43 LBS.
POLE AND FIXTURE WEIGHT = 163 LBS.



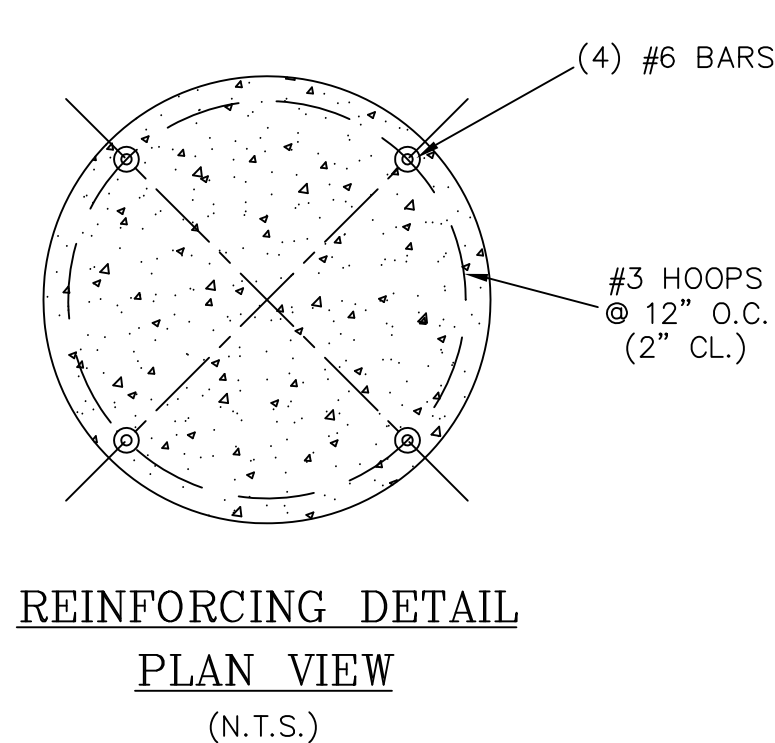
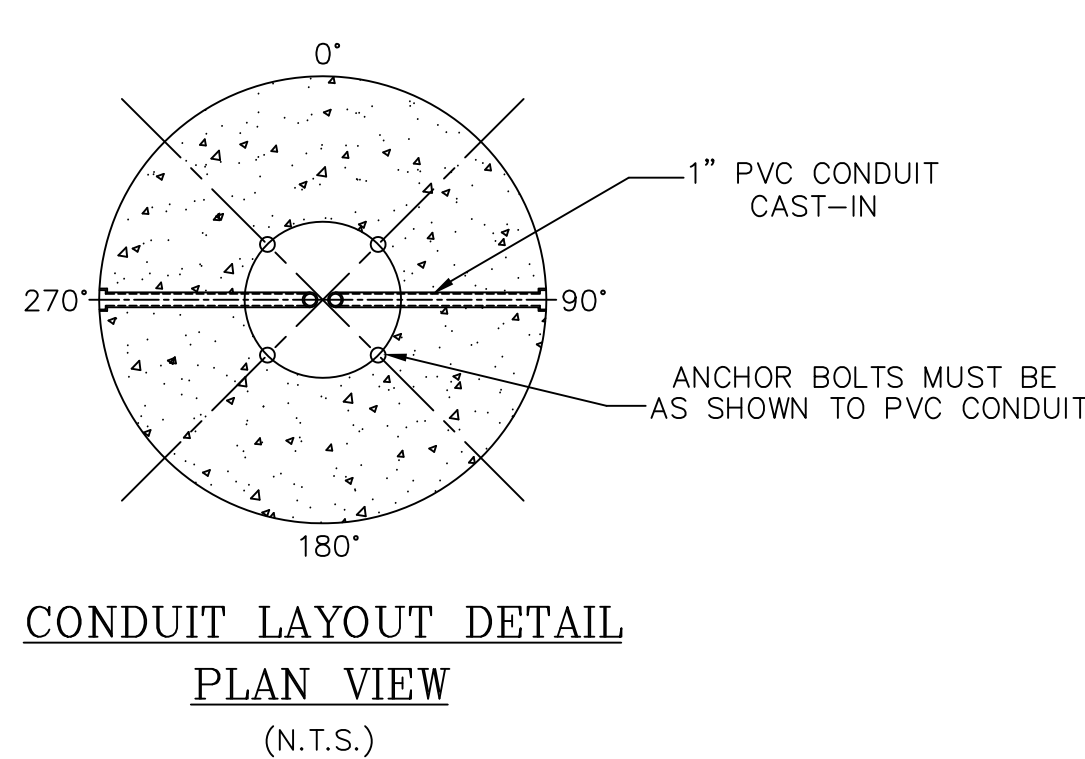
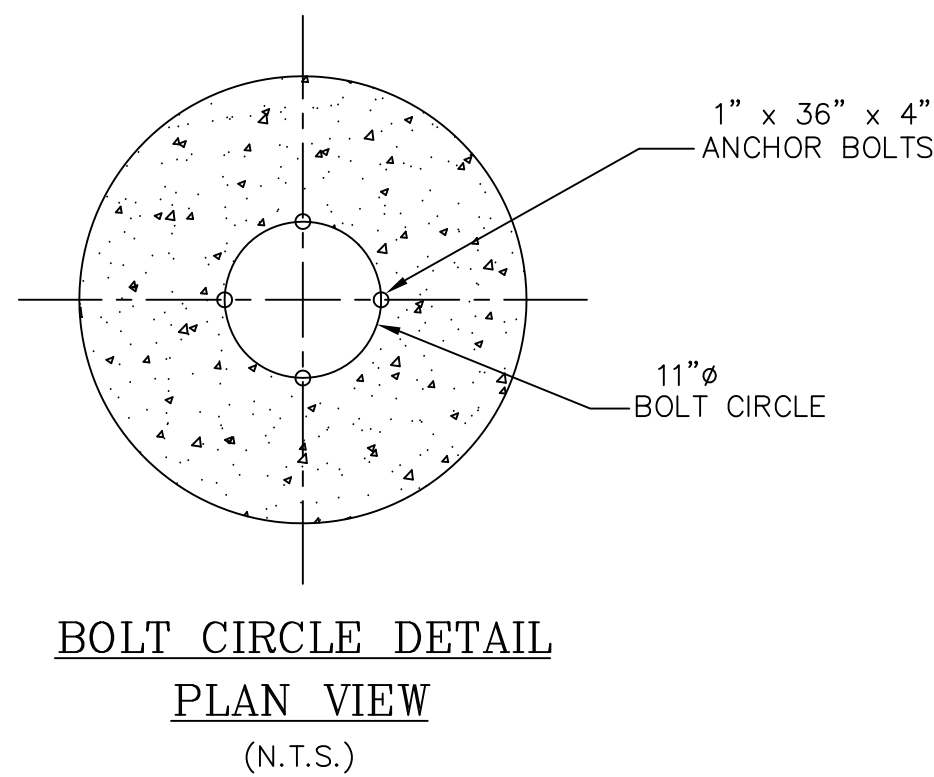
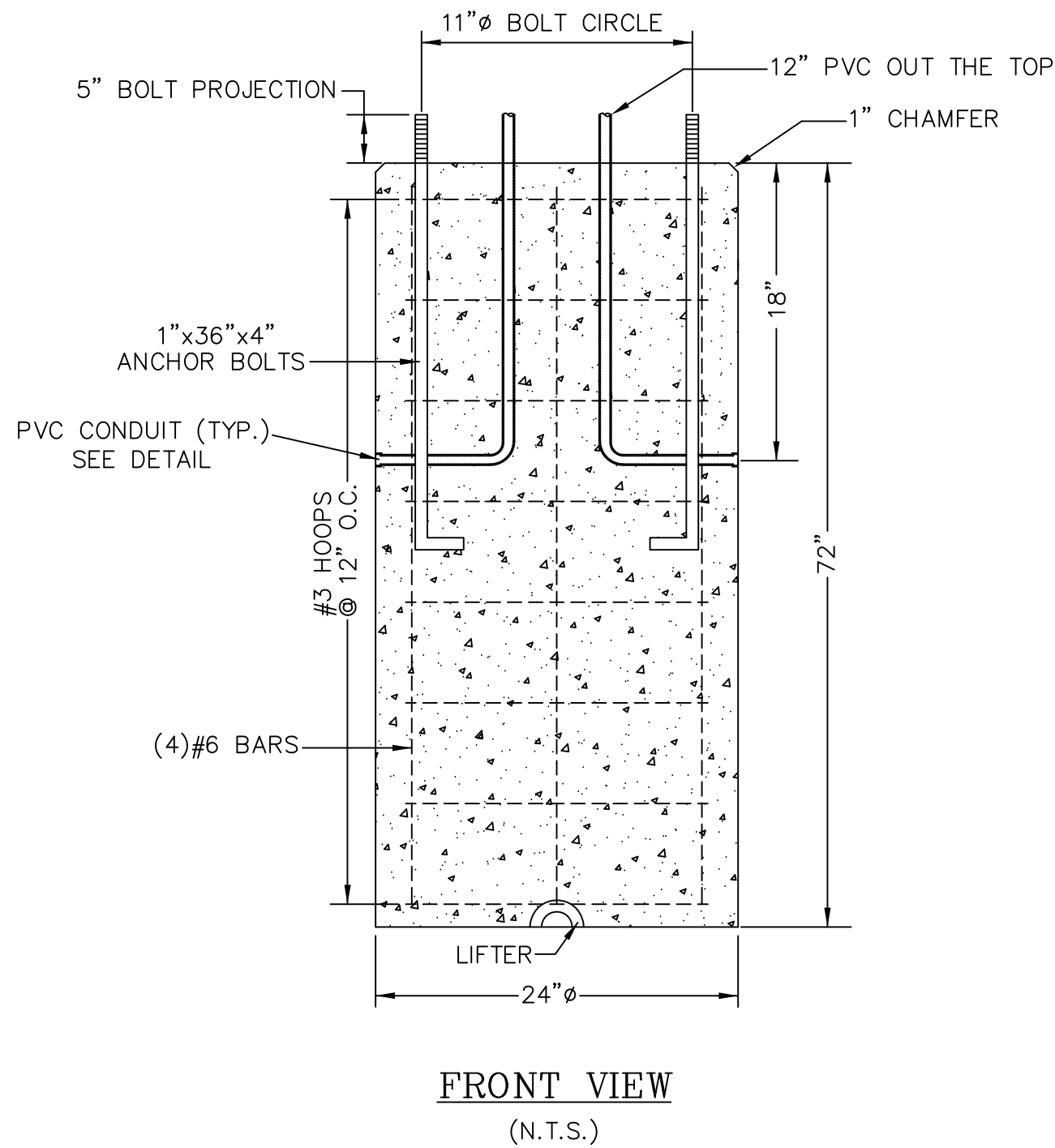
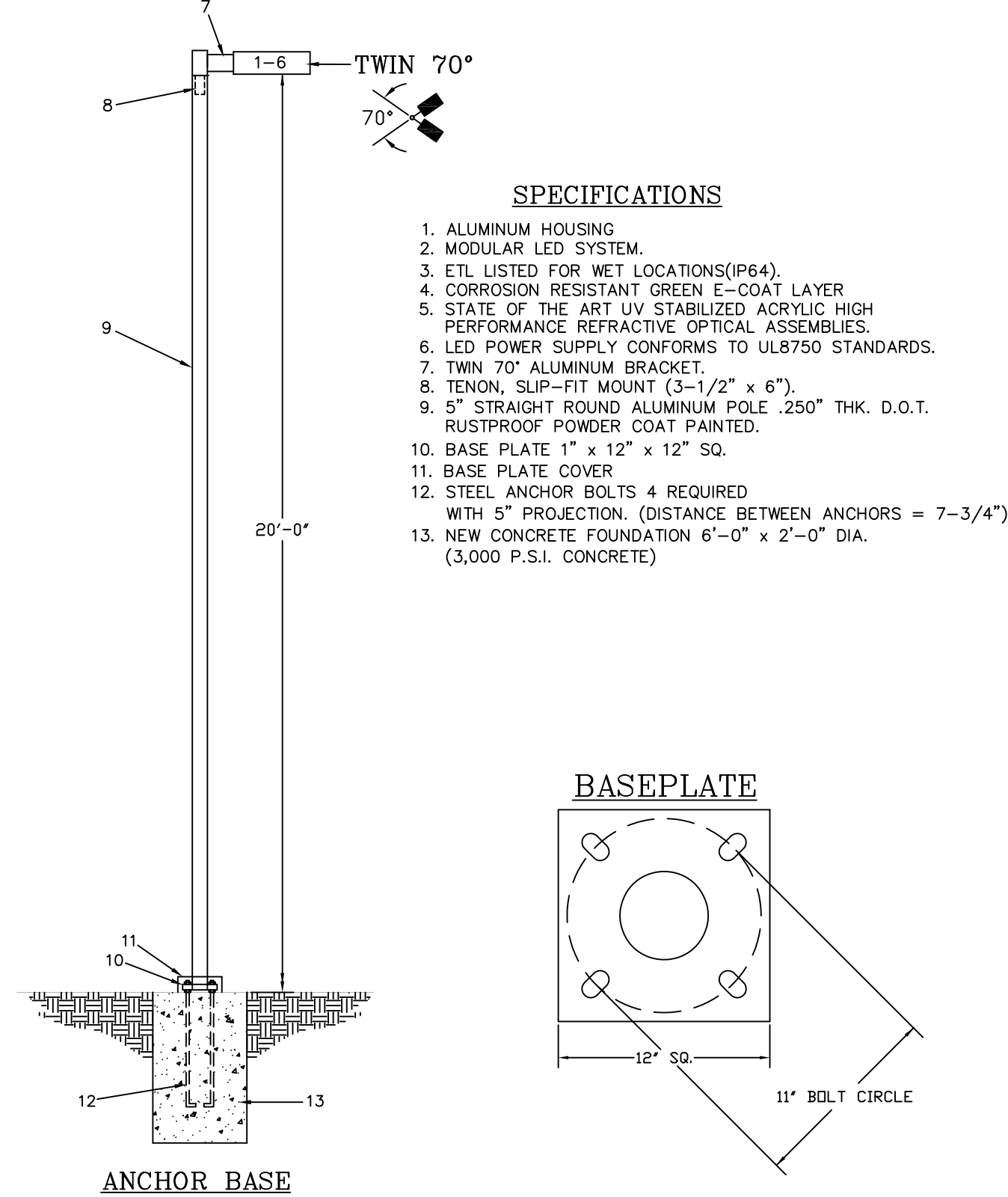
STRUCTURAL SUPPORT FOR TWIN 180° LMI-TLL SERIES LED LUMINAIRE

DESIGN WIND LOAD = 170 M.P.H. Exp. "C"
RISK CAT. II F.B.C. 2020
TWIN HSG FIXTURE EPA (SQ. FT.) = 1.8
POLE WEIGHT = 120 LBS.
(6061 T6 ALUMINUM ALLOY)
FIXTURE WEIGHT = 43 LBS.
POLE AND FIXTURE WEIGHT = 206 LBS.



STRUCTURAL SUPPORT FOR TWIN 70° LMI-TLL SERIES LED LUMINAIRE

DESIGN WIND LOAD = 170 M.P.H. Exp. "C"
RISK CAT. II F.B.C. 2020
SINGLE HSG FIXTURE EPA (SQ. FT.) = 0.9
POLE WEIGHT = 120 LBS.
(6061 T6 ALUMINUM ALLOY)
FIXTURE WEIGHT = 43 LBS.
POLE AND FIXTURE WEIGHT = 206 LBS.



Lite Maintenance Inc.
2071 N.W. 29th Street
Oakland Park, FL. 33311
Tel. 954-486-0111
Fax 954-486-0440
Email: litemaintenance@yahoo.com

DRAWN: DWG

DATE: 03-18-23

SCALE: N.T.S.

DATE:

DRAWN:

The Breakers of Palm Beach
1 South County Road
Palm Beach, Florida 33480

REV. #

REVISION DESCRIPTION:

LMI-TLL SERIES

Large Area/Tennis Light

DATE: _____ LOCATION: _____
TYPE: _____ PROJECT: _____
CONSTRUCTION: _____

Description

The LMI-TLL series is a specification-grade outdoor lighting fixture designed for preferred aesthetic appeal, low cost of ownership and optimal task performance. Proprietary optical designs have been developed specifically for high visibility tennis court lighting. Industry leading efficacy maintains the lowest energy costs possible with an appearance complementary to residential or club level facilities.



Construction

- Durable die-cast aluminum housing
- Vertical fins to optimize thermal management
- Chip and fade-resistant power-coat finish resists chipping, fading, corrosion and rust

Optics/LEDs

- Efficacy > 140 lumens per watt
- Proprietary optics engineered for 4-pole (AT4) or 6-pole (AT6) tennis court installations
- IES types 3, 4 and 5 for area lighting applications
- UV stabilized, high-efficiency polycarbonate lens
- 3000, 4000 and 5000 Kelvin color temperatures
- > 70 CRI

Electrical

- 0-10V Dimming standard
- Universal voltage 120-277 or 347-480 VAC 50/60 Hz
- Surge protection - 10 kVA
- Power factor > 90%
- Total harmonic distortion (THD) < 20%
- Wattage 450W (65,500 lm), 540W (75,000 lm)

Mounting/Installation

- Slip-fitter mast arm mount (MAF) standard for ease of installation on 2-3/8" O.D. tenon
- Optional 6" straight arm (A6) compatible with 4-5" round or square poles

Options/Accessories

- Industrial grade 7-pin twistlock photocell receptacle
- Field installable backlight shield

Warranty

- 5-year limited warranty

Ratings and Certifications

- DLC PREMIUM qualified (Consult DLC QPL for specific configurations at www.designlights.org)
- UL listed to UL1598 & 8750 for Wet Locations
- IP65 Rated
- ANSI C136 3G Vibration rated
- -20° to 40°C Ambient operating temperature



Ordering Information

EXAMPLE: LMI-TLL-65-AT4-4K-U-BK

Series	Output (lumens)	Optic	CCT	Voltage	Housing Color*	Mount	Options
LMI-TLL Large Area/ Tennis Light	65 - 65,500 lm 75 - 75,000 lm	Asymmetric Tennis AT4 - 4-Pole Court AT6 - 6-Pole Court	3K - 3000K 4K - 4000K 5K - 5000K	U - 120-277V HV - 347-480V	BK - Black BR - Bronze FG - Dark Green SV - Silver WH - White	A6 - 6" Straight Arm (4-5 Poles) MAF - Mast Arm Fitter (2-3/8" O.D.)	7PR - 7-pin Twistlock Receptacle

*Consult factory for alternative finishes.

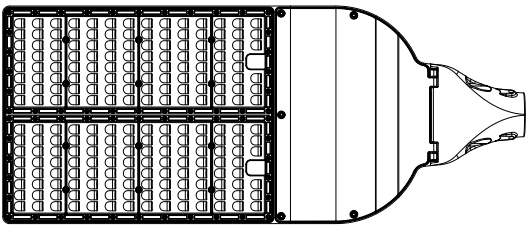
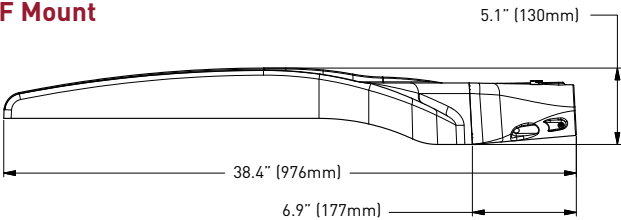
Specs at a Glance

Model System Wattage Distribution CCT (K) Lumens (LM) Efficacy (LPW) Standard Lifetime CRI Input Voltage Operating Temp. Certifications	LMI-TLL-65						LMI-TLL-75					
	450W						540W					
	AT4			AT6			AT4			AT6		
	3000K	4000K	5000K	3000K	4000K	5000K	3000K	4000K	5000K	3000K	4000K	5000K
	61984	63335	63767	62720	64616	64638	71659	73824	73850	72509	74701	74727
	137	141	141	139	143	143	132	136	136	133	137	137
	L70 >100khrs											
	>70											
	120-277V, 347-480V											
	-30° to 40°C											
	DLC PREMIUM, UL, IP65, Wet Location, 3G Vibration											

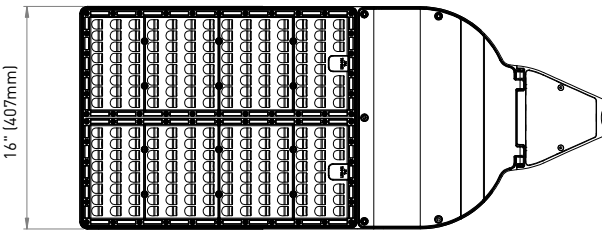
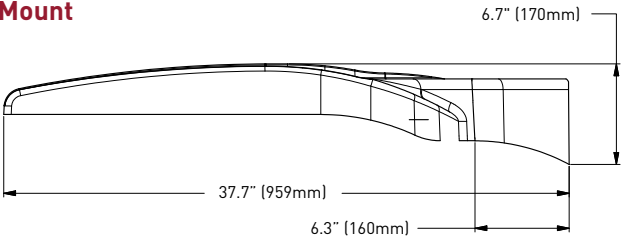
Dimensions

LMI-TLL Series
Weight: 43 lbs
EPA = 0.90 Sq. Ft.


MAF Mount



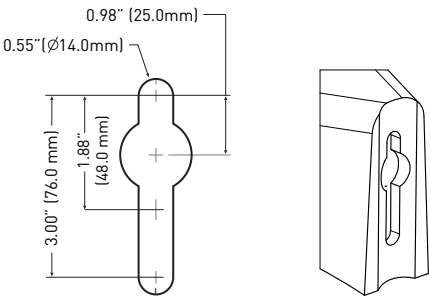
A6 Mount



Mounting/ Accessories

	Description
	MAF Mount 2.375" O.D. Arm, 5.0" Insertion
	A6 Mount 4-5" Square or Round Poles

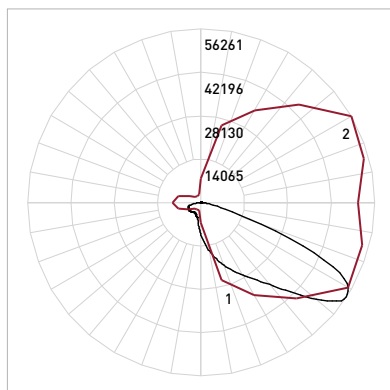
Hole Pattern For A6 Mount



A6 Mount fits on
4-5" Square or
Round pole

Photometry

Polar Graph - LMI-TLL-65-AT4



Horizontal ISO Foot Candle

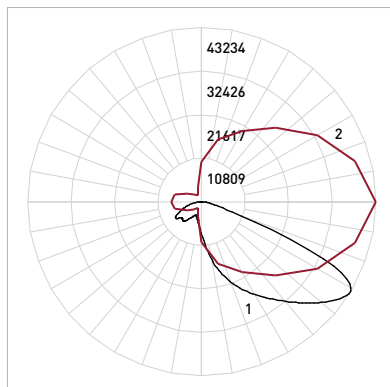


Luminaire Lumens - 65292
BUG Rating - B4-U0-G4
Color Temperature - 5000K CCT

Mounting Height = 20 Foot

Additional photometrics available online.

Polar Graph - LMI-TLL-65-AT6



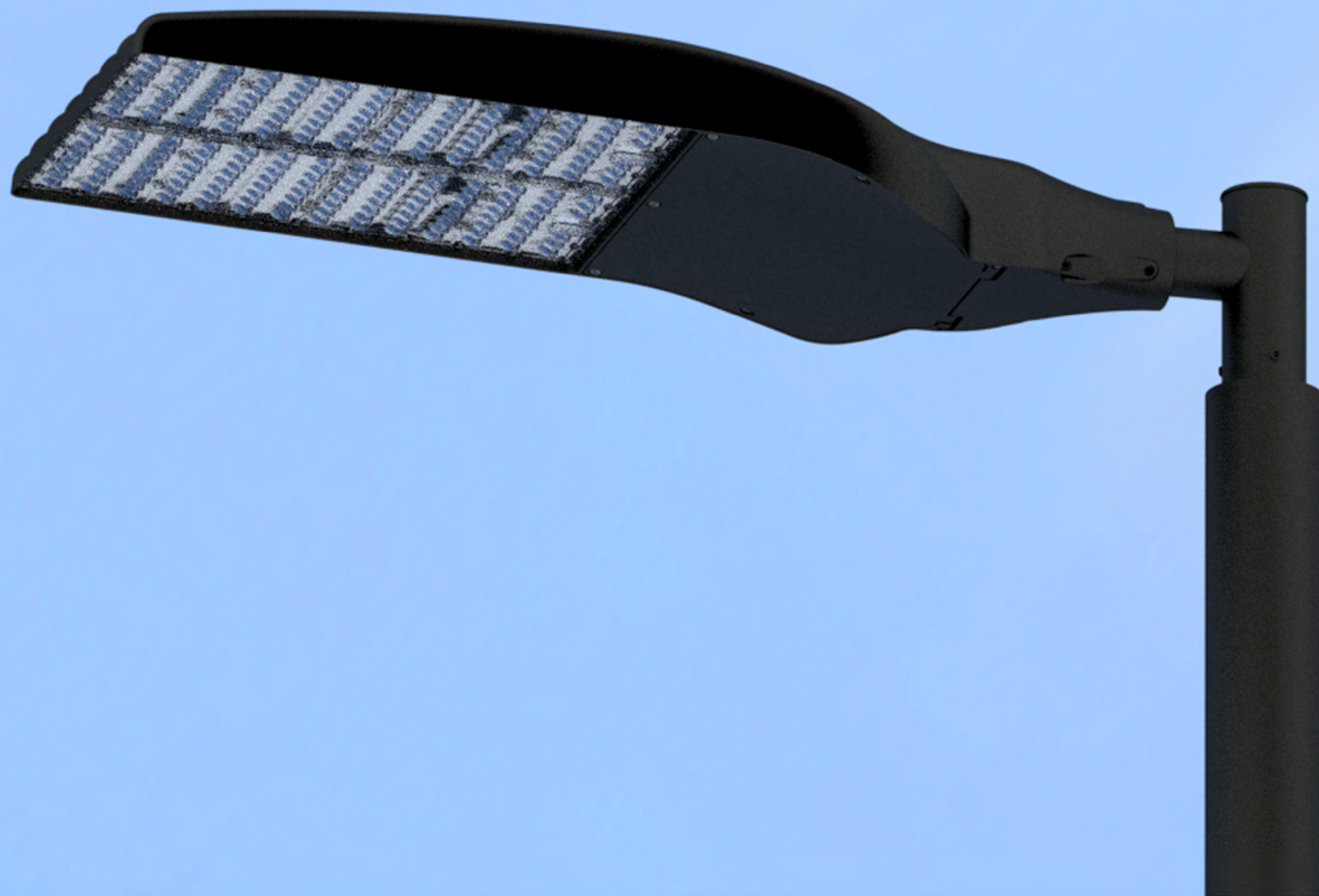
Horizontal ISO Foot Candle



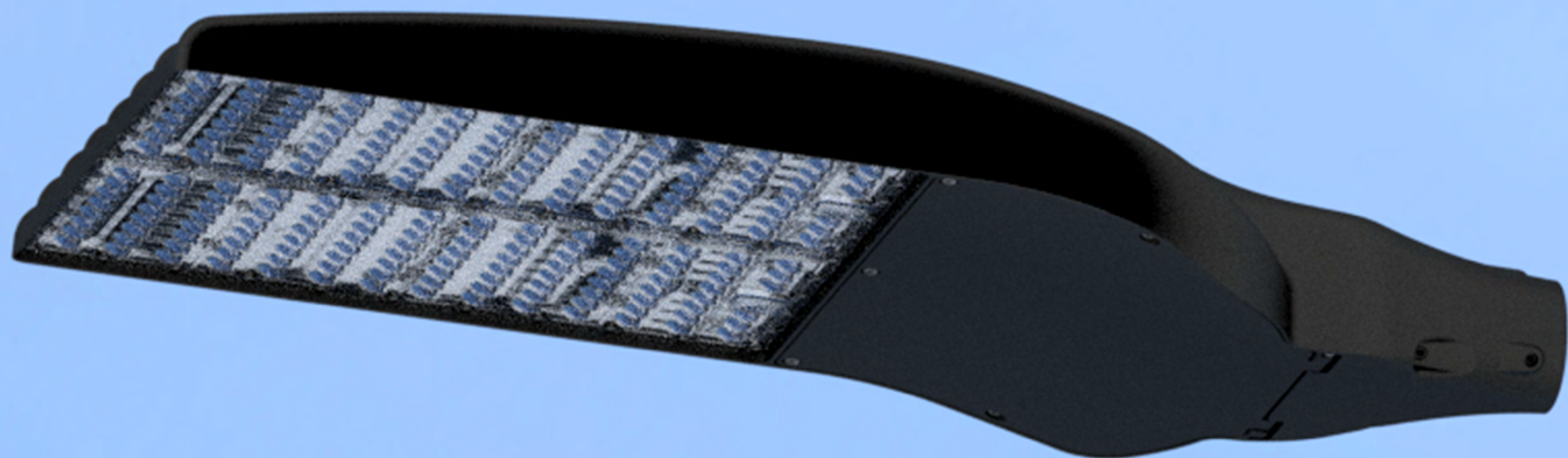
Luminaire Lumens - 66378
BUG Rating - B4-U0-G4
Color Temperature - 5000K CCT

Mounting Height = 20 Foot

Additional photometrics available online.



2-3/8" Mast Arm Mount



2-3/8" Mast Arm Mount



2-3/8" Mast Arm Mount – Twin



2-3/8" Mast Arm Mount – Twin



2-3/8" Mast Arm Mount – Quad Spoke



2-3/8" Mast Arm Mount – Quad Spoke

Town of Palm Beach Exterior Lighting Requirements

1. Cut sheets depicting lighting details, and a site/plot plan showing lighting locations must be submitted.
2. No light bulb or source of illumination shall be visible while standing at or outside of the property line. Wall sconces or column top fixtures are excluded. The light bulbs in eave fixtures must be shielded so that the lamp is not visible from off the property line. Decorative wall sconces that are visible from the street are allowed but shall be lamped with bulbs not exceeding 15 watts per bulb, and not more than 4 bulbs per fixture.
3. No high-pressure or low-pressure sodium light bulbs can be used for landscape lighting.
4. Any bulbs or sources of illumination in fixtures mounted in trees or above eye level on structures shall not be visible off the property. All down lighting shall not exceed 2 ft. candles on residential property and 8 ft. candles on commercial properties as measured at ground level directly below the source of illumination. Down lighting scheme must be approved by Town Staff through ARCOM or LPC Administrative Approval. The maximum wattage per acre for down lighting schemes shall not exceed 3,750 watts; however, shall not be counted as contributing to the total landscape (vertical illumination quantity) lighting system. The use of baffling, shielding techniques, internal hex louvers and screening should reduce the total output to 3,000 watts. Baffling, shielding, internal hex louvers and screening is encouraged.
5. Maximum cumulative wattage of light fixtures using mercury vapor and/or fluorescent light bulbs supplied at 120 volts, 24 volts and 12 volts, per acre is 5,000 watts.
6. Maximum cumulative wattage of light fixtures using mercury vapor and/or florescent light bulbs supplied at 120 volts, 220 volts, 208 volts, and 277 volts, per acre is 5,000 watts. The use of baffling, shielding techniques, internal hex louvers and screening is encouraged.
7. Maximum cumulative wattage of light fixtures using metal halide light bulbs supplied at 120 volts, 220 volts, 208 volts and 277 volts, per acre is 2,000.
8. Maximum number of landscape lighting fixtures per acre is 150 regardless of wattage.
9. Illumination on the elevation of a residence or commercial building is discouraged unless architectural features and anchor points are the purpose of illumination. Visible security flood lighting is prohibited unless approved directly by ARCOM.
10. No more than one half foot-candle of light may be reflected off or spill off of a property. Furthermore, lighting shall not be directed or aimed in such a manner as to create a nuisance or glare to any abutting properties or to any passers-by (either by foot or in a moving vehicle). Violation of any one of these requirements shall be subject to action by the Code Enforcement Board.
11. No light shall be unshielded where the lighting element is visible in any fashion, i.e. wall packs and any approved security fixtures. Any light that egresses its property of installation must be shielded and directed to reduce light trespass to the satisfaction of ARCOM, the Planning Administrator or assigned staff.
12. Red, yellow, blue, and green incandescent light bulbs that are visible from the street or public right-of-way are prohibited except during Town approved holiday intervals.
13. Mixture of Kelvin ratings by lamp types is discouraged where the difference is more than 25%, i.e. 5,500 Kelvin and 4,100 Kelvin is permissible. Exceptions may be allowed in circumstances such as where incandescent lamps are used to illuminate sculpture or fountains.
14. Light fixtures mounted on the ground, unless decorative types, path lights, etc., are to be hidden in landscape material, and not visible from outside the property line.

I verify that the proposed design meets all conditions listed above.

Property Address 1 South County Rd, Palm Beach, FL 33480

LITE MAINTENANCE INC

Name - please print

Signature

3/20/2023

Date

954-398-4807

Phone



ALEXANDRA JACOB
Notary Public, State of Florida
Commission# GG 340459
My comm. expires June 21, 2023

Seal of Design
Professional
(if applicable)

Signature & Stamp of Notary (if Design Professional is not used)

My Commission Expires: June 21, 2023

form revised 2-6-17