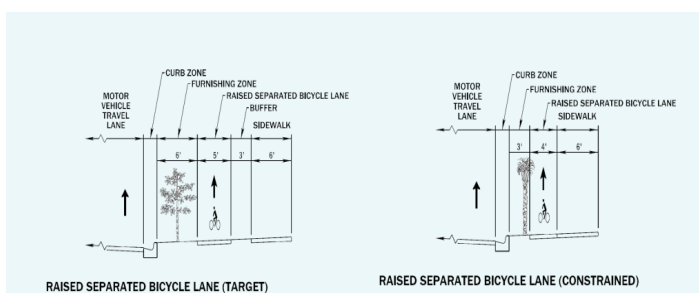


## EXHIBIT C

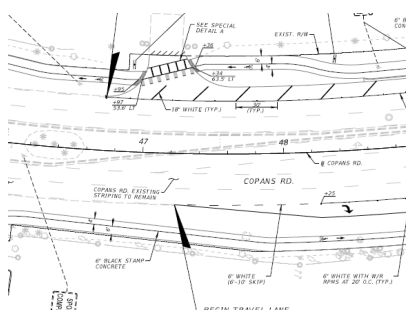
**From:** Kirk Blouin <KBlouin@TownofPalmBeach.com>  
**Sent:** Monday, December 5, 2022 11:52 AM  
**To:** Pat Gayle-Gordon <PGayle-Gordon@TownofPalmBeach.com>  
**Cc:** Paul Brazil <PBrazil@TownofPalmBeach.com>  
**Subject:** Add to Backup Item XIV B. 4.

Jim we are more than happy to provide examples. We have planned, designed and completed multiple types of shared use paths throughout the County for bike and ped travel. Please see examples below:

The Broward MPO published the Complete Streets Guidelines 2.0([http://www.browardmpo.org/images/CSMP/Broward\\_CSDG\\_2.0.pdf](http://www.browardmpo.org/images/CSMP/Broward_CSDG_2.0.pdf) pg. 32 Raised Separated Bicycle Lanes) that provides design guidelines on how to incorporate separated bike and ped facilities.



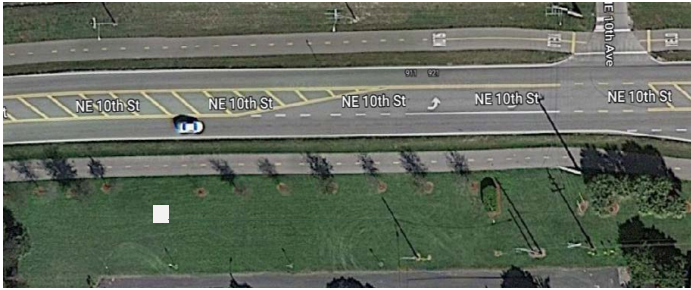
- FM 42957655201 Copans Rd. Mobility Project (see attached signing and marking plans)
  - 
  - Project is currently in design
  - Grade separated bike and ped path along each side of the road. The “shared use paths” have bike and ped pavement markings to delineate their direction and space of travel in both directions



FM 43467415201 Pompano Beach Airpark Multi Use Paths(see attached signing and marking plans)

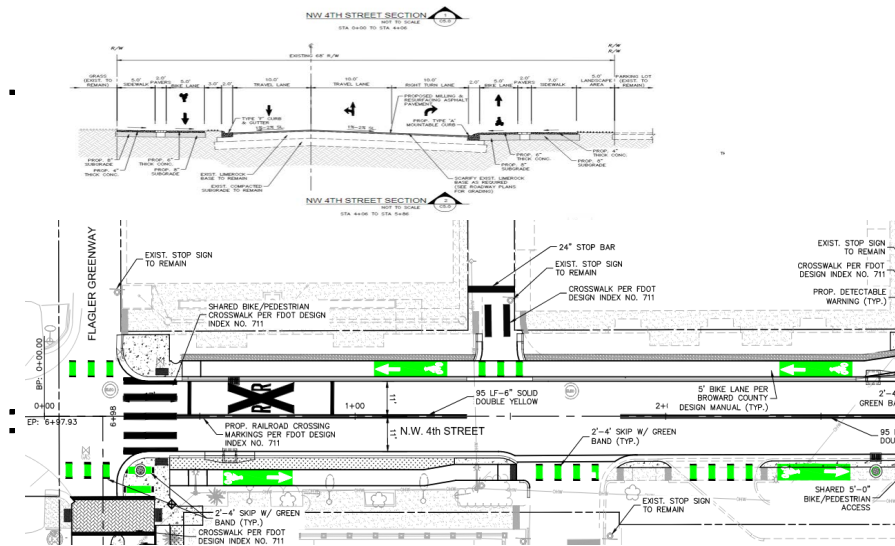
Project is completed

- Separated multiuse paths on each side of the road with pavement markings down the center of the path for two way travel

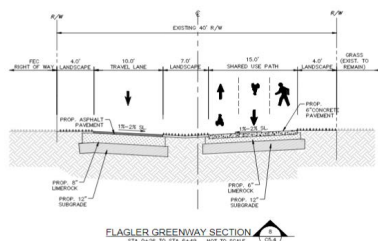


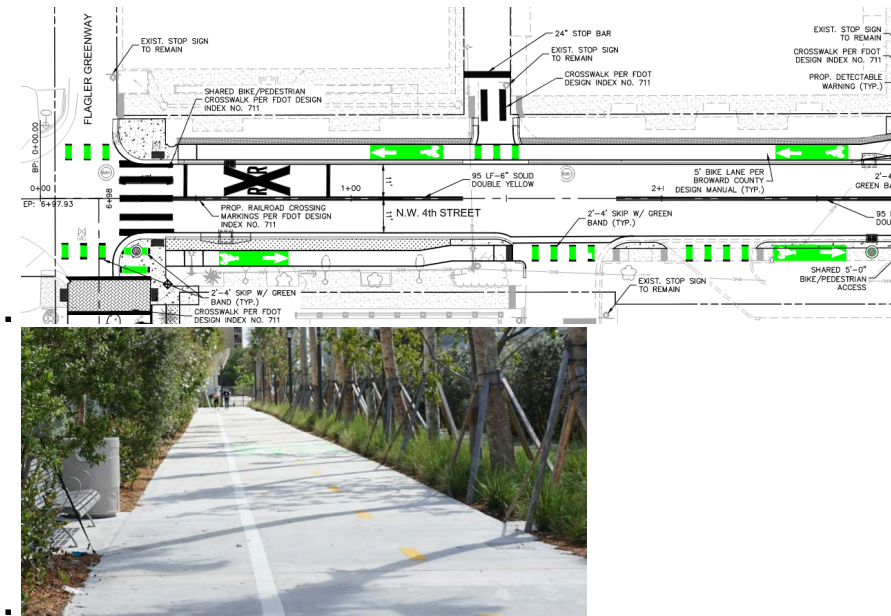
Fort Lauderdale Mobility Hub ( [P12126 Bid Set SS 2019-06-05.pdf](#)) and Story Map(<https://storymaps.arcgis.com/stories/21dab33cdb964b669faab13ea770cb6a>) Project is complete and there are two types of different bike/ped facilities used that could be considered a “shared use path” with pavement markings

NW 4<sup>th</sup> St- Grade separated bike and ped path along each side of the road. The “shared use paths” have bike and ped pavement markings to delineate their direction and space of travel in both directions



Flagler Greenway - “shared use path” with two way cycle track and sidewalk with pavement markings





Jim I hope this helps and provides ample examples that the consultant could use. If the consultant would like to reach out to us and speak further, we will be more than happy to provide further guidance as well.

Sincerely,

Fazal Qureshi, P.E., LEED Green Associate  
 Mobility Initiatives  
 Transportation Engineering  
 Project Manager



Kirk Blouin  
 Town Manager



Town of Palm Beach  
 360 South County Road  
 Palm Beach, FL 33480  
 561-838-5410