

PROPERTY LINE
SETBACK
COASTAL CONSTRUCTION CONTROL LINE

PLANTING AREA, TYP.

LAWN AREA, TYP.

VEGETATION LEGEND

EXISTING TO REMAIN

TREE SP

PALM SP

RELOCATED FROM ON-SITE

TREE SP

PALM SP

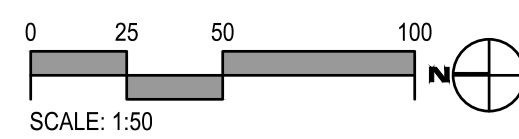
PROPOSED

TREE SP

PALM SP

CHARACTER PALM SP

- GENERAL NOTES:
1. CONTRACTOR IS RESPONSIBLE FOR CALCULATING / VERIFYING ALL QUANTITIES.
 2. GENERAL CONTRACTOR SHALL SUBMIT, OBTAIN AND KEEP RECORDS OF ALL PERMITTING REQUIRED BY LOCAL CODES.
 3. ALL PLANT MATERIAL ARE TO BE APPROVED BY LANDSCAPE ARCHITECT PRIOR TO PROCUREMENT.
 4. ALL PLANT MATERIALS AND ELEMENTS LOCATION / LAYOUT SHALL BE APPROVED BY LANDSCAPE ARCHITECT PRIOR TO INSTALLATION. LANDSCAPE ARCHITECT SHALL BE PROVIDED 3 WEEKS NOTIFICATION IN ADVANCE OF LAYOUT WORK, TO APPROVE ON-SITE FORM WORK, PRIOR TO FABRICATION.
 5. REFER TO ARCHITECTURE DRAWINGS FOR PAVING PATTERNS.
 6. REFER TO SHEET LP.300 FOR PLANTING SCHEDULE.
 7. ALL UNDERGROUND UTILITIES SHALL BE VERIFIED IN FILED BY GENERAL CONTRACTOR PRIOR TO TREE AND PALM INSTALLATION.
 8. ALL NEW UNDERGROUND UTILITIES SHALL BE COORDINATED WITH LANDSCAPE ARCHITECT PRIOR TO INSTALLATION.



CIVIL ENGINEER

Kimley»Horn

1920 WEKIVA WAY, SUITE 200,
WEST PALM BEACH, FL 33411
PHONE: 561-845-0665
FAX: 561-863-8175
WWW.KIMLEY-HORN.COM
REGISTRY NO. 35106

ARCHITECT

FAIRFAX & SAMMONS

FAIRFAX, SAMMONS & PARTNERS, LLC
214 BRAZILIAN AVENUE
PALM BEACH, FL 33480
PHONE: (561) 805-8591

LANDSCAPE ARCHITECT

jungles

RAYMOND JUNGLES, INC.
2964 AVIATION AVENUE
MIAMI, FL 33133
PHONE: (305) 858-6777

COA: 22-037
ZON: 22-107

No.	REVISIONS	DATE

STATE OF FLORIDA
RAYMOND JUNGLES, INC.
LANDSCAPE ARCHITECT

PROJECT No.

DATE 10/28/2022

SCALE AS SHOWN

DESIGNED BY

DRAWN BY

CHECKED BY

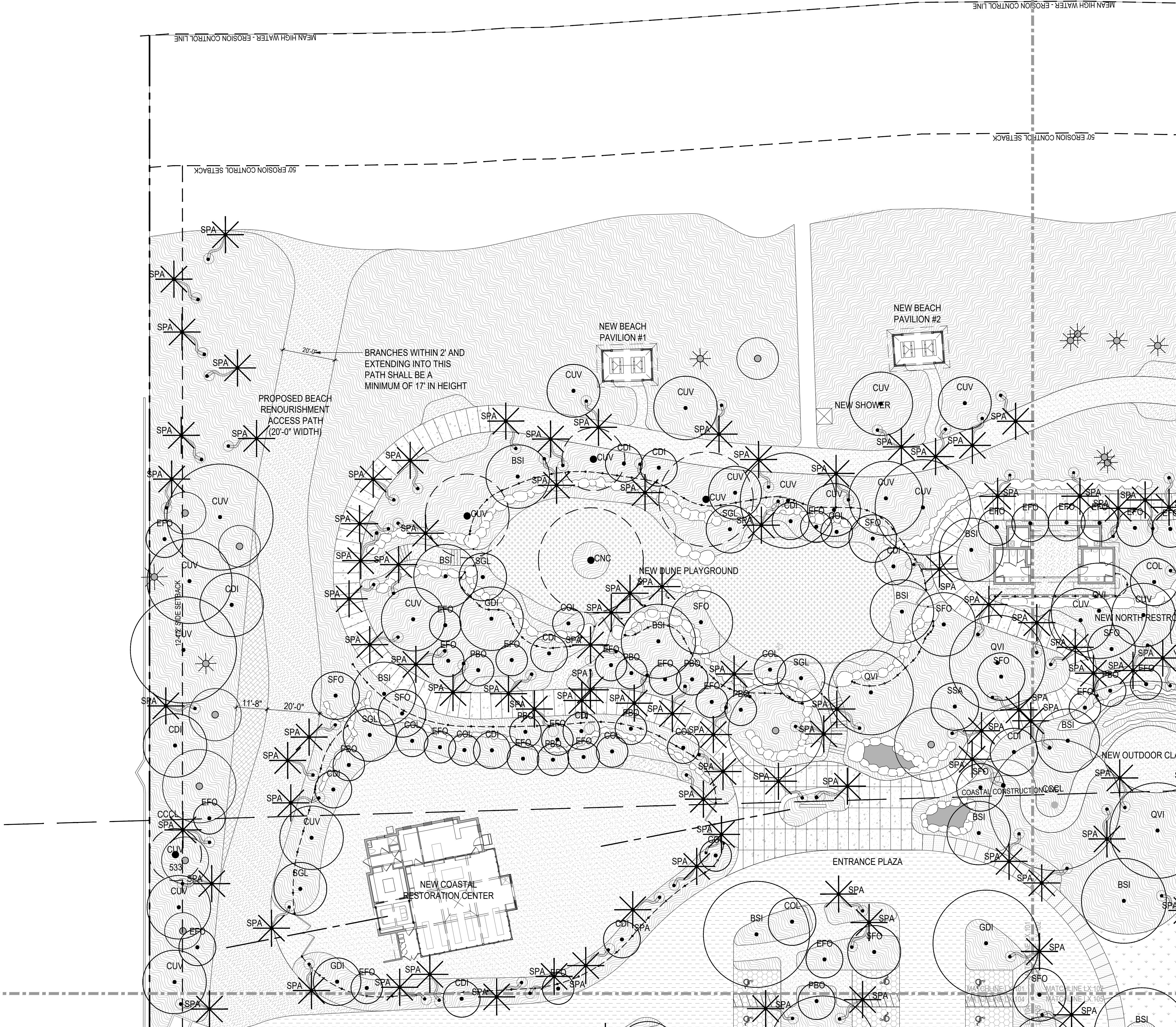
CANOPY PLAN

SEAL OF THE TOWN OF PALM BEACH, FLORIDA
INCORPORATED APRIL 17, 1911

PHIPPS OCEAN PARK
PREPARED FOR
TOWN OF PALM BEACH

SHEET NUMBER
LP.100

This document, together with the concepts and designs presented herein, is intended only for the specific purpose and client for which it was prepared. Reuse of and improper reliance on this document without written authorization and adaptation by Kimley-Horn and Associates, Inc. shall be without liability to Kimley-Horn and Associates, Inc.



LEGEND

PROPERTY LINE
SETBACK

COASTAL CONSTRUCTION CONTROL LINE

PLANTING
AREA, TYP.

LAWN
AREA, TYP.

VEGETATION LEGEND

EXISTING TO REMAIN

TREE SP

PALM SP

RELOCATED FROM ON-SITE

TREE SP

PALM SP

PROPOSED

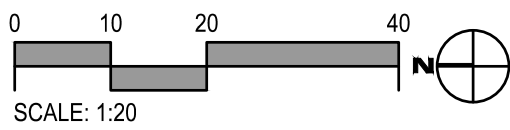
TREE SP

PALM SP

CHARACTER
PALM SP

GENERAL NOTES:

1. CONTRACTOR IS RESPONSIBLE FOR CALCULATING / VERIFYING ALL QUANTITIES.
2. GENERAL CONTRACTOR SHALL SUBMIT, OBTAIN AND KEEP RECORDS OF ALL PERMITTING REQUIRED BY LOCAL CODES.
3. ALL PLANT MATERIAL ARE TO BE APPROVED BY LANDSCAPE ARCHITECT PRIOR TO PROCUREMENT.
4. ALL PLANT MATERIALS AND ELEMENTS LOCATION / LAYOUT SHALL BE APPROVED BY LANDSCAPE ARCHITECT PRIOR TO INSTALLATION. LANDSCAPE ARCHITECT SHALL BE PROVIDED 3 WEEKS NOTIFICATION IN ADVANCE OF LAYOUT WORK, TO APPROVE ON-SITE FORM WORK, PRIOR TO FABRICATION.
5. REFER TO ARCHITECTURE DRAWINGS FOR PAVING PATTERNS.
6. REFER TO SHEET LP.300 FOR PLANTING SCHEDULE.
7. ALL UNDERGROUND UTILITIES SHALL BE VERIFIED IN FILED BY GENERAL CONTRACTOR PRIOR TO TREE AND PALM INSTALLATION.
8. ALL NEW UNDERGROUND UTILITIES SHALL BE COORDINATED WITH LANDSCAPE ARCHITECT PRIOR TO INSTALLATION.



CIVIL ENGINEER

Kimley»Horn

1920 WEKIVA WAY, SUITE 200,
WEST PALM BEACH, FL 33411
PHONE: 561-845-0665
FAX: 561-863-8175
WWW.KIMLEY-HORN.COM
REGISTRY NO. 35106

ARCHITECT



FAIRFAX & SAMMONS

FAIRFAX, SAMMONS & PARTNERS, LLC
214 BRAZILIAN AVENUE
PALM BEACH, FL 33480
PHONE: (561) 805-8591

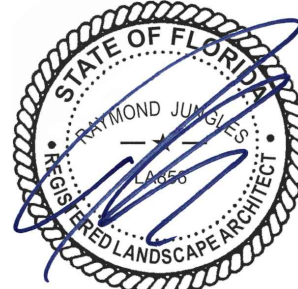
LANDSCAPE ARCHITECT

jungles

RAYMOND JUNGLES, INC.
2964 AVIATION AVENUE
MIAMI, FL 33133
PHONE: (305) 858-6777

COA: 22-037
ZON: 22-107

No.	REVISIONS	DATE



PROJECT No.

DATE 10/28/2022

SCALE AS SHOWN

DESIGNED BY

DRAWN BY

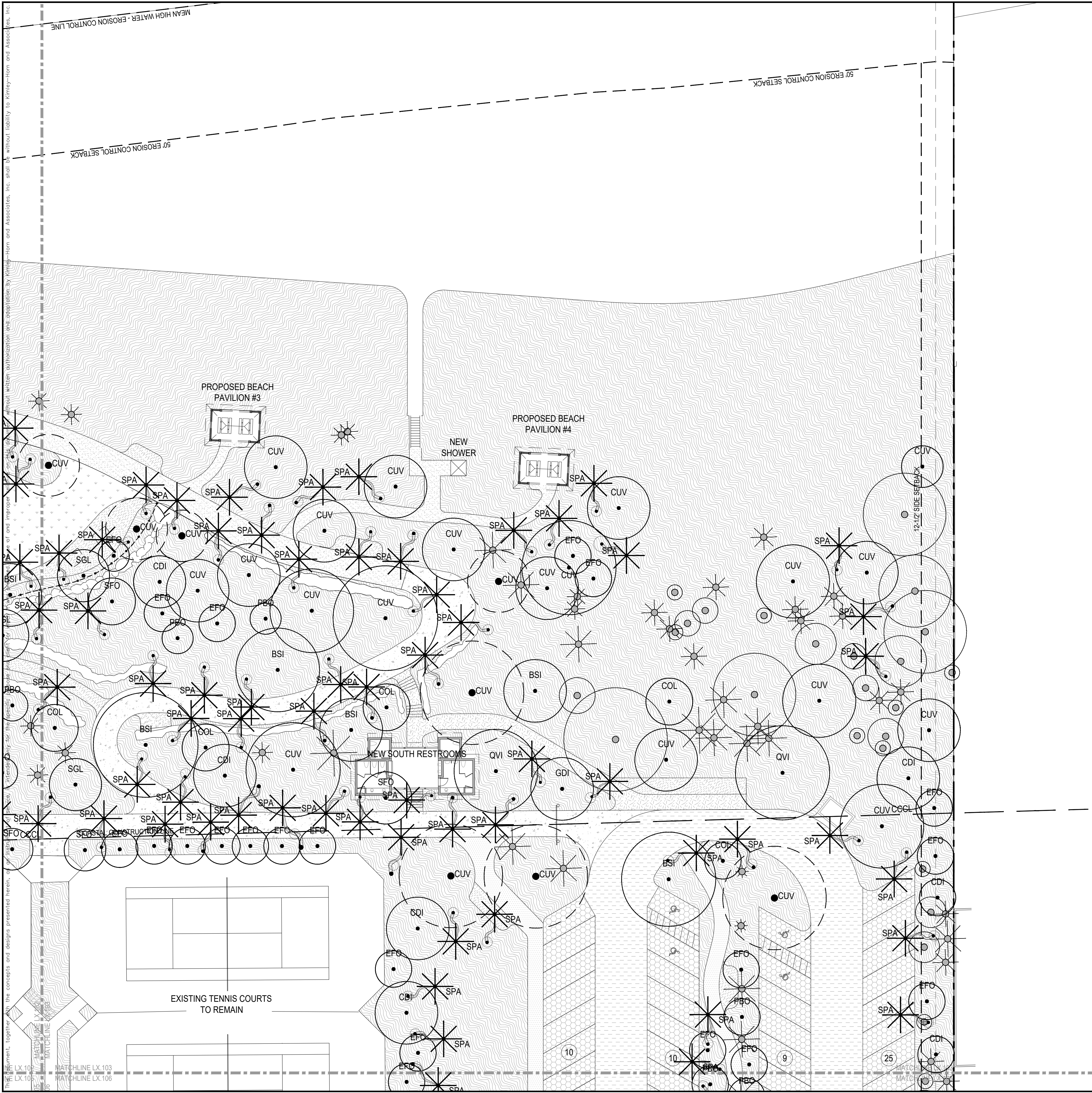
CHECKED BY

CANOPY PLAN
NORTHEAST



**PHIPPS OCEAN
PARK**
PREPARED FOR
TOWN OF PALM
BEACH

SHEET NUMBER
LP.101



LEGEND

PROPERTY LINE

SETBACK

COASTAL CONSTRUCTION CONTROL LINE

PLANTING AREA, TYP.

LAWN AREA, TYP.

VEGETATION LEGEND

EXISTING TO REMAIN

TREE

PALM

RELOCATED FROM ON-SITE

TREE

PALM

PROPOSED

TREE

PALM

CHARACTER PALM

GENERAL NOTES:

1. CONTRACTOR IS RESPONSIBLE FOR CALCULATING / VERIFYING ALL QUANTITIES.

2. GENERAL CONTRACTOR SHALL SUBMIT, OBTAIN AND KEEP RECORDS OF ALL PERMITTING REQUIRED BY LOCAL CODES.

3. ALL PLANT MATERIAL ARE TO BE APPROVED BY LANDSCAPE ARCHITECT PRIOR TO PROCUREMENT.

4. ALL PLANT MATERIALS AND ELEMENTS LOCATION / LAYOUT SHALL BE APPROVED BY LANDSCAPE ARCHITECT PRIOR TO INSTALLATION. LANDSCAPE ARCHITECT SHALL BE PROVIDED 3 WEEKS NOTIFICATION IN ADVANCE OF LAYOUT WORK, TO APPROVE ON-SITE FORM WORK, PRIOR TO FABRICATION.

5. REFER TO ARCHITECTURE DRAWINGS FOR PAVING PATTERNS.

6. REFER TO SHEET LP.300 FOR PLANTING SCHEDULE.

7. ALL UNDERGROUND UTILITIES SHALL BE VERIFIED IN FILED BY GENERAL CONTRACTOR PRIOR TO TREE AND PALM INSTALLATION.

8. ALL NEW UNDERGROUND UTILITIES SHALL BE COORDINATED WITH LANDSCAPE ARCHITECT PRIOR TO INSTALLATION.

0 10 20 40

SCALE: 1:20

N

CIVIL ENGINEER

Kimley»Horn

1920 WEKIVA WAY, SUITE 200,
WEST PALM BEACH, FL 33411
PHONE: 561-845-0665
FAX: 561-863-8175
WWW.KIMLEY-HORN.COM
REGISTRY NO. 35106

ARCHITECT

FAIRFAX & SAMMONS
NEW YORK - PALM BEACH

FAIRFAX, SAMMONS & PARTNERS, LLC
214 BRAZILIAN AVENUE
PALM BEACH, FL 33480
PHONE: (561) 805-8591

LANDSCAPE ARCHITECT

jungles

RAYMOND JUNGLES, INC.
2964 AVIATION AVENUE
MIAMI, FL 33133
PHONE: (305) 858-6777

COA: 22-037
ZON: 22-107

No.	REVISIONS	DATE

STATE OF FLORIDA

RAYMOND JUNGLES, INC.

LANDSCAPE ARCHITECT

PROJECT No.

DATE

10/28/2022

SCALE

AS SHOWN

DESIGNED BY

DRAWN BY

CHECKED BY

CANOPY PLAN
SOUTHEAST

SEAL OF THE TOWN OF PALM BEACH, FLORIDA

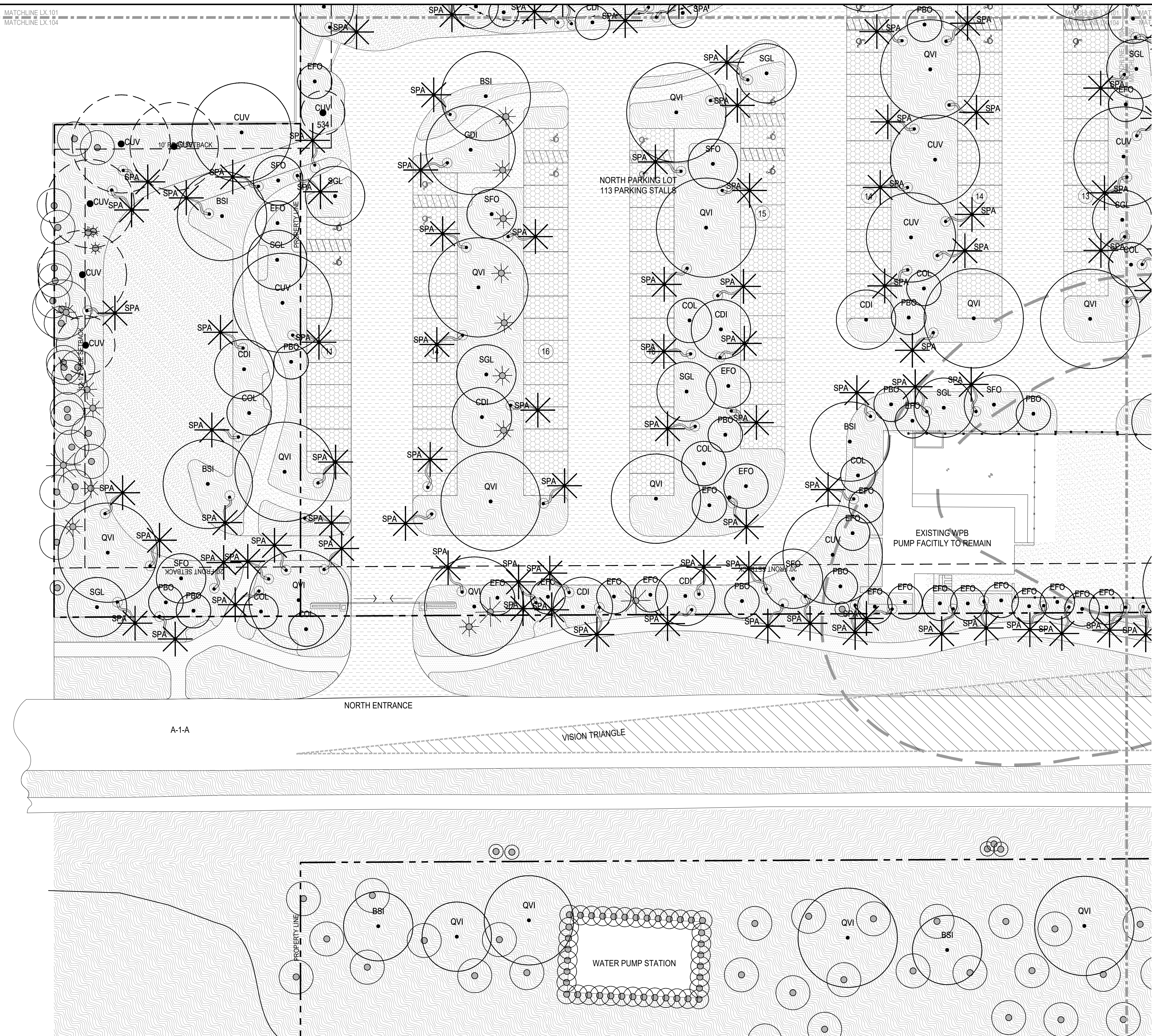
INCORPORATED APRIL 17, 1911

PHIPPS OCEAN
PARK
PREPARED FOR
TOWN OF PALM
BEACH

SHEET NUMBER
LP.103

S:\PROJECTS\202050_Phipps Ocean Park Master Plan\20 DESIGN\24 WORKING\CAD\Sheets\2050_07_LP.100_Canopy Plan.dwg
Luy Du
2022/10/28

This document, together with the concepts and designs presented herein, is intended only for the specific purpose and client for which it was prepared. Reuse of and improper reliance on this document without written authorization and adaptation by Kimley-Horn and Associates, Inc. shall be without liability to Kimley-Horn and Associates, Inc.



LEGEND

PROPERTY LINE
SETBACK
COASTAL CONSTRUCTION CONTROL LINE

PLANTING AREA, TYP.
LAWN AREA, TYP.

VEGETATION LEGEND

EXISTING TO REMAIN

TREE
PALM

RELOCATED FROM ON-SITE

TREE
PALM

PROPOSED

TREE
PALM

CHARACTER
PALM

GENERAL NOTES:

1. CONTRACTOR IS RESPONSIBLE FOR CALCULATING / VERIFYING ALL QUANTITIES.
2. GENERAL CONTRACTOR SHALL SUBMIT, OBTAIN AND KEEP RECORDS OF ALL PERMITTING REQUIRED BY LOCAL CODES.
3. ALL PLANT MATERIAL ARE TO BE APPROVED BY LANDSCAPE ARCHITECT PRIOR TO PROCUREMENT.
4. ALL PLANT MATERIALS AND ELEMENTS LOCATION / LAYOUT SHALL BE APPROVED BY LANDSCAPE ARCHITECT PRIOR TO INSTALLATION. LANDSCAPE ARCHITECT SHALL BE PROVIDED 3 WEEKS NOTIFICATION IN ADVANCE OF LAYOUT WORK, TO APPROVE ON-SITE FORM WORK, PRIOR TO FABRICATION.
5. REFER TO ARCHITECTURE DRAWINGS FOR PAVING PATTERNS.
6. REFER TO SHEET LP.300 FOR PLANTING SCHEDULE.
7. ALL UNDERGROUND UTILITIES SHALL BE VERIFIED IN FILED BY GENERAL CONTRACTOR PRIOR TO TREE AND PALM INSTALLATION.
8. ALL NEW UNDERGROUND UTILITIES SHALL BE COORDINATED WITH LANDSCAPE ARCHITECT PRIOR TO INSTALLATION.

0 10 20 40
SCALE: 1:20

CIVIL ENGINEER
Kimley»Horn
1920 WEKIVA WAY, SUITE 200,
WEST PALM BEACH, FL 33411
PHONE: 561-845-0665
FAX: 561-863-8175
WWW.KIMLEY-HORN.COM
REGISTRY NO. 35106

ARCHITECT
FAIRFAX & SAMMONS
NEW YORK - PALM BEACH
FAIRFAX, SAMMONS & PARTNERS, LLC
214 BRAZILIAN AVENUE
PALM BEACH, FL 33480
PHONE: (561) 805-8591

LANDSCAPE ARCHITECT
jungles
RAYMOND JUNGLES, INC.
2964 AVIATION AVENUE
MIAMI, FL 33133
PHONE: (305) 858-6777

COA: 22-037
ZON: 22-107

No.	REVISIONS	DATE

STATE OF FLORIDA
RAYMOND JUNGLES, INC.
LANDSCAPE ARCHITECT

PROJECT No.
DATE 10/28/2022
SCALE AS SHOWN
DESIGNED BY
DRAWN BY
CHECKED BY

CANOPY PLAN
NORTHWEST

SEAL OF THE TOWN OF PALM BEACH, FLORIDA
INCORPORATED APRIL 17, 1911

PHIPPS OCEAN PARK
PREPARED FOR
TOWN OF PALM BEACH

SHEET NUMBER
LP.104