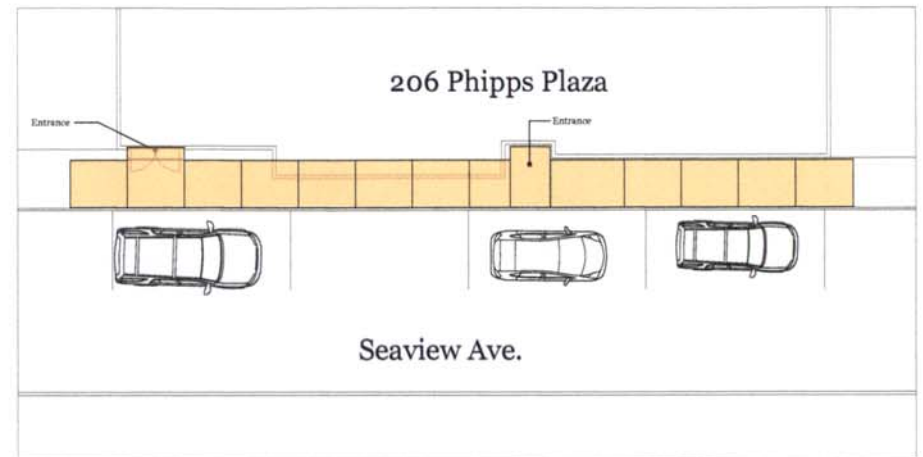
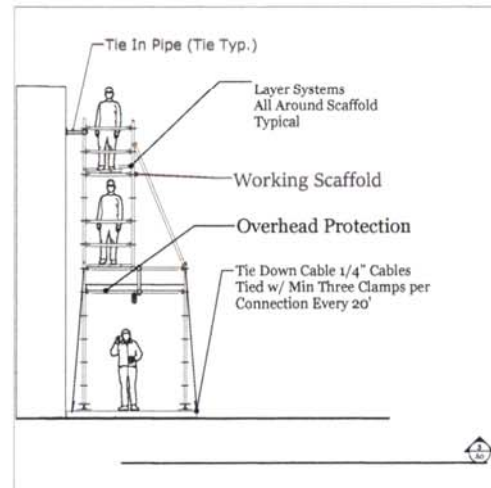
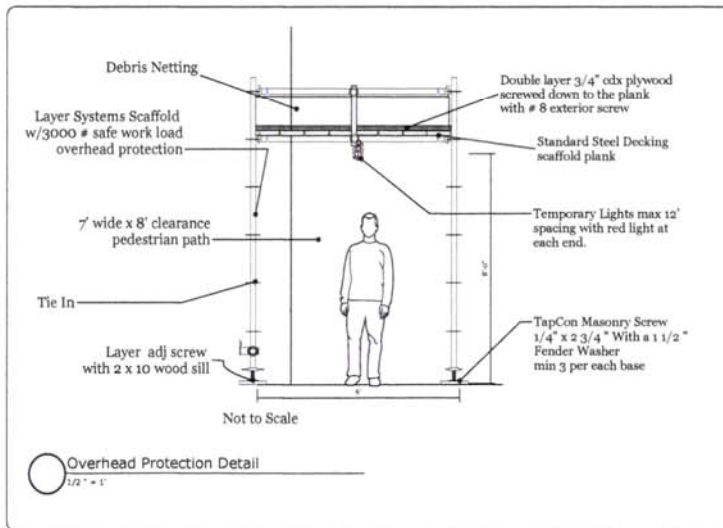




Site View Overhead Protection



Site View Overhead Protection



Detail Fall Protection / Working Scaffolding

Notes;

Windstems

In the event of sustained winds the following dismantling is required:

- A) the construction netting shall be removed in the event of sustained winds in excess of 45 mph.
- B) The sheathing on the protected walkways & Material staging shall be removed in the event of sustained winds in excess of 74 miles mph.
- C) All structures shall be removed in the event of sustained winds in excess of 120 mph.

* All Construction and Materials shall conform to 2020 Florida Building Code.

* Erection and Dismantling of scaffold to conform to all OSHA, SSFI and guidelines and manufacturer's recommendations.

* Scaffold shall be erected by a trained scaffold erector under the supervision of a "competent" or qualified person as defined by, OSHA.

* All calculations and designs based on the use of Biljux Magnafactured standard scaffold.

* Scaffold shall not be contained unless note in plan.

* Scaffold Structure shall not be altered or Modified without the knowledge and consent of the scaffold installer's competent person.

* Provide adequate sills for scaffold post and base plates.

* Coverings over Pedestrian Walkway Tunnels and NOT to be used as a work Platform

Haynes Scaffolding Inc.
1210 Ortega Road
West Palm Beach, Fl. 33405
561-833-8689

General Notes:
1. All construction and materials shall conform to the 2020 Florida Building Code and OSHA standards.
2. Install per Manufactures specifications and recommendations.

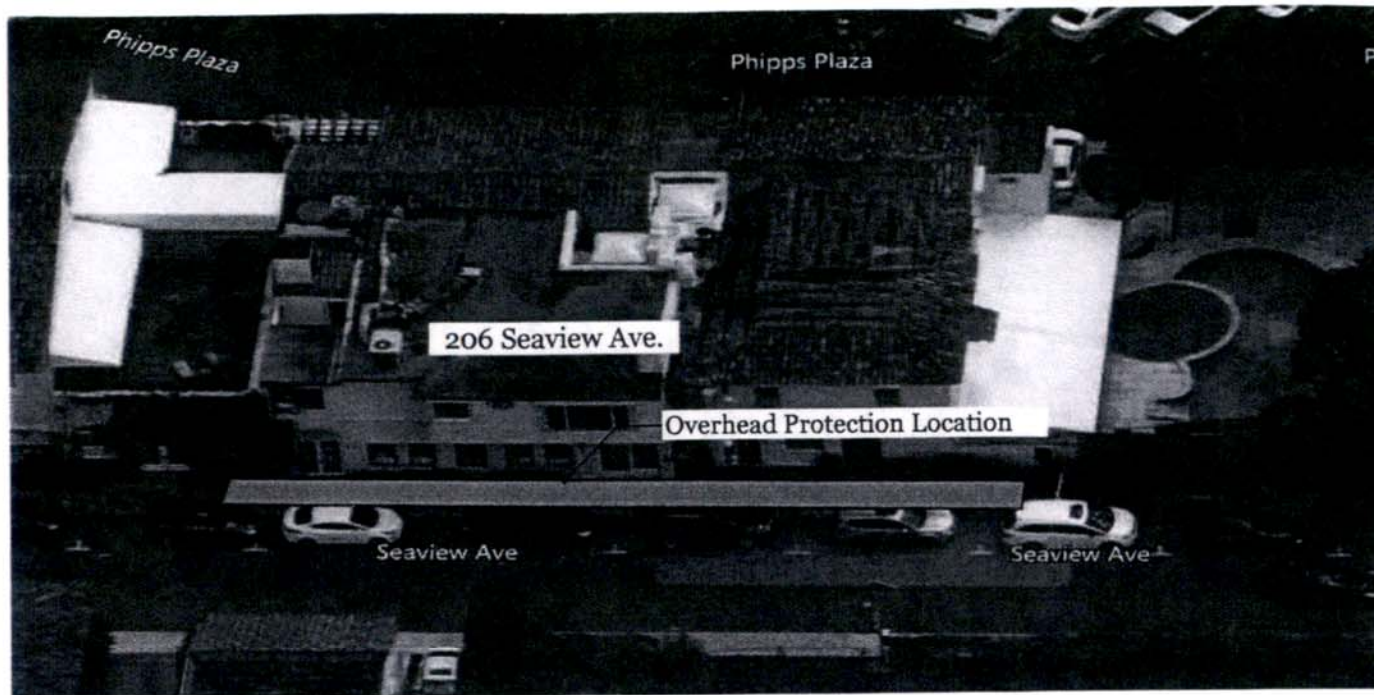
This is a working drawing and is for the use to describe the lay out for the installation of this job. This document is the property of Haynes Scaffolding and supply Inc. and is delivered on the condition that it and the information contained in it are not to be used or disclosed, or in part, for any purpose with out the express written consent of Haynes Scaffolding & Supply Inc.

Gulfstream Builders
206 Seaview Ave.
Palm Beach, Florida

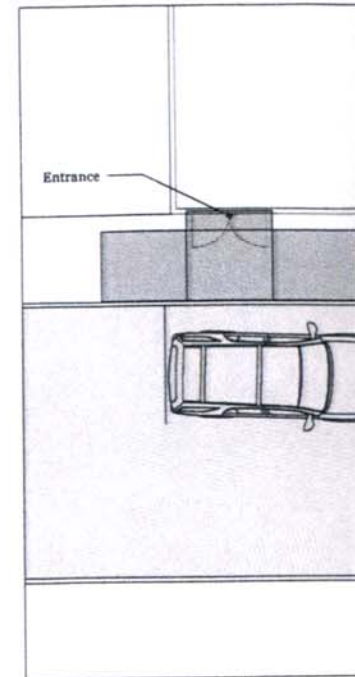


brian
maskol

Digitally signed
by brian maskol
Date: 2022.01.13
18:23:28 -05'00'



Site View Overhead Protection



Site View Overhead Prot

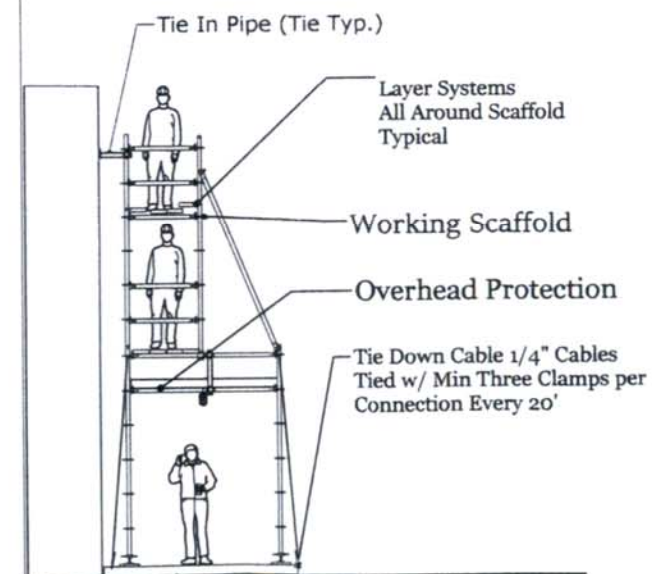
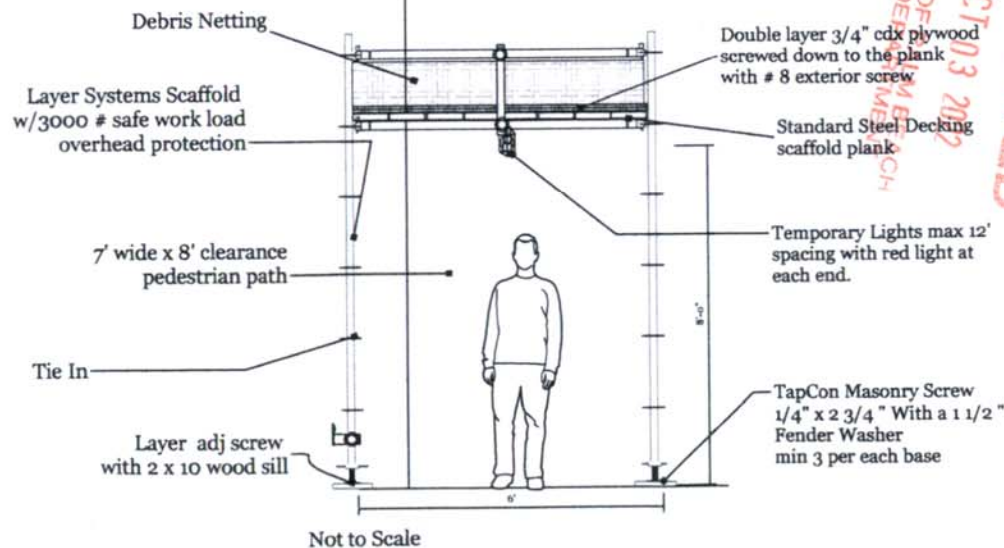




TABLE 3 WORK ZONE SIGN SPACING "X"	
Road Type	Min. Spacing (feet)
Arterials and Collectors with Work Zone Speed ≤ 40 mph	200
Arterials and Collectors with Work Zone Speed ≥ 45 mph	500
Limited Access Roadways *	1,500

* For Limited access roadways with work zone speed ≤ 55 mph, the minimum spacing may be reduced in accordance with the MUTCD and as approved by the Engineer.

TABLE 4 BUFFER LENGTH "B"	
Work Zone Speed (mph)	Min. Length (feet)
25	155
30	200
35	250
40	305
45	360
50	425
55	495
60	570
65	645
70	730

Note: When Buffer Length "B" cannot be attained due to geometric constraints, use the greatest length possible, but not less than 155 feet.