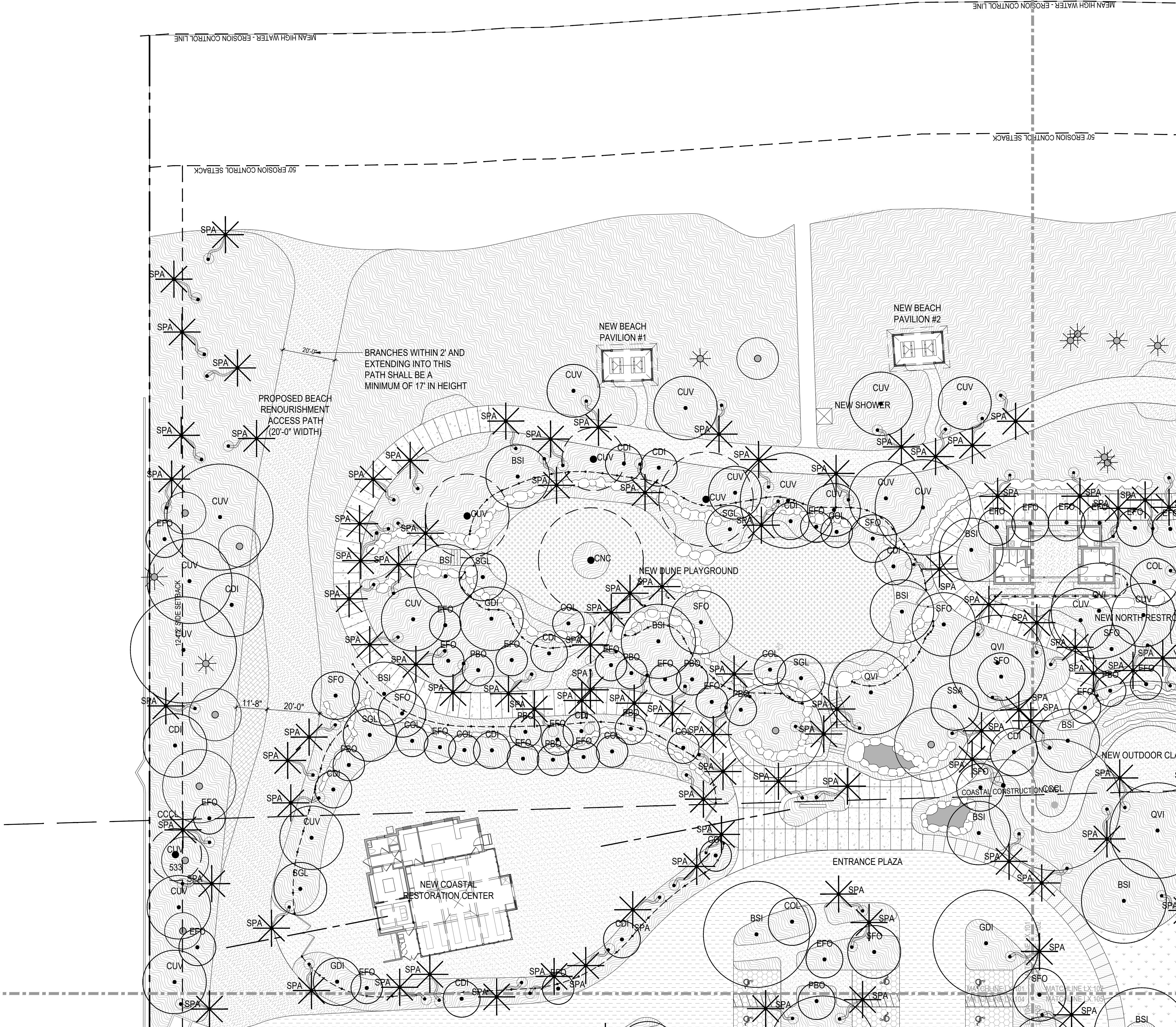


This document, together with the concepts and designs presented herein, is intended only for the specific purpose and client for which it was prepared. Reuse of and improper reliance on this document without written authorization and adaptation by Kimley-Horn and Associates, Inc. shall be without liability to Kimley-Horn and Associates, Inc.



LEGEND

PROPERTY LINE
SETBACK

COASTAL CONSTRUCTION CONTROL LINE

PLANTING
AREA, TYP.

LAWN
AREA, TYP.

VEGETATION LEGEND

EXISTING TO REMAIN

TREE SP

PALM SP

RELOCATED FROM ON-SITE

TREE SP

PALM SP

PROPOSED

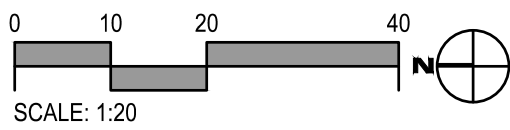
TREE SP

PALM SP

CHARACTER
PALM SP

GENERAL NOTES:

1. CONTRACTOR IS RESPONSIBLE FOR CALCULATING / VERIFYING ALL QUANTITIES.
2. GENERAL CONTRACTOR SHALL SUBMIT, OBTAIN AND KEEP RECORDS OF ALL PERMITTING REQUIRED BY LOCAL CODES.
3. ALL PLANT MATERIAL ARE TO BE APPROVED BY LANDSCAPE ARCHITECT PRIOR TO PROCUREMENT.
4. ALL PLANT MATERIALS AND ELEMENTS LOCATION / LAYOUT SHALL BE APPROVED BY LANDSCAPE ARCHITECT PRIOR TO INSTALLATION. LANDSCAPE ARCHITECT SHALL BE PROVIDED 3 WEEKS NOTIFICATION IN ADVANCE OF LAYOUT WORK, TO APPROVE ON-SITE FORM WORK, PRIOR TO FABRICATION.
5. REFER TO ARCHITECTURE DRAWINGS FOR PAVING PATTERNS.
6. REFER TO SHEET LP.300 FOR PLANTING SCHEDULE.
7. ALL UNDERGROUND UTILITIES SHALL BE VERIFIED IN FILED BY GENERAL CONTRACTOR PRIOR TO TREE AND PALM INSTALLATION.
8. ALL NEW UNDERGROUND UTILITIES SHALL BE COORDINATED WITH LANDSCAPE ARCHITECT PRIOR TO INSTALLATION.



CIVIL ENGINEER

Kimley»Horn

1920 WEKIVA WAY, SUITE 200,
WEST PALM BEACH, FL 33411
PHONE: 561-845-0665
FAX: 561-863-8175
WWW.KIMLEY-HORN.COM
REGISTRY NO. 35106

ARCHITECT



FAIRFAX & SAMMONS

FAIRFAX, SAMMONS & PARTNERS, LLC
214 BRAZILIAN AVENUE
PALM BEACH, FL 33480
PHONE: (561) 805-8591

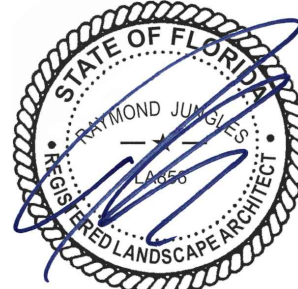
LANDSCAPE ARCHITECT

jungles

RAYMOND JUNGLES, INC.
2964 AVIATION AVENUE
MIAMI, FL 33133
PHONE: (305) 858-6777

COA: 22-037
ZON: 22-107

No.	REVISIONS	DATE



PROJECT No.

DATE 10/28/2022

SCALE AS SHOWN

DESIGNED BY

DRAWN BY

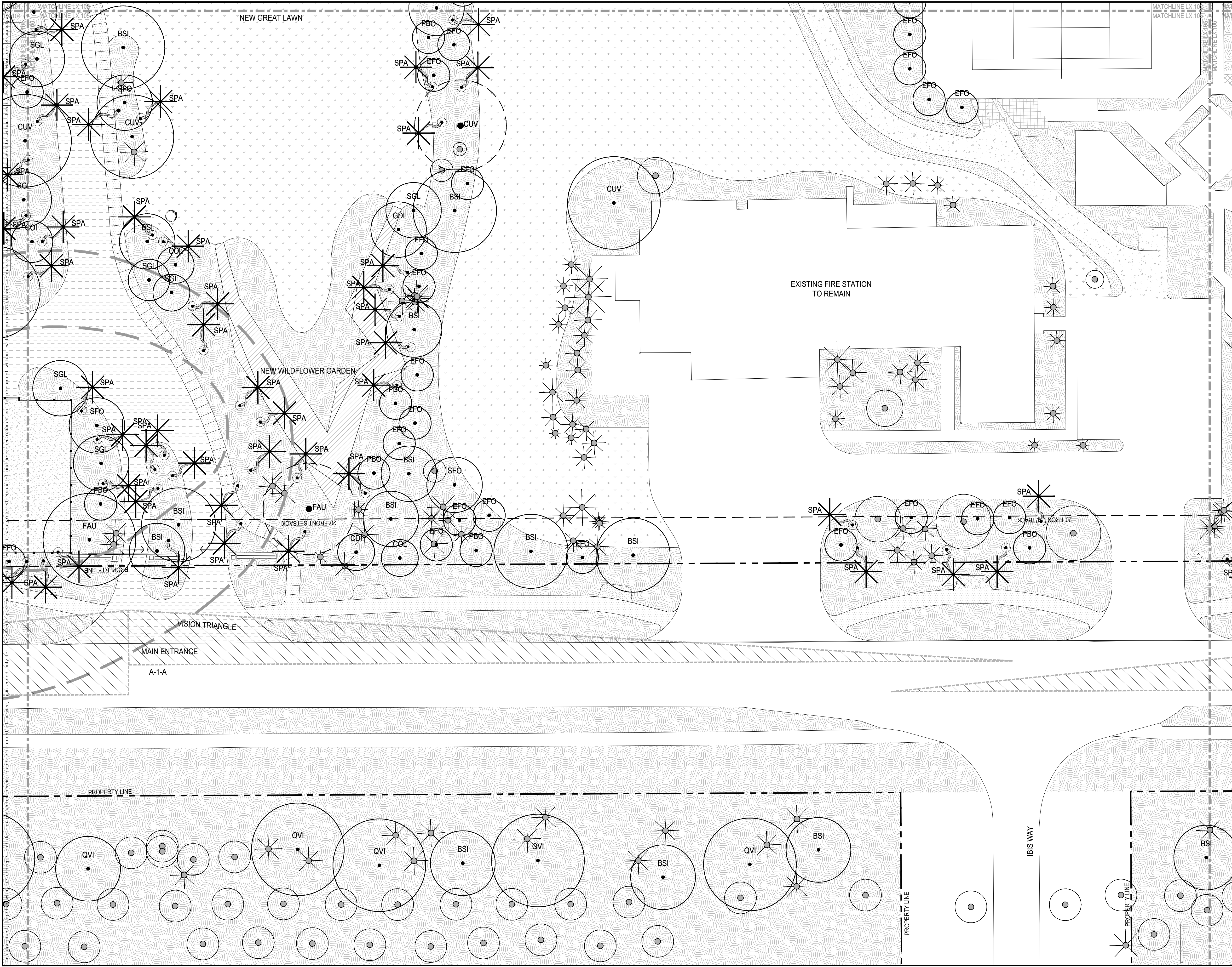
CHECKED BY

CANOPY PLAN
NORTHEAST



PHIPPS OCEAN
PARK
PREPARED FOR
TOWN OF PALM
BEACH

SHEET NUMBER
LP.101

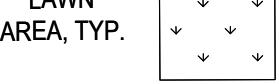


LEGEND

PROPERTY LINE
SETBACK
COASTAL CONSTRUCTION CONTROL LINE



PLANTING AREA, TYP.

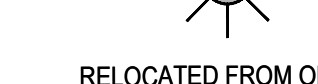


LAWN AREA, TYP.

EXISTING TO REMAIN

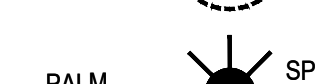


TREE

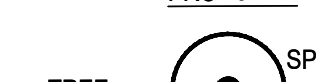


PALM

RELOCATED FROM ON-SITE



TREE

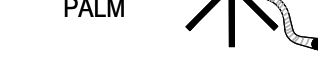


PALM

PROPOSED

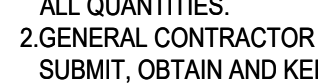


TREE



PALM

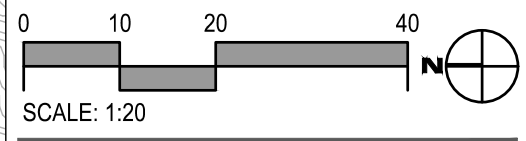
CHARACTER



PALM

GENERAL NOTES:

1. CONTRACTOR IS RESPONSIBLE FOR CALCULATING / VERIFYING ALL QUANTITIES.
2. GENERAL CONTRACTOR SHALL SUBMIT, OBTAIN AND KEEP RECORDS OF ALL PERMITTING REQUIRED BY LOCAL CODES.
3. ALL PLANT MATERIAL ARE TO BE APPROVED BY LANDSCAPE ARCHITECT PRIOR TO PROCUREMENT.
4. ALL PLANT MATERIALS AND ELEMENTS LOCATION / LAYOUT SHALL BE APPROVED BY LANDSCAPE ARCHITECT PRIOR TO INSTALLATION. LANDSCAPE ARCHITECT SHALL BE PROVIDED 3 WEEKS NOTIFICATION IN ADVANCE OF LAYOUT WORK, TO APPROVE ON-SITE FORM WORK, PRIOR TO FABRICATION.
5. REFER TO ARCHITECTURE DRAWINGS FOR PAVING PATTERNS.
6. REFER TO SHEET LP.300 FOR PLANTING SCHEDULE.
7. ALL UNDERGROUND UTILITIES SHALL BE VERIFIED IN FILED BY GENERAL CONTRACTOR PRIOR TO TREE AND PALM INSTALLATION.
8. ALL NEW UNDERGROUND UTILITIES SHALL BE COORDINATED WITH LANDSCAPE ARCHITECT PRIOR TO INSTALLATION.



CIVIL ENGINEER

Kimley»Horn

1920 WEKIVA WAY, SUITE 200,
WEST PALM BEACH, FL 33411
PHONE: 561-845-0665
FAX: 561-863-8175
WWW.KIMLEY-HORN.COM
REGISTRY NO. 35106

ARCHITECT



FAIRFAX & SAMMONS

FAIRFAX, SAMMONS & PARTNERS, LLC
214 BRAZILIAN AVENUE
PALM BEACH, FL 33480
PHONE: (561) 805-8591

LANDSCAPE ARCHITECT

jungles

RAYMOND JUNGLES, INC.
2964 AVIATION AVENUE
MIAMI, FL 33133
PHONE: (305) 858-6777

COA: 22-037
ZON: 22-107

No. REVISIONS DATE



PROJECT No.

DATE 10/28/2022

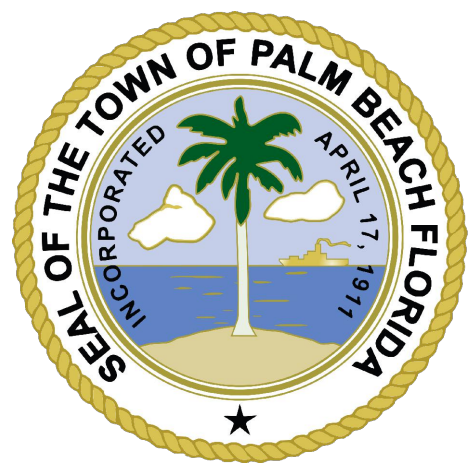
SCALE AS SHOWN

DESIGNED BY

DRAWN BY

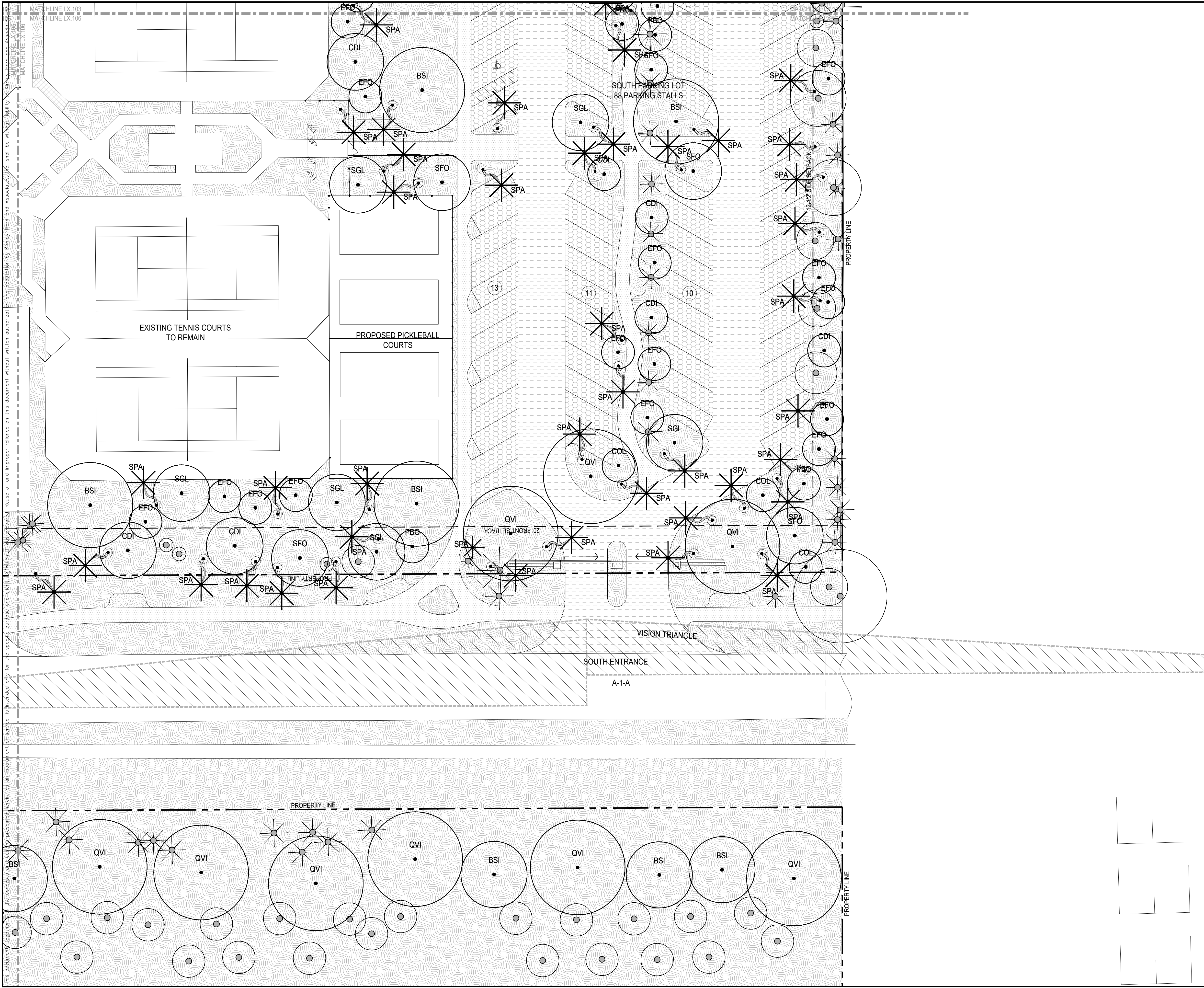
CHECKED BY

CANOPY PLAN CENTER
WEST



**PHIPPS OCEAN
PARK**
PREPARED FOR
TOWN OF PALM
BEACH

SHEET NUMBER
LP.105

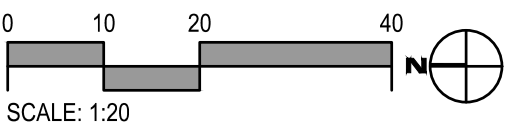


LEGEND

- PROPERTY LINE
SETBACK
COASTAL CONSTRUCTION CONTROL LINE
- PLANTING AREA, TYP.
LAWN AREA, TYP.
- VEGETATION LEGEND
- EXISTING TO REMAIN
- TREE SP
PALM SP
- RELOCATED FROM ON-SITE
- TREE SP
PALM SP
- PROPOSED
- TREE SP
PALM SP
- CHARACTER PALM SP

GENERAL NOTES:

1. CONTRACTOR IS RESPONSIBLE FOR CALCULATING / VERIFYING ALL QUANTITIES.
2. GENERAL CONTRACTOR SHALL SUBMIT, OBTAIN AND KEEP RECORDS OF ALL PERMITTING REQUIRED BY LOCAL CODES.
3. ALL PLANT MATERIAL ARE TO BE APPROVED BY LANDSCAPE ARCHITECT PRIOR TO PROCUREMENT.
4. ALL PLANT MATERIALS AND ELEMENTS LOCATION / LAYOUT SHALL BE APPROVED BY LANDSCAPE ARCHITECT PRIOR TO INSTALLATION. LANDSCAPE ARCHITECT SHALL BE PROVIDED 3 WEEKS NOTIFICATION IN ADVANCE OF LAYOUT WORK, TO APPROVE ON-SITE FORM WORK, PRIOR TO FABRICATION.
5. REFER TO ARCHITECTURE DRAWINGS FOR PAVING PATTERNS.
6. REFER TO SHEET LP.300 FOR PLANTING SCHEDULE.
7. ALL UNDERGROUND UTILITIES SHALL BE VERIFIED IN FILED BY GENERAL CONTRACTOR PRIOR TO TREE AND PALM INSTALLATION.
8. ALL NEW UNDERGROUND UTILITIES SHALL BE COORDINATED WITH LANDSCAPE ARCHITECT PRIOR TO INSTALLATION.



CIVIL ENGINEER

Kimley»Horn

1920 WEKIVA WAY, SUITE 200,
WEST PALM BEACH, FL 33411
PHONE: 561-845-0665
FAX: 561-863-8175
WWW.KIMLEY-HORN.COM
REGISTRY NO. 35106

ARCHITECT



FAIRFAX & SAMMONS

FAIRFAX, SAMMONS & PARTNERS, LLC
214 BRAZILIAN AVENUE
PALM BEACH, FL 33480
PHONE: (561) 805-8591

LANDSCAPE ARCHITECT

jungles

RAYMOND JUNGLES, INC.
2964 AVIATION AVENUE
MIAMI, FL 33133
PHONE: (305) 858-6777

COA: 22-037
ZON: 22-107

No.	REVISIONS	DATE



PROJECT No.

DATE 10/28/2022

SCALE AS SHOWN

DESIGNED BY

DRAWN BY

CHECKED BY

CANOPY PLAN
SOUTHWEST



**PHIPPS OCEAN
PARK**
PREPARED FOR
TOWN OF PALM
BEACH

SHEET NUMBER
LP.106



LEGEND

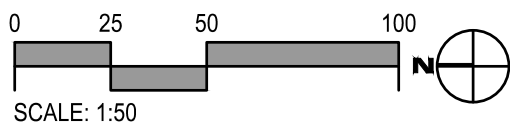
- PROPERTY LINE
SETBACK
COASTAL CONSTRUCTION CONTROL LINE

VEGETATION LEGEND

- DUNE - PIONEER OPEN SAND
DUNE - FACE
COASTAL STRAND - PRICKLY ZONE
COASTAL STRAND - WINDBREAK
COASTAL STRAND - OPEN COS
MARITIME HAMMOCK
GRASS
MARITIME HAMMOCK - EDGE
WILDFLOWER GARDEN
MARITIME HAMMOCK - BUFFER
INTERDUNAL SWALE
GRASS - STABILIZED
RAINGARDENS
MARITIME HAMMOCK - WEST

GENERAL NOTES:

- CONTRACTOR IS RESPONSIBLE FOR CALCULATING / VERIFYING ALL QUANTITIES.
- GENERAL CONTRACTOR SHALL SUBMIT, OBTAIN AND KEEP RECORDS OF ALL PERMITTING REQUIRED BY LOCAL CODES.
- ALL PLANT MATERIAL ARE TO BE APPROVED BY LANDSCAPE ARCHITECT PRIOR TO PROCUREMENT.
- ALL PLANT MATERIALS AND ELEMENTS LOCATION / LAYOUT SHALL BE APPROVED BY LANDSCAPE ARCHITECT PRIOR TO INSTALLATION. LANDSCAPE ARCHITECT SHALL BE PROVIDED 3 WEEKS NOTIFICATION IN ADVANCE OF LAYOUT WORK, TO APPROVE ON-SITE FORM WORK, PRIOR TO FABRICATION.
- REFER TO SHEET LP.300 FOR PLANTING SCHEDULE.
- ALL UNDERGROUND UTILITIES SHALL BE VERIFIED IN FILED BY GENERAL CONTRACTOR PRIOR TO TREE AND PALM INSTALLATION.
- ALL NEW UNDERGROUND UTILITIES SHALL BE COORDINATED WITH LANDSCAPE ARCHITECT PRIOR TO INSTALLATION.



CIVIL ENGINEER

Kimley»Horn

1920 WEKIVA WAY, SUITE 200,
WEST PALM BEACH, FL 33411
PHONE: 561-845-0665
FAX: 561-863-8175
WWW.KIMLEY-HORN.COM
REGISTRY NO. 35106

ARCHITECT



FAIRFAX & SAMMONS

FAIRFAX, SAMMONS & PARTNERS, LLC
214 BRAZILIAN AVENUE
PALM BEACH, FL 33480
PHONE: (561) 805-8591

LANDSCAPE ARCHITECT

jungles

RAYMOND JUNGLES, INC.
2964 AVIATION AVENUE
MIAMI, FL 33133
PHONE: (305) 858-6777

COA: 22-037

ZON: 22-107

No.	REVISIONS	DATE



PROJECT No.

DATE 10/28/2022

SCALE AS SHOWN

DESIGNED BY

DRAWN BY

CHECKED BY

UNDERSTORY PLAN



PHIPPS OCEAN PARK
PREPARED FOR
TOWN OF PALM BEACH

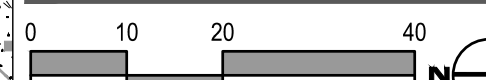
SHEET NUMBER

LP.200

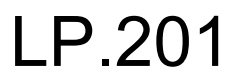
--- MATCHLINE LX.101
--- MATCHLINE LX.104

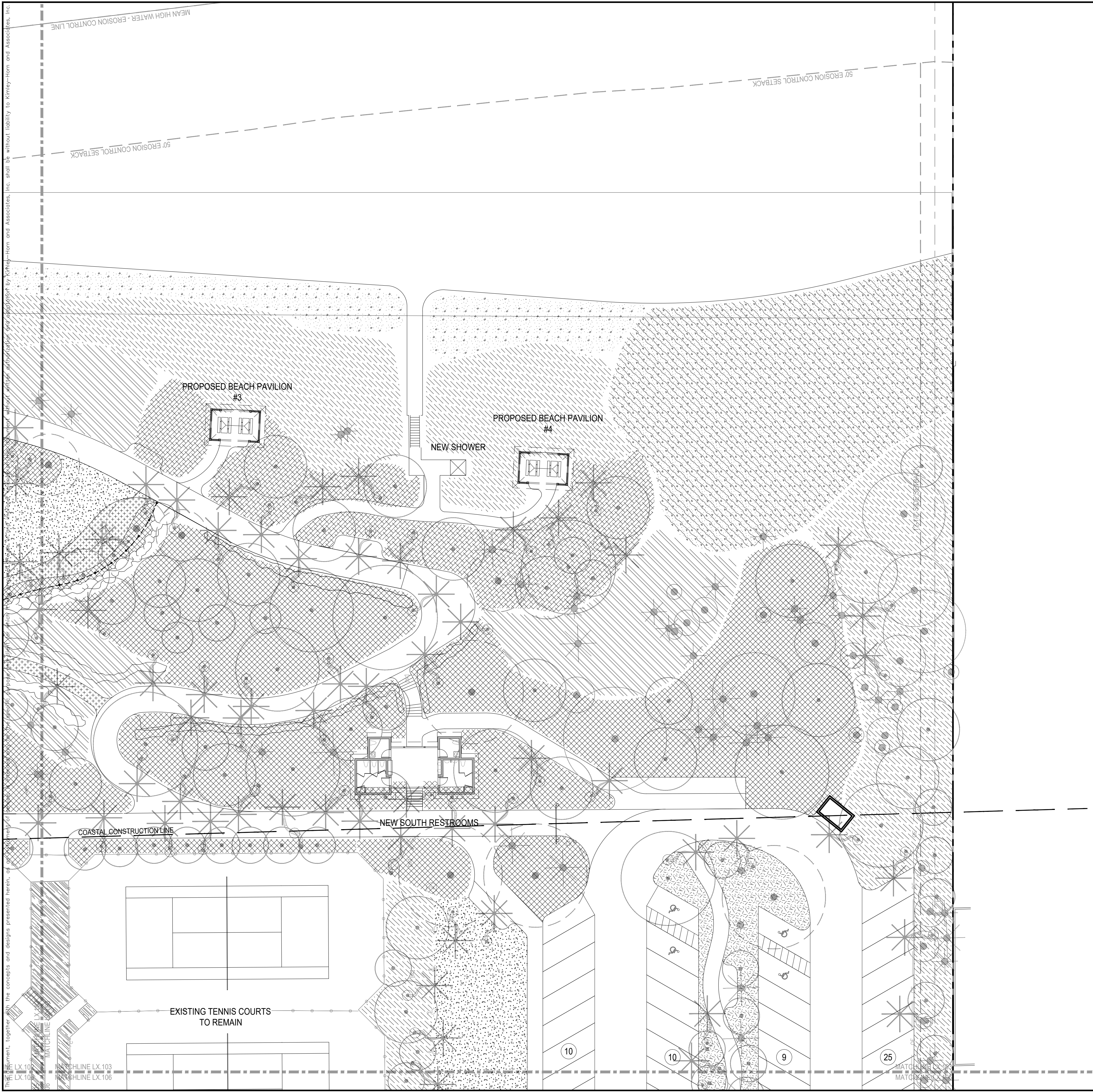
MARITIME HAMMOCK - WEST

LANDSCAPE ARCHITECT PRIOR
TO INSTALLATION.



UNDERSTORY PLAN
NORTHEAST





LEGEND

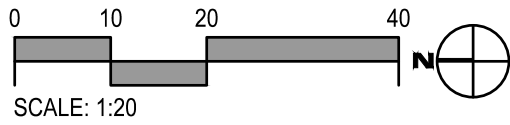
PROPERTY LINE
SETBACK
COASTAL CONSTRUCTION CONTROL LINE

VEGETATION LEGEND

- DUNE - PIONEER OPEN SAND
- DUNE - FACE
- COASTAL STRAND - PRICKLY ZONE
- COASTAL STRAND - WINDBREAK
- COASTAL STRAND - OPEN COS
- MARITIME HAMMOCK
- GRASS
- MARITIME HAMMOCK - EDGE
- WILDFLOWER GARDEN
- MARITIME HAMMOCK - BUFFER
- INTERDUNAL SWALE
- GRASS - STABILIZED
- RAINGARDENS
- MARITIME HAMMOCK - WEST

GENERAL NOTES:

- CONTRACTOR IS RESPONSIBLE FOR CALCULATING / VERIFYING ALL QUANTITIES.
- GENERAL CONTRACTOR SHALL SUBMIT, OBTAIN AND KEEP RECORDS OF ALL PERMITTING REQUIRED BY LOCAL CODES.
- ALL PLANT MATERIAL ARE TO BE APPROVED BY LANDSCAPE ARCHITECT PRIOR TO PROCUREMENT.
- ALL PLANT MATERIALS AND ELEMENTS LOCATION / LAYOUT SHALL BE APPROVED BY LANDSCAPE ARCHITECT PRIOR TO INSTALLATION. LANDSCAPE ARCHITECT SHALL BE PROVIDED 3 WEEKS NOTIFICATION IN ADVANCE OF LAYOUT WORK, TO APPROVE ON-SITE FORM WORK, PRIOR TO FABRICATION.
- REFER TO SHEET LP.300 FOR PLANTING SCHEDULE.
- ALL UNDERGROUND UTILITIES SHALL BE VERIFIED IN FILED BY GENERAL CONTRACTOR PRIOR TO TREE AND PALM INSTALLATION.
- ALL NEW UNDERGROUND UTILITIES SHALL BE COORDINATED WITH LANDSCAPE ARCHITECT PRIOR TO INSTALLATION.



CIVIL ENGINEER

Kimley»Horn

1920 WEKIVA WAY, SUITE 200,
WEST PALM BEACH, FL 33411
PHONE: 561-845-0665
FAX: 561-863-8175
WWW.KIMLEY-HORN.COM
REGISTRY NO. 35106

ARCHITECT



FAIRFAX & SAMMONS

FAIRFAX, SAMMONS & PARTNERS, LLC
214 BRAZILIAN AVENUE
PALM BEACH, FL 33480
PHONE: (561) 805-8591

LANDSCAPE ARCHITECT

jungles

RAYMOND JUNGLES, INC.
2964 AVIATION AVENUE
MIAMI, FL 33133
PHONE: (305) 858-6777

COA: 22-037
ZON: 22-107

No.	REVISIONS	DATE



PROJECT No.

DATE 10/28/2022

SCALE AS SHOWN

DESIGNED BY

DRAWN BY

CHECKED BY

UNDERSTORY PLAN
SOUTHEAST



**PHIPPS OCEAN
PARK**
PREPARED FOR
TOWN OF PALM
BEACH

SHEET NUMBER
LP.203