

State of Florida
Landscape Architect
Registration No.
6666856

SCALE: 1/8" = 1'-0"

KARAKUL RESIDENCE

HARDSCAPE PLAN

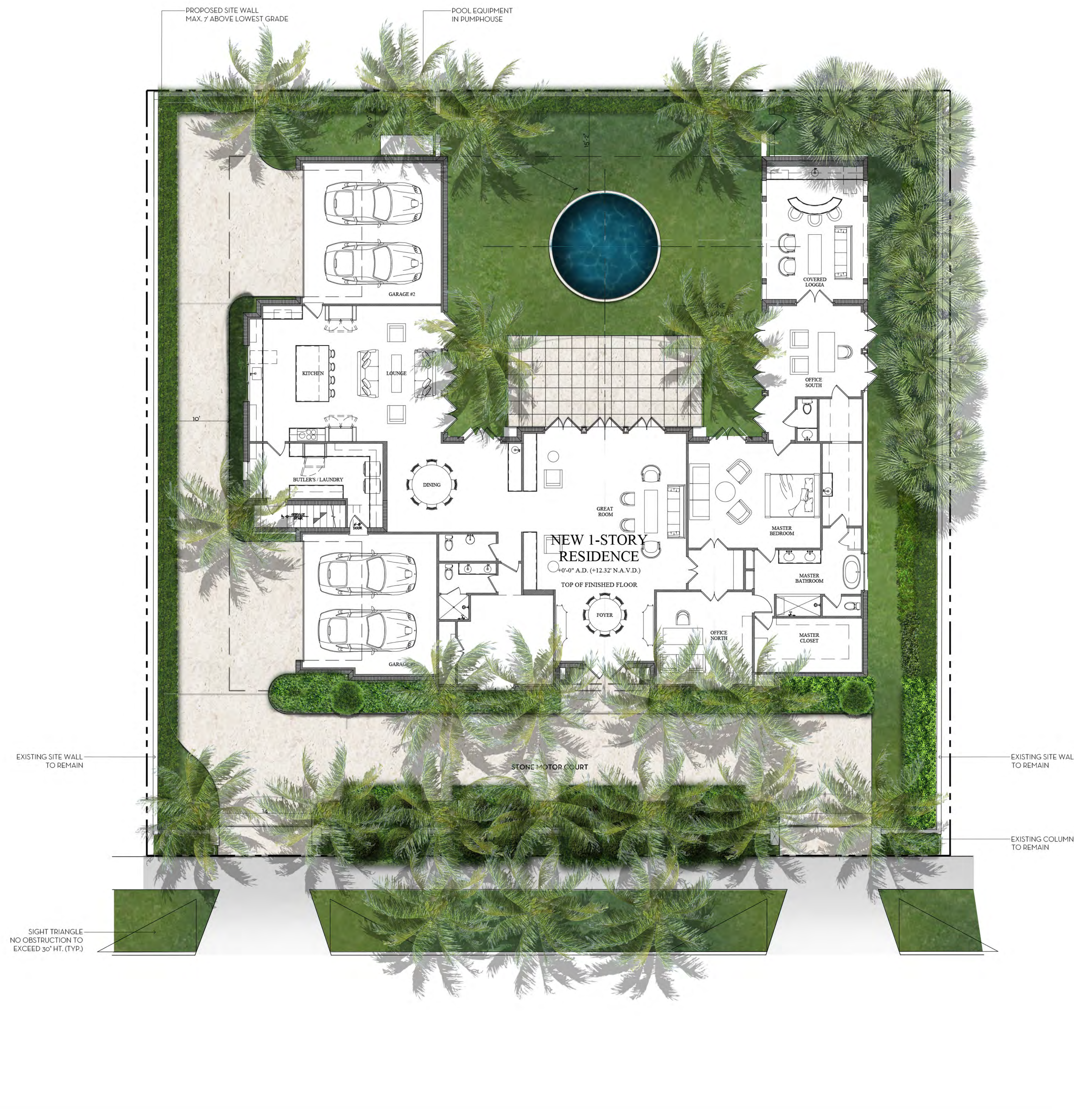
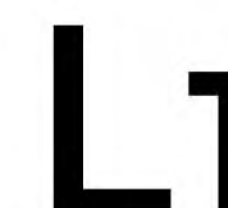
164 SEMINOLE AVE, PALM BEACH, FLORIDA



NIEVERA WILLIAMS
DESIGN

625 N. Flagler Drive
Suite 502
West Palm Beach, FL 33401
P: 561-659-2820
F: 561-659-2113

NIEVERAWILLIAMS.COM





NORTH ELEVATION

0 1 2 4 8 12 FEET
SCALE: 3/16" = 1'-0"

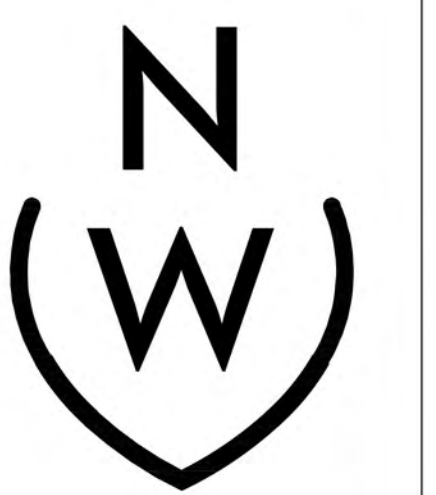
MARIO F. NIEVERA

State of Florida
Landscape Architect
Registration No.
6666856

NORTH ELEVATION
KARAKUL RESIDENCE

164 SEMINOLE AVE, PALM BEACH, FLORIDA
27 JUNE 2022 - FINAL SUBMITTAL
9 MAY 2022 - FIRST SUBMITTAL

SCALE: 3/16" = 1'-0"



NIEVERA WILLIAMS
DESIGN

625 N. Flagler Drive
Suite 502
West Palm Beach, FL 33401
P: 561-659-2820
F: 561-659-2113

NIEVERAWILLIAMS.COM

EL1



WEST ELEVATION

0 1 2 4 8 12 FEET
SCALE: 3/16" = 1'-0"

MARIO F. NIEVERA

State of Florida
Landscape Architect
Registration No.
6666856

WEST ELEVATION
KARAKUL RESIDENCE

164 SEMINOLE AVE, PALM BEACH, FLORIDA

27 JUNE 2022 - FINAL SUBMITTAL
9 MAY 2022 - FIRST SUBMITTAL

SCALE: 3/16" = 1'-0"

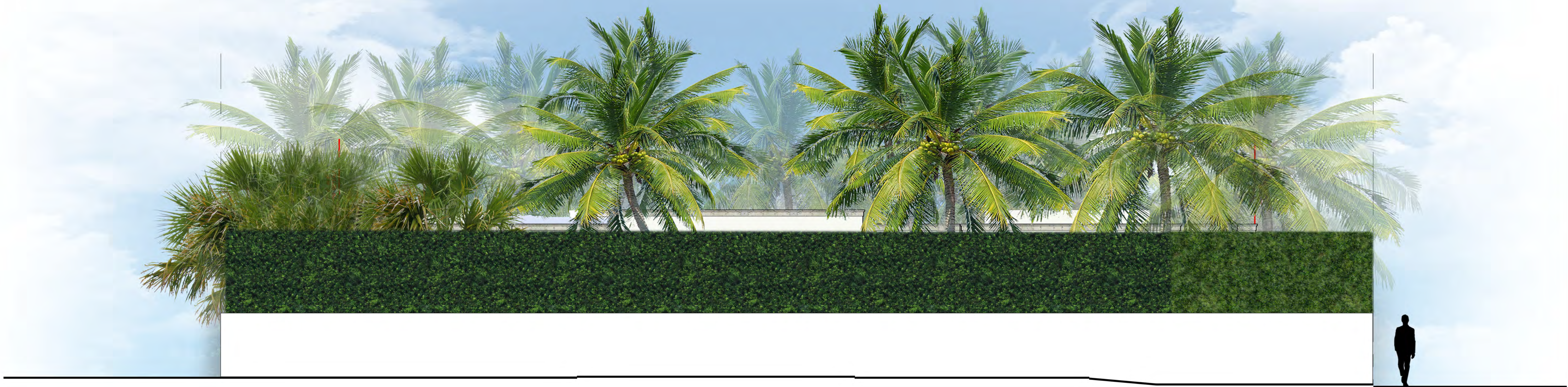


NIEVERA WILLIAMS
DESIGN

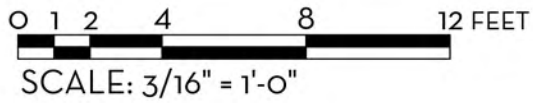
625 N. Flagler Drive
Suite 502
West Palm Beach, FL 33401
P: 561-659-2820
F: 561-659-2113

NIEVERAWILLIAMS.COM

EL2



SOUTH ELEVATION



MARIO F. NIEVERA
State of Florida
Landscape Architect
Registration No.
6666856

SOUTH ELEVATION
KARAKUL RESIDENCE
164 SEMINOLE AVE, PALM BEACH, FLORIDA
27 JUNE 2022 - FINAL SUBMITTAL
9 MAY 2022 - FIRST SUBMITTAL


NIEVERA WILLIAMS
DESIGN

625 N. Flagler Drive
Suite 502
West Palm Beach, FL 33401
P: 561-659-2820
F: 561-659-2113

NIEVERAWILLIAMS.COM

EL3

SCALE: 3/16" = 1'-0"



EAST ELEVATION

0 1 2 4 8 12 FEET
SCALE: 3/16" = 1'-0"

MARIO F. NIEVERA

State of Florida
Landscape Architect
Registration No.
6666856

EAST ELEVATION
KARAKUL RESIDENCE

164 SEMINOLE AVE, PALM BEACH, FLORIDA

27 JUNE 2022 - FINAL SUBMITTAL
9 MAY 2022 - FIRST SUBMITTAL

SCALE: 3/16" = 1'-0"



NIEVERA WILLIAMS
DESIGN

625 N. Flagler Drive
Suite 502
West Palm Beach, FL 33401
P: 561-659-2820
F: 561-659-2113

NIEVERAWILLIAMS.COM

EL4