

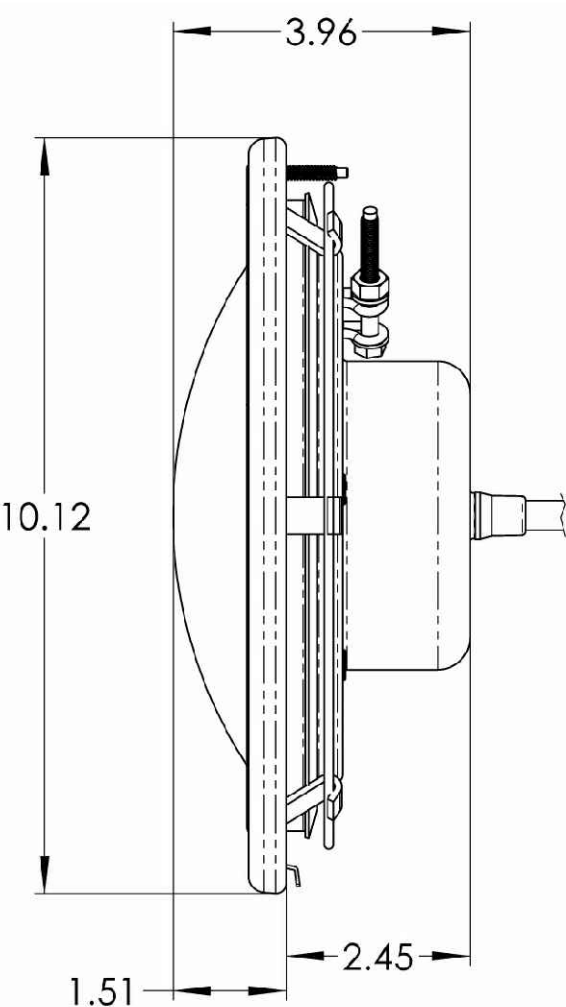
PROPOSED EXTERIOR LIGHTING FIXTURES
LANDWARD OF THE C.C.C.L. NOT DEPICTED

Lighting Plan Key

Symbol	Fixture (brand and model #)	Total # of Fixtures	Type of mount	Mounting Height	Bulb wattage/type	Other Notes
	BEACHSIDE LIGHTING Pathlight (X1-S)	21	pole	20" to top fixture	amber or red 12 volt 2 watt LED-A r-300	DOWN/PATH ONLY ALLOWED
	INTELLIBRITE POOL LIGHT MODEL: 602120	3	submerged/pool wall	varies	26 WATT, LED, amber or red	
	INTELLIBRITE SPA MODEL: 640172	0	submerged/spa wall	varies	amber or red 18 WATT, LED,	

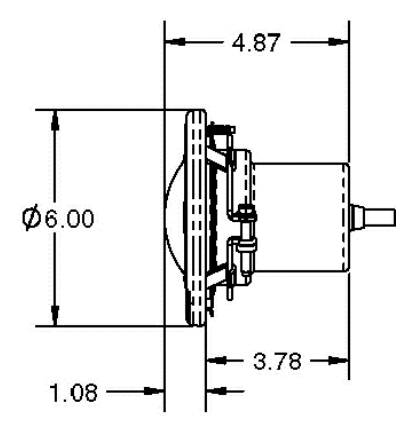
CALL 48 HOURS BEFORE YOU DIG IN FLORIDA

NOTE: Interior swimming pool and pool deck lights shall be turned off while the pool is closed during sea turtle nesting season. Where leatherback turtle nesting occurs during the period of March 1 through October 31). The use of an automatic timer is acceptable.



SPEC: 3 TOTAL IN POOL
LARGE SUBMERGED
LED-POOL LIGHT
FROM WWW.PENTAIRPOOL.COM
INTELLIBRITE
LED, 26 WATT

CONTAINS UNIQUE LENS
WHICH
DIRECTS LIGHT
TO BOTTOM OF POOL



SPEC: 0 TOTAL IN SPA/SUNSHELF
SMALL SUBMERGED
LED-SPA LIGHT
FROM WWW.PENTAIRPOOL.COM
INTELLIBRITE
LED, 18 WATT
CONTAINS UNIQUE LENS
WHICH DIRECTS LIGHT TO
BOTTOM OF SPA



IntelliBrite® 5G
Underwater LED Lights

TURTLE FRIENDLY
IntelliBrite 5G Lights by Pentair are among the brightest, most energy-efficient underwater LED lights available. The new IntelliBrite 5G Turtle Light consumes a mere 26 watts. A model for spas utilizes even less energy—only 18 watts. No matter the choice, each features a custom reflector and innovative lens design that distributes more uniform lighting without the "hot spots" or glare common with other lights.
The IntelliBrite 5G Turtle light adheres to the Florida Wildlife Commission's guidelines while backing swimming pools in a soothing red/orange hue. It creates the perfect nighttime ambience while protecting curious, hard-shelled "guests" that are naturally attracted to bright lights.

AVAILABLE PART NUMBERS:
Part # 602120 IntelliBrite 5G Light 150'
150' POOL, UL, Turtle Edition
Part # 602121 IntelliBrite 5G Light 150'
120' POOL, UL, Turtle Edition
Part # 640172 IntelliBrite 5G Light 150'
150' SPA, UL, Turtle Edition
Part # 640173 IntelliBrite 5G Light 150'
120' SPA, UL, Turtle Edition

Lamp Source	Acquascape 24 volt 120v • 100 LED • 26 wattage (26/260)
Approved Use	Swimming pools and hot tubs • salt water • Not approved for use in Canada
Construction	Stainless steel
Input Rating	120v and 150v
Standard Inclusions	Normal control • 10' stainless steel

Remove Transformers Order Separately
Pentairpool.com | 800-631-7135

X1-S

The X1-S is an unobtrusive, low-voltage downlight. More compact than a shaded path light, its minimalist design allows attention to focus on the lamp's extra-wide flood effect, not the fixture itself.

Construction All brass components, 1/8" (3mm) thick brass housing, 1/2" schedule 40 brass stem
Tempered soda lime glass

Voltage 12 Volt AC/DC with integral driver (9-15V input, dimmable below 9V). Remote transformer required.

Fixture Height Custom stem heights are available upon request. Standard overall height is 20".
20" (51 cm)
Custom height (in inches)

Lamps Trac dimmable MLV-H40 type.
Beachside Candelis Lumens Efficacy
One SP02 LED 2 Watt Amber (1000) 2W-A-ND 40°/114° 18 31 14
One SP02 LED 2 Watt Amber (1000) 2W-RQ-ND 40°/114° 32 32 14

Optical BGSB Brass glass shield, 45° cutoff
BGSB Brass glass shield, full cutoff

Accessories 1/2" male threads. Mounts into any standard 1/2" hole or Brass Surface Box for surface-mount applications on concrete or wood. Includes internal brass collar and stainless steel lag screws. 4.25" (11cm) diameter x 2.0" (5cm) high.
GS2 Heavy-duty ground spike
GS2BC Heavy-duty ground spike with brass cap
GS3R Heavy-duty ground spike with brass cap for telescoping fixture riser
JB Cast brass junction box

Finish: Unfinished is standard, no specification required. The fixture will weather to a natural patina. The patina process is nature with brass and copper. Rate of patina and eventual color is dependent upon climate and proximity to the ocean. Thus, Beachside does not guarantee any specific appearance.

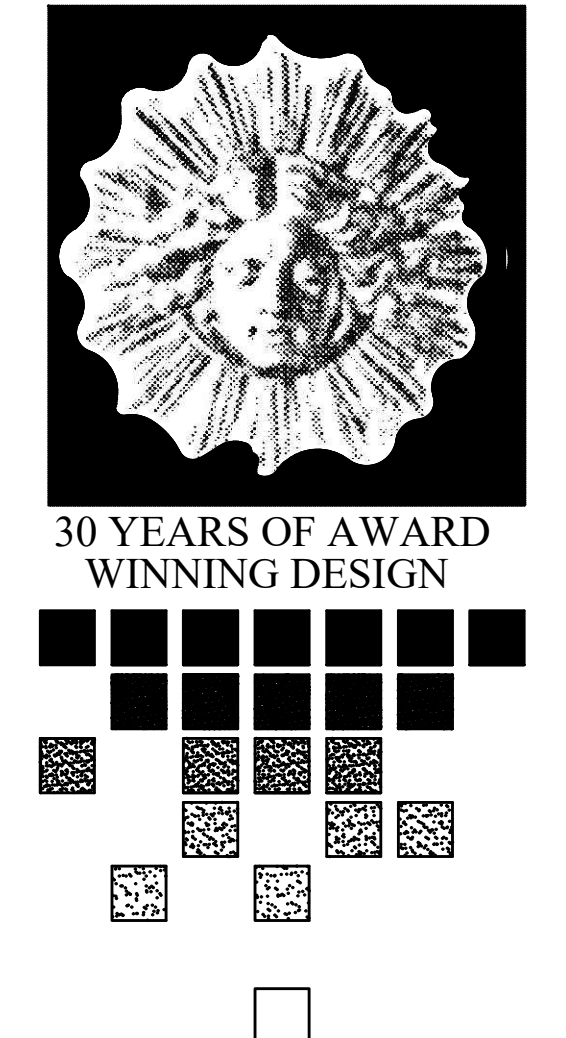
SUITABLE FOR INDOOR AND OUTDOOR USE

Project: _____ By: _____ Date: _____
For ordering purposes, please specify (example: X1-S-20-2W-A-ND-BGSB-BSB)
Fixture: _____ Lamp / Optic: _____ Accessories (ies): _____
BEACHSIDE LIGHTING • 800-405-0732 • www.BeachsideLighting.com • Made in Hawaii, USA

North arrow and scale bar (0 to 20 feet).
PROJECT #: ARC-22-136 / ZON-22-101

THIS PLAN IS DIGITALLY
SIGNED AND SEALED
BY JOHN E. LANG

**LANG
DESIGN
GROUP**
Landscape Architecture*Planning*Site Lighting
1820 2nd Ave North
Lake Worth, Florida 33461
(561) 688-9996 Fax (561) 688-9688
Email: info@langdesigngroup.com



Holzer Residence
980 S Ocean Boulevard
Palm Beach, FL

REVISIONS	BY
05.23.22	MS
06.7.22	MS
06.7.22	MS

DRAWN MS	DATE 4.25.22
CHECKED JEL	SCALE 1/8"=1'-0"

L-LP100

LANDSCAPE SPECIFICATIONS

1. SCOPE OF WORK:

The scope of work includes furnishing all plants, materials, equipment and labor necessary for planting of plant materials indicated on the Drawings and/or in these Specifications.

2. MATERIALS

2.1 PLANT MATERIALS:

A. All plant materials shall be nursery grown unless otherwise noted. Abbreviations on plant list:

- C.W. (indicates clear wood)
- Sp. (indicates spread)
- C.T. (indicates clear trunk measurement from top of ball to first branching)
- O.A. (indicates overall height from top of ball to mid point of current season's growth)

B. Quality and Size:

Plants shall have a habit of growth that is normal for the species and shall be healthy, vigorous and equal or exceed the measurements specified in the plant list, which are the minimum acceptable sizes. Plants shall be measured before pruning with branches in normal position. Any necessary pruning shall be done at the time of planting. Requirements for measurements, branching, grading, quality, baling and burlapping of plants in the plant list generally follow the code of standards currently recommended by the American Association of Nurserymen, Inc., in the American Standard of Nursery Stock. Plant materials shall be graded Florida No. 1 or better as outlined under Grades & Standards for nursery plants. State Plant Board of Florida. Plants that meet the requirements specified, but do not have the normal balance of height and spread typical for the respective plant, shall not be accepted. All plants shall be free of weeds or any other objectionable vegetation.

C. Quantities: All quantities indicated on the plant list are intended as a guide for the bidder and does not relieve the bidder of his responsibility to a comprehensive plant take off. Should a discrepancy occur between the bidder's take off and the plant list quantity, the Landscape Architect is to be notified for the clarification prior to the submission of bids.

D. Substitution:

Plant substitution requests by the Contractor will be considered by the Landscape Architect only upon submission of proof that any plant is not obtainable in the type and size specified. The Landscape Architect shall determine the nearest equivalent replacement in the obtainable size and variety. The unit price of the substitute item shall exceed the bid item replaced, without approval of the owner.

2.2 COMMERCIAL FERTILIZERS:

A. Commercial fertilizer shall be an organic (6-6-6) fertilizer containing nitrogen, phosphoric acid and potash in equal percentages of available plant nutrients from organic sources. Inorganic chemical nitrogen shall not be derived from the sodium form of nitrate. Fertilizers shall be delivered to the site unopened in original containers, each bearing the manufacturer's guaranteed analysis. Any fertilizer that becomes caked or otherwise damaged shall not be acceptable. Planting tables shall be tightly compressed, long lasting, slow release fertilizer tablets with a potential acidity of not more than 5% by weight and having an analysis of 20-10-5.

2.3 PLANT:

Plant shall be horticultural peat composed of not less than 60% decomposed organic matter by weight, on an oven dried basis. Peat shall be delivered to the site in a workable condition, free from lumps.

2.4 PLANTING SOIL:

Planting soil shall be sandy loam and shall contain a minimum amount of decomposed organic matter. Planting soil shall be free of clay, stones, plants, roots and other foreign materials which might be a hindrance to planting operations or be detrimental to good plant growth. Soil shall be delivered in a loose friable condition and be applied in accordance with the Planting Specifications.

2.5 MULCH:

Mulches shall not contain sticks larger than 1/4 inch in diameter, stones, or other foreign material that will prevent the eventual decay of the mulch necessary for its complete effectiveness.

2.6 WATER:

Water for planting will be available at the site and will be provided by the Owner. All conditions regarding site water shall be verified by Contractor prior to submission of bids.

3. EXECUTION:

3.1 PROTECTION OF PLANTS:

A. Root Protection:

1. **Balled and Burlapped Plants:** Plants designated "B & B" (balled and burlapped) shall be dug with firm natural balls of earth of sufficient diameter and depth to encompass the fibrous and feeding root system necessary for full recovery of plant. Balls shall be firmly wrapped with burlap or similar material and bound with wire, cord, or wire mesh. All collected plants shall be balled and burlapped.

B. Container Grown Plants:

Plants grown in containers will be accepted as "B & B" providing that all other specified requirements are met. Container grown plants shall meet plant sizes as specified on the plant list and on the Drawings, and shall not be governed by container sizes. Minimum root balls of container grown materials shall be no more than 25% less proportionately in size than that specified in "Grades & Standards" for nursery plants. These plants shall have been grown in the container for a minimum of two years prior to installation and shall exhibit a fully developed root system when removed from the container.

C. Protection During Transportation:

All plant material shall be protected from possible bark injury or breakage of branches. All plants transported by open trucks shall be adequately covered to prevent windburn, drying or damage to foliage.

D. Protection After Delivery:

Plants which cannot be planted immediately on delivery to the site shall be covered with moist soil, mulch, or other protection from the drying of wind and sun. All plants shall be watered as necessary until planted. Storage period shall not exceed seventy-two (72) hours.

E. Protection of Palms (If Applicable):

Only a minimum of fronds shall be removed from the crown of the palm tree to facilitate moving and handling.

F. Protection During Planting:

Trees moved by winds or cranes shall be thoroughly protected from chain marks, grinding or bark slippage by means of burlap, wood batens, or other approved methods.

3.2 PLANTING OPERATIONS:

A. Layout:

Location for plants and outlines of areas to be planted are indicated on the Drawings. All plant locations shall be indicated in the field by the Contractor, to the satisfaction of the Landscape Architect. Where construction or utilities below ground or overhead are encountered, or where changes have been made in the construction, necessary adjustments will be approved by the Landscape Architect.

B. Soil Preparation:

Soil used shall be as herein before specified under "Planting Soil", thoroughly mixed with peat to produce 25% peat by volume. The soil should be in a relatively dry state and mixed thoroughly by hand or rotary mixer. All planting soil shall be tested with an approved weed killer, according to the manufacturer's specifications.

C. Excavation for Planting:

Excavation of plant pits shall be circular in outline and shall extend to the required subgrade as specified hereunder. The maximum depth of plant pits specified below shall be measured from the finish grade. New planting beds shall be stepped at all vegetation prior to planting.

D. Balled and Burlapped Plants:

After final setting, loosen burlap wrappings exposing the top of the root ball, leaving the ball unbroken. Remove excessive amounts of burlap to eliminate voids which may be caused upon decomposition.

E. Container Grown Plants:

Container grown plants shall, when delivered, have sufficient growth to hold earth intact when removed from container and shall not be root bound. Plant pits for container materials shall be formed flat on the bottom to avoid air pockets at the bottom of the root balls and containers shall be removed carefully to prevent damage to plant or root system.

F. Pits/Sizes:

Minimum diameter (width) and depth of planting pits for balled and burlapped, and container grown plants shall be as follows:

- Diameter - Trees: 18" greater than diameter of ball or spread of roots.
- Diameter - Shrubs: 6" greater than diameter of ball or spread of roots.
- Depth - Trees and Shrubs: 4" greater than depth of ball or roots to provide 4" of spoil backfill under the rootball. (Large, heavy trees and shrubs may sit directly on unexcavated pit bottom if it is determined that undue settlement may occur.)
- Depth - Vines/ Groundcovers: Pits shall conform to accepted nursery practice for the particular species and equal the plant pot depth plus one (1) inch.

G. Backfilling:

When the plant pit has been excavated as specified above and the plant has been set, the pit shall be backfilled with planting soil at the following rates:

- One-half cubic yard per tree
- One cubic yard per fifty shrubs

H. Setting Trees and Shrubs:

Unless otherwise specified, all trees and shrubs shall be planted in pits, centered, and set on four inches (4") of compacted planting soil to such depth that the finished grade level of the plant after settlement shall be the same as that at which the plant was grown. They shall be planted upright and faced to give the best appearance or relationship to adjacent structures. No burlap shall be pulled out from under the balls. Platforms, wire, and surplus burlap from top and sides of the balls, shall be removed. All broken or frayed roots shall be cut off cleanly. Soil shall be placed and compacted thoroughly, avoiding injury and shall be settled by watering. No filling around trunks will be permitted. After the ground settles, additional soil shall be filled to the level of the finished grade allowing for two inches (2") of mulch. Form a shallow saucer around each plant by placing a ridge of soil along the edge of the plant pit. This ridge shall be one inch (1") high for each on each (1") caliper of trunk to a maximum of four inches (4").

I. Setting Palms:

All palms shall be planted in sand, thoroughly washed in during transportation and with a shallow saucer depression left at the soil line for future watering. Saucer areas shall be no less than two inches (2") deep with topsoil raised and left in a neat, clean manner.

J. Fertilization:

When setting trees, palms and shrubs, place in each plant hole Planting Tablets, 20-10-5 Formula, 21 gram, according to the following:

- 1 gallon can _____ 1 tablet
- 5 gallon can _____ 5 tablets
- 10 gallon can _____ 10 tablets

K. Correct Placement of Tablets:

Position the plant in the hole and backfill no higher than halfway up the root ball. Place the recommended number of tablets evenly around the perimeter of, and immediately adjacent to, the root ball at a depth which is between the middle and the bottom of the root ball. Complete backfilling as described above, under setting trees, palms and shrubs.

L. Pruning:

Remove dead and broken branches from all plant materials. Prune to retain typical growth habit of individual species with as much height and spread as is practicable. Make all pruning cuts with a sharp instrument flush with trunk or adjacent branch, in such a manner as to cause elimination of stubs. "Backsaw" cuts, right angle to face of growth, will not be permitted and trees will not be potted or topped. Plant all cuts (12" in diameter and larger with approval) waterproof antiseptic tree paint and remove trimmings from site.

M. Guying and Staking:

Any trees 1 - 1 1/2" in caliper and greater in trees (3) directions with double strands of No. 12 galvanized wire attached to approved anchors driven below grade. When securing wires to trees, cover all wires which may come in contact with any part of tree with new rubber hose. Place guy wires at least 1/3 of the height of tree above finished diameter or more, if possible. All trees shall be interlocked around trunk. Place anchors so that guy wires are equally spaced and at 45 degree angles to horizontal. Keep guy tight until project completion.

N. Matching:

All trees and shrub beds shall be matched immediately after planting to a two inch (2") depth, with a match approved by the Landscape Architect. Prevent wind displacement of mulch by thoroughly wetting down.

O. Exposed Faced and Sides:

Exposed excavated soil shall be disposed of by the Contractor at no additional expense to the Owner.

3.3 SOIL WHEN APPLICABLE:

A. Soil: The contractor shall submit a unit price per cubic yard for the supply and distribution of planting soil as heretofore specified, to be applied at a depth of one inch (1") to all areas receiving soil.

B. Grading:

It shall be the responsibility of the Contractor to finish final grade of landscape areas, eliminating all bumps, depressions, sticks, stones and other debris to the satisfaction of the Landscape Architect, prior to the application of soil. (Supplemental topsoil is to be spread, no soil shall be laid until the depth of soil has been approved.)

C. The soil shall be as called for on the Landscape Drawings.

Soil shall be of firm tough texture, having a compact growth of grass with good root development, and shall contain no Bermuda Grass, weeds, or any other objectionable vegetation. The soil embedded in the soil shall be good earth, free from stones and debris and all soil shall be free from fangs, vermin and other diseases.

D. Before being cut and lifted, the soil shall have been moved

at least three times with a lawn mower, with final mowing not more than seven (7) days before the soil is cut. The soil shall be carefully cut into uniform dimensions.

E. Solid soil shall be laid with closely shoring joints with a

leveled or rolled, even surface. It shall be the responsibility of the contractor to bring the soil edge in a neat, clean manner to the edge of all paving and shrub areas. If, in the opinion of the Landscape Architect, top-dressing is necessary after rolling, clean soil will be evenly applied over the entire surface and thoroughly washed in.

3.4 CLEANUP:

Any soil, peat or similar material which has been brought onto any paved areas shall be removed promptly, keeping these areas clean as the work progresses. Upon completion of the planting, all excess soil, stones and debris which has not been previously cleaned up shall be removed from the site.

3.5 MAINTENANCE:

A. Maintenance shall begin immediately after each plant is planted and shall continue until all planting has passed final inspection and acceptance. Maintenance shall include watering, weeding, cultivating, removal of dead materials, resetting plants to proper grades or upright positions and restoration of the planting surface and any other necessary operations. Proper protection to lawn areas shall be provided and any damage resulting from planting operations shall be repaired promptly.

B. All trees shall be deep watered for a period of 90 days after

planting.

C. In the event of the threat of serious damage resulting from

insects of disease prior to final acceptance, the plants shall be treated by preventative or remedial measures approved for good horticultural practice at no additional cost to the Owner.

3.6 INSPECTION AND ACCEPTANCE:

A. Inspection:

Inspection of work to determine completion of contract, exclusive of the possible replacement of plants, will be made by the Owner and the Landscape Architect, at the conclusion of all planting and at the written request of the Contractor.

B. Acceptance:

After inspection, the contractor will be notified by the Owner and the Landscape Architect, at the acceptance of all plant material and workmanship, exclusive of the possible replacement of plants subject to guarantee.

3.7 GUARANTEE AND REPLACEMENT:

A. Guarantee: The Contractor, as part of his Contract, shall furnish a written guarantee warranting all materials, workmanship and plant materials, except root, for a period of six (6) months from the time of completion and acceptance. All plant materials shall be delivered in satisfactory condition and growth for each specific kind of plant at the end of the guarantee period. Where validation is agreed by the Landscape Architect as the cause for replacement, the Contractor shall not be responsible for replacement during the six (6) month guarantee after final acceptance.

*Trees and Palms shall be guaranteed for twelve (12)

months.

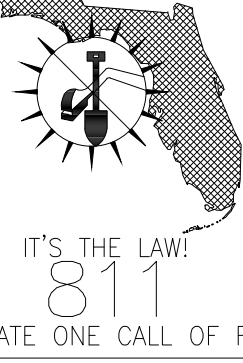
B. Soil shall be guaranteed for a two (2) month period, dating

from final acceptance and any lawn care which becomes necessary during the complete period will be the responsibility of the Contractor to ensure a vigorous stand of grass.

TOTAL QTY	PLANT LIST Code	Native	Drought /water needs	Botanical Name / Common Name	Specifications, height and total native spread at time of planting quantity	total native quantity and native %
	TREES:					
1	CEI	Native	L	Ceiger Cordia sebestiana	BB, FG, 15'oa, 3" cal	1
1	SILVBT	Native	L	Buttonwood Conocarpus erectus Sh-r	BB, FG, 14'-16' oa x 8" spread, 3" caliper min	1
9	CLU12		I	chisia small leaf guttifera	BB, FG, 10-12'oa, std	
20	CB		L	Calophyllum Brasiliense Brazilian Beauty leaf	BB, FG, 18'-20' oa, std, limbed up 6'-7', 3" caliper min , root barrier panels against driveway	
2	GL	Native	L	Gumbo Limbo Tree Bursera simaruba	BB, FG, 12" caliper specimen show picture to L.A. 20' x 18'	2
19	EXIST SEA GRA PE	Native	L	Existing Seagrape trees	existing over 12' up to 40' oa	19
52 total trees						23 Total Native Trees 44% NATIVE TREES PROVIDED
	PALMS:					
14	TR	NATIVE	L	Coccothrinax Thatch Palm	BB, FG, 12-16'oa singles	14
11	CGM		L	Cocconut Green Maypan	BB, FG, 12' GW min - 18' GW	
4	SAGO		L	Sago King Sago palm	1-2 CT single, 4-5'oa	
29 total palms						14 TOTAL NATIVE PALMS 48% NATIVE PALM
	HEDGES /SHRUBS					
32	AGAVE	NATIVE	L	Agave	variety tbs	32
40	ARB6		L	green Arboricola	7 gallon, 4-5' lb bush	
4	BV		I	bougainvillea vine	15 gallon color tbs on wall	
2	B2S			Bougainvillea standard	25 gallon, 3" caliper color tbs	
53	CLUSIA8		L	Chisia guttifera Small Leaf Chisia	6-7"oa, FTB Bush	
45	CAR			Carissa Microcarpa	3 gallon	
160	GF		L	Green Island Ficus	3 gallon, 18" o.c.	
45	GF30		L	Green Island Ficus	30" ht, FTB Bush	
40	GO		L	Spathoglottis plicata or openheimum	ground orchid color tbs 3 gallon	
165	IV	NATIVE	L	Ilex vomitoria nana shellings holly	4 gallon, 18" o.c.	165
45	H		M	Hibiscus color tbs	3 gallon, bush	
40	KINGM		m	Kings Mantle bush	3 gallon	
2	TH		M	Hibiscus color tbs	15 gallon, std, 5'oa color	
65	SEA G4	Native	L	Coccoloba Seagrape Bush	7 gallon, 3-4'oa	65
120	SILVERB3, SILVB	Native	L	Bush Buttonwood, Conocarpus erectus Silver	3 gallon	120
45	SILVERB	Native	L	Bush Buttonwood, Conocarpus erectus Silver	6-8'oa, FTB bush	45
4PM			M	Tabernaemontana pinwheel jasmine	3 gallon-	
903 total plants						429 Total Native SHRUBS 47% NATIVE SHRUBS
	groundcov ers/ vines					
18	AN		H	Annulars	trays	
25	CJ			Confederate jasmine Vine	6' trellis , removed and attach to site wall	
65	ORCHIDS		L	Orchid variety by owner	bare rooted plants	
8	PASS	Native	L	Passion Vine passiflora	3 gallon trellis	8
365	SUN	Native	L	dune Sunflower	1 gallon	365
30	TJM		L	Trachelospermum jasminoides	trays	
8	STEPH		L	Stephanotis vine	3 gallon, 18" o.c.	
519 total plants						373 Total Native VINES/GC 71% NATIVE VINES/GC
	Misc.					
	Sod			Pas Palm Seashore	sq ft laid end to end, sanded and rolled	
	Root Barrier	lin ft		Bio Root Barrier	per manufacturer's recommendation , for any palms or trees in pool planters, and within 5' of walks and drives etc	
	FERT			Fertilizer	bags	
	KEY:	Native				
			L	Low Water Needs		
			M	Medium Water Needs		
			H	High Water Needs		

IT IS THE CONTRACTORS RESPONSIBILITY TO CALL 811 SPECIFICALLY "HOT WIRE" FIBER OPTIC CABLE

CALL 48 HOURS BEFORE YOU DIG IN FLORIDA

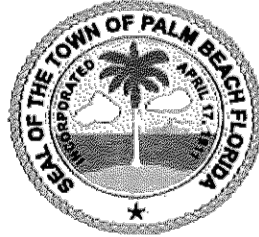
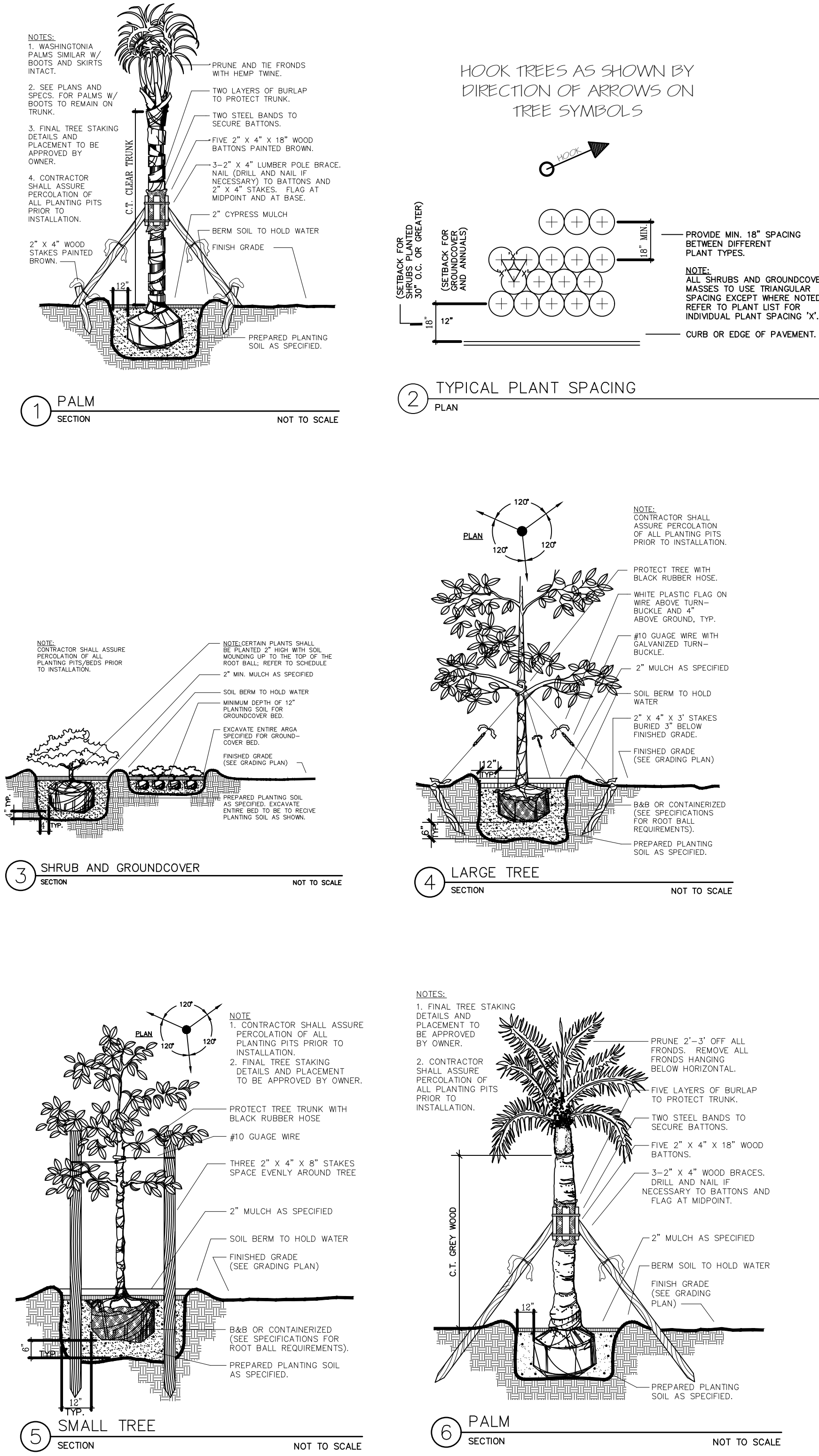


NATIVE COVERAGE REQUIREMENT:

REQUIRED MINIMUM LANDSCAPE 35% IN EACH CATEGORY

PROVIDED NATIVE TREES = 23 / 44% TREES
PROVIDED NATIVE PALMS = 14 / 48% PALMS
PROVIDED NATIVE SHRUBS = 429 / 47% SHRUBS
PROVIDED NATIVE VINES/GC = 373 / 71% GC/Vine

SEE PLANT LIST ON SHEET L-L200 FOR NATIVE PLANT LIST CALCULATIONS PER SPECIES



Town of Palm Beach

Planning Zoning and Building

360 S County Rd

Palm Beach, FL 33480

www.townofpalmbeach.com

Landscape Legend

Line #	Property Address:	Required	Proposed
1	980 S. Ocean Blvd		
4			
5	Lot Size (sq ft)	19409	19409
6	Landscape Open Space (LOS) (Sq Ft and %)	50%	50.1%
7	Perimeter LOS (Sq Ft and %)	N/A	N/A
8	Front Yard LOS (Sq Ft and %)	45%	55.8%
9	Native* Trees %	35%	23 / 44%
10	Native* Palms %	35%	14 / 48%
11	Native* Shrubs %	35%	429 / 47%
12	Native* Vines / Ground Cover %	35%	373 / 71%

*To determine appropriate native vegetation, the Institute for Regional Conservation ("IRC"), Natives for Your Neighborhood guide shall be used.

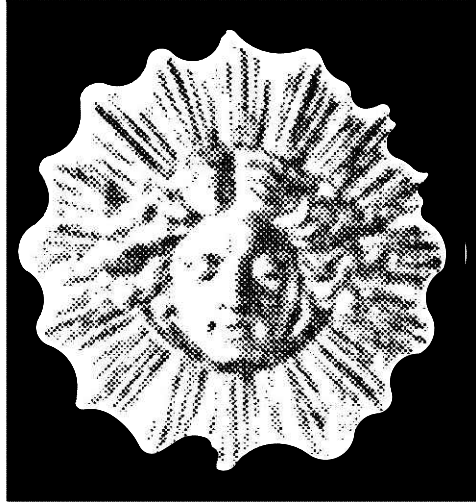
This table shall be included on the landscape species index sheet as prepared by a licensed landscape architect

REV BF 20220304

Landscape Details

PROJECT #: ARC-22-136 / ZON-22-101

LANG DESIGN GROUP
Landscape Architecture*Planning*Site Lighting
1820 2nd Ave North
Lake Worth, Florida 33461
(561) 688-9996 Fax (561) 688-9688
Email: langdesigngroup.com



30 YEARS OF AWARD WINNING DESIGN

30 YEARS OF AWARD WINNING DESIGN

30 YEARS OF AWARD WINNING DESIGN

30 YEARS OF AWARD WINNING DESIGN

30 YEARS OF AWARD WINNING DESIGN

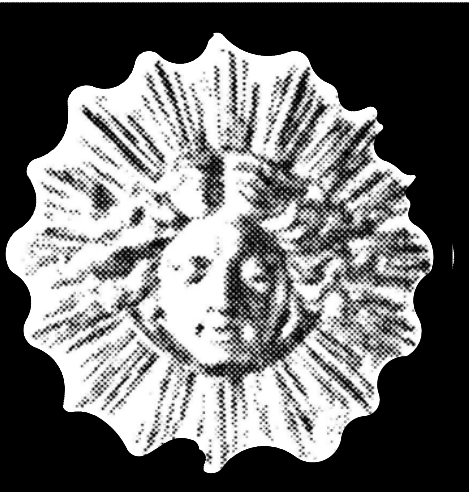
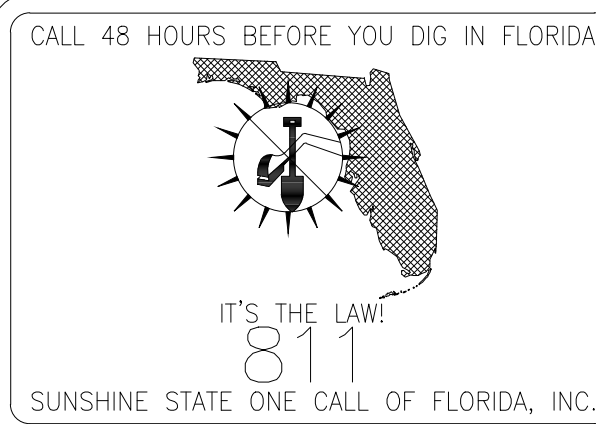
30 YEARS OF AWARD WINNING DESIGN

30 YEARS OF AWARD WINNING DESIGN

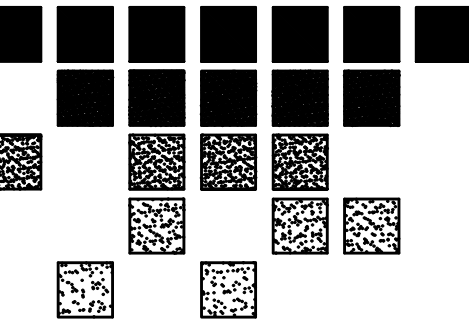
30 YEARS OF AWARD WINNING DESIGN

30 YEARS OF AWARD WINNING DESIGN

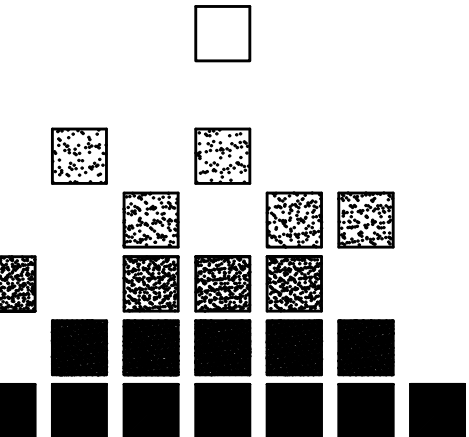
30 YEARS OF AWARD WINNING DESIGN



30 YEARS OF AWARD
WINNING DESIGN

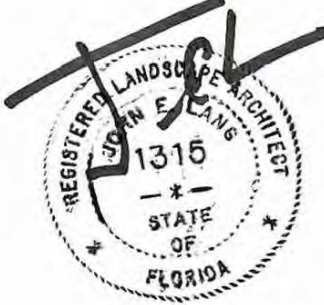


Holzer Residence
980 S Ocean Boulevard
Palm Beach, FL



REVISIONS		BY
05.23.22	MS	
06.7.22	MS	
6.27.22	MS	

THIS PLAN IS DIGITALLY
SIGNED AND SEALED
BY JOHN E. LANG



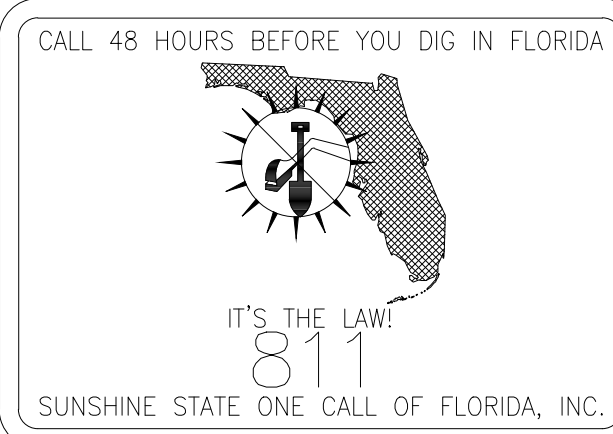
John E. Lang
Registered Landscape Architect
Florida License # 1315

DRAWN	DATE
MS	4.25.22
CHECKED	SCALE
JEL	

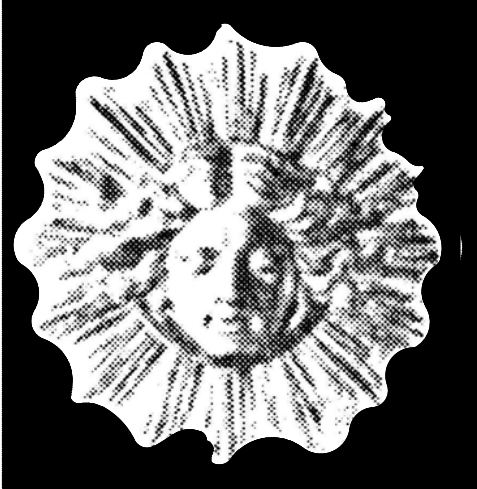
L-L201

PLANT LIST							
TOTAL QTY	Code	Native	Drought / water needs	Botanical Name / Common Name	Specifications, height and spread at time of planting	total native quantity	total native quantity and native %
	TREES:						
1	GEI	Native	L	Geiger Cordia sebestianna	BB, FG, 15'oa, 3" cal		1
1	SILVBT	Native	L	Buttonwood Conocarpus erectus Silver	BB, FG, 14'-16' oa x 8' spread, 3" caliper min		1
9	CLU12		l	clusia small leaf guttifera	BB, FG, 10-12'oa, std		
20	CB		L	Callophyllum Brasiliense Brazilian Beauty leaf	BB, FG, 18'-20' oa, std, limbed up 6-7', 3" caliper min , root barrier panels against driveway		
2	GL	Native	L	Gumbo Limbo Tree Bursera simaruba	BB, FG, 12" caliper specimen show picture to L.A 20' x 18'		2
19	EXIST SEAGRAPE	Native	L	Existing Seagrape trees	existing over 12' up to 40' oa		19
52 total trees						23 Total Native Trees	44% NATIVE TREES PROVIDED
	PALMS:						
14	TR	NATIVE	L	Coccothrinax Thatch Palm	BB, FG, 12-16'oa singles		14
11	CGM		L	Ccoconut Green Maypan	BB, FG, 12' GW min - 18' GW		
4	SAGO		L	Sago King Sago palm	1-2' CT single, 4-5'oa		
29 total palms						14 TOTAL NATIVE PALMS	48% NATIVE PALM
	HEDGES /SHRUBS						
32	AGAVE	NATIVE	L	Agave	variety tbs		34
40	ARB6		L	green Arboricola	7 gallon, 4-5' fib bush		
4	BV		l	bougainvillea vine	15 gallon color tbs on wall		
2	B25			Bougainvillea standard	25 gallon, 3" caliper color tbs		
53	CLUSIA 8		L	Clusia guttifera Small Leaf Clusia	6-7'oa, FTB Bush		
45	CAR			Carissa Microcarpa	3 gallon		
160	GIF		L	Green Island Ficus	3 gallon, 18" o.c.		

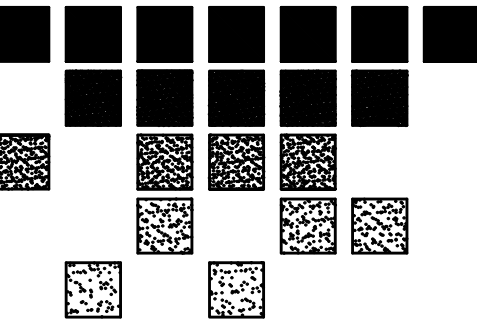
IT IS THE CONTRACTORS RESPONSIBILITY TO CALL 811 SPECIFICALLY "HOT WIRE" FIBER OPTIC CABLE



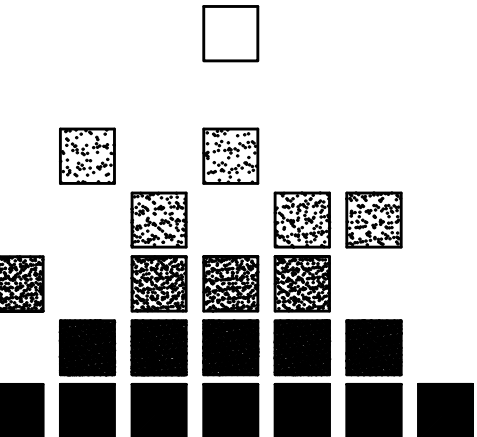
LANG
DESIGN
GROUP
Landscape Architecture*Planning*Site Lighting
1820 2nd Ave North
Lake Worth, Florida 33461
(561) 688-9996 Fax (561) 688-9688
Email: ldg@langdesigngroup.com



30 YEARS OF AWARD
WINNING DESIGN

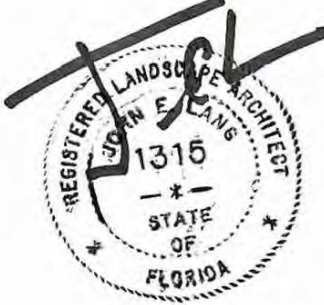


Holzer Residence
980 S Ocean Boulevard
Palm Beach, FL



REVISIONS		BY
05.23.22	MS	
06.7.22	MS	
6.27.22	MS	

THIS PLAN IS DIGITALLY
SIGNED AND SEALED
BY JOHN E. LANG



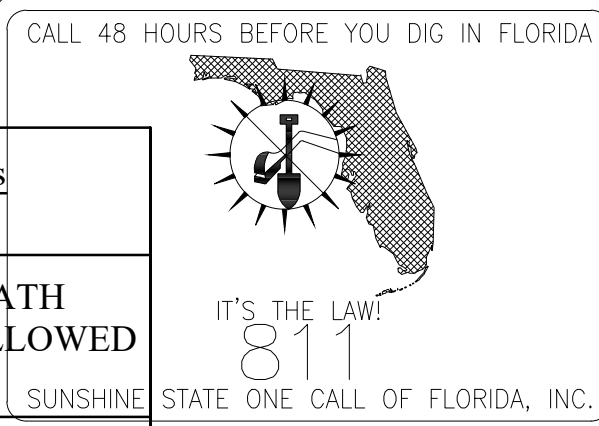
John E. Lang
Registered Landscape Architect
Florida License # 1315

DRAWN MS	DATE 4.25.22
CHECKED JEL	SCALE

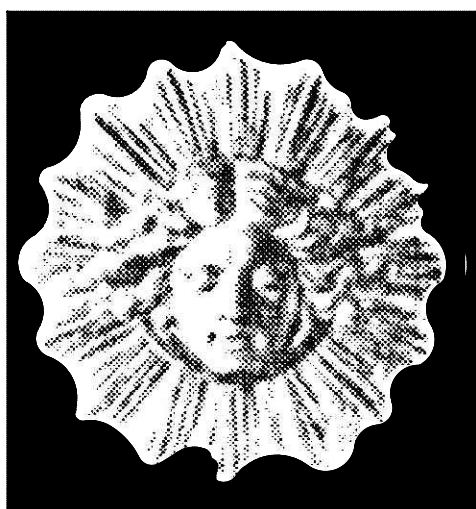
L-L202

	PLANT LIST						
TOTAL QTY	Code	Native	Drought / water	Botanical Name / Common Name	Specifications, height and spread at time of planting	total native quantity	total native quantity and
45	GLF3U			Green Island Ficus	30" ht, FTB Bush		
40	GO		L	Spathoglottis plicata or epinendrum	ground orchids color tbs 3 gallon		
165	IV	NATIVE	L	Ilex vomitoria nana shellings holly	4 gallon, 18" o.c.		165
45	H		M	Hibiscus color tbs	3 gallon, bush		
40	KINGM		m	Kings Mantle bush	3 glalon		
2	TH		M	Hibiscus color tbs	15 gallon, std, 5'oa color		
65	SEAG4	Native	L	Coccoloba Seagrape Bush	7 gallon, 3-4'oa		65
120	SILVERB3, SILVB	Native	L	Bush Buttonwood, Concocarpous erectus Silver	3 gallon		120
45	SILVERB	Native	L	Bush Buttonwood, Concocarpous erectus Silver	6-8'oa, FTB bush		45
	TPJ		M	Tabernaemontana pinwheel jasmine	3 gallon		
903 total plants						429 Total Native SHRUBS	47% NATIVE SHRUBS
	groundcovers/ vines						
18	AN		H	Annuals	trays		
25	CJ			Confederate jasmine Vine	6' trellis , removed and attach to site wall		
65	ORCHIDS		L	Orchids variety by owner	bare rooted plants		
8	PASS	Native	L	Passion Vine passiflora	3 gallon trellis		8
365	SUN	Native	L	dune Sunflower	1 gallon		365
30	TJM		L	Trachelospermum jasminoides	trays		
8	STEPH		L	Stephanotis vine	3 gallon, 18" o.c.		
519 total plants						373 Total Native VINES/GC	71% NATIVE VINES/GC
	Misc.						
	Sod			Pas Palum Seashore	sq ft laid end to end, sanded and rolled		
	Root Barrier		lin ft	Bio Root Barrier	per manufacturer's		

IT IS THE CONTRACTORS RESPONSIBILITY TO CALL 811 SPECIFICALLY "HOT WIRE" FIBER OPTIC CABLE



LANG DESIGN GROUP
Landscape Architecture*Planning*Site Lighting
1820 2nd Ave North
Lake Worth, Florida 33461
(561) 688-9996 Fax (561) 688-9688
Email: info@langdesigngroup.com



Holzer Residence
980 S Ocean Boulevard
Palm Beach, FL

REVISIONS	BY
05.23.22	MS
06.7.22	MS
06.7.22	MS

DRAWN	DATE
MS	4.25.22
CHECKED	SCALE
JEL	1/8"=1'-0"

L-LP100

PROPOSED EXTERIOR LIGHTING FIXTURES
LANDWARD OF THE C.C.C.L. NOT DEPICTED

Lighting Plan Key

Symbol	Fixture (brand and model #)	Total # of Fixtures	Type of mount	Mounting Height	Bulb wattage/type	Other Notes
	BEACHSIDE LIGHTING Pathlight (X1-S)	21	pole	20" to top fixture	amber or red 12 volt 2 watt LED-A R-300	DOWN/PATH ONLY ALLOWED
	INTELLIBRITE POOL LIGHT MODEL: 602120	3	submerged/ pool wall	varies	26 WATT, LED, amber or red	
	INTELLIBRITE SPA MODEL: 640172	0	submerged/ spa wall	varies	amber or red 18 WATT, LED,	

NOTE: Interior swimming pool and pool deck lights shall be turned off while the pool is closed during sea turtle nesting season. Where leatherback turtle nesting occurs during the period of March 1 through October 31). The use of an automatic timer is acceptable.

SPEC: 3 TOTAL IN POOL

LARGE SUBMERGED
LED-POOL LIGHT
FROM WWW.PENTAIRPOOL.COM
INTELLIBRITE
LED, 26 WATT

CONTAINS UNIQUE LENS
WHICH
DIRECTS LIGHT
TO BOTTOM OF POOL

SPEC: 0 TOTAL IN SPA/SUNSHLF

SMALL SUBMERGED
LED-SPA LIGHT
FROM WWW.PENTAIRPOOL.COM
INTELLIBRITE
LED, 18 WATT

CONTAINS UNIQUE LENS
WHICH DIRECTS LIGHT TO
BOTTOM OF SPA

PENTAIR



IntelliBrite® 5G
Underwater LED Lights

TURTLE FRIENDLY
IntelliBrite 5G Lights by Pentair are among the brightest, most energy-efficient underwater LED lights available. The new IntelliBrite 5G Turtle Light consumes a mere 26 watts. A model for spa outlets even uses less energy—only 18 watts. No matter the choice, each features a custom reflector and innovative lens design that distributes more uniform lighting without the "hot spots" or glare common with other lights.
The IntelliBrite 5G Turtle light adheres to the Florida Wildlife Commission's guidelines while backing swimming pools in a soothing red/orange hue. It creates the perfect nighttime ambience while protecting curious, hard-shelled "guano" that are naturally attracted to bright lights.

Lamp Source	Available in 12 and 24V • 12V LED • 24V LED • 24V LED • 24V LED
Approved Use	Swimming pools and hot tubs • Salt water • Not approved for salt water
Construction	Corrosion resistant
Wiring Rating	Wet location only
Standard Inclusions	Standard cable • 10' stainless steel

Remove Transformers Order Separately
Pentairpool.com | 800-431-7132
© 2012 Pentair. All rights reserved. Pentair and the Pentair logo are trademarks of Pentair. IntelliBrite is a registered trademark of Pentair. IntelliBrite 5G is a registered trademark of Pentair. IntelliBrite 5G Turtle Light is a registered trademark of Pentair. IntelliBrite 5G Turtle Light is a registered trademark of Pentair. IntelliBrite 5G Turtle Light is a registered trademark of Pentair.

X1-S

The X1-S is an unobtrusive, low-voltage downlight. More compact than a shaded path light, its minimalist design allows attention to focus on the lamp's extra-wide flood effect, not the fixture itself.

Construction All brass components, 1/8" (3mm) thick brass housing, 1/2" schedule 40 brass stem

Lens Tempered soda lime glass

Voltage 12 Volt AC/DC with integral driver (9-15V input, dimmable below 9V). Remote transformer required.

Fixture Height Custom stem heights are available upon request. Standard overall height is 20". 20" (51 cm) Custom height (in inches)

Lamps Trac dimmable MLV-H4 type. Baseless. Cordless. Lumens. Efficacy

One SP52 LED 2 Pin Amber (1000)	2W-A-ND	40° / 114"	18	31	14
One SP52 LED 2 Pin Amber (1000)	2W-RQ-ND	40° / 114"	32	32	14

Optical BGSB Baseless Cordless Lumens Efficacy

Accessories BGSB Baseless Cordless Lumens Efficacy

Mounting Accessories 1/2" male threads. Mounts into any standard (hole or) Brass Surface Box for surface-mount applications on concrete or steel. Includes internal brass collar and stainless steel lag screws. 4.25" (11cm) diameter x 2.0" (5cm) high.

Accessories GS2 Heavy-duty ground spike GS2BC Heavy-duty ground spike with cast brass cap GS3R Heavy-duty ground spike with brass cap for telescoping fixture rise JB Cast brass junction box

Finish: Unfinished is standard. No specification required. The fixture will weather to a natural patina. The patina process is nature with brass and copper. Rate of patina and eventual color is dependent upon climate and proximity to the ocean. Thus, Beachside does not guarantee any specific appearance.

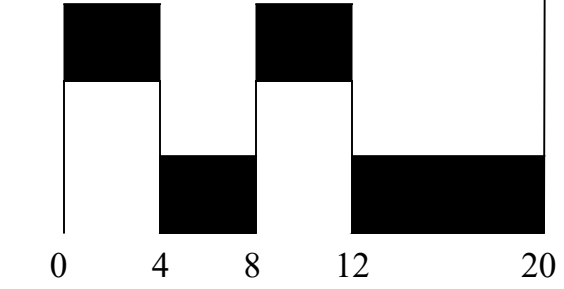
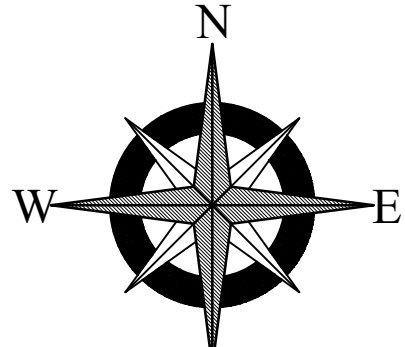
SUITABLE FOR HIDEOUT AND OUTDOOR USE

X1-S-20 on JB **X1-S-20 on BSB with BGSB**

Project _____ **By** _____ **Date** _____

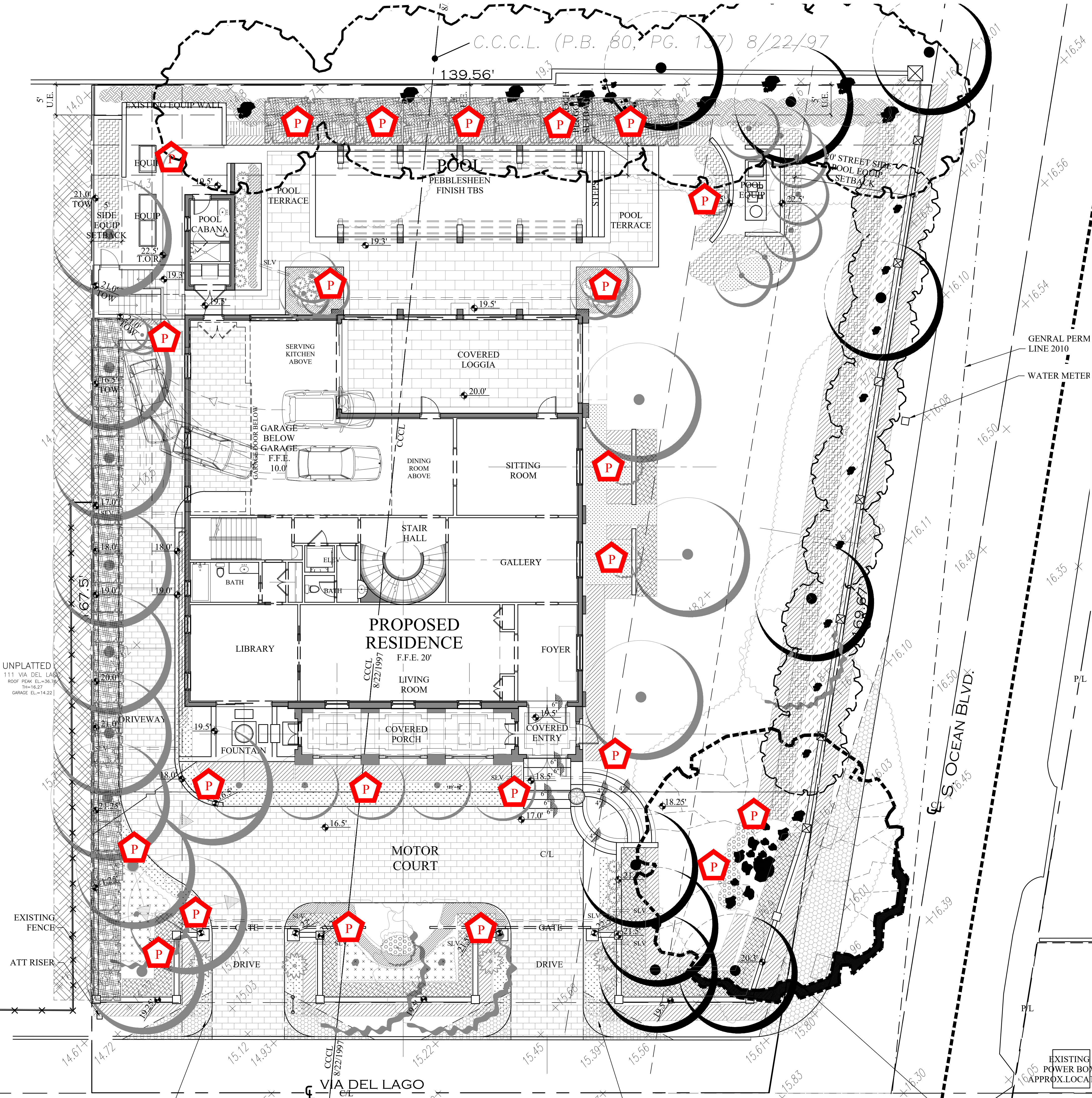
X1-S _____ **Fixture Height** _____ **Lamp / Optic** _____ **Accessory(ies)** _____

BEACHSIDE LIGHTING • 800-405-0732 • www.BeachsideLighting.com • Made in Hawaii, USA



PROJECT #: ARC-22-136 / ZON-22-101

Landscape Lighting Plan



8' x 15' SITE TRIANGLE - NO OBSTRUCTIONS OVER 30" HEIGHT AND LIMBED UP 8-9"

8' x 15' SITE TRIANGLE - NO OBSTRUCTIONS OVER 30" HEIGHT

SITE TRIANGLE - NO OBSTRUCTIONS OVER 30" HEIGHT



Know what's below.
Call before you dig.



LOCATION MAP
N.T.S.

LEGEND

- EXISTING ELEVATION PER WALLACE SURVEYING, INC. (NAVD)
- PROPOSED ELEVATION (NAVD)
- FLOW DIRECTION
- DOWNSPOUT
- AREA DRAIN
- EXFILTRATION TRENCH
- HYDROPLAST DRAIN BASIN W/Baffle

NOTES:
1. SITE DRAINAGE PLAN TO MEET TOWN OF PALM BEACH STORMWATER REQUIREMENTS. DURING DETAILED CONSTRUCTION PLAN PREPARATION, ADDITIONAL DRAINAGE IMPROVEMENTS MAY BE INCORPORATED INTO THE SITE DRAINAGE PLAN FROM THAT SHOWN. IF NECESSARY, STEM WALLS OR OTHER ITEMS MAY BE REQUIRED ALONG THE PROPERTY LINES TO PREVENT RUNOFF ONTO ADJACENT PROPERTIES.
2. ALL PORTIONS OF EXFILTRATION TRENCHES ADJACENT TO PLANT MATERIAL HAVING AN INVASIVE ROOT SYSTEM SHALL BE PROTECTED WITH A ROOT BARRIER.

CIVIL PLANS FOR:
PROPOSED RESIDENCE
980 SOUTH OCEAN BLVD
PALM BEACH, FLORIDA

Project #: 22-004
Issue Date: 05/23/22
Drawn By: AMW
Chkd By: AMW
Scale: As Shown



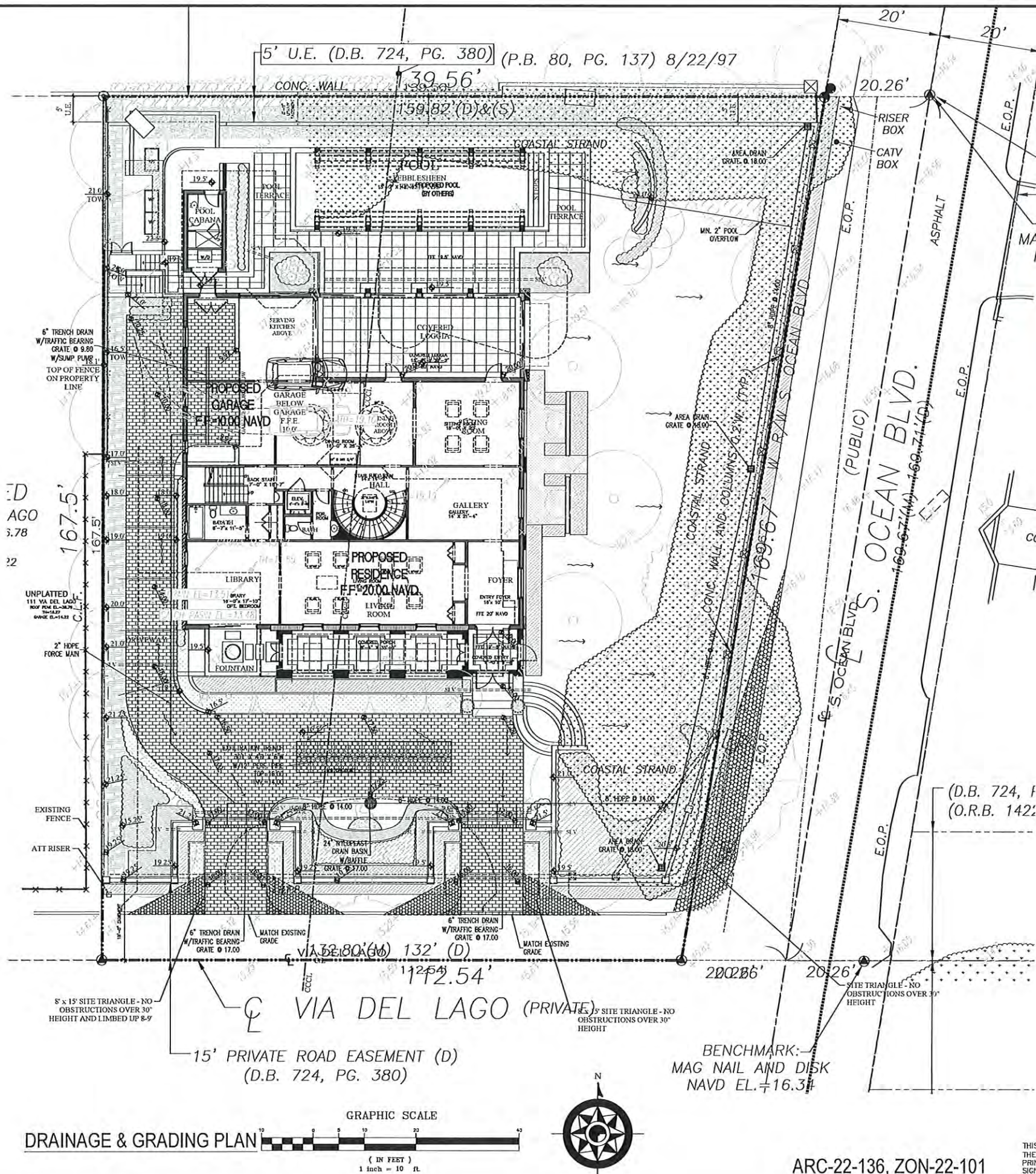
SHEET TITLE:
DRAINAGE & GRADING PLAN

SHEET NUMBER:
C-1

Andre M Webster

Digitally signed by
Andre M Webster
Date: 2022.06.27
11:32:58 -04'00'

THIS ITEM HAS BEEN ELECTRONICALLY SIGNED AND SEALED BY ANDRE M. WEBSTER, P.E. ON THE DATE AND/OR TIME STAMP SHOWN USING A DIGITAL SIGNATURE. PRINTED COPIES OF THIS DOCUMENT ARE NOT CONSIDERED SIGNED AND SEALED AND THE SIGNATURE MUST BE VERIFIED ON ANY ELECTRONIC COPIES.



PROPOSED RESIDENCE
980 SOUTH OCEAN BLVD.
PALM BEACH, FLORIDA

STORMWATER MANAGEMENT CALCULATIONS

SITE PLAN DATA

Total Lot Area = 21,114 sq. ft. ±

Impervious Area (footprint, drive, walkways, pool, decking) = 10,672 sq. ft. ±

Pervious Area = 10,442 sq. ft. ±

ESTIMATED RUNOFF VOLUME

Impervious Runoff Volume:
2" x 10,672 sq. ft. x 1 ft./12 in. = 1,779 cu. ft.

Pervious Runoff Volume:
0.4" x 10,442 sq. ft. x 1 ft./12 in. = 348 cu. ft.

Total Volume to be Retained = 2,127 cu. ft.

EXFILTRATION TRENCH #1

L = Total Length of Trench Provided = 30 ft

W = Trench Width = 6 ft

K = Hydraulic Conductivity = 0.0005 cfs/sq. ft. per ft. of head

HZ = Depth to Water Table = 4.00 ft

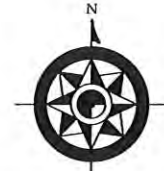
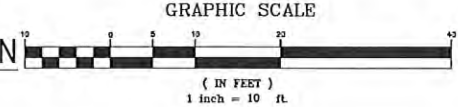
DU = Non-Saturated Trench Depth = 4.00 ft

DS = Saturated Trench Depth = 0.00 ft

V = Volume Treated = 2,541 cu. ft.

RETENTION PROVIDED IN TRENCH = 2,541 cu. ft.

DRAINAGE & GRADING PLAN



ARC-22-136, ZON-22-101



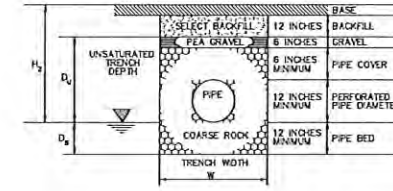
Know what's below.
Call before you dig.



CIVIL ENGINEERING CONSULTING, INC.
CERTIFICATE OF AUTHORIZATION #23369
8195 WHITE ROCK CIRCLE
BOYNTON BEACH, FL 33436
Phone: 561-947-0398
www.cec-fl.com

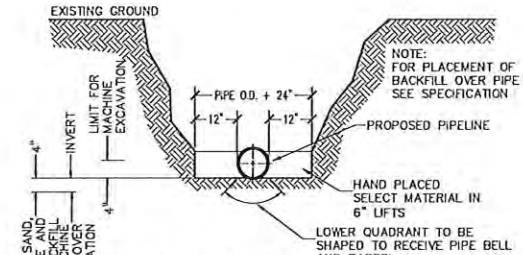
andre@cec-fl.com

TYPICAL EXFILTRATION TRENCH



$$L = \frac{V}{K(H_2W + 2H_2D_0 - D_0^2 + 2H_2D_1) + (1.39 \times 10^{-4})WD_0}$$

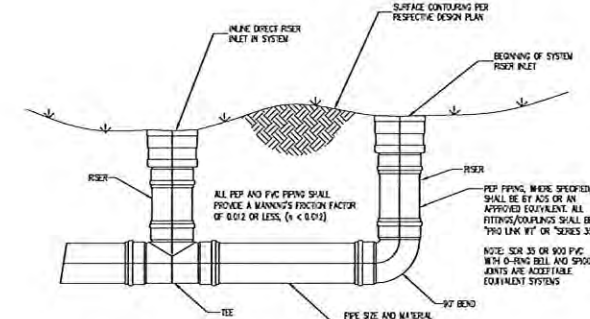
L = LENGTH OF TRENCH REQUIRED (FEET)
V = VOLUME TREATED (ACRE-INCHES)
W = TRENCH WIDTH (FEET)
K = HYDRAULIC CONDUCTIVITY (CFS/FT.² - FT.HEAD)
H₂ = DEPTH TO WATER TABLE (FEET)
D₀ = NON-SATURATED TRENCH DEPTH (FEET)
D₁ = SATURATED TRENCH DEPTH (FEET)



- EXCAVATION SIDE SLOPE SHORING, ETC. SHALL CONFORM TO O.S.H.A. STANDARDS. COMPACT TRENCH BACKFILL TO 98% OF MAXIMUM DENSITY IN ACCORDANCE WITH AASHTO T-180. DENSITY TESTS SHALL BE TAKEN AT 12" LIFTS EVERY 100' IN PUBLIC RIGHTS-OF-WAY AND 200' IN EASEMENTS.
 - BEDDING SHALL CONSIST OF IN-SITU GRANULAR MATERIAL OR WASHED AND GRADED LIVEROCK 3/8"-7/8" SIZING. UNSUITABLE IN-SITU MATERIALS SUCH AS MUCK, DEBRIS, HARDPAN AND LARGER ROCKS SHALL BE REMOVED.
 - THE PIPE SHALL BE PLACED IN A DRY TRENCH.
 - BACKFILL SHALL BE FREE OF UNSUITABLE MATERIAL SUCH AS LARGE ROCK, MUCK, HARDPAN AND DEBRIS.
 - SEE SEPARATE DETAIL FOR "PIPE INSTALLATION UNDER EXISTING PAVEMENT-OPEN CUT."
- THE AFFECTED AREA SHALL BE RESTORED TO EQUAL OR BETTER CONDITION OR AS SPECIFIED IN PERMIT/CONTRACT DOCUMENTS.

TRENCH AND BACKFILL DETAIL

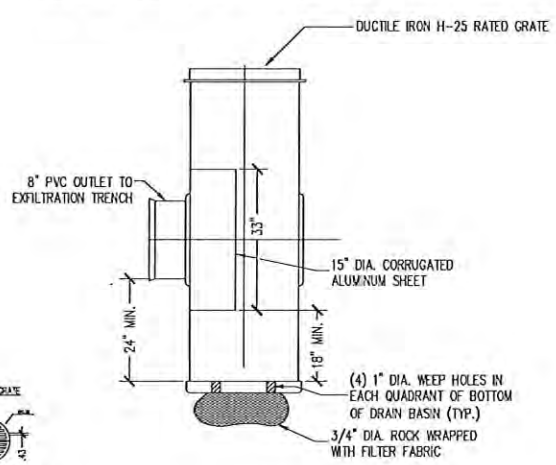
N.T.S.



DIRECT RISER INLET: TYPICAL INSTALLATION

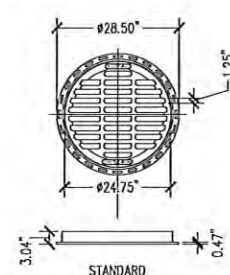
N.T.S.

24" NYLOPLAST DRAIN BASIN



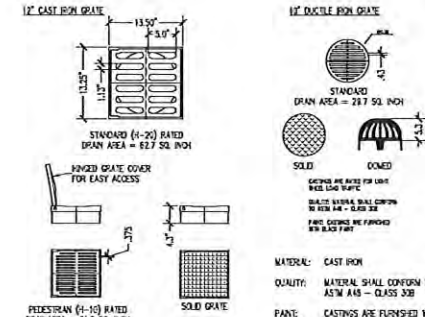
NOTE:
INLET TO HAVE MIN. 24" SUMP AND MIN. 18" CLEARANCE
BETWEEN BOTTOM OF BAFFLE AND BOTTOM OF INLET

24" DUCTILE IRON GRATE



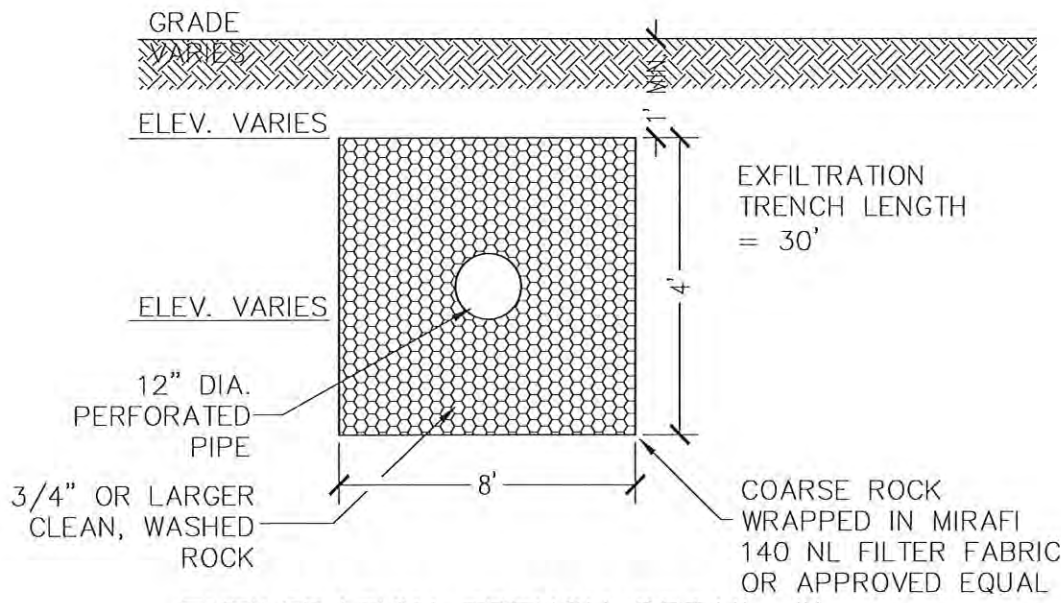
APPROX. DRAIN AREA = 194.60 SQ. IN.
APPROX. WEIGHT WITH FRAME = 124.00 LBS.
STANDARD GRATE HAS H-25 HEAVY DUTY RATING
SOLID COVER HAS H-25 HEAVY DUTY RATING
PEDESTRIAN GRATE HAS H-10 MEDIUM DUTY RATING

QUALITY: MATERIALS SHALL CONFORM TO ASTM A536 GRADE 70-50-05
MATERIAL: DUCTILE IRON
PAINT: CASTINGS ARE FURNISHED WITH A BLACK PAINT LOCKING DEVICE AVAILABLE UPON REQUEST PRICE INCLUDES FRAME & GRATE/COVER



AREA DRAIN DETAIL

NOTE:
TYPE OF GRATES & INLETS TO BE COORDINATED WITH ENGINEER & LANDSCAPE ARCHITECT
PIPE MATERIAL MAY BE PVC, ADS, NDS, OR APPROVED EQUAL



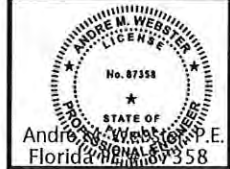
EXFILTRATION TRENCH DETAIL #1

N.T.S.

Andre M Webster

Digitally signed by
Andre M Webster
Date: 2022.06.27
11:33:18 -04'00'

Project #:	22-004
Issue Date:	05/23/22
Drawn By:	AMW
Chkd By:	AMW
Scale:	As Shown



SHEET TITLE
DRAINAGE &
GRADING
DETAILS

SHEET NUMBER:

C-2

ARC-22-136, ZON-22-101

THIS ITEM HAS BEEN ELECTRONICALLY SIGNED AND SEALED BY ANDRE M. WEBSTER, P.E. ON THE DATE AND/OR TIME STAMP SHOWN USING A DIGITAL SIGNATURE. PRINTED COPIES OF THIS DOCUMENT ARE NOT CONSIDERED SIGNED AND SEALED AND THE SIGNATURE MUST BE VERIFIED ON ANY ELECTRONIC COPIES.



Know what's below.
Call before you dig.



CIVIL ENGINEERING CONSULTING, INC.
CERTIFICATE OF AUTHORIZATION #33369
8195 WHITE ROCK CIRCLE
BOYNTON BEACH, FL 33436
Phone: 561-847-0398
www.cec-fl.com

andre@cec-fl.com

No.	Revisions:	Date:

CIVIL PLANS FOR:
PROPOSED RESIDENCE
980 SOUTH OCEAN BLVD
PALM BEACH, FLORIDA

Project #:	22-004
Issue Date:	05/23/22
Drawn By:	MAW
Chkd By:	AMW
Scale:	As Shown

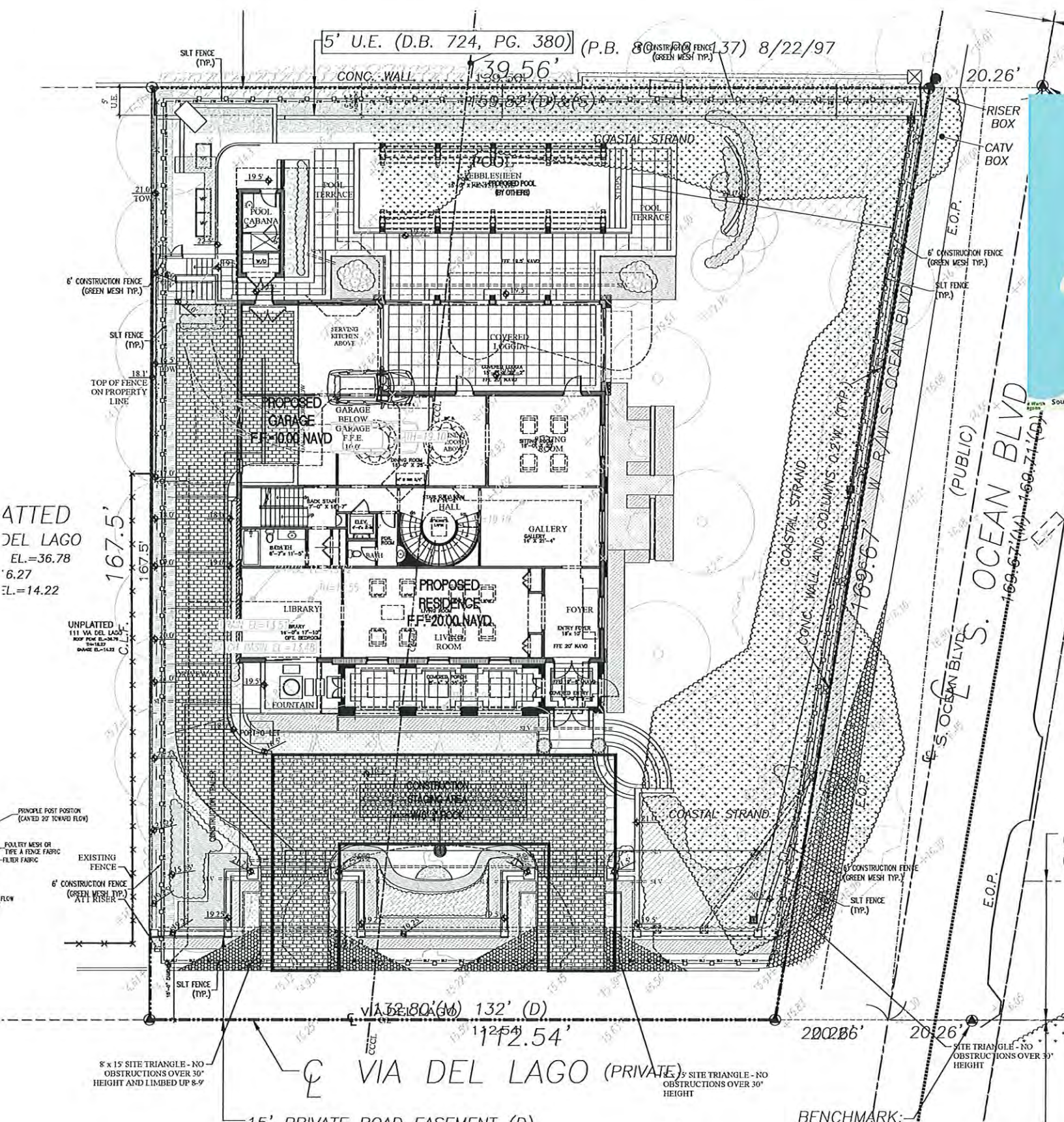


Andre M Webster
Digitally signed by
Andre M Webster
Date: 2022.06.27
11:33:40 -04'00'

SHEET TITLE
**EROSION CONTROL
AND CONSTRUCTION
STAGING PLAN**

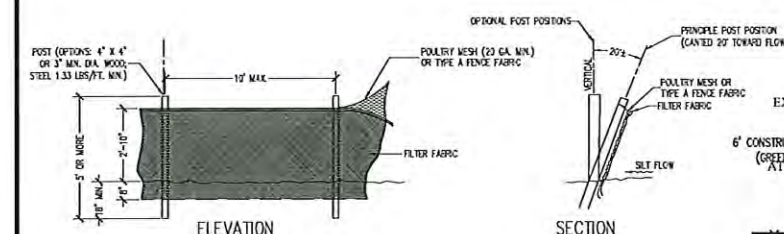
SHEET NUMBER:

EC-1



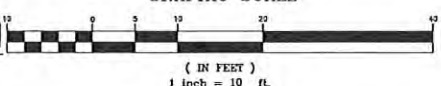
LEGEND

- EXISTING ELEVATION PER WALLACE SURVEYING, INC. (NAVD)
- SILT FENCE
- CONSTRUCTION FENCE
- CONSTRUCTION STAGING AREA



SILT FENCE DETAIL
N.T.S.

EROSION CONTROL AND CONSTRUCTION STAGING PLAN



ARC-22-136, ZON-22-101

THIS ITEM HAS BEEN ELECTRONICALLY SIGNED AND SEALED BY ANDRE M. WEBSTER, P.E. ON THE DATE AND/OR TIME STAMP SHOWN USING A DIGITAL SIGNATURE. PRINTED COPIES OF THIS DOCUMENT ARE NOT CONSIDERED SIGNED AND SEALED AND THE SIGNATURE MUST BE VERIFIED ON ANY ELECTRONIC COPIES.

