

PROPOSED
Lake Worth Inlet
South and Central Mooring Fields
PROJECT SPONSOR
CITY OF RIVIERA BEACH

Justifications for a Managed Mooring Field

- The Lake Bottom beneath both proposed mooring fields belongs to the State of Florida and is governed by the FL Department of Environmental Protection State lands and through permitting.
- Damage to seagrass and other resources by continued and or repetitive anchor and chain usage.
- Anchors drag and hook other vessels anchor lines, causing theirs anchors to drag as well.
- Vessels breaking loose causes impact damage to private docks, marinas, vessels, and seawalls.

Unanswered Questions

- Are they discharging sewerage? Is there a sewerage pump-out vessel available in PB County? Where do these vessels go for sewerage pump-out?
- Where do they dump their trash currently?
- Who looks after vessels taking on water, dragging anchor, and or chafing anchor lines?

- How do we ascertain vessel ownership, contact information, and responsibility?
- Are there any rules and regulations in the anchorage? Examples: halyards banging, laundry hanging, noise.
- Anchor chains and their rode's fail for several reasons.
- Insufficient component size necessary for storms.
- Anchor line wears without chafe gear, or chafe gear wears and fails at the chock or deck edge
- Nylon loses tensile strength when overheated and is prone to failure
- Moorings will be held into the ground by Helices and sized for certain size/weight vessels to survive a load that an engineer determined necessary to survive a cat rated level of storm.
- Each mooring is required, during hurricane season, to have a painter (rope between the mooring and vessel) that New England Ropes has developed. It floats, does not overheat in chafe gear and far exceeds Nylon rope strength.
- Riviera Beach, Palm Beach County, Florida Inland Navigation District, Florida Fish and Wildlife Commission and Waterfront Homeowners, in coordination with LagoonKeepers.Org, continuously pay to have sunk or damaged vessels removed that come from anchorages.

ESTIMATED COSTS

Estimated start-up costs at this point are \$2,200,000, slated to be funded out of the Riviera Beach Marina Capitol Budget. Hopefully, the city will be able to obtain some grant funding assistance from other agencies.

General Draft Rules and General Information

- Perimeter buoys and mooring balls will be sized using state standards, officially numbered, and placed in its GIS location. Currently, there are two mooring field locations being planned. The first, the South field, lies between the ICW and the Palm Beach Channel-South of the Port of PB Turning Basin down to about 43rd St. WPB. The second, the Central Field, lies between the Riviera Beach City Marina and south of the Blue Heron Bridge, and west of the ICW Channel along the city shoreline.
- We are currently looking at several different manufactures of vessels. The first, the Pump out vessel will need to hold between 500 and 1,000 gal of sewerage, and keep the operator dry in inclement weather. The second vessel will be used as a shuttle

boat during set hours to be determined. This reduces dingy use for safety reasons. The city marina will house the vessels when not in operation.

- Vessels being stored or barely used will use the pump-out flag system when needing a pump out. Any liveaboard vessel determined by FL law or Rule or occupied vessels will be required to pump-out on a regular basis TBD based on holding tank size and number of people aboard.
- Every vessel staying 10 days or more must have a valid and current state registration or USCG documentation and be capable of navigation including a running engine of sufficient size. Dogs must have an up-to-date rabies shot, and not bark incessantly disturbing other vessels or shoreline residents.
- Every Vessel will be required to register online, by phone, or by pulling into the fuel dock to register. After hour vessel arrivals will be required to check in by 9:00 AM the following morning or on that day by any of these 3 methods. Online will be the two mooring field layouts. Each mooring ball will be identified by a number and the max length and draft of a vessel for that particular mooring ball. Additionally, the mooring fields rules and regulations will be posted along with a location map to services,

supplies, food, entertainment and public transportation. Shower and restrooms for the mooring field are located at the marina and additional have been permitted to be built. Rates will be posted as well for: daily, 10 days or less, monthly or annually. Inspections of cleats, size and number, location, backing plates, minimum line sizes etc. of vessels during hurricane season will be required as well as a running engine and confirmation whether or not you will be aboard during a tropical storm event.

- Aside from the shuttle boat, 2 dingy docks for vessels mooring field customers will be available-one at the north end of the marina, and one at the south end.
- There will be no fueling of any vessel in the mooring field, nor any discharge of oil, oily water, or sewerage into the waters of the mooring field or adjacent waters.
- There will be no work allowed on vessels in the mooring field except minor maintenance.
- By FL State Law, there will be no anchoring within a mooring field or within a specified distance from a mooring field.
- Occupied moored vessels will have their Garbage collected by the pump-out vessel, provided it is in approved bags.

- Occupied vessels will be required to notify the dockmaster if they intend to leave their vessel for one or more nights.
- There will be Parking areas designated for mooring field occupants. Vehicles must be registered to the moored vessels occupant or by special authorization.

The city intends to hire another dedicated on the water police officer to police the mooring field by MOU with PBSO or FWC as well as enforce other areas within the waters of Riviera Beach Jurisdiction. This officer will be paid out of the annual Mooring Field operating budget to be determined as part of the upcoming City Budget.

A large percentage of the rules etc. will be required by the DEP permit process of each mooring field.

**City of Riviera Beach
Managed Mooring Field Project
Central and South Lake Worth Inlet**

July 12, 2022

Prepared by:



**Marina Consultant
J. H. Sprague Consulting**

**Marine Engineering Consultant
Sea Diversified, Inc.**



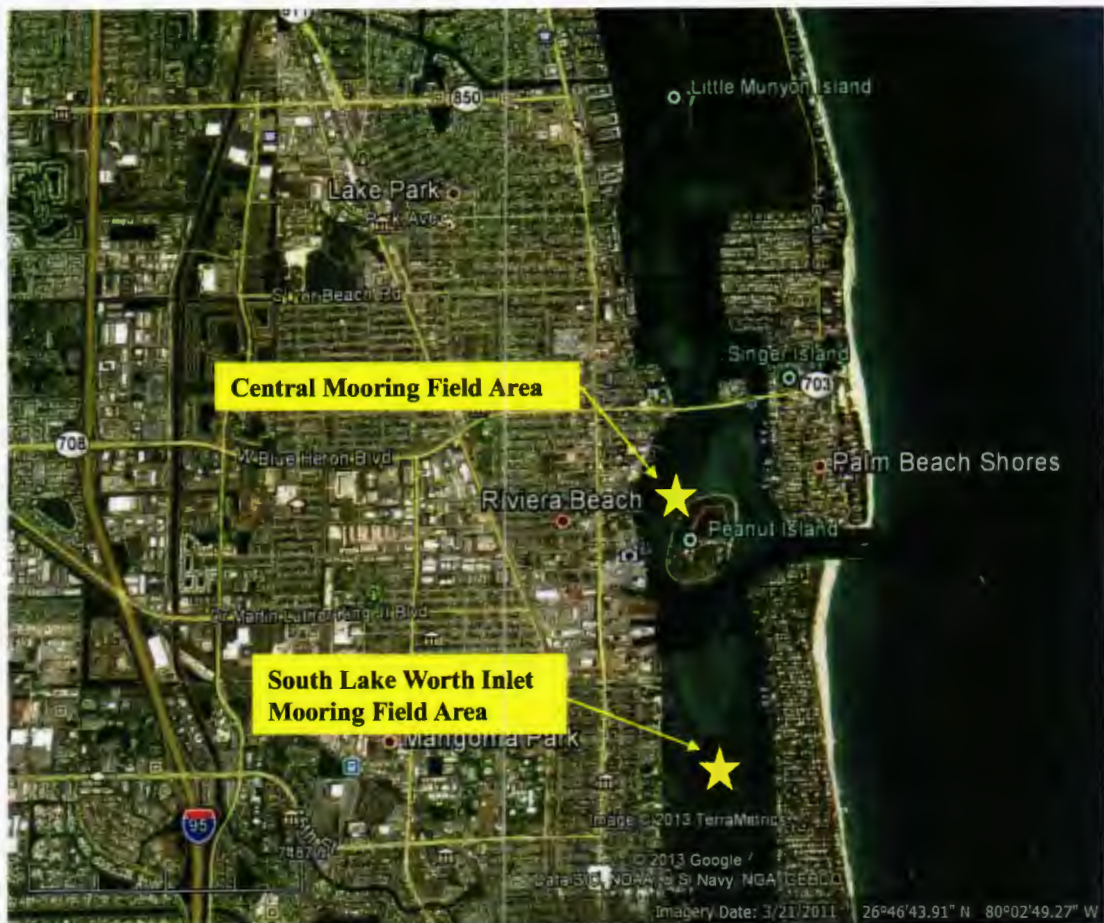


PROJECT VICINITY MAP



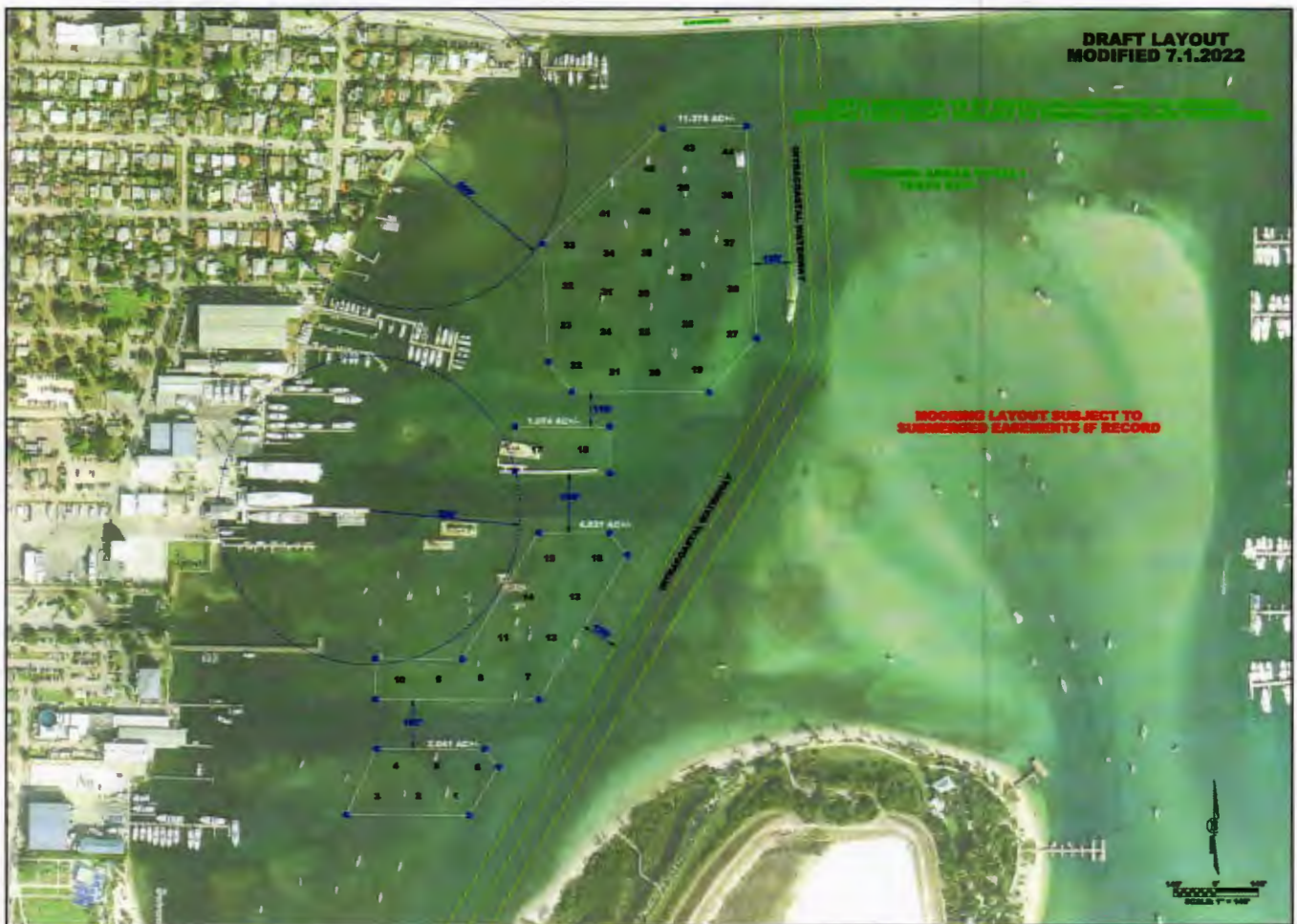


PROJECT AERIAL MAP





CENTRAL MOORING FIELD





SOUTH LAKE WORTH INLET MOORING FIELD

