

PHIPPS OCEAN PARK

June 1st, 2022

Design Development

TABLE OF CONTENTS

| | |
|----------------------------|----|
| 2021 Master Plan | 2 |
| Site Plan | 3 |
| Canopy Plan | 4 |
| Main Entrance | 5 |
| Gold Coast Gateway | 8 |
| Dune Playground | 12 |
| Outdoor Classroom | 16 |
| Little Red Schoolhouse | 23 |
| Great Lawn | 26 |
| Wildflower Garden | 30 |
| Horizon Plateau | 36 |
| Concessions Area | 41 |
| Coastal Restoration Center | 47 |
| Parking Lots | 50 |

jungles

Legend

1. Two-way Main Entrance into Park

Celebrate the scale and beauty. Entry portal like LLNPP. Entrance more central to park. Open major view to relocated school house and flexible open space. View takes in great lawn for larger community events and play.

2. Little Red Schoolhouse Center

Relocated Schoolhouse a few feet up the dune, nestled into the grove of Specimen Strangler Fig trees.

3. Great Lawn

Open space that embraces the sky, accommodates groups of all sizes. Community special events programming.

4. Horizon Plateau

Gathering area with open views to the horizon line over the Atlantic Ocean.

5. Connector Lawns for traversing grade**6. Nature / Pedestrian Paths****7. Sand Paths to Beach**

Emergency equipment access.

8. ADA Accessible Path

Accommodates maintenance and patrol vehicles.

9. Two-way Park Entrance

Park and tennis court parking.

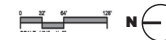
10. One-way Exit from Main Park Parking Area**11. Stone Wall around Public Works Center****12. Restricted Vehicular / Pedestrian Circulation****13. Picnic Areas****14. Thatched Shelters****15. Beach Showers / Drinking Fountains****16. Parking Areas**

Permeable paving, minimized to allow more contiguous planting.

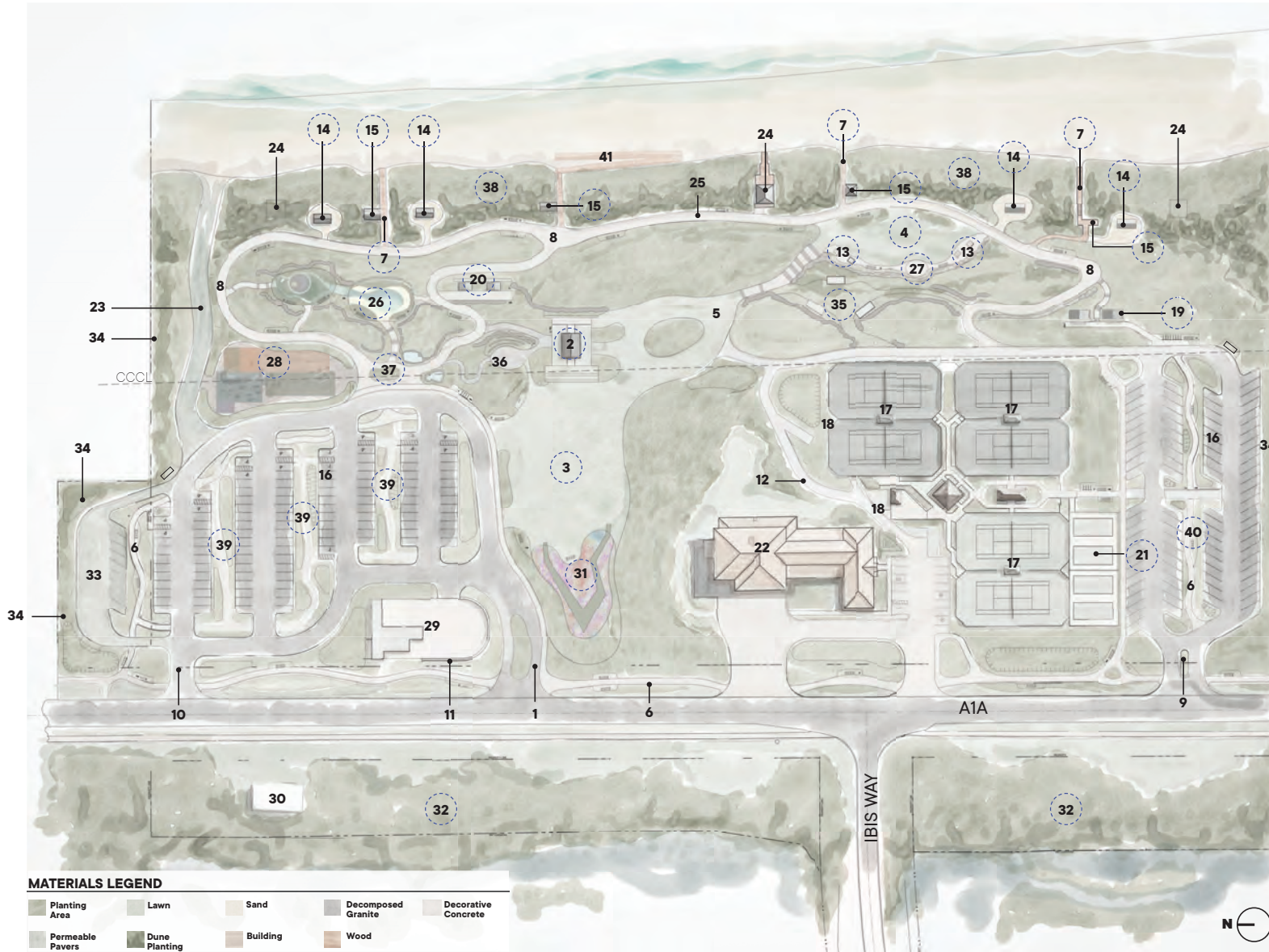
17. Tennis Courts**18. Storage beneath Horizon Plateau****19. Physical Barrier for separating Fire Station Garden/Practice area and Tennis back of house****20. Upgrade Existing Restrooms****21. New Restrooms for Little Red Schoolhouse Center****22. New Pickleball Courts****23. Existing Fire Station****24. Existing Utility Enclosure****25. Beach Nourishment Access Path****26. New Lifeguard Stand****27. Dune Crest Path****28. New Playground****29. Service Path****30. Nursery Propagation****31. Public Works Area****32. Water Utilities to be Screened****33. Water Element****34. Existing Mangroves to Remain****35. Grass Pave Overflow Parking****36. Ibis Way Improvements****37. Dense Vegetative Buffer**

Materials Legend

| | | | | | | |
|------------------|---------------|------------|-------|--------------------|---------------------|--------------|
| Planting Area | Lawn | Grass Pave | Water | Decomposed Granite | Decorative Concrete | Oolite Walls |
| Permeable Pavers | Dune Planting | Building | Wood | Mulch | Sand | |



*Total Parking: 265



Legend

- 1. Two-way Main Entrance into Park**
Entry portal to celebrate the scale and beauty.
Open major view to relocated school house and flexible open space.
View takes in great lawn for larger community events and play.
- 2. Little Red Schoolhouse Center***
Relocated Schoolhouse a few feet up the dune, nestled into the grove of Specimen Strangler Fig trees.
- 3. Great Lawn***
Open space that embraces the sky, accommodates groups of all sizes.
Community special events programming.
- 4. Horizon Plateau***
Gathering area with open views to the horizon line over the Atlantic Ocean.
- 5. Connector Lawns for traversing grade**
- 6. Nature / Pedestrian Paths**
- 7. Sand Paths to Beach***
Emergency equipment access.
- 8. ADA Accessible Path**
Accommodates maintenance and patrol vehicles.
- 9. Two-way Park Entrance**
Park and tennis court parking.
- 10. One-way Exit from Main Park Parking Area**
- 11. Stone Wall around Public Works Center**
- 12. Restricted Vehicular / Pedestrian Circulation**
- 13. Picnic Areas***
- 14. Beach Pavilions***
- 15. Beach Showers / Drinking Fountains***
- 16. Parking Areas**
Permeable paving, minimized to allow more contiguous planting.
- 17. Tennis Courts**
- 18. Vegetative Barrier for separating Fire Station Garden/Practice area and Tennis back of house**
- 19. Upgraded Existing Restrooms***
- 20. New Restrooms for Little Red Schoolhouse Center***
- 21. Area for Pickleball Courts***
- 22. Existing Fire Station**
- 23. Beach Nourishment Access Path**
- 24. Location for Future Lifeguard Stands**
- 25. Dune Crest Path**
ADA and Vehicle Accessible
- 26. Dune Playground***
- 27. Sculpture at Horizon Plateau***
- 28. Coastal Restoration Center***
- 29. Public Works Area**
- 30. Water Utilities to be Screened**
- 31. Wildflower Garden***
- 32. Mangrove Restoration Area***
- 33. CRC Extension - Grass Test Plot/Overflow Parking Spaces**
- 34. Dense Vegetative Buffer**
- 35. Food Concession Area***
- 36. Outdoor Classroom**
- 37. Gold Coast Gateway***
- 38. Beach Dune Restoration***
- 39. North Rain Garden***
- 40. South Rain Garden***
- 41. ADA Access to Beach**



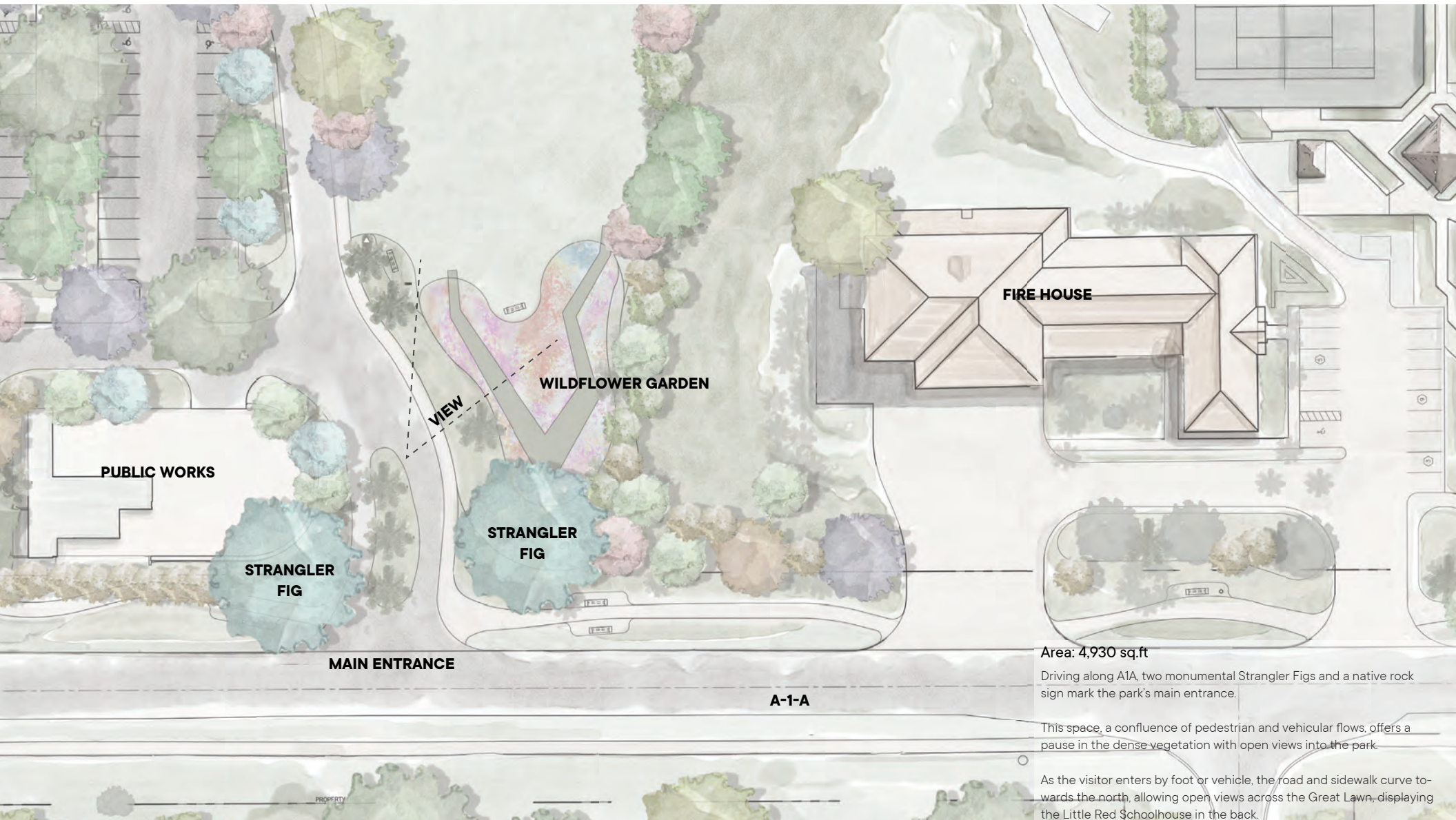
LEGEND

- (21) *Quercus virginiana* - Live Oak*
- (17) Large Canopy Tree - Pond Apple, Strangler Fig
- (22) *Bursera simaruba* - Gumbo Limbo
- (45) *Coccoloba uvifera* - Seagrape
- (6) *Ficus aurea* - Strangler Fig
- (22) Large Accent - Gumbo Limbo, Seagrape
- (97) Medium Tree Type 1
False Mastig, Willow Busic
- (19) Medium Tree Type 2
Spanish Stopper, White Stopper, Inkwood, Black Ironwood
- (31) Medium Tree Type 3
Satin Leaf, Common Torchwood, *Simaruba glauca*
- (237) Small Tree Type 1
Jamaican Caper, Guiana Plum, Pigeon Plum
- (44) Small Tree Type 2
Dahoon Holly, Wax Myrtle, *Salix caroliniana*
- (4) Small Tree Type 3
Red Bay, Spanish Stopper, Florida Fiddlewood, *Harisia simpsonii*



jungles

MAIN ENTRANCE

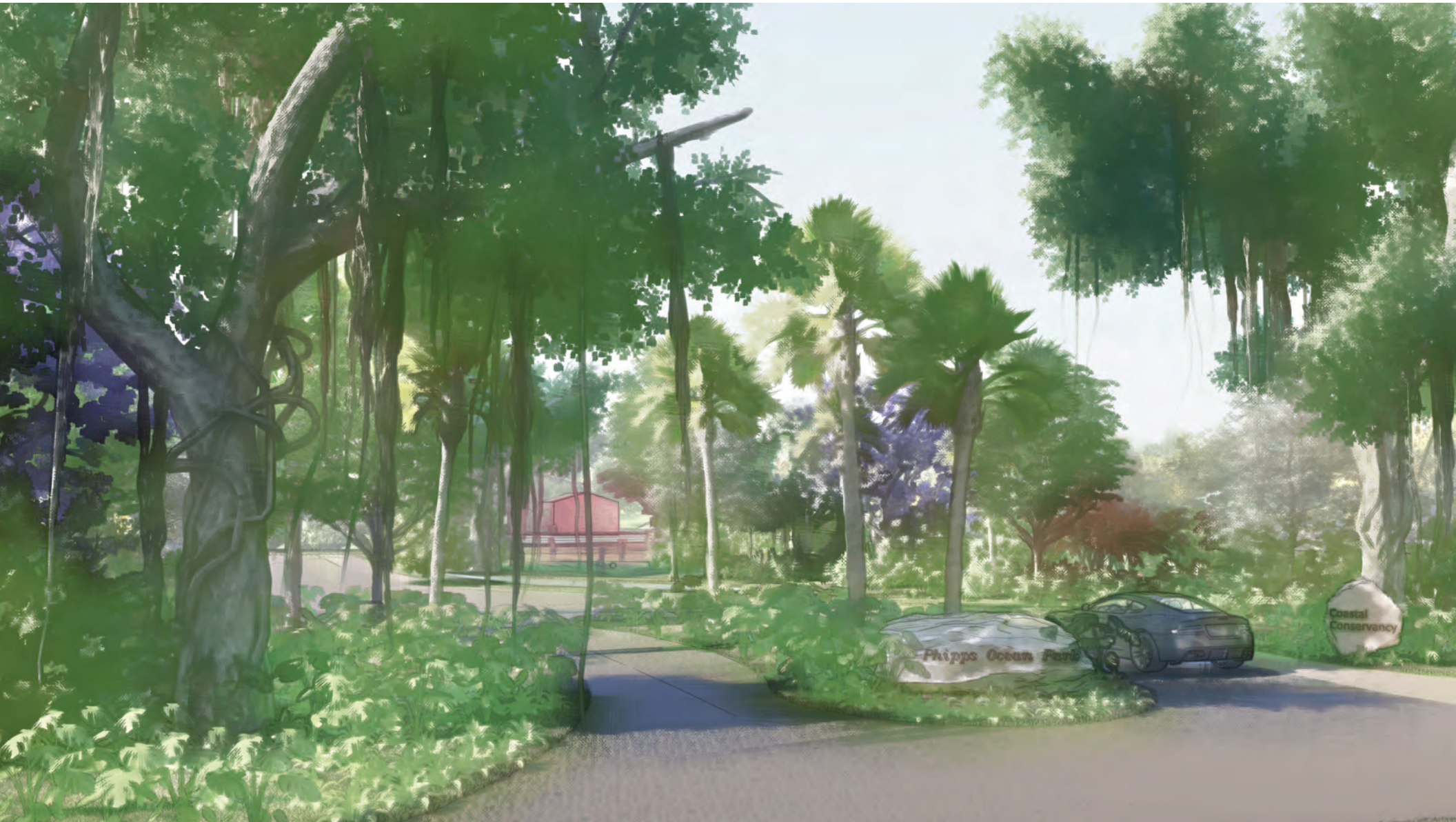


Area: 4,930 sq.ft

Driving along A1A, two monumental Strangler Figs and a native rock sign mark the park's main entrance.

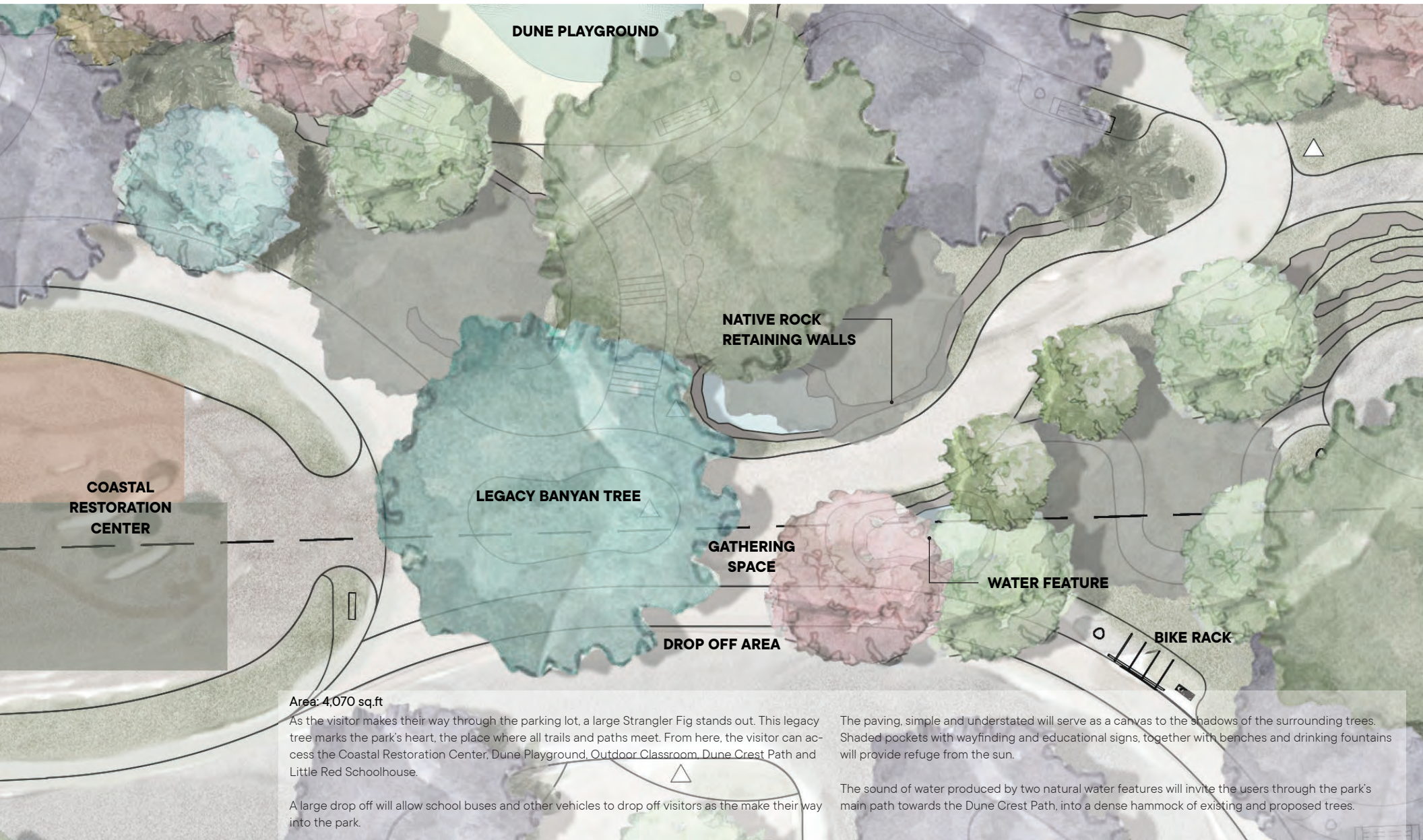
This space, a confluence of pedestrian and vehicular flows, offers a pause in the dense vegetation with open views into the park.

As the visitor enters by foot or vehicle, the road and sidewalk curve towards the north, allowing open views across the Great Lawn, displaying the Little Red Schoolhouse in the back.



jungles

GOLD COAST GATEWAY



Area: 4,070 sq.ft

As the visitor makes their way through the parking lot, a large Strangler Fig stands out. This legacy tree marks the park's heart, the place where all trails and paths meet. From here, the visitor can access the Coastal Restoration Center, Dune Playground, Outdoor Classroom, Dune Crest Path and Little Red Schoolhouse.

A large drop off will allow school buses and other vehicles to drop off visitors as they make their way into the park.

The paving, simple and understated will serve as a canvas to the shadows of the surrounding trees. Shaded pockets with wayfinding and educational signs, together with benches and drinking fountains will provide refuge from the sun.

The sound of water produced by two natural water features will invite the users through the park's main path towards the Dune Crest Path, into a dense hammock of existing and proposed trees.

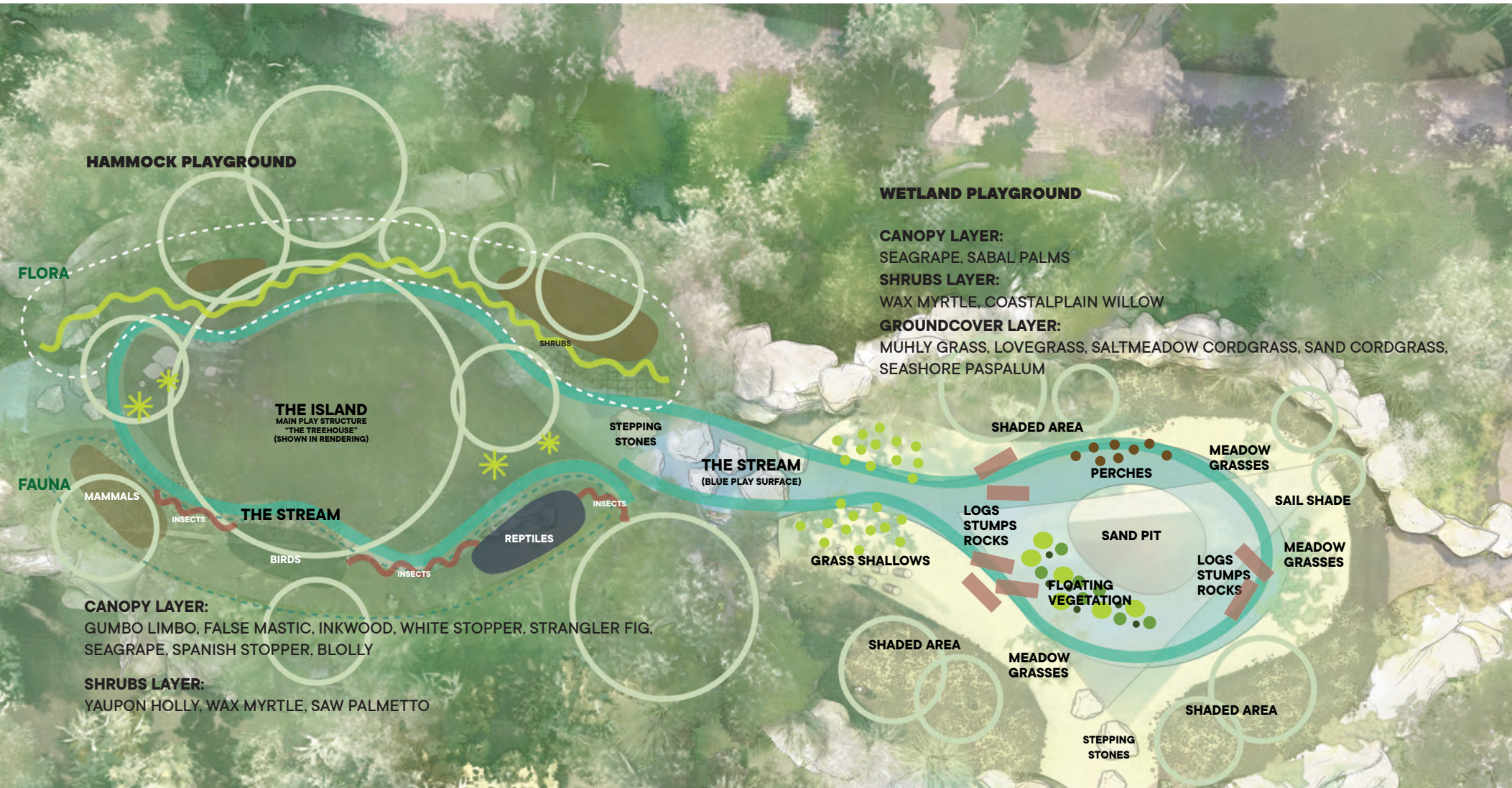


jungles



jungles

DUNE PLAYGROUND



Area: 5,000 sq.ft

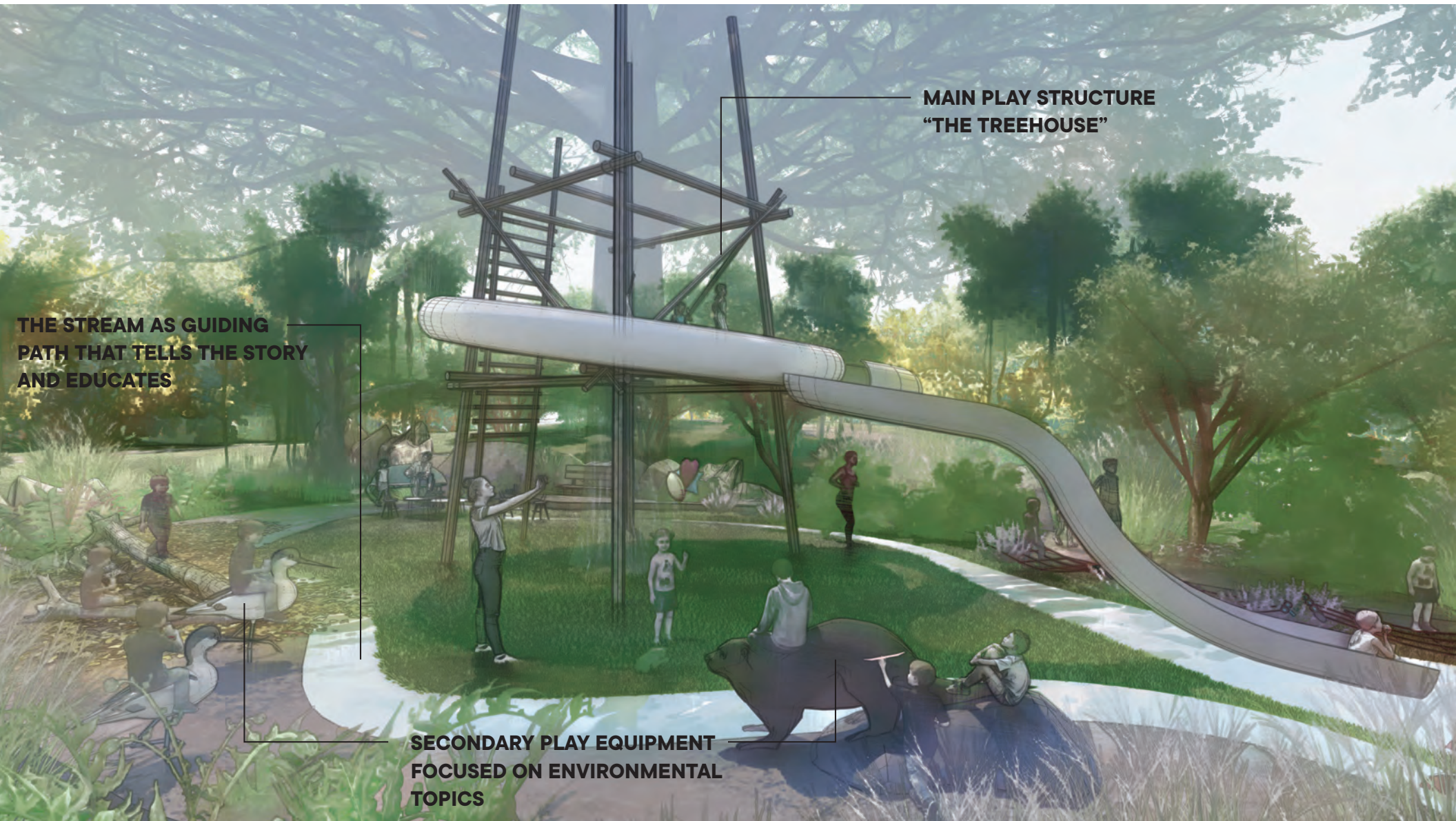
Stepping down from the Dune Crest Path, the Dune Playground offers recreation opportunities for children of all ages. Split into two larger platforms, the playground is divided into an area intended for children in their middle childhood (6-11) and an area for preschoolers. The activities vary according to the area. The older children's playground offers larger play structures embedded in the landscape, where the line between play and learn is blurred. The elevation differences provided by the park's topography is used as an opportunity for play; an interpretive experience that relates to the landscape. Using vegetation and topography as play features that also provide an educational experience.

The younger children's space, is protected from wind, shaded by trees and in proximity to the restrooms and the Little Red Schoolhouse. The program will offer a more sensory experience, where nature's colors, sounds and textures become the focus. The area is divided into two playgrounds, the Hammock Playground and the Wetland Playground. The interface of Hammock and Wetland ecosystems is one of the most diverse habitats in Florida. Water as the source of life, will guide the user along a path of fun and

education where themed play structures alternate with interpretative games. The Hammock playground will tell the story about this habitat's flora and fauna. Guided by "The Stream" a path inspired in water; the user can experience the different layers of vegetation. Groundcovers, shrubs, and canopy all portrayed in its real form, but also as interpretative experiences provided by play equipment.

On the south side, children will be able to learn about the fauna, represented by mammals, birds, reptiles and insects. At the center of the playground, a large tree with a surrounding play structure will be the center of all activity.

As the blue paving makes its way down to the Wetland Playground, children will make their way through large grass looking structures that provide a playful opportunity to learn about Florida's native grasses. The objective of the playground is to show the building blocks of our habitats. Sand, organic matter and water are the main ingredients of Florida's soil, the foundation for any landscape. Exposed to forms, colors and materials, children will be able to learn about water, wind and tides, and their relevance in the context of ecosystems.

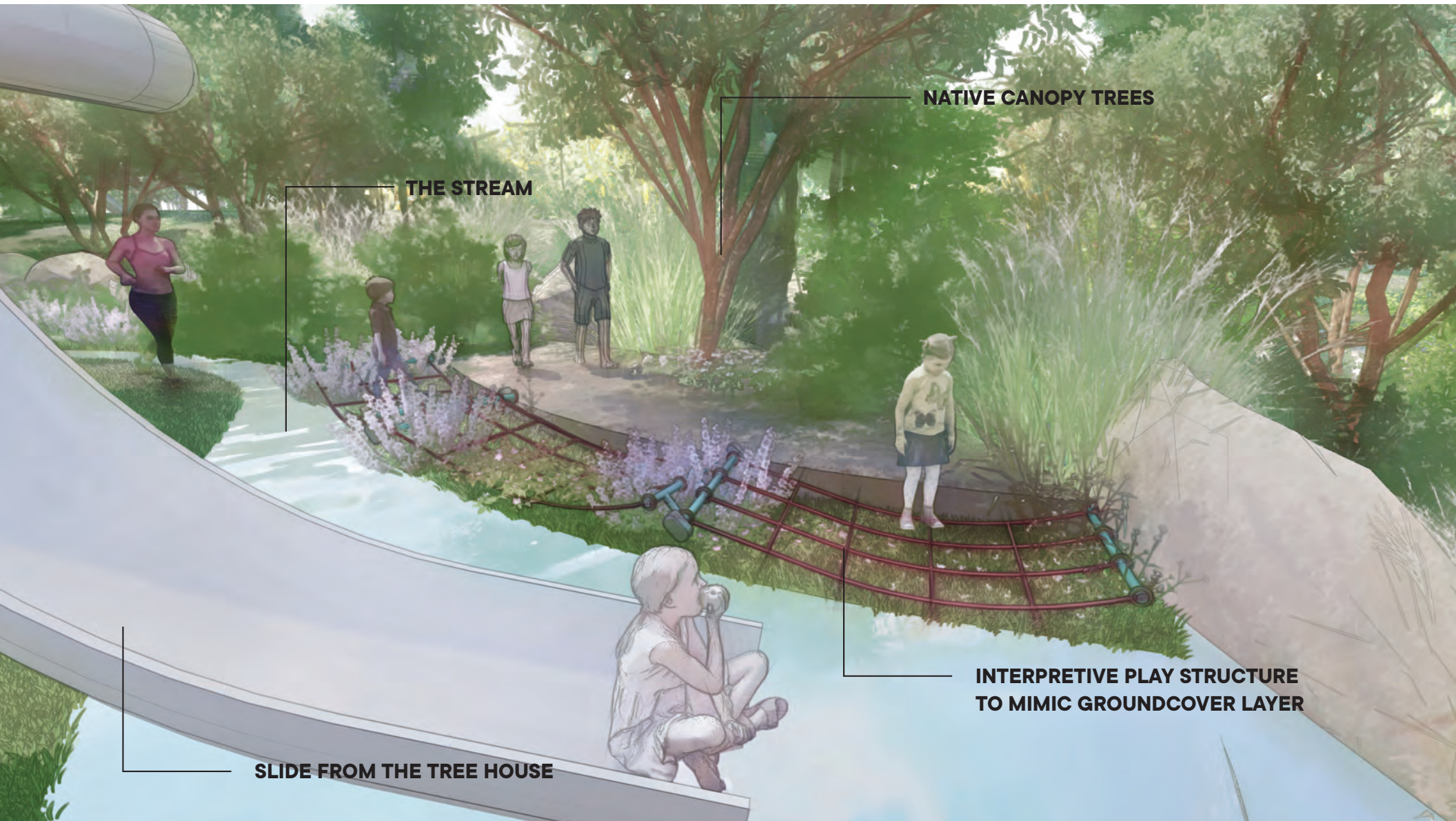


**THE STREAM AS GUIDING
PATH THAT TELLS THE STORY
AND EDUCATES**

**MAIN PLAY STRUCTURE
"THE TREEHOUSE"**

**SECONDARY PLAY EQUIPMENT
FOCUSED ON ENVIRONMENTAL
TOPICS**

jungles



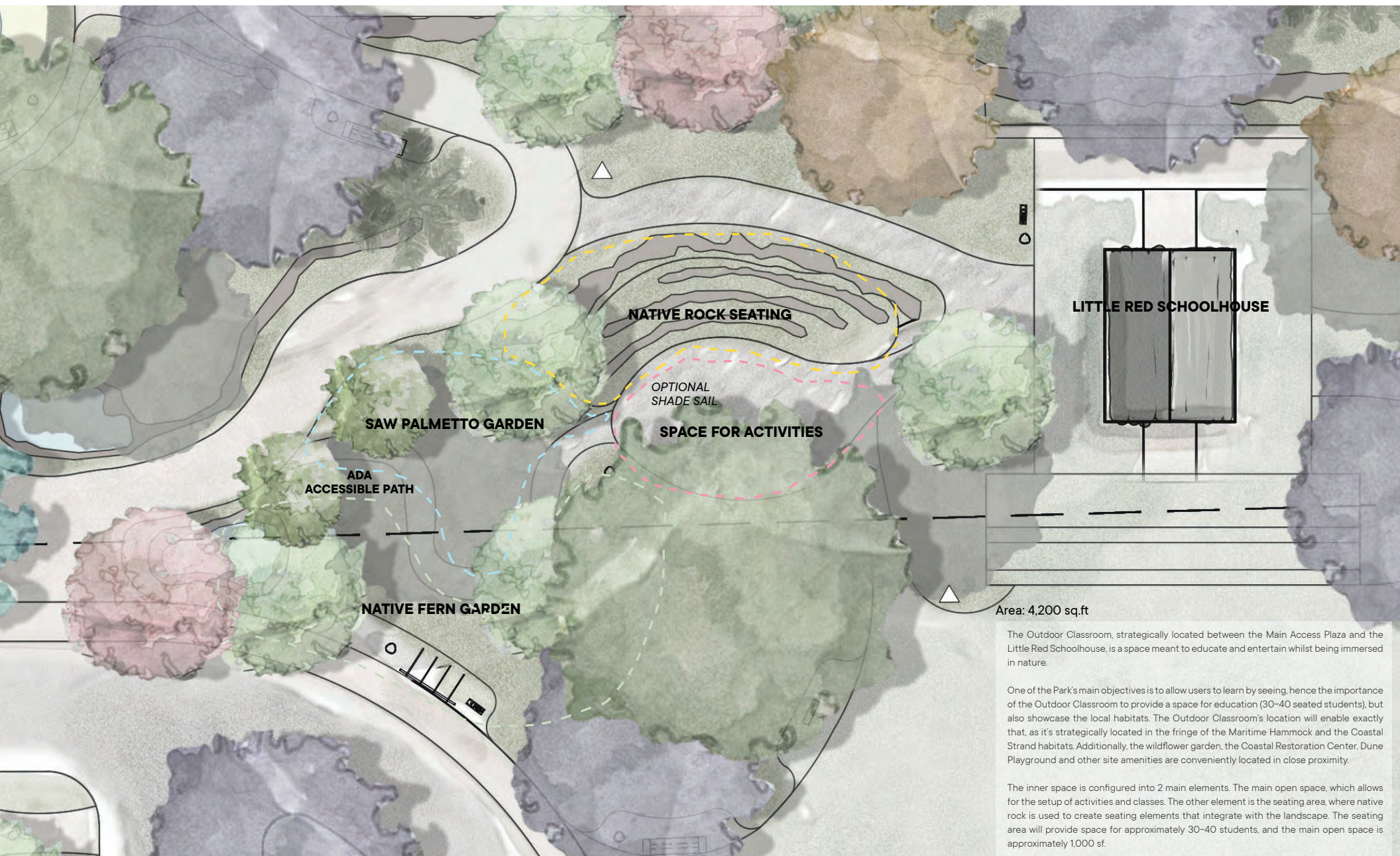
NATIVE CANOPY TREES

THE STREAM

SLIDE FROM THE TREE HOUSE

**INTERPRETIVE PLAY STRUCTURE
TO MIMIC GROUNDCOVER LAYER**

OUTDOOR CLASSROOM



The Outdoor Classroom, strategically located between the Main Access Plaza and the Little Red Schoolhouse, is a space meant to educate and entertain whilst being immersed in nature.

One of the Park's main objectives is to allow users to learn by seeing, hence the importance of the Outdoor Classroom to provide a space for education (30-40 seated students), but also showcase the local habitats. The Outdoor Classroom's location will enable exactly that, as it's strategically located in the fringe of the Maritime Hammock and the Coastal Strand habitats. Additionally, the wildflower garden, the Coastal Restoration Center, Dune Playground and other site amenities are conveniently located in close proximity.

The inner space is configured into 2 main elements. The main open space, which allows for the setup of activities and classes. The other element is the seating area, where native rock is used to create seating elements that integrate with the landscape. The seating area will provide space for approximately 30-40 students, and the main open space is approximately 1,000 sf.



WATER FEATURE

PATH TO DUNE CREST

PATH TO OUTDOOR CLASSROOM

WATER FEATURE

jungles



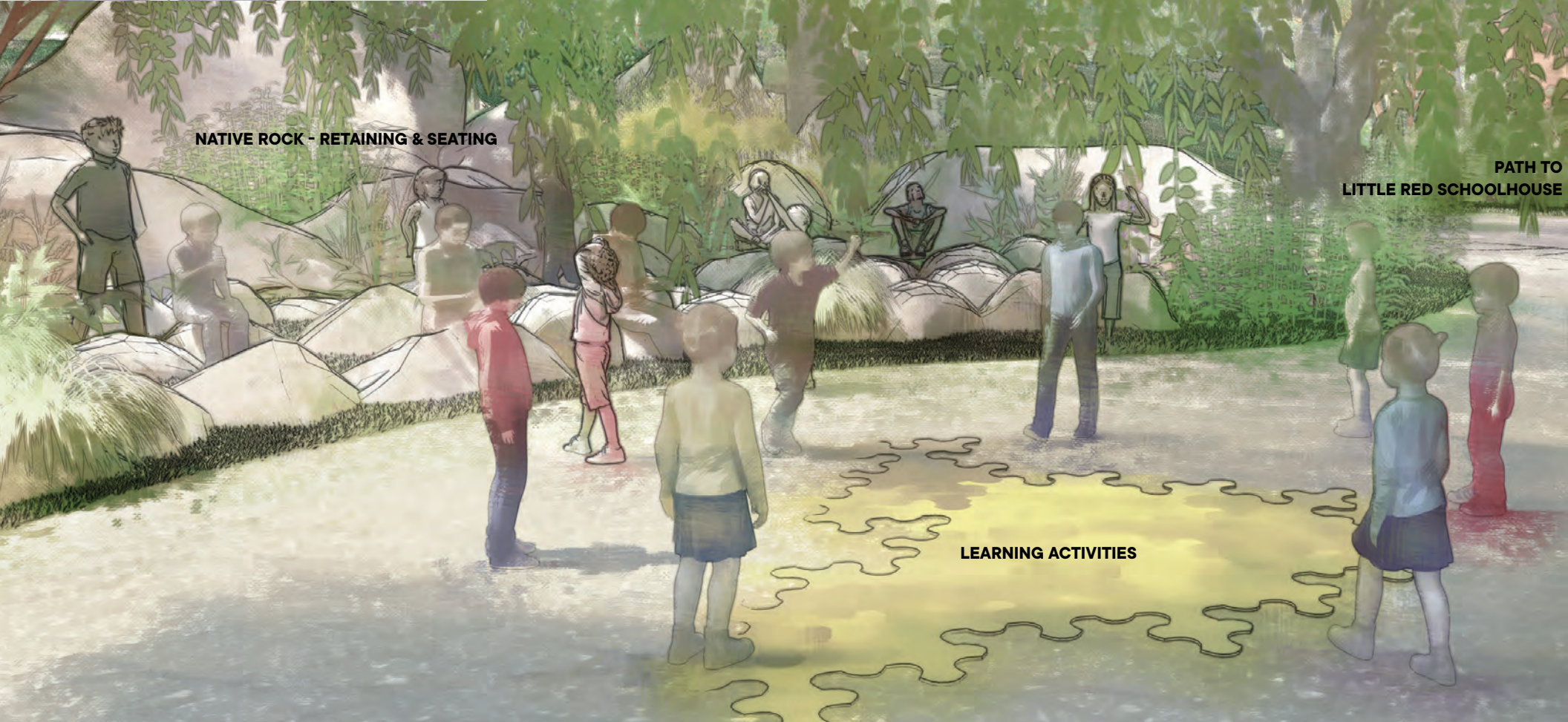
jungles



jungles

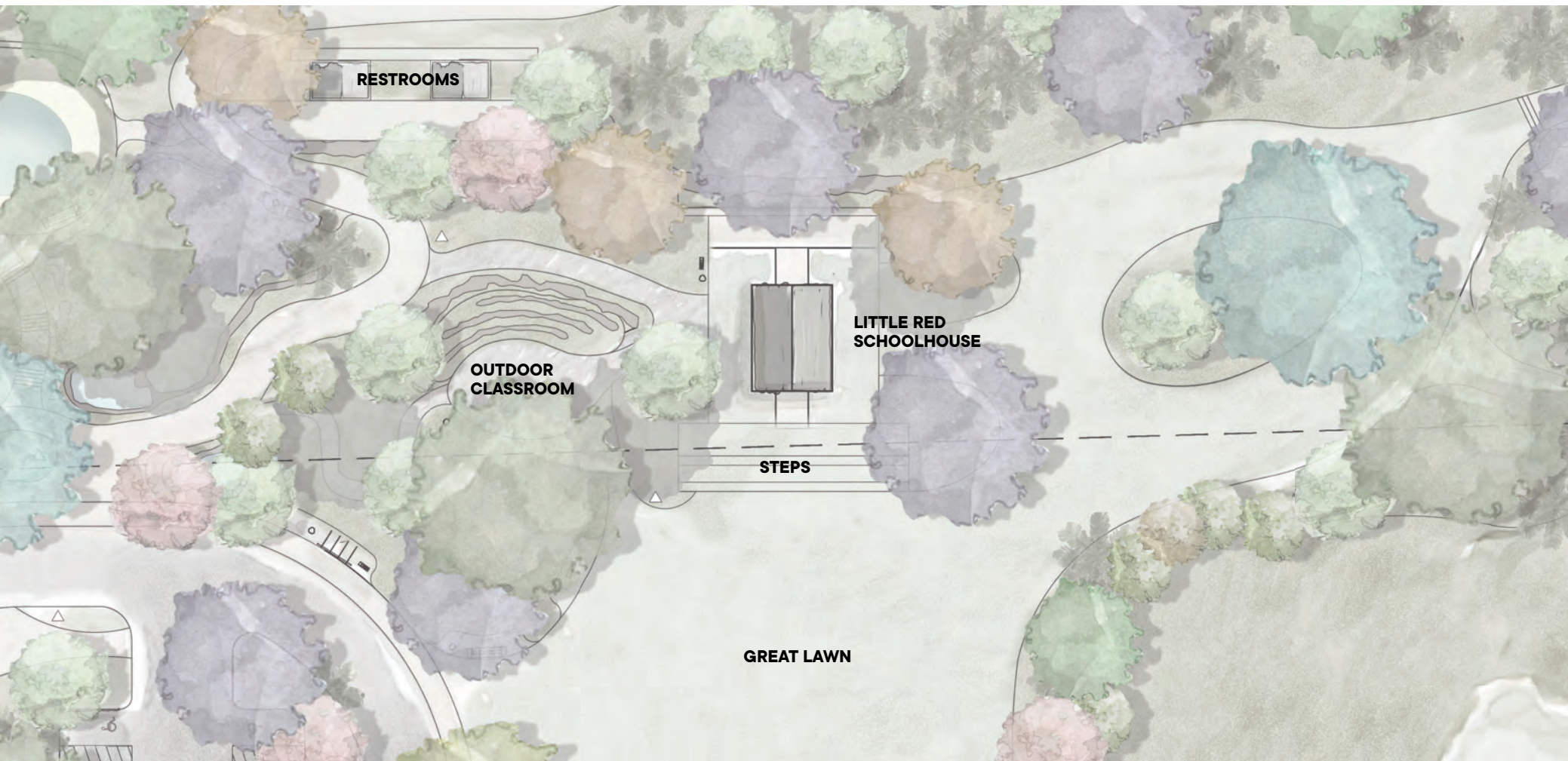


jungles



jungles

LITTLE RED SCHOOLHOUSE



Area: 2,300 sq.ft

Across the Great Lawn and a few feet up the dune, relocated from its current location, this space is meant to serve as the center of activity at Phipps Ocean Park. Being a schoolhouse will be only part of its educational mission, as now it will be the confluence point for all visitors.

Embedded in native vegetation and under the shade of large canopy trees, an outdoor space will host meetings, classes, and activities for small and medium groups. Larger groups can be accommodated on the terraced steps, overlooking the Great Lawn.



jungles

GREAT LAWN



Area: 19,450 sq.ft

jungles



jungles



jungles

WILDFLOWER GARDEN



Area: 13,000 sqft

The Wildflower Garden is a transformative space with the mission of receiving the rainwater from nearby garden spaces. The space will become one of restoration, a steward for adaptation and resiliency.

Facing directly across the Lawn from the Little Red Schoolhouse, water will collect in a natural basin, and naturally infiltrate into the soil, providing necessary moisture for plants to survive without irrigation.

It will be planted with native species that thrive in moist conditions, bringing diversity of plants, insects and animals otherwise not present in the park.

Whether its reflecting Florida skies during rainy season, or the constant movement of native grasses during dry season, the ever-changing nature of the space will provide visual interest at all times.

A walkway will invite the visitor to explore different species along the way. Turns along the way will direct views to relevant vistas and moments. This path will be part of the education circuit that runs around the park. Demonstrating the importance that wildflowers and grasses have, and their function within a larger ecosystem.

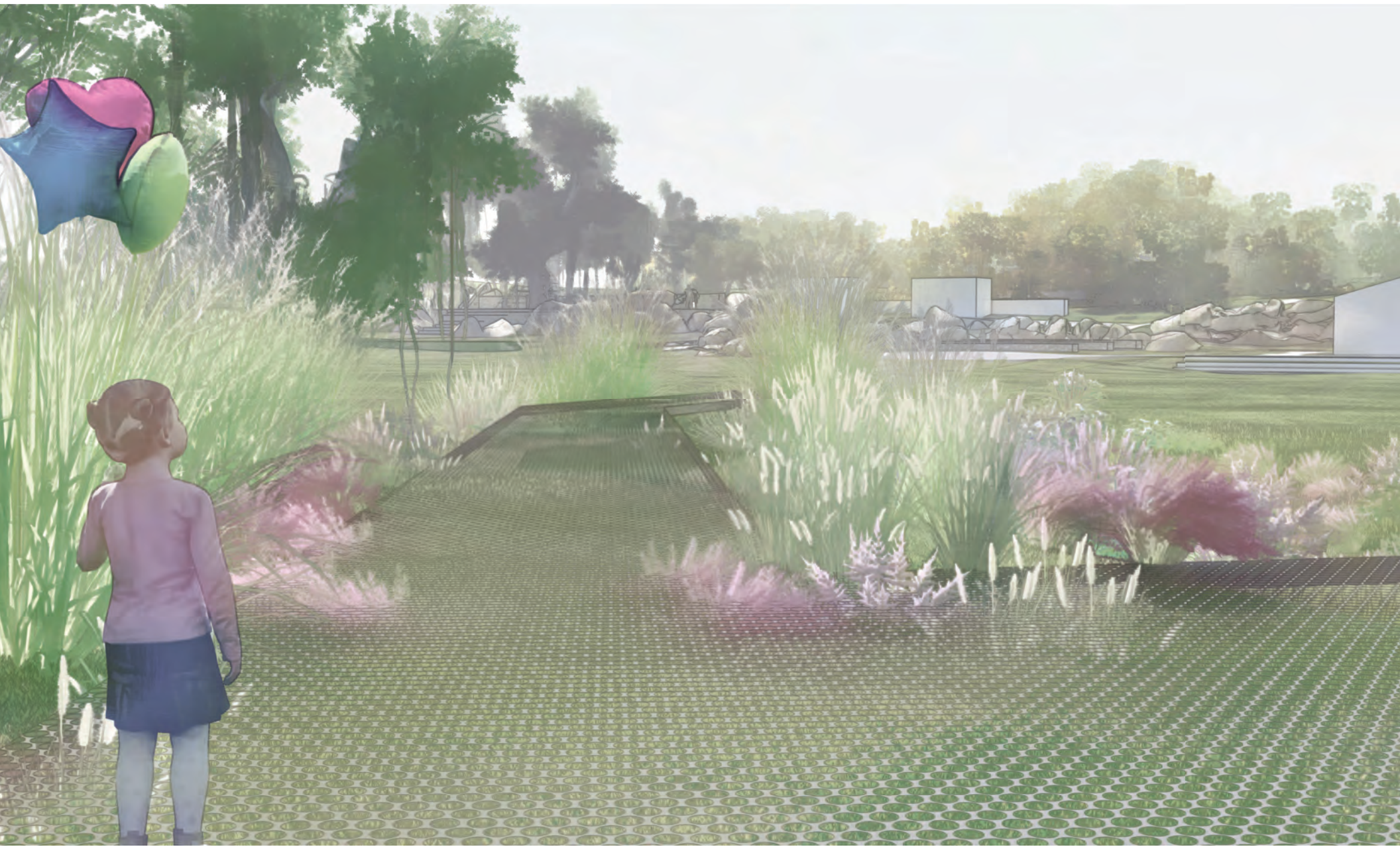
SCULPTURE *



jungles



jungles

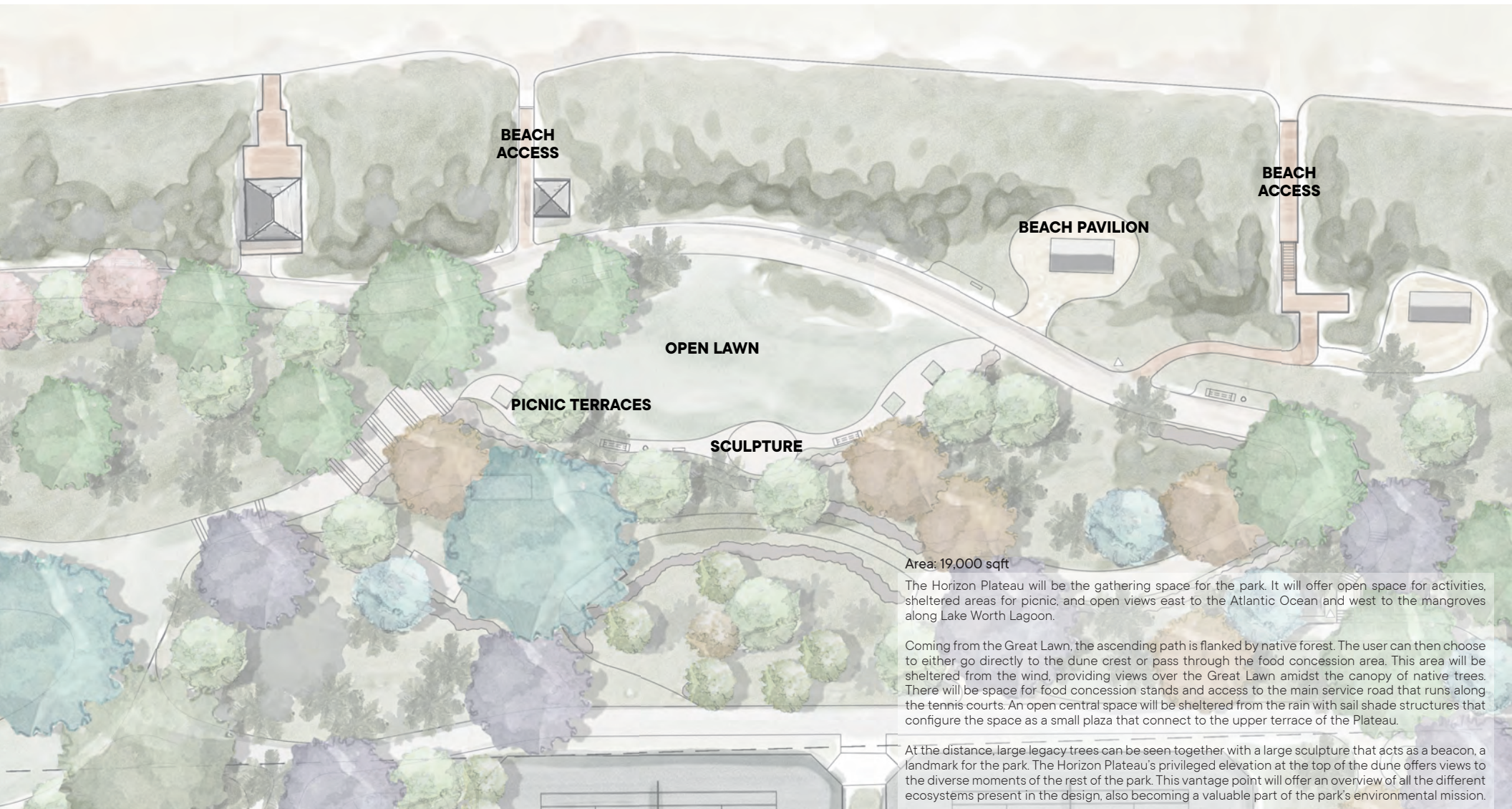


jungles



jungles

HORIZON PLATEAU





jungles



SCULPTURE

OPEN LAWN

jungles



OPEN LAWN

jungles

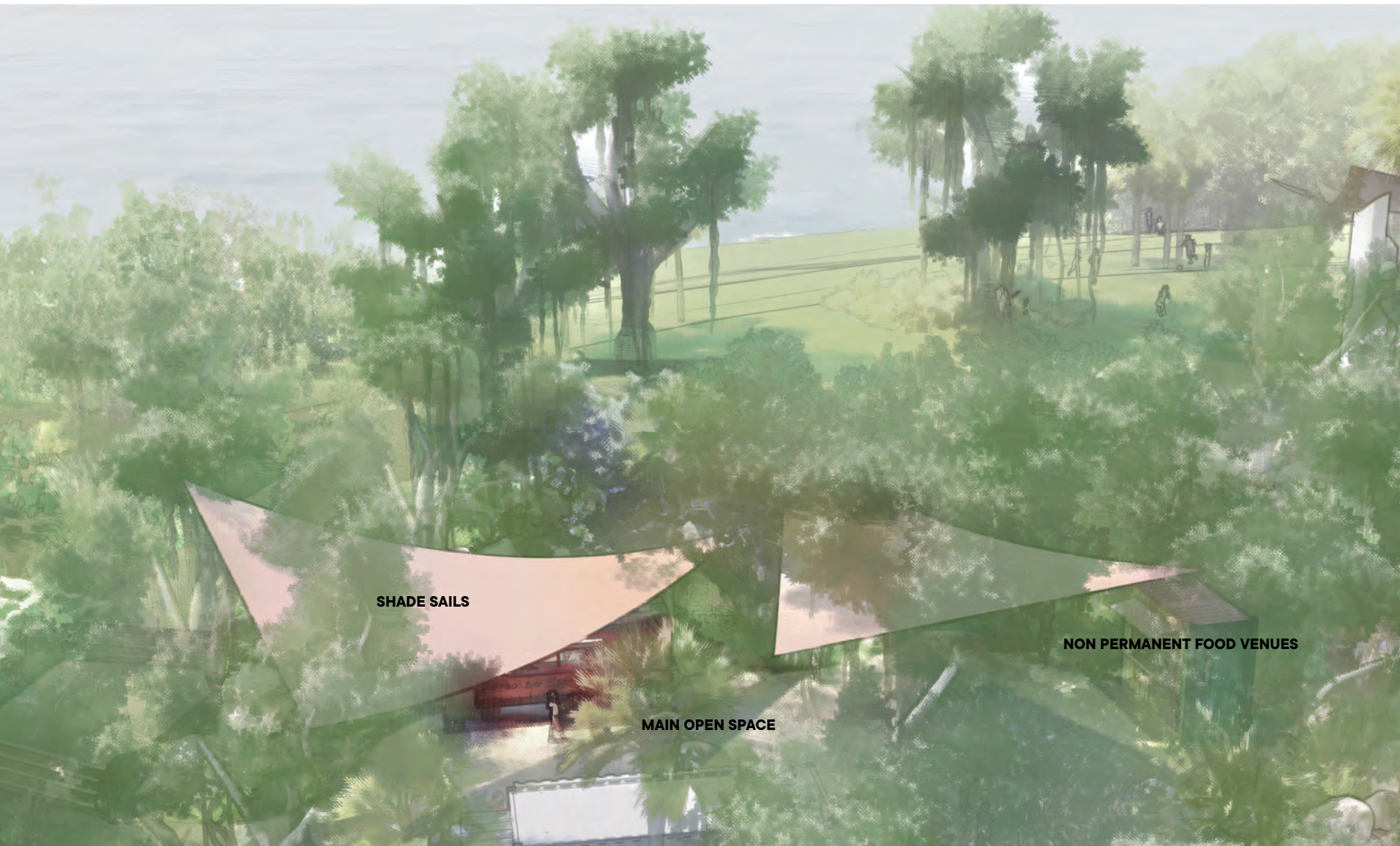
CONCESSIONS AREA



Area: 3,650 sq.ft

Midway from the Great Lawn and the Horizon Plateau, lies the Food Concessions area. In the midst of Maritime Hammock trees, an open shaded space designed to receive semi-permanent food venues. Patrons will be protected from sun and rain by the dense canopy cover and carefully designed sail shade structure.

The space will be ADA accessible and will also provide a vehicular access ramp for service.



SHADE SAILS

MAIN OPEN SPACE

NON PERMANENT FOOD VENUES

jungles



TO HORIZON PLATEAU

TO CONCESSIONS AREA

jungles

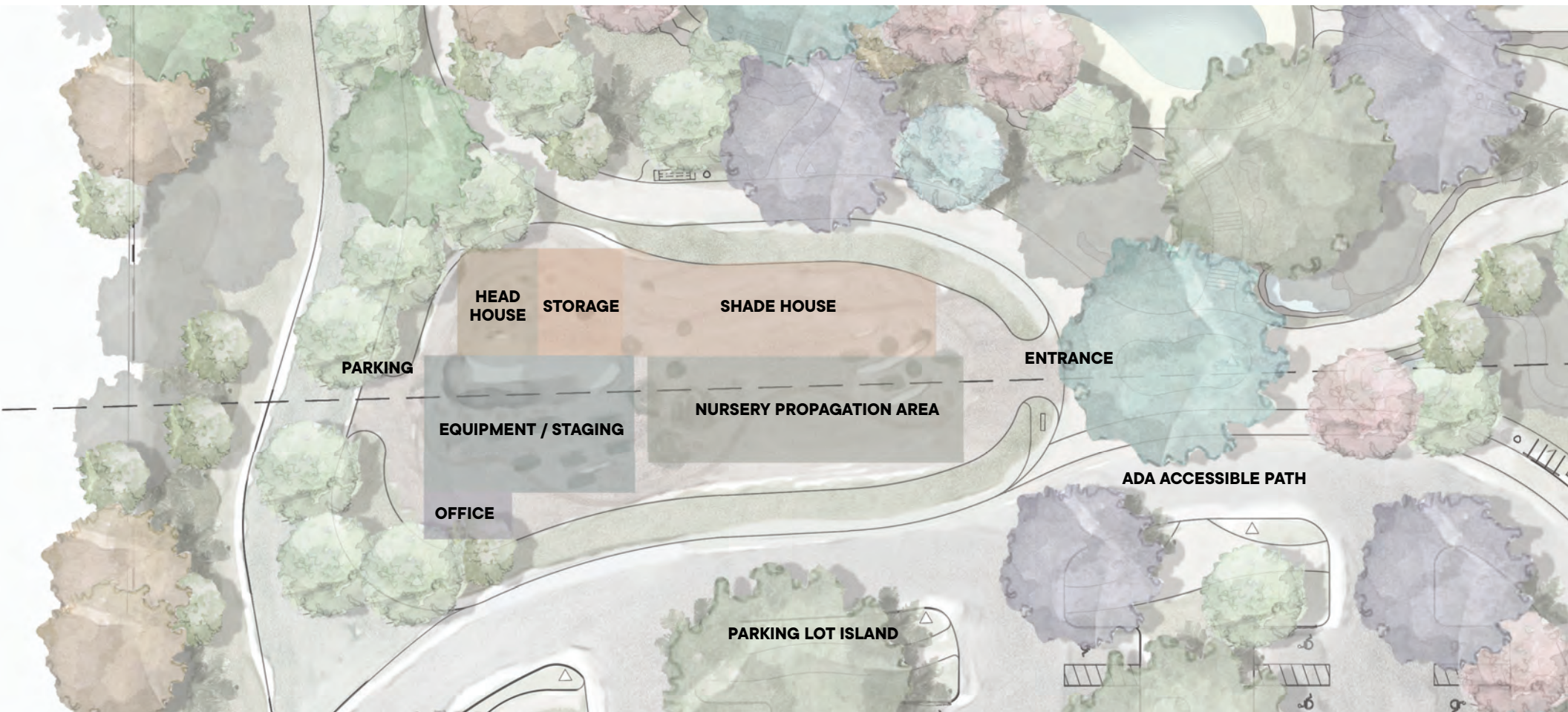


jungles



jungles

COASTAL RESTORATION CENTER



Area: 12,400 sq.ft

North of the Gold Coast Gateway, and west of the main pathway, the Coastal Restoration Center will host an initiative that will educate the visitor about native species, and in the future provide the park with native plants and trees for later phases of the project.

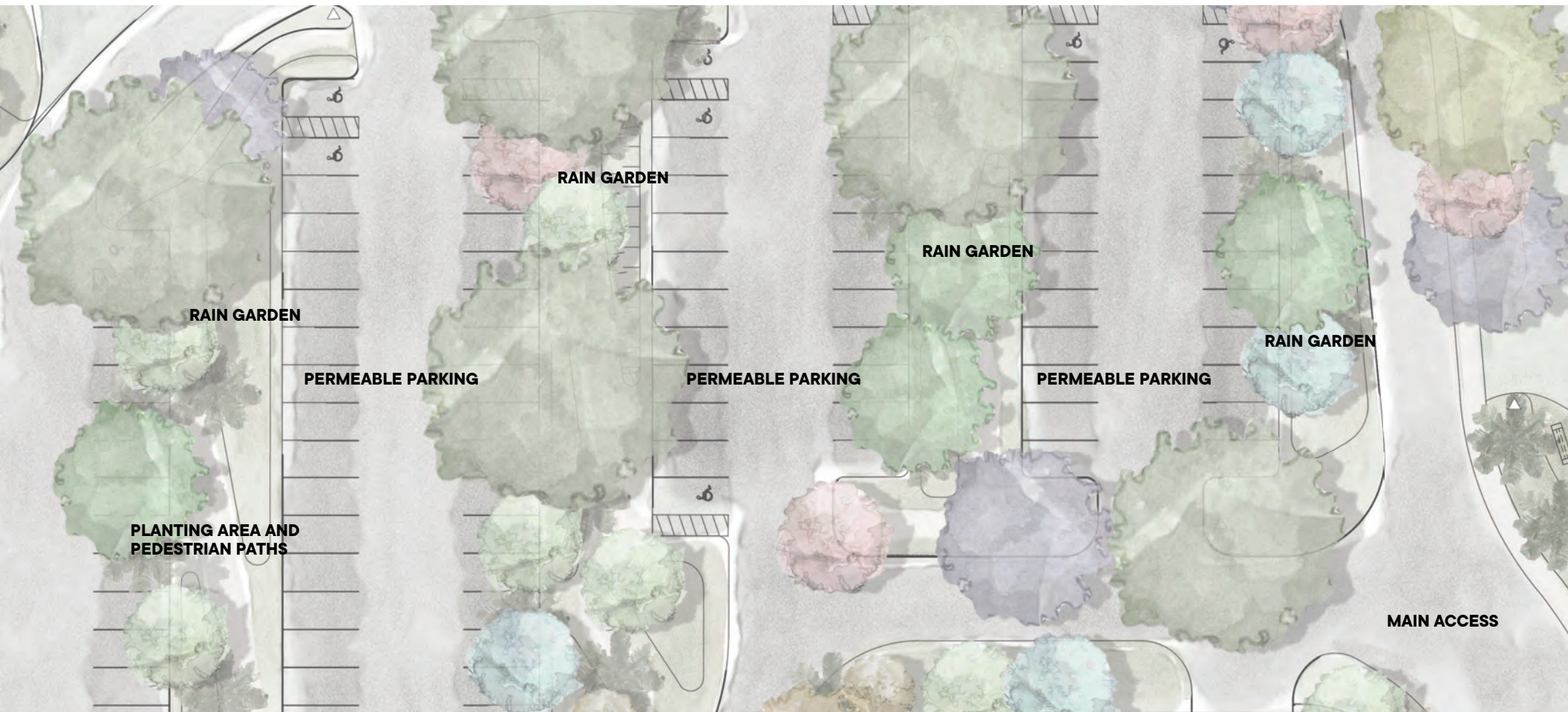
This area will be accessed by the public from its south entrance, where informational panels will begin to tell the story about the CRC's mission and objectives. The space will be divided into main areas for growing, a shade house, storage and an office for the staff. A service entrance will give access to staff from the north, align the Beach Nourishment path.

The CRC's main mission will consist of growing native species for the park, as well as educating the public and staff about Florida's ecology, the use of native species, and how it relates to sustainability and resiliency.



jungles

PARKING LOTS



Area: 85,000 sq.ft

As one of the parks' most extensive areas, parking lots will be integrated into the overall design, and will serve more than one function. Perimeter planting will buffer the park from the immediate neighbors, where a dense native canopy will prevent undesired views to and from the park.

Decomposed granite parking spots will infiltrate water, and parking islands, that run west to east, will collect excess water runoff from the driving isles. The parking islands are designed to bring the landscape into the parking lot and invite users into the park.

A central meandering path, flanked with native Florida landscape will provide a taste of what the park has to offer. Native rain gardens will also provide an educational experience for visitors, who can learn about water collection, retention, and infiltration within the context of native Florida flora and fauna.



jungles

jungles