

TOWN OF PALM BEACH

Information for Business & Administrative Committee Meeting on: April 18, 2022

To: Business and Administrative Committee

From: Jay Boodheshwar, Deputy Town Manager

Re: Proposed Conversation of 2-hour Parking on the 200 Block of S. County Road to a Combination of 30-Minute and ParkMobile Only Paid Parking

Date: April 14, 2022

STAFF RECOMMENDATION

Staff recommends the Business and Administrative Committee (BAC) review the information provided below and consider the recommendations to convert fourteen (14) 2-hour free parking spaces to 30-minute free parking and eight (8) 2-hour free spaces to paid parking via ParkMobile on the 200 block of South County Road.

GENERAL INFORMATION

The Police Department has proposed the conversion of fourteen (14) 2-hour parking spaces on South County Road (between Royal Palm Way and Seaview Avenue) to 30-minute parking. The reason for their request is that many of the 22 total spaces on this block are consistently used by beachgoers, thus minimizing the ability of customers visiting businesses and stores in this area to find on-street parking. Parking enforcement has advised that 42% of the parking citations issued in 2020 in this area were for overtime parking. In 2021 45% of the citations were for overtime parking and through March 2022, 38% of the citations were issued for the same reason. Additional data will be provided at the April 18 BAC meeting, which are currently being gathered by staff.

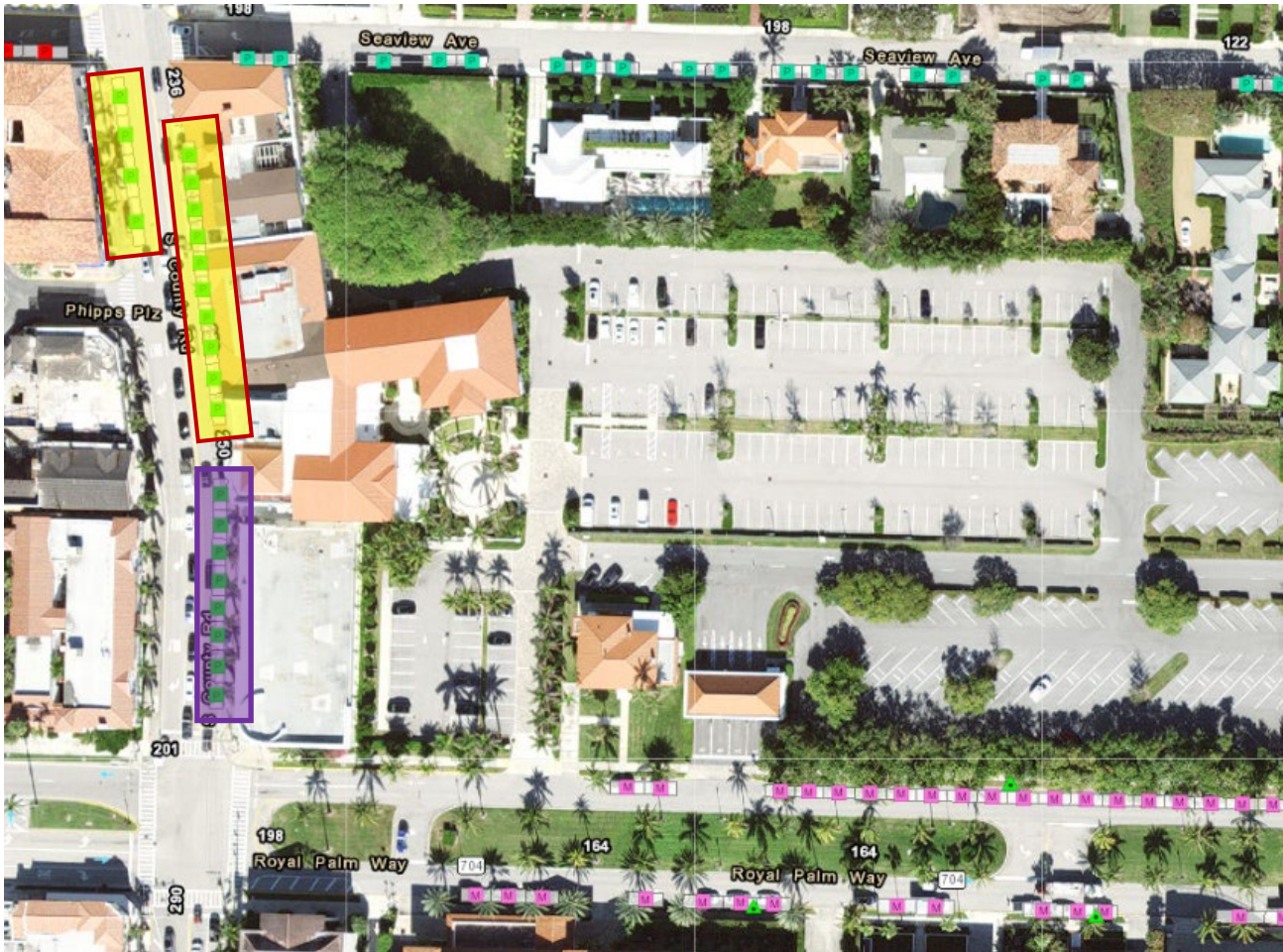
In addition to the Police Department's request, staff recommends that the BAC consider recommending to the Town Council the implementation of ParkMobile only paid parking for the remainder of the eight (8) free 2-hour spaces in this area. See attached map for more information.

Attachment

cc: Mayor and Town Council
Kirk Blouin, Town Manager
Carolyn Stone, Assistant Town Manager
Department Directors
Parking Committee

SOUTH COUNTY ROAD

200 BLOCK



CURRENT REGULATIONS

East Side:

- 2-hour (18 spaces)

South Side:

- 2-hour (4 spaces)

PROPOSED REGULATIONS

East Side:

- Convert ten (10) of the current 2-hour spaces to 30-minute free parking (see YELLOW area)
- Consider implementing ParkMobile only parking for remaining 8 spaces (see PURPLE area)

West Side:

- Convert four (4) of the current 2-hour spaces to 30-minute free parking (see YELLOW area)