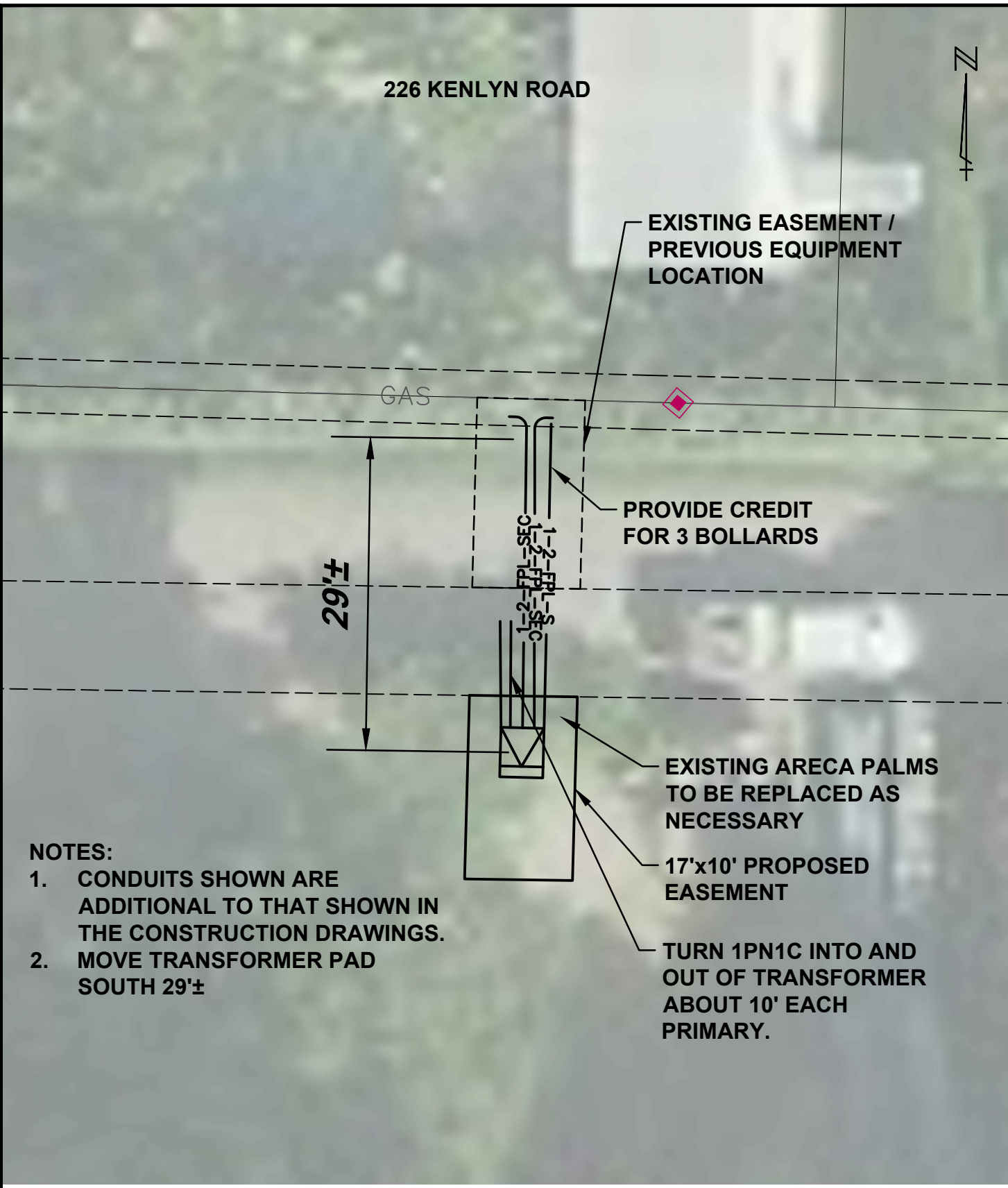


DWG: F:\khorikhorund3\Cad\dwg\EASEMENTS.dwg PLOT DATE: Jan 16, 2020 - 11:06am
 XREFS: UND3CS01_UT01.dwg und3cs01_bmr01.dwg und3cs01_bm02.dwg und3cs01_bm03.dwg und3cs01_md01.dwg und3cs01_md02.dwg und3cs01_md03.dwg und3cs01_md04.dwg und3cs01_md05.dwg und3cs01_md06.dwg und3cs01_md07.dwg und3cs01_md08.dwg und3cs01_md09.dwg und3cs01_md10.dwg und3cs01_md11.dwg und3cs01_md12.dwg und3cs01_md13.dwg und3cs01_md14.dwg und3cs01_md15.dwg und3cs01_md16.dwg und3cs01_md17.dwg und3cs01_md18.dwg und3cs01_md19.dwg und3cs01_md20.dwg und3cs01_md21.dwg und3cs01_md22.dwg und3cs01_md23.dwg und3cs01_md24.dwg und3cs01_md25.dwg und3cs01_md26.dwg und3cs01_md27.dwg und3cs01_md28.dwg und3cs01_md29.dwg und3cs01_md30.dwg und3cs01_md31.dwg und3cs01_md32.dwg und3cs01_md33.dwg und3cs01_md34.dwg und3cs01_md35.dwg und3cs01_md36.dwg und3cs01_md37.dwg und3cs01_md38.dwg und3cs01_md39.dwg und3cs01_md40.dwg und3cs01_md41.dwg und3cs01_md42.dwg und3cs01_md43.dwg und3cs01_md44.dwg und3cs01_md45.dwg und3cs01_md46.dwg und3cs01_md47.dwg und3cs01_md48.dwg und3cs01_md49.dwg und3cs01_md50.dwg und3cs01_md51.dwg und3cs01_md52.dwg und3cs01_md53.dwg und3cs01_md54.dwg und3cs01_md55.dwg und3cs01_md56.dwg und3cs01_md57.dwg und3cs01_md58.dwg und3cs01_md59.dwg und3cs01_md60.dwg und3cs01_md61.dwg und3cs01_md62.dwg und3cs01_md63.dwg und3cs01_md64.dwg und3cs01_md65.dwg und3cs01_md66.dwg und3cs01_md67.dwg und3cs01_md68.dwg und3cs01_md69.dwg und3cs01_md70.dwg und3cs01_md71.dwg und3cs01_md72.dwg und3cs01_md73.dwg und3cs01_md74.dwg und3cs01_md75.dwg und3cs01_md76.dwg und3cs01_md77.dwg und3cs01_md78.dwg und3cs01_md79.dwg und3cs01_md80.dwg und3cs01_md81.dwg und3cs01_md82.dwg und3cs01_md83.dwg und3cs01_md84.dwg und3cs01_md85.dwg und3cs01_md86.dwg und3cs01_md87.dwg und3cs01_md88.dwg und3cs01_md89.dwg und3cs01_md90.dwg und3cs01_md91.dwg und3cs01_md92.dwg und3cs01_md93.dwg und3cs01_md94.dwg und3cs01_md95.dwg und3cs01_md96.dwg und3cs01_md97.dwg und3cs01_md98.dwg und3cs01_md99.dwg und3cs01_md100.dwg



NOTES:

1. CONDUITS SHOWN ARE ADDITIONAL TO THAT SHOWN IN THE CONSTRUCTION DRAWINGS.
2. MOVE TRANSFORMER PAD SOUTH 29'±

SEC. 03, TWP. 43S., RGE. 43E.

SCALE:	AS SHOWN
FIELD:	----
DRAWN:	SMR
APPR:	JPC

FL. E.B. NO. 48

MOCK•ROOS

CONSULTING ENGINEERS

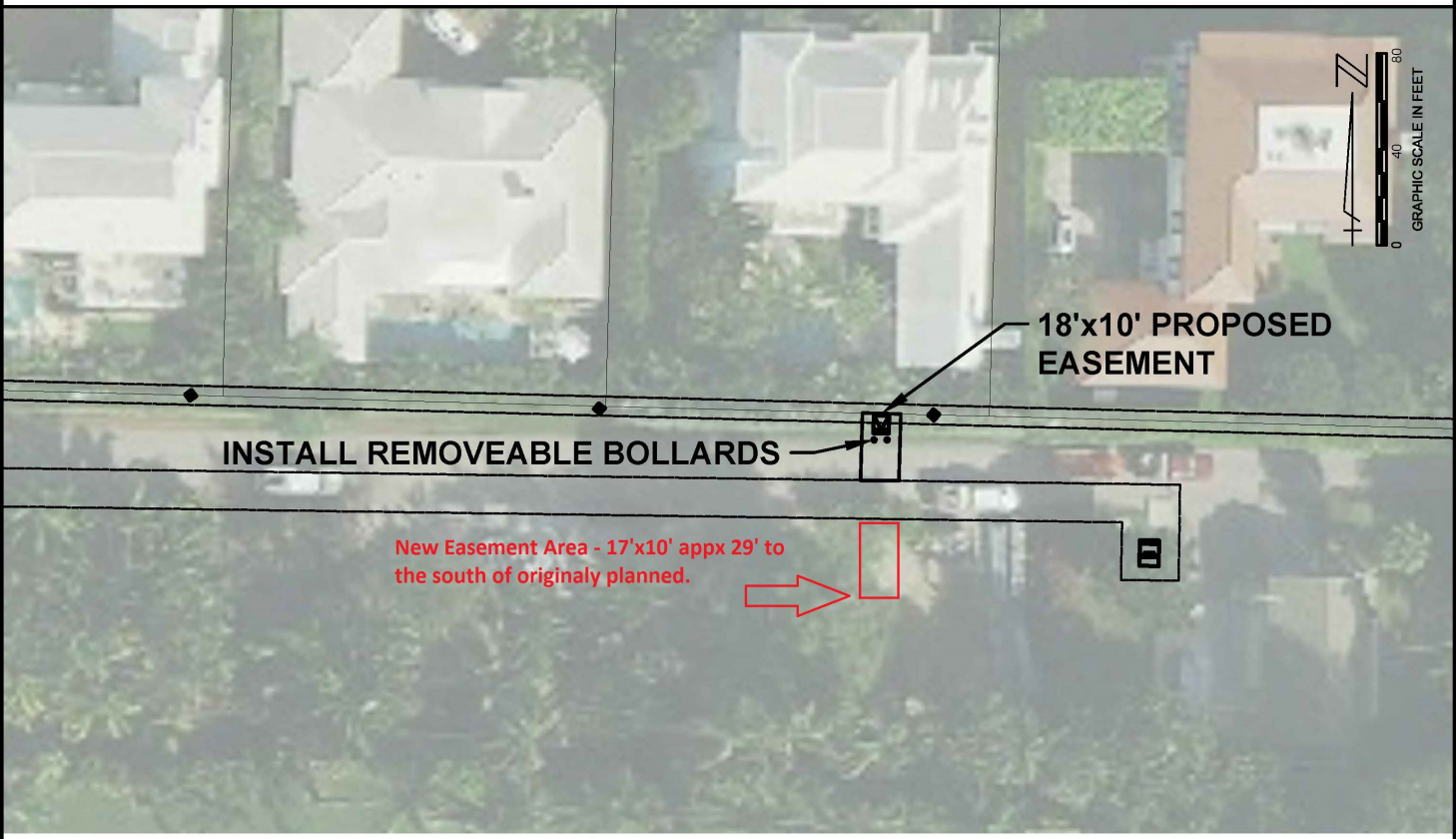
5720 Corporate Way, West Palm Beach, Florida 33407
(561) 683-3113, fax 478-7248

FL. L.B. NO. 48

TOWN OF PALM BEACH
 UNDERGROUNDING
 PHASE 3 NORTH
 EASEMENT EXHIBIT
 PALM BEACH COUNTY, FL

DATE:	2019
P.A. NO.	B5040.30
DR. NO.	4667
ADD:	265 PALMO WAY 3

DWG: F:\khorikhorund3\Cad\dwg\EASEMENTS.dwg PLOT DATE: Mar '15, 2019 - 2:28pm
 XREFS: UNDCS01_UT01.dwg und3cs01_bmd01.dwg UNDCS01_BM02.dwg UNDCS01_BM03.dwg und3cs01_md01.dwg UNDCS01_BM03.dwg UNDCS01_BM01-sup.dwg UNDCS01_BM01-sup.dwg IMAGES: F:\khorikhorund3\Cad\dwg\img\overall_project_print_quality.jpg ...img\overall_project_medium_quality.jpg



SEC. 03, TWP. 43S., RGE. 43E.

SCALE:	AS SHOWN
FIELD:	----
DRAWN:	SMR
APPR:	JPC

FL. E.B. NO. 48

MOCK • ROOS

CONSULTING ENGINEERS
 5720 Corporate Way, West Palm Beach, Florida 33407
 (561) 683-3113, fax 478-7248

FL. L.B. NO. 48

TOWN OF PALM BEACH
 UNDERGROUNDING
 PHASE 3 NORTH
 EASEMENT EXHIBIT
 PALM BEACH COUNTY, FL

DATE:	2018
P.A. NO.	B5040.30
DR. NO.	4667
ADD:	265 PALMO WAY 3