








EQUIPMENT LEGEND		
COUNT	SYMBOL	DESCRIPTION
16		= STEEL 12w48 I-BEAM PILING
8		= EXHIBITOR BOATS (SIZE VARIES)
2		= 4' x 22' DOCK RAMP (W/ PLATFORMS)
2		= 10' x 20' TEMPORARY FLOATING DOCK
30		= 10' x 40' TEMPORARY FLOATING DOCK
1		= FIRE PUMP
6		= FIRE EXTINGUISHER

Palm Beach Boat Show, FLAGLER MUSEUM, Portion of Section 22, Township 43 South, Range 43 East, according to the plat thereof, as recorded in Plat Book 18, Page 24, of the public records of Palm Beach County, Florida.

Said lands situate, lying and being in the City of West Palm Beach, Palm Beach County, Florida and containing 358,847 square feet or 8.2380 acres, more or less.

- ★ 1A EAST MAIN ENTRANCE
- ★ 3A DOCK ENTRANCE GATE (LAND SIDE)
- ★ 3B DOCK ENTRANCE GATE (TENDER SIDE)
- ★ 4A VEHICLE DROP-OFF CREDENTIAL CHECK
- ★ 4B NORTHWEST GATE STAFF ENTRANCE

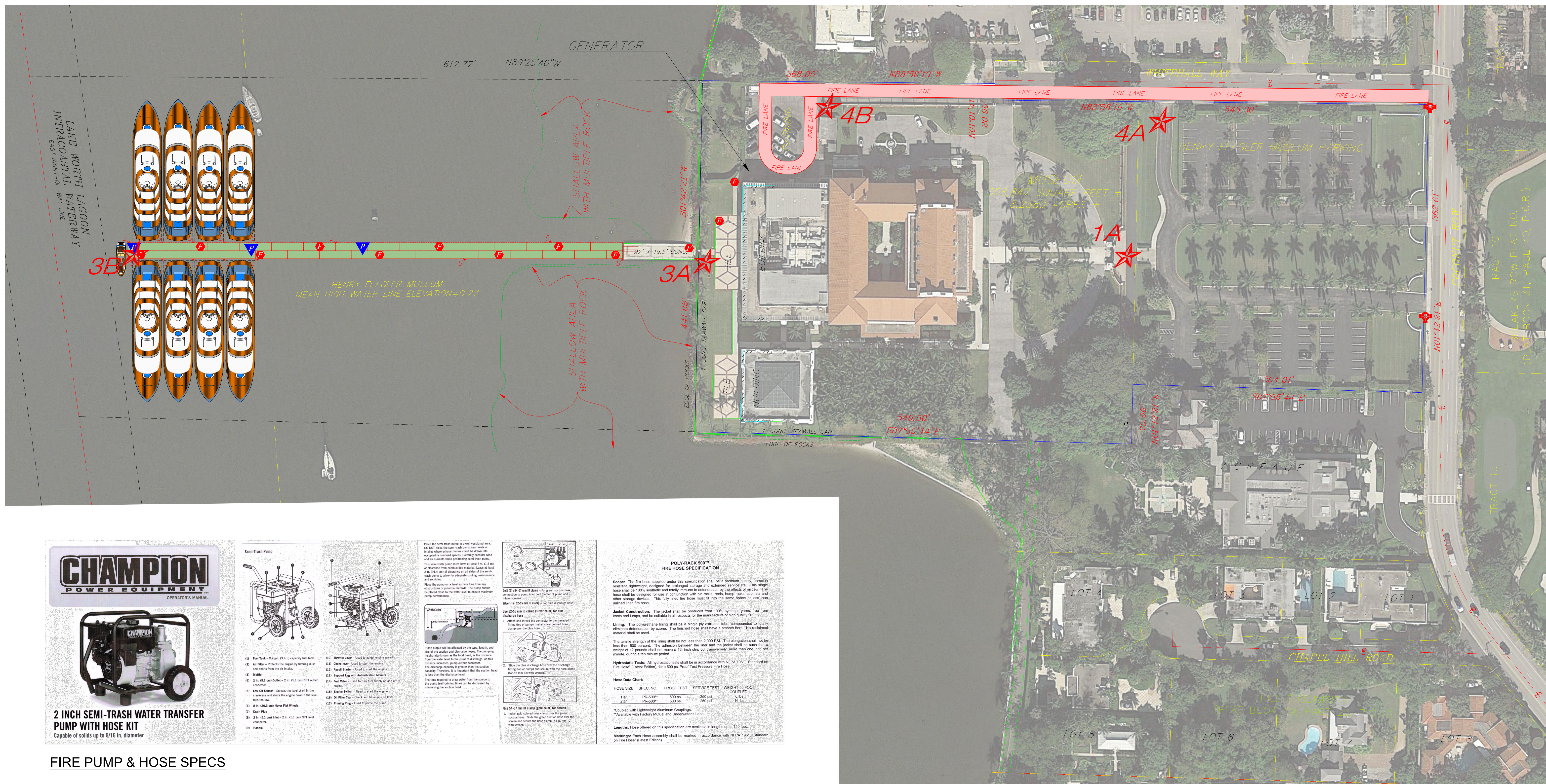


PROVIDE (1) ABC TYPE, "2-A" RATED FIRE EXTINGUISHER FOR EACH 2,500 SQ.FT. MAXIMUM 75 FT. OF TRAVEL DISTANCE.



FIRE PUMPS AND HOSE SPEC.
(SEE BELOW FOR INFORMATION)

15' FIRE LANE ON SITE
(SEE BELOW FOR LOCATION)

[illegible]

Informa
1650 SE 17th Street (Suite 412) Ft. Laud., FL 33116
www.informalexhibitions.com/USBoatshow

Henry Morrison Flagler Museum

1 Whitehall Way, Palm Beach, FL 33480

Life Safety Plan ~ 1

Informa

SCALE
As Shown

DATE
10-18-2019

DRAWN BY
dnp

JOB NUMBER
Flagler Museum

SHI

LS-1 1