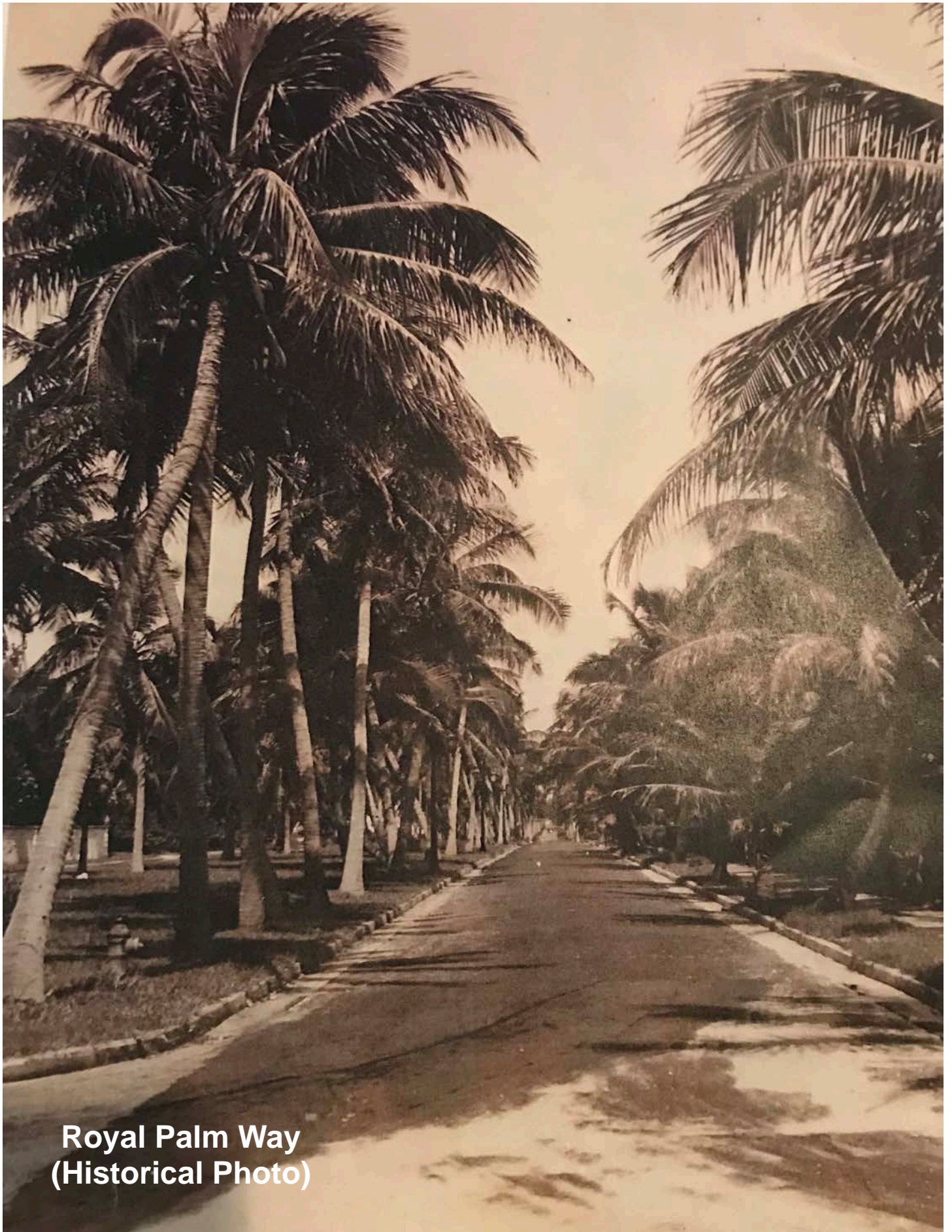


# 75 Palms for Palm Beach:

In honor of the Palm Beach Civic Association's

75<sup>th</sup> Anniversary





**Royal Palm Way  
(Historical Photo)**





**Inspirational Photo  
(Seminole Ave)**





**Inspirational Photo  
(Everglade Ave)**





**Current Conditions on  
Australian Avenue**





**Proposed Conditions on  
Australian Avenue**





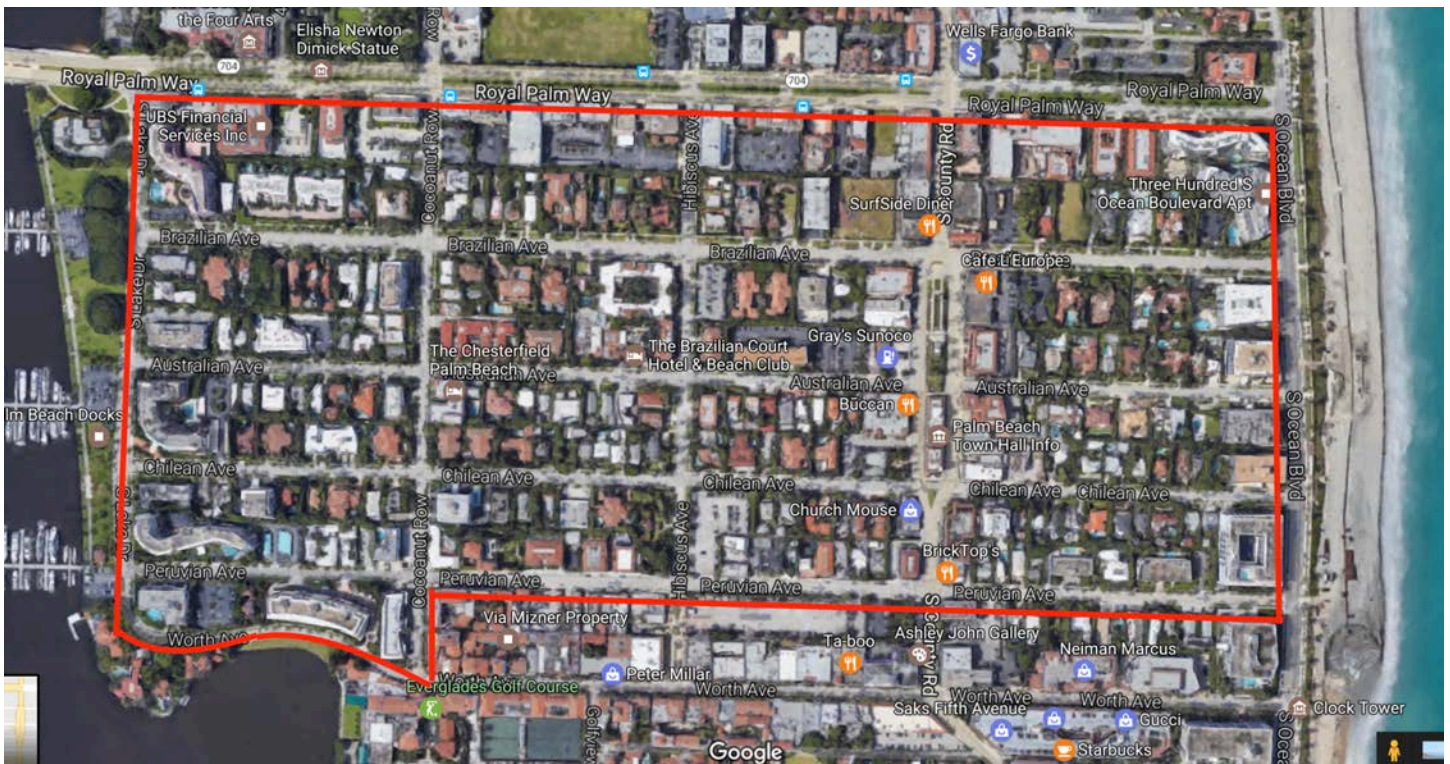
Current Conditions on  
Australian Avenue





**Proposed Conditions on  
Australian Avenue**





**Phase 1 Map**



# 75 Palms for Palm Beach

In honor of the Palm Beach Civic Association's  
75th Anniversary

## Cocoanut Palm Tree Missing Inventory List Palm Beach "In Town" (Worth to Royal Palm Way) March 2018

### Brazilian ROW Landscape Strip (Lake to Ocean)

445	1
440	1
432	1
420	1
416	1
411	1
399	1
340	1
301	2
249	1
234	1 Just west of driveway
227	1
217	1
210	1
331 South County Road	1 Tree pit existing and should be replaced
159	2
140	1
133	1
125	1
330 S Ocean Blvd	2 Near Ocean Blvd Corner
<b>23</b>	

### Australian ROW Landscape Strip (East to West)

369 S Lake Drive	2 1 Near corner of S Lake Drive & 1 in Service Drive Circle
436	1
429	1
412	2
330 Cocoanut Row	2
363 Cocoanut Row	1 Along The Chesterfield
328	1 Has stump to be removed as well
322	2 Left and right of driveway
314	1
301	3 Brazilian Court (1 inside circular driveway, 1 to west of drive, 1 to east of drive)
300	2 Brazilian Court Pavilion
236	1
215	1 Town Parking Lot (Nearer to the Sunoco Station driveway)
340 S County Road	1 Between driveways
350 S County Road	1 Along side Bucaan towards corner of S. County
149	2
146	2
140	2
134	1 Right of driveway
137	3
350 S Ocean Blvd	2 1 west of garage entrance and 1 inside circular driveway
340 S Ocean Blvd	2 Inside circular driveway
<b>36</b>	



**Chilean ROW Landscape Strip (Ocean to Lake)**

400 S Ocean Blvd	1	Along side
360 S Ocean Blvd	3	2 Inside circular drive and one west of garage entrance
129	1	
136	1	
145	1	
149	1	
151	2	
201	1	
222	1	
225	1	
226	1	
230	1	
231	1	
235	1	
242	2	Along Parking Lot
306	1	
320	1	
325	1	
354	4	Island House
401	2	
410	2	
428	2	
434	1	
444	1	
	<u>34</u>	

**Peruvian ROW Landscape Strip (Lake to Ocean)**

151 Worth Ave	1	Behind Neiman Marcus at greenspace lot
148	1	
101 Worth Ave	2	Near Ocean Blvd and west of driveway entry
400 S Ocean Blvd	4	2 near Ocean Blvd and 2 near garage entry
	<u>8</u>	

**South Lake Dr (North to South)**

450 Royal Palm Way	1	
325	1	
369	1	
389	1	
	<u>4</u>	

**Cocoanut Row (North to South)**

396 Royal Palm Way	1	Near parking lot entrance
400 Royal Palm Way	1	Christmas Palm Species Required to match others due to overhead wires
311	1	
315	1	
331	2	
401 Australian	2	Christmas Palm Species Required to match others due to overhead wires
	<u>8</u>	

**Hibiscus (North to South)**

294	1	
250 Royal Palm Way	1	
306	1	
301 Brazilian	1	
321 Hibiscus	2	Brazilian Court Parking Lot (address was a guess)
301 Australian	2	Alongside hotel
300 Australian	2	Brazilian Court Pavilion
247 Chilean Ave	1	Christmas Palm Species Required to match others due to overhead wires
	<u>11</u>	

**Worth Ave (Ocean to Lake)**

455	Stump Removal required	
455	4	Along the bend and closer to Chilean
	<u>4</u>	

<b>Grand Total</b>	<b>128</b>
--------------------	------------