

Stephen Boruff, AIA  
Architects + Planners, Inc.  
AAC 002226  
Architecture  
Planning  
Interior Architecture

901  
Northpoint Parkway  
Suite 101  
West Palm Beach  
Florida 33407

Stephen Boruff AR007995  
Architect of Record

New Construction for:

Town of  
Palm  
Beach

Morton  
and  
Barbara  
Mandel  
Recreation  
Center

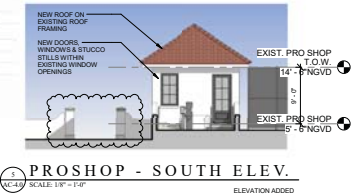
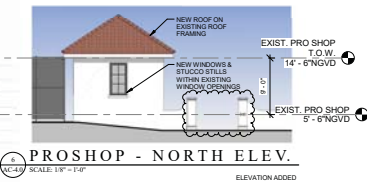
340 Seaview Avenue, Palm  
Beach FL 33480

ARCOM REVISION  
Architect's Project # 16.024  
ARCOM Case # A-028-2018  
Zoning Case # Z-17-00032  
11 July 2018  
REVISIONS

AC-4.0

of X

- EXTERIOR FINISHES:**
1. STUCCO WALLS, WINDOW SILLS & PIERS, HAND OF THE CRAFTSMAN STEEL TROMPEE FINISH  
COLOR: FINE WHITE (OC-1) BY BENJAMIN MOORE
  2. STUCCO TRIM, HAND OF THE CRAFTSMAN STEEL TROMPEE FINISH  
COLOR: PALE ALMOND (OC-3) BY BENJAMIN MOORE
  3. SPANISH MISSION TILE ROOF, GABLE ACCENT & SCUPPERS  
MATERIAL: TEST CLAY
  4. ALUMINUM WINDOWS & EXTERIOR DOORS  
COLOR: BRONZE KYNAR FINISH EXTERIOR
  5. ALUMINUM CLAD WOOD ARCHED DOORS  
COLOR: BRONZE KYNAR FINISH EXTERIOR
  6. EXTERIOR GATES & FRAMES  
COLOR: GLASS SLIPPER (1932) BY BENJAMIN MOORE AT DECORATIVE PLAYGROUND GATES
  7. WOOD RAFTER TAIL S, PAINTED  
COLOR: GLASS SLIPPER (1932) BY BENJAMIN MOORE
  8. CAST STONE TRIM  
COLOR: TRD
  9. DRIP EDGE, GUTTERS & DOWNSPOUTS  
MATERIAL: COPPER
  10. EXTERIOR LANDSCAPE DRAWINGS  
REFER TO LANDSCAPE DRAWINGS.



2 MAIN BLDG - NORTH ELEVATION (SEAVIEW AVENUE)

VC-49 SCALE: 1/8" = 1'-0"

ENTIRE ELEVATION REVISION



1 MAIN BLDG - NORTH ELEVATION (SEAVIEW AVENUE)

VC-49 SCALE: 1/8" = 1'-0"



1 MAIN BLDG & GYMNASIUM - SOUTH ELEVATION (ROYAL PALM WAY)

VC-49 SCALE: 1/8" = 1'-0"

ENTIRE ELEVATION REVISION



1 MAIN BLDG & GYMNASIUM - SOUTH ELEVATION (ROYAL PALM WAY)

VC-49 SCALE: 1/8" = 1'-0"

ENTIRE ELEVATION REVISION

Stephen Boruff, AIA  
Architects + Planners, Inc.  
AAC 002226  
Architecture  
Planning  
Interior Architecture

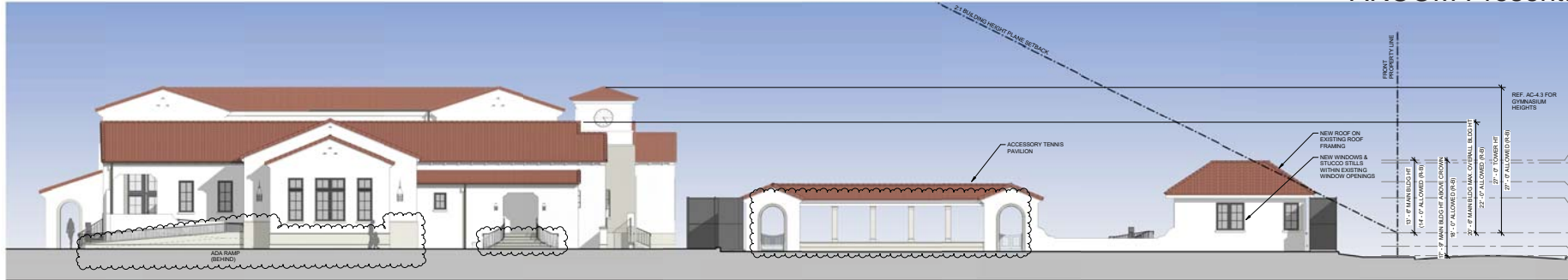
901  
Northpoint Parkway  
Suite 101  
West Palm Beach  
Florida 33407

Stephen Boruff AR007995  
Architect of Record

New Construction for:

Town of  
Palm  
Beach

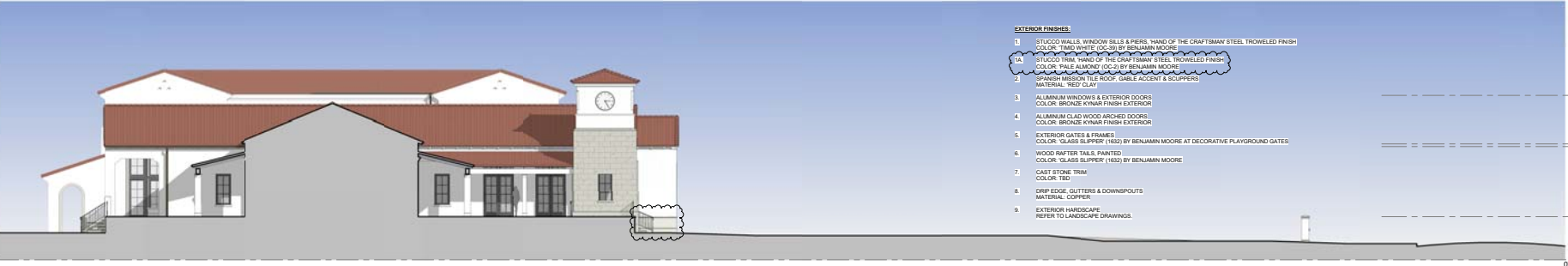
Morton  
and  
Barbara  
Mandel  
Recreation  
Center



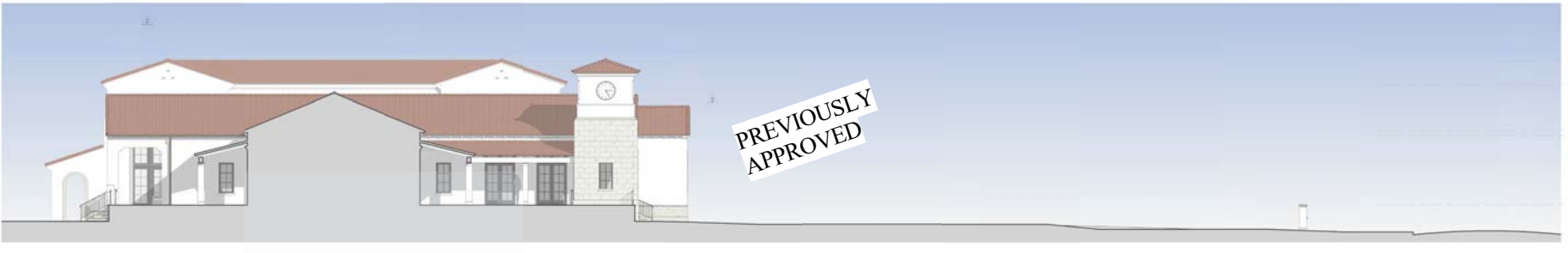
1 MAIN BLDG & TENNIS PAVILION - EAST ELEVATION



1 MAIN BLDG & TENNIS PAVILION - EAST ELEVATION



1 MAIN BUILDING - EAST ELEVATION AT ENTRY



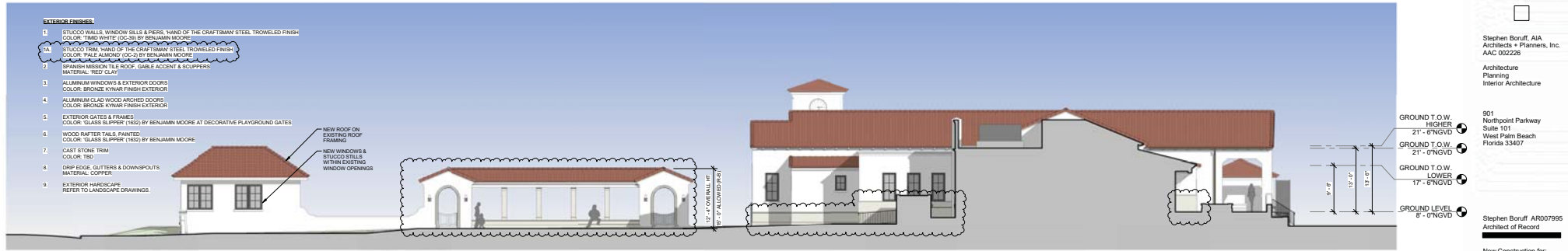
1 MAIN BUILDING - EAST ELEVATION AT ENTRY

340 Seaview Avenue, Palm  
Beach FL 33480

ARCOM REVISION  
Architect's Project # 16.024  
ARCOM Case # A-028-2018  
Zoning Case # Z-17-00032  
11 July 2018  
REVISIONS

AC-4.1

of X



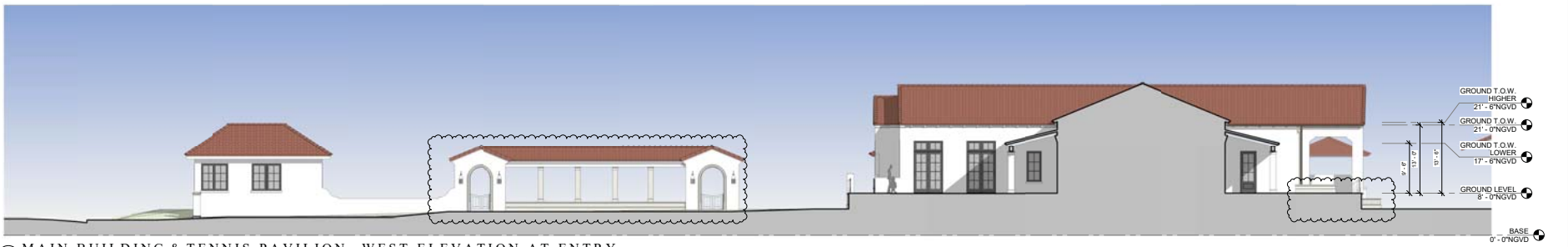
MAIN BUILDING - WEST ELEVATION

SCALE: 1/8" = 1'-0" ENTRE ELEVATION REVISED



MAIN BUILDING - WEST ELEVATION

SCALE: 1/8" = 1'-0"



MAIN BUILDING & TENNIS PAVILION - WEST ELEVATION AT ENTRY

SCALE: 1/8" = 1'-0" ENTRE ELEVATION REVISED



MAIN BUILDING & TENNIS PAVILION - WEST ELEVATION AT ENTRY

SCALE: 1/8" = 1'-0"

Stephen Boruff, AIA  
Architects + Planners, Inc.  
AAG 002226  
Architecture  
Planning  
Interior Architecture

901  
Northpoint Parkway  
Suite 101  
West Palm Beach  
Florida 33407

Stephen Boruff AR007995  
Architect of Record

New Construction for:

Town of  
Palm  
Beach

Morton  
and  
Barbara  
Mandel  
Recreation  
Center

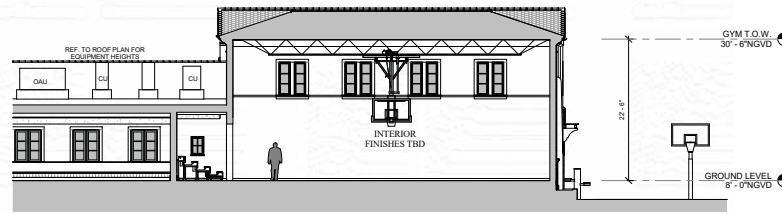
340 Seaview Avenue, Palm  
Beach FL 33480

ARCOM REVISION  
Architect's Project # 16.024  
ARCOM Case # A-028-2018  
Zoning Case # Z-17-00032  
11 July 2018  
REVISIONS

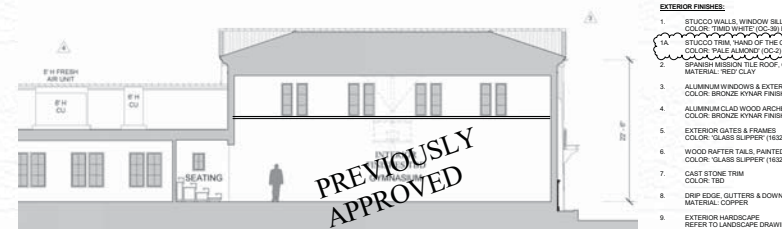
AC-4.2

of X

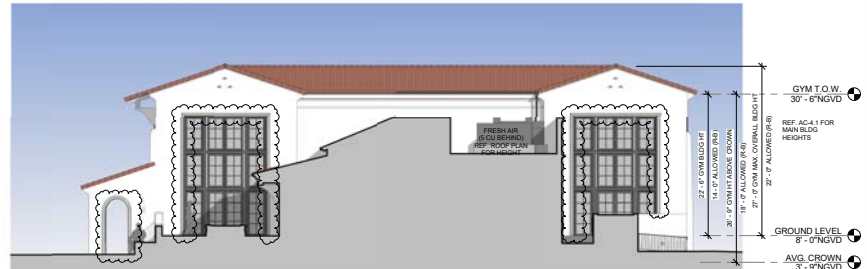




GYMNASIUM - PRELIMINARY BUILDING SECTION



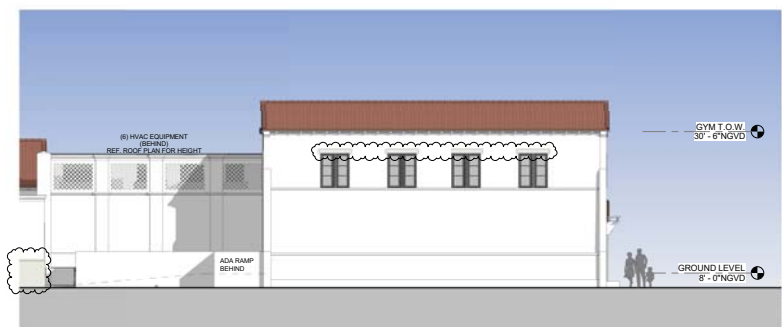
GYMNASIUM - PRELIMINARY BUILDING SECTION



GYMNASIUM - EAST ELEVATION



GYMNASIUM - EAST ELEVATION



GYMNASIUM - NORTH ELEVATION



GYMNASIUM - NORTH ELEVATION



GYMNASIUM - WEST ELEVATION



GYMNASIUM - WEST ELEVATION

Stephen Boruff, AIA  
Architects + Planners, Inc.  
AAC 002226  
Architecture  
Planning  
Interior Architecture

901  
Northpoint Parkway  
Suite 101  
West Palm Beach  
Florida 33407

Stephen Boruff AR007995  
Architect of Record

New Construction for:

Town of Palm  
Beach

Morton  
and  
Barbara  
Mandel  
Recreation  
Center

340 Seaview Avenue, Palm  
Beach FL 33480

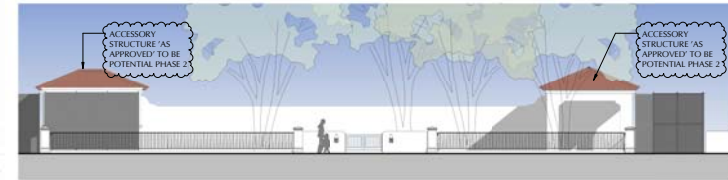
ARCOM REVISION  
Architect's Project # 16.024  
ARCOM Case # A-028-2018  
Zoning Case # Z-17-00032  
11 July 2018  
REVISIONS

AC-4.3

of X

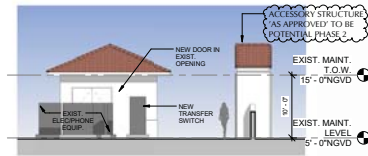


12. PLAYGROUND - EAST ELEVATION  
SCALE: 1/8" = 1'-0"  
ELEVATION ADDED



11. PLAYGROUND - WEST ELEVATION  
SCALE: 1/8" = 1'-0"  
ELEVATION ADDED

- EXTERIOR FINISHES:**
1. STUCCO WALLS, WINDOW SILLS & PIERS, HAND OF THE CRAFTSMAN STEEL, TROWELED FINISH COLOR: TMD WHITE (CC-58) BY BENJAMIN MOORE
  2. STUCCO TRIM, HAND OF THE CRAFTSMAN STEEL, TROWELED FINISH COLOR: TMD WHITE (CC-58) BY BENJAMIN MOORE
  3. SPANISH MEXICAN TILE ROOF, DAILE ACCENT & SCUPPERS MATERIAL: RED CLAY
  4. ALUMINUM WINDOWS & EXTERIOR DOORS COLOR: BRONZE KYNAR FINISH EXTERIOR
  5. ALUMINUM CLAD WOOD ANCHOR DOORS COLOR: BRONZE KYNAR FINISH EXTERIOR
  6. EXTERIOR GATES & FRAMES COLOR: GLASS SILPURY (N62) BY BENJAMIN MOORE AT DECORATIVE PLAYGROUND GATES
  7. WOOD RAFTER TAIL PAINTED COLOR: GLASS SILPURY (N62) BY BENJAMIN MOORE
  8. CAST STONE TRIM COLOR: TRD
  9. DRIP EDGE, GUTTERS & DOWNSPOUTS MATERIAL: COPPER
  10. EXTERIOR HARDSCAPE REFER TO LANDSCAPE DRAWINGS



2. MAINT. BLDG - NORTH ELEV.  
SCALE: 1/8" = 1'-0"



9. MAINT. BLDG - NORTH ELEV.  
SCALE: 1/8" = 1'-0"



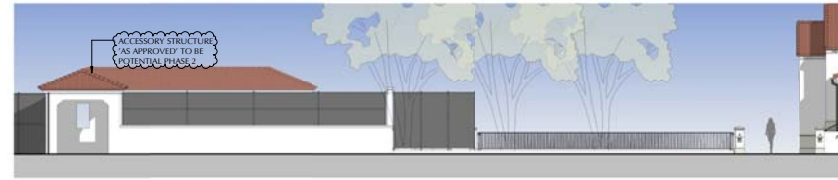
1. MAINT. BLDG - SOUTH ELEV.  
SCALE: 1/8" = 1'-0"



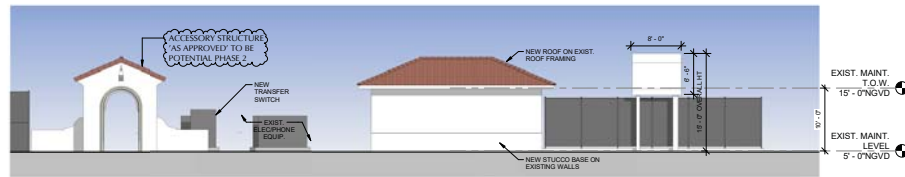
7. MAINT. BLDG - SOUTH ELEV.  
SCALE: 1/8" = 1'-0"



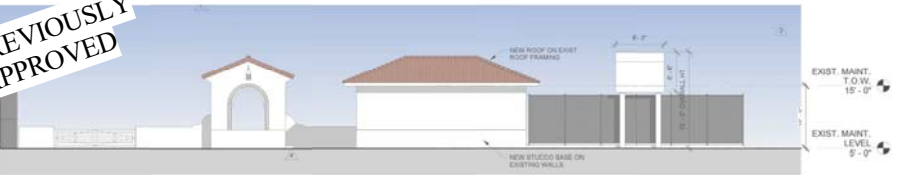
8. PLAYGROUND - SOUTH ELEVATION  
SCALE: 1/8" = 1'-0"  
ELEVATION ADDED



10. PLAYGROUND - NORTH ELEVATION  
SCALE: 1/8" = 1'-0"  
ELEVATION ADDED



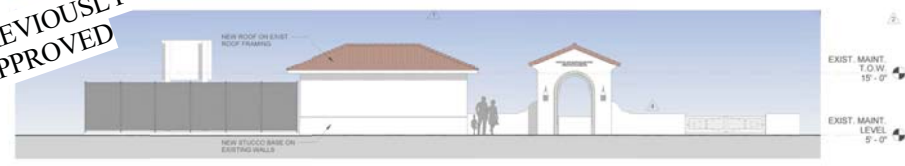
4. MAINT. BLDG & GATEWAY - WEST ELEV.  
SCALE: 1/8" = 1'-0"



6. MAINT. BLDG & GATEWAY - WEST ELEV.  
SCALE: 1/8" = 1'-0"



5. MAINT. BLDG & GATEWAY - EAST ELEV.  
SCALE: 1/8" = 1'-0"



3. MAINT. BLDG & GATEWAY - EAST ELEV.  
SCALE: 1/8" = 1'-0"

## ARCOM Presentation Exhibits

Stephen Boruff, AIA  
Architects + Planners, Inc.  
AAC 002226  
Architecture  
Planning  
Interior Architecture

901  
Northpoint Parkway  
Suite 101  
West Palm Beach  
Florida 33407

Stephen Boruff AR007995  
Architect of Record

New Construction for:

Town of  
Palm  
Beach

Morton  
and  
Barbara  
Mandel  
Recreation  
Center

340 Seaview Avenue, Palm  
Beach FL 33480

ARCOM REVISION  
Architect's Project # 16.024  
ARCOM Case # A-028-2018  
Zoning Case # Z-17-00032  
11 July 2018

REVISIONS

AC-4.4

of X

