

PARKING AND VALET OPERATIONS OVERVIEW



68 OFF STREET PARKING SPACES SECURED

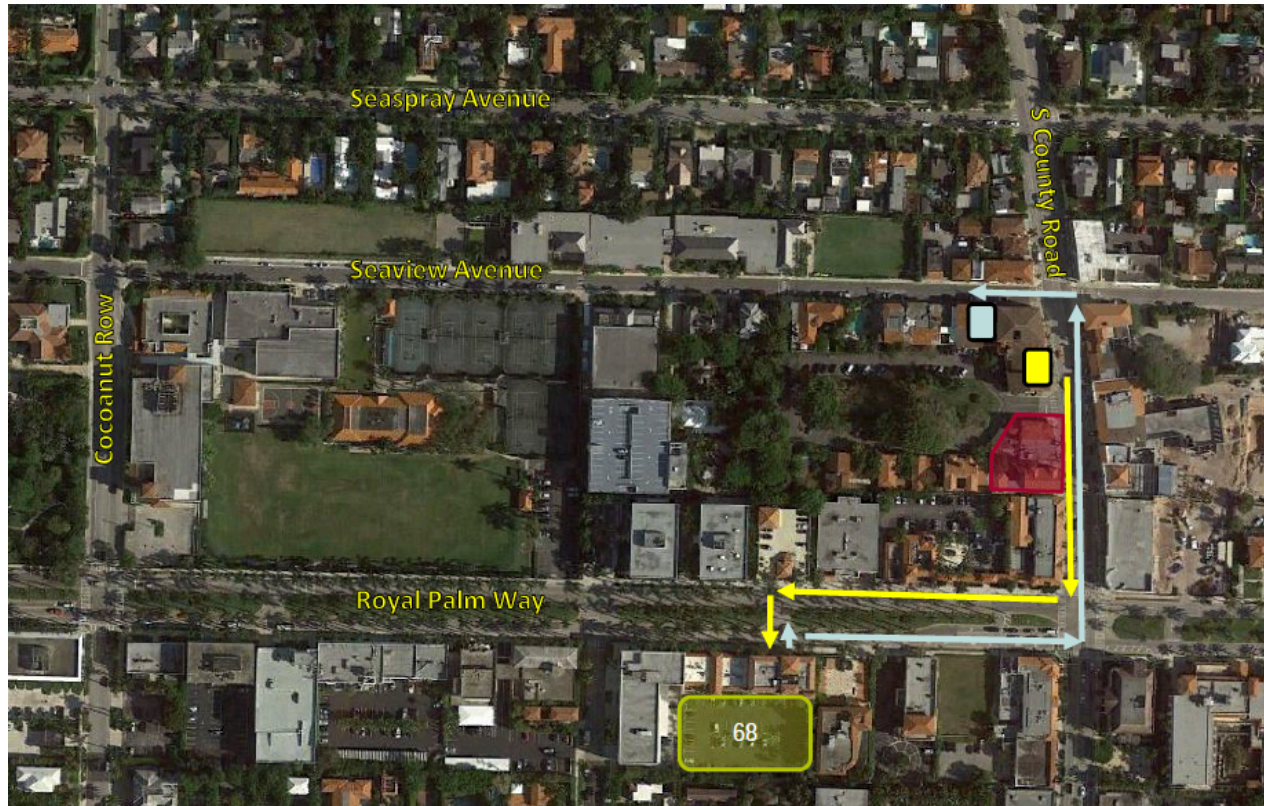
While not required, Carriage House has secured 68 parking spaces at 230 Royal Palm Way for after 5 PM use.



VALET CIRCULATION PATH 1

Patrons traveling south on S. County will use the valet drop off stand on South County Rd. Valet operator will park vehicles at 230 Royal Palm Way.

Valet circulation path 1 WILL NOT impact any Sea Streets or Phipps Plaza



LEGEND



INBOUND VALET CIRCULATION



OUTBOUND VALET CIRCULATION



VEHICLE DROP-OFF LOCATION



SITE



230 ROYAL PALM WAY (68 SPACES)



VEHICLE PICK-UP LOCATION

FIGURE 3

Valet Operations: Circulation Path 1
Carriage House
KHA # 14037900

Kimley»Horn

VALET CIRCULATION PATH 2

Patrons traveling north on S. County will use the valet stand on Seaview west of S. County Rd. Valet operator will park vehicles at 230 Royal Palm Way. All vehicle pick up will be at the Seaview valet stand.

Valet circulation path 2 WILL NOT impact Phipps Plaza or residential Sea Street neighborhoods



LEGEND






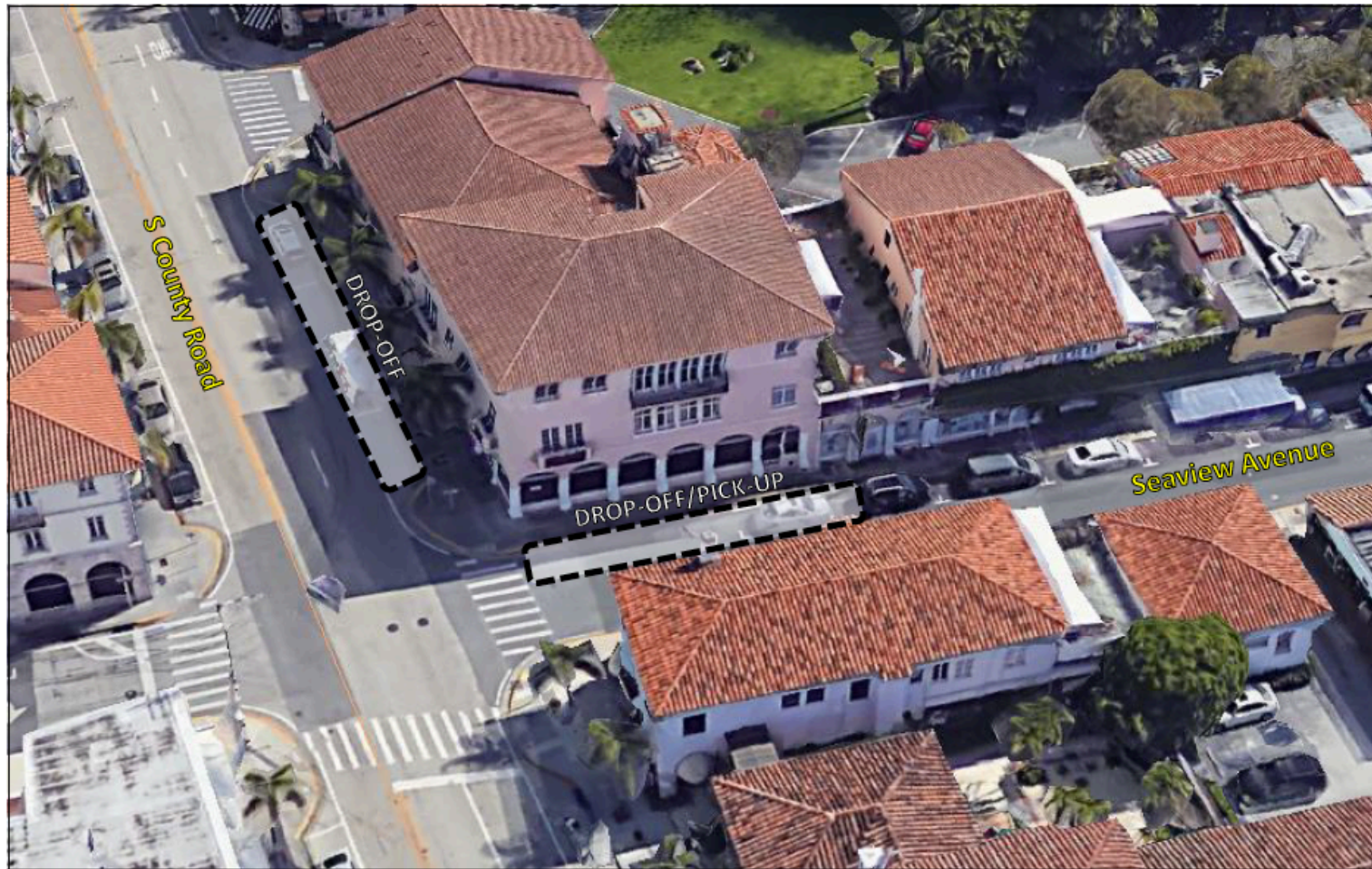
-  INBOUND VALET CIRCULATION
-  OUTBOUND VALET CIRCULATION
-  VEHICLE DROP OFF/PICK-UP LOCATION
-  SITE
-  230 ROYAL PALM WAY (68 SPACES)

FIGURE 4

Valet Operations: Circulation Path 2
Carriage House
KHA # 14037900

Kimley»Horn

VALET STANDS OVERHEAD VIEW



LEGEND

VEHICLE DROP-OFF LOCATION
(4 SPACES)

VEHICLE DROP-OFF/PICK-UP LOCATION
(COMMERCIAL LOADING AREA + 1 SPACE)

FIGURE 5

Valet Locations
Carriage House
KHA # 14037900

Kimley»Horn

S COUNTY VALET DROP OFF STAND RENDERING



VIEW LOOKING SOUTHWEST
AT VEHICLE DROP-OFF LOCATION AT WEST SIDE OF S. COUNTY RD

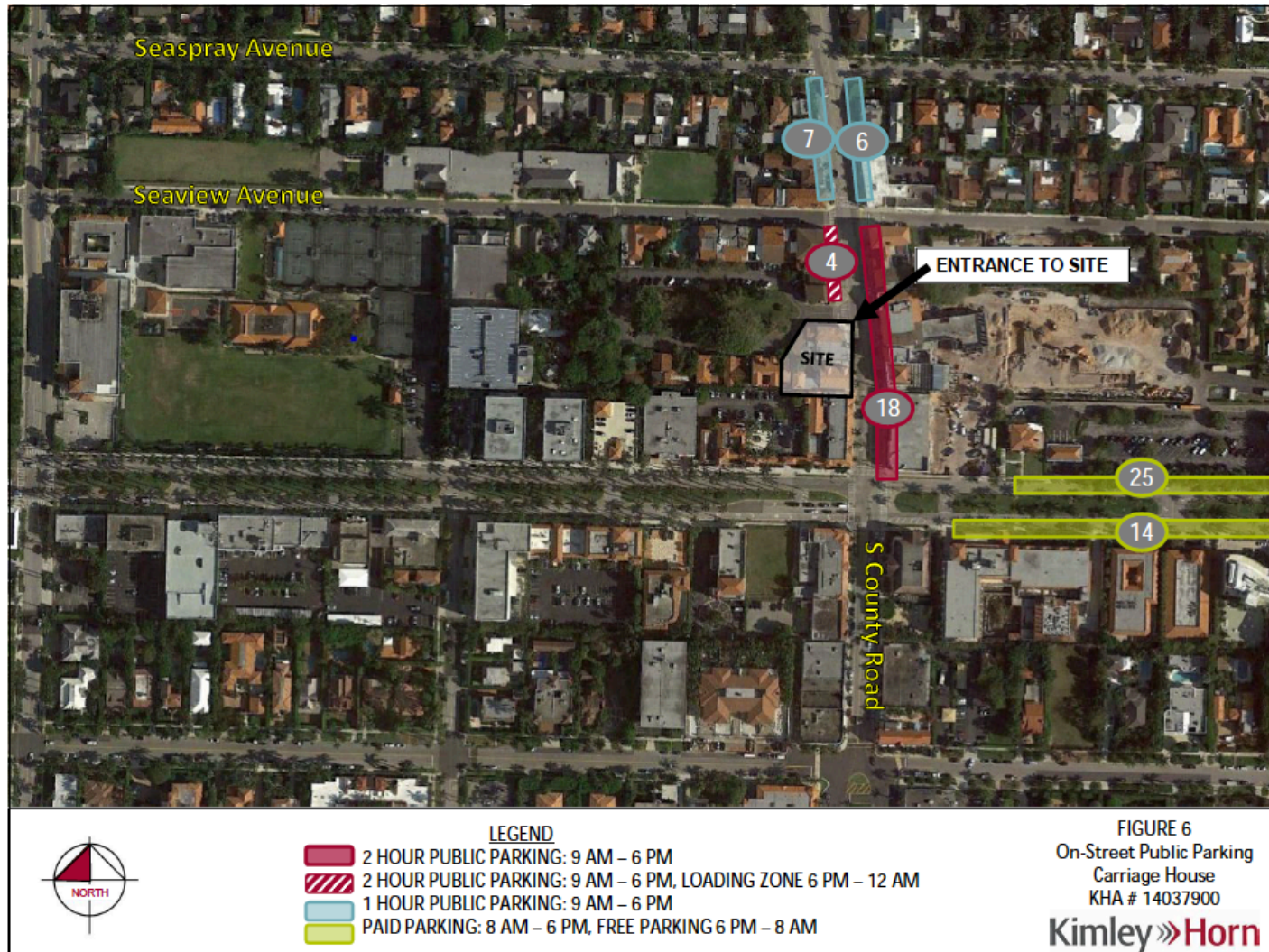
SEAVIEW VALET DROP OFF / PICK UP STAND RENDERING



VIEW LOOKING SOUTHWEST
AT VEHICLE DROP-OFF/PICK-UP LOCATION AT SOUTH SIDE OF SEAVIEW AVE

ON STREET PARKING IS AVAILABLE

There are 74 on-street public parking spaces in the general vicinity of the proposed club - more than enough to accommodate lunch time demand



PLEASE SUPPORT THE CARRIAGE HOUSE AND HELP
BRING THESE LANDMARKED C. 1930 FATIO / MIZNER
BUILDINGS BACK TO LIFE

The Carriage House private club business model is what makes the investment into meticulous rehab possible



THANK YOU