

THIS INSTRUMENT WAS PREPARED BY AGreen  
IN THE OFFICES OF KESHAVARZ & ASSOCIATES, INC.  
4425 BEACON CIRCLE, SUITE 201  
WEST PALM BEACH, FLORIDA 33407  
TEL: (407) 844-8600 FAX: (407) 844-5960

This is not a certified copy

# GRAHAM ECKES ACADEMY

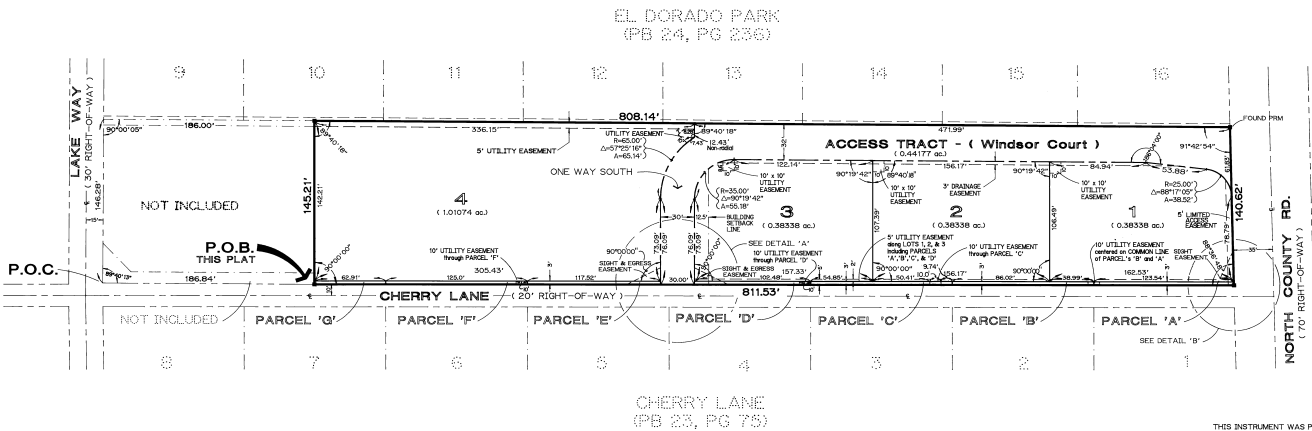
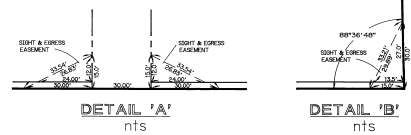
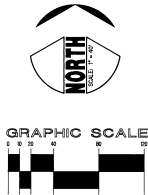
TOWN of PALM BEACH, FLORIDA - BEING A PORTION OF  
GOVERNMENT LOT 3, SECTION 10, TOWNSHIP 43 SOUTH, RANGE 43 EAST and  
GOVERNMENT LOT 2, SECTION 11, TOWNSHIP 43 SOUTH, RANGE 43 EAST,  
PALM BEACH COUNTY, FLORIDA

SHEET 2 of 2

AUGUST, 1990

106

STATE OF FLORIDA  
COUNTY OF PALM BEACH  
THIS PLAT WAS FILED FOR  
RECORD AT \_\_\_\_\_ DAY OF \_\_\_\_\_  
THIS \_\_\_\_\_ AS, 1990, AND  
DULY RECORDED IN PLAT  
BOOK \_\_\_\_\_ ON PAGES \_\_\_\_\_  
JOHN S. DANKLE, CLERK  
CIRCUIT COURT, 8TH  
JY



THIS INSTRUMENT WAS PREPARED BY AGREEN  
IN THE OFFICE OF KESHAVARZ & ASSOCIATES, INC.  
4409 BEACON CIRCLE, SUITE 201  
WEST PALM BEACH, FLORIDA 33407  
TEL: (407) 844-8600 FAX: (407) 844-5960

■ - DENOTES SET PERMANENT REFERENCE MONUMENT  
UNLESS NOTED OTHERWISE