

THE PALM HOUSE

160 ROYAL PALM WAY
PALM BEACH, FLORIDA 33480

RECOMMENDATIONS FOR
IMPROVEMENTS AND COMPLETION

ARCOM SECOND SUBMITTAL
FEBRUARY 5TH, 2025



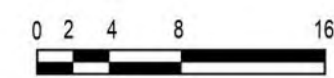
The Palm House Hotel
160 Royal Palm Way



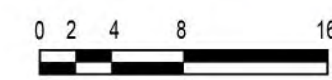
COOPER CARRY
License N° AA26000496 | ARCS-24-0681
FEBRUARY 5TH, 2025 | ZON-23-015



OVERALL NORTH ELEVATION - PROPOSED



OVERALL NORTH ELEVATION - ARCOM APPROVED



The Palm House Hotel
160 Royal Palm Way



COOPER CARRY
License N° AA26000496 | ARCS-24-0681
FEBRUARY 5TH, 2025 | ZON-23-015

EXTERIOR ELEVATION - NORTH

A107.B

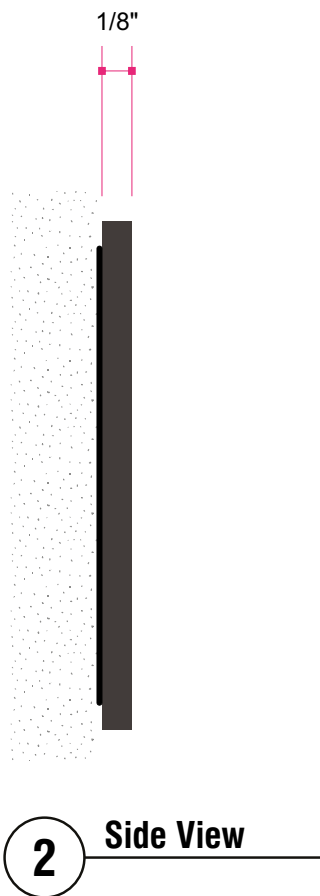
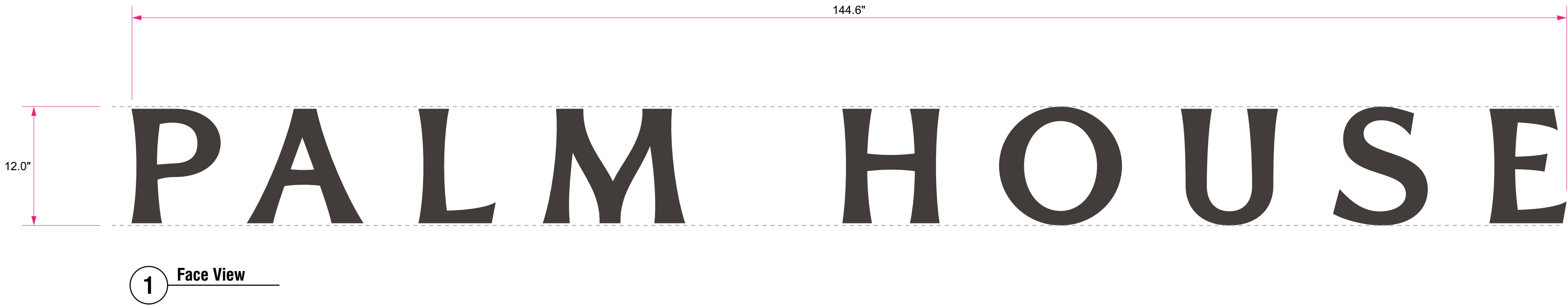
HOTEL SIGNAGE DETAIL

3 mm thick patina brass cut lettering
Font: EB Garamond regular / numerals proportional lining / zero proportional old style

COLOR REFERENCES

 DARK BRONZE
PATINA BRASS

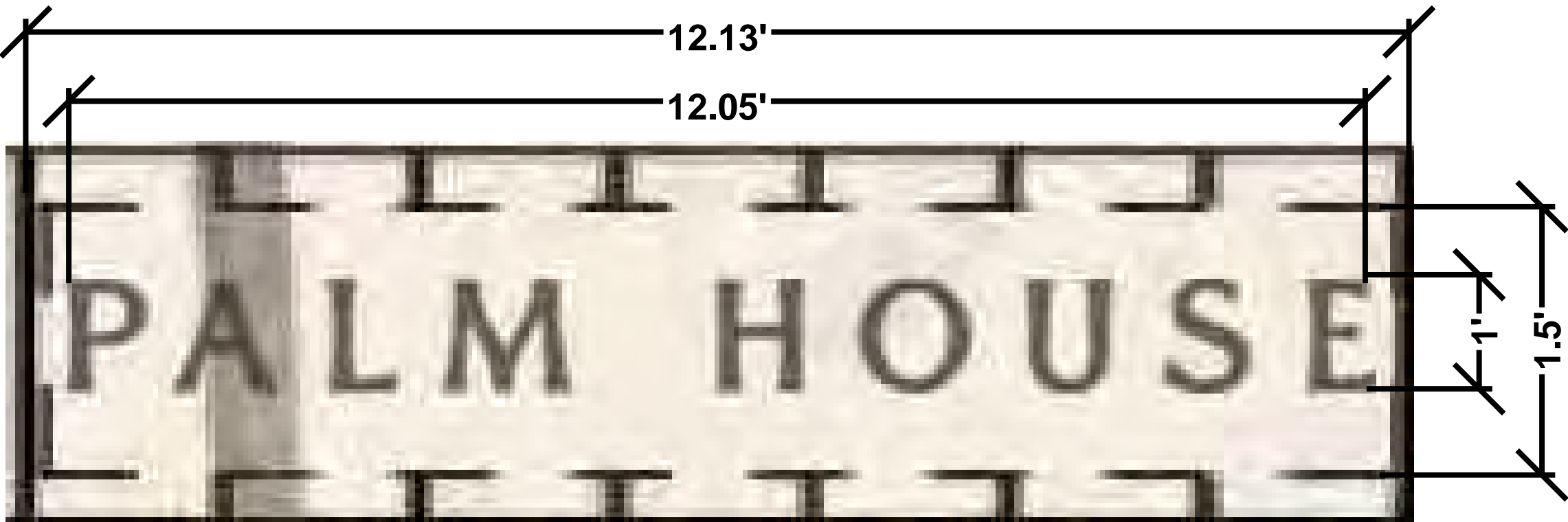
PHYSICAL SAMPLE



ENLARGED PARTIAL ELEVATION OF SIGN AREA

THE SIGNAGE AREA IS 12 SF, WHICH DOES NOT EXCEED 20 SF MAXIMUM ALLOWED PER CHAPTER 134, ARTICLE XI - SIGNS, DIVISION 3 - COMMERCIAL DISTRICTS, SEC. 134-2437 - BUILDING IDENTIFICATION, BUSINESS IDENTIFICATION, AND PROPERTY IDENTIFICATION SIGNS.

THE HEIGHT OF THE PALM HOUSE SIGN IS 13.2' (26.19' NAVD) MEASURED FROM GRADE.



HOTEL SIGNAGE DETAIL

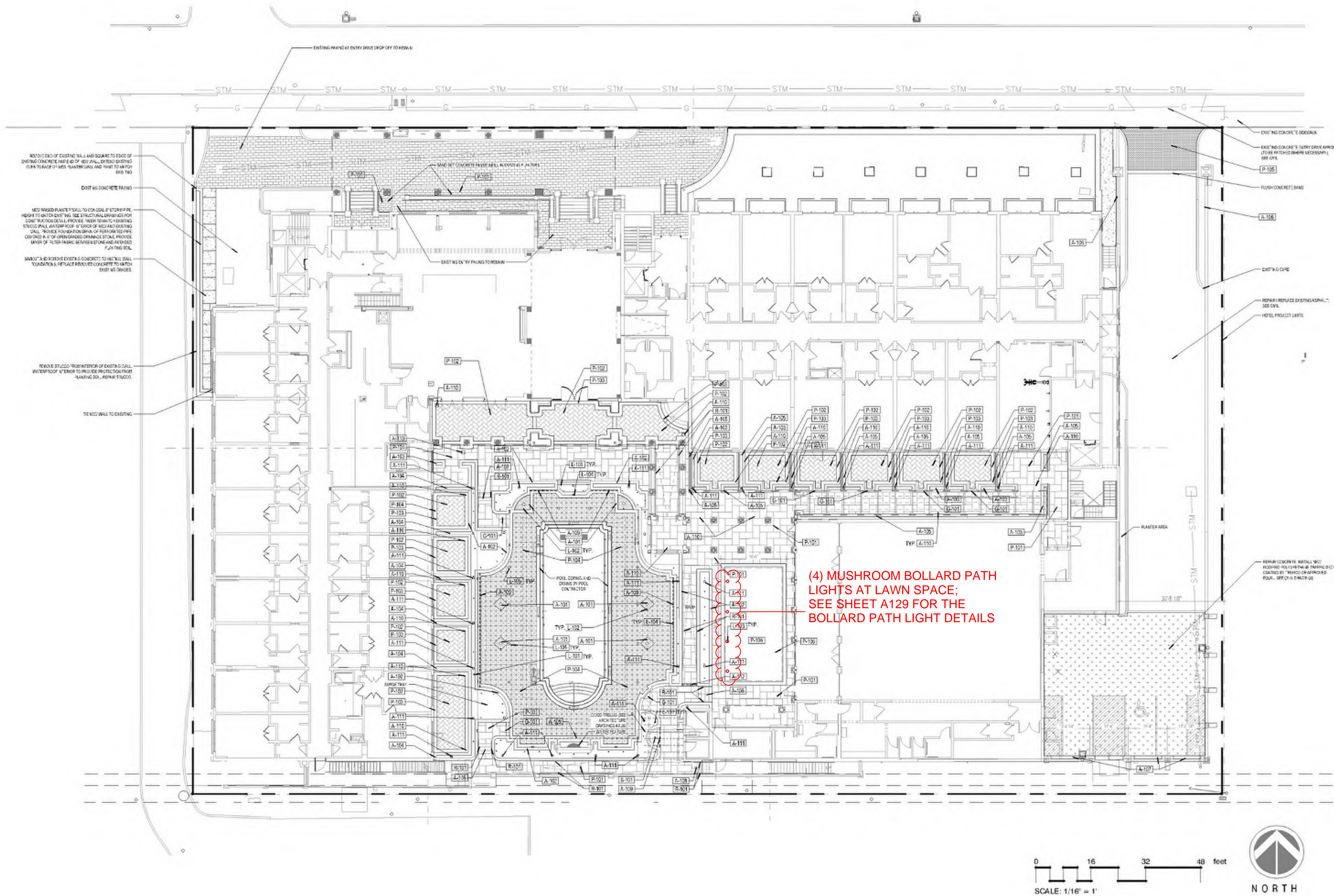
A107.D



The Palm House Hotel
160 Royal Palm Way



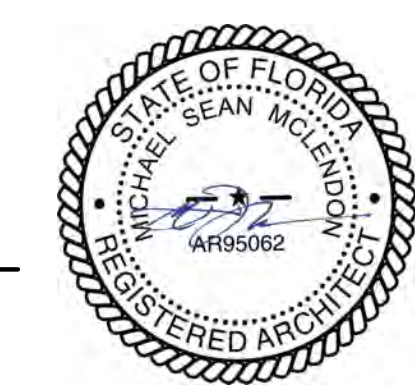
COOPER CARRY
License N° AA26000496 | ARCS-24-0681
FEBRUARY 5TH, 2025 | ZON-23-015



REFERENCE NOTES SCHEDULE

SYMBOL	ARCHITECTURAL FEATURE DESCRIPTION	DETAIL
A-101	FLUSH TREE WELL	3/####
A-102	POOL DECK PLANTER: CMU CORE WALLS WITH STUCCO FINISH, 12" CLASSIC WALL CAP BY STEPSTONE OR APPROVED EQUAL COLOR AND FINISH TBD; 6" OF DRAINAGE STONE COVERED WITH NONWOVEN FILTER FABRIC AND AMENDED PLANTING SOIL, WATERPROOF INTERIOR OF PLANTER; PROVIDE INTERIOR DRAIN THROUGH CONCRETE SLAB BELOW; PROVIDE IRRIGATION TO PLANTERS	2/####
A-103	PATIO ROOM PLANTER: CMU CORE WALLS WITH 1" STUCCO FINISH, 12" CLASSIC WALL CAP BY STEPSTONE OR APPROVED EQUAL COLOR AND FINISH TBD; 6" OF DRAINAGE STONE COVERED WITH NONWOVEN FILTER FABRIC AND AMENDED PLANTING SOIL, WATERPROOF INTERIOR OF PLANTER; PROVIDE INTERIOR DRAIN THROUGH CONCRETE SLAB BELOW; PROVIDE IRRIGATION TO PLANTERS	4/####
A-104	WESTERN PATIO ROOM METAL ARBOR	4/L1.22
A-105	EASTERN PATIO ROOM AND WALKWAY METAL ARBOR	2/L1.22
A-106	STAINLESS STEEL CABLE TRELLIS SYSTEM BY SCS, TAINLESS CABLE SOLUTIONS OR APPROVED EQUAL, WALL MOUNT, 12" GRID, 30' W X 8' HT TOTAL AREA	2/L4.01
A-107	HANGING PLANTER - WILSHIRE BOX HANGING PLANTER BY TOURNESOL, 96"L X 12"W X 18"H, COLOR TBD, INSTALL PER MANUFACTURER'S DETAILS AND SPECIFICATIONS, CONNECT DRAINAGE HOLES WITH BLACK PVC AND ROUTE AROUND EDGE OF WALL TOWARD DUMPSTER AREA	1/####
A-108	TILE VENEER STEPS, SEE ARCHITECTURE FOR MORE DETAILS	3/L2.01
A-109	SLOT DRAIN - SERIES 7000 SLOT DRAIN BY SLOT DRAIN SYSTEMS, INSTALL PER MANUFACTURER'S DETAILS AND SPECIFICATIONS, PROVIDE 6X6 CATCH BASINS AT EACH RUN OF SLOT DRAIN	5/####
A-110	AREA DRAIN, INSTALL PER MANUFACTURER'S DETAILS, SEE DRAINAGE PLANS	6/####
A-111	PLANTER DRAIN, INSTALL PER MANUFACTURER'S DETAILS, SEE DRAINAGE PLANS	
A-112	TRENCH DRAIN - ALUMINUM TRENCH DRAIN SYSTEM BY ZURN, ZA880-156 WITH ORNAVENTAL DRAIN GRATE OR APPROVED EQUAL, INSTALL IN CONCRETE CHANNEL PER MANUFACTURER'S DETAILS	
SYMBOL	GATE DESCRIPTION	DETAIL
G-101	MONTAGE PLUS MAJESTIC GATE BY AMERISTAR, 48" HT, WELD ON BOX HINGE ATTACHED TO POST MOUNTED TO CONCRETE SLAB BELOW TILE, SELF-CLOSING, SELF-LATCHING LATCH AS REQUIRED BY LOCAL CODES	7/####
SYMBOL	LIGHT DESCRIPTION	DETAIL
L-101	PLANTER LIGHT, INTERLUX CLIVO; SEE ELECTRICAL/LIGHTING PLANS	
L-102	TREE UP-LIGHT, BK LUXITING OR ARIALLIGHT OMEGA; SEE ELECTRICAL/LIGHTING PLANS	
L-103	MUSHROOM BOLLARD PATH LIGHT: AJ100-TS-40F BUCK BY LANDSCAPE FORMS; SEE ELECTRICAL/LIGHTING PLANS	
L-104	WALL LIGHT/STEP LIGHT	
L-105	BOLLARD LIGHT	
SYMBOL	PAVING DESCRIPTION	DETAIL
P-101	COURTYARD PAVER TYPE A, SILVERLAKE BY MIRAGE, MORTAR SET ON CONCRETE SLAB (SEE ARCHITECTURAL DRAWINGS, 24X48, RUNNING BOND PATTERN, COLOR VARIES	10/L2.01
P-102	COURTYARD PAVER TYPE B, QUARTZITI 2.0 BY MIRAGE, MORTAR SET ON CONCRETE SLAB (SEE ARCHITECTURAL DRAWINGS, 12X24 HERRINGBONE FILEDS, COLOR GLACIER	10/L2.01
P-103	PAVER BORDER TYPE B, QUARTZITI 2.0 BY MIRAGE, MORTAR SET ON CONCRETE SLAB (SEE ARCHITECTURAL DRAWINGS, 12X12	10/L2.01
P-104	POOL DECK TILE, SEE INTERIOR DRAWINGS	
P-105	STAMPED VEHICULAR CONCRETE, RUNNING BOND PATTERN, SCOPFIED INTEGRAL COLOR SG 160 SUNSET RED	2/L2.01
P-106	ARTIFICIAL TURF SYSTEM - SYNLAUGUSTINE X 47 BY SYNLAWN; INSTALL PER MANUFACTURER'S DETAILS AND SPECIFICATIONS; INSTALL DRAINAGE SYSTEM AS REQUIRED BY MANUFACTURER	6/L2.01
SYMBOL	RAIL DESCRIPTION	DETAIL
R-101	ORNAMENTAL BRASS HANDRAIL - CONTRACTOR SHALL COORDINATE STYLE OF RAIL WITH ARCHITECTURAL DRAWINGS AND PREPARE FIELD MEASURED SHOP DRAWINGS FOR APPROVAL	5/L2.01
SYMBOL	SITE FURNISHINGS DESCRIPTION	DETAIL
S-101	FREESTANDING SHOWER BY OUTDOOR SHOWER CO.; MODEL BS-2000-ADA; SINGLE SUPPLY SHOWER UNIT WITH 6A METERED PUSH VALVE; STAINLESS STEEL FINISH; INSTALL ON 6" STAINLESS STEEL BASE CYLINDER WITH BRACKETS PER MANUFACTURER'S DETAILS IN COORDINATION WITH THICKSET TILE FLOORS	

(4) MUSHROOM BOLLARD PATH LIGHTS AT LAWN SPACE; SEE SHEET A129 FOR THE BOLLARD PATH LIGHT DETAILS



Motive Path Light

Spec Sheet | AJ100



Housing & Materials

A UV stable, impact modified diffused acrylic lens seals to the cast aluminum round luminaire housing. Luminaire mounts via a cast aluminum hub bolted directly to the top of cast aluminum pole. The luminaire’s cast lid is secured with three socket head set screws. All hardware is magni-coated.

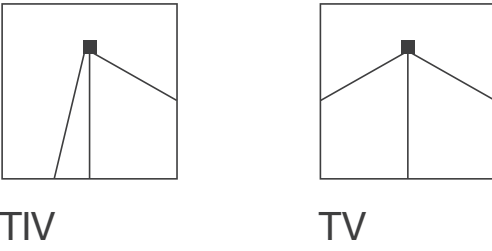
Electrical

Internally mounted surge protected 120V through 277V 50/60Hz electronic driver. -40°C start temperature., leading edge and trailing edge phase-cut dimmable. Motive path light ships prewired.

Light Engine

Cast aluminum light cartridge features high powered LEDs mounted to a RoHS compliant circuit board delivering indirect lighting in conjunction with semi-specular aluminum reflector. Motive Path Light can be configured with a Type IV or Type V distribution. The replaceable cartridge provides ease of installation and serviceability. Available in 2700K, 3000K, 3500K, and 4000K. >80 CRI across all available color temperatures.

Distributions

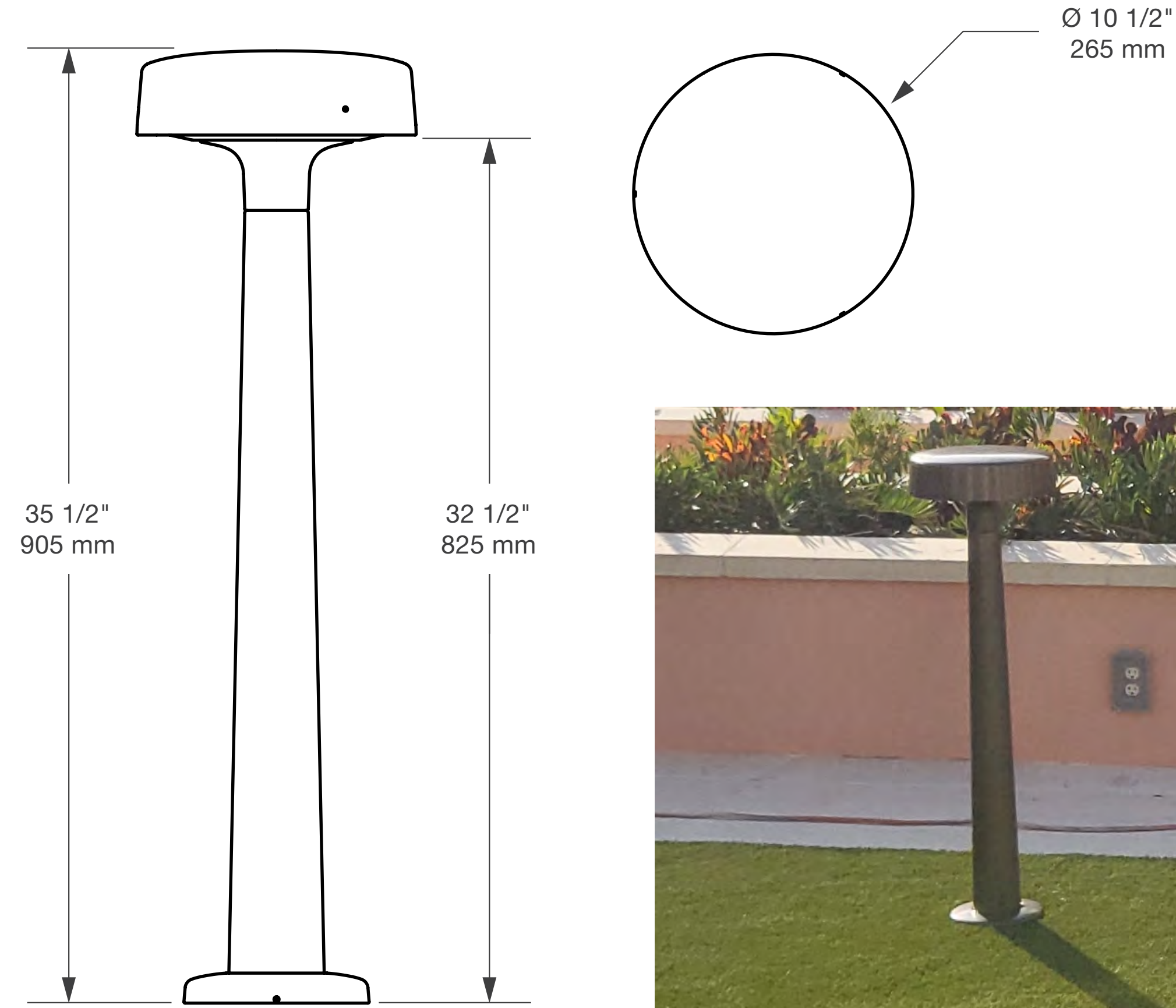


Warranty

LED lighting products are warranted for six years.

Certification

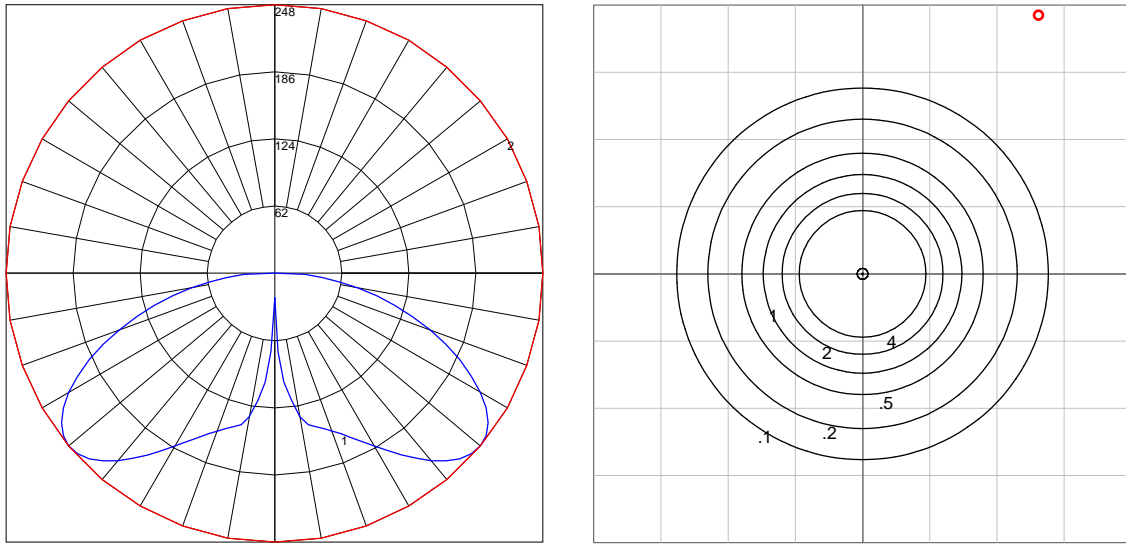
UL Listed for Wet Location, CE, International Dark Sky Approved, Buy America Compliant, RoHS Compliant



ENLARGED DETAIL _
L-103 MUSHROOM BOLLARD PATH LIGHT



REFERNCE PHOTO _
L-103 MUSHROOM BOLLARD PATH LIGHT



Maximum Candela=247.5

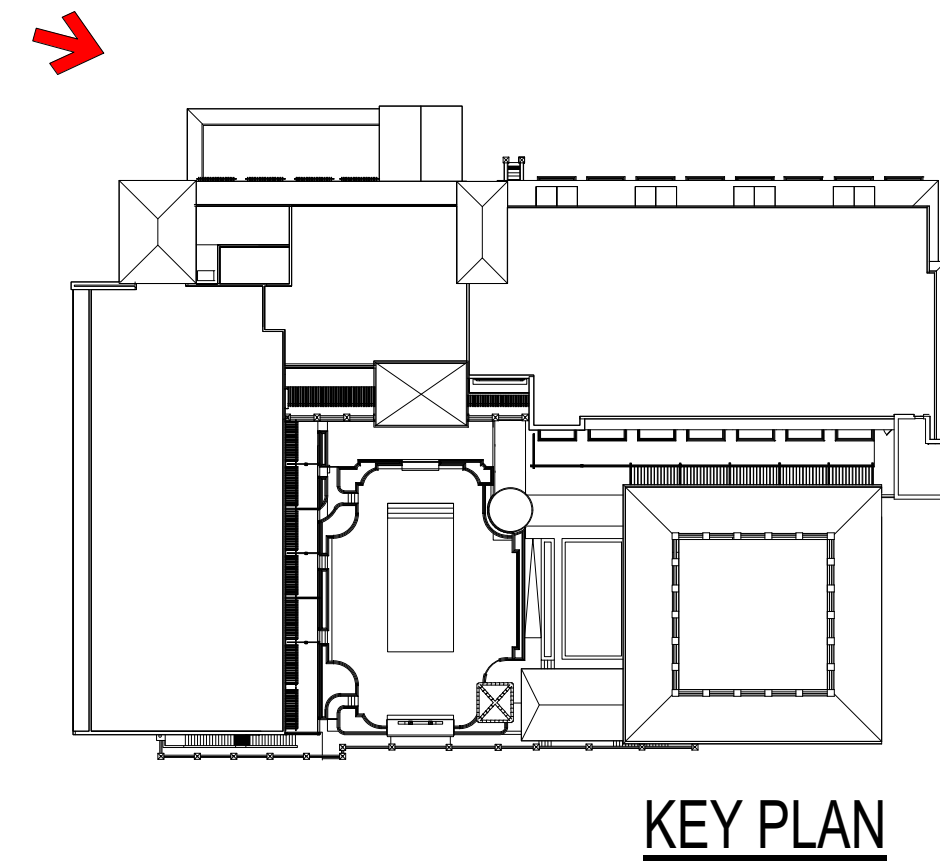
Model	Distribution Type	Drive Current	Delivered Lumens	System Wattage	Bug Rating
AJ100-T5-40F	Type V	400mA	1011	10.3	B1-U0-G1

LAWN SPACE PHOTOS





FRONT APPROACH FROM ROYAL PALM WAY



The Palm House Hotel
160 Royal Palm Way

