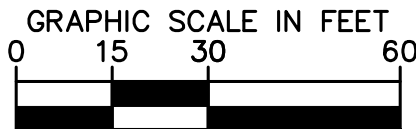


LEGEND



	PROPERTY LINE	— SFM — SFM —	EXIST SANITARY FORCE MAIN
	CENTERLINE OF R/W	— SS — SS —	EXIST SANITARY PIPE
	UTILITY CROSSING		EXIST SANITARY MANHOLE
SFM — SFM —	PROP. SAN FORCE MAIN PIPE	— F — F —	EXIST FIRE LINE PIPE
SS — SS —	PROP. SANITARY PIPE		EXIST FIRE HYDRANT
	PROP. SANITARY MANHOLE	— ROW — ROW —	EXIST FIRE DEPT CONNECTION
F — F — F —	PROP. FIRE LINE PIPE	— ROW — ROW —	EXIST WATER PIPE
W — W — W —	PROP. WATER LINE PIPE	— IRR — IRR —	EXIST IRRIGATION MAIN PIPE
	PROP. FIRE HYDRANT	— FOC — FOC —	EXIST FIBER OPTIC LINE
— ROW — ROW —	PROP. FIRE DEPT CONNECTION	— OE — OE —	EXIST OVERHEAD LINE
— ROW — ROW —	PROP. RECLAIMED WATER MAIN	— TEL — TEL —	EXIST TELEPHONE LINE
— IRR — IRR —	PROP. IRRIGATION MAIN PIPE	— COM — COM —	EXIST COMMUNICATIONS LINE
— FOC — FOC —	PROP. FIBER OPTIC LINE	E — E — E —	EXIST UNDERGROUND ELECTRIC
— OE — OE —	PROP. OVERHEAD LINE	— FPL — FPL —	EXIST FPL LINE
— TEL — TEL —	PROP. TELEPHONE LINE	— E — E —	EXIST ELECTRICAL LINE
— COM — COM —	PROP. COMMUNICATIONS LINE	— GAS — GAS —	EXIST GAS LINE
E — E — E —	PROP. UNDERGROUND ELECTRIC		EXIST UTILITY EASEMENTS
— FPL — FPL —	PROP. FPL LINE	— STRM — STRM —	STORM PIPE (SEE PAVING, GRADING & DRAINAGE PLANS)
— E — E —	PROP. ELECTRICAL LINE		STORM AREA INLET
— GAS — GAS —	PROP. GAS LINE		STORM CURB INLET
	PROP. UTILITY EASEMENTS		STORM MANHOLE

UTILITY NOTES

1. CONTRACTOR SHALL FURNISH AND INSTALL NECESSARY PIPE AND FITTINGS TO TRANSITION PIPE MATERIALS WHEN REQUIRED AND TO CONNECT TO BUILDING PLUMBING.
2. CONTRACTOR SHALL SUPPORT AND PROTECT ALL EXISTING UTILITIES WHEN CONSTRUCTING NEW UTILITIES.
3. ALL MANHOLES, VALVES, CLEANOUTS AND OTHER SUCH BOXES IN PAVEMENT OR SIDEWALKS SHALL BE SET FLUSH WITH PAVEMENT TO MATCH THE PROPOSED SLOPE AND SHALL BE H=20 TRAFFIC RATED.
4. ANY TREES OR SHRUBS PLANTED WITHIN WATER, SEWER, OR DRAINAGE EASEMENTS SHALL CONFORM TO THE PALM BEACH STANDARD DETAILS.
5. NO PROPOSED IMPROVEMENTS, BUILDINGS OR ANY KIND OF CONSTRUCTION CAN BE PLACED ON OR WITHIN ANY WATER, SEWER, OR DRAINAGE EASEMENTS, UNLESS APPROVED BY THE PALM BEACH CITY ENGINEER.
6. NO PROPOSED STRUCTURES SHALL BE INSTALLED WITHIN A HORIZONTAL DISTANCE OF 10- FEET FROM ANY EXISTING OR PROPOSED WATER, SEWER, OR DRAINAGE FACILITIES, UNLESS APPROVED BY THE PALM BEACH CITY ENGINEER.
7. ALL WATER MAIN (WM) SHALL BE PVC C-900 DR-18 UNLESS OTHERWISE NOTED.
8. ALL FIRE MAIN (FM) SHALL BE DIP WITH ALL JOINTS REINFORCED WITH MEGALUGS UNLESS OTHERWISE NOTED. ALL FIRE MAIN SHALL BE LAID AT 36" MIN. COVER. ALL FIRE RELATED CONSTRUCTION SHALL FOLLOW THE FLORIDA FIRE PREVENTION CODE, LIFE 5TH EDITION – FLORIDA SPECIFIC NFPA 1, FIRE CODE, 2012 EDITION AND FLORIDA SPECIFIC NFPA 101, LIFE SAFETY CODE, 2012 EDITION.
9. ALL DUCTILE IRON PIPE (DIP) SHALL BE CLASS 350 UNLESS OTHERWISE NOTED. DIP SHALL BE MARKED PER FLORIDA DEPARTMENT OF ENVIRONMENTAL PROTECTION (FDEP) STANDARDS.
10. ALL NEW FIRE HYDRANTS SHALL HAVE "OUT OF SERVICE" SIGNS AFFIXED AT TIME OF INSTALLATION. SIGNS SHALL REMAIN IN PLACE UNTIL THE WATER SYSTEM IS CLEARED FOR USE.
11. ALL WATER MAIN AND FORCE MAINS SHALL HAVE A MINIMUM 36" COVER OVER THE TOP OF THE PIPE. UNLESS OTHERWISE NOTED. WATER AND FIRE MAINS SHALL HAVE MIN. 6" VERTICAL SEPARATION FROM EACH OTHER.
12. A MINIMUM HORIZONTAL DISTANCE OF 10 FEET MUST BE PROVIDED BETWEEN WATER MAINS AND STORM OR SANITARY SEWER. ALL FITTINGS FOR WATER MAIN AND FIRE MAIN SHALL BE DUCTILE IRON MECHANICAL JOINT FITTINGS UNLESS OTHERWISE NOTED.
13. WATER METER SIZES SHALL BE DESIGNED BY ENGINEER OF RECORD AND SHALL BE CHECKED AND AUTHORIZED BY PALM BEACH UTILITIES DIVISION.
14. PIPE DEFLECTION OF WATER MAIN AND FIRE MAIN SHALL NOT EXCEED MANUFACTURER'S RECOMMENDATIONS.
15. ALL GRAVITY SEWER MAINS SHALL BE PVC SDR-26 UNLESS OTHERWISE NOTED.
16. ALL GRAVITY SEWER LATERALS SHALL BE PVC SDR-35 UNLESS OTHERWISE NOTED.
17. ALL SEWER FORCE MAIN (SFM) SHALL BE PVC C-900 DR-18 UNLESS OTHERWISE NOTED. ALL SEWER FORCE MAIN IS PRIVATE.
18. ANY VITRIFIED CLAY PIPE (VCP) DAMAGED BY NEW CONSTRUCTION OR CONNECTIONS SHALL BE REPLACED WITH NEW SANITARY SEWER MAIN PIPE.
19. SANITARY SEWER PIPE LENGTHS ARE MEASURED FROM CENTER OF MANHOLE TO CENTER OF MANHOLE. CONTRACTOR SHALL ADJUST LISTS OF PVC TO DIP AS SHOWN IN PROFILE.
20. ALL SEWER LATERALS SHALL BE CONNECTED TO SEWER MAIN AND NOT DIRECTLY INTO SEWER MAINHOLES.
21. EXISTING WATER MAIN AND SEWER MAIN SHALL BE REMOVED AFTER PROPOSED WATER MAIN AND/OR SEWER MAIN HAS BEEN TESTED AND ACCEPTED BY PALM BEACH COUNTY HEALTH DEPARTMENT AND EXISTING SERVICES HAVE BEEN RELOCATED.
22. PROPOSED WATER AND SEWER IMPROVEMENTS IN PRIVATE PROPERTY SHALL MEET PALM BEACH COUNTY HEALTH DEPARTMENT SEPARATION REQUIREMENTS, THESE CONFLICTS WILL BE ADDRESS DURING CONSTRUCTION AND WON'T AFFECT THE PUBLIC SAFETY.
23. CONTRACTOR SHALL COORDINATE UNDERGROUND ELECTRIC SERVICE CONNECTION WITH FPL FOR CONDUIT SIZE AND BURIED DEPTH REQUIREMENT.
24. THE PALM BEACH UTILITIES DIVISION MUST BE GIVEN AT LEAST 48 HOURS NOTIFICATION PRIOR TO ANY SHUT-DOWN AND/OR REMOVAL OF EXISTING WATER MAIN OR SANITARY SEWER LINES.
25. CITY MAINTAINED UTILITIES WILL NEED TO BE TESTED AND PROTECTED (IE. PAVED AT LEAST UP TO FIRST LIFT, IF NOT ROADWAY) PRIOR TO ISSUANCE OF CERTIFICATION OF OCCUPANCY.
26. LEAD FREE BRASS WATER WORKS PRODUCTS SHALL MEET THE REQUIREMENT OF ASNI/AWWA C800 AND THE MAXIMUM LEAD CONTENT OF S.3872 AND NSF 61 ANNEX G. THE MANUFACTURER'S DESIGNATION AS A LEAD FREE PRODUCT SHALL BE PERMANENTLY STAMPED OR CAST INTO THE PRODUCTS BODY. EFFECTIVE JANUARY 1, 2013, ONLY LEAD FREE BRASS WATER WORKS PRODUCTS SHALL BE INSTALLED IN CONTACT WITH POTABLE WATER.
27. ALL PROPOSED BACKFLOW PREVENTERS AND DOUBLE DETECTOR CHECK VALVES SHALL BE USC CERTIFIED AND LEAD FREE.

ANY BUILDING FIRE LINE SHOWN ON THESE PLANS IS BEING SHOWN FOR COORDINATION PURPOSES ONLY. KIMLEY-HORN IS ONLY RESPONSIBLE FOR THE DESIGN OF THE WATER MAIN UP TO THE POINT OF SERVICE NOTED ON THE PLANS. PLEASE SEE PLANS BY (FIRE LINE DESIGNER) FOR PLAN AND DETAILS OF THE BUILDING FIRE LINE BEYOND THE POINT OF SERVICE.

VERTICAL DATUM
ELEVATIONS SHOWN HEREON ARE BASED ON THE
NORTH AMERICAN VERTICAL DATUM OF 1988.
NAVD '88 ELEV. + 1.52' = NGVD '29 ELEVATION

THE PRESENCE OF GROUNDWATER SHOULD BE ANTICIPATED. CONTRACTOR'S BID SHALL INCLUDE CONSIDERATION FOR ADDRESSING THIS ISSUE AND OBTAINING ALL NECESSARY PERMITS.

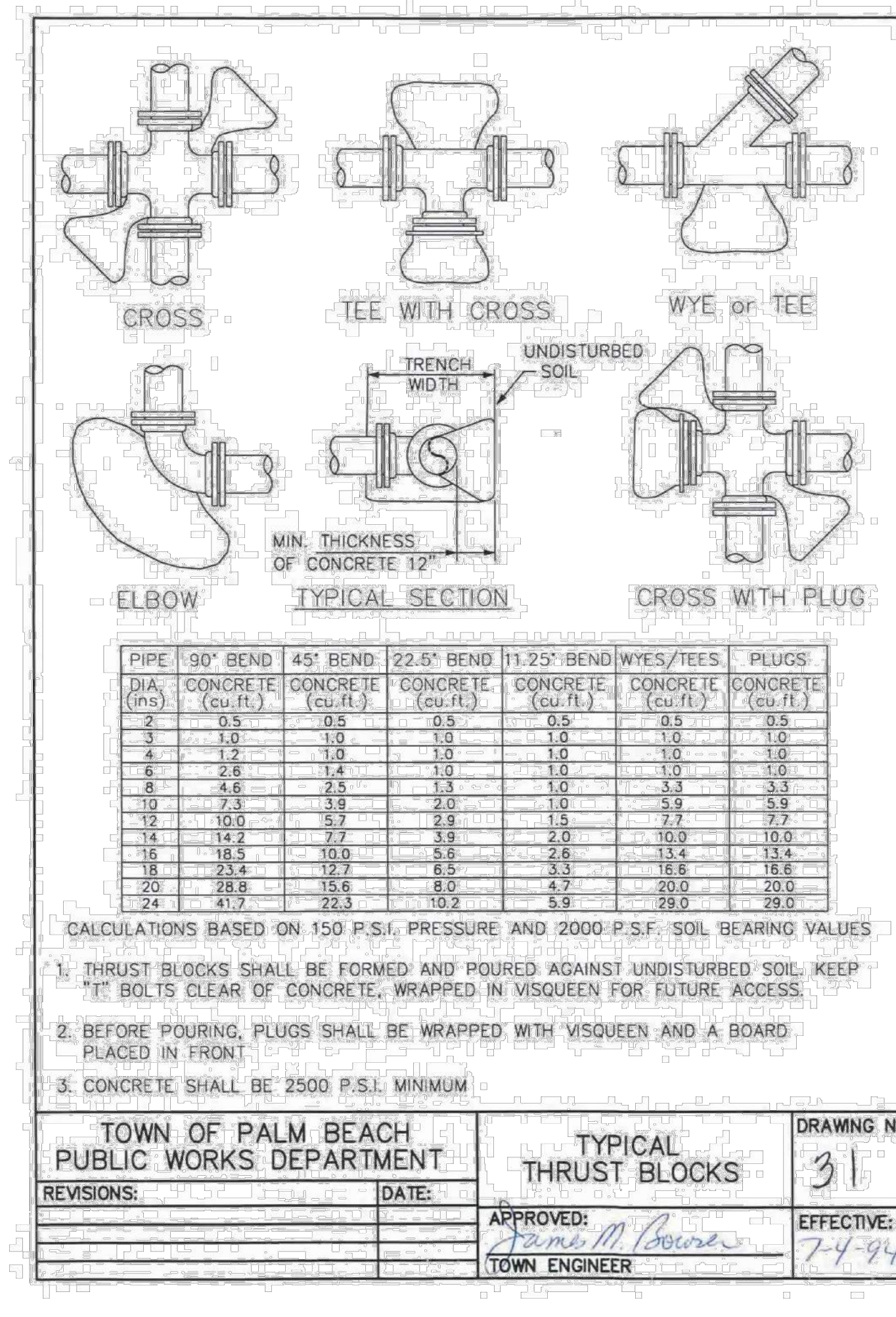
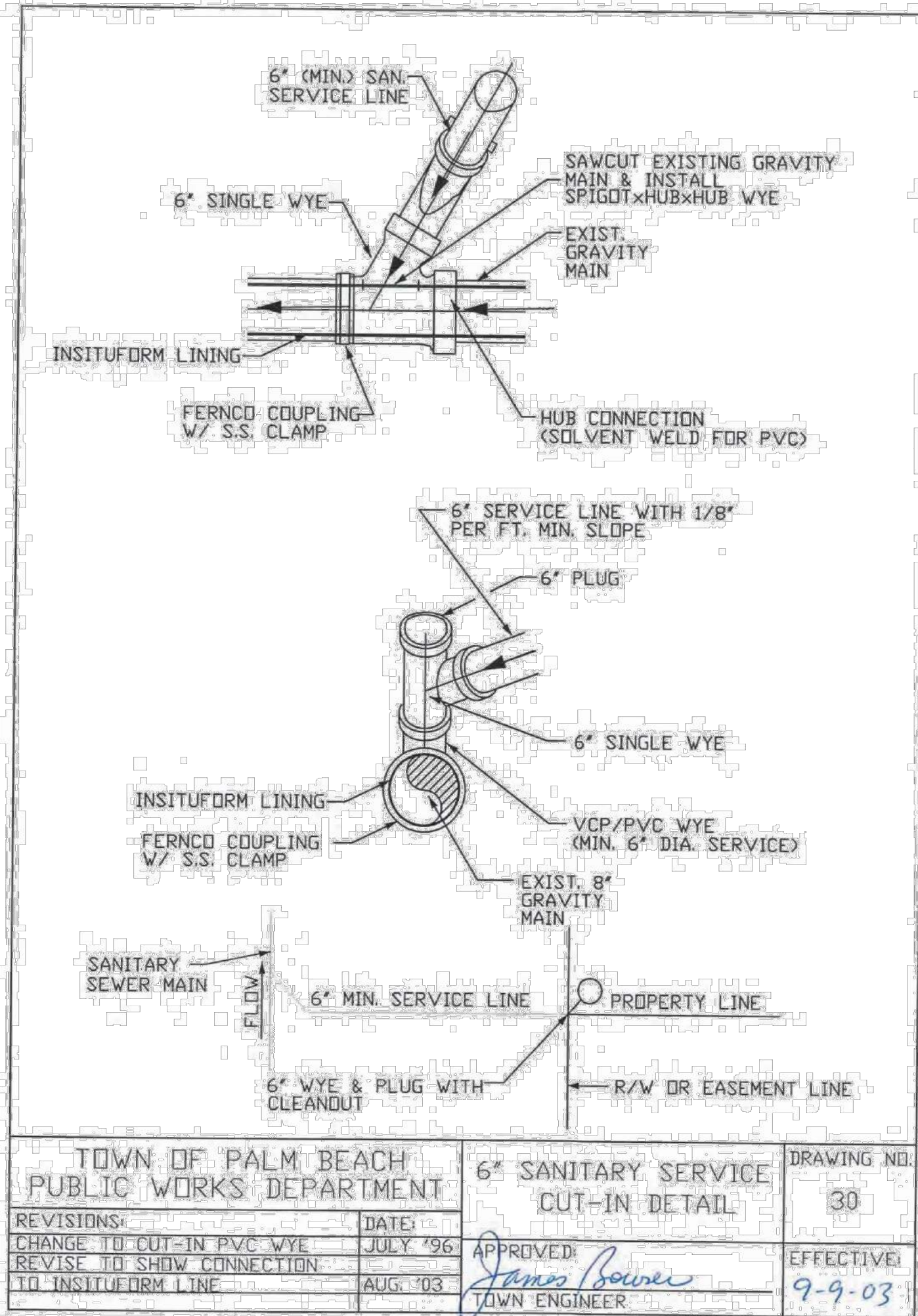
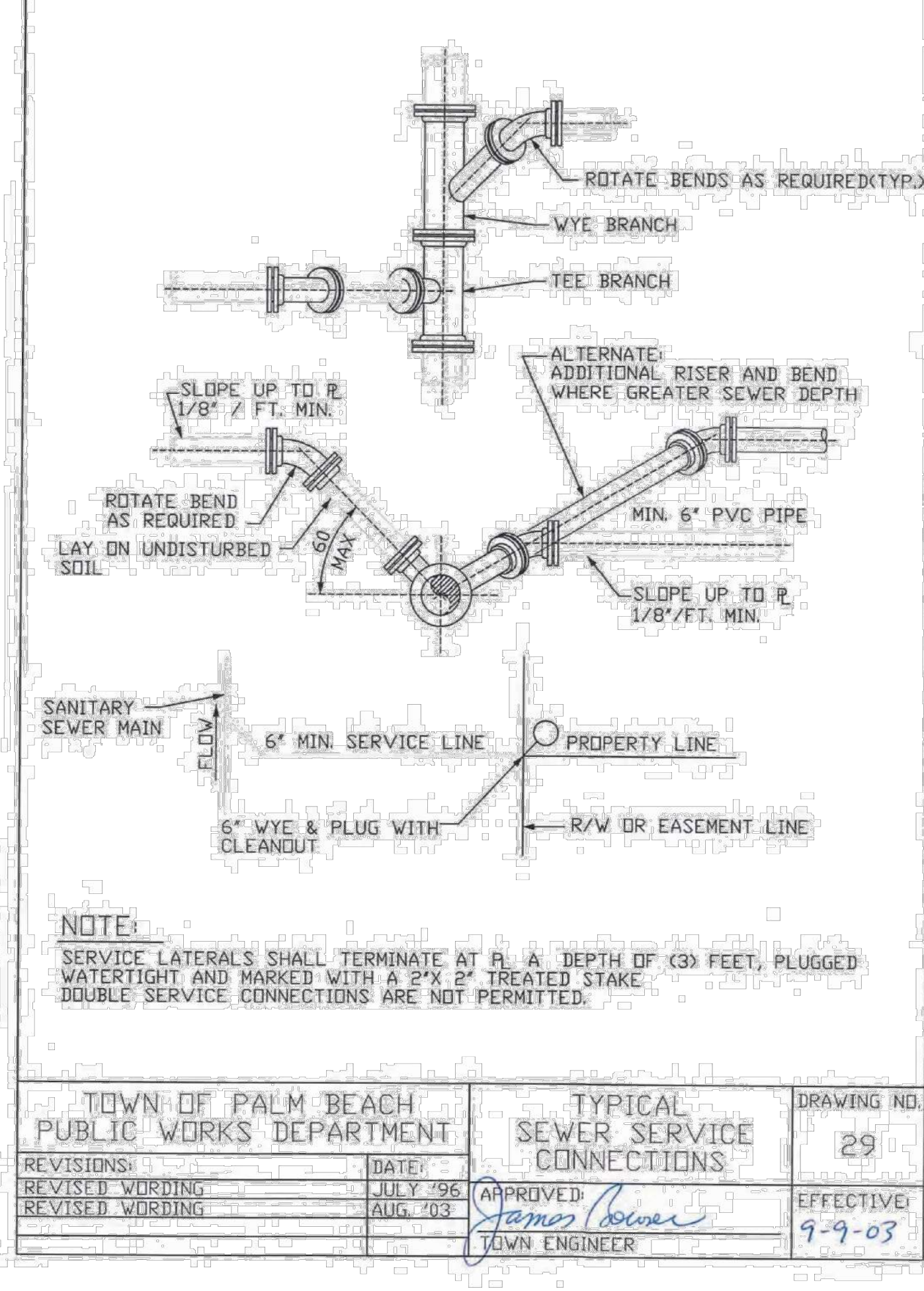
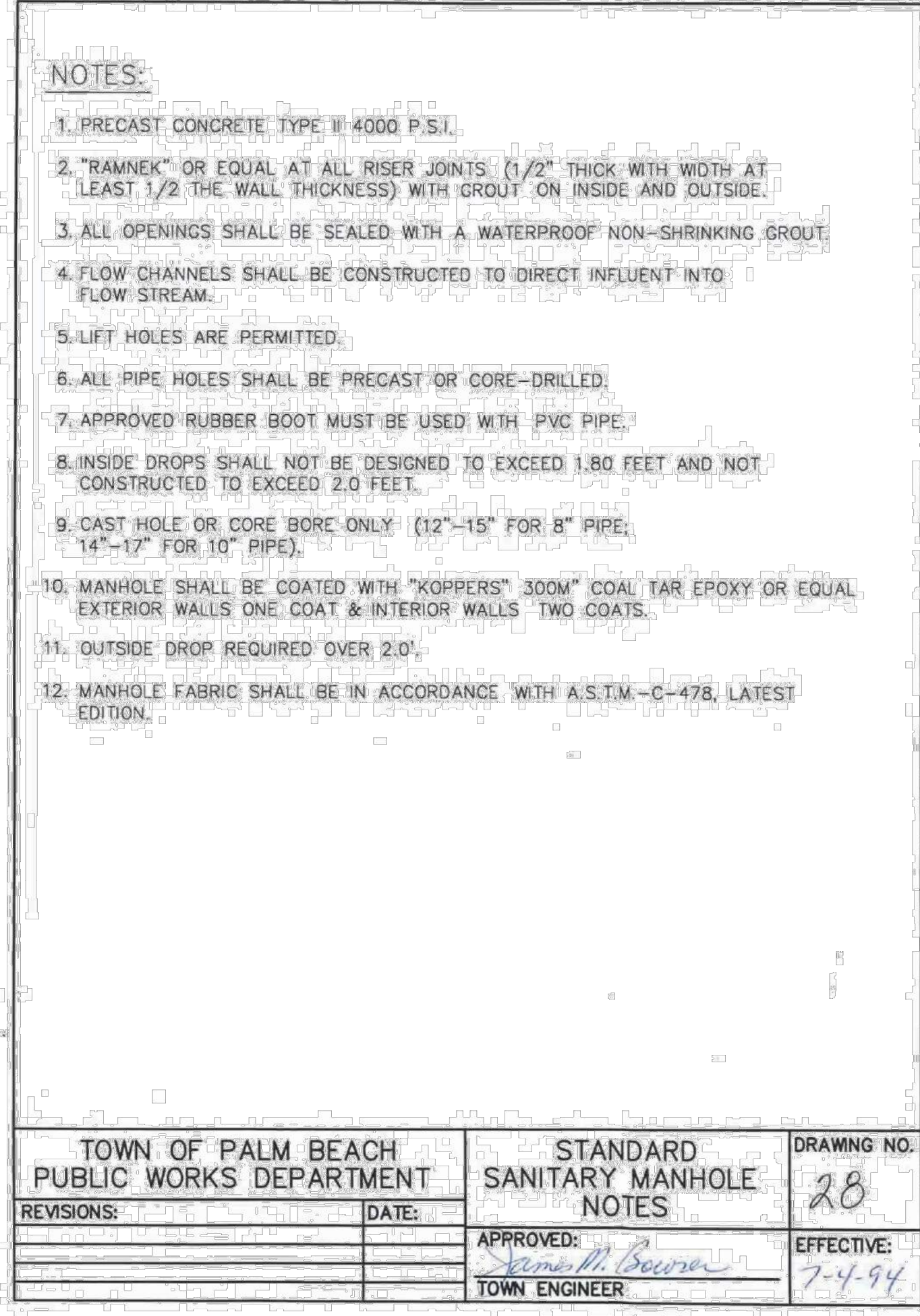
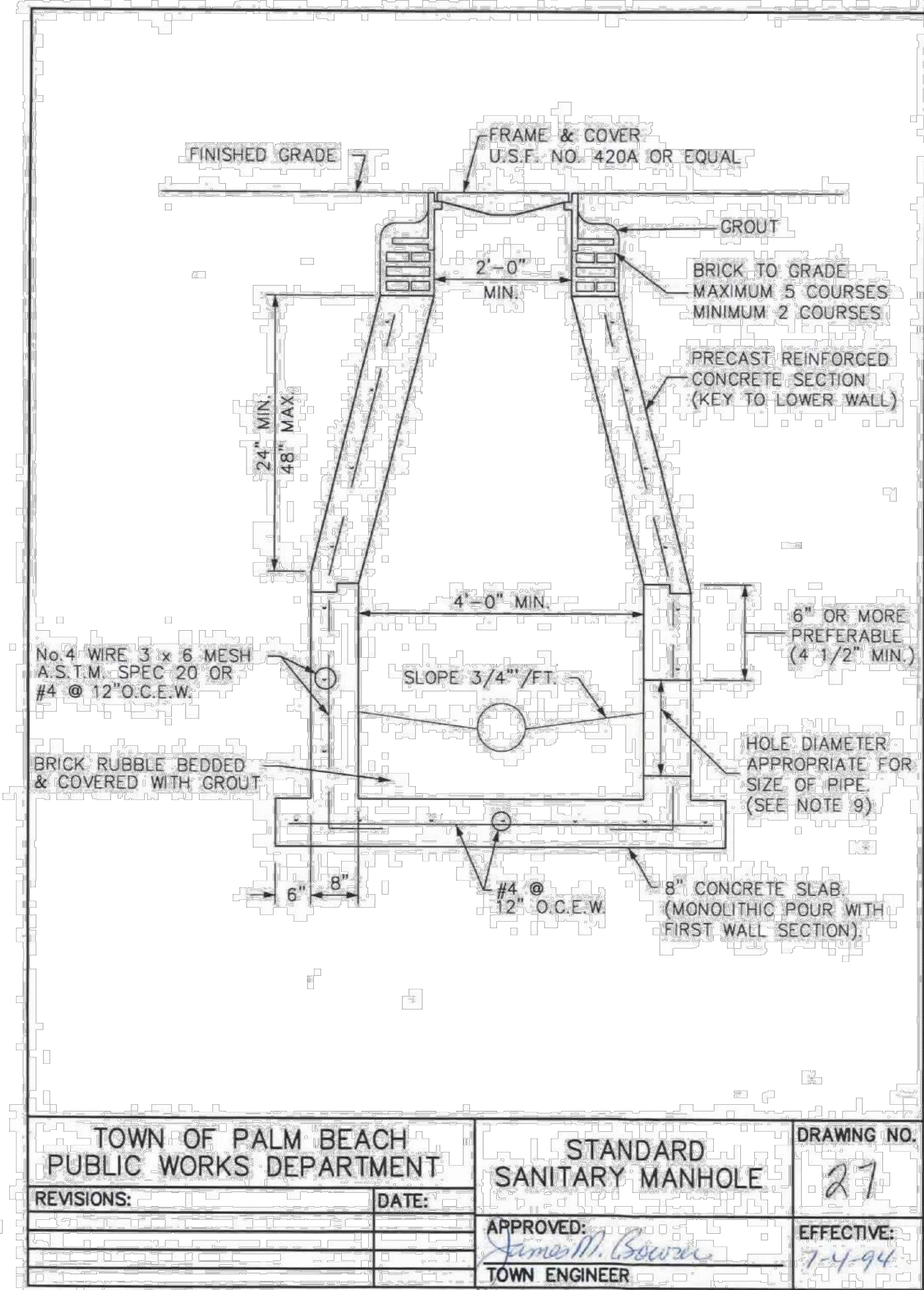
CALL 2 WORKING DAYS
BEFORE YOU DIG

IT'S THE LAW!
DIAL 811

Know what's below.
Call before you dig.

SUNSHINE STATE ONE CALL OF FLORIDA, INC.

Plotted By: McLoughlin, Kyle - Sheet Set: SOCIETY OF THE FOUR ARTS CAMPUS IMPROVEMENTS - LAYOUT: C3.10 UTILITY DETAILS - December 19, 2024 07:24:18pm - K:\BCD-Civil\24350000 - Society of the Four Arts CADD\PlanSheets\C4.11 UTILITY DETAILS.dwg
This document, together with the concepts and designs presented herein, as an instrument of service, is intended only for the specific purpose and client for which it was prepared. Reuse of and improper reliance on this document without written authorization and adaptation by Kimley-Horn and Associates, Inc. shall be without liability to Kimley-Horn and Associates, Inc.



PIPE DIA. (ins)	90° BEND CONCRETE (cu.ft.)	45° BEND CONCRETE (cu.ft.)	22.5° BEND CONCRETE (cu.ft.)	11.25° BEND CONCRETE (cu.ft.)	WYES/TEES CONCRETE (cu.ft.)	PLUGS CONCRETE (cu.ft.)
2	0.5	0.5	0.5	0.5	0.5	0.5
3	1.0	1.0	1.0	1.0	1.0	1.0
4	1.2	1.0	1.0	1.0	1.0	1.0
6	2.6	1.4	1.0	1.0	1.0	1.0
8	4.6	2.5	1.3	1.0	3.3	3.3
10	7.3	3.9	2.0	1.0	5.9	5.9
12	10.0	5.7	2.9	1.5	7.7	7.7
14	14.2	7.7	3.9	2.0	10.0	10.0
16	18.5	10.0	5.6	2.6	13.4	13.4
18	23.4	12.7	6.9	3.3	16.6	16.6
20	28.9	15.6	8.0	4.7	20.0	20.0
24	41.7	22.3	10.2	5.9	29.0	29.0

CALCULATIONS BASED ON 150 P.S.I. PRESSURE AND 2000 P.S.F. SOIL BEARING VALUES

1. THRUST BLOCKS SHALL BE FORMED AND POURED AGAINST UNDISTURBED SOIL. KEEP BOLTS CLEAR OF CONCRETE, WRAPPED IN VISQUEEN FOR FUTURE ACCESS.
2. BEFORE POURING, PLUGS SHALL BE WRAPPED WITH VISQUEEN AND A BOARD PLACED IN FRONT.
3. CONCRETE SHALL BE 2500 P.S.I. MINIMUM.

120 Broadway
20th Floor
New York, NY 10271
212 777 7800
beyerblinderbelle.com

**BEYER
BLINDER
BELLE**

285 Banyan Blvd
West Palm Beach, Florida 33401
561 684 6844 • Fax 561 684 5594
spinaorourke.com
FL Lic # A42602369

Kimley»Horn

1615 S. CONGRESS AVE. SUITE 200, DELRAY BEACH, FL 33445
PHONE: 561-330-2345 FAX: 561-863-8175
WWW.KIMLEY-HORN.COM CA REGISTRY NO. 696

Architecture • Interior Design
Keith M. Spina #A013419

THE SOCIETY OF THE FOUR ARTS

100 Four Arts Plaza, Palm Beach, FL 33480

THESE DRAWINGS ARE FOR THE EXCLUSIVE USE OF SPINA OROURKE + PARTNERS, INC. AND MAY NOT BE DUPLICATED, REPRODUCED OR USED IN ANY MANNER WITHOUT THE EXPRESS WRITTEN CONSENT OF SPINA OROURKE + PARTNERS, INC. ALL RIGHTS RESERVED.

LICENSED PROFESSIONAL
JOSHUA D. HORNING

FLORIDA LICENSE NUMBER
67505

DATE: OCT. 7, 2024

Project no: 245350000
Drawn by: MXE
Project Manager: JDH

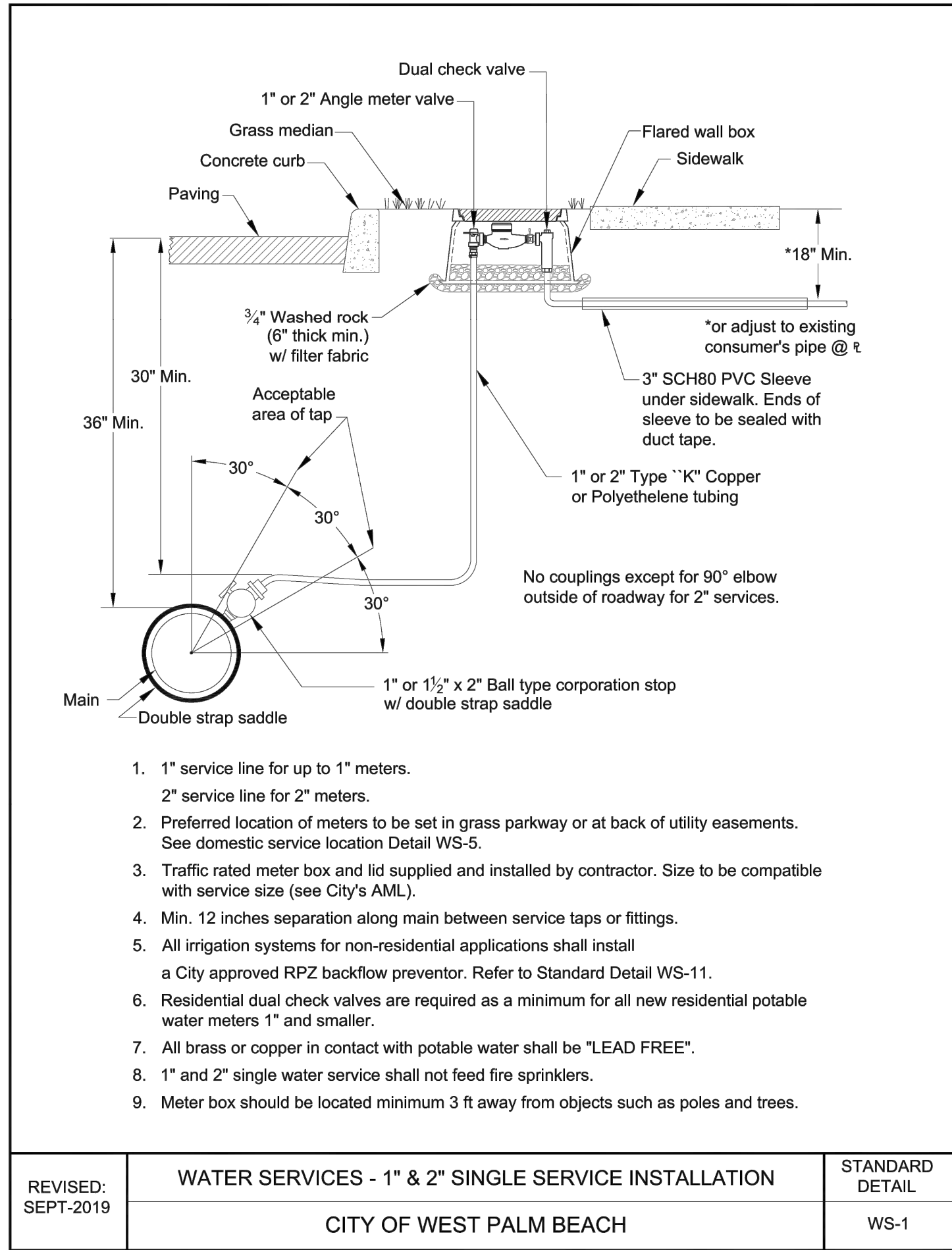
N
W E
S

C3.10

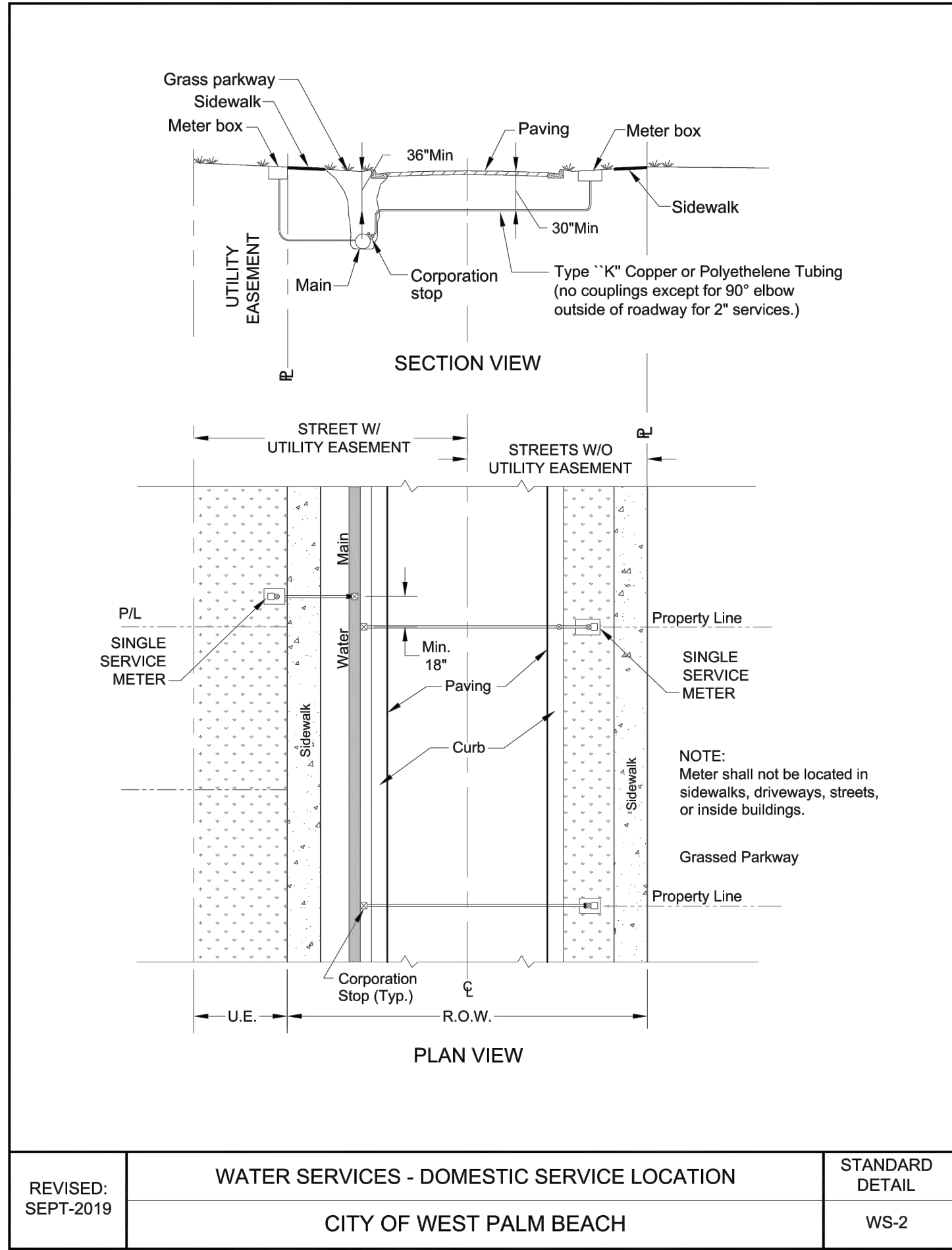
FINAL SUBMITTAL
WEST BLOCK

UTILITY DETAILS

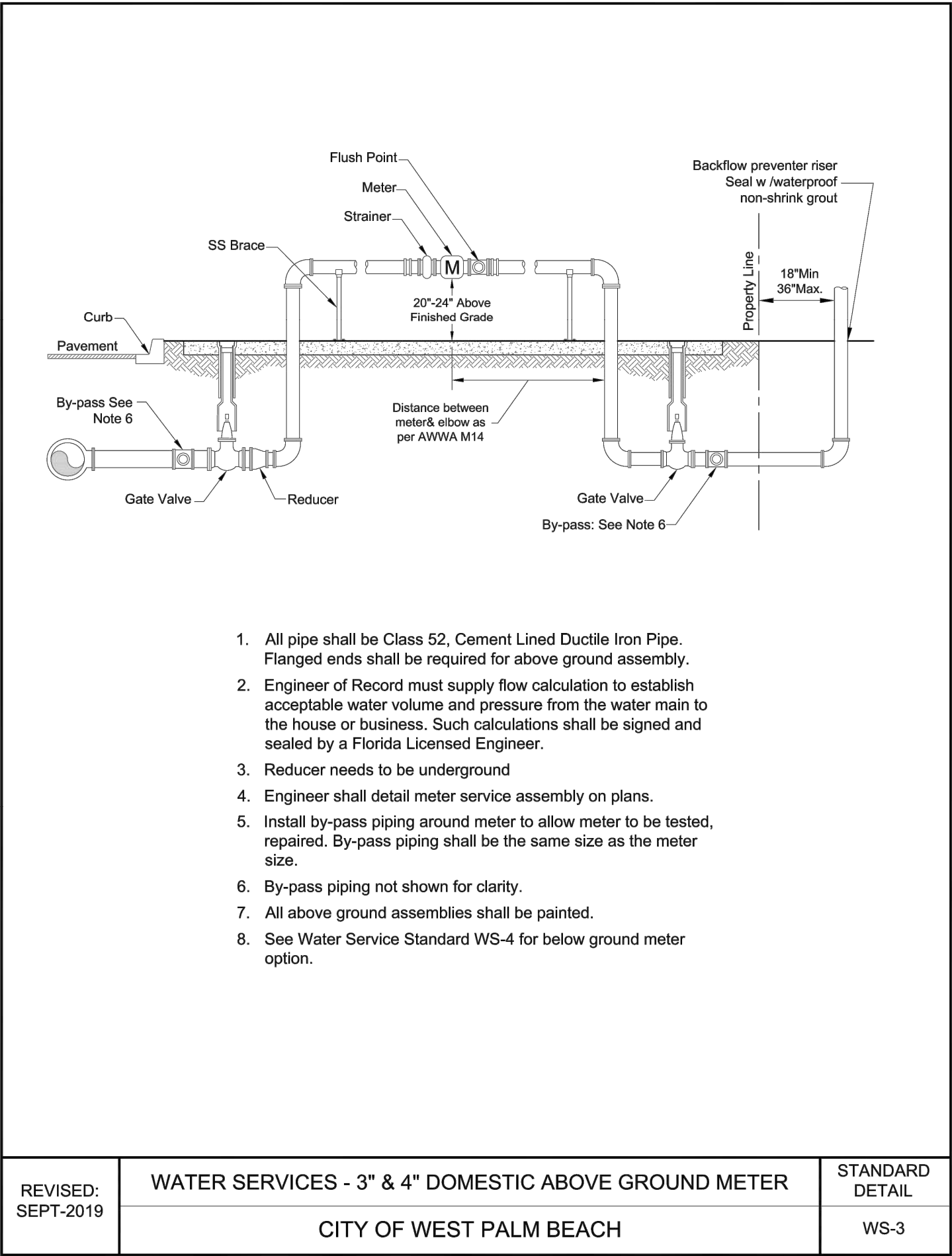
Plotted By:McLaughlin, Kyle Sheet Set:SOCIETY OF THE FOUR ARTS CAMPUS IMPROVEMENTS, LYOUC:CA312 UTILITY DETAILS December 19, 2024 07:24:26pm K:\BCD_Civil\245350000 - Society of the Four Arts\CADD\PlanSheets\C4.11 UTILITY DETAILS.dwg This document, together with the concepts and designs presented herein, is intended only for the specific purpose and client for which it was prepared. Reuse of and improper reliance on this document without written authorization and adaptation by Kimley-Horn and Associates, Inc. shall be without liability to Kimley-Horn and Associates, Inc.



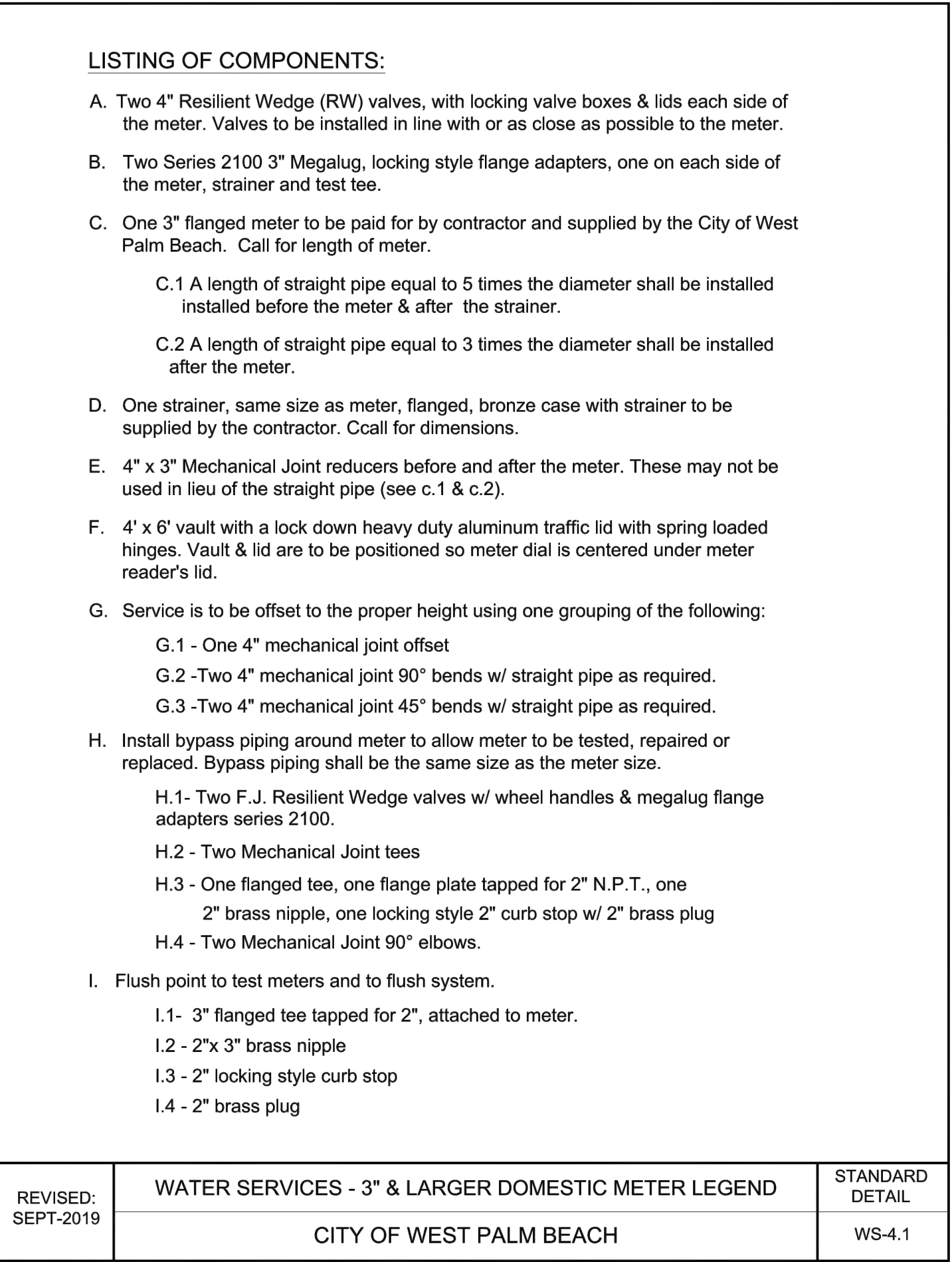
REVISED: SEPT-2019	WATER SERVICES - 1" & 2" SINGLE SERVICE INSTALLATION	STANDARD DETAIL
	CITY OF WEST PALM BEACH	WS-1



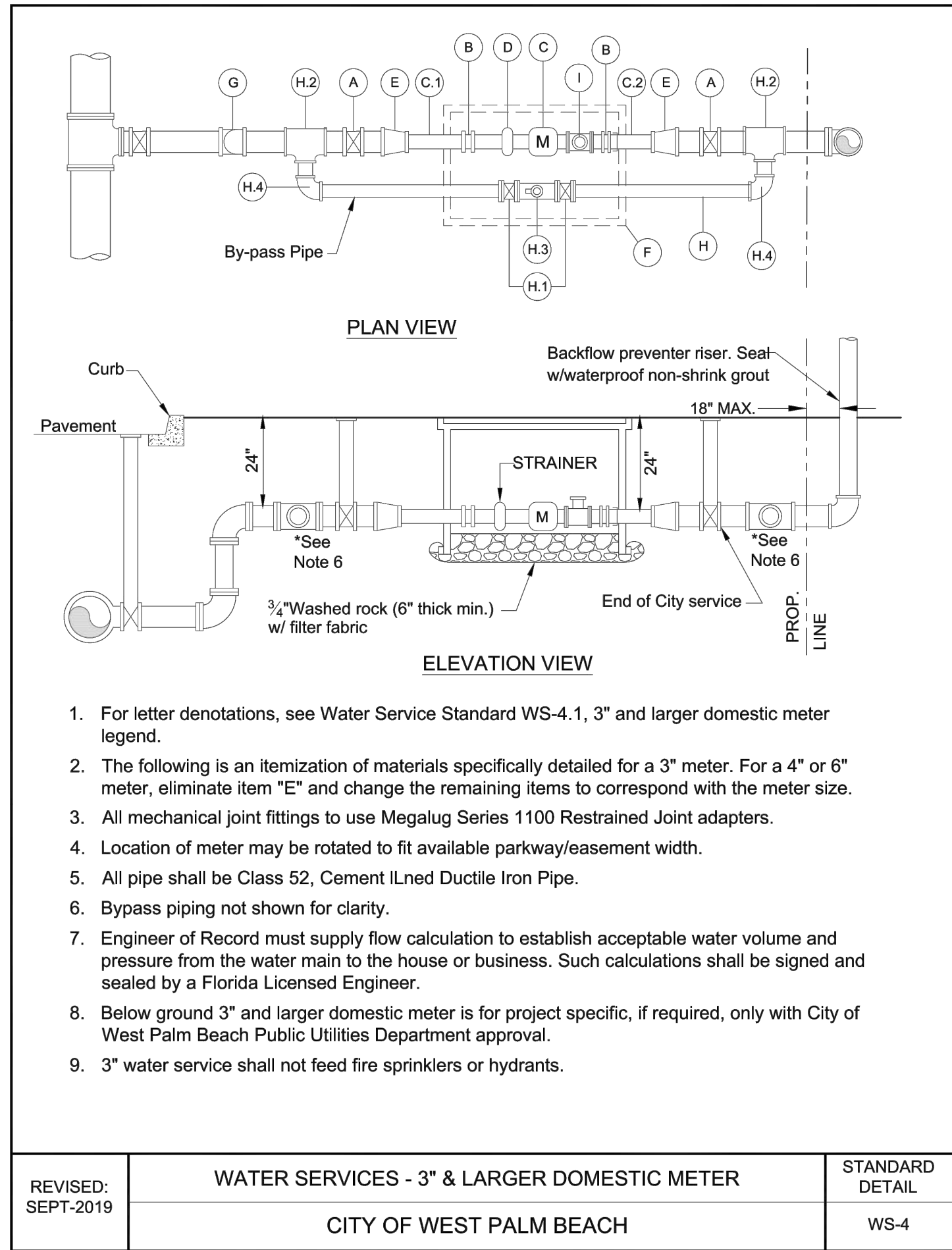
REVISED: SEPT-2019	WATER SERVICES - DOMESTIC SERVICE LOCATION	STANDARD DETAIL
	CITY OF WEST PALM BEACH	WS-2



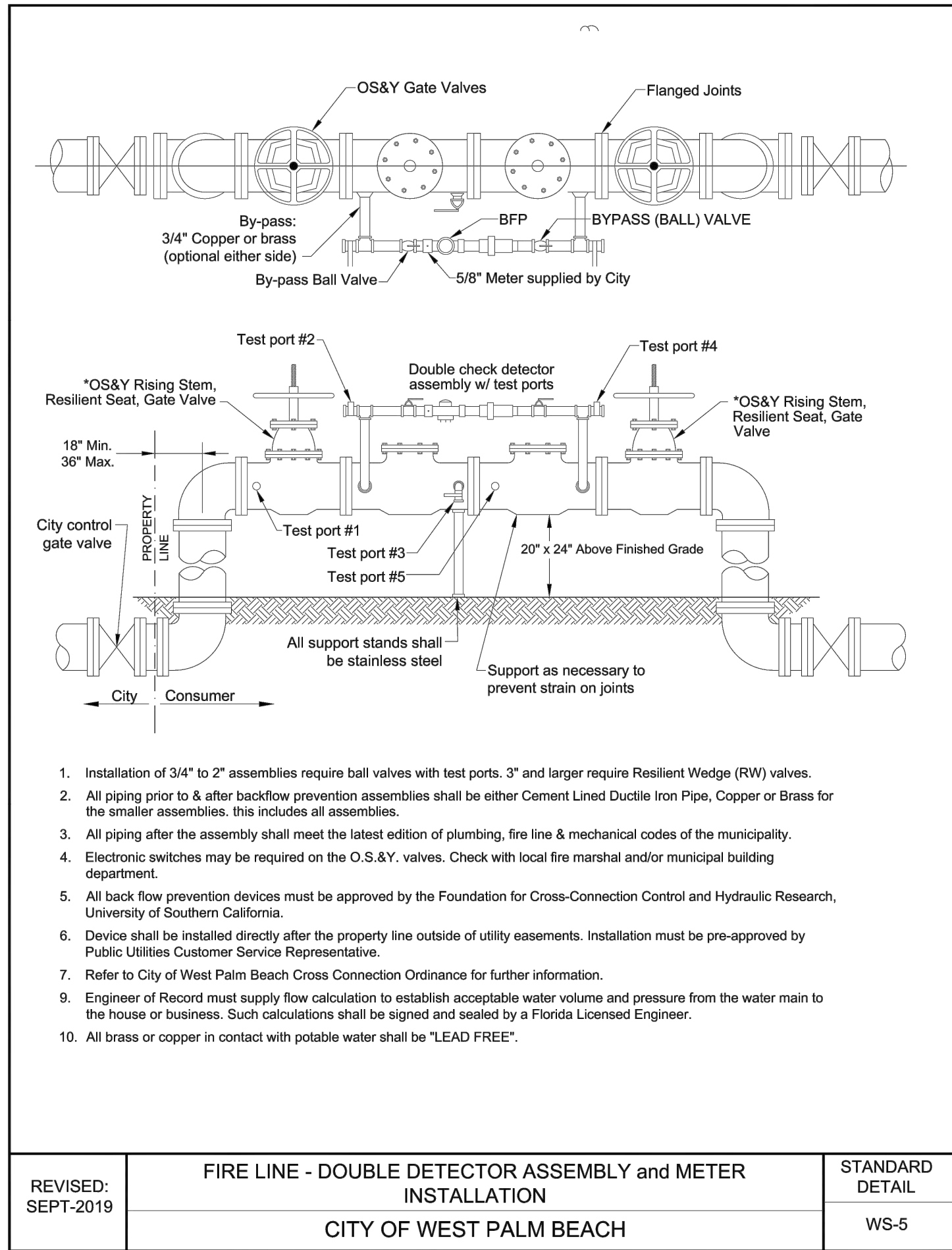
REVISED: SEPT-2019	WATER SERVICES - 3" & 4" DOMESTIC ABOVE GROUND METER	STANDARD DETAIL
	CITY OF WEST PALM BEACH	WS-3



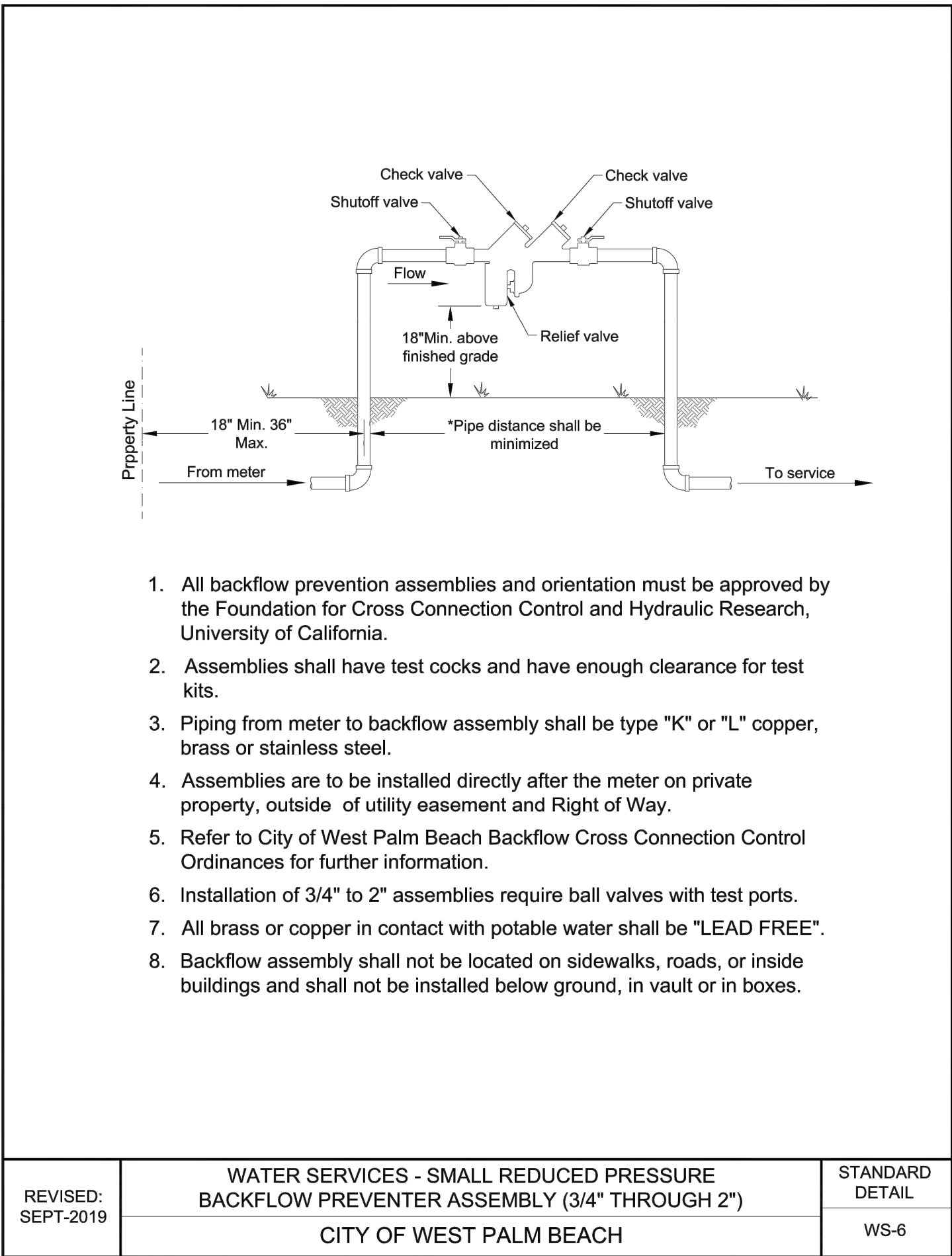
REVISED: SEPT-2019	WATER SERVICES - 3" & LARGER DOMESTIC METER LEGEND	STANDARD DETAIL
	CITY OF WEST PALM BEACH	WS-4.1



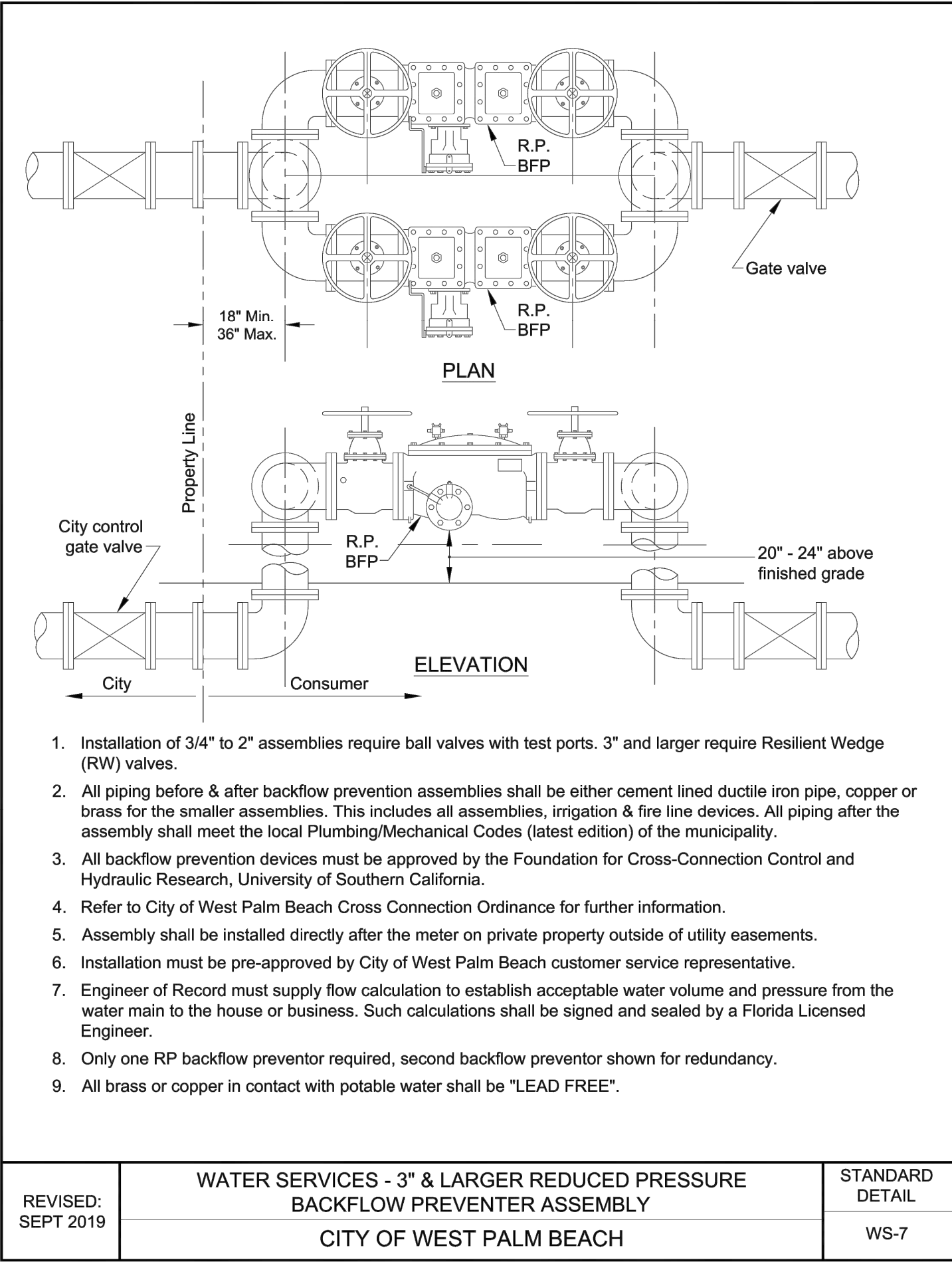
REVISED: SEPT-2019	WATER SERVICES - 3" & LARGER DOMESTIC METER	STANDARD DETAIL
	CITY OF WEST PALM BEACH	WS-4



REVISED: SEPT-2019	FIRE LINE - DOUBLE DETECTOR ASSEMBLY and METER INSTALLATION	STANDARD DETAIL
	CITY OF WEST PALM BEACH	WS-5



REVISED: SEPT-2019	WATER SERVICES - SMALL REDUCED PRESSURE BACKFLOW PREVENTER ASSEMBLY (3/4" THROUGH 2")	STANDARD DETAIL
	CITY OF WEST PALM BEACH	WS-6



REVISED: SEPT 2019	WATER SERVICES - 3" & LARGER REDUCED PRESSURE BACKFLOW PREVENTER ASSEMBLY	STANDARD DETAIL
	CITY OF WEST PALM BEACH	WS-7

UTILITY DETAILS

THE SOCIETY OF THE FOUR ARTS

100 Four Arts Plaza, Palm Beach, FL 33480

THESE DRAWINGS ARE FOR THE EXCLUSIVE USE OF SPINA OROURKE + PARTNERS, INC. AND MAY NOT BE DUPLICATED, REPRODUCED OR USED IN ANY MANNER WITHOUT THE EXPRESS WRITTEN CONSENT OF SPINA OROURKE + PARTNERS, INC. ALL RIGHTS RESERVED.

LICENSED PROFESSIONAL

JOSHUA D. HORNING

FLORIDA LICENSE NUMBER 67505

DATE: OCT. 7, 2024

Project no: 245350000

Drawn by: MXE

Project Manager: JDH

N

W

E

S

C3.12

FINAL SUBMITTAL

WEST BLOCK

285 Banyan Blvd
West Palm Beach Florida 33401
561.684.6844 • Fax 561.684.5594
spinaorourke.com
FL Lic # AA2602399

BEYER BLINDER BELLE

1615 S. CONGRESS AVE. SUITE 200, DELRAY BEACH, FL 33445
PHONE: 561-330-2345 FAX: 561-863-8175
WWW.KIMLEY-HORN.COM CA REGISTRY NO. 696

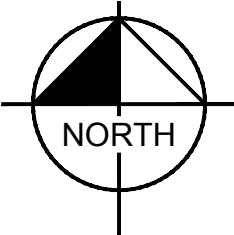
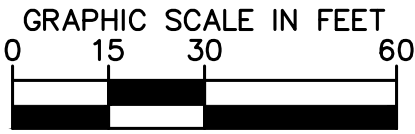
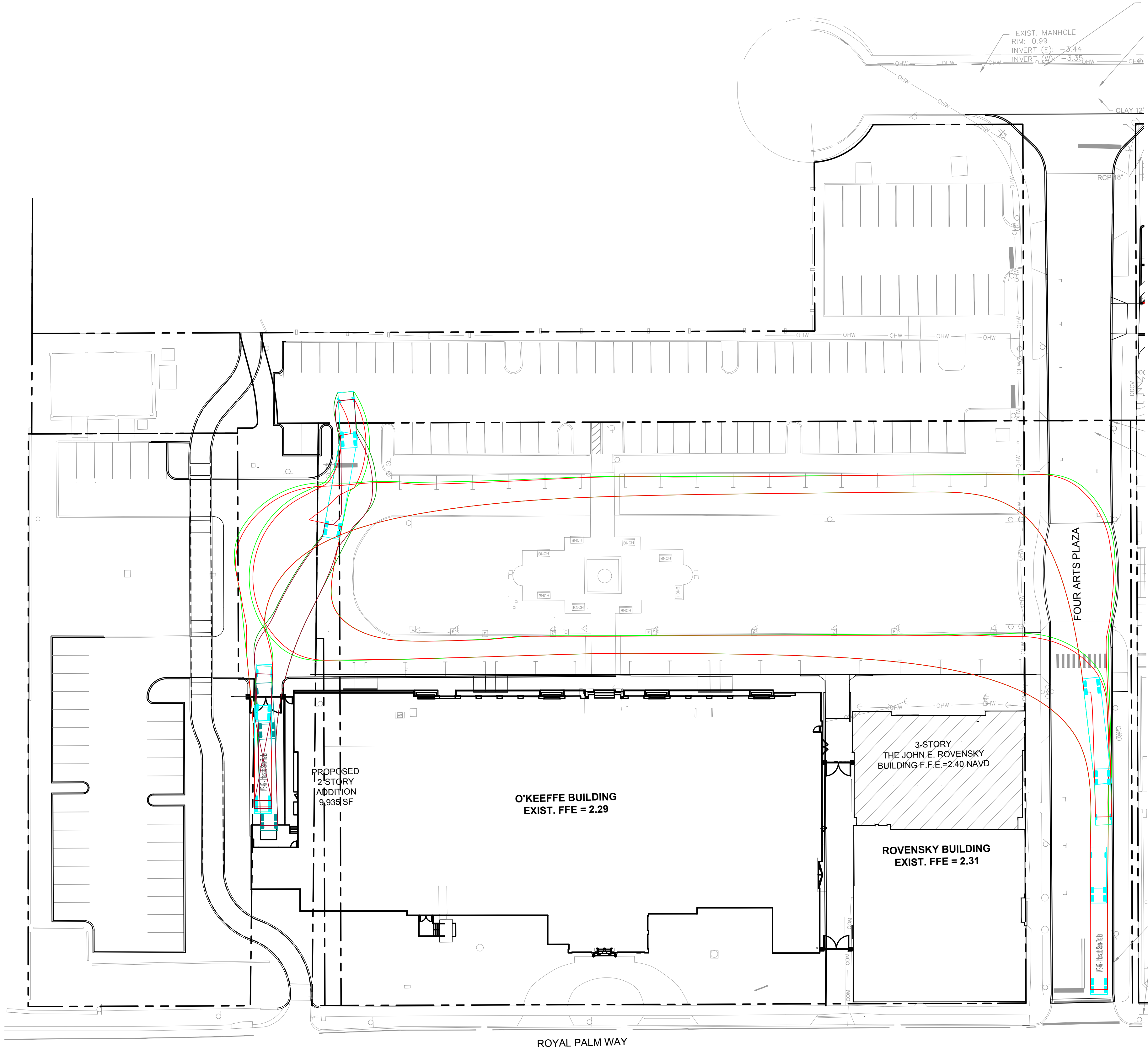
Kimley»Horn

Architecture • Interior Design

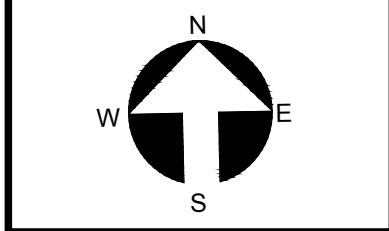
Keith M. Spina #AR13419

Plotted By: McLoughlin, Kyle - Sheet Set: SOCIETY OF THE FOUR ARTS CAMPUS IMPROVEMENTS - LAYOUT: MANEUVERABILITY PLAN - WB-67 - December 19, 2024 - 07:24:37pm - K:\NEED-Civil\245350000 - Society of the Four Arts\CADD\PlanSheets\C5.00 MANEUVERABILITY PLAN.dwg

This document, together with the concepts and designs presented herein, as an instrument of service, is intended only for the specific purpose and client for which it was prepared. Reuse of and improper reliance on this document without written authorization and adaptation by Kimley-Horn and Associates, Inc. shall be without liability to Kimley-Horn and Associates, Inc.



MANEUVERABILITY PLAN WB-67



THESE DRAWINGS ARE FOR THE EXCLUSIVE USE OF SPINA OROURKE + PARTNERS, INC. AND MAY NOT BE DUPLICATED, REPRODUCED OR USED IN ANY MANNER WITHOUT THE EXPRESS WRITTEN CONSENT OF SPINA OROURKE + PARTNERS, INC. ALL RIGHTS RESERVED.

LICENSED PROFESSIONAL
JOSHUA D. HORNING

FLORIDA LICENSE NUMBER
67505

DATE:
OCT. 7, 2024

Project no: 245350000

Drawn by: MXE
Project Manager: JDH

The Society of the Four Arts

100 Four Arts Plaza, Palm Beach, FL 33480



285 Banyan Blvd
West Palm Beach Florida 33401
561.684.6844 • Fax 561.684.5594
spinaorourke.com
FL Lic # AA26002399

BEYER BLINDER BELLE

120 Broadway
20th Floor
New York, NY 10271
212 777 7800
beyerblinderbelle.com

Architecture • Interior Design
Keith M. Spina #AR13419

Kimley»Horn

1615 S. CONGRESS AVE. SUITE 200, DELRAY BEACH, FL 33445
PHONE: 561-330-2345 FAX: 561-853-8175
WWW.KIMLEY-HORN.COM CA REGISTRY NO. 696