

Second Submittal: Aug 26, 2024

Hearing Date:October 23, 2024

# 740 Hi Mount Rd

Residential

Palm Beach, FL

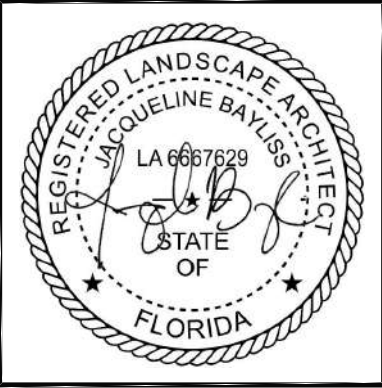
REVISIONS / SUBMISSIONS		
1	Town Comments	2024.8.26

--

JONES RESIDENCE  
740 Hi Mount Road, Palm Beach 33480

COVER SHEET

OWNER



FERNANDO WONG  
OUTDOOR LIVING DESIGN

DRAWN BY:	FW
CHECKED BY:	JB
DATE:	2024.08.26
SCALE:	

ARC -24-0082  
ZON -24-0005

COVER

## DRAWING INDEX

Sheet No.	Sheet Title	Scope of Work
COVER SHEET	COVER SHEET	-REMODEL OF NORTH LAKE TRAIL BUILDING
S-100	SURVEY PLAN	-ADDITIONAL PERGOLA
EX-100	EXISTING PHOTOS	-ADDITIONAL WINDOW ON EAST GARAGE WALL
EX-101	EXISTING PHOTOS	-NEW LANDSCAPE
EX-102	EXISTING PHOTOS	-MODIFICATIONS TO HARDSCAPE
EX-103	EXISTING PHOTO KEY PLAN	-NEW INTERIOR GARDEN WALL
CSP-100	CONSTRUCTION SCREENING PLAN	
DM-100	LANDSCAPE DEMOLITION PLAN	
DM-101	TREE DISPOSITION TABLE	
R-100	RENDERED ELEVATIONS	
H-100	HARDSCAPE PLAN	
H-101	HARDSCAPE SCHEDULE	
L-100	LANDSCAPE PLAN	
L-101	LANDSCAPE ENLARGEMENT	
L-102	PLANTING SCHEDULE	
L-103	GENERAL NOTES AND DETAILS	
LL-100	LIGHTING PLAN	
LL-101	LIGHTING SCHEDULE	

## DESIGN TEAM

**ARCHITECT:**  
SCHAFER BUCCELATO ARCHITECTS  
19 UNION SQUARE WEST, 4TH FLOOR  
NEW YORK, NY 1003  
212.965.1355

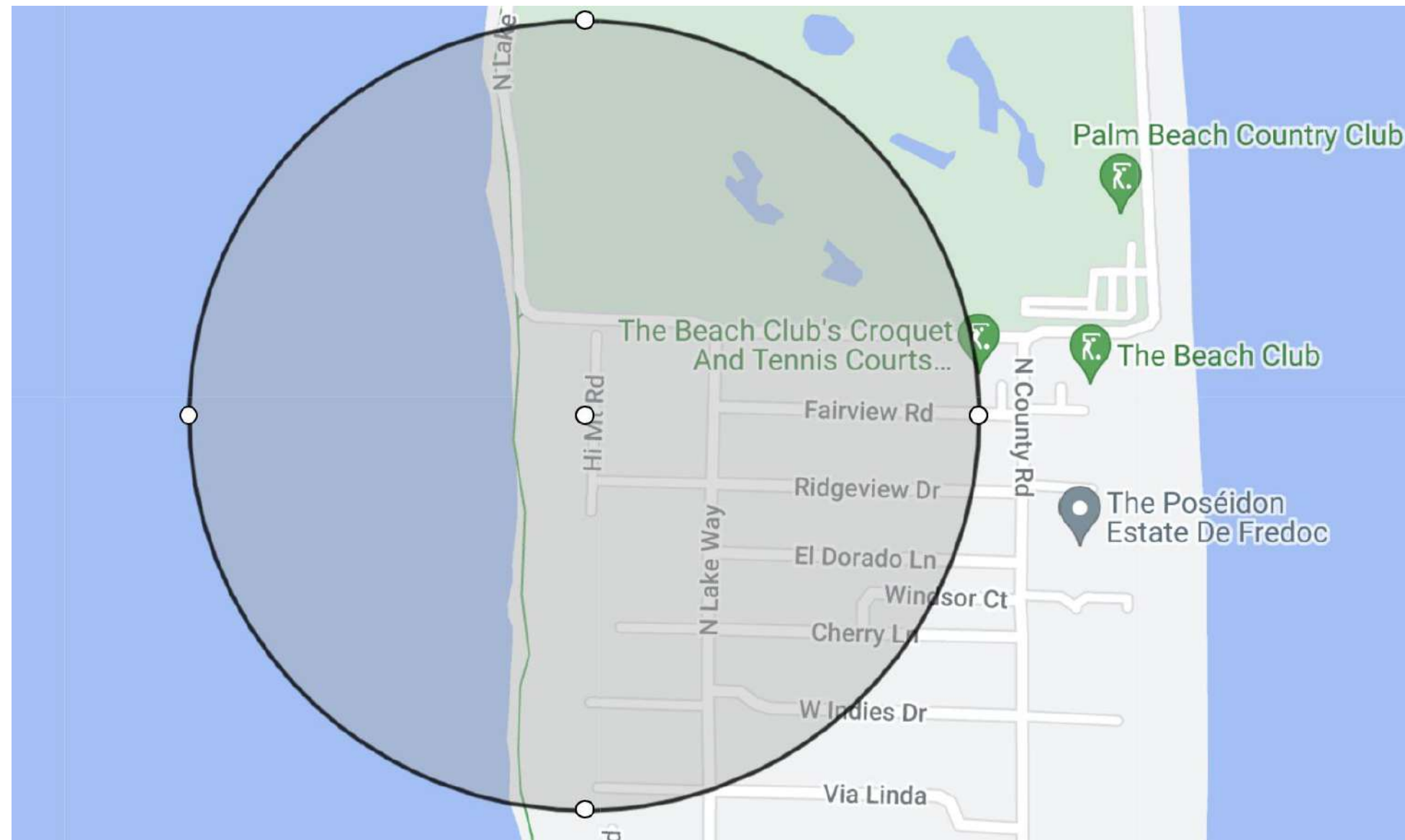
**LANDSCAPE ARCHITECT:**  
FERNANDO WOND OUTDOOR LIVING DESIGN  
3614 S DIXIE HWY #210  
WEST PALM BEACH, FL. 33405  
561.515.0213

**GENERAL CONTRACTOR**  
WITTMAN BUILDING CORPORATION  
2 HARVARD CIR #300  
WEST PALM BEACH, FL 33409  
561.366.8188

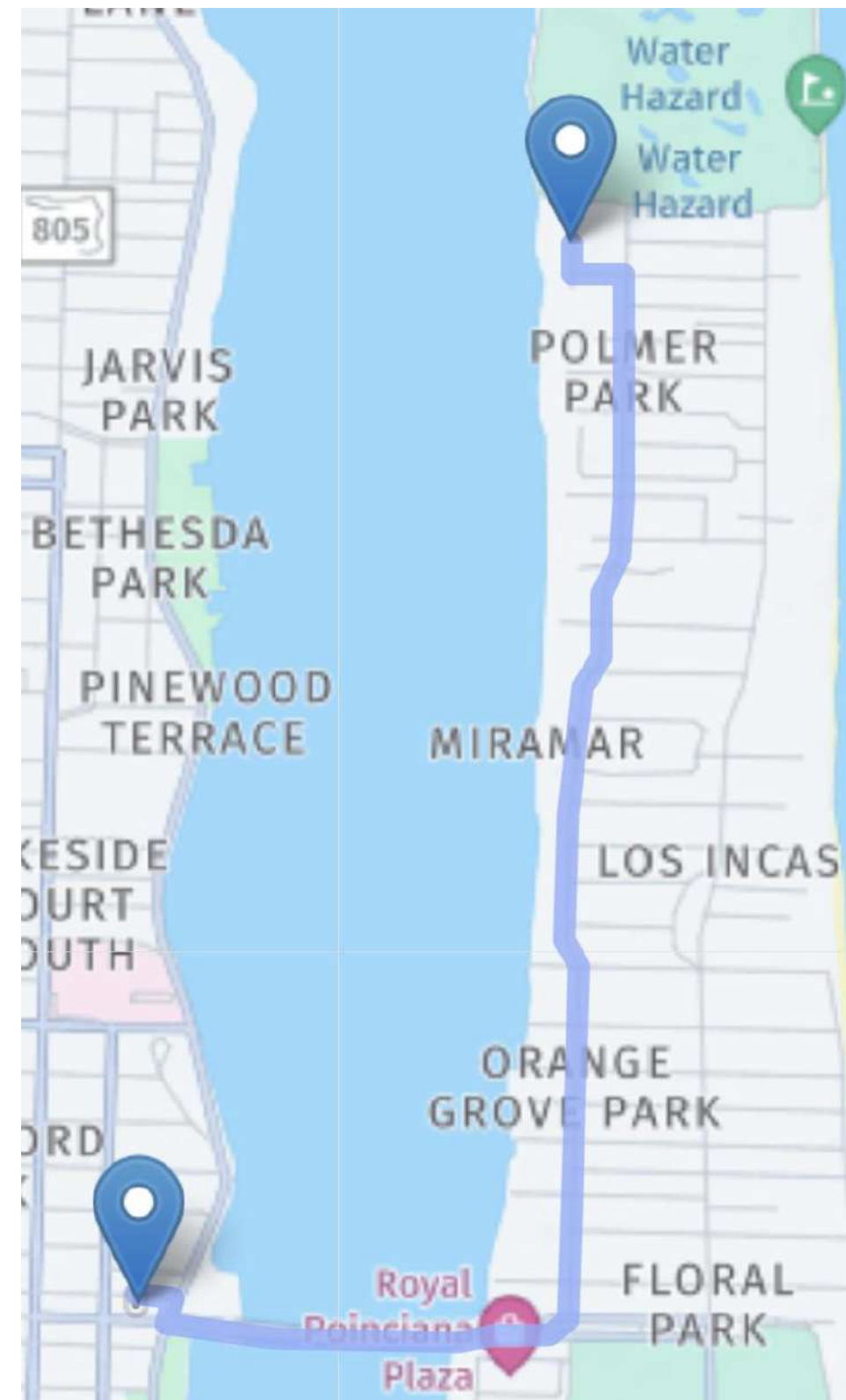
CONSTRUCTION SCHEDULE	
SITE PREPARATION	2 MONTHS
LANDSCAPE DEMO	2 MONTHS
EXTERIOR STRUCTURE	2 MONTHS
FOUNTAIN	3 MONTHS
LANDSCAPE	3 MONTHS
EXTERIOR FINISHES	4 MONTHS
FINAL INSPECTIONS	2 MONTHS

## SITE CONTEXT

Quater Mile Radius Map



Truck Logistics Plan



**TRUCK LOGISTICS**  
1.MAX. TRUCK LENGTH 35'

**TOTAL ESTIMATED DELIVERIES**  
GENERATED=1,900

**INCLUDING BUT NOT LIMITED TO DUMP TRUCKS, DEMOLITION, FILL, STEEL, CONCRETE BLOCK, WINDOWS/DOORS, TRUSSES, ROOF SHEATHING, A/C UNITS, CABINETS, FLOOR TILE, LANDSCAPE, ETC**

NOT FOR CONSTRUCTION



REVISIONS / SUBMISSIONS		
1	Town Comments	2024.8.26
△		
△		
△		
△		
△		
△		
△		
△		
△		
△		
△		

--

JONES RESIDENCE 740 Hi Mount Road, Palm Beach 33480	SURVEY PLAN
--	-------------

OWNER
-------



FERNANDO WONG OUTDOOR LIVING DESIGN
--

DRAWN BY:	FW
CHECKED BY:	JB
DATE:	2024.08.26
SCALE:	

ARC -24-0082 ZON -24-0005
------------------------------

NOT FOR CONSTRUCTION





1 Hi Mount Rd Front Entrance facing West



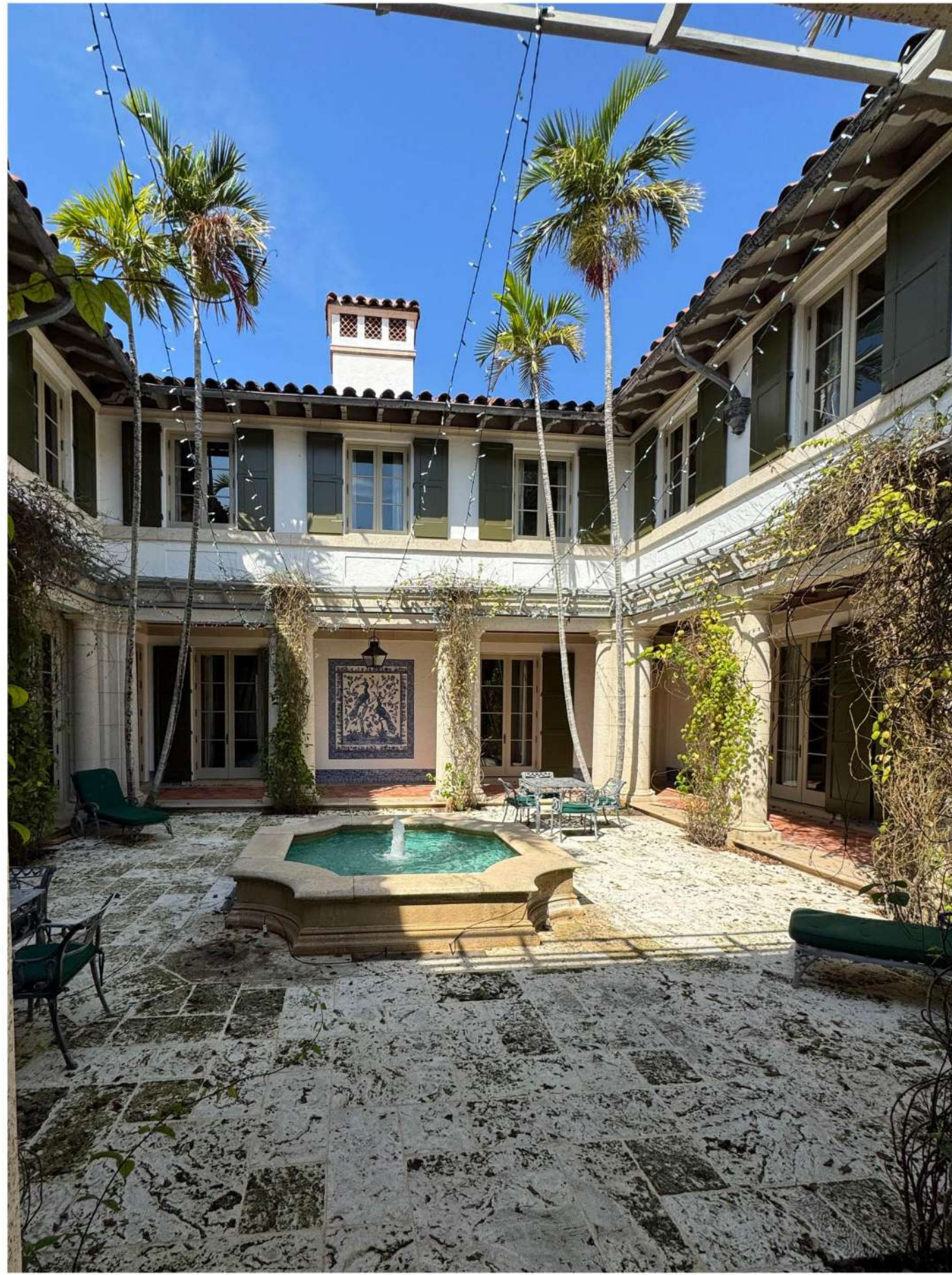
2 Service parking facing garage West



3 Front gravel drive way facing south towards service parking



4 Hi Mount Rd facing west into service entrance



5 Front entry interior courtyard facing West

EX 100 EXISTING CONDITIONS

0' 2' 4' 8' 16' 24'  
SCALE: 3/32" = 1'-0"

NOT FOR CONSTRUCTION

REVISIONS / SUBMISSIONS		
1	Town Comments	2024.8.26

JONES RESIDENCE 740 Hi Mount Road, Palm Beach 33480	
EXISTING CONDITIONS	

OWNER
-------



FERNANDO WONG OUTDOOR LIVING DESIGN
--

DRAWN BY:	FW
CHECKED BY:	JB
DATE:	2024.08.26
SCALE:	

ARC -24-0082 ZON -24-0005
------------------------------

EX-100
--------





6 Backyard southern terrace steps facing Northwest



7 Backyard pool terrace facing North-Northwest



8 Backyard steps facing west



9 Westernmost part of backyard facing North



10 Backyard southern terrace steps facing east towards garage

NOT FOR CONSTRUCTION

REVISIONS / SUBMISSIONS		
1	Town Comments	2024.8.26

**JONES RESIDENCE**  
740 Hi Mount Road, Palm Beach 33480

**EXISTING CONDITIONS**

OWNER



**FERNANDO WONG**  
OUTDOOR LIVING DESIGN

DRAWN BY:	FW
CHECKED BY:	JB
DATE:	2024.08.26
SCALE:	

ARC -24-0082  
ZON -24-0005





11 North side yard facing east



12 Lake trail facing southeast



13 South side yard facing East



14 South garage entrance terrace facing West



15 North side yard path facing East



16 North side yard path facing West

NOT FOR CONSTRUCTION

REVISIONS / SUBMISSIONS		
1	Town Comments	2024.8.26

JONES RESIDENCE 740 Hi Mount Road, Palm Beach 33480	
EXISTING CONDITIONS	

OWNER
-------



FERNANDO WONG OUTDOOR LIVING DESIGN
--

DRAWN BY:	FW
CHECKED BY:	JB
DATE:	2024.08.26
SCALE:	

ARC -24-0082 ZON -24-0005
------------------------------



[illegible]

**JONES RESIDENCE**  
740 Hi Mount Road, Palm Beach 33480

---

---

**EXISTING CONDITIONS KEY MAP**

OWNER

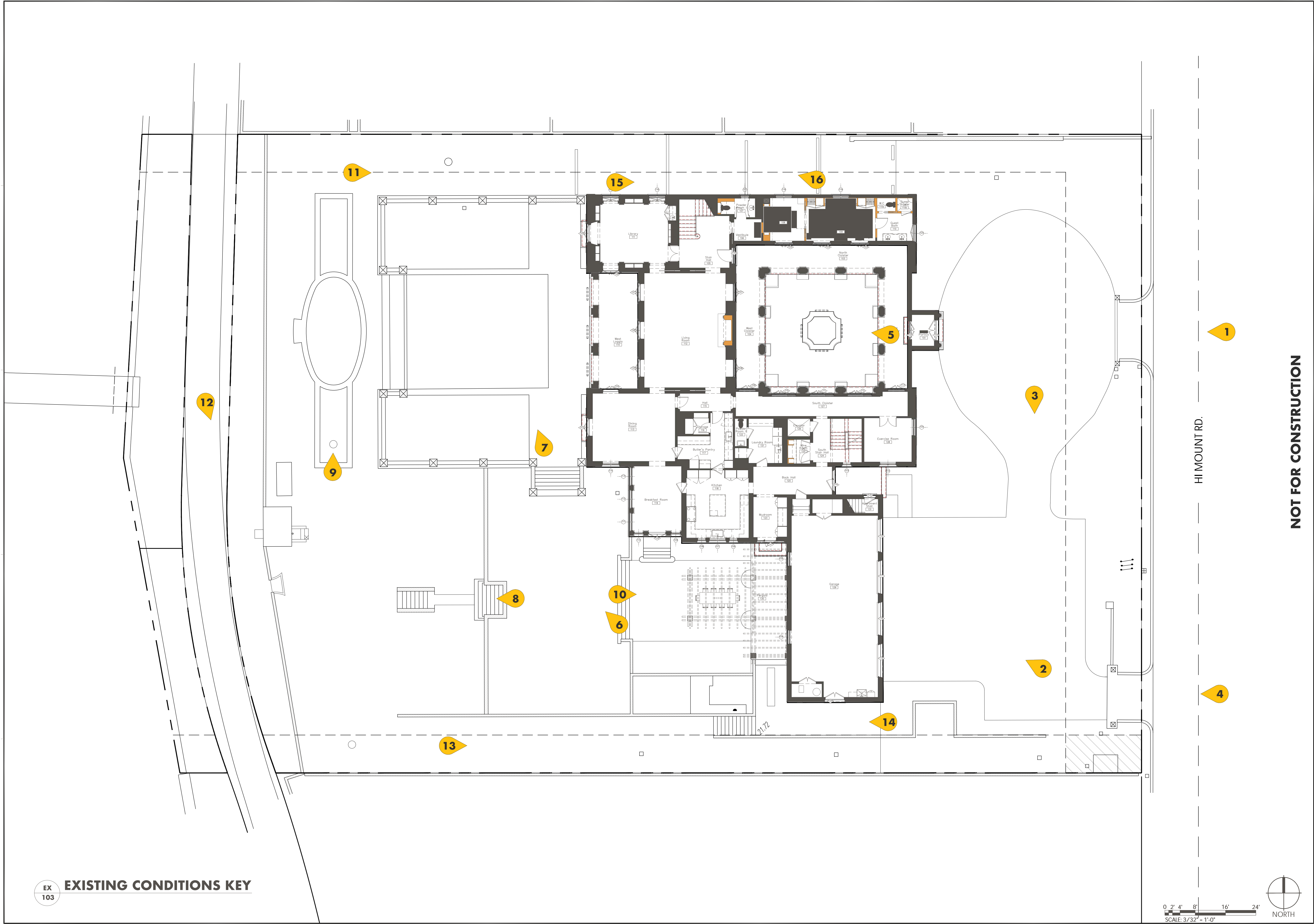


FERNANDO WONG  
OUTDOOR LIVING DESIGN

<b>DRAWN BY:</b>	FW
<b>CHECKED BY:</b>	JB
<b>DATE:</b>	2024.08.26
<b>SCALE:</b>	

ARC -24-0082  
ZON -24-0005

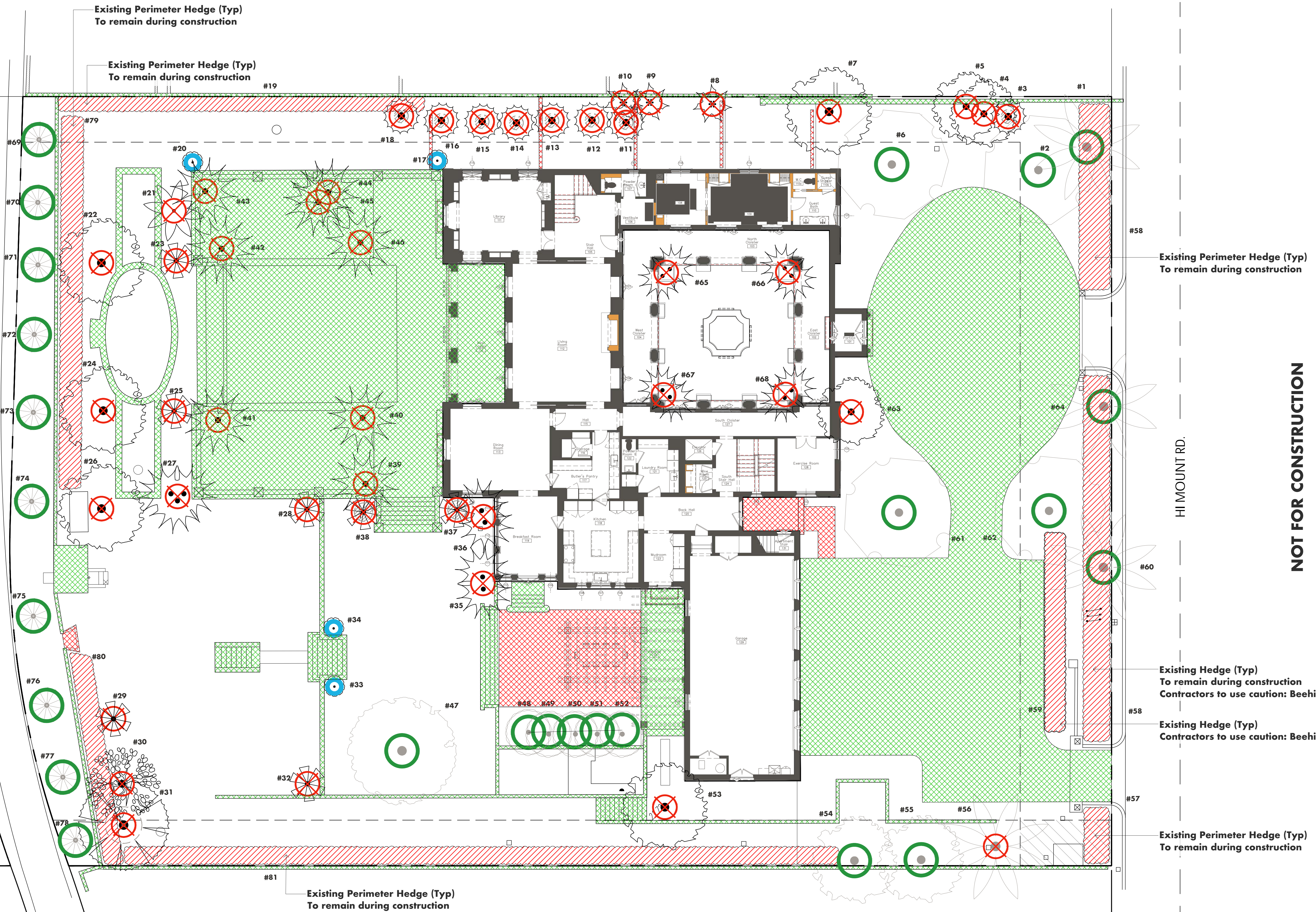
**EX-103**





Disposition Legend

- Tree/Palm to Remain
- Tree/Palm to be Removed
- Tree/Palm to be Relocated
- Tree Hedge to remain
- Tree Hedge to be removed
- Hardscape to remain
- Hardscape to be removed



REVISIONS / SUBMISSIONS		
1	Town Comments	2024.8.26

JONES RESIDENCE  
740 Hi Mount Road, Palm Beach 33480

DEMOLITION PLAN

OWNER



FERNANDO WONG  
OUTDOOR LIVING DESIGN

DRAWN BY:	FW
CHECKED BY:	JB
DATE:	2024.08.26
SCALE:	

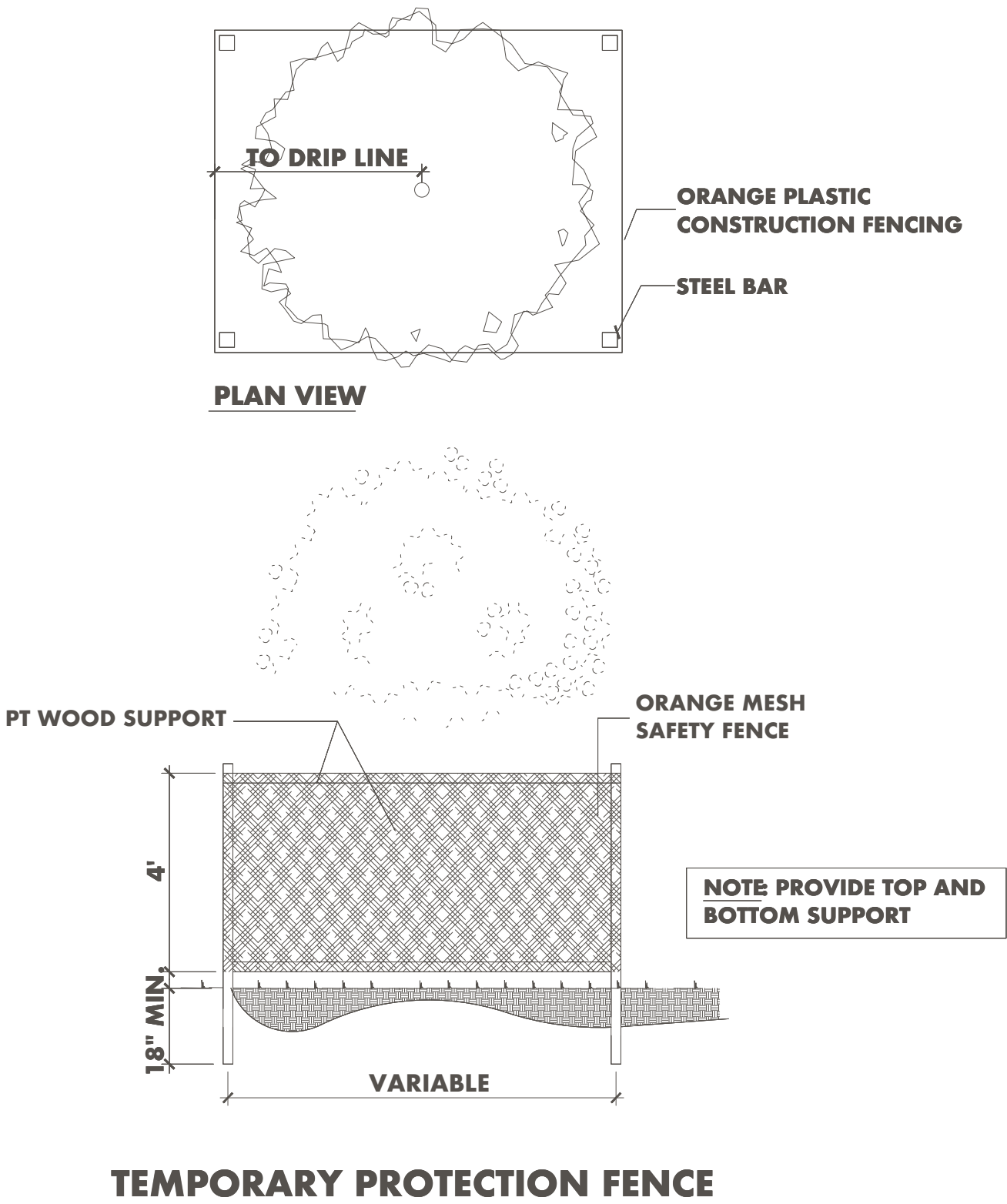
ARC -24-0082  
ZON -24-0005

D-100



EXISTING TREES AND PALMS							
NUMBER	COMMON NAME	SCIENTIFIC NAME	HEIGHT (ft)	SPREAD (ft)	DBH (in)	DISPOSITION	COMMENTS
1	Royal Palm	Roystonea elata				REMAIN	
2	Live Oak	Quercus virginiana				REMAIN	
3	Cabbage Palm	Sabal palmetto				REMOVE	
4	Unkown					REMOVE	
5	Unkown					REMOVE	
6	Oak	Quercus virginiana				REMAIN	
7	Clusia Tree	Clusia rosea				REMOVE	
8	Fishtail Palm	Caryota mitis				REMOVE	
9	Fishtail Palm	Caryota mitis				REMOVE	
10	Fishtail Palm	Caryota mitis				REMOVE	
11	Cabbage Palm	Sabal palmetto				REMOVE	
12	Cabbage Palm	Sabal palmetto				REMOVE	
13	Cabbage Palm	Sabal palmetto				REMOVE	
14	Cabbage Palm	Sabal palmetto				REMOVE	
15	Cabbage Palm	Sabal palmetto				REMOVE	
16	Cabbage Palm	Sabal palmetto				REMOVE	
17	Podocarpus	Podocarpus				RELOCATE	
18	Cabbage Palm	Sabal palmetto				REMOVE	
19	Ficus Hedge	Ficus benamina				REMOVE	
20	Podocarpus	Podocarpus				RELOCATE	
21	Alexander Palm	Ptychosperma elegans				REMOVE	
22	Ligustrum	Ligustrum	13' OA. HT			REMOVE	
23	Pygmy Date Palm	Pheonix Roebellini	9' OA. HT		4" DBH	REMOVE	Single Trunk
24	Ligustrum	Ligustrum	13' OA. HT			REMOVE	
25	Pygmy Date Palm	Pheonix Roebellini	9' OA. HT		4" DBH	REMOVE	Double trunk
26	Unkown		12' OA. HT		12" DBH	REMOVE	
27	Montgomery Palm	Veitchia montgomeryana				REMOVE	Triple trunk
28	Pygmy Date Palm	Pheonix Roebellini				REMOVE	
29	Pygmy Date Palm	Pheonix Roebellini				REMOVE	
30	Seagrape Tree	Coccoloba uvifera	14' OA. HT			REMOVE	
31	Bizmarck Palm	Bizmarckia nobilis	24' OA . HT		14" DBH	REMOVE	
32	Pygmy Date Palm	Pheonix Roebellini				REMOVE	
33	Podocarpus	Podocarpus				RELOCATE	
34	Podocarpus	Podocarpus				RELOCATE	
35	Montgomery Palm	Veitchia montgomeryana				REMOVE	Double trunk
36	Montgomery Palm	Veitchia montgomeryana				REMOVE	
37	Thatch Palm	Thrinax radiata				REMOVE	
38	Thatch Palm	Thrinax radiata				REMOVE	
39	Montgomery Palm	Veitchia montgomeryana				REMOVE	
40	Montgomery Palm	Veitchia montgomeryana				REMOVE	
41	Montgomery Palm	Veitchia montgomeryana				REMOVE	
42	Montgomery Palm	Veitchia montgomeryana				REMOVE	
43	Montgomery Palm	Veitchia montgomeryana				REMOVE	
44	Montgomery Palm	Veitchia montgomeryana				REMOVE	
45	Montgomery Palm	Veitchia montgomeryana				REMOVE	
46	Montgomery Palm	Veitchia montgomeryana				REMOVE	
47	Oak	Quercus virginiana				REMAIN	
48	Orange Jasmine	Murraya paniculata				REMAIN	
49	Orange Jasmine	Murraya paniculata				REMAIN	
50	Orange Jasmine	Murraya paniculata				REMAIN	
51	Orange Jasmine	Murraya paniculata				REMAIN	
52	Orange Jasmine	Murraya paniculata				REMAIN	
53	Orange Jasmine	Murraya paniculata				REMOVE	
54	Ylang Ylang Tree	Cananga odorata				REMAIN	
55	Ylang Ylang Tree	Cananga odorata				REMAIN	
56	Royal Palm	Roystonea elata				REMOVE	
57	Ficus Hedge	Ficus benamina				REMOVE	
58	Ficus Hedge	Ficus benamina				REMOVE	
59	Clusia Hedge	Clusea rosea				REMOVE	
60	Royal Palm	Roystonea elata				REMAIN	
61	Oak	Quercus virginiana				REMAIN	
62	Oak	Quercus virginiana				REMAIN	
63	Unknown					REMOVE	

64	Royal Palm	Roystonea elata				REMAIN	
65	Montgomery Palm	Veitchia montgomeryana				REMOVE	Double trunk
66	Montgomery Palm	Veitchia montgomeryana				REMOVE	Double trunk
67	Montgomery Palm	Veitchia montgomeryana				REMOVE	Double trunk
68	Montgomery Palm	Veitchia montgomeryana				REMOVE	Double trunk
69	Pygmy Date Palm	Pheonix Roebellini				REMAIN	Double trunk
70	Pygmy Date Palm	Pheonix Roebellini				REMAIN	Triple trunk
71	Pygmy Date Palm	Pheonix Roebellini				REMAIN	Double trunk
72	Pygmy Date Palm	Pheonix Roebellini				REMAIN	Double trunk
73	Pygmy Date Palm	Pheonix Roebellini				REMAIN	Quadruple trunk
74	Pygmy Date Palm	Pheonix Roebellini				REMAIN	Double trunk
75	Pygmy Date Palm	Pheonix Roebellini				REMAIN	Double trunk
76	Pygmy Date Palm	Pheonix Roebellini				REMAIN	Double trunk
77	Pygmy Date Palm	Pheonix Roebellini				REMAIN	Triple trunk
78	Pygmy Date Palm	Pheonix Roebellini				REMAIN	Single trunk
79	Hedge Unkown					REMOVE	
80	Hedge Unknown					REMOVE	
81	Hedge Unknown					REMOVE	



NOT FOR CONSTRUCTION

D100

DEMOLITION LEGEND

04'8'16'32'

SCALE: 1/16" = 1'-0"

NORTH

REVISIONS / SUBMISSIONS		
1	Town Comments	2024.8.26

JONES RESIDENCE

740 Hi Mount Road, Palm Beach 33480

TREE DISPOSITION LEGEND

OWNER

REGISTERED LANDSCAPE ARCHITECT  
LAURENCE BAYLOR  
STATE OF FLORIDA

FERNANDO WONG

OUTDOOR LIVING DESIGN

DRAWN BY: FW

CHECKED BY: JB

DATE: 2024.08.26

SCALE:

ARC -24-0082  
ZON -24-0005

D-101



SCREENING LEGEND

- Tree/Palm Protection  
\* All Existing Trees/ Palms to Remain Shall have Tree Barricades
- Construction Screening Fence  
18' Ht, 90% Opacity
- Privacy Hedge to Remain  
During Construction Only

Existing Hedge (Typ)  
To remain during construction

18' HT. Black Screen Mesh  
90% Opaque

All Existing Trees and Palms  
Provide Tree Protection Refer to D-101

Existing Hedge (Typ)  
To remain during construction

Construction Screening Fence  
18' Ht., 90% Opaque Screening

6' Ht. Double Gate  
Black Mesh, 90% Opaque

HI MOUNT RD.

All Existing Trees and Palms  
Provide Tree Protection Refer to D-101

Existing Hedge (Typ)  
To remain during construction

6' Ht. Double Gate  
Black Mesh, 90% Opaque

Existing Hedge (Typ)  
To remain during construction

All Existing Trees and Palms  
Provide Tree Protection Refer to D-101

All Existing Trees and Palms  
Provide Tree Protection Refer to D-101

Existing Hedge (Typ)  
To remain during construction

18' HT. Black Screen Mesh  
90% Opaque

NOT FOR CONSTRUCTION

0 2' 4' 8' 16' 24'  
SCALE: 3/32" = 1'-0"



REVISIONS / SUBMISSIONS		
1	Town Comments	2024.8.26

JONES RESIDENCE  
740 Hi Mount Road, Palm Beach 33480

CONSTRUCTION SCREENING PLAN

OWNER



FERNANDO WONG  
OUTDOOR LIVING DESIGN

DRAWN BY: FW  
CHECKED BY: JB  
DATE: 2024.08.26  
SCALE:

ARC -24-0082  
ZON -24-0005

CSP-100

D  
100

DEMOLITION PLAN





1 Front Yard Elevation (East)  
R-100



2 Rear Yard Elevation (West)  
R-100

0 1' 4' 8' 16'  
SCALE: 1/8" = 1'-0"

NOT FOR CONSTRUCTION

REVISIONS / SUBMISSIONS		
1	Town Comments	2024.8.26

JONES RESIDENCE  
740 Hi Mount Road, Palm Beach 33480

RENDERED ELEVATION

OWNER



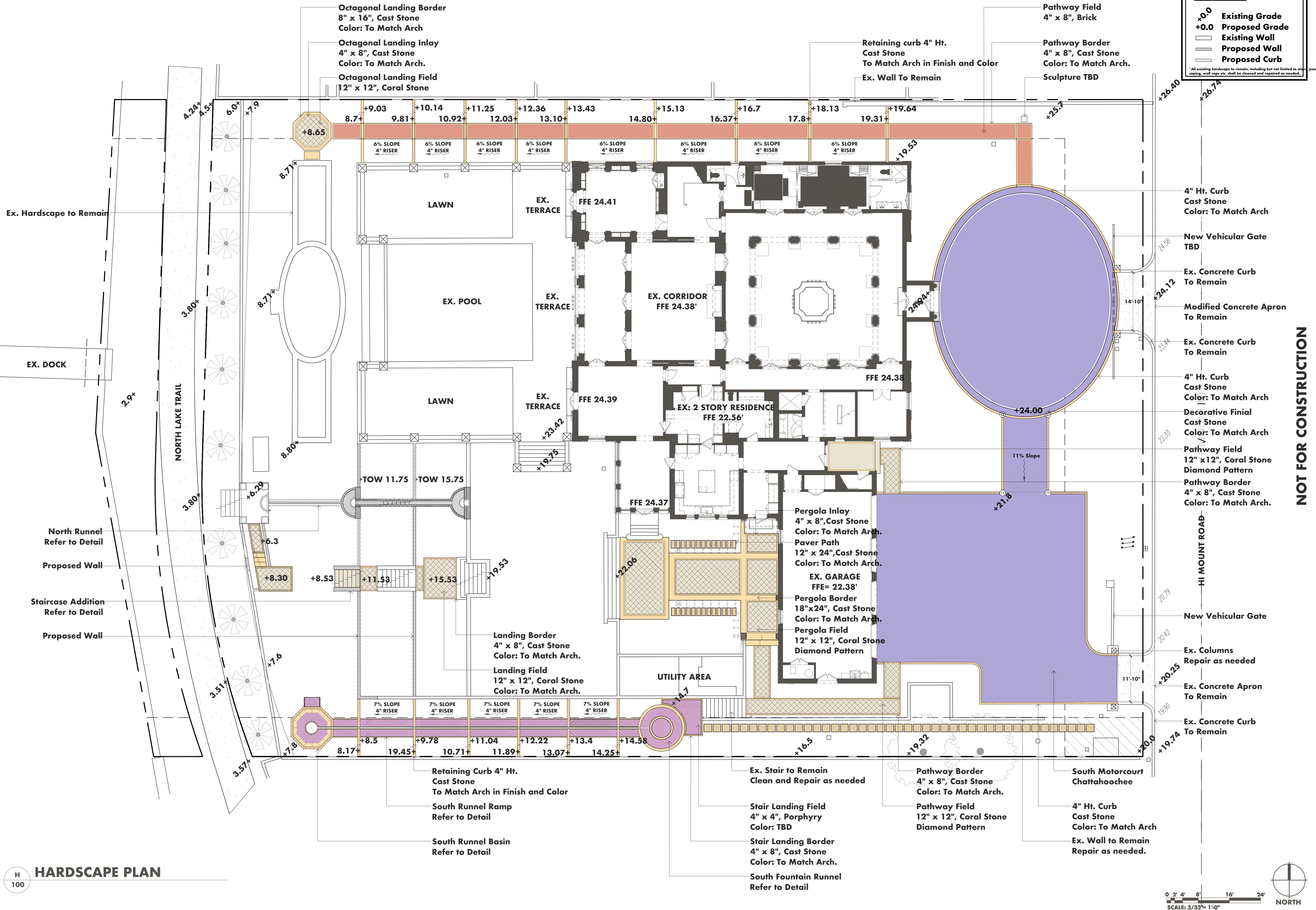
FERNANDO WONG  
OUTDOOR LIVING DESIGN

DRAWN BY:	FW
CHECKED BY:	JB
DATE:	2024.08.26
SCALE:	

ARC -24-0082  
ZON -24-0005

H-100





REVISIONS / SUBMISSIONS		
1	Town Comments	2024.8.26

JONES RESIDENCE  
740 Hi Mount Road, Palm Beach 33480

HARDSCAPE PLAN

OWNER



FERNANDO WONG  
OUTDOOR LIVING DESIGN

DRAWN BY: FW  
CHECKED BY: JB  
DATE: 2024.08.26  
SCALE:

ARC -24-0082  
ZON -24-0005

H-100





● **Material: Cast Stone**  
**Size: 4" x 8"(480SF), 12" x 24"(340SF), 8" x 16"(85SF), 24" x 24"(172SF), 4"HT Curb(566LF), 14" x 24"Steps(43SF)**  
**Color: To Match Architecture**



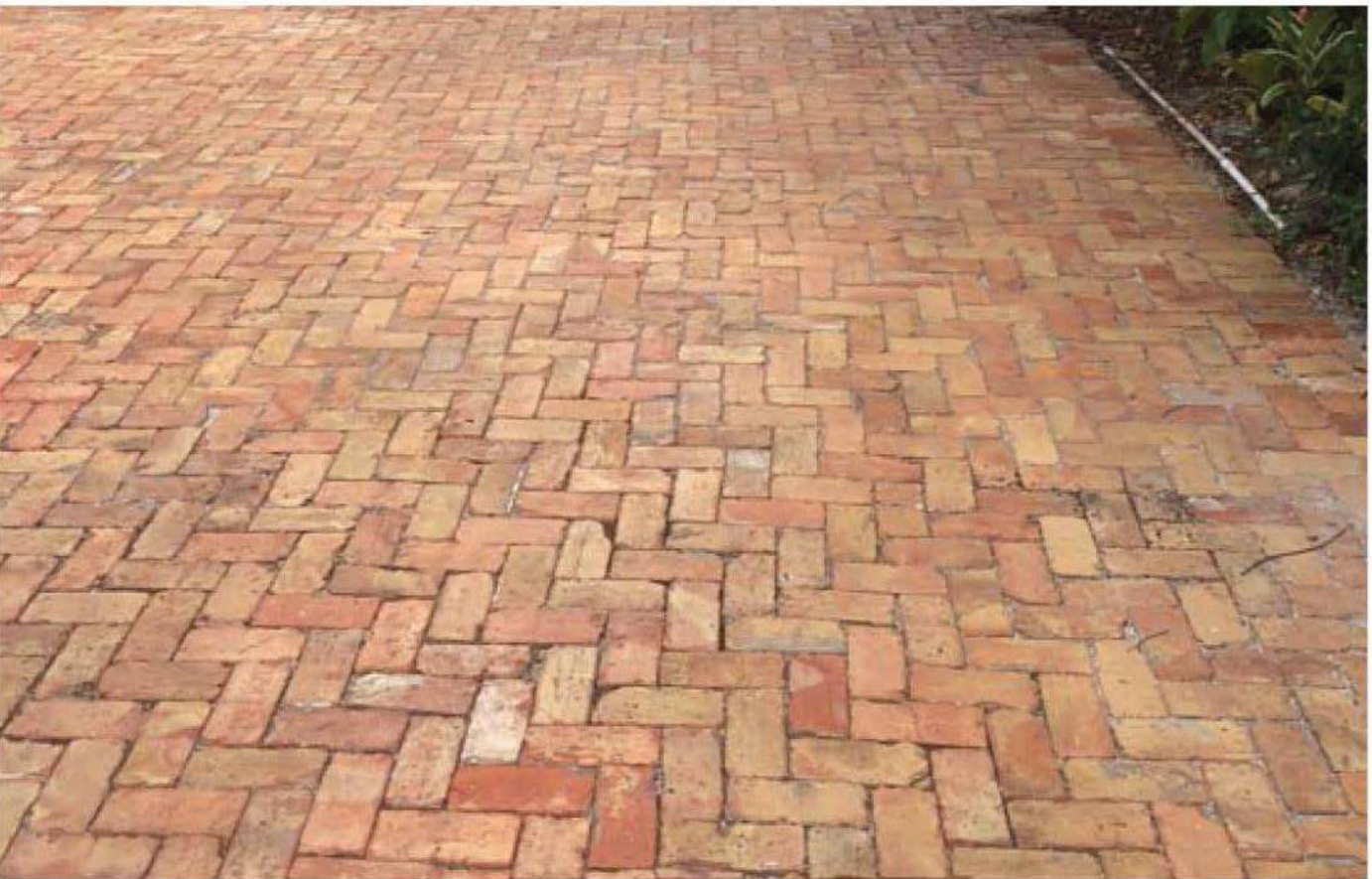
● **Material: Coral Stone**  
**Size: 12" x 12"(1,010 SF)**  
**Color: To Match Existing**



● **Material: Porphyry**  
**Size: 4" x 4"(455SF)**  
**Color: TBD**



● **Material: Granite Gravel**  
**Size: #54 plus Minus (4,990SF)**  
**Color: Grey**



● **Material: Brick**  
**Size: 4" x 8"(590SF)**  
**Color: Red**

NOT FOR CONSTRUCTION

REVISIONS / SUBMISSIONS		
#	Town Comments	2024.8.26

**JONES RESIDENCE**  
740 Hi Mount Road, Palm Beach 33480

**HARDSCAPE SCHEDULE**

OWNER



**FERNANDO WONG**  
OUTDOOR LIVING DESIGN

DRAWN BY:	FW
CHECKED BY:	JB
DATE:	2024.08.26
SCALE:	

ARC -24-0082  
ZON -24-0005



**LEGEND**

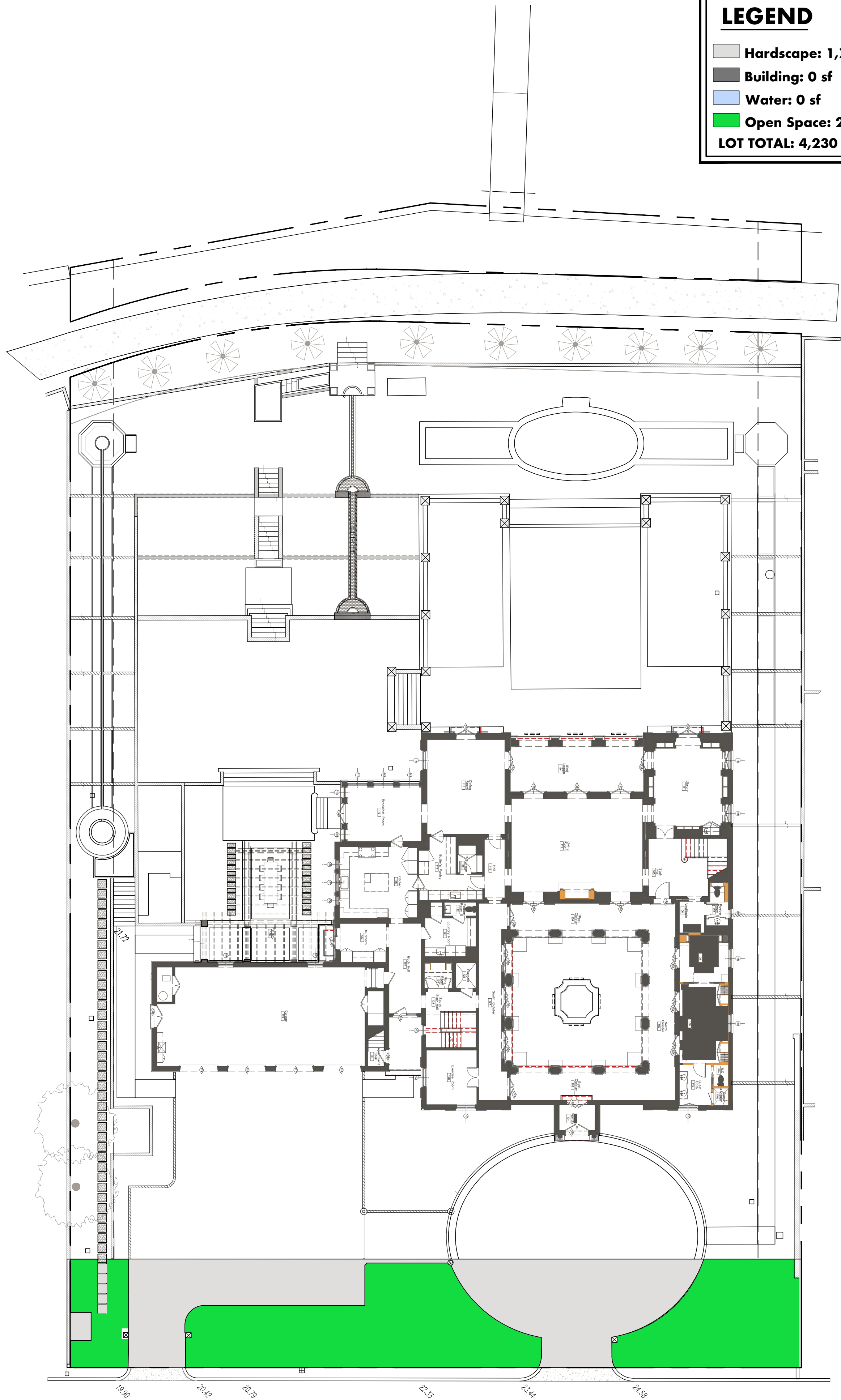
■ Hardscape: 1,757sf (42%)

■ Building: 0 sf

■ Water: 0 sf

■ Open Space: 2,473sf (58%)

LOT TOTAL: 4,230 sf



H 102A FRONT YARD OPEN SPACE

**LEGEND**

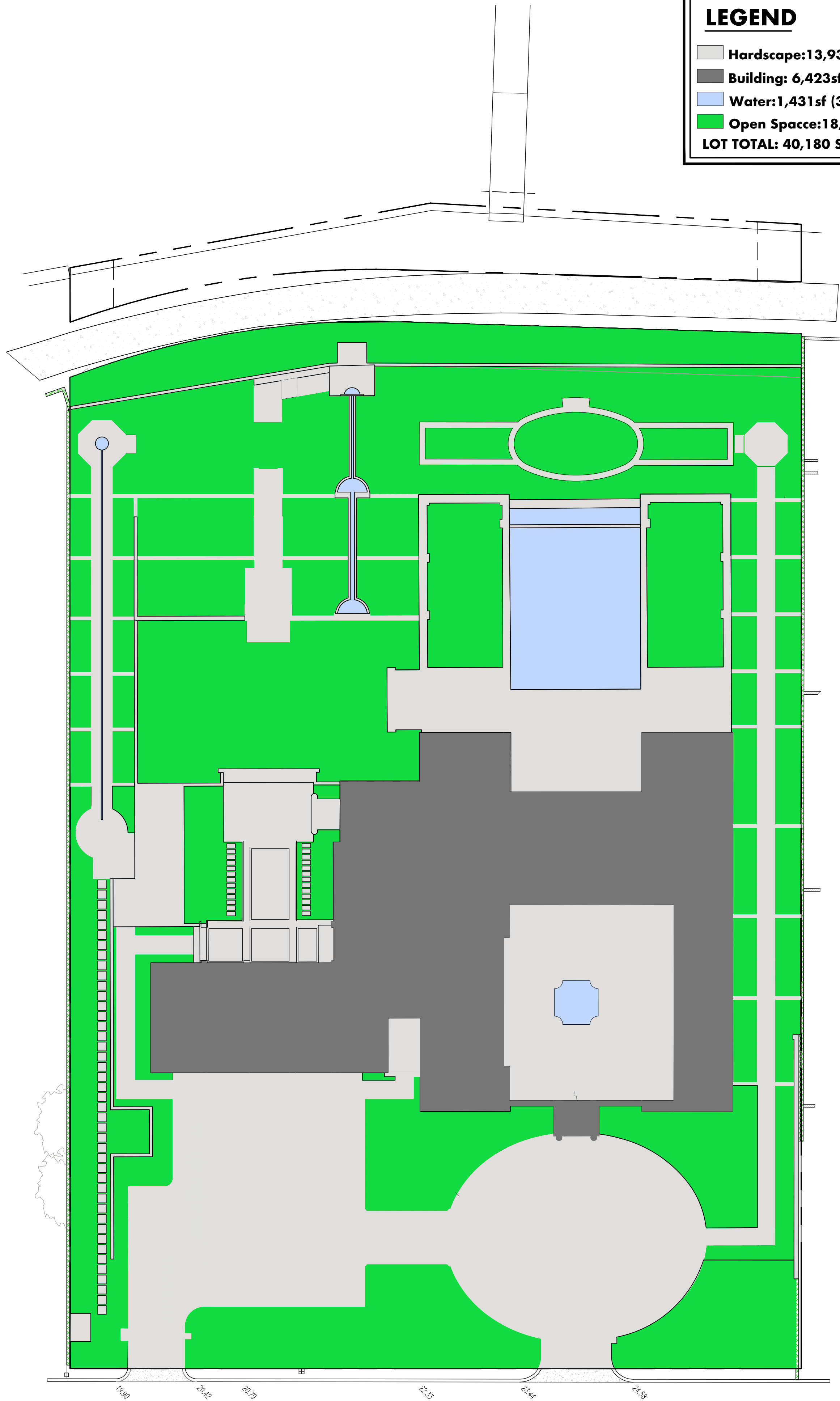
■ Hardscape:13,933sf (34.5 %)

■ Building: 6,423sf (16%)

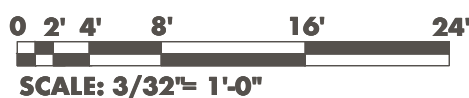
■ Water:1,431sf (3.5%)

■ Open Space:18,393sf (46%)

LOT TOTAL: 40,180 SF



H 102B OVERALL OPEN SPACE



NOT FOR CONSTRUCTION

REVISIONS / SUBMISSIONS		
1	Town Comments	2024.8.26

**JONES RESIDENCE**  
740 Hi Mount Road, Palm Beach 33480

**LANDSCAPE OPEN SPACE DIAGRAMS**

OWNER



**FERNANDO WONG**  
OUTDOOR LIVING DESIGN

DRAWN BY: FW  
CHECKED BY: JB  
DATE: 2024.08.26  
SCALE:

ARC -24-0082  
ZON -24-0005

**H-102**







PLANTING SCHEDULE						
TREES						
SYMBOL	KEY	QTY	PLANTING NAME	SIZE/SPACING	CONTAINER	SPECIFICATIONS
	EX.1	5	Quercus Virginiana LIVE OAK	-	-	EX. TO REMAIN, PROVIDE TREE PROTECTION
	EX.2	5	Orange Jasmine	-	-	EX. TO REMAIN, PROVIDE TREE PROTECTION
	POB	4	Plumeria obtusa 'Singapore White' FRANGIPANI	16'-18' HT	FG	Provide Photo for LA Approval
	TIM	8	Tabebuia impetiginosa PURPLE TRUMPET TREE	14' O.A. HT	FG	Provide Photo for LA Approval
	CBR	101	Calophyllum brasiliense BRAZILIAN BEAUTY LEAF	14'-18' HT.	100 GAL.	STD. 3' CT.
	CER	23	Conocarpus erectus GREEN BUTTONWOOD	14'-18' HT.	100 GAL.	STD. 3' CT.
	IAT	34	Ilex x attenuata 'East Palatka' EAST PALATKA HOLLY	14'-18' HT.	100 GAL.	STD. 3' CT.
PALMS						
SYMBOL	KEY	QTY	PLANTING NAME	SIZE	CONTAINER	SPECIFICATIONS
	CMi	4	Caryota mitis FISHTAIL PALM	10-12' HT	45 GAL.	
	PCA	2	Phoenix Canariensis CANARY ISLAND DATE PALM	10-12' HT	FG	Provide Photo for LA Approval
	PRE	3	Phoenix reclinata SENEGAL DATE PALM	12'-15' CT.	FG	Provide Photo for LA Approval
	PRO	8	Phoenix roebellini PYGMY DATE PALM	6'-8' CT.	FG	Provide Photo for LA Approval
	PMAC	16	Ptychosperma macarthurii MACARTHUR PALM	25' O.A. HT.	45 GAL.	Provide Photo for LA Approval
	REX	18	Rhaphis excelsa LADY PALM	6' O.A. HT.	15 GAL.	
	VMO	8	Veitchia montgomeryana MONTGOMERY PALM	25' O.A. HT.	FG	Provide Photo for LA Approval
	WRO	15	Washingtonia robusta WASHINGTON PALM	28'-30' CT.	FG	Provide Photo for LA Approval
HEDGES						
SYMBOL	KEY	QTY	PLANTING NAME	SIZE/SPACING	CONTAINER	SPECIFICATIONS
	CCY	209	Capparis cynophallophora JAMAICAN CAPER	6' HT.	30 GAL.	Full to base
	CIC	435	Chrysobalanus icaco RED TIP COCOPLUM	5 HT.	30 GAL.	Bush
	CIC.1	15	Chrysobalanus icaco RED TIP COCOPLUM	8'HT.	75 GAL	Bush
	PMA	32	Podocarpus macrophyllus 'Maki' JAPANESE YEW	6" O.A. HT.	25 GAL.	Full to base
SHRUBS						
SYMBOL	KEY	QTY	PLANTING NAME	SIZE/SPACING	CONTAINER	SPECIFICATIONS
	BOR	563	Begonia odorata 'Alba' WHITE BEGONIA	12" Ht. x 12"Spr. 18" O.C.	3 GAL.	
	NOL	32	Nerium oleander 'Petite Pink' 'PETITE PINK' OLEANDER	4-5' HT.	15 GAL.	

	PAU	32	Plumbago auriculata 'Alba' WHITE PLUMBAGO	3' HT.	7 GAL.	
ACCENTS						
	CRE	4	Cycas revoluta KING SAGO PALM	5' SPR.	25 GAL.	
	DWA	2	Dombeya wallichii PINK CLOUD DOMBEYA	5' O.A. HT.	45 GAL.	
	NOL	8	Nerium oleander 'Calypso' CALYPSO OLEADER	8' HT.	25 GAL.	
	PMA1	12	Podocarpus macrophyllus PODOCARPUS	8'-10' HT.	65 GAL.	Column
	SPA1	16	Syzygium paniculatum 'Globulus' EUGENIA GLOBE	18" x 18" Sphere	7 GAL.	
	SPA	28	Syzygium paniculatum 'Globulus' EUGENIA GLOBE	30" X 30" Sphere	7 GAL.	
GRASSES GROUNDCOVERS						
SYMBOL	KEY	QTY	PLANTING NAME	SIZE/SPACING	CONTAINER	SPECIFICATIONS
	AIN	137	Agapanthus inapertus 'White Cloud' WHITE LILY OF THE NILE	24" O.C.	7 GAL.	(548 sf)
	AOR	16	Agapanthus orientalis LILY OF THE NILE	24" O.C.	3 GAL.	(64 sf)
	CJA	138	Crinum jagus 'St. Christopher' ST. CHRISTOPHER LILY	18" O.C.	3 GAL.	(310 sf)
	IVO	513	Ilex vomitoria 'Stokes Dwarf' STOKES DWARF HOLLY	12"Ht. x 12" Spr. 12" O.C.	3 GAL.	(513 sf)
	LIR	903	Liriope muscari LILYTURF	12"Ht. x 12" Spr. 10" O.C.	1 GAL.	(505 sf)
	NOB	966	Nephrolepis oblitterata KIMBERLY QUEEN FERN	24" O.C.	3 GAL.	(3,865 sf)Full
	OJA	912	Ophiopogon japonicus 'Nanus' <del>DWARF MONDO GRASS</del>	4" O.C.	4" Plugs	(4,204 sf)
	PNO	4950	Phyla nodiflora FROGFRUIT	4" O.C.	4" PLUGS	(22,812sf)
	TAS	5278	Trachelospermum asiaticum JASMINE MINIMA	4" O.C.	4" PLUGS	(24,331)
VINES						
SYMBOL	KEY	QTY	PLANTING NAME	SIZE	CONTAINER	SPECIFICATIONS
	BJA	15	Bougainvillea 'James Walker' JAMES WALKER BOUGAINVILLEA	12' HT.	15 GAL.	To climb Palm Trunk
	BJA	135	Bougainvillea 'James Walker' JAMES WALKER BOUGAINVILLEA	12' HT.	15 GAL.	S.S. Trellis
	FPU	200	Ficus pumila CREEPING FIG	24" O.C.	1 GAL.	
	SFL	8	Stephanotis floribunch BRIDAL WREATH VINE	6' HT.	7 GAL.	
	TGR	10	Thumbergia grandiflora BLUE SKY VINE	6' HT.	7 GAL.	S.S. Trellis
	TJA	123	Trachelospermum jasminoides CONFEDERATE JASMINE	14' HT.	25 GAL.	S.S. Trellis, Diamond Pattern

Landscape Legend		
Property Address:	740 Hi Mount Rd	
Lot Area (sq. ft.):	40,180	
	REQUIRED	PROPOSED
Landscape Open Space (LOS) (Sq Ft and %)	18,081 sf (45%)	18393 sf (46%)
LOS to be altered (Sq FT and %)	N/A	N/A
Perimeter LOS (Sq Ft and %)	N/A	N/A
Front Yard LOS (Sq Ft and %)	1,691.88 sf (40%)	2473 sf (58%)
Native Trees %	30% of 170= 51 Trees	57 (33.5%)
Native Shrubs & Vines %	30% of 1,318= 395 Shrubs	659 (50%)
Native Groundcover %	30% of 57,152=17,146	26,677 (46%)



NOT FOR CONSTRUCTION

REVISIONS / SUBMISSIONS		
1	Town Comments	2024.8.26

JONES RESIDENCE  
740 Hi Mount Road, Palm Beach 33480

PLANTING SCHEDULE

OWNER

FERNANDO WONG  
OUTDOOR LIVING DESIGN

DRAWN BY: FW  
CHECKED BY: JB  
DATE: 2024.08.26  
SCALE:   
  
ARC -24-0082  
ZON -24-0005

L-102





GENERAL NOTES

(See plant specification and details for additional standards)

- All plant material is to be Florida Number 1 or better pursuant to the Florida Department of Agriculture's Grades and Standards for Nursery Plants.
- All plants are to be top dressed with a minimum 3" layer of Melaleuca mulch, Eucalyptus mulch or equal.
- Planting plans shall take precedence over plant list in case of discrepancies.
- No changes are to be made without the prior consent of the Landscape Architect and Owner. Additions and or deletions to the plant material must be approved by the project engineer.
- Landscape Contractor is responsible for providing their own square footage takeoffs and field verification for 100% sod coverage for all areas specified.
- All landscape areas are to be provided with automatic sprinkler system which provide 100% coverage, and 50% overlap.
- All trees in lawn areas are to receive a 24" diameter mulched saucer at the base of the trunk.
- No mulch, fill or soil will be placed over the rootballs or within 4" of the trunks of the newly installed trees, and the trees will be installed at or slightly above the soil grade.
- All straps, poles and braces shall be removed from all of the installed trees and palms within the 1-year of planting.
- No changes are to be made without the prior consent of the Landscape Architect, owner, City Urban Forester and City Planning Department. Additions and or deletions to the plant material must be approved per the Project Engineer, City Urban Forester and City Planning Department.
- Trees are to be planted within parking islands after soil is brought up to grade. Deeply set root balls are not acceptable.
- Planting soil for topsoil and backfill shall be 50/50 mix, nematode free. Planting soil for annual beds to be comprised of 50% Canadian peat moss, 25% salt free coarse sand and 25% Aerolite.
- Tree and shrub pits will be supplemented with "Agriform Pells", 21 gram size with a 20-10-5 analysis, or substitute application accepted by Landscape Architect. Deliver in manufacturer's standard containers showing weight, analysis and name of manufacturer.
- Tree protection fences shall be constructed prior to any construction activity including grubbing for all trees/palms to remain or be relocated. The fences should be of sturdy construction, 4x4 posts with wire mesh. Fences must be intact until the project is completed. They should not be removed or dropped for any reason without authorization from the city Urban Forester. No activity or disturbance should occur within the fenced areas, including vehicle use, storage of materials, dumping of liquids or materials, grade changes, grubbing and mechanical trenching for irrigation, electrical and lighting, etc.
- Landscape contractor to provide landscape architect photos of all trees and palms prior to installation.
- Landscape contractor to confirm plant quantities.
- Landscape contractor to advise landscape architect if plant description minimums are not met.
- The Landscape Contractor is to locate and verify all underground and overhead utilities prior to beginning work. Contact proper utility companies and / or General Contractor prior to digging for field verification. The Owner and the Landscape Architect shall not be responsible for any damages to utility or irrigation lines (see Roadway Plans for more utility notes).
- Landscape Contractor is to verify all current drawings and check for discrepancies and bring to the attention of the Landscape Architect prior to commencing with the work.
- All unattended and unplanted tree pits are to be properly barricaded and flagged during installation.
- All planting plans are issued as directives for site layout. Any deviations, site changes, etcetera are to be brought to the attention of the Landscape Architect for clarification prior to installation.

NOT FOR CONSTRUCTION

REVISIONS / SUBMISSIONS		
1	Town Comments	2024.8.26

JONES RESIDENCE 740 Hi Mount Road, Palm Beach 33480	LANDSCAPE NOTES AND DETAILS

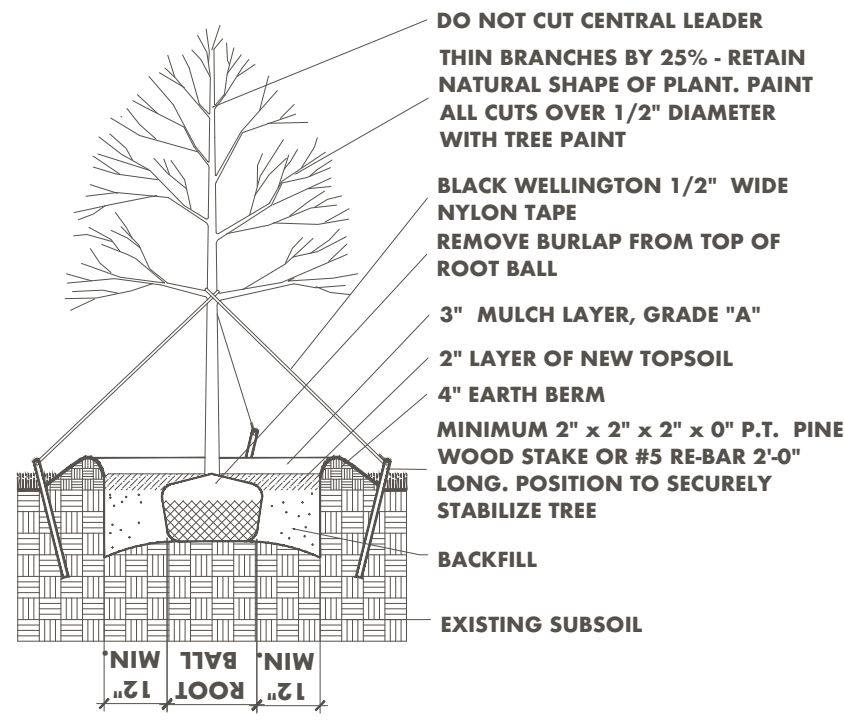
OWNER
-------



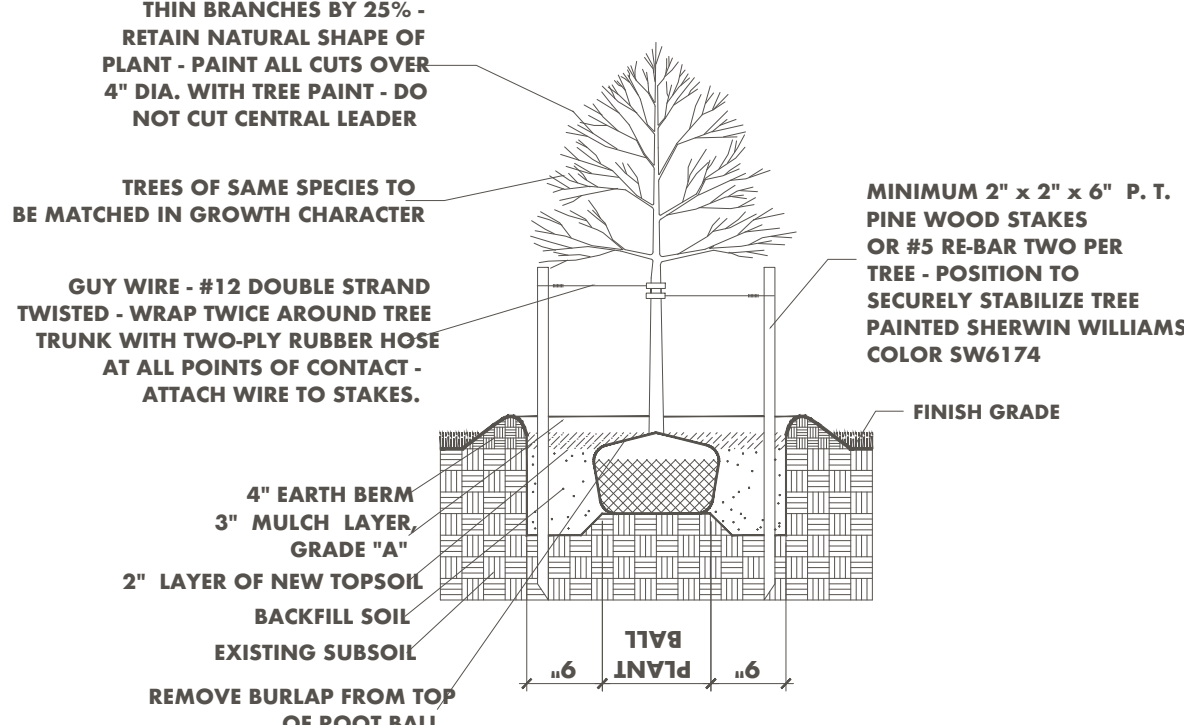
FERNANDO WONG OUTDOOR LIVING DESIGN
--

DRAWN BY:	FW
CHECKED BY:	JB
DATE:	2024.08.26
SCALE:	

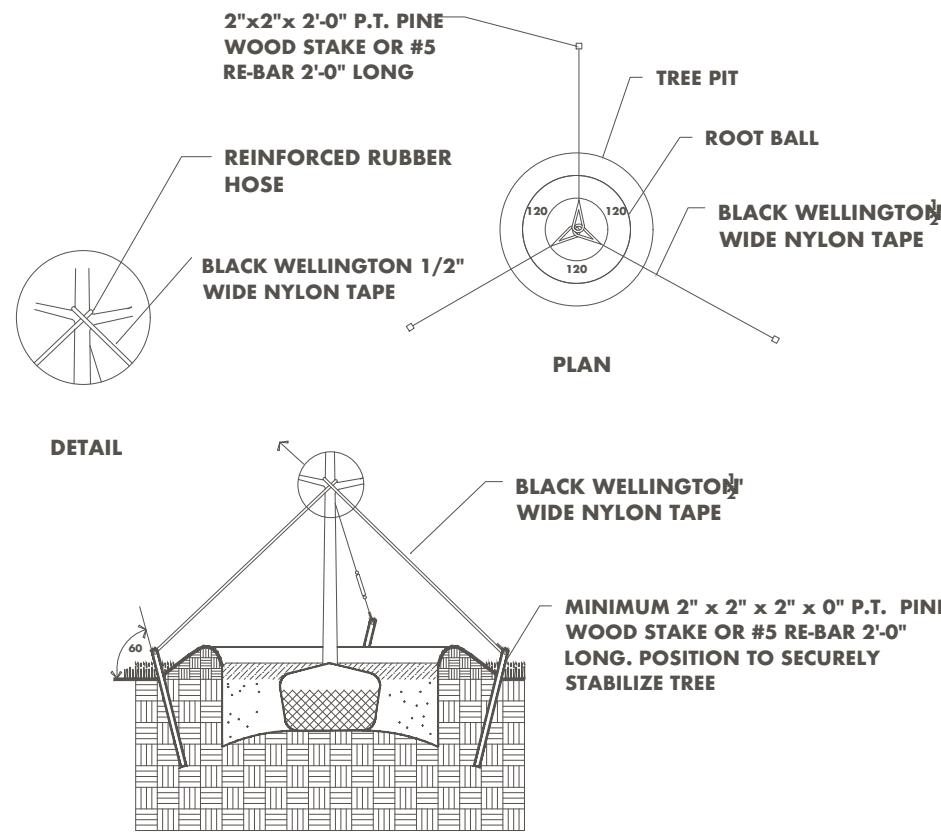
ARC -24-0082 ZON -24-0005
------------------------------



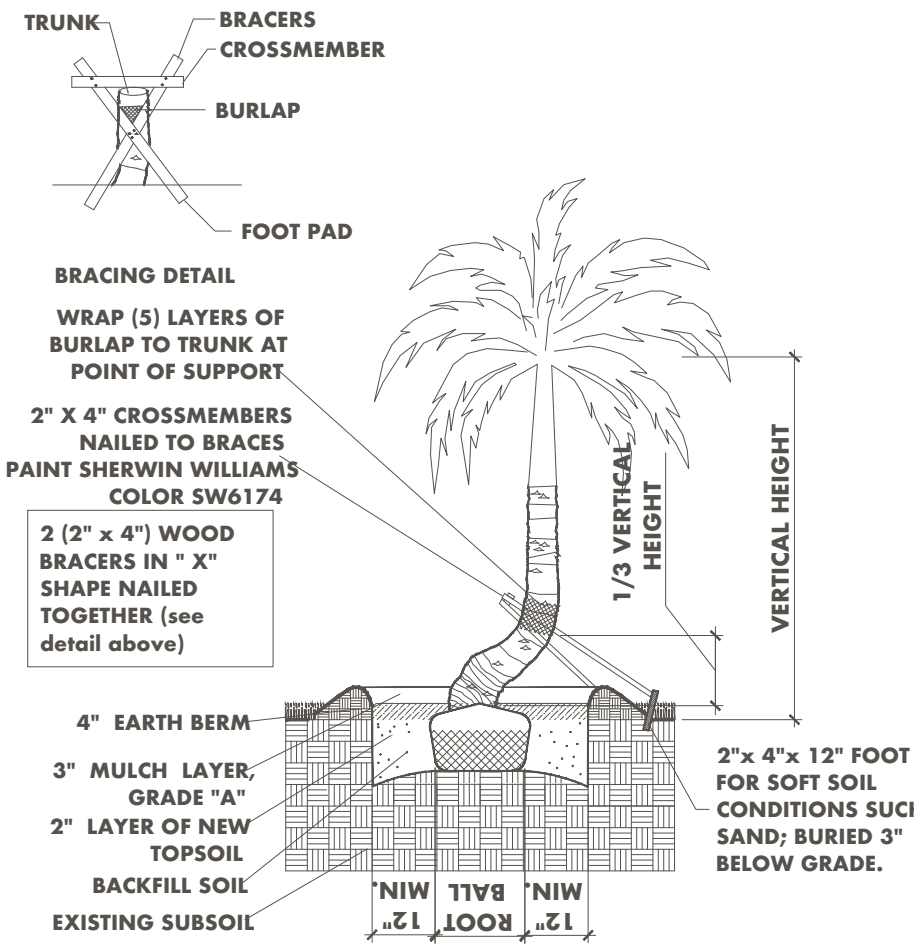
LARGE TREE PLANTING DETAIL



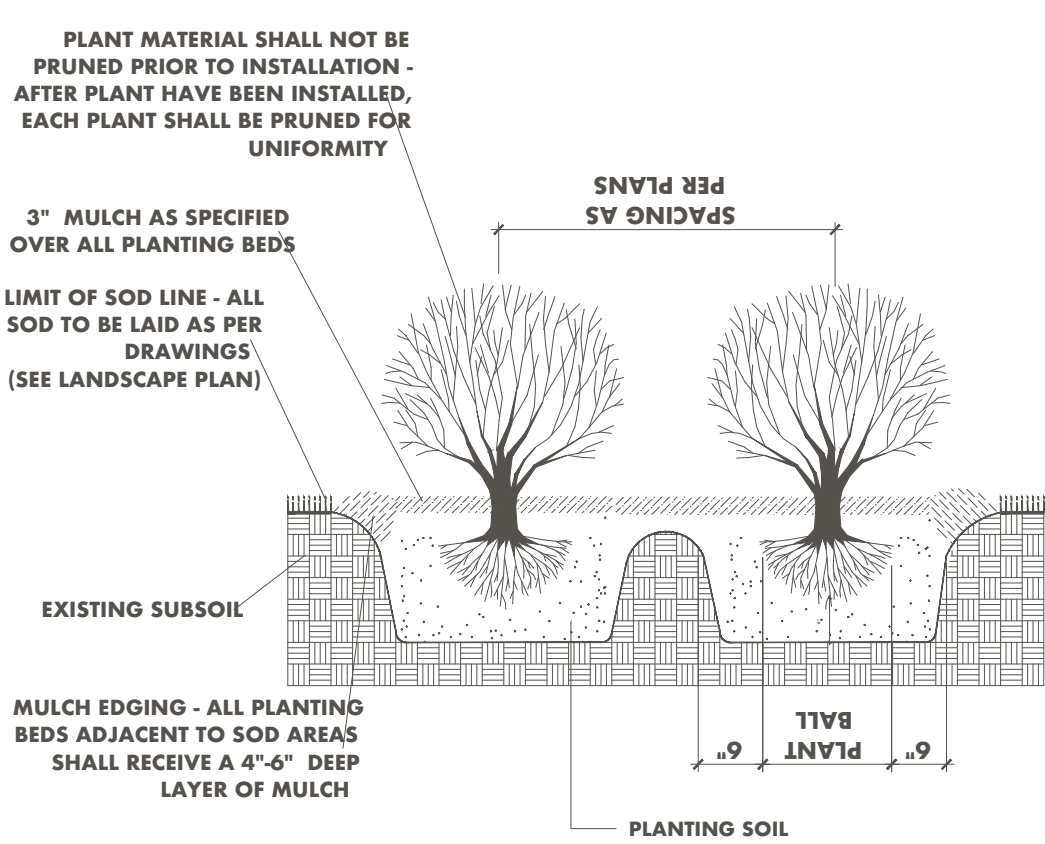
SMALL TREE PLANTING DETAIL



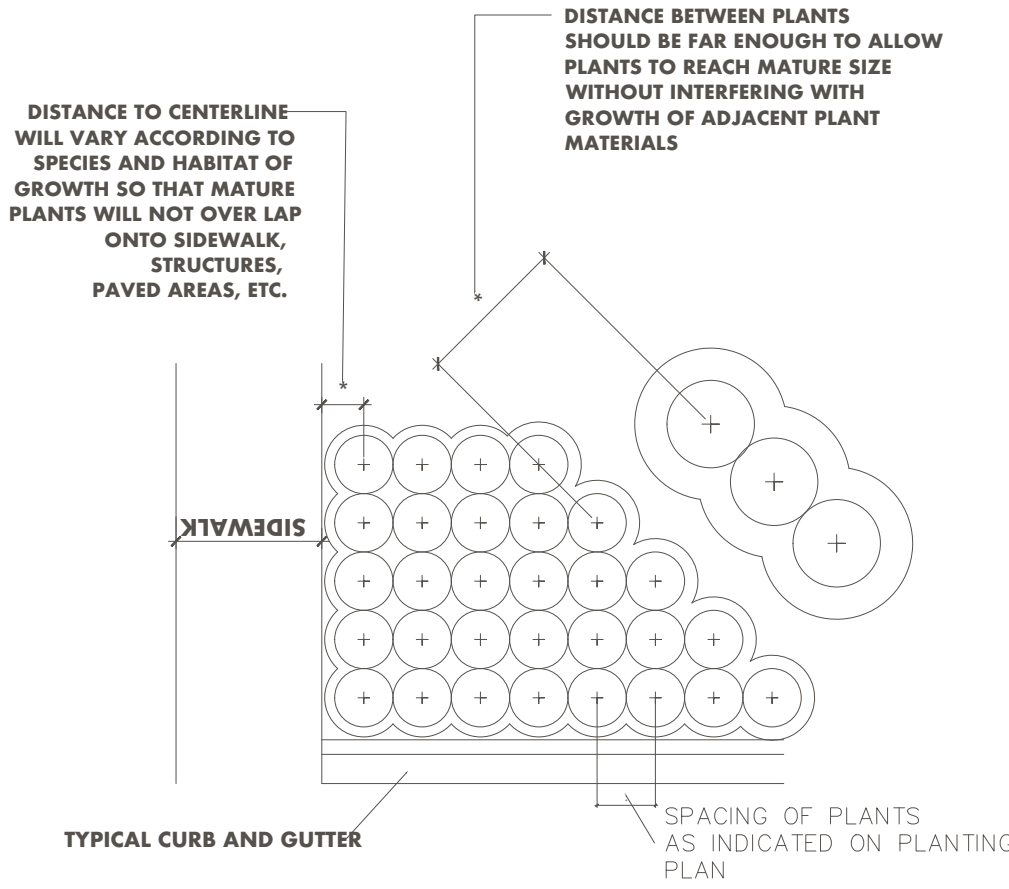
TYPICAL TREE GUYING DETAIL



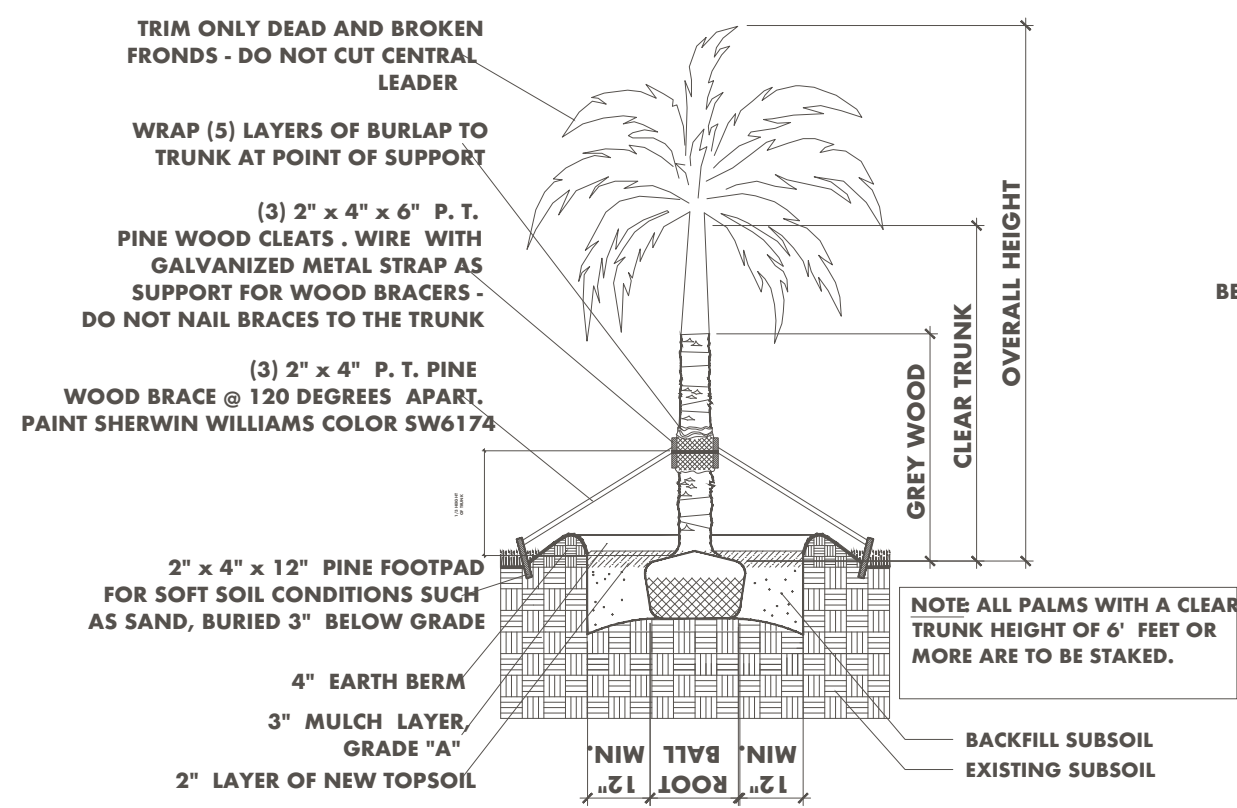
CURVED TRUNK PALM PLANTING DETAIL



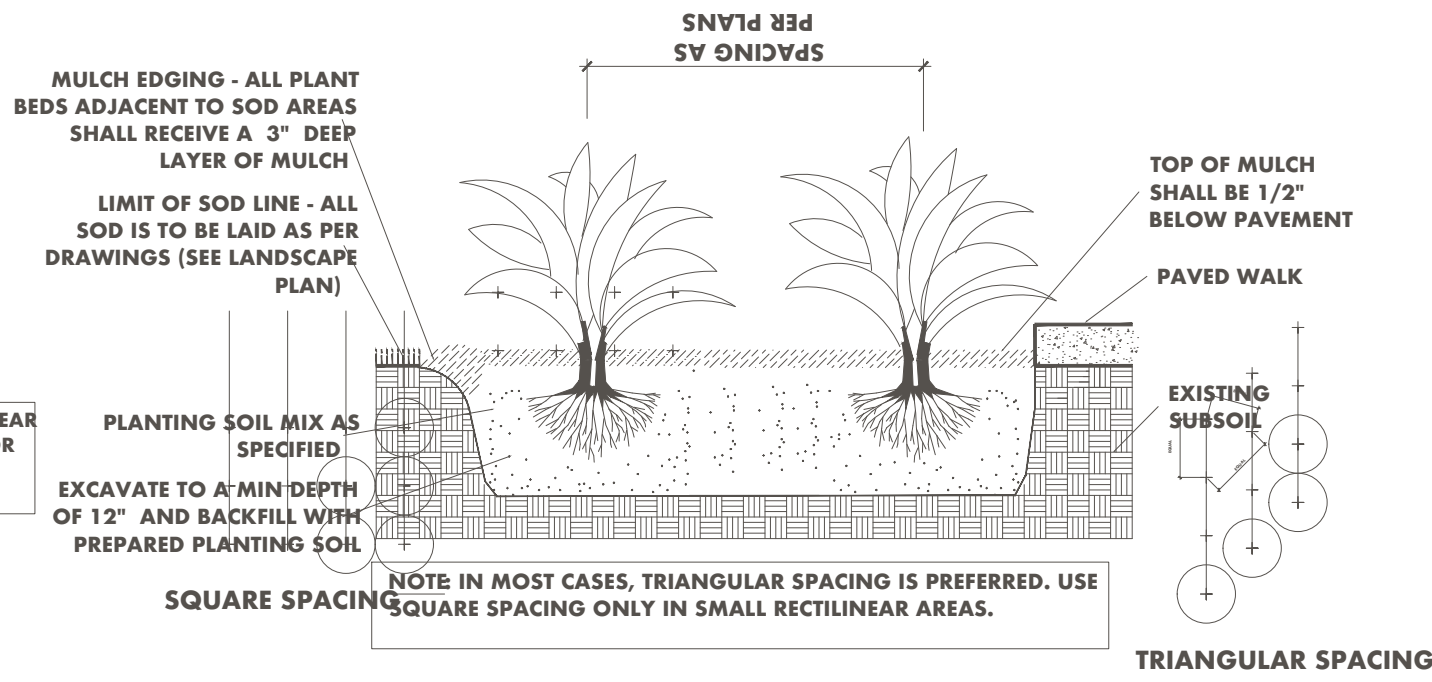
TYPICAL SHRUB PLANTING DETAIL



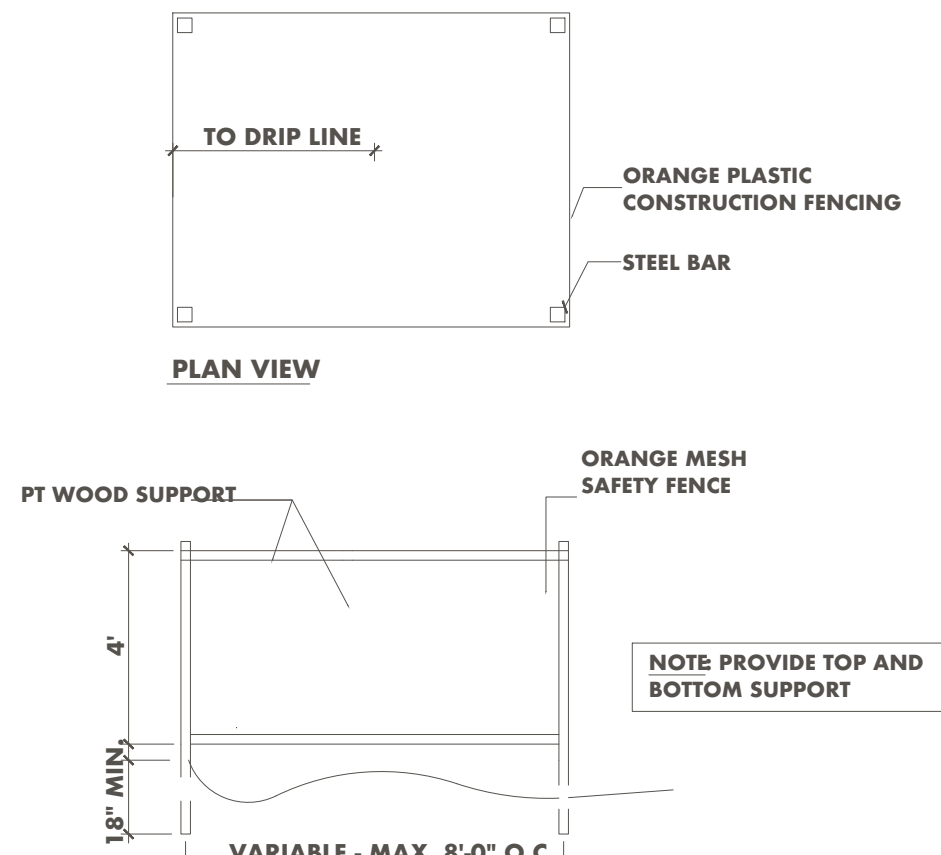
TYPICAL CONTAINER SPACING DETAIL



STRAIGHT TRUNK PALM PLANTING DETAIL



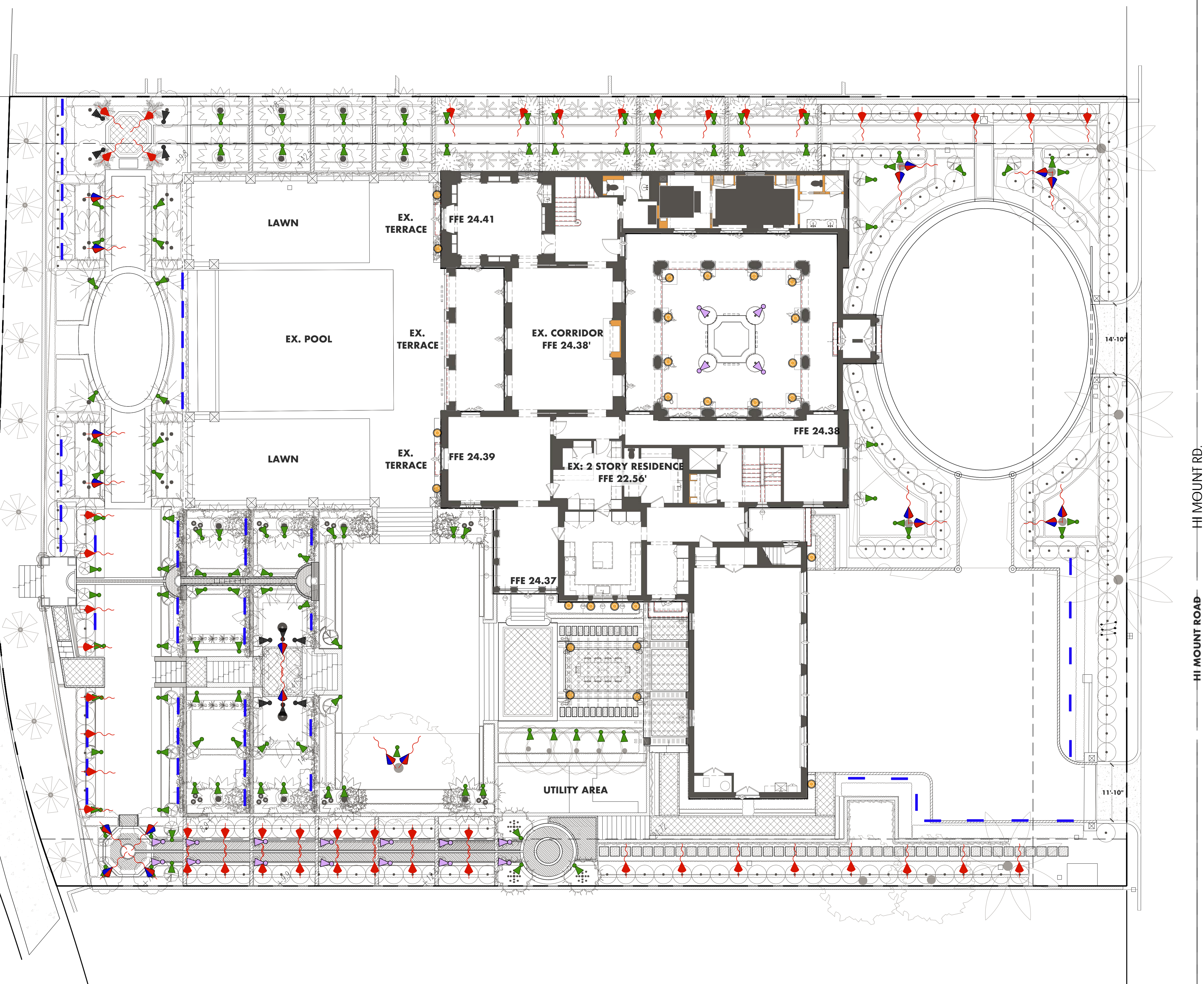
TYPICAL GROUNDCOVER PLANTING DETAIL



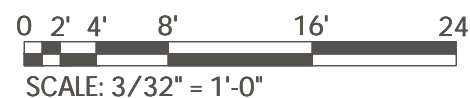
TEMPORARY PROTECTION FENCE



LEGEND		QTY
	Up Light: Ground Spike & Stem	113
	Up Light: Ground Spike	10
	Down Light: Large Tree Strap	20
	Down Light: Small Tree Strap	49
	Up Light: Stem	53
	Well Light	26
	Up Light: Small	18



NOT FOR CONSTRUCTION



REVISIONS / SUBMISSIONS		
1	Town Comments	2024.8.26

JONES RESIDENCE  
740 Hi Mount Road, Palm Beach 33480

OWNER

FERNANDO WONG  
OUTDOOR LIVING DESIGN

DRAWN BY: FW

CHECKED BY: JB

DATE: 2024.08.26

SCALE:

ARC -24-0082

ZON -24-0005

LL-100



