

The background of the slide is a photograph of a tropical street scene. On the left, a multi-story building with balconies is visible. The street is lined with tall palm trees, and several cars are parked along the side. A stone pillar with a lamp on top is visible on the right side of the street. The sky is blue with some clouds. A large, dark blue diagonal shape is overlaid on the right side of the image, containing the title text.

# Town of Palm Beach Comprehensive Parking Plan Update



Additional 30-minute  
Free Parking

ParkMobile Hours &  
Rates

Resident Stickers

Placard Program

Teacher Parking

Parking Plan  
Implementation





Additional  
30-minute  
Free Parking



Additional spaces  
on the west side of  
S. County Rd

Royal Palm Way

South County Rd

Brazilian Ave

Australian Ave



Additional  
30-minute  
Free Parking



Additional spaces  
on the west side of  
S. County Rd



Seaview Ave

South County Rd

Royal Palm Way



# ParkMobile Hours & Rates



**\$5  
hour**

**\$7  
hour**





**ONE P**PARKING

**PARKING RATES**

0-10mins.....	\$7.00
0-1Hr .....	\$15.00
1-2Hrs .....	\$20.00
2-3Hrs .....	\$25.00
3-4Hrs .....	\$30.00
4-6Hrs .....	\$40.00
6Hrs+ .....	\$45.00

- RATES INCLUDE SALES TAX
- NEW DAYS BEGINS AT 5:00AM
- NO IN & OUT ON THE SAME TICKET

AMERICAN EXPRESS

VISA

mastercard







Worth Avenue Parking  
Apollo PG Corp.

**EACH HOUR  
\$8.00**

**MAX \$40.00**

*Free Hourly  
Parking Stamps  
Available at  
Participating  
Merchants  
Minimum Purchase  
May be Required.*





# ParkMobile Hours & Rates

THE TOWN OF  
PALM BEACH FLORIDA

**PARKING**

PAY WITH YOUR PHONE  
PARKING ZONE #

**4607**



DOWNLOAD PARK MOBILE APP  
[PARKMOBILE.COM](https://www.parkmobile.com)

OR

CALL 877-727-5714



9 AM -  
Midnight

9 AM -  
Midnight



# ParkMobile Hours & Rates

THE TOWN OF  
**P** PARKING  
PALM BEACH FLORIDA

PAY WITH YOUR PHONE  
PARKING ZONE #

**4607**



DOWNLOAD PARK MOBILE APP  
[PARKMOBILE.COM](https://www.parkmobile.com)

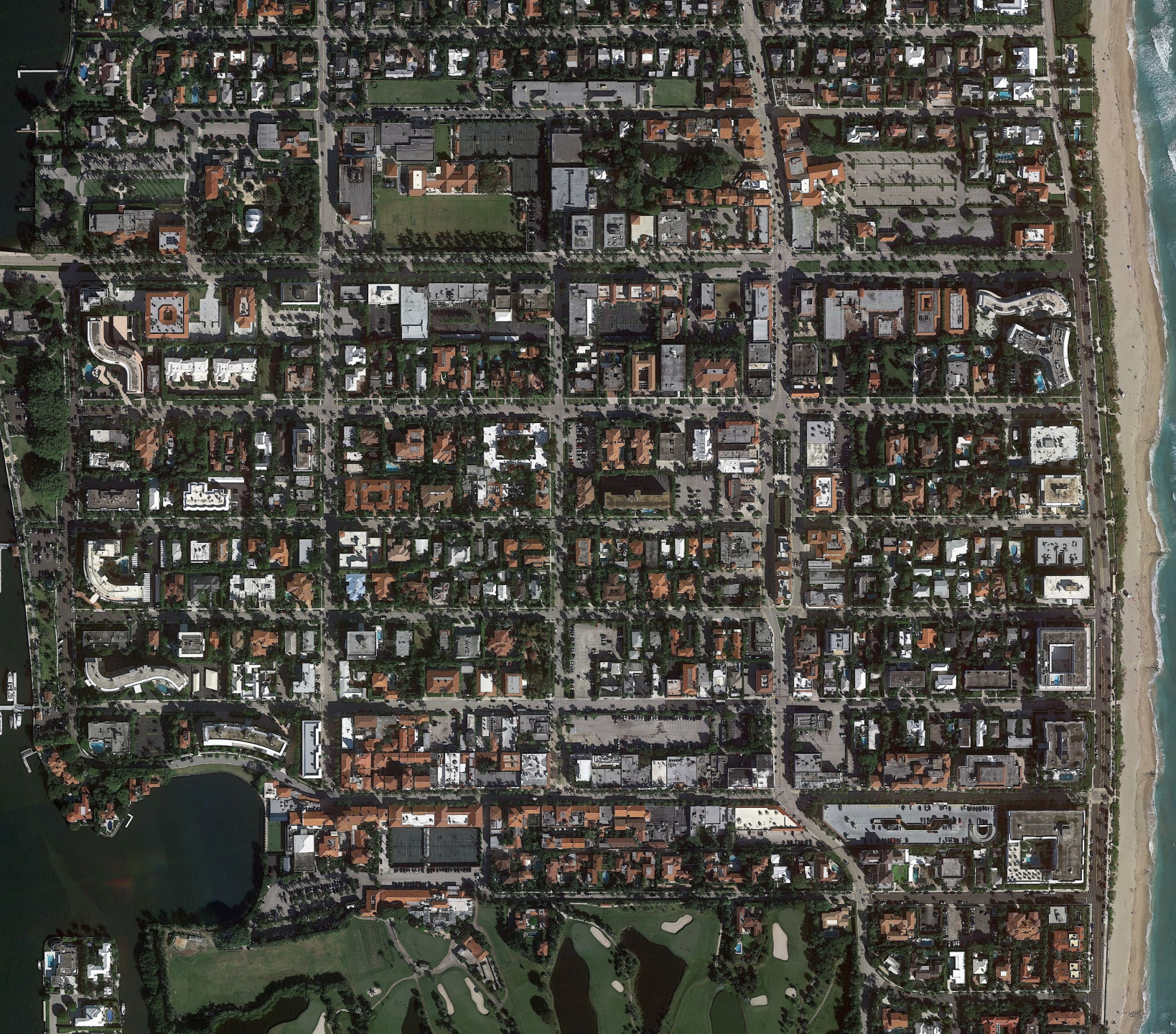
OR

CALL 877-727-5714



9 AM –  
6 PM





**CO-3**

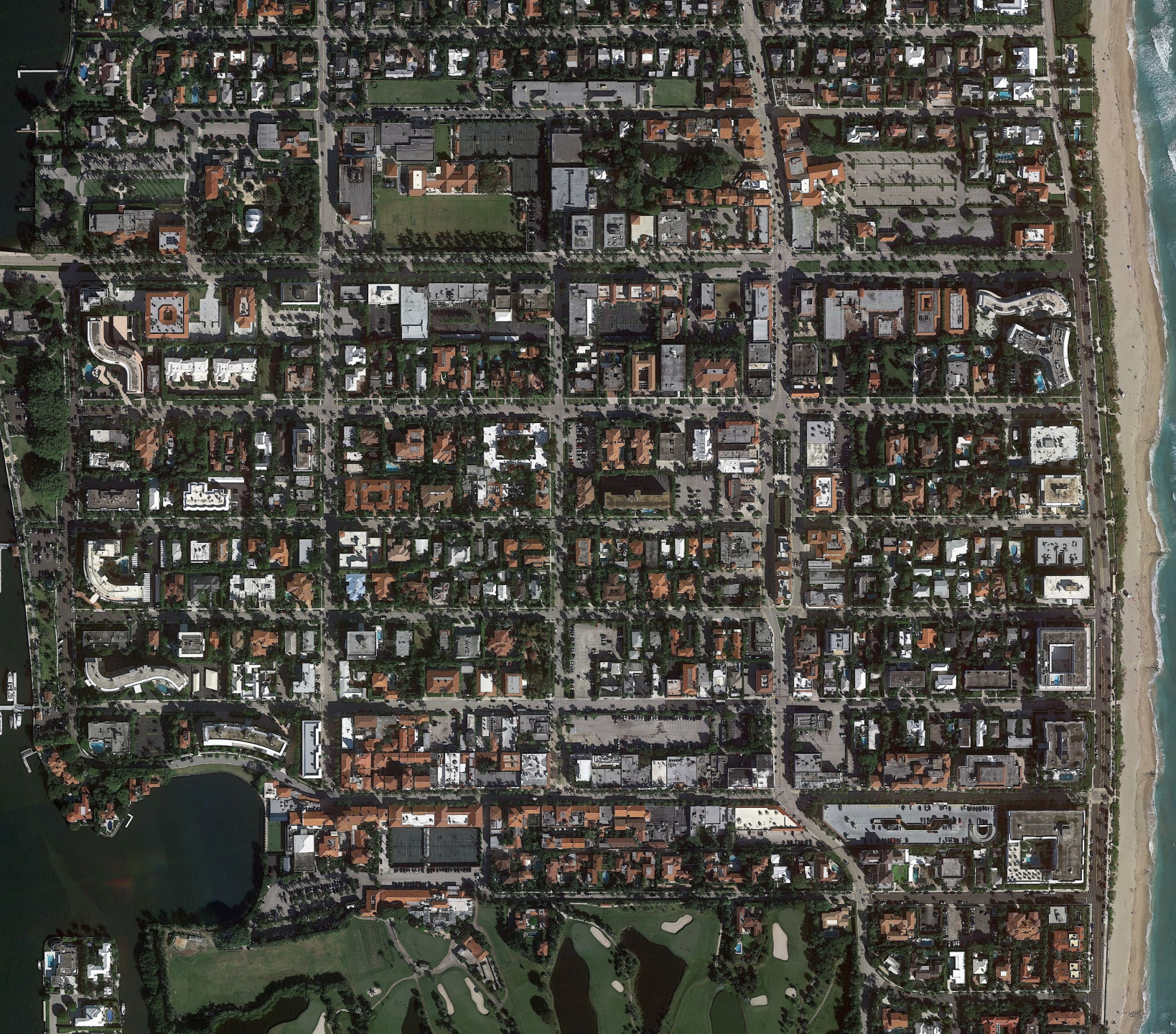


**2370105**

**Exp. 12/31/23**

- Resident Stickers
- 2-hour free parking in ParkMobile spaces
- Became available November 13





# Parking Placard Program

- Available for 1-, 4-, 6-, or 12-month periods
- \$1,454 yearly (\$4 per day)
- Primarily used by businesses & employees
- Potential expansion using ParkMobile data

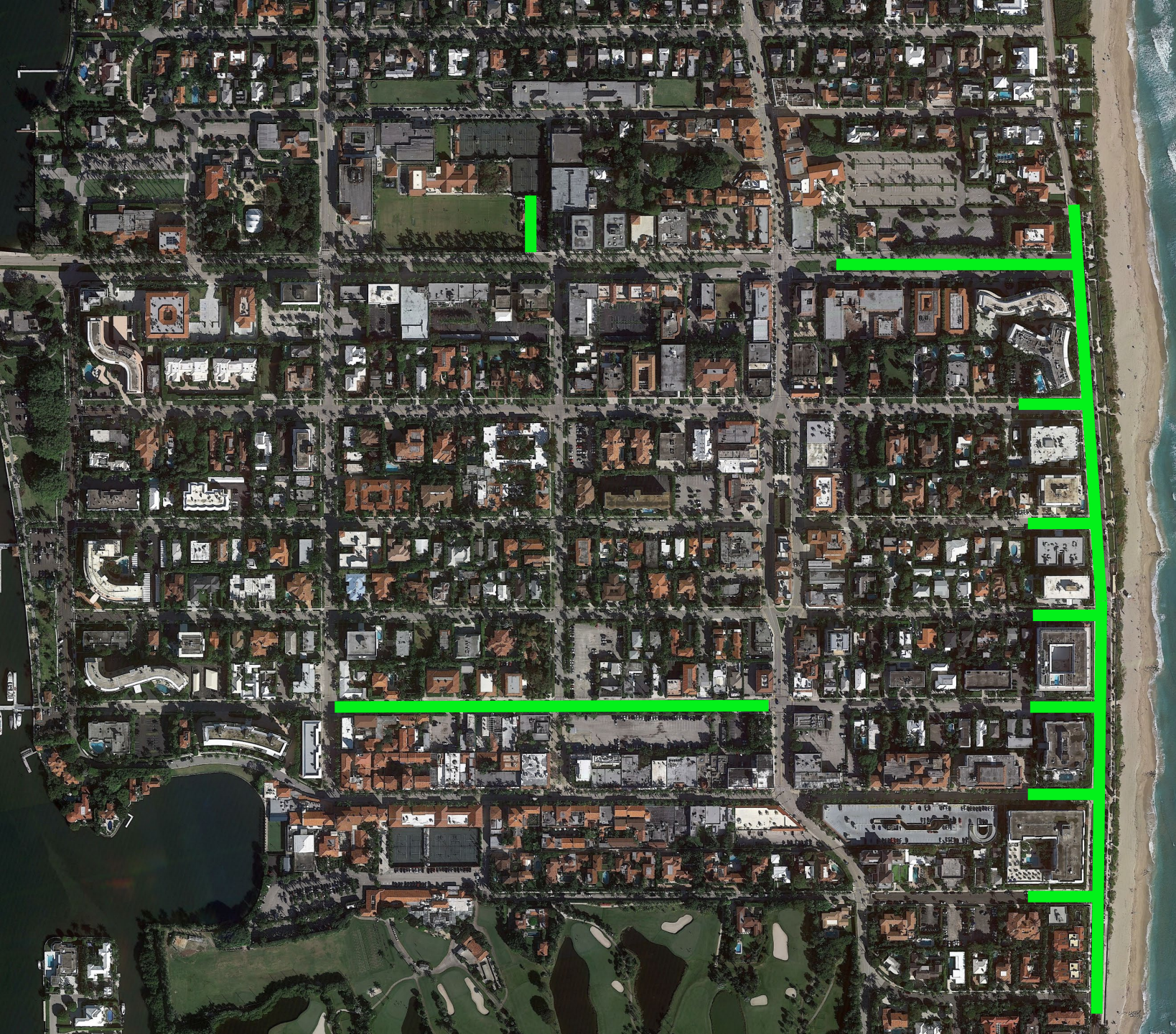


An aerial photograph of a suburban neighborhood. The image shows a grid of streets with houses, trees, and a large green field in the center. The houses are mostly single-story with orange roofs. There are many trees, including palm trees, scattered throughout the neighborhood. A large green field is visible in the center-left area. The overall scene is a typical suburban residential area.

# Teacher Parking

- PB Day Academy
  - 65 Staff members
  - 30 Parking spaces in Wells Fargo lot
- PB Public School;
  - 50-60 Staff
  - 16 On-campus parking spaces
  - 35 Parking spaces in Four Arts lot



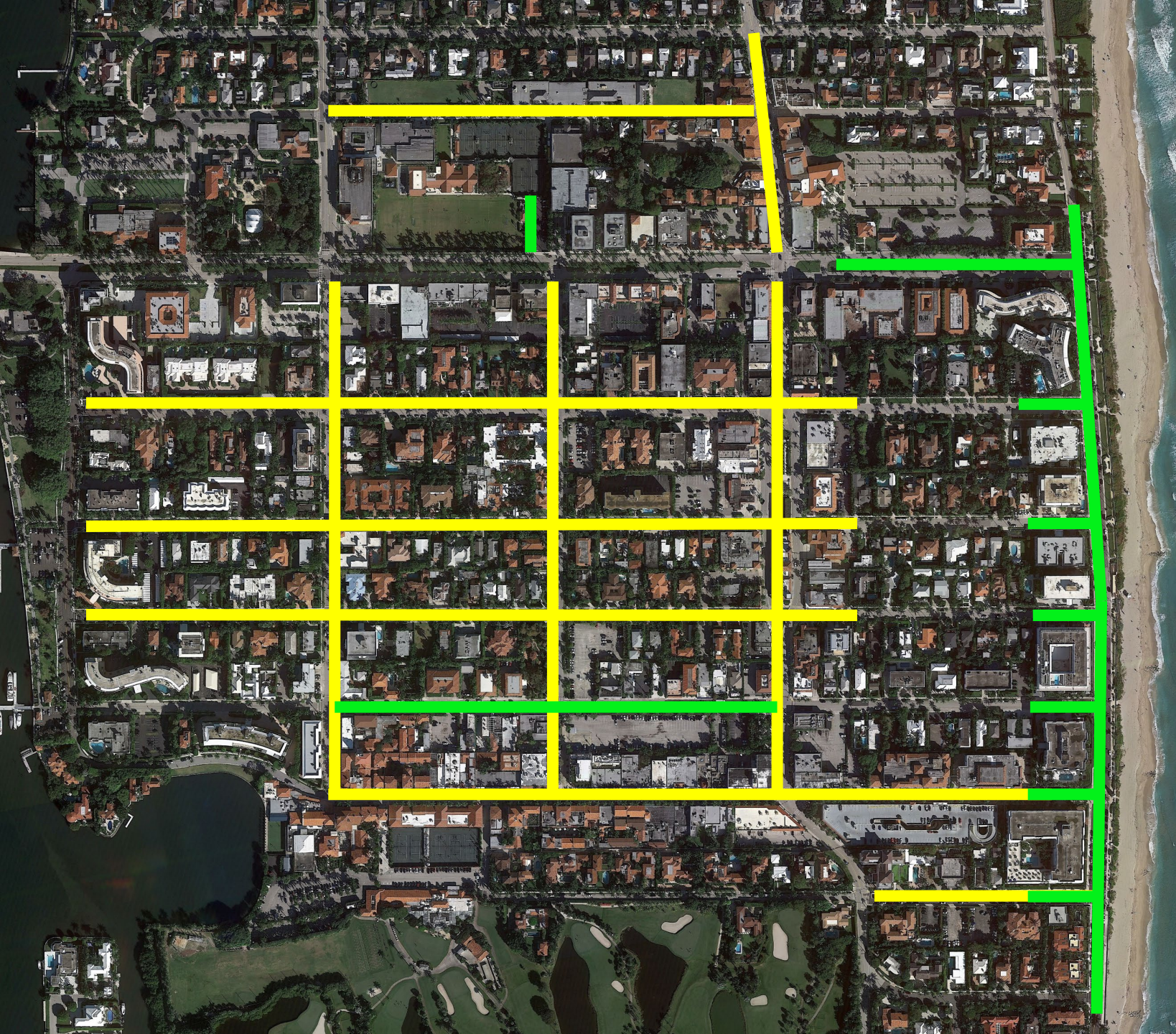


# ParkMobile Implementation

Update existing infrastructure

- New signs
- New zone numbers





# ParkMobile Implementation

- Implement new zones from north to south, working east to west
- Activate each street upon completion
- Begin: May 1, 2024



Questions

