

The background of the slide is a photograph of a tropical street scene. On the left, a multi-story building with balconies is visible. The street is lined with tall palm trees, and several cars are parked along the side. A stone pillar with a lamp on top is visible on the right side of the street. The sky is blue with some clouds. A large, dark blue, arrow-shaped graphic points from the left towards the right, partially obscuring the text and the background image.

Town of Palm Beach Comprehensive Parking Plan

A plan to reduce traffic, increase parking availability, and implement a data-driven approach to parking management



Parking Goals:

- Availability and Accessibility
- Safety and Security
- Uniformity and consistency
- Best use of inventory
- Data-driven decision making

An aerial photograph of a coastal city grid. The left side shows a dense residential area with many houses and streets. A golf course is visible in the bottom left corner. The right side of the image shows a sandy beach and the ocean with waves breaking. The text 'Topics:' is overlaid on the right side of the image.

Topics:

- Resident Parking Decal
- Expansion of ParkMobile
- Free 30-Minute Parking
- Parking Enforcement
- Road Signs

An aerial photograph of a coastal town, showing a grid of streets, houses, and a beach area on the right side. A red rectangular box with a white border is positioned in the upper left quadrant of the image.

Parking Permit

- Available to all residents
- Decal cost: \$50 (each)
- Two per residence
- Annual renewal
- Time limits apply
- Not for use in RPP spaces

New Resident Decal Program



Parking
Permit

Parking
Permit

- Four permits (max)
 - Hang tags
 - Decals
- Decal option covers permit and paid spots
- Decal cost: \$100 (each)
- Two decals (max)

Resident Parking Permits (RPP)



Expansion of ParkMobile

Worth Avenue

- ParkMobile (Paid)
- Resident Permit
- 30-minute (Free)
- Loading / Valet





ParkMobile (Paid)



Resident Permit

(No Change)





30-minute (Free)

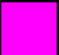







Loading / Valet



Marina District

-  ParkMobile (Paid)
-  Resident Permit
-  Marina Permit
-  Loading / Valet

ParkMobile
(Paid)



Resident & Marina Permit

PARKING
BY
PERMIT
ONLY

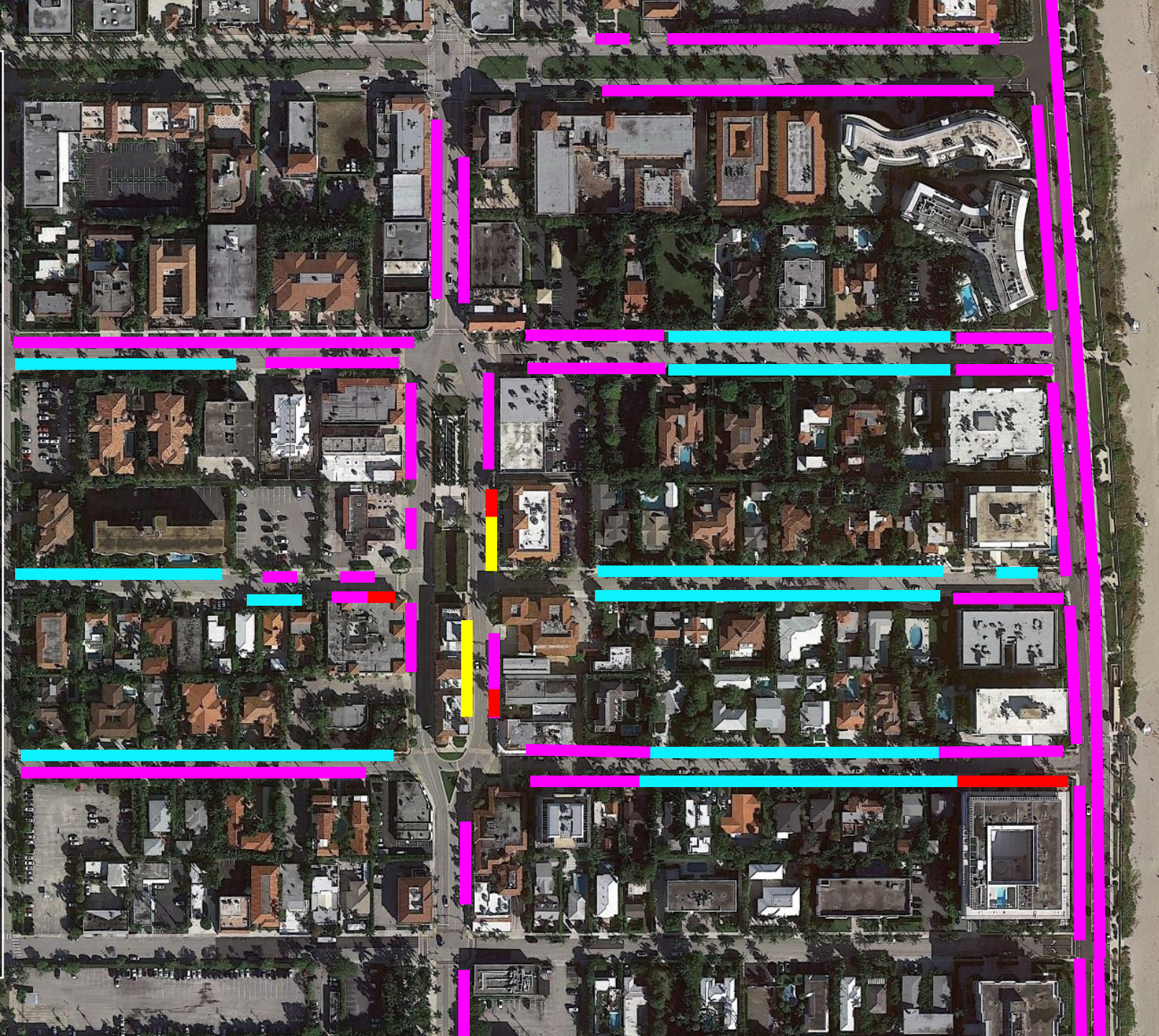


Loading Zones

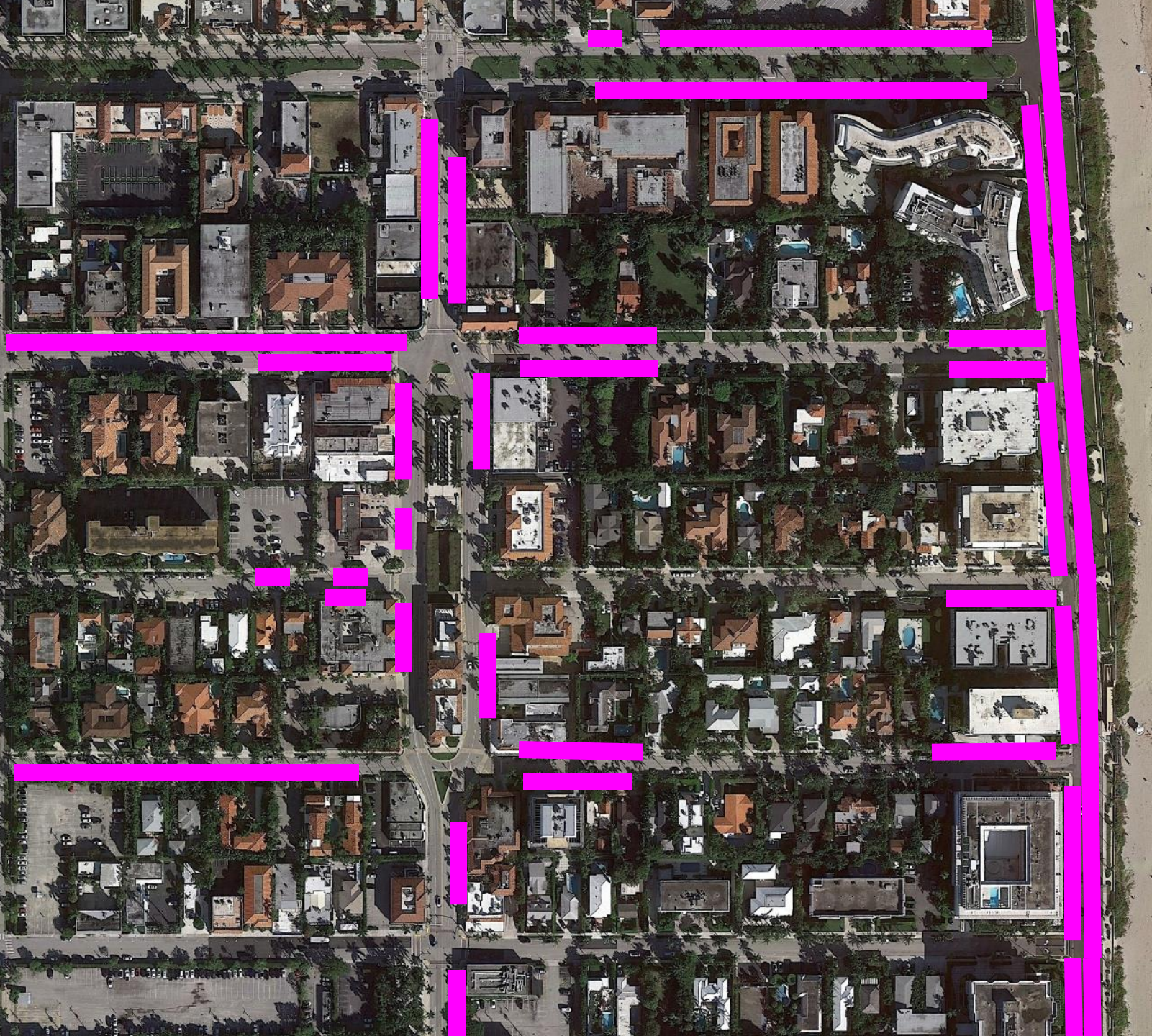


South County Business District

- ParkMobile (Paid)
- Resident Permit
- 30-Minute (Free)
- Loading / Valet

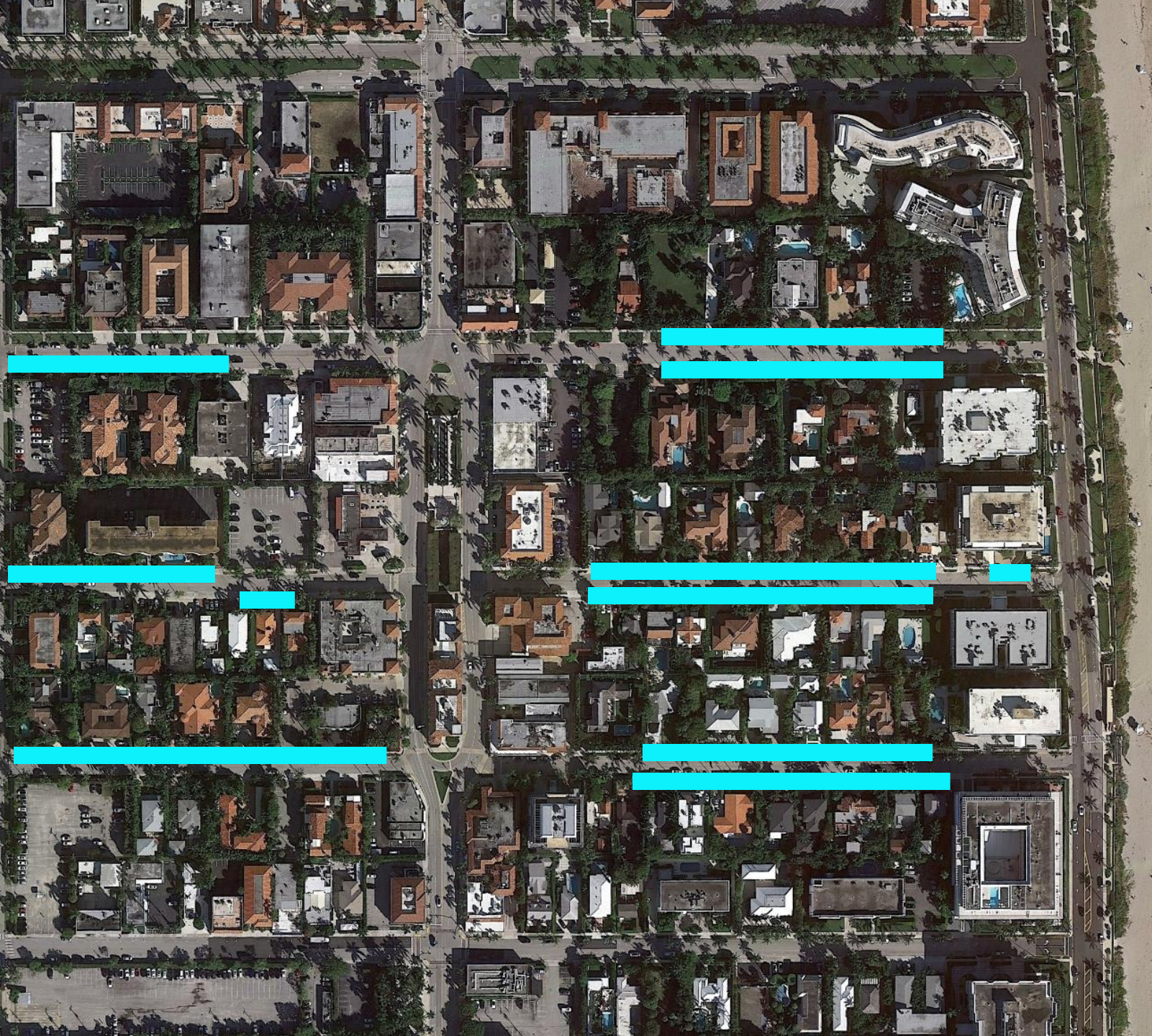


ParkMobile (Paid)

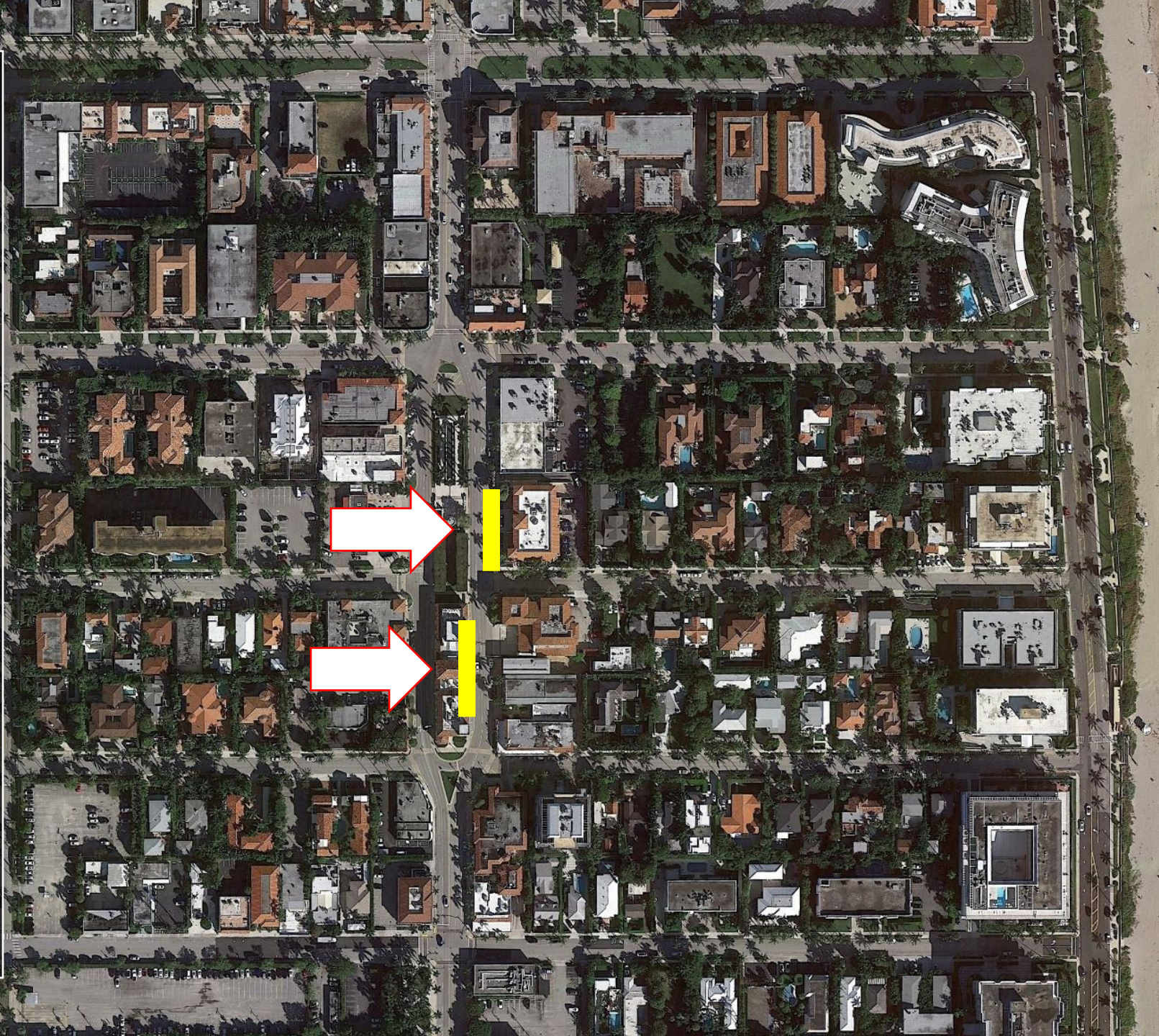


Resident Permit

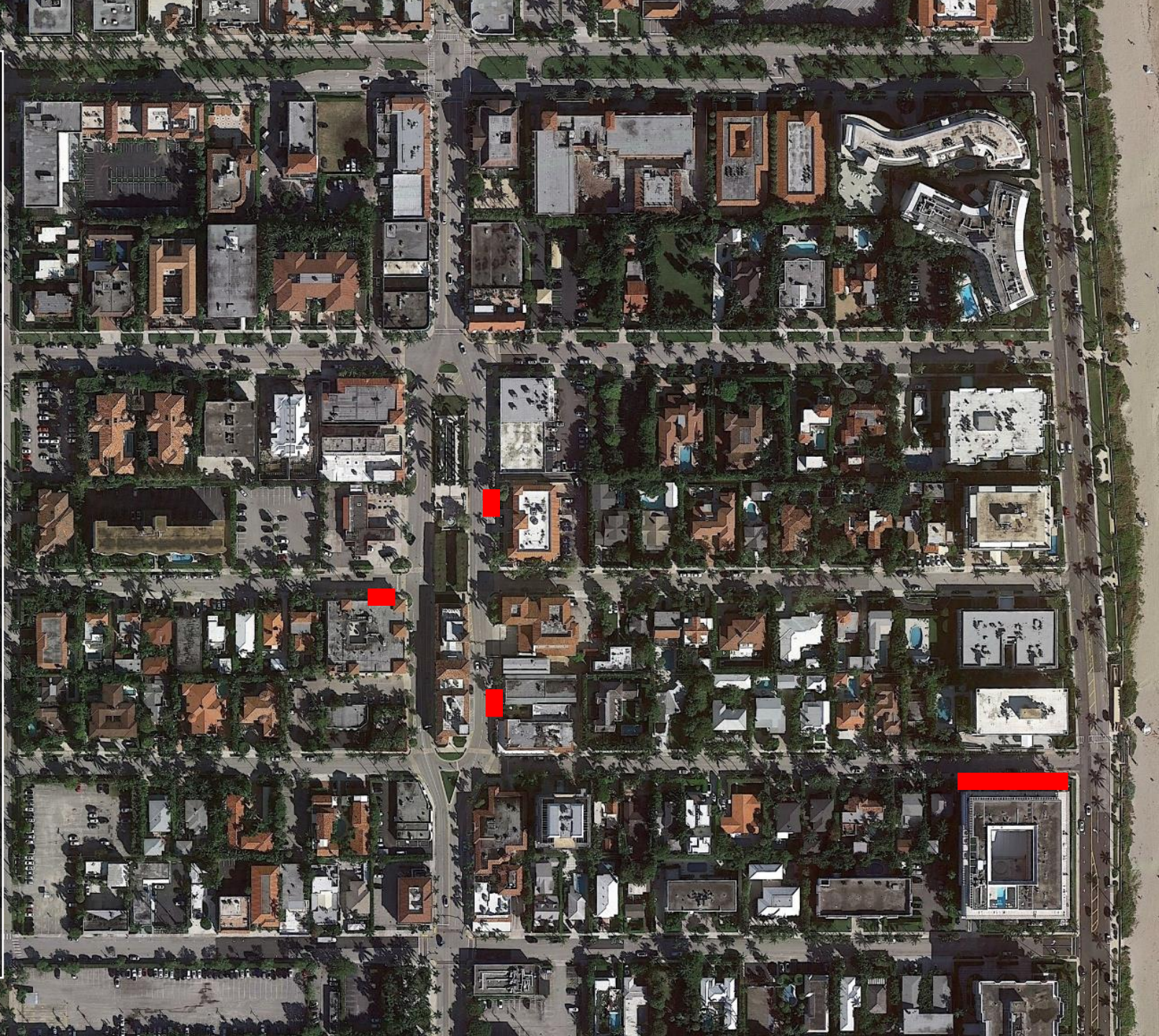
PARKING
BY
PERMIT
ONLY



30-minute
(Free)





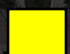
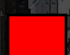
Loading / Valet





An aerial photograph of a residential area in South County, featuring a grid of streets, houses, and green spaces. Overlaid on the map are various colored lines representing different parking regulations. A legend in the bottom right corner explains these colors: magenta for ParkMobile (Paid), cyan for Resident Permit, yellow for 30-Minute (Free), and red for Loading / Valet. The map shows these zones distributed across several streets, with some areas having multiple overlapping permits. A large white box with a black border contains the title text.

South County & Seaview Ave

-  ParkMobile (Paid)
-  Resident Permit
-  30-Minute (Free)
-  Loading / Valet



ParkMobile (Paid)



PARKING
BY
PERMIT
ONLY



Resident Permit



30-minute (Free)



Loading / Valet

An aerial photograph of a residential neighborhood with a green circular overlay in the center. The overlay contains the text "\$5 hour".

\$5 hour

An aerial photograph of a residential neighborhood with a yellow circular overlay in the center. The overlay contains the text "\$7 hour".

\$7 hour

An aerial photograph of a coastline with a dark blue rectangular overlay in the center. The overlay contains the text "ParkMobile Rates".


ParkMobile Rates



**8 AM -
Midnight**



**8 AM -
Midnight**



8 AM - 6 PM



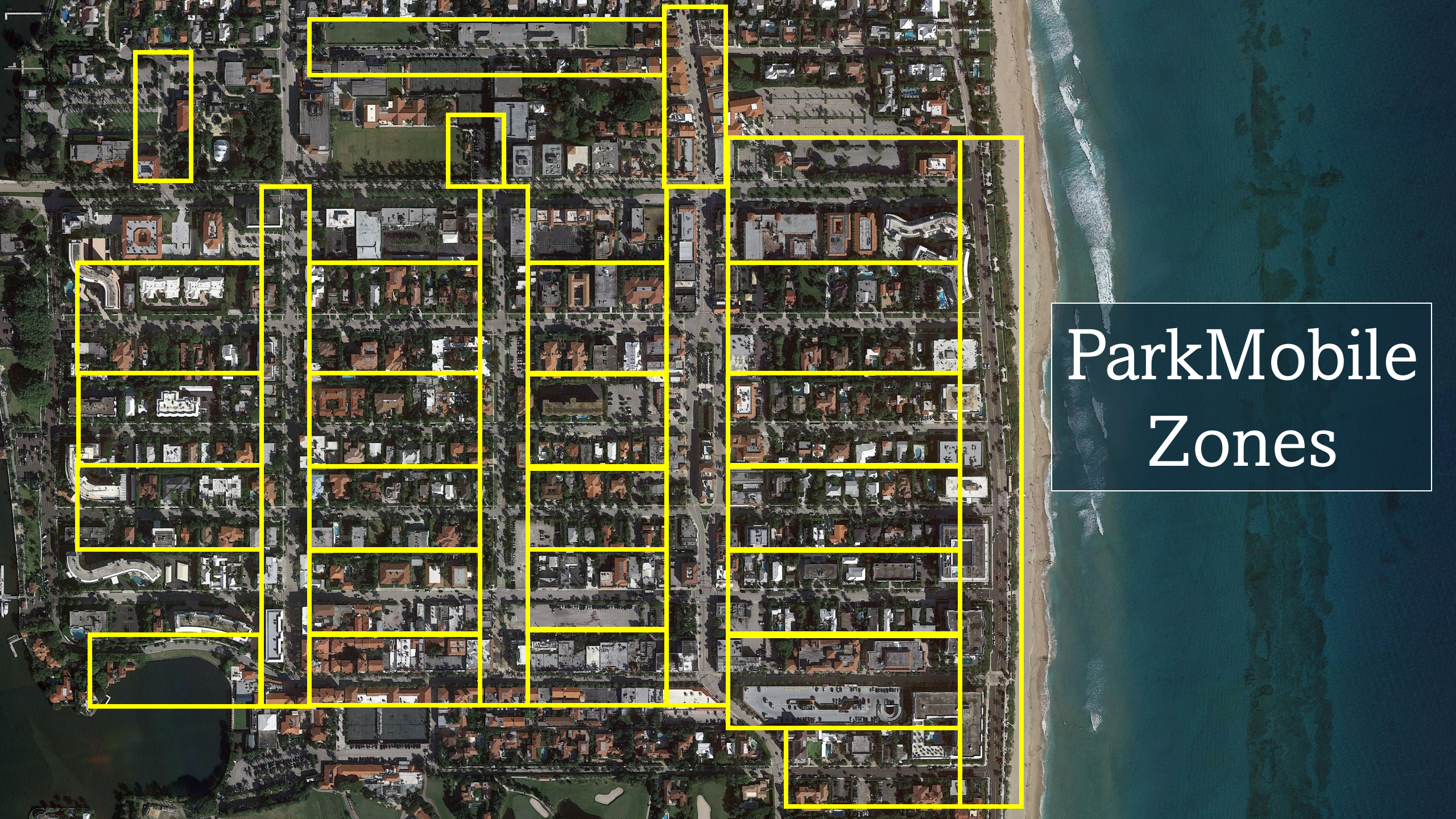
**ParkMobile
Hours**

An aerial photograph of a coastal city, likely San Diego, showing a grid of streets, residential buildings, and green spaces. A blue rectangular area is highlighted in the center of the image, indicating a specific zone. The ocean is visible on the right side, with waves breaking onto a sandy beach.

Time Limited Parking

An aerial photograph of a coastal city, likely San Diego, showing a grid of streets, residential buildings, and green spaces. A blue rectangular area is highlighted in the center of the image, indicating a specific zone. The ocean is visible on the right side, with waves breaking onto a sandy beach.

2 Hours



ParkMobile Zones

Parking Enforcement



Wayfinding Signs



Summary

- Uniform policies and consistent signage
- Policies that are tailor fit to meet the needs of the community
- Data-driven decision making
- Best use of parking inventory
- Increased space turnover

Questions

