

PRESENTATION for LANDMARK COMMISSION
8/16/2023

Hello,

Thank you for reviewing our application for new Hurricane windows to replace the ones from 1952 at 210 Debra Lane. Here are the current ones. Regarding the windows for the front (north), the east facing corner window and the south facing corner window, all these windows were originally the old style 3 high awnings windows. Each window has 3 sashes in one frame, creating a 1 wide by 3 high light division/muntin pattern. This style of awning window is not available as an impact rated window.

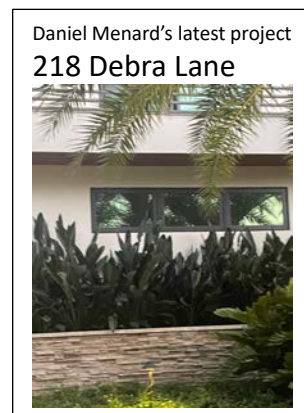
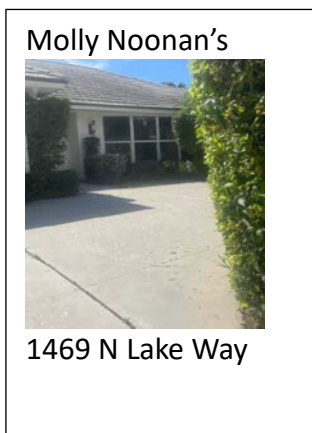


We are being pro-active to keep both the house in its original form and preserve the historical look. Being that the original windows were approximately 50" wide and a single sash operable casement window is not available 50" wide, our only solution to fill these openings with a single window, and come close to the original look, is with a double hung window, which is 2 lights/sashes tall.

[illegible]

It is our hope that the Board sees the value and pertinence of replacing the old with the new, chosen hurricane windows. This is a straightforward petition and doesn't have pros and cons but rather the best viable option. No need to underscore we all need to protect ourselves the best we can against the hurricanes and add that the insurance companies are supporting residence compliance.

We also have included three neighbor's hurricane windows and we are keeping in the spirit of the neighborhood. They have also taken preventive measures to protect themselves from the ever-looming dreaded hurricane threat for our barrier island.



We look forward to a positive conclusion in support of this and permission granted in a timely fashion. (Before the season is among us full force.)

Respectfully yours,

Taylor Barton- Smith
Eli Kessel